



<http://www.canon.com/c-park/en/>



View of completed model

Ivy Christmas wreath (classic style)

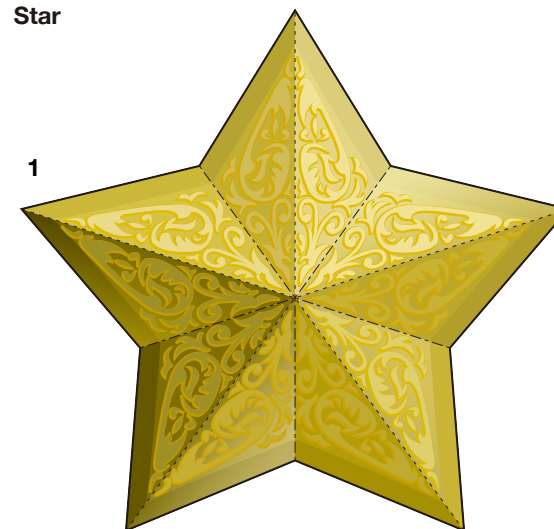
Wreaths are used at Christmas time to decorate places like entrances to homes. Various theories offer explanations of wreath's origins: in terms of religious significance, the holly leaves may symbolize Christ's sufferings on the cross and the red berries the blood of Christ. Another theory is that evergreens were used to protect against evil due to their strong sterilizing and antibacterial effects, while the berries and ears of barley served as talismans promoting abundant harvests, making the original wreath something of a good-luck charm. Today, the wreath generally serves a merely decorative purpose. This ivy wreath features a stylish design with an ivy motif.

■ Parts list (pattern): Twenty one A4 sheets

■ No. of Parts: 127

*Build the model by carefully reading the Assembly Instructions, in the parts sheet page order.

Star



Ivy Christmas wreath (classic style): Pattern

© Canon Inc. © PAOPAO Inc.



Main body - 3



Ivy Christmas wreath (classic style): Pattern

© Canon Inc. © PAOPAO Inc.



Main body - 3



Ivy Christmas wreath (classic style): Pattern

© Canon Inc. © PAOPAO Inc.



Main body - 3

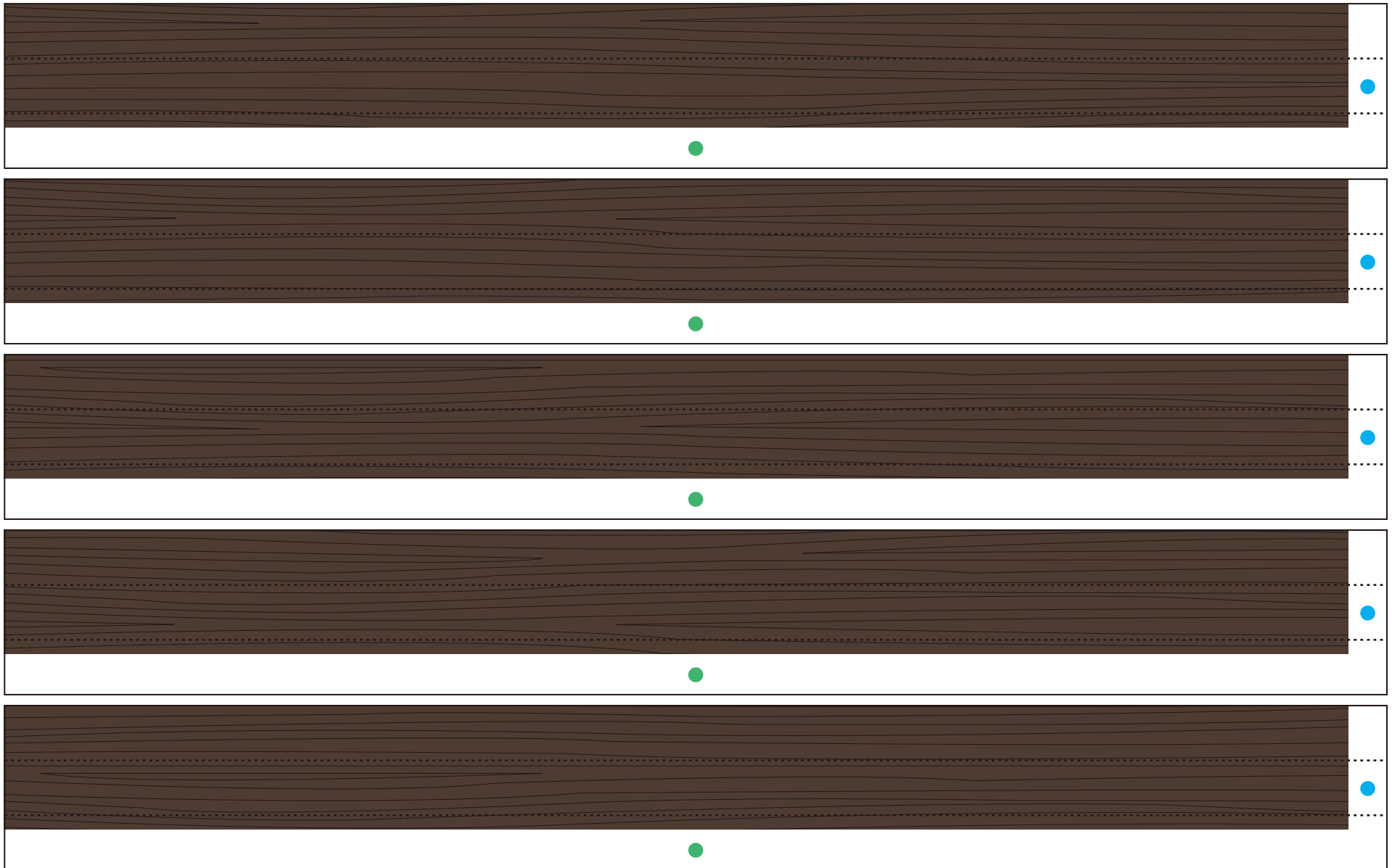


Ivy Christmas wreath (classic style): Pattern

© Canon Inc. © PAOPAO Inc.



Main body - 3



Ivy Christmas wreath (classic style): Pattern

© Canon Inc. © PAOPAO Inc.



Main body - 3

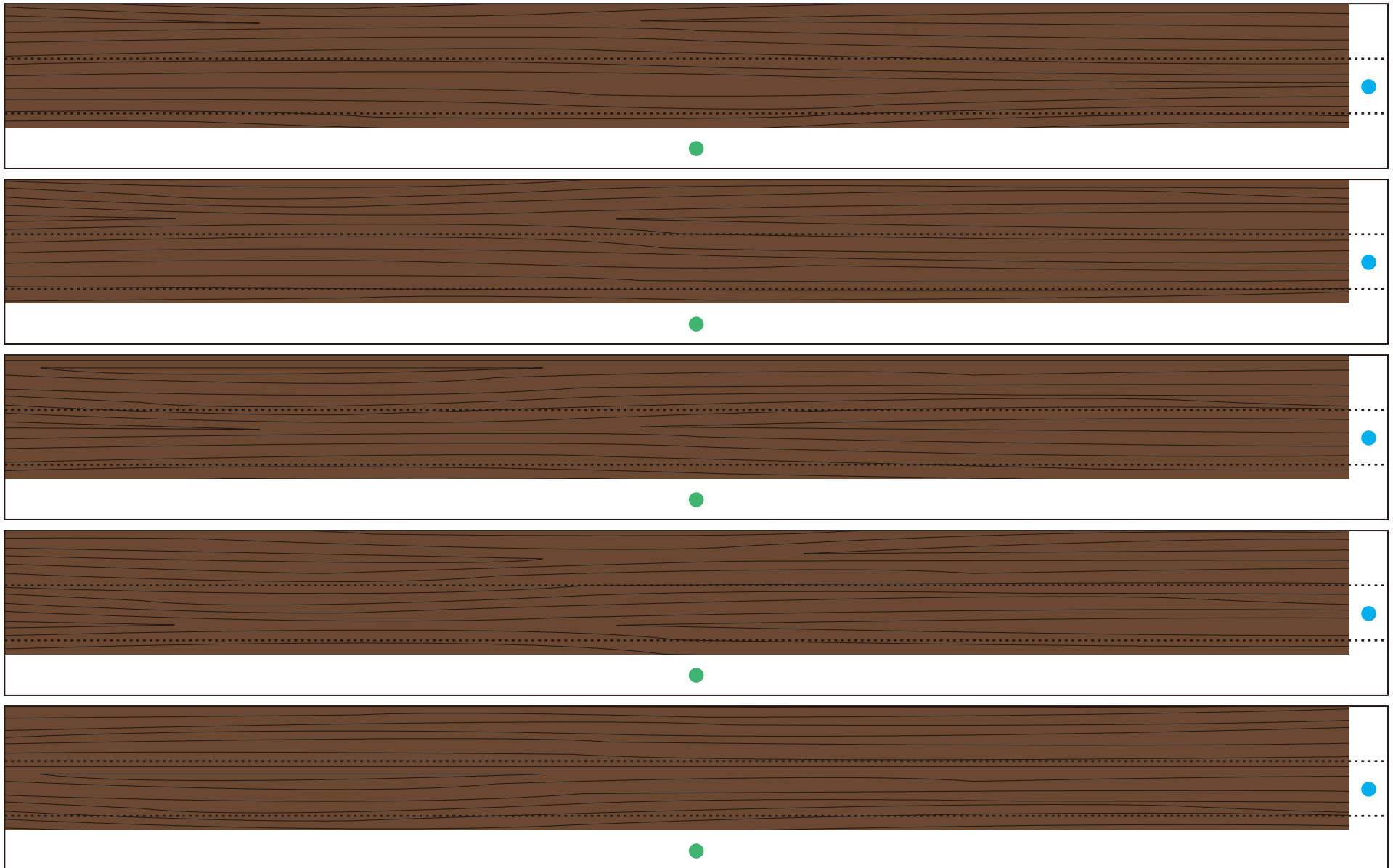


Ivy Christmas wreath (classic style): Pattern

© Canon Inc. © PAOPAO Inc.



Main body - 4

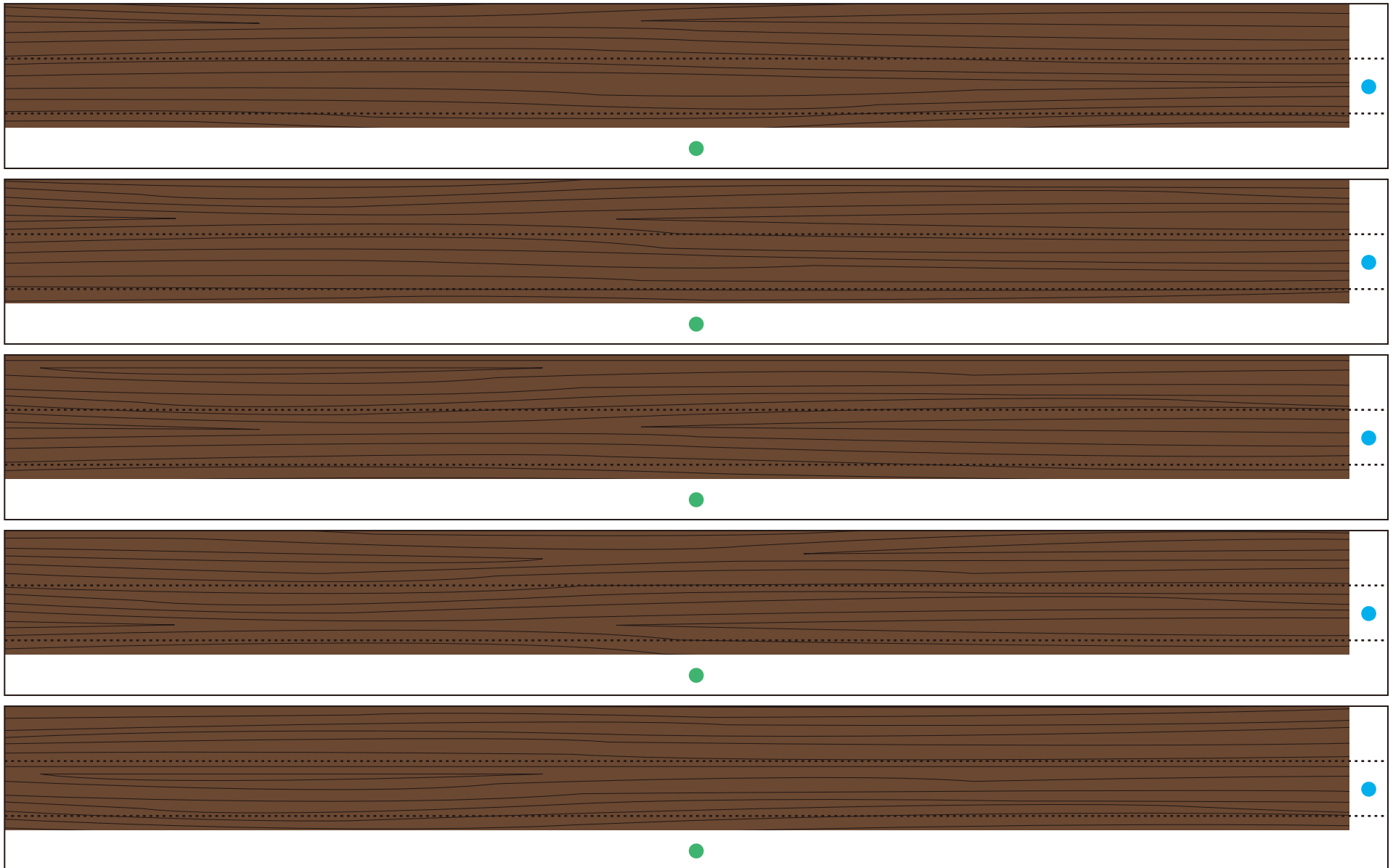


Ivy Christmas wreath (classic style): Pattern

© Canon Inc. © PAOPAO Inc.



Main body - 4

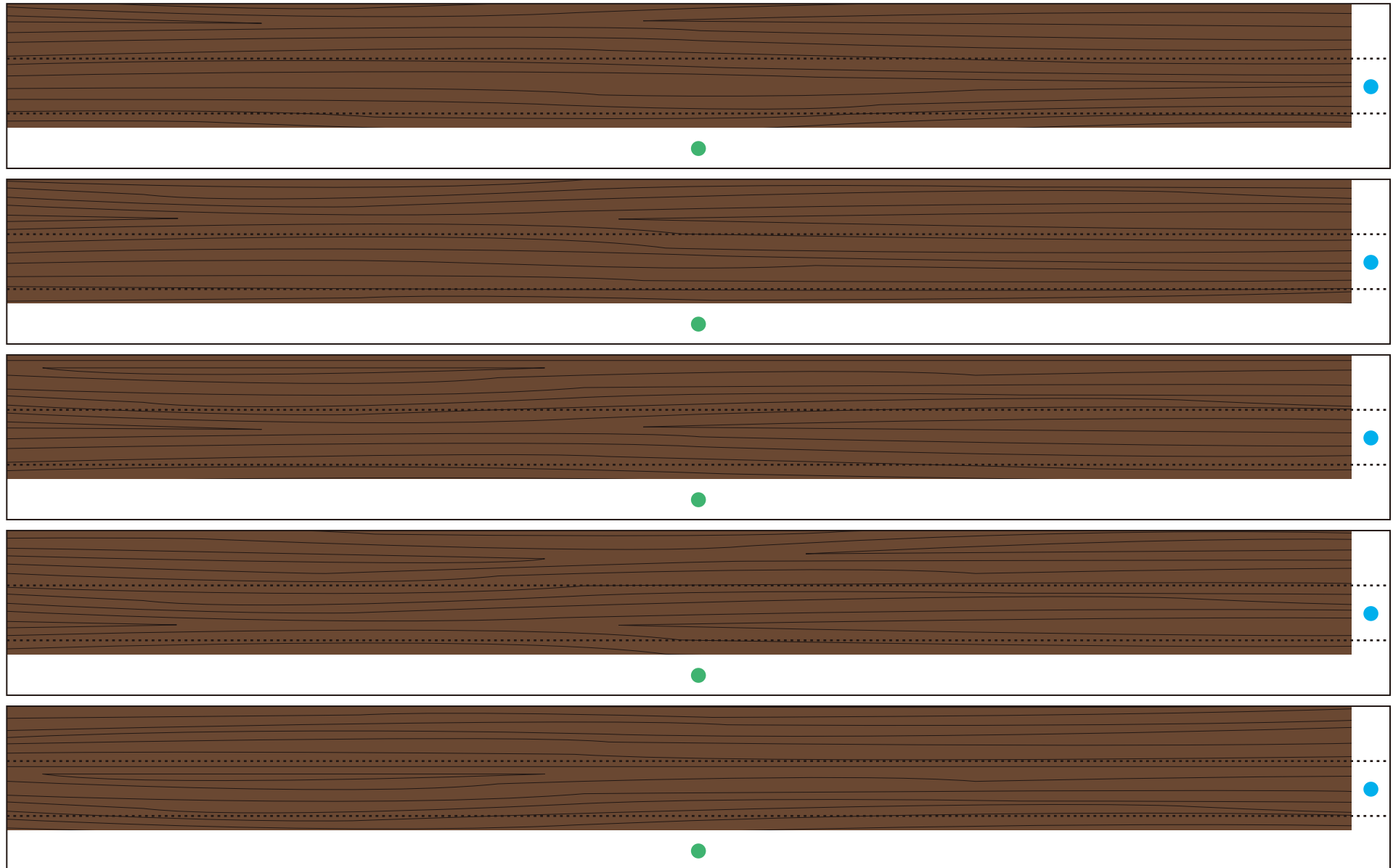


Ivy Christmas wreath (classic style): Pattern

© Canon Inc. © PAOPAO Inc.



Main body - 4

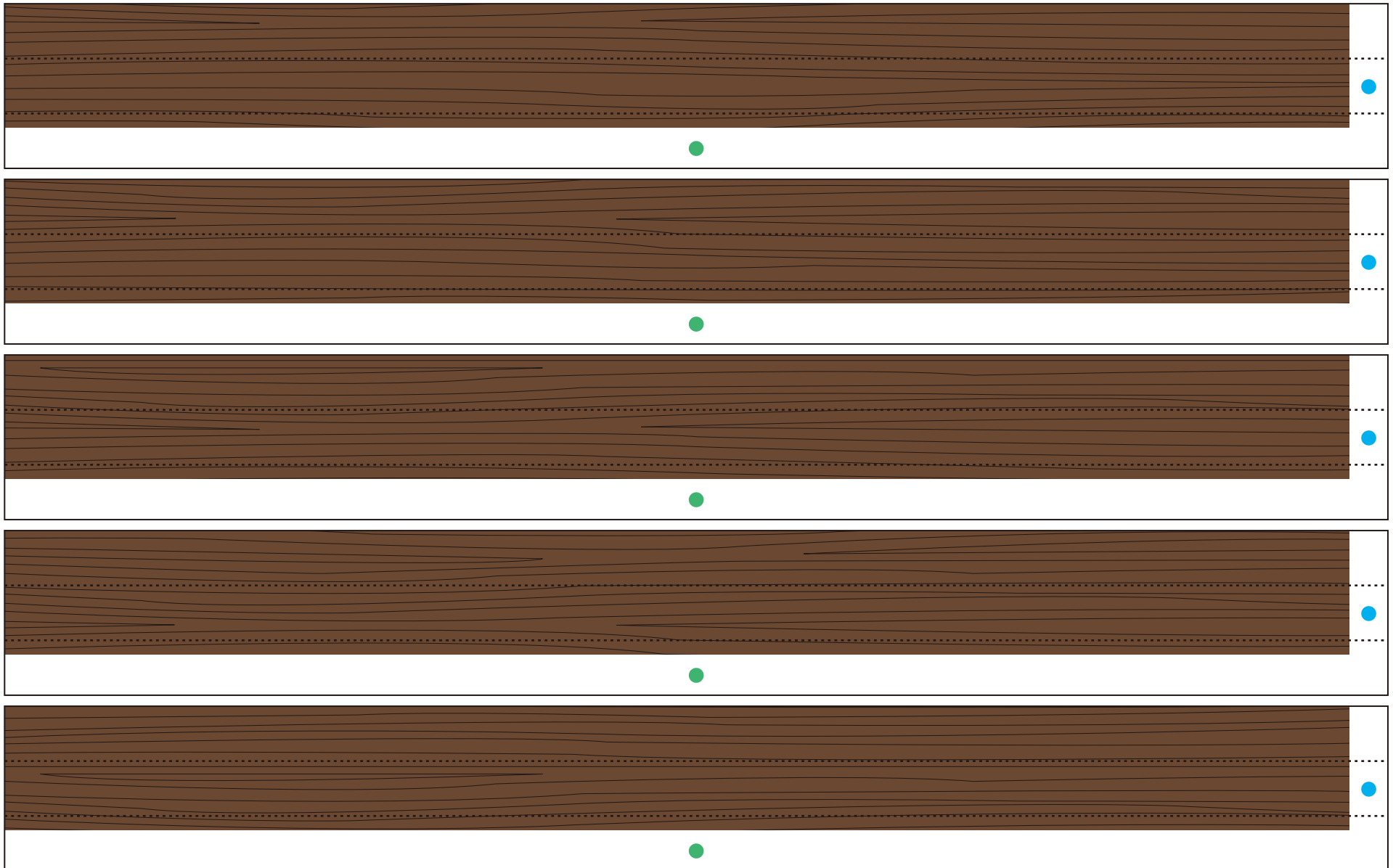


Ivy Christmas wreath (classic style): Pattern

© Canon Inc. © PAOPAO Inc.



Main body - 4



Ivy Christmas wreath (classic style): Pattern

© Canon Inc. © PAOPAO Inc.



Main body - 4

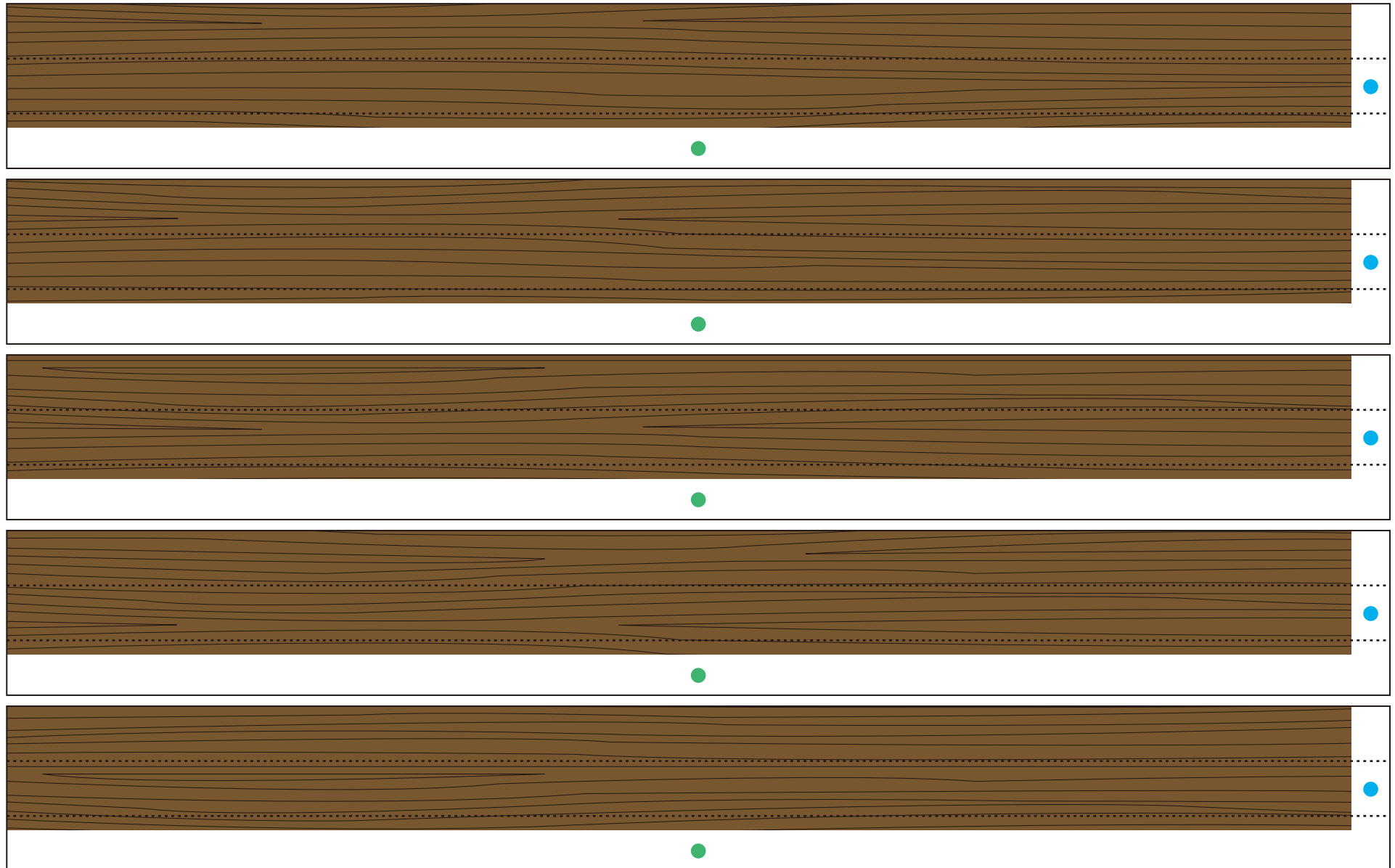


Ivy Christmas wreath (classic style): Pattern

© Canon Inc. © PAOPAO Inc.

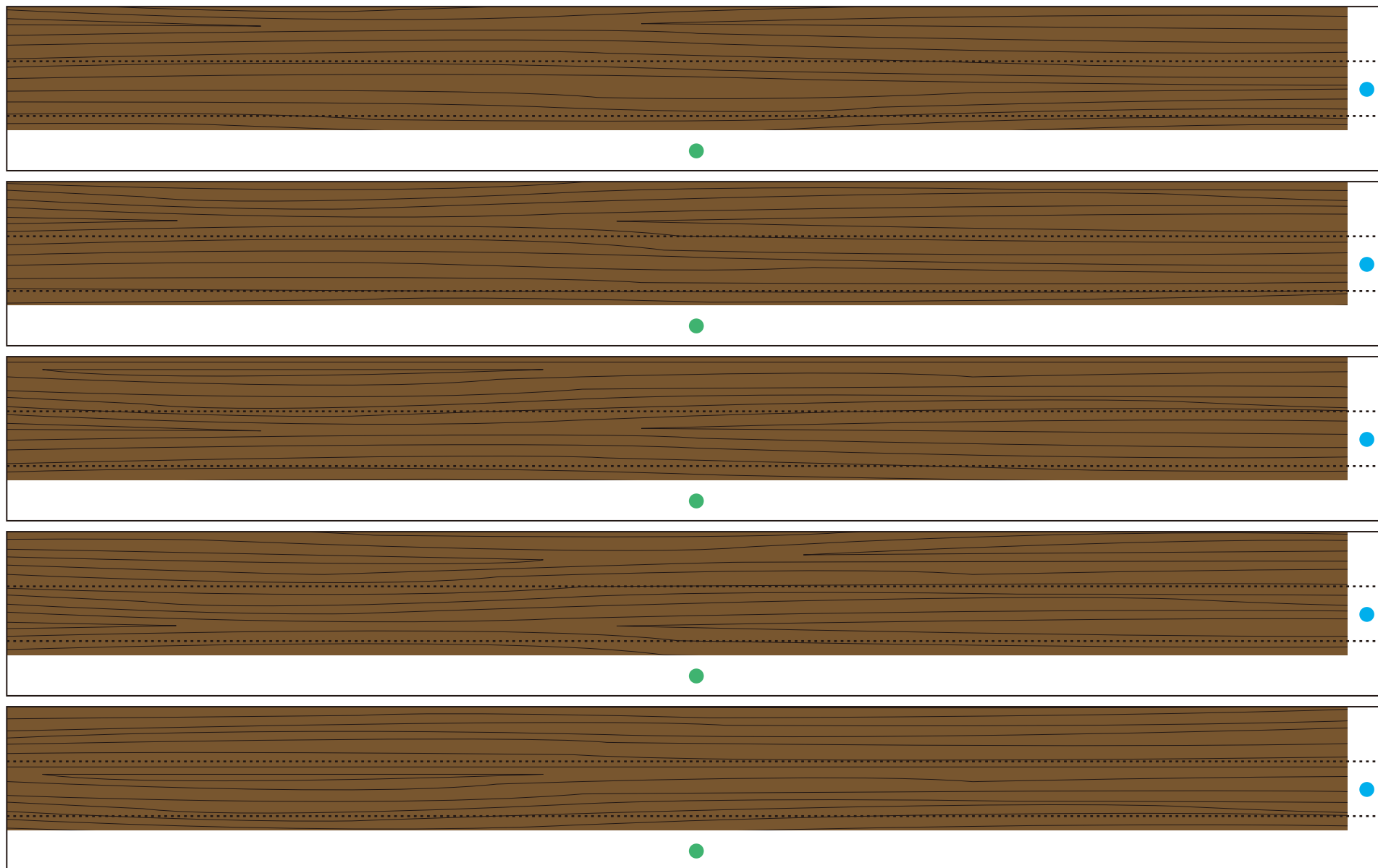


Main body - 5



Ivy Christmas wreath (classic style): Pattern

Main body - 5

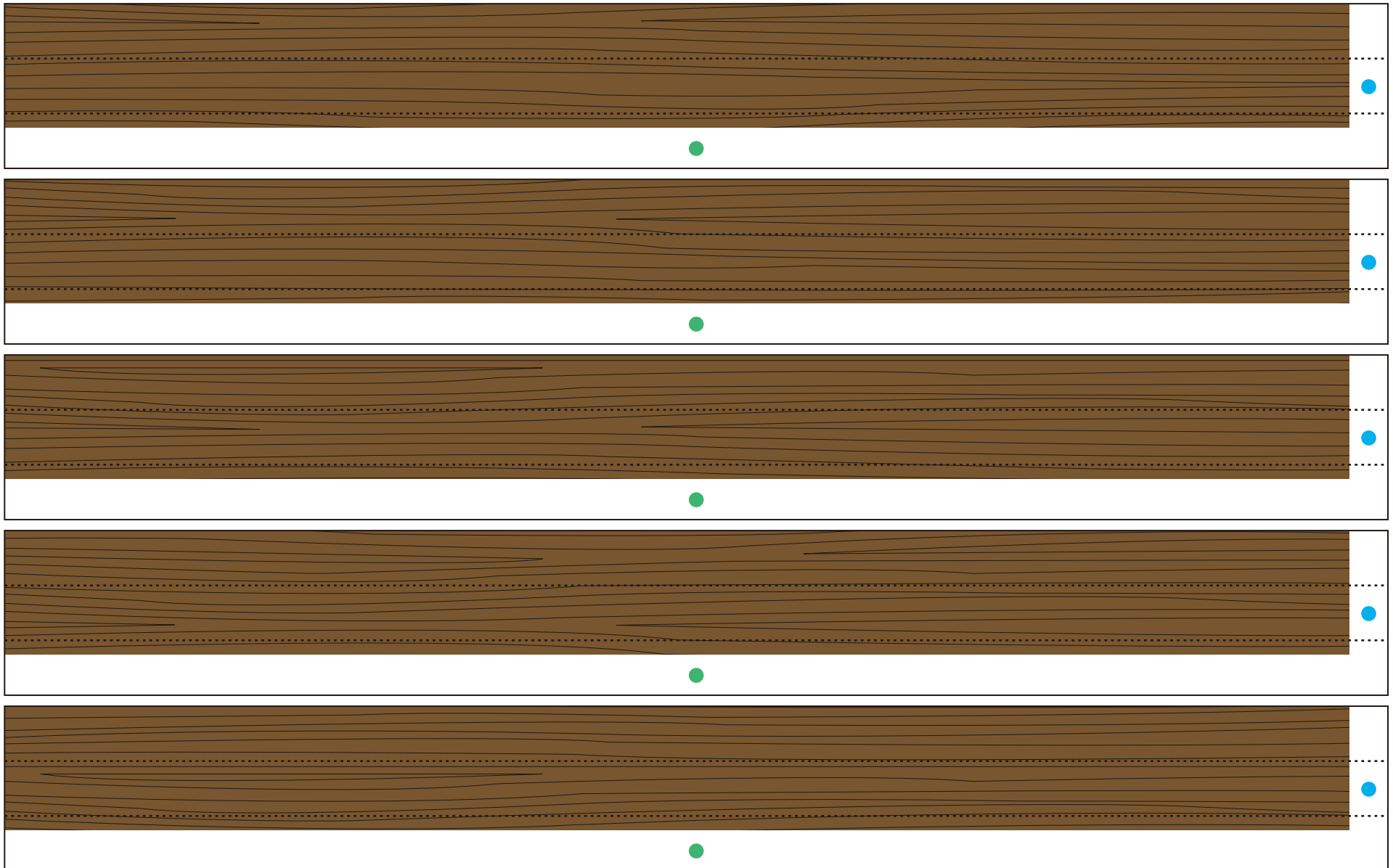


Ivy Christmas wreath (classic style): Pattern

© Canon Inc. © PAOPAO Inc.



Main body - 5

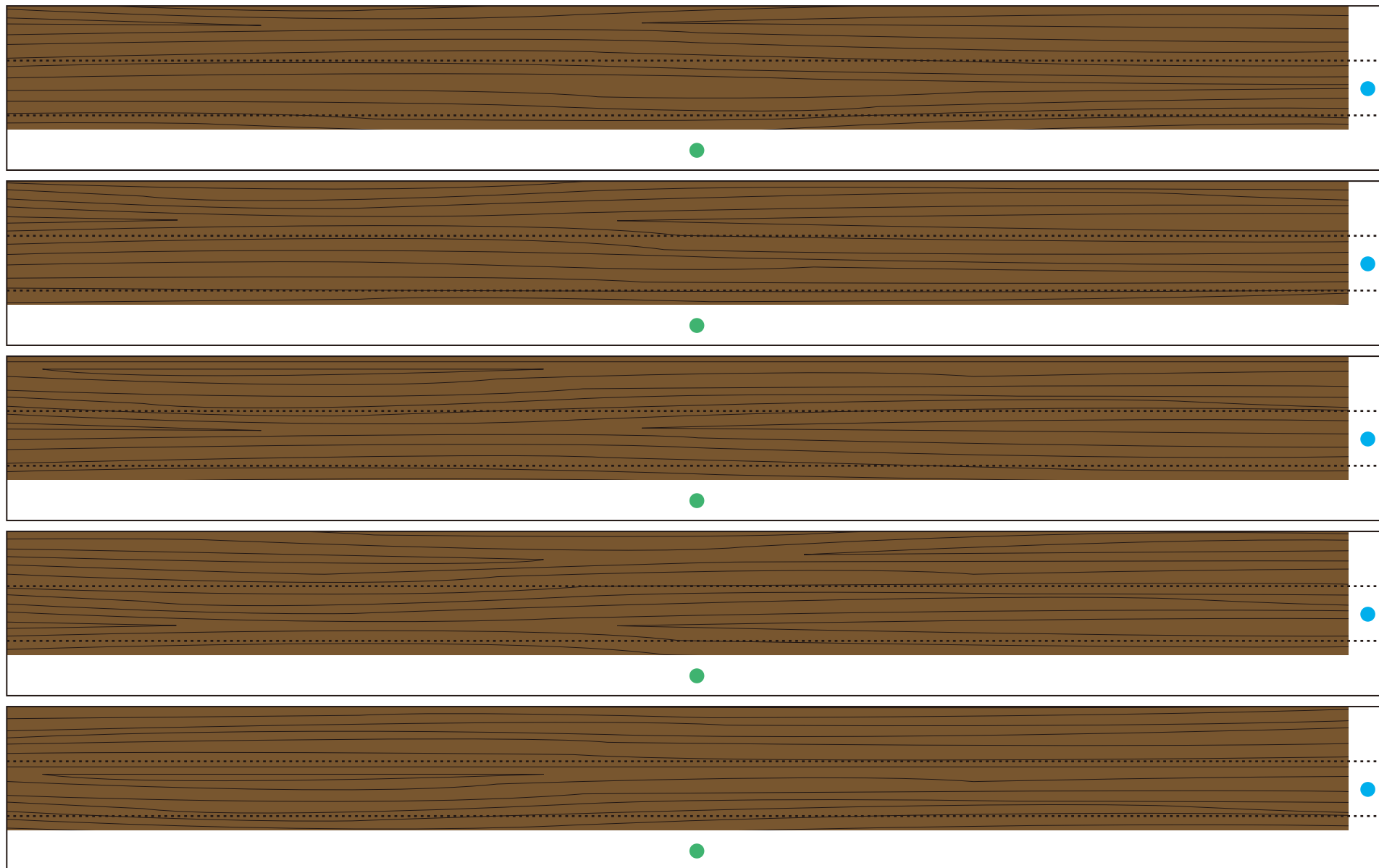


Ivy Christmas wreath (classic style): Pattern

© Canon Inc. © PAOPAO Inc.



Main body - 5



Ivy Christmas wreath (classic style): Pattern

© Canon Inc. © PAOPAO Inc.



Main body - 6

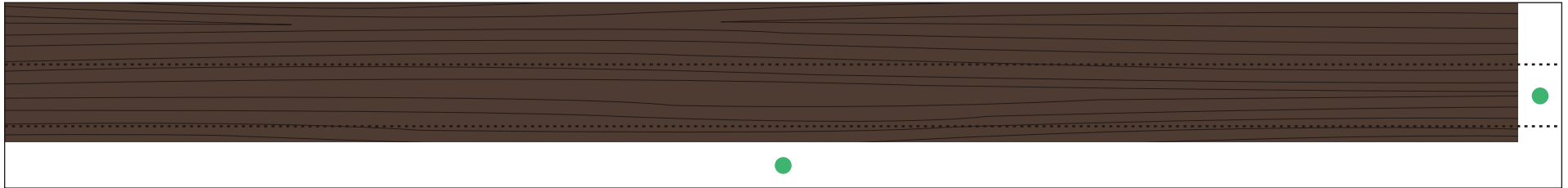


Ivy Christmas wreath (classic style): Pattern

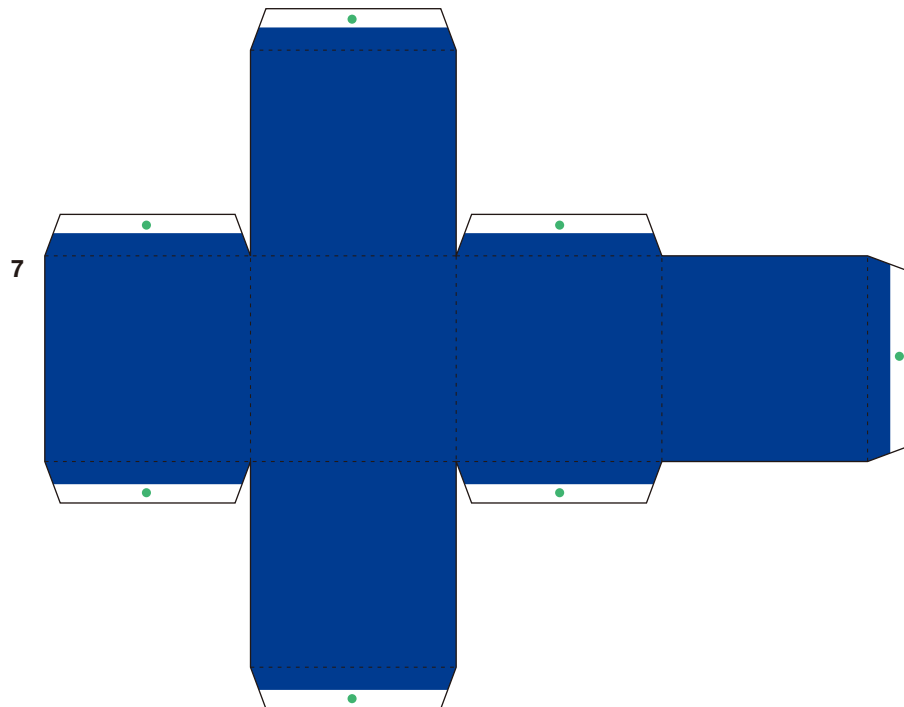
© Canon Inc. © PAOPAO Inc.



Main body - 6



Present

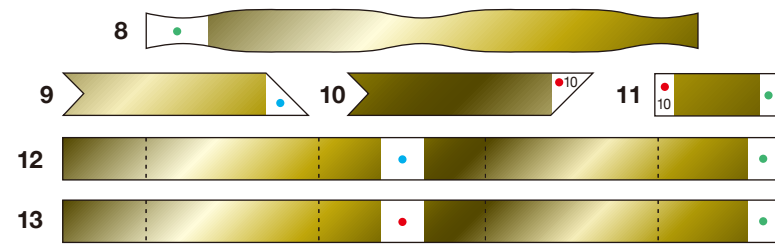
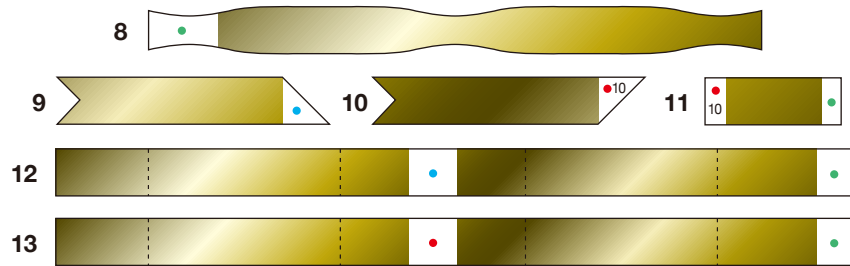
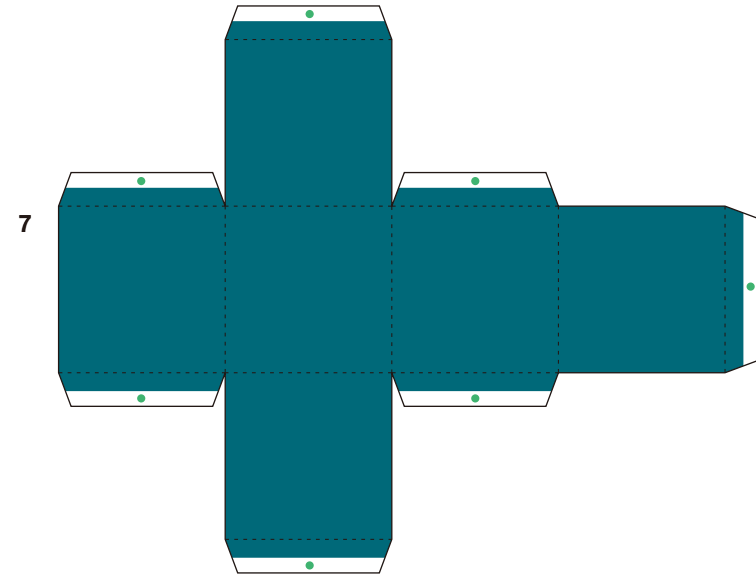
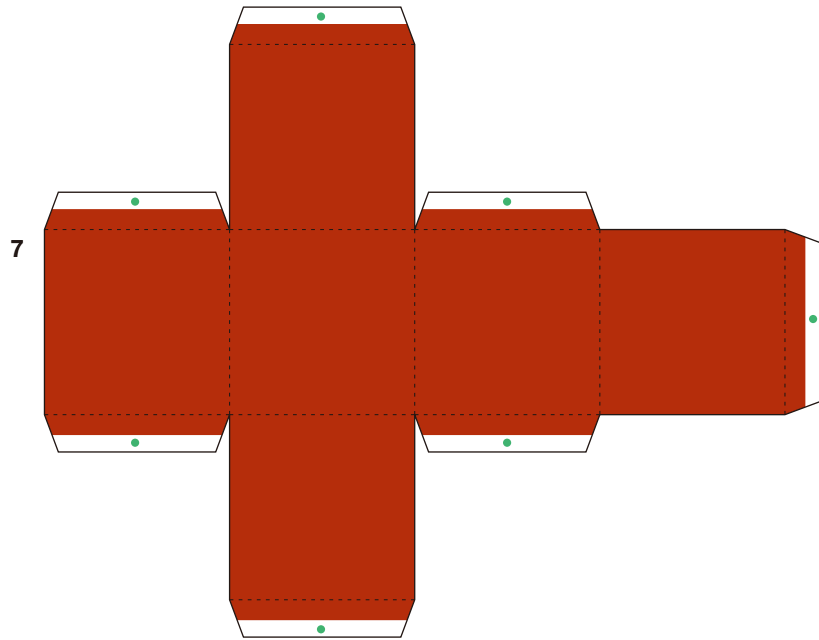


Ivy Christmas wreath (classic style): Pattern

© Canon Inc. © PAOPAO Inc.



Present

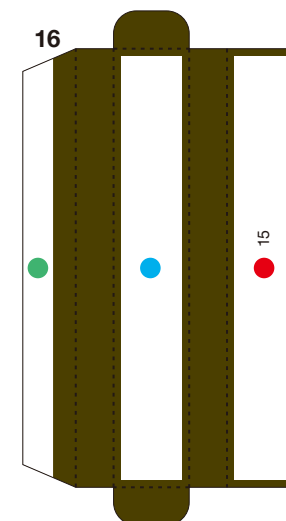
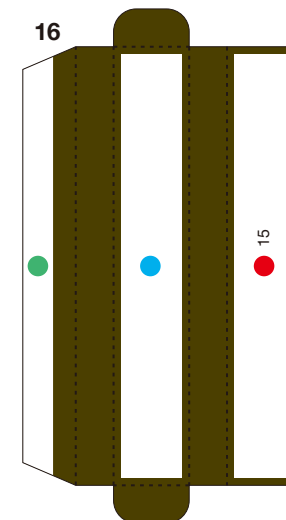
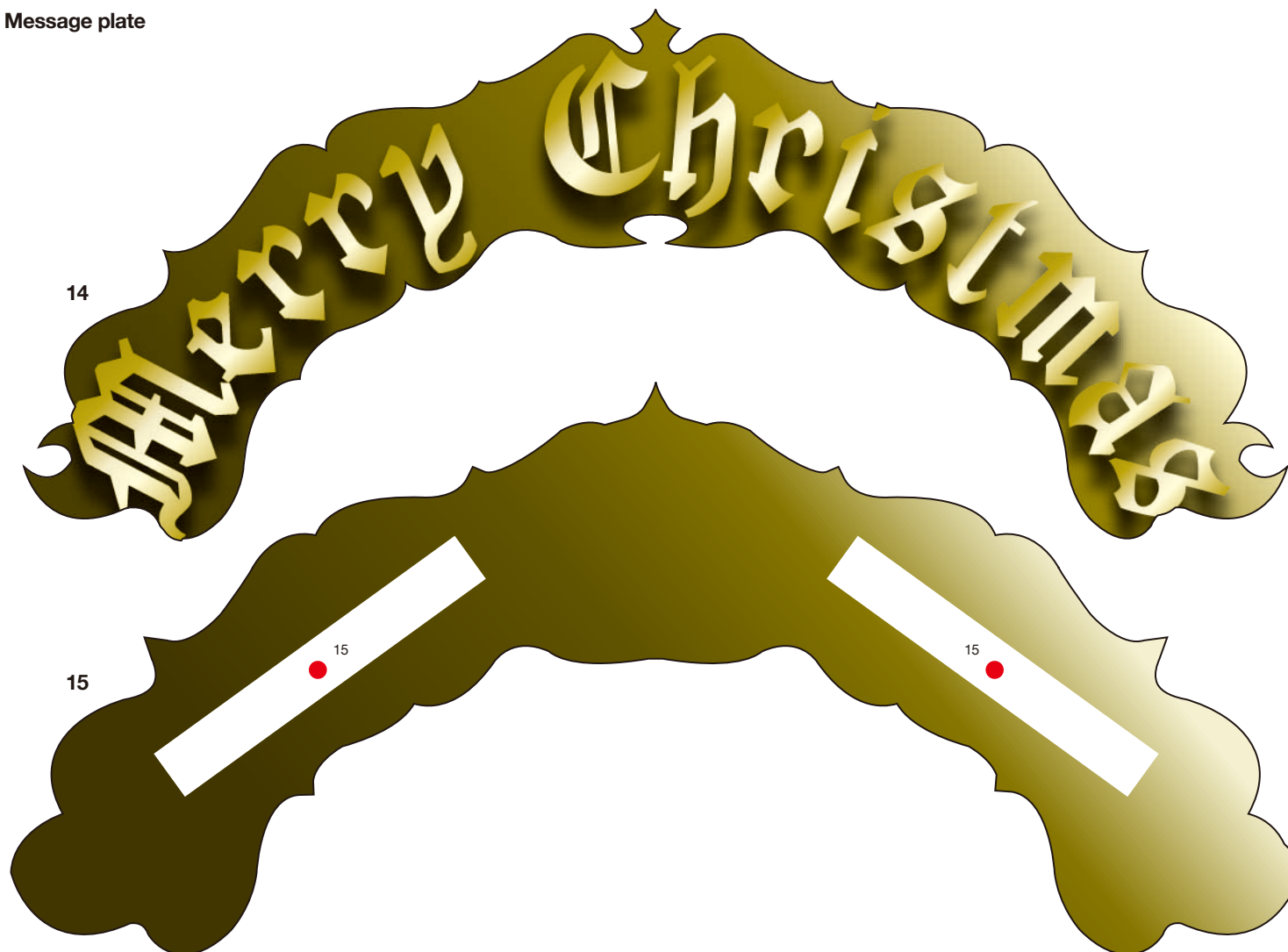


Ivy Christmas wreath (classic style): Pattern

© Canon Inc. © PAOPAO Inc.

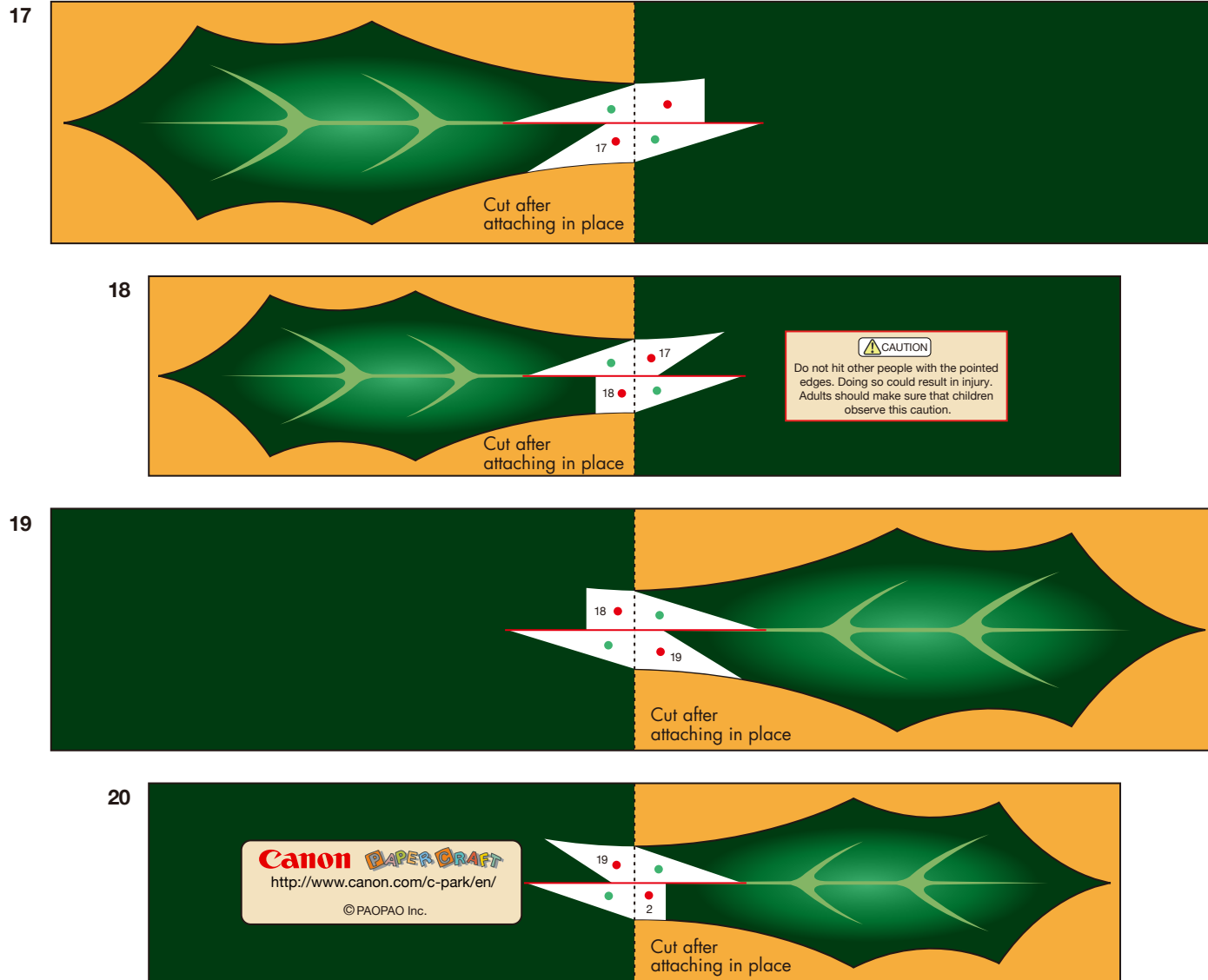


Message plate

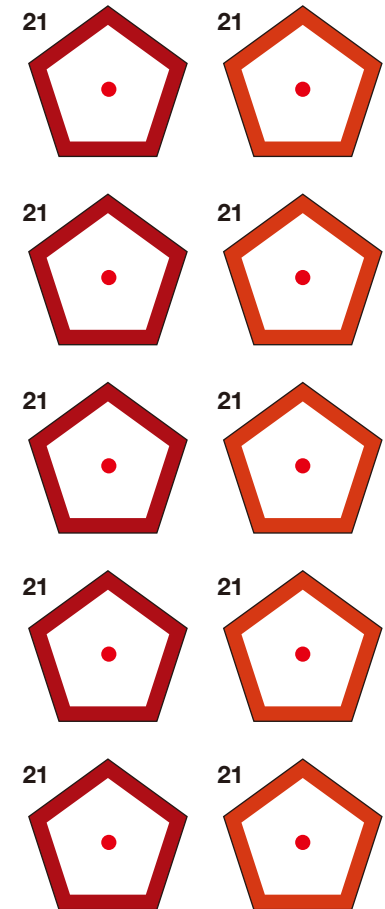


Ivy Christmas wreath (classic style): Pattern

Holly leaves (At this point, don't cut or make indentations along the cut and indentation lines on the inside.)



Berries: bottom



Ivy Christmas wreath (classic style): Pattern

Berries: main body

