

Heart Christmas wreath: Assembly Instructions

© Canon Inc. © Takako Takahashi



PAPER CRAFT

<http://www.canon.com/c-park/en/>



View of completed model

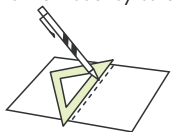
Heart Christmas wreath

Wreaths are used at Christmas time to decorate places like entrances to homes. Various theories offer explanations of wreath's origins: in terms of religious significance, the holly leaves may symbolize Christ's sufferings on the cross and the red berries the blood of Christ. Another theory is that evergreens were used to protect against evil due to their strong sterilizing and antibacterial effects, while the berries and ears of barley served as talismans promoting abundant harvests, making the original wreath something of a good-luck charm. Today, the wreath generally serves a merely decorative purpose. This heart wreath includes a bag shaped like a heart.

■ Parts list (pattern): Four US letter sheets (No.3 to No.6)

■ No. of Parts: 29

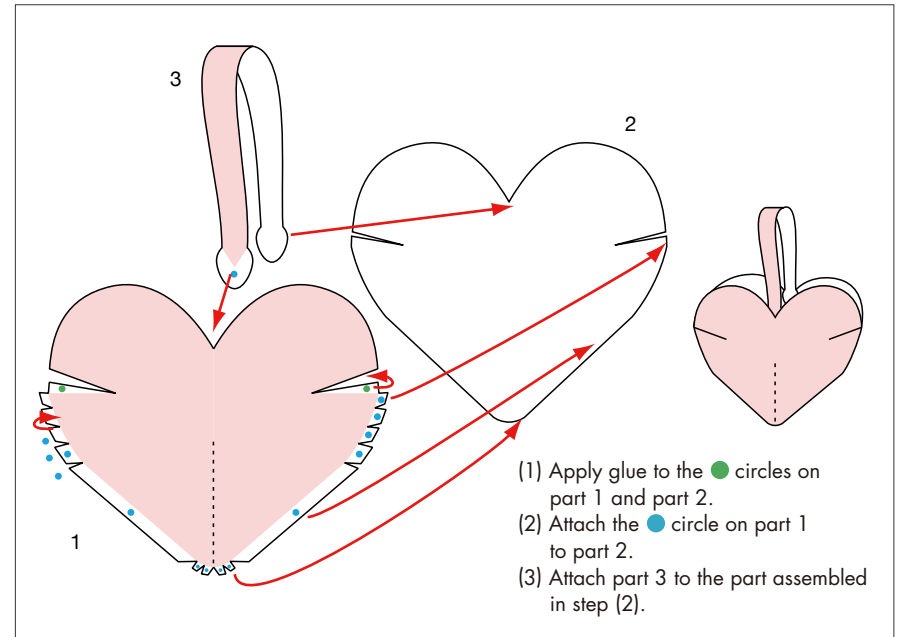
*Build the model by carefully reading the Assembly Instructions, in the parts sheet page order.



*Hint: Trace along the folds with a ruler and an exhausted pen (no ink) to get a sharper, easier fold.

Before starting assembly: Writing the number of each section on its back side before cutting out the sections is highly recommended.
(* This way, you can be sure which section is which even after cutting out the sections.)

→ Indicates where sections should be glued together.



Assembly Instructions

	Mountain fold(dotted line) Make a mountain fold.	 Glue The glue spot(colored dot) shows where to apply the glue.
	Valley fold(dashed and dotted line) Make a valley fold.	
	Scissors line(solid line) Cut along the line.	
	Cut in line(solid line) Cut along the line.	
		● Glue spot(Red dot) Glue parts with the same number together.
		● Glue spot(Green dot) Glue within the same part.
		● Glue spot(Blue dot) Glue to the rear of the other part.

Tools and materials



Scissors, set square, glue(We recommend stick glue), pencil, used ballpoint pen, toothpicks, tweezers, (useful for handling small parts)

Assembly tip



Before gluing, crease the paper along mountain fold and valley fold lines and make sure rounded sections are nice and stiff.

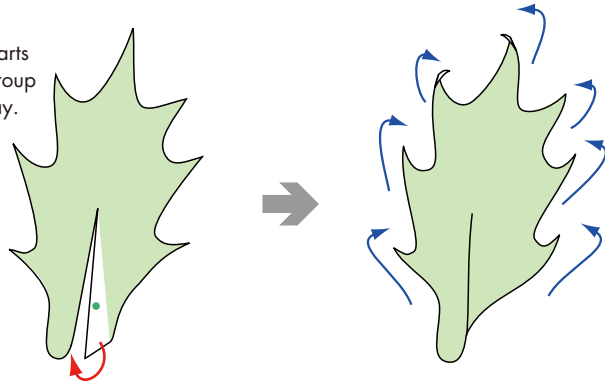
Caution



Glue, scissors and other tools may be dangerous to young children so be sure to keep them out of the reach of young children.

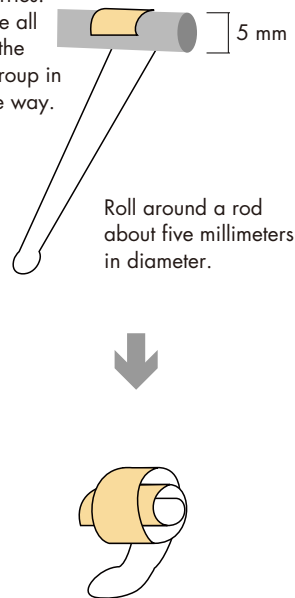
Heart Christmas wreath: Assembly Instructions

Holly leaves:
Assemble all parts
in the part 4 group
in the same way.



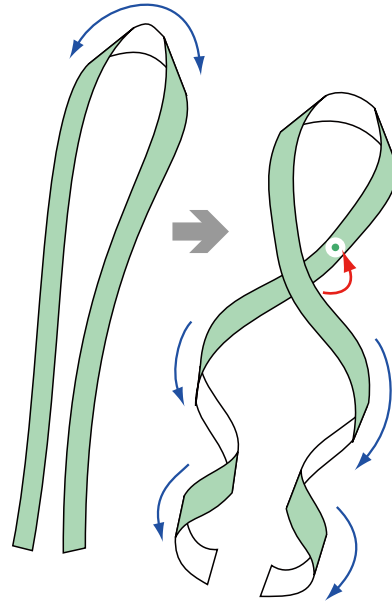
The holly leaves will appear sharper
if you curve their tips slightly inward.

Holly berries:
Assemble all
parts in the
part 5 group
in the same way.

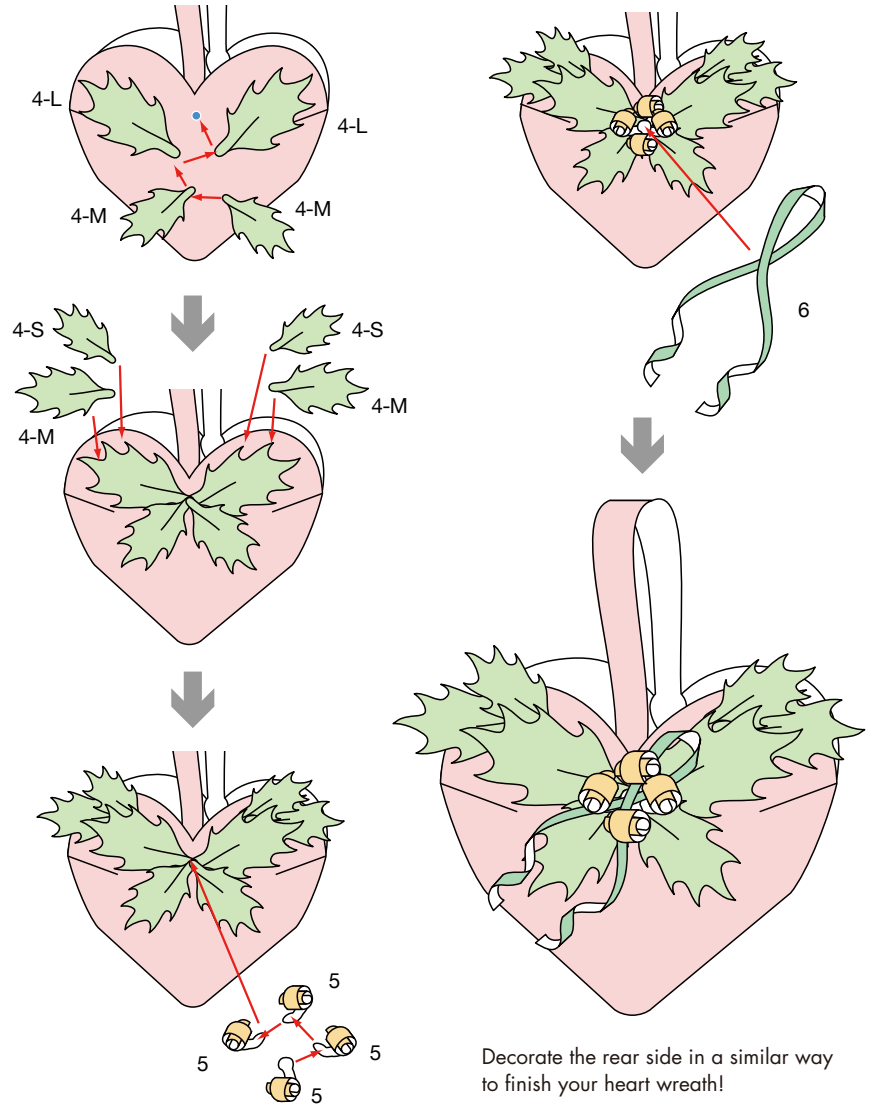


Roll around a rod
about five millimeters
in diameter.

Ribbons: Assemble all parts in the part 6
group in the same way.



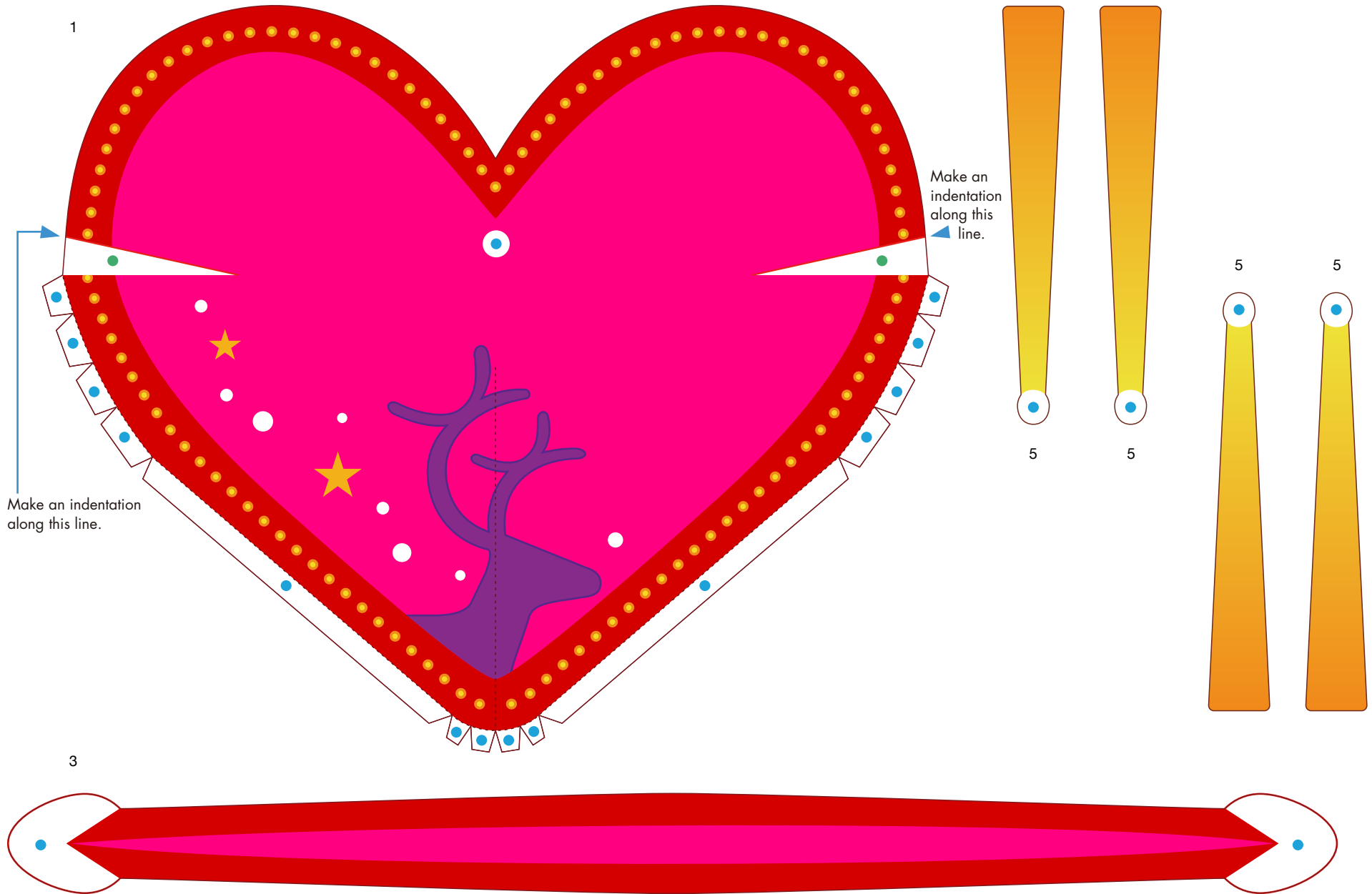
Assemble both sides in the same way.
Arrange the decorations in any way you like.
This shows an example of decorating the front of the wreath.



Decorate the rear side in a similar way
to finish your heart wreath!

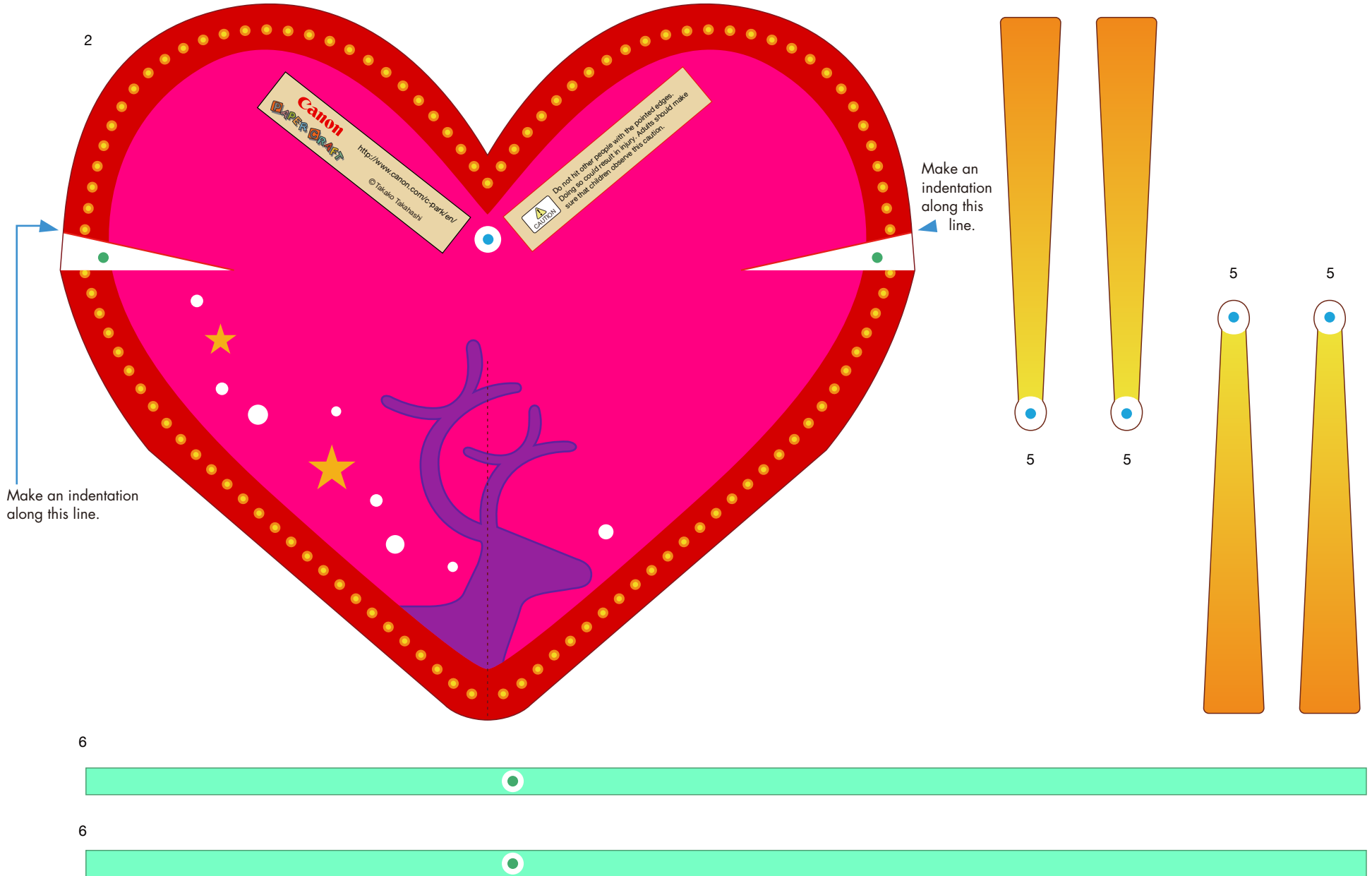
Heart Christmas wreath: Pattern

© Canon Inc. © Takako Takahashi



Heart Christmas wreath: Pattern

© Canon Inc. © Takako Takahashi



4-L



4-L



4-S



4-S



4-M



4-M



4-M



4-M



Heart Christmas wreath: Pattern

© Canon Inc. © Takako Takahashi



4-L



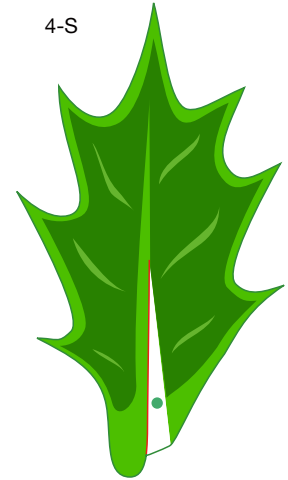
4-L



4-S



4-S



4-M



4-M



4-M



4-M

