



View of completed model

## Basic Christmas wreath

Wreaths are used at Christmas time to decorate places like entrances to homes. Various theories offer explanations of wreath's origins: in terms of religious significance, the holly leaves may symbolize Christ's sufferings on the cross and the red berries the blood of Christ. Another theory is that evergreens were used to protect against evil due to their strong sterilizing and antibacterial effects, while the berries and ears of barley served as talismans promoting abundant harvests, making the original wreath something of a good-luck charm. Today, the wreath generally serves a merely decorative purpose.

---

■ Parts list (pattern): Eleven A4 sheets (No.1 to No.11)

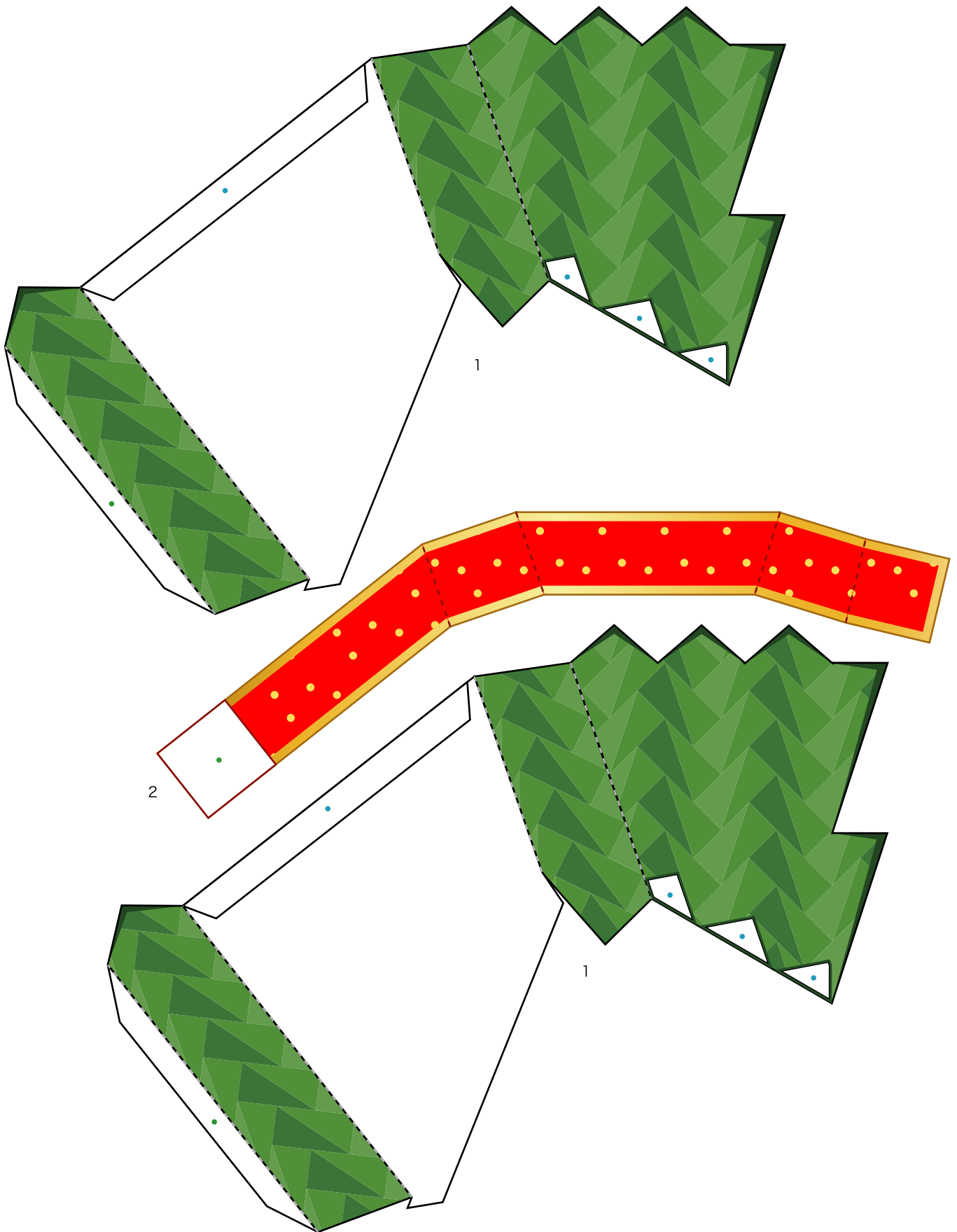
---

■ No. of Parts: 33

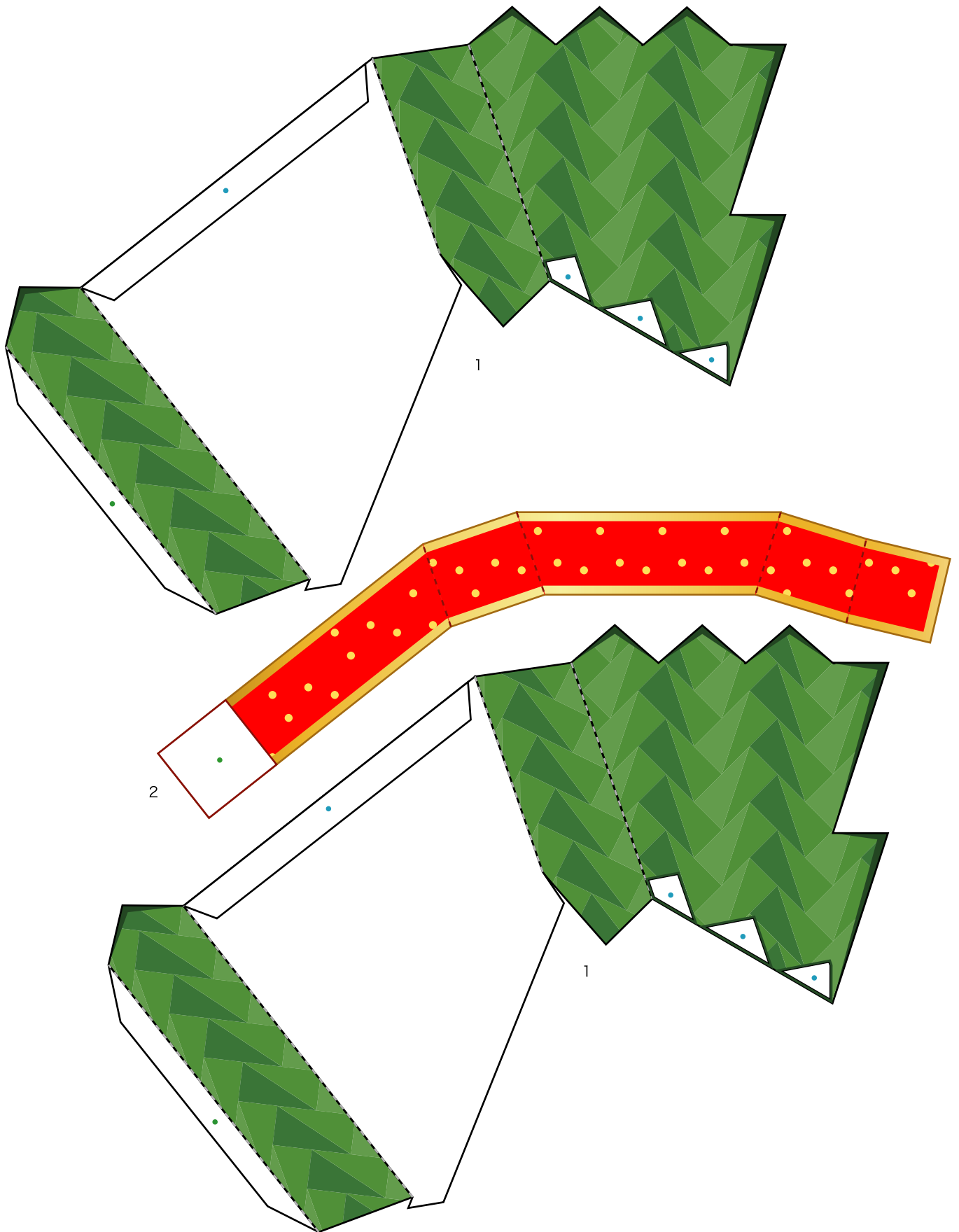
---

\* Build the model by carefully reading the Assembly Instructions, in the parts sheet page order.

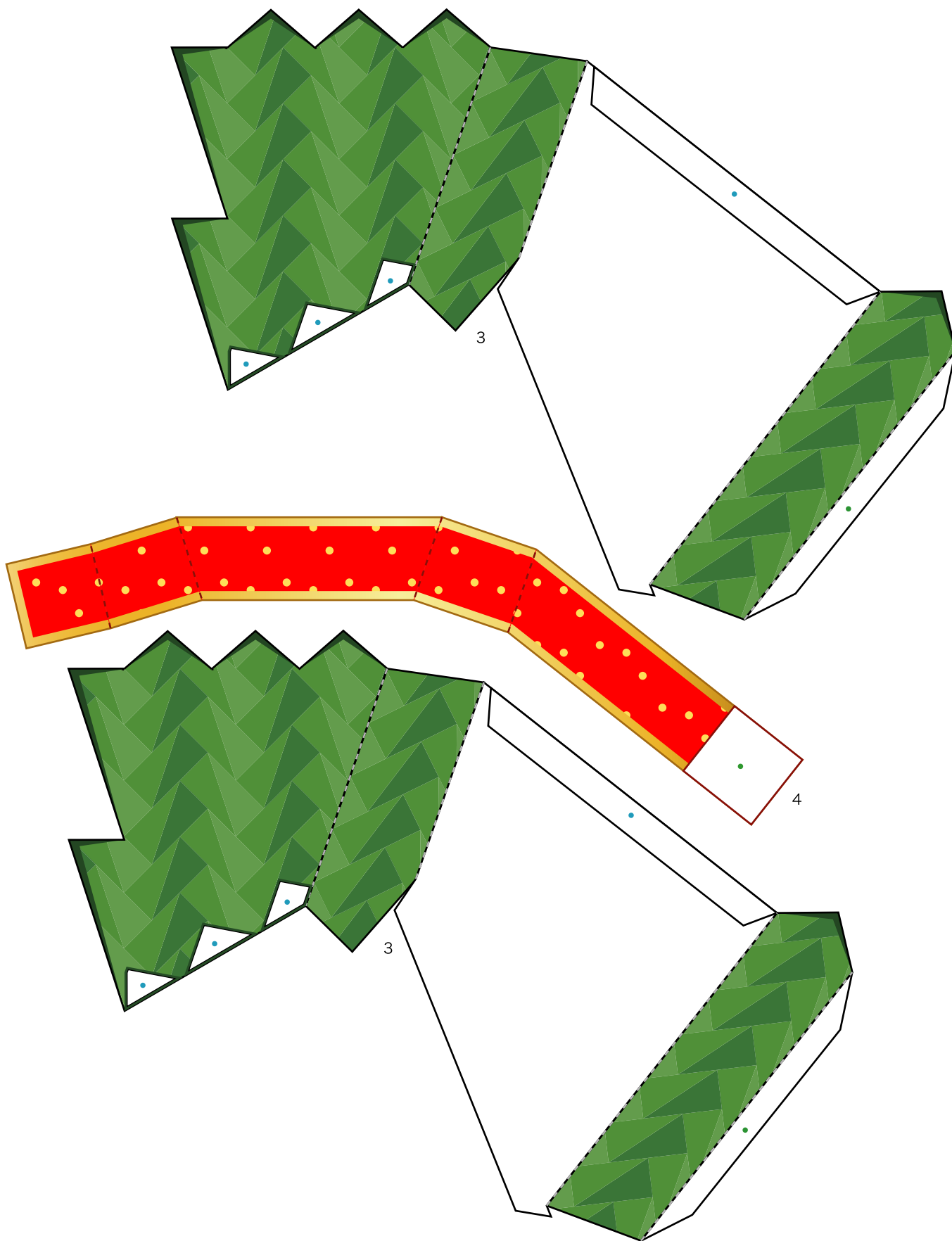
# Basic Christmas wreath: Pattern



# Basic Christmas wreath: Pattern



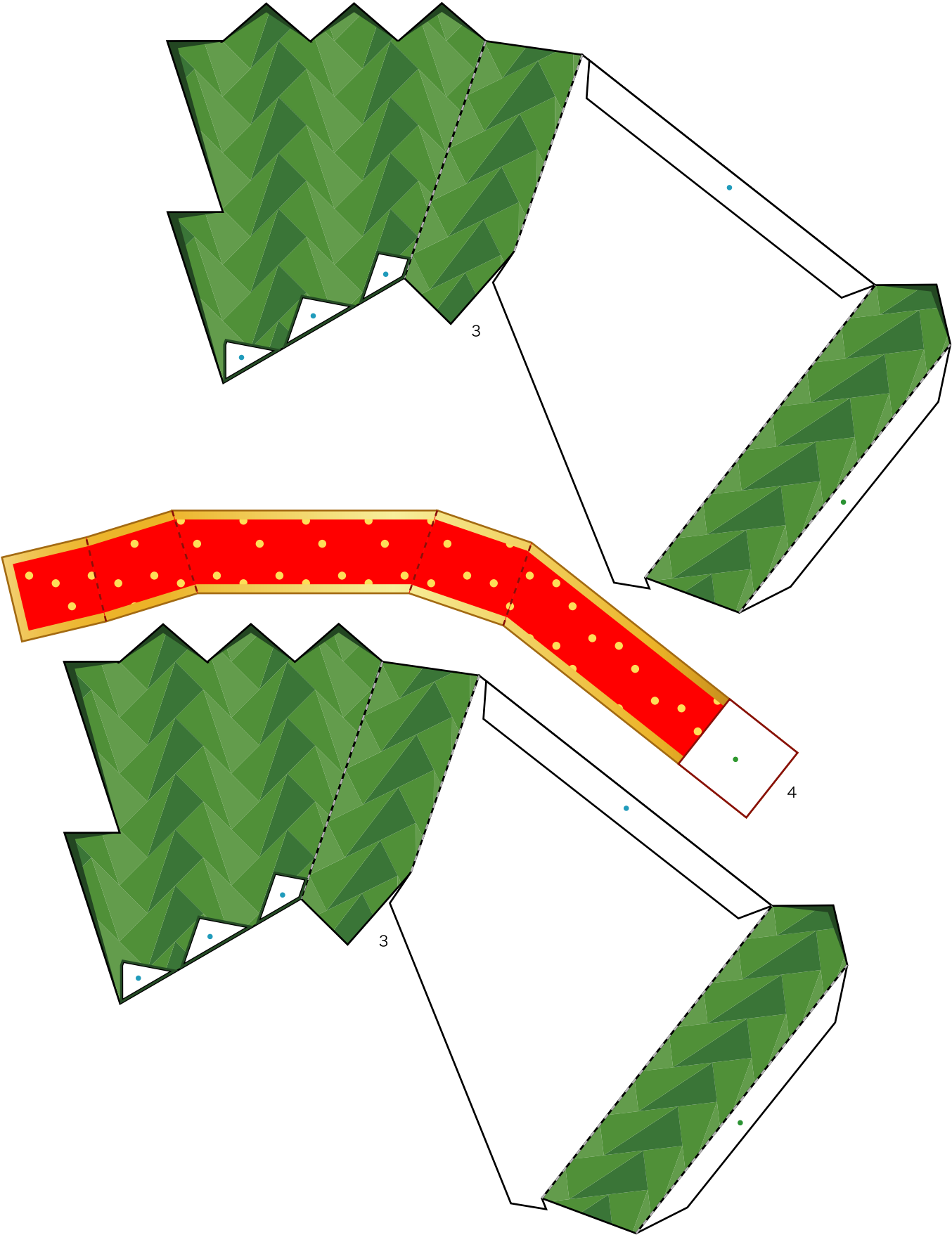
# Basic Christmas wreath: Pattern



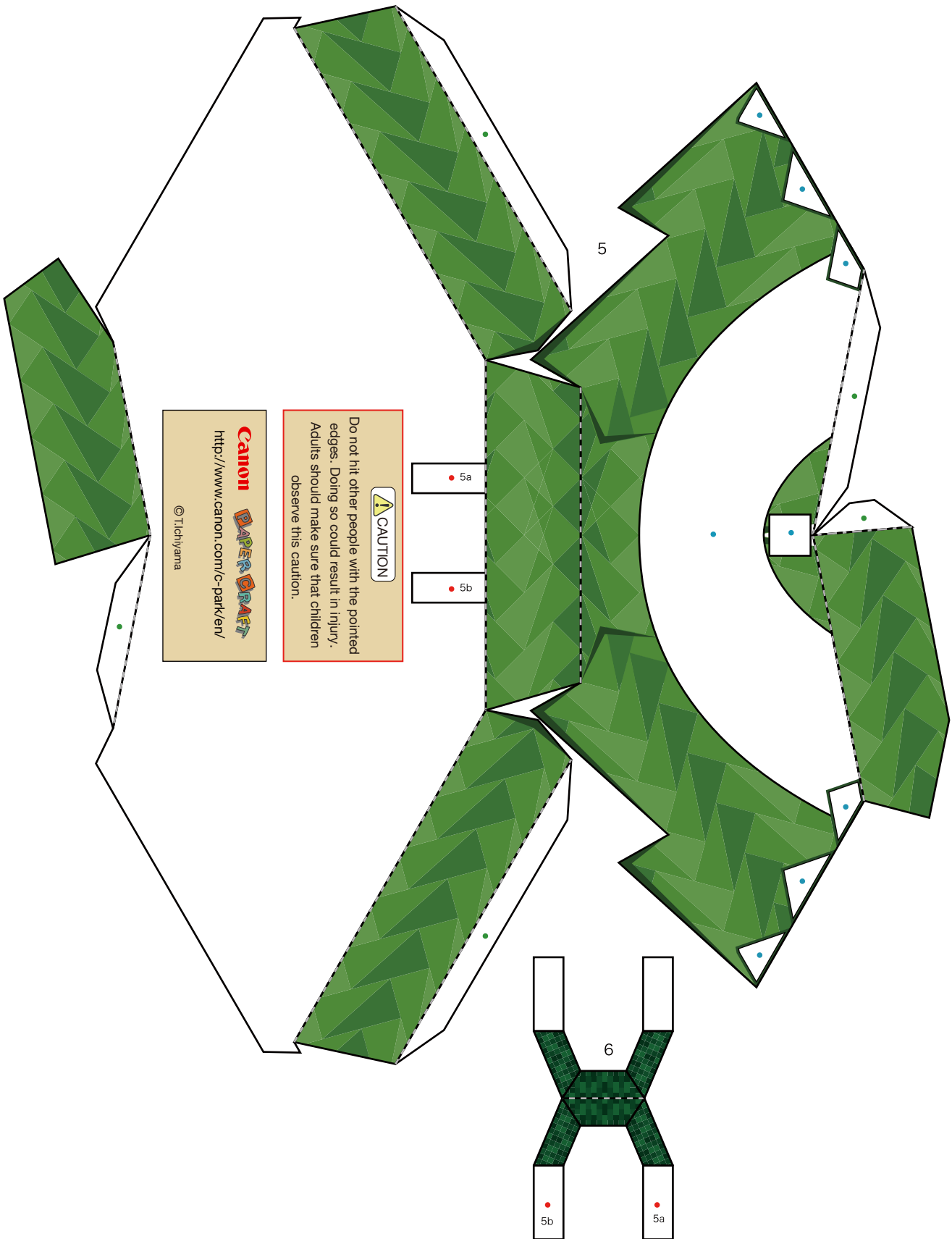
# Basic Christmas wreath: Pattern



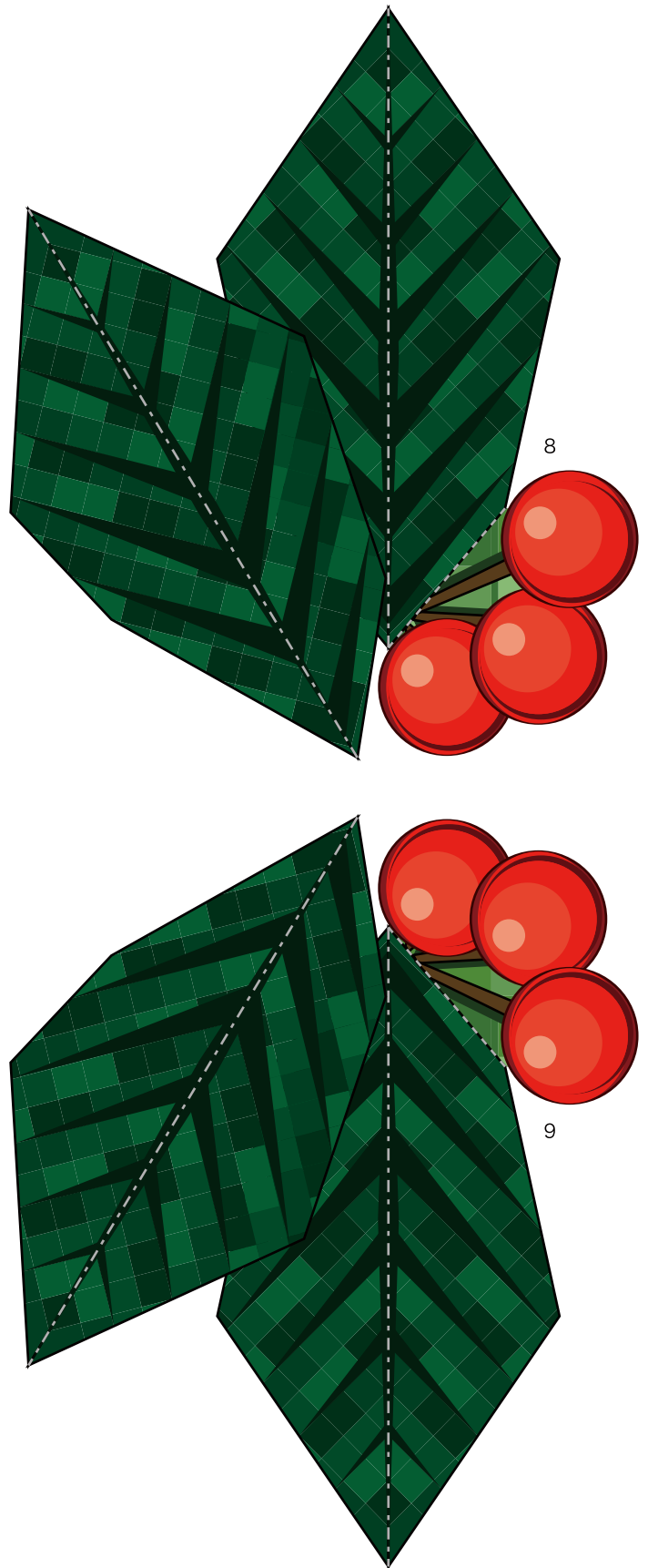
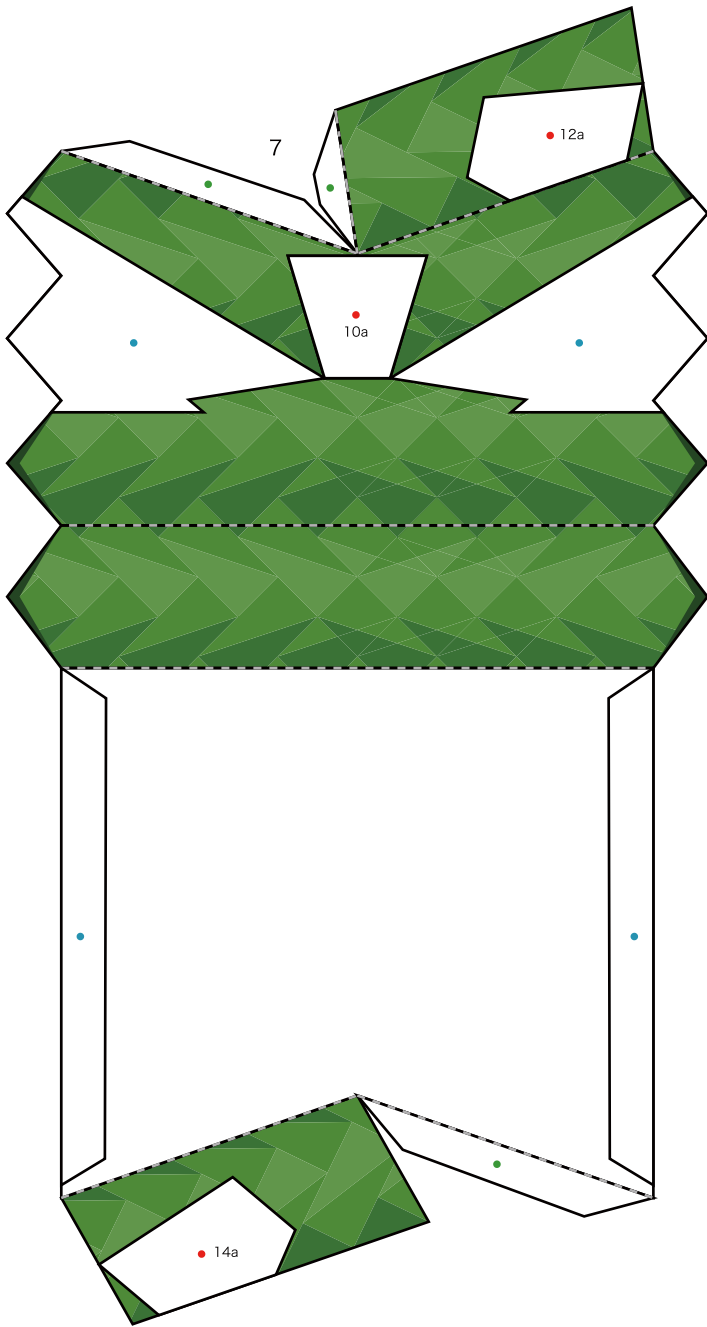
© Canon Inc. © T. Ichiyama



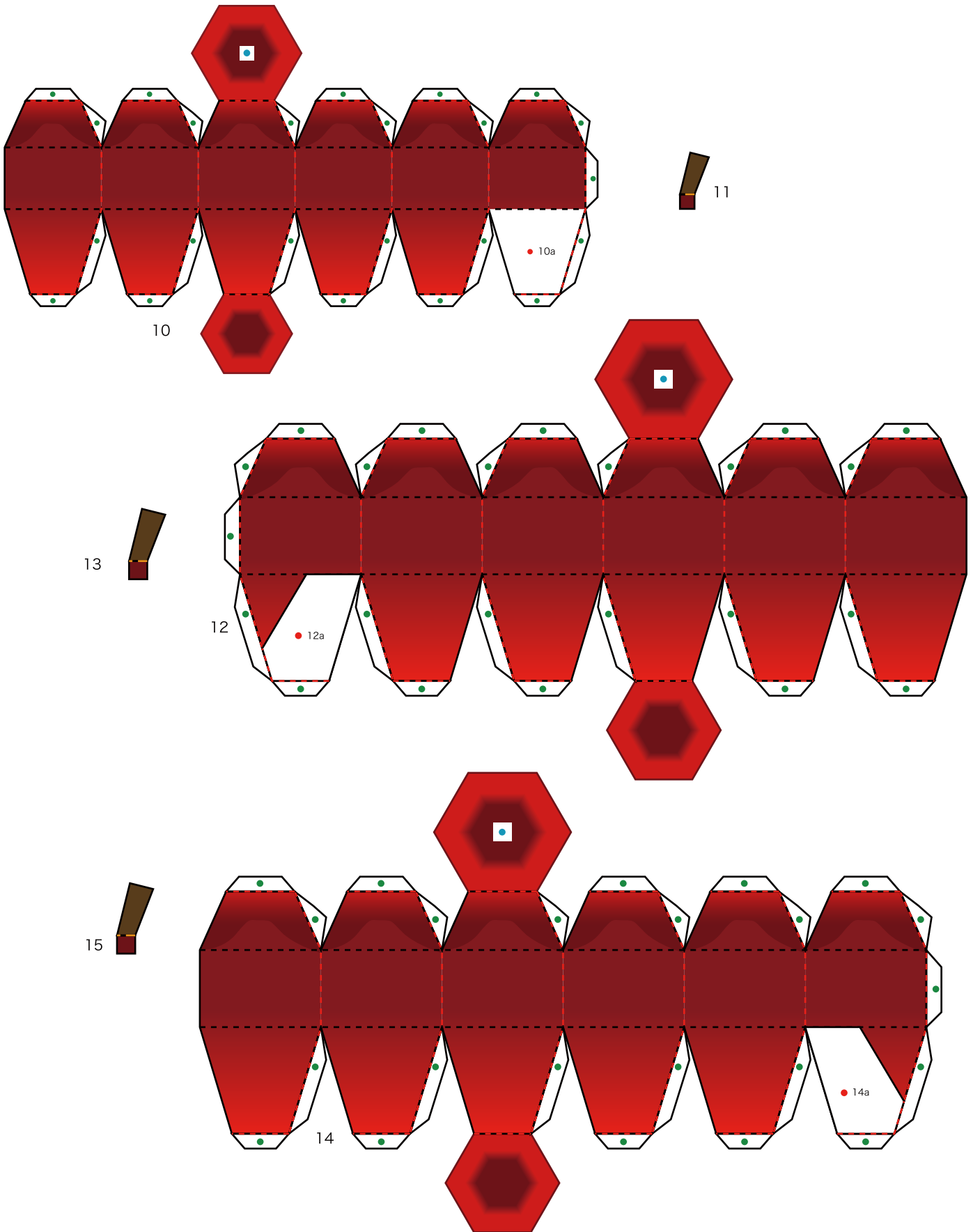
# Basic Christmas wreath: Pattern



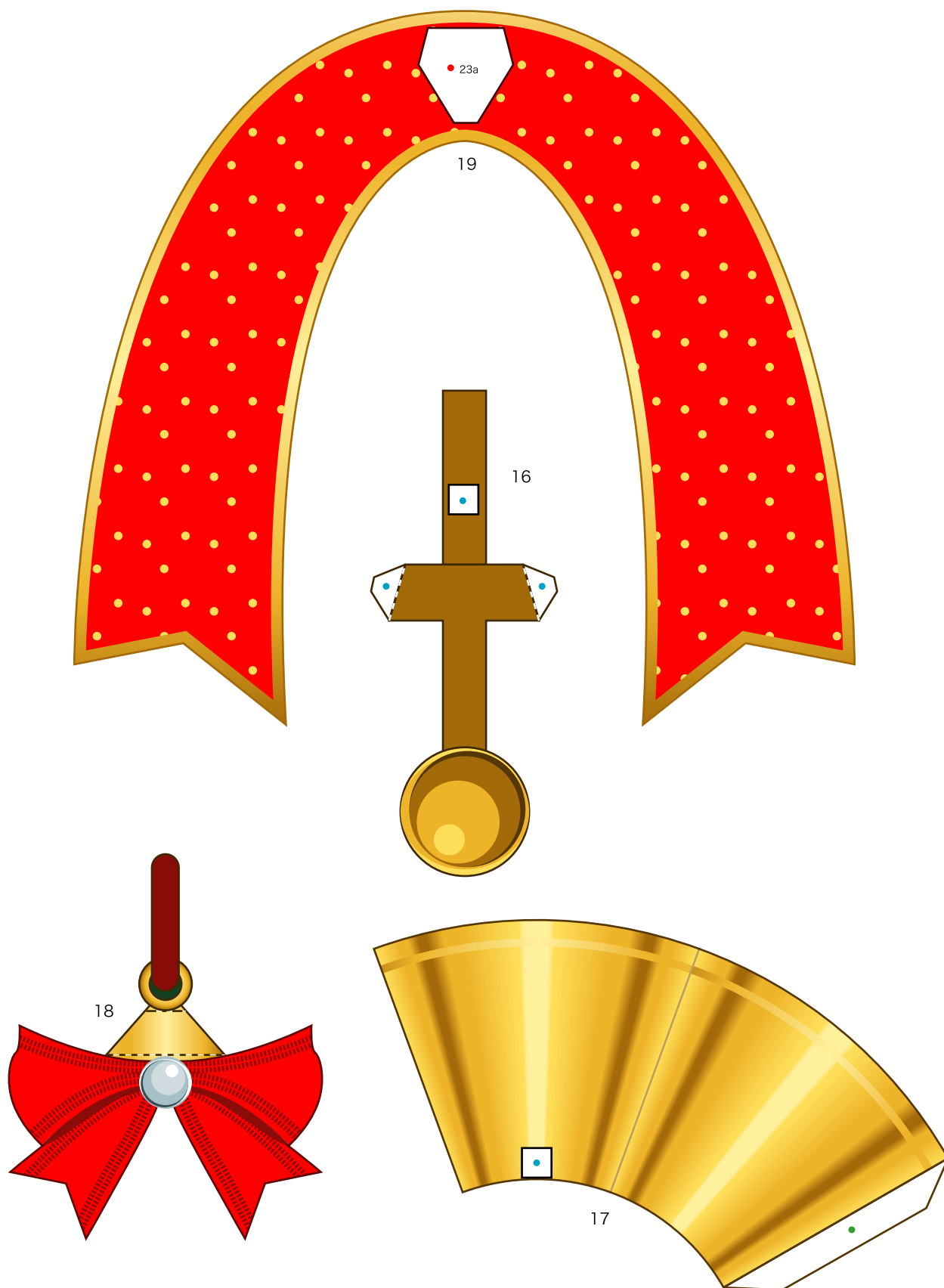
# Basic Christmas wreath: Pattern



# Basic Christmas wreath: Pattern







# Basic Christmas wreath: Pattern

