



View of completed model
(Decorated tree)



View of completed model
(The tree before decoration)

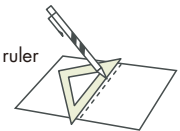
Before starting assembly:
Writing the number of each section on its back side before cutting out the sections is highly recommended.
[* This way, you can be sure which section is which even after cutting out the sections.]

- Indicates where sections should be glued together.
- Indicates where to insert sections.
Do not glue the sections together.
- Indicates sections that should be glued first, then cut out.

■ Assembly Instructions: Five US letter sheets (No.1 to No.5)

* Build the model by carefully reading the Assembly Instructions, in the parts sheet page order.

*Hint: Trace along the folds with a ruler and an exhausted pen (no ink) to get a sharper, easier fold.



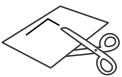
Assembly Instructions



Mountain fold (dotted line)
Make a mountain fold.



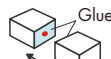
Valley fold (dashed and dotted line)
Make a valley fold.



Scissors line (solid line)
Cut along the line.



Cut in line (solid line)
Cut along the line.



Glue
The glue spot (colored dot) shows where to apply the glue.

- Glue spot (Red dot)**
Glue parts with the same number together.
- Glue spot (Green dot)**
Glue within the same part.
- Glue spot (Blue dot)**
Glue to the rear of the other part.

Tools and materials



Scissors, set square, glue (We recommend stick glue), pencil, used ballpoint pen, toothpicks, tweezers, (useful for handling small parts)

Assembly tip

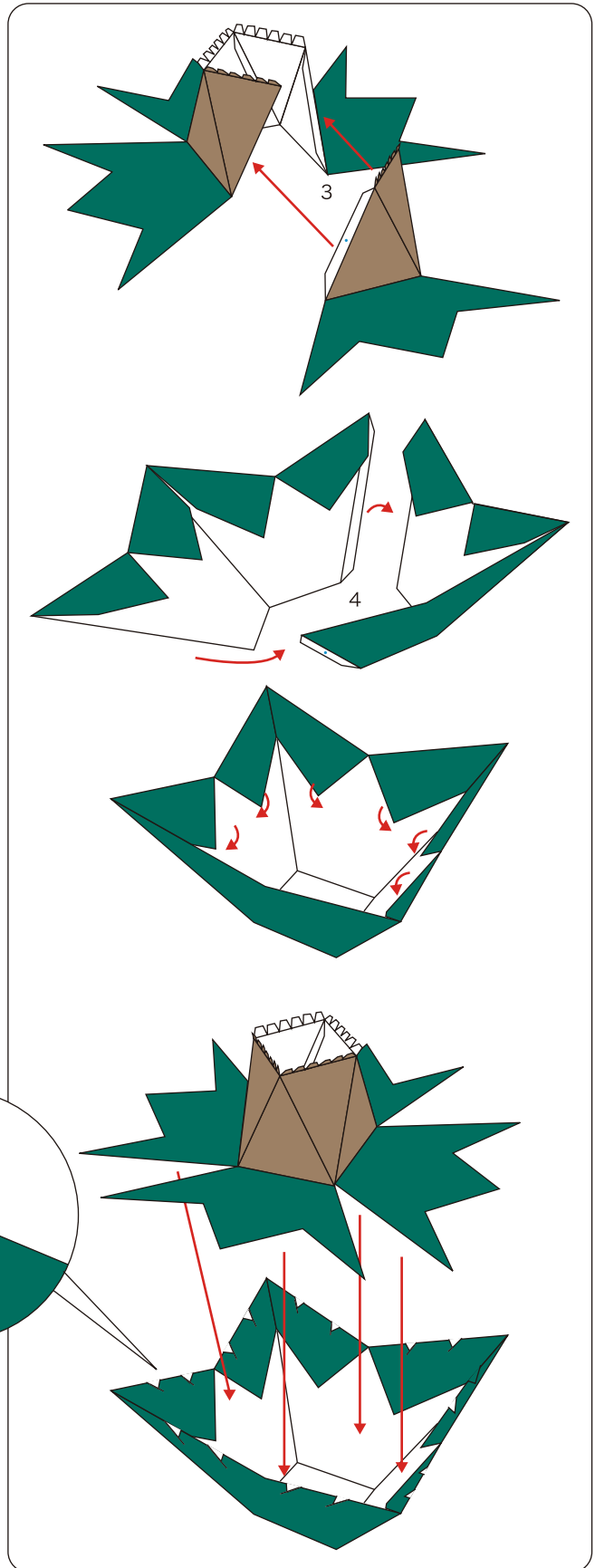
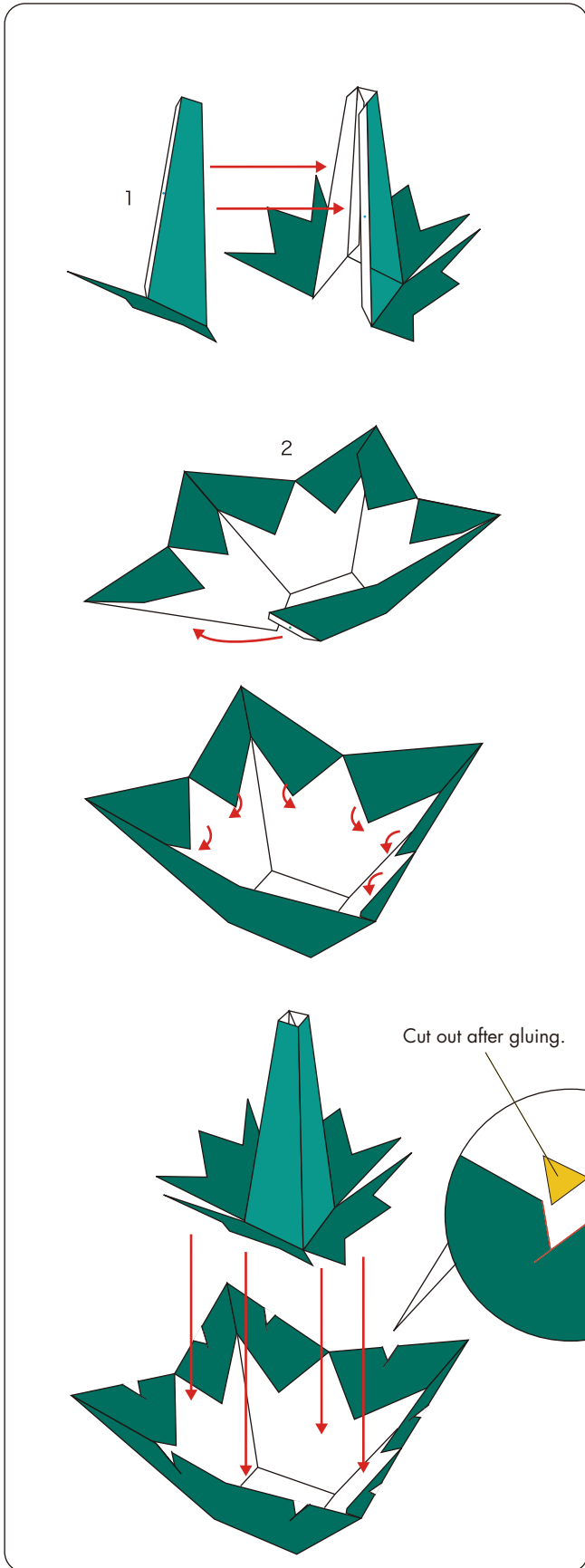


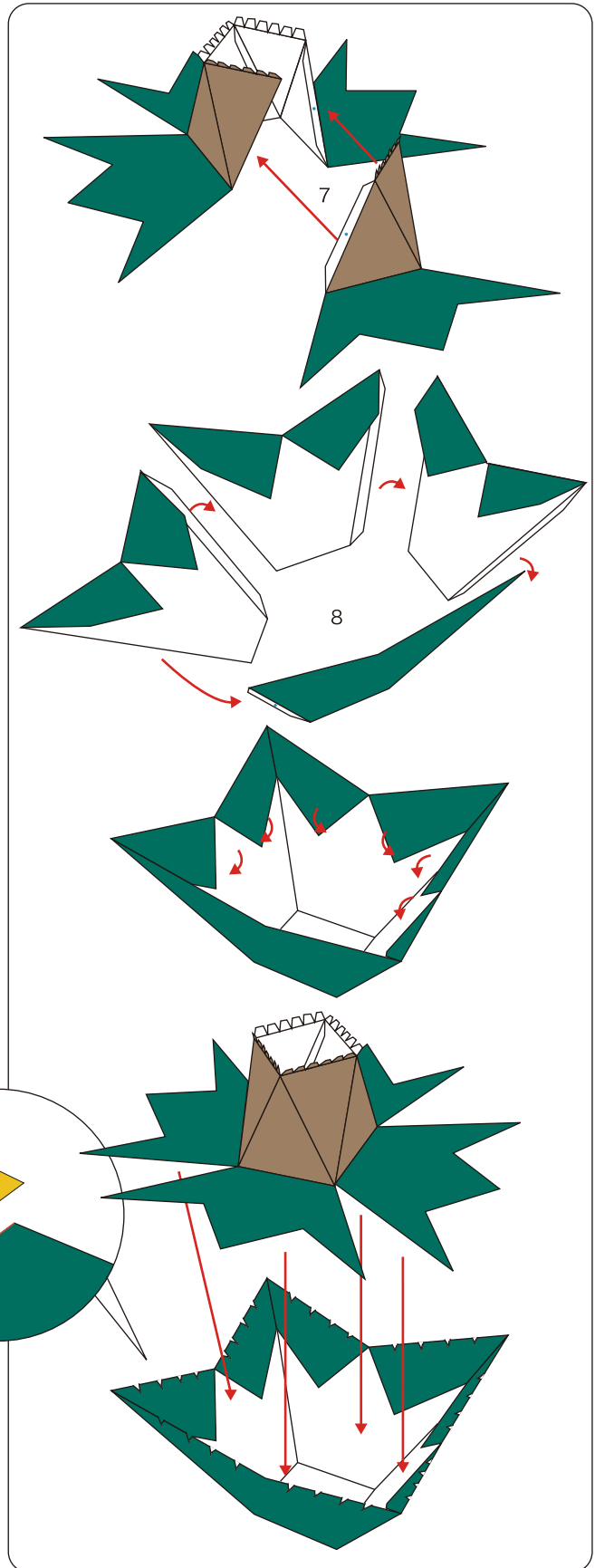
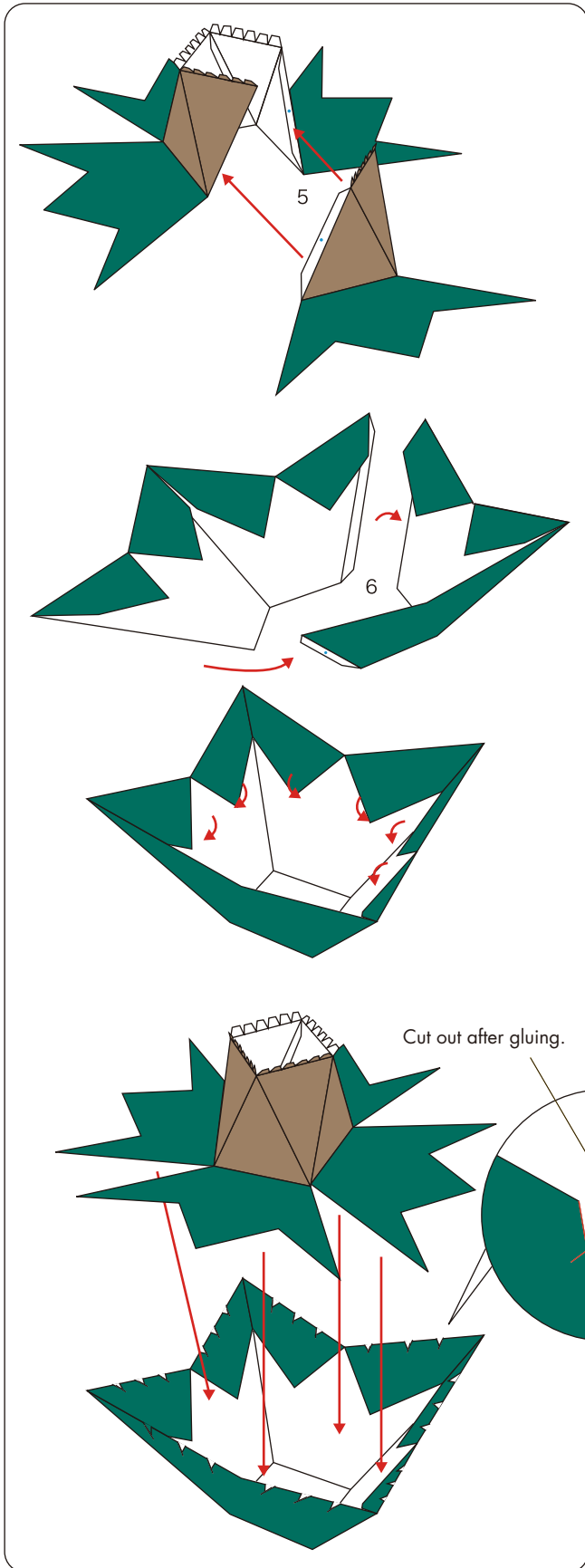
Before gluing, crease the paper along mountain fold and valley fold lines and make sure rounded sections are nice and stiff.

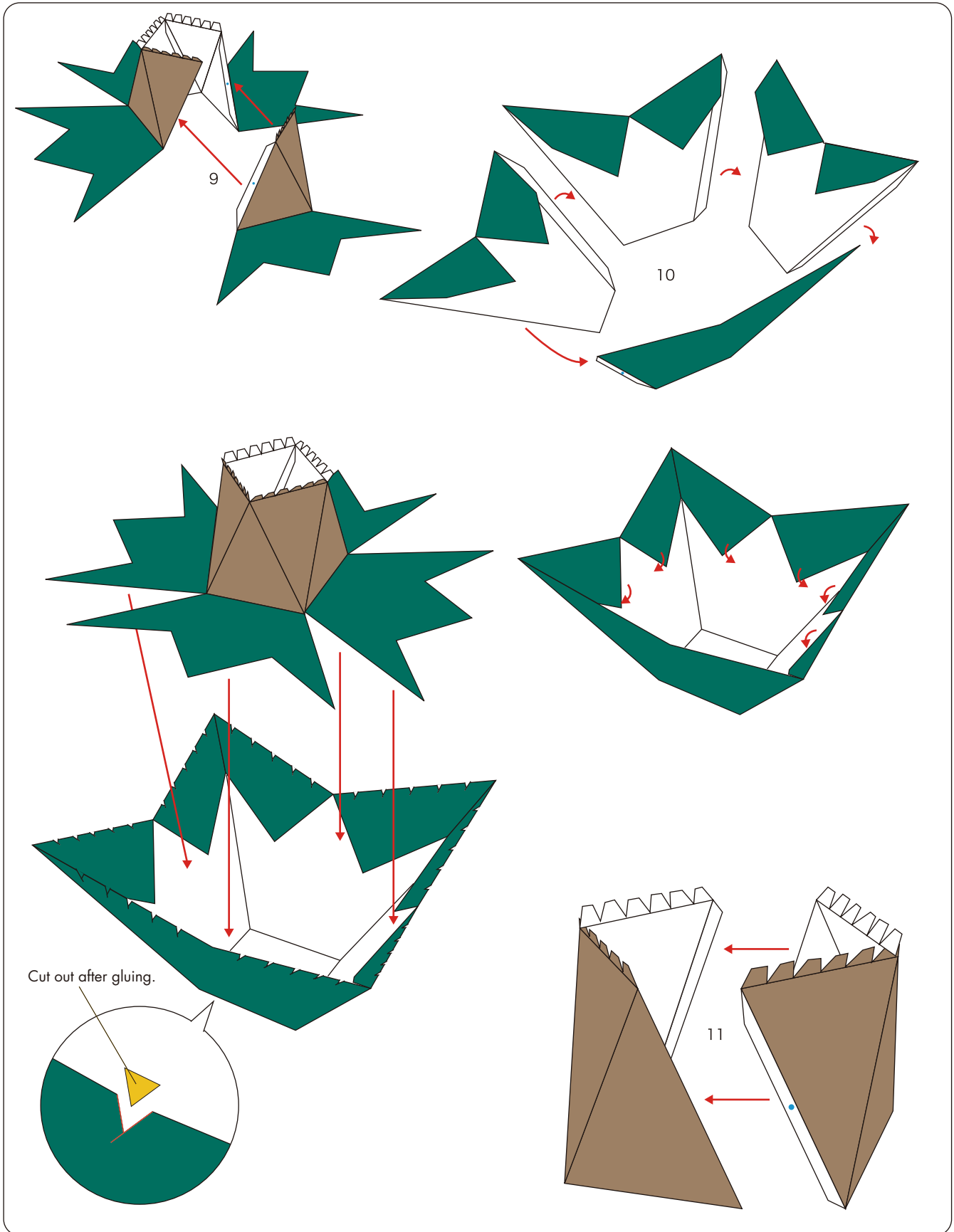
Caution

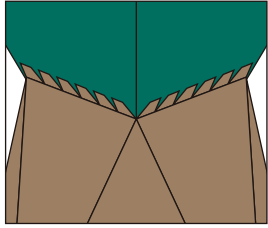


Glue, scissors and other tools may be dangerous to young children so be sure to keep them out of the reach of young children.

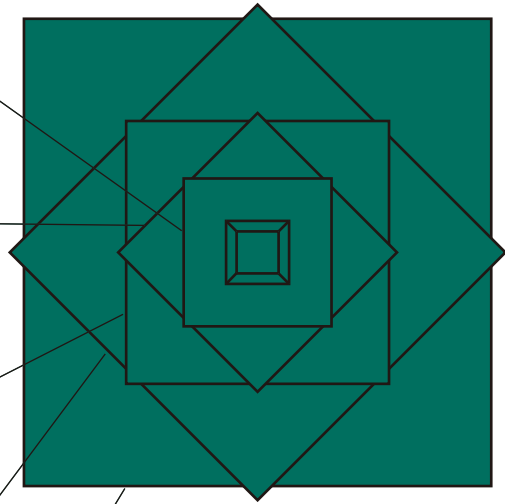
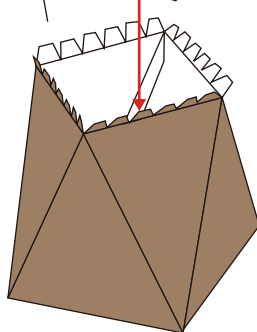
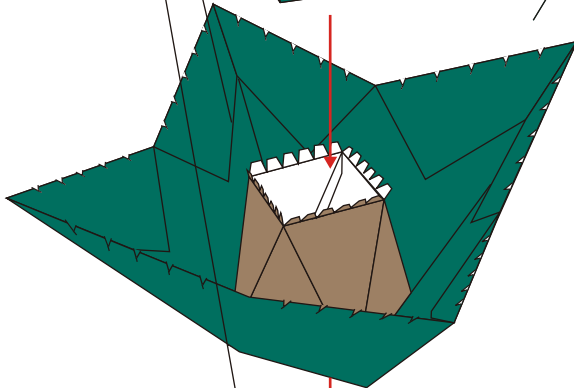
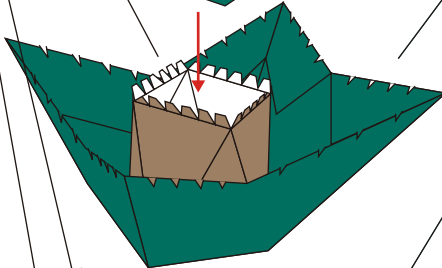
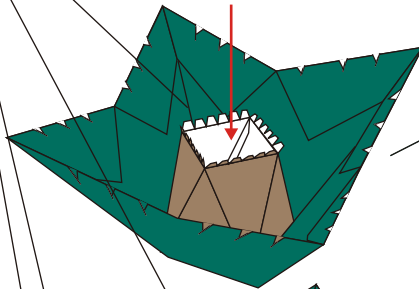
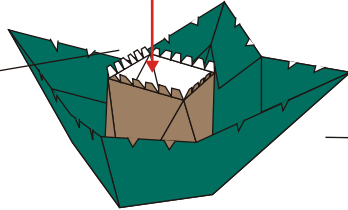
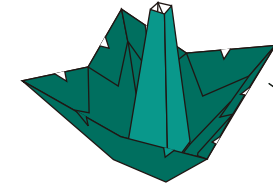








Glue the trunk to the outside of the leaves.



Glue the parts together so that the tree appears as shown above when viewed from the top.



Finished!