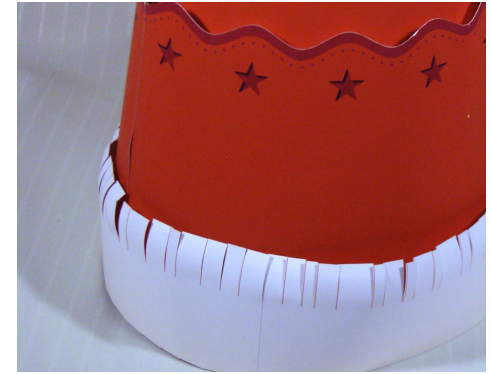
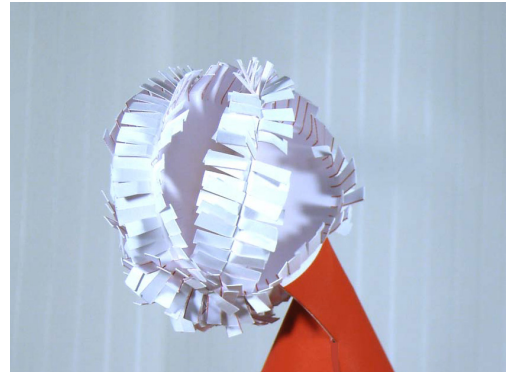




<http://www.canon.com/c-park/en/>



View of completed model



Hat size: L (approximately 60 centimeters circumference)

Santa's hat (Christmas)

The figure of Santa Claus is based St. Nicholas, an actual Christian bishop who lived in the fourth century. Born in what is now part of Turkey, Nicholas was known for his deep sense of charity. Said to have been one of the most popular of the saints, Nicholas was named a saint for various works, including bringing miracles to poor families.

Although representations of Santa Claus wearing white and blue clothing had appeared earlier, today's image of Santa in his red clothing and red hat apparently emerged in the 19th century, based on a popular Christmas card by a German illustrator named Schwindt.

■ Parts list (pattern): Nineteen US letter sheets (No.1 to No.19)

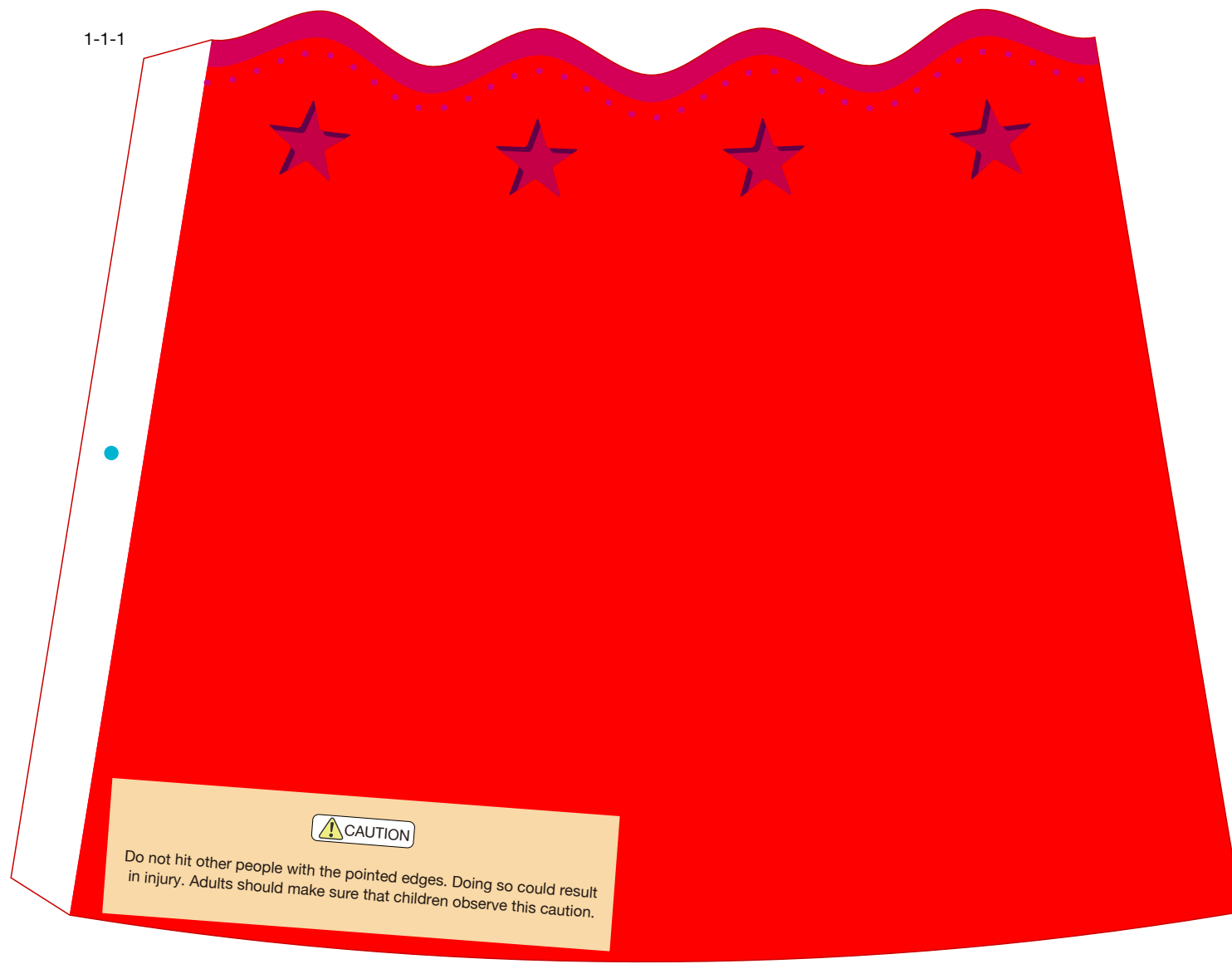
■ No. of Parts: 29

*Build the model by carefully reading the Assembly Instructions, in the parts sheet page order.

Santa's hat (Christmas, size L): Pattern

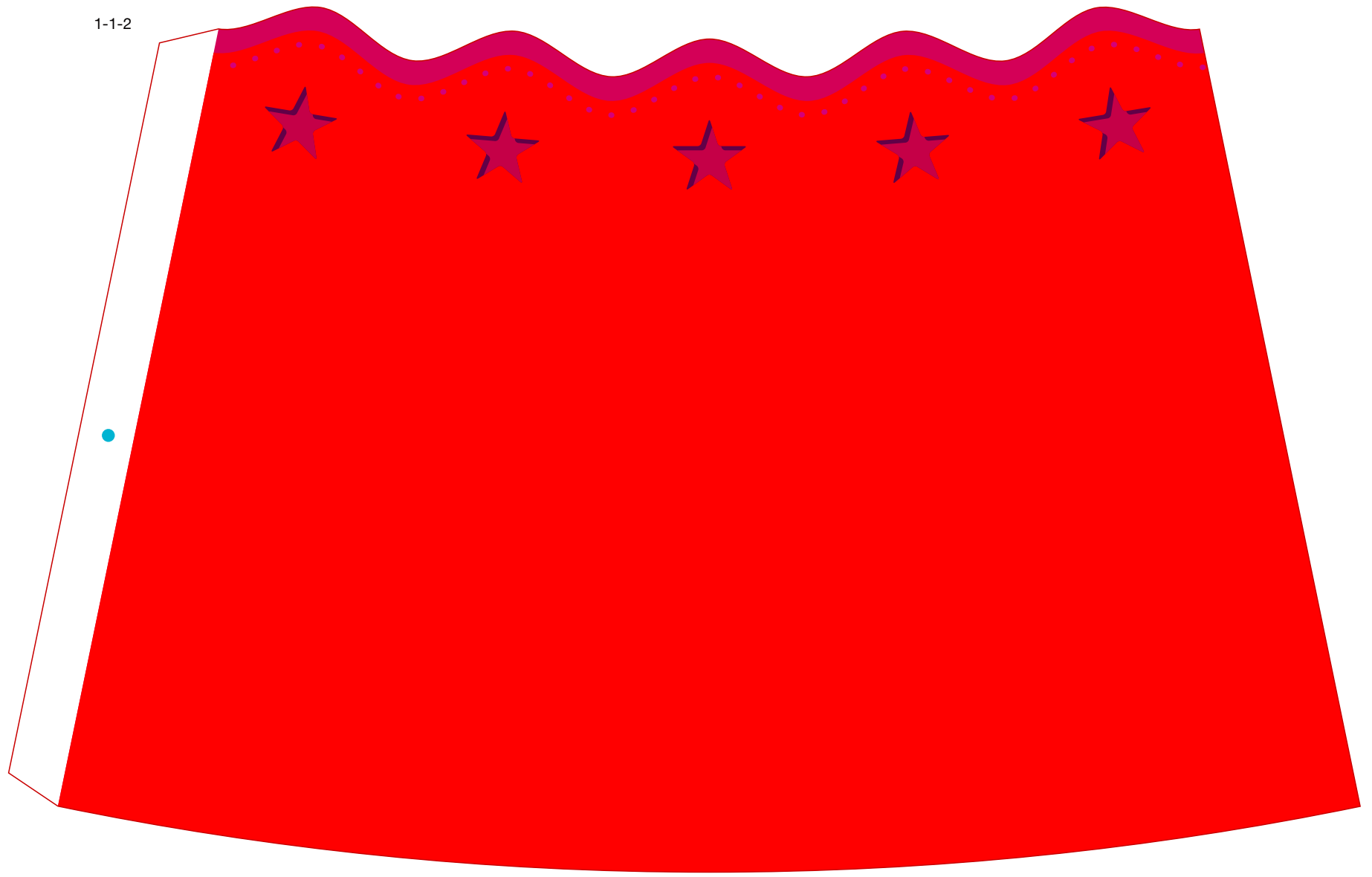
© Canon Inc. © Takako Takahashi

Canon



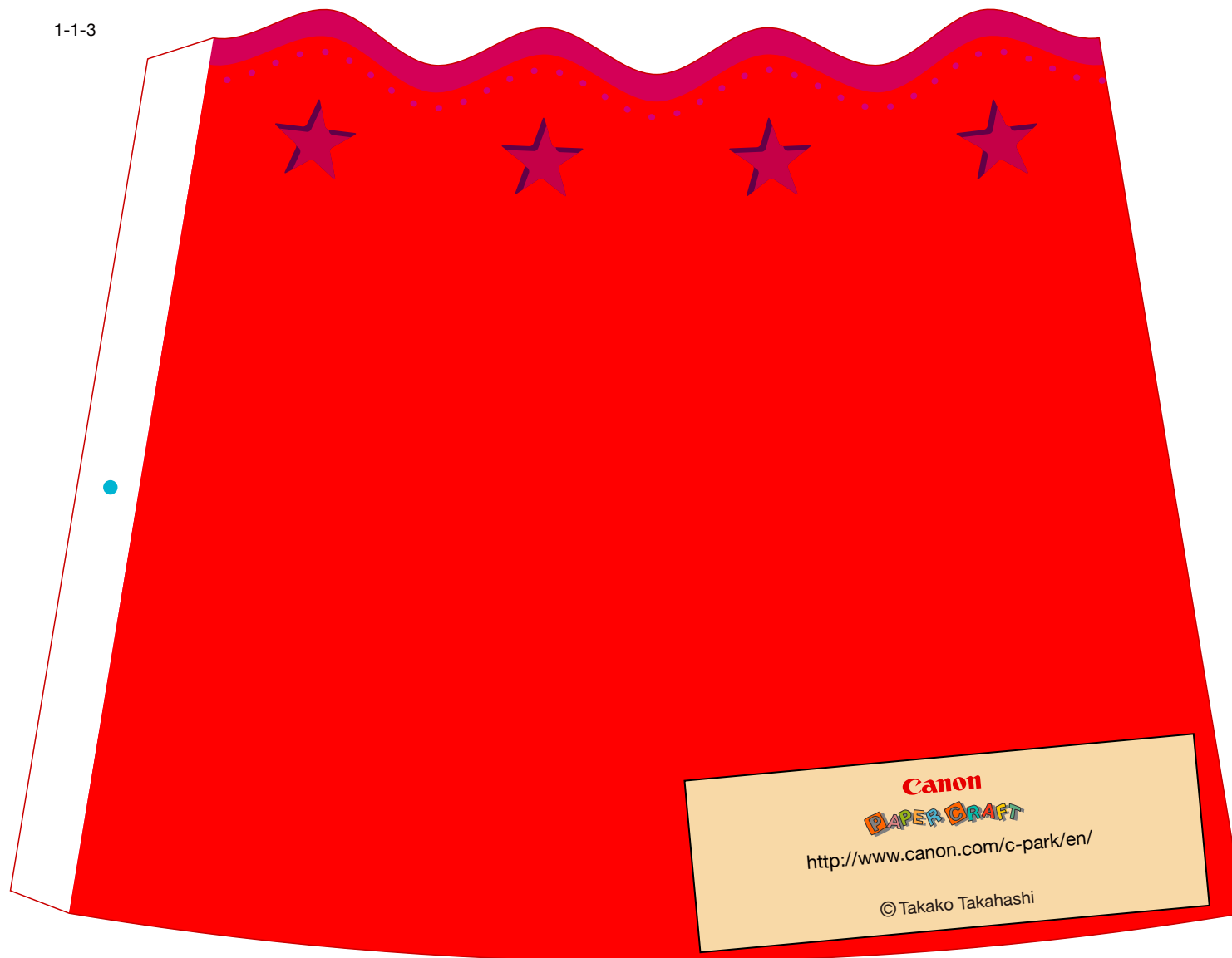
Santa's hat (Christmas, size L): Pattern

© Canon Inc. © Takako Takahashi



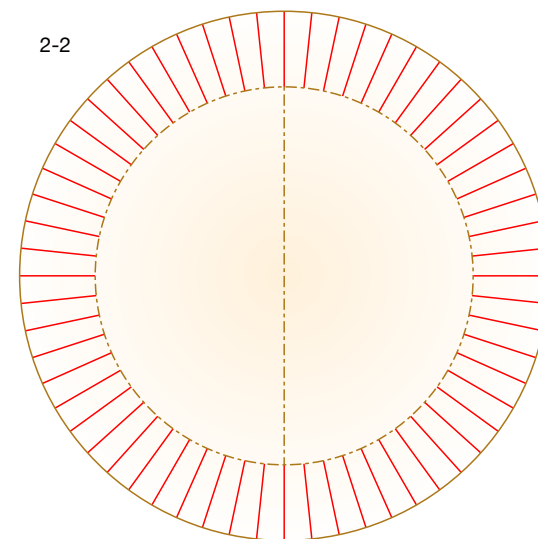
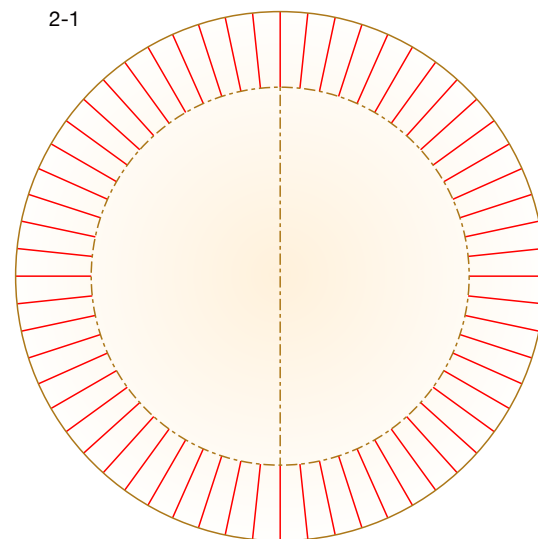
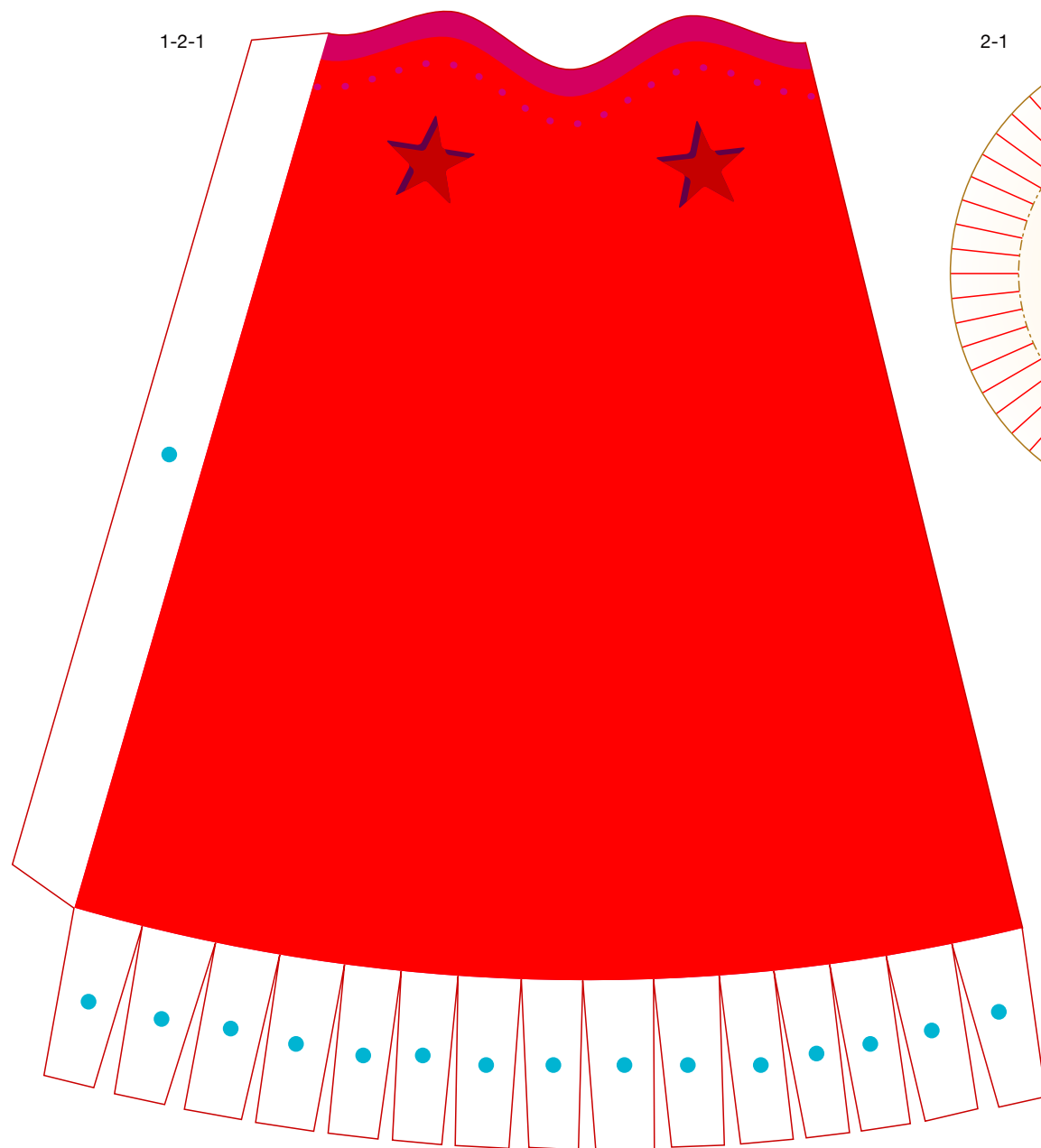
Santa's hat (Christmas, size L): Pattern

© Canon Inc. © Takako Takahashi



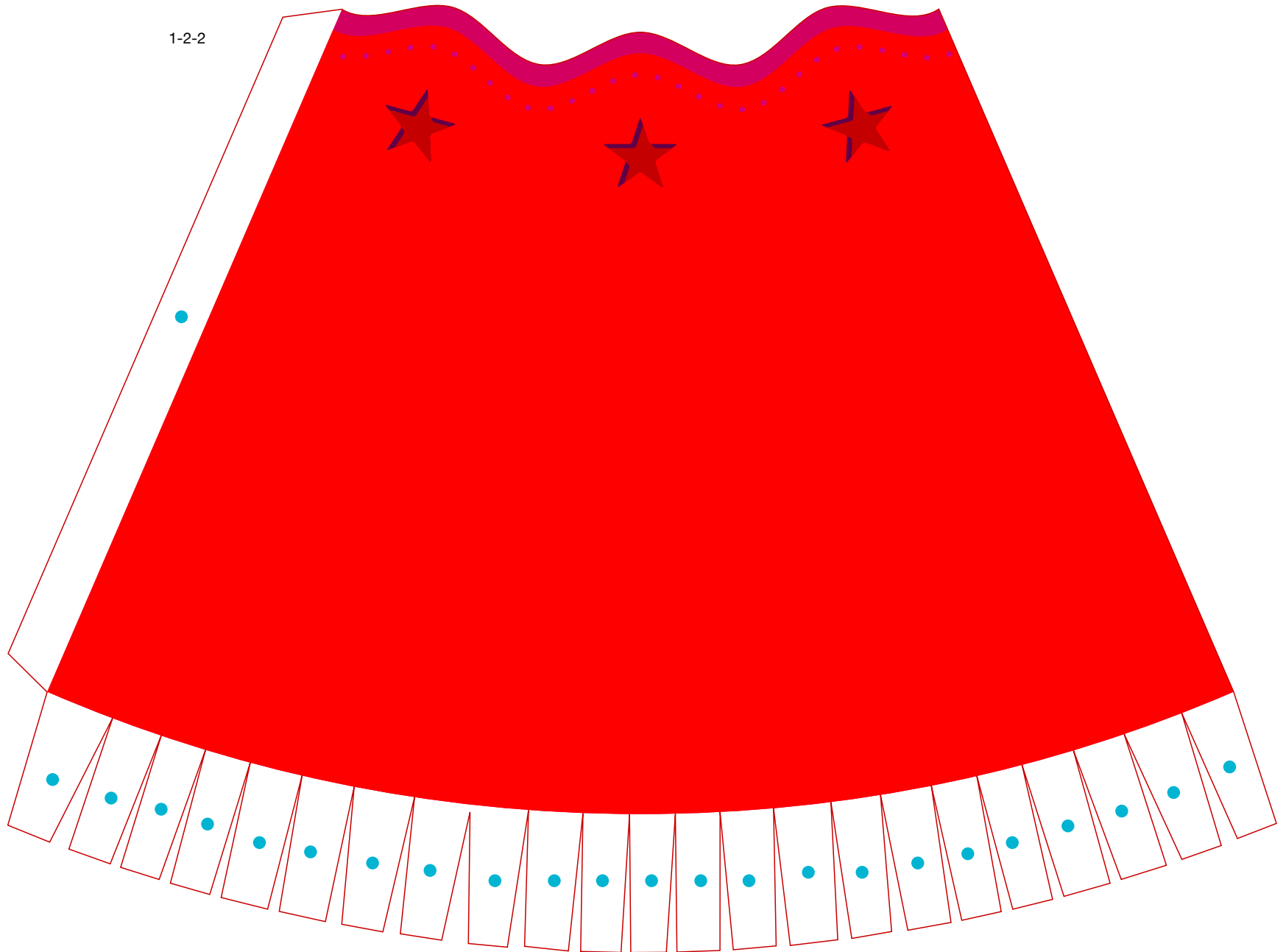
Santa's hat (Christmas, size L): Pattern

© Canon Inc. © Takako Takahashi



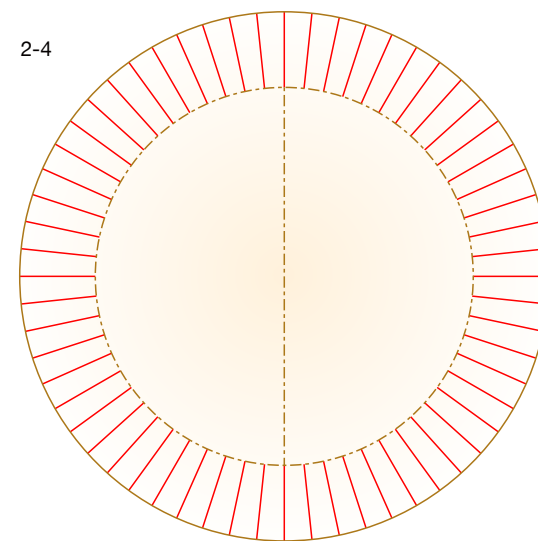
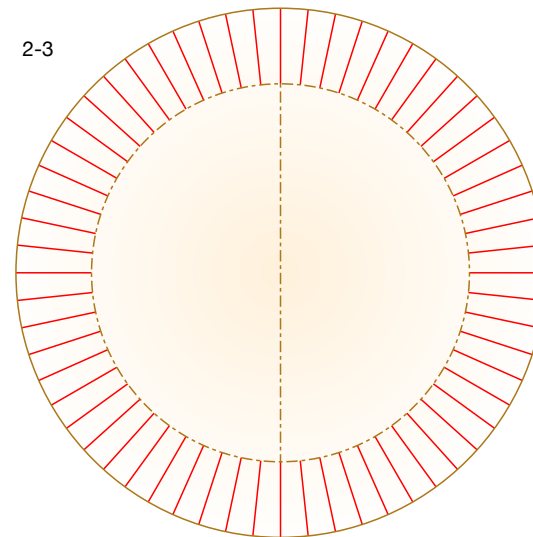
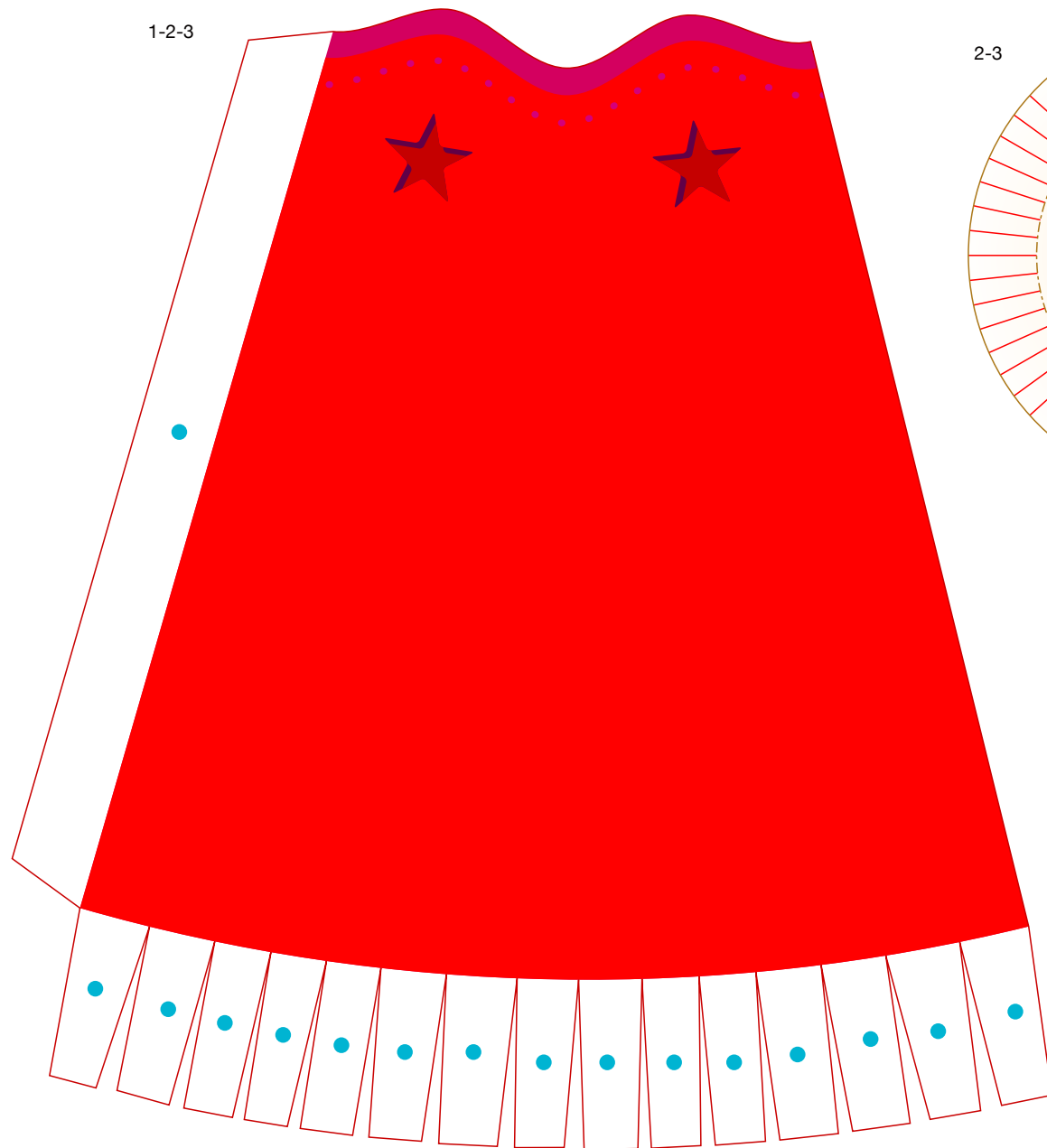
Santa's hat (Christmas, size L): Pattern

© Canon Inc. © Takako Takahashi



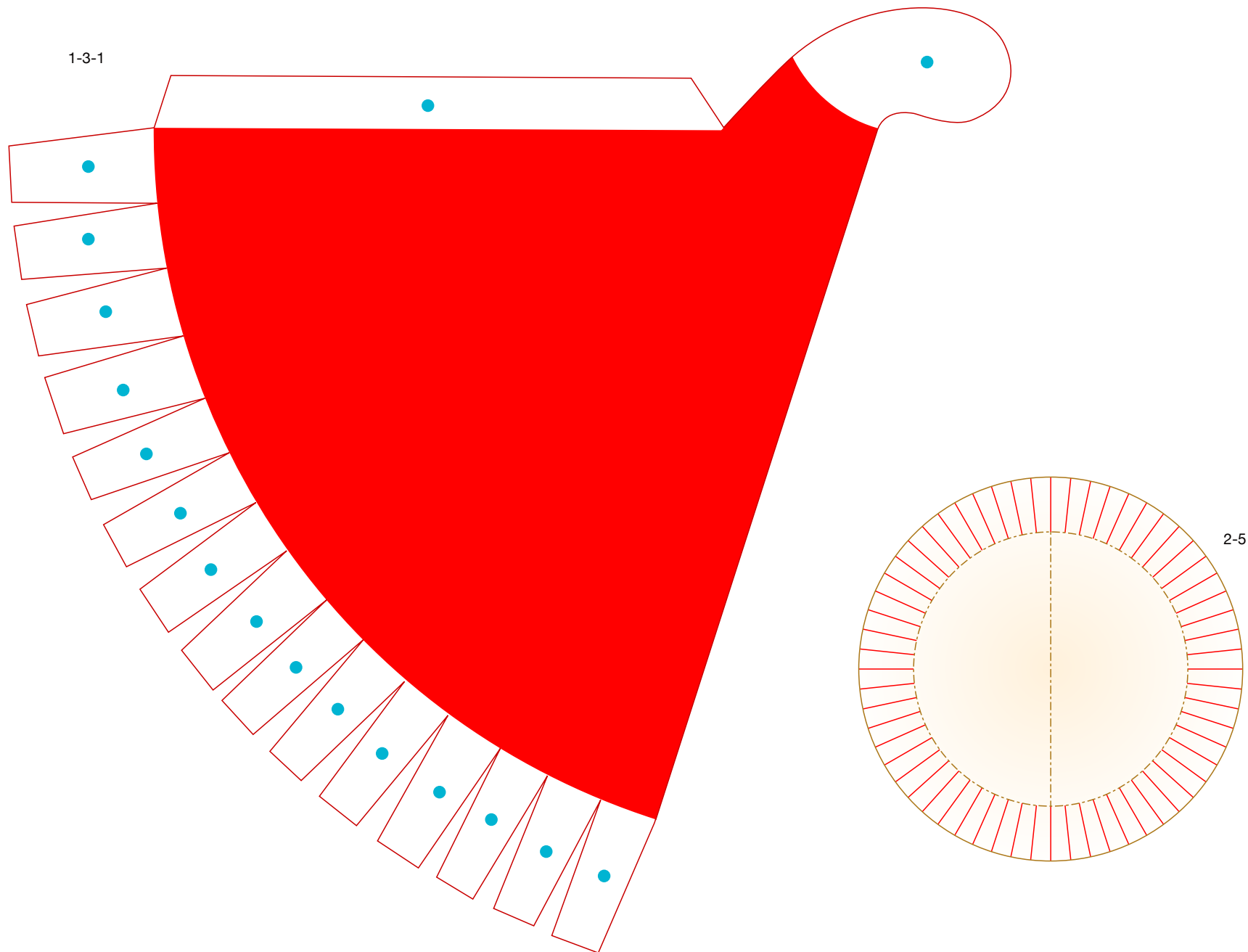
Santa's hat (Christmas, size L): Pattern

© Canon Inc. © Takako Takahashi



Santa's hat (Christmas, size L): Pattern

© Canon Inc. © Takako Takahashi

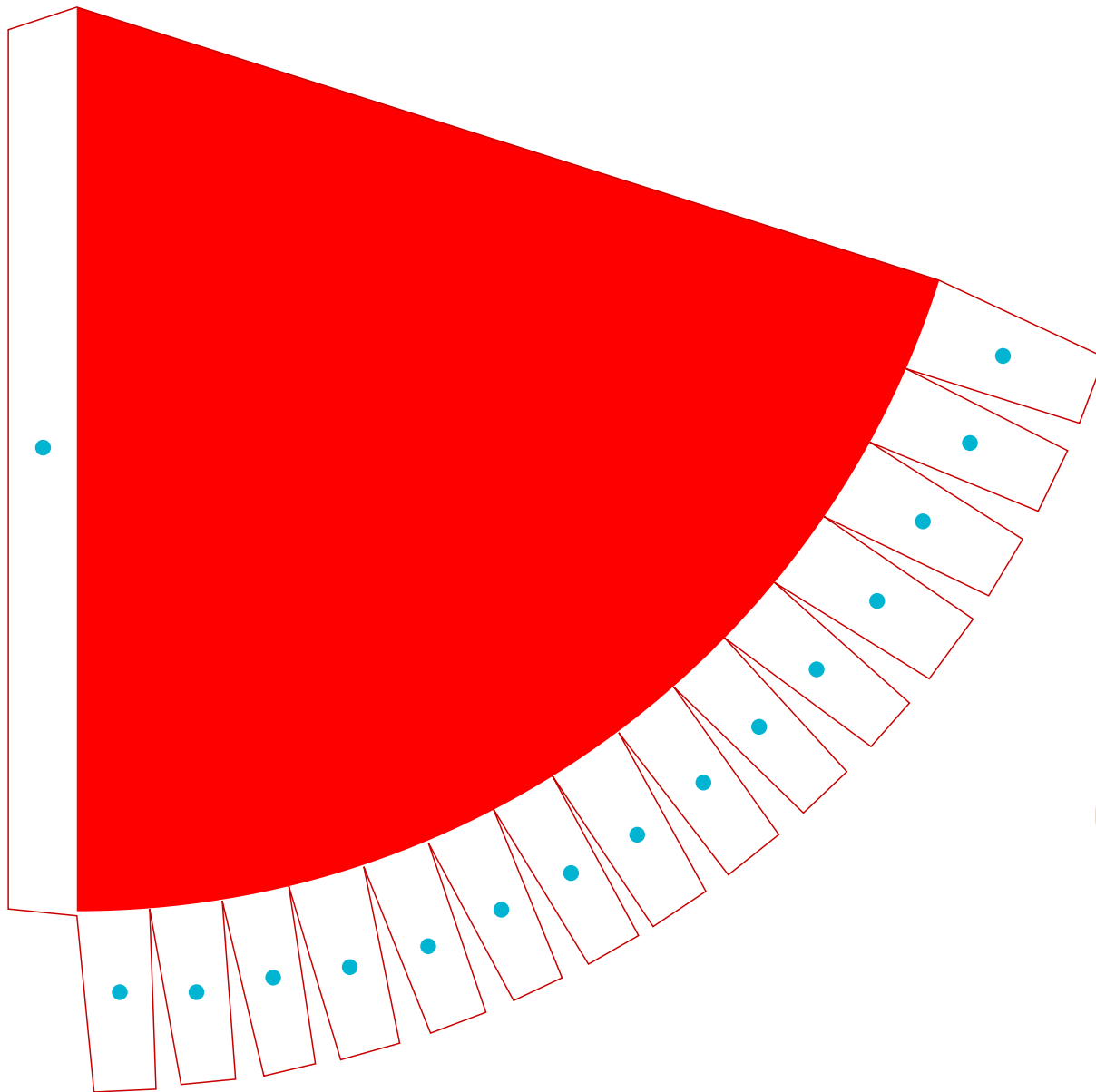


Santa's hat (Christmas, size L): Pattern

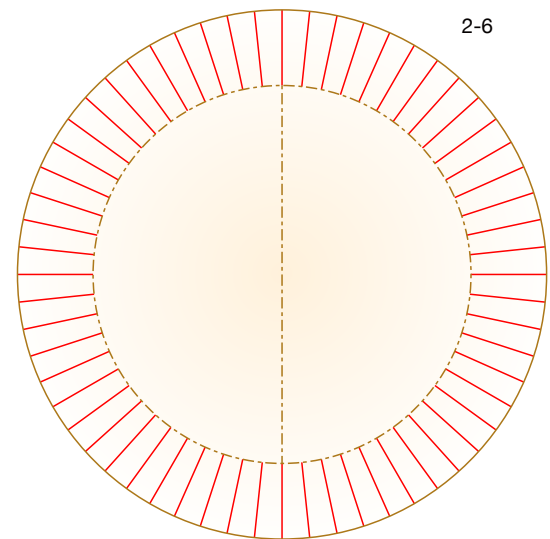
© Canon Inc. © Takako Takahashi



1-3-2



2-6

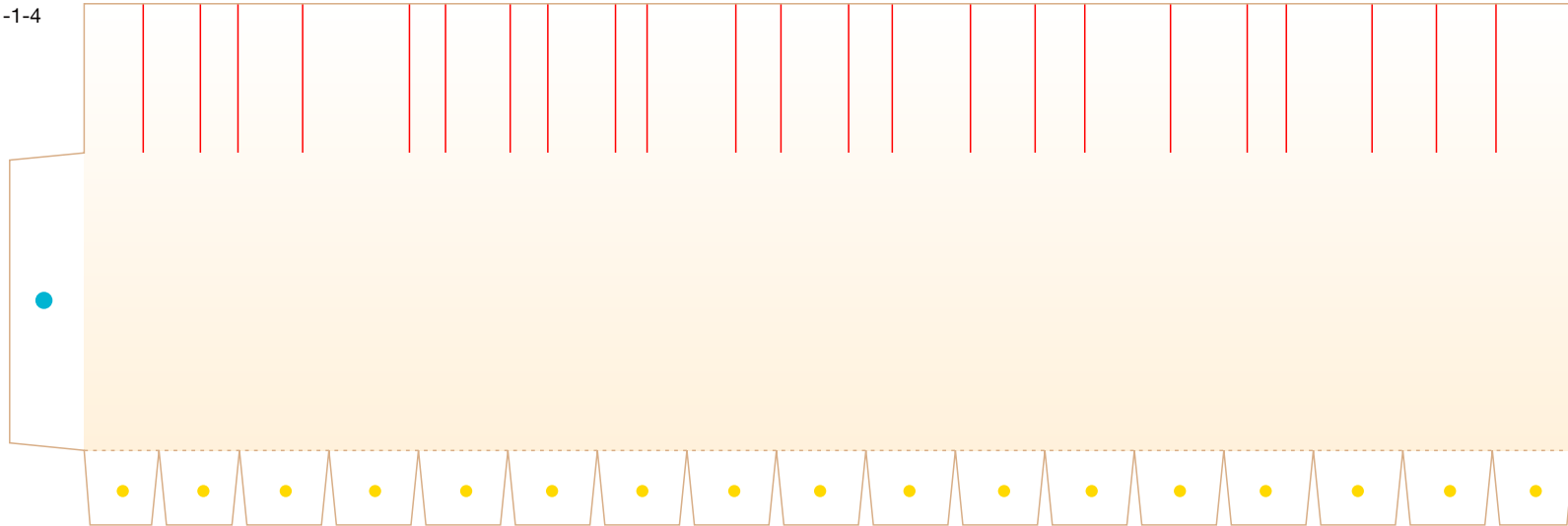


Santa's hat (Christmas, size L): Pattern

© Canon Inc. © Takako Takahashi

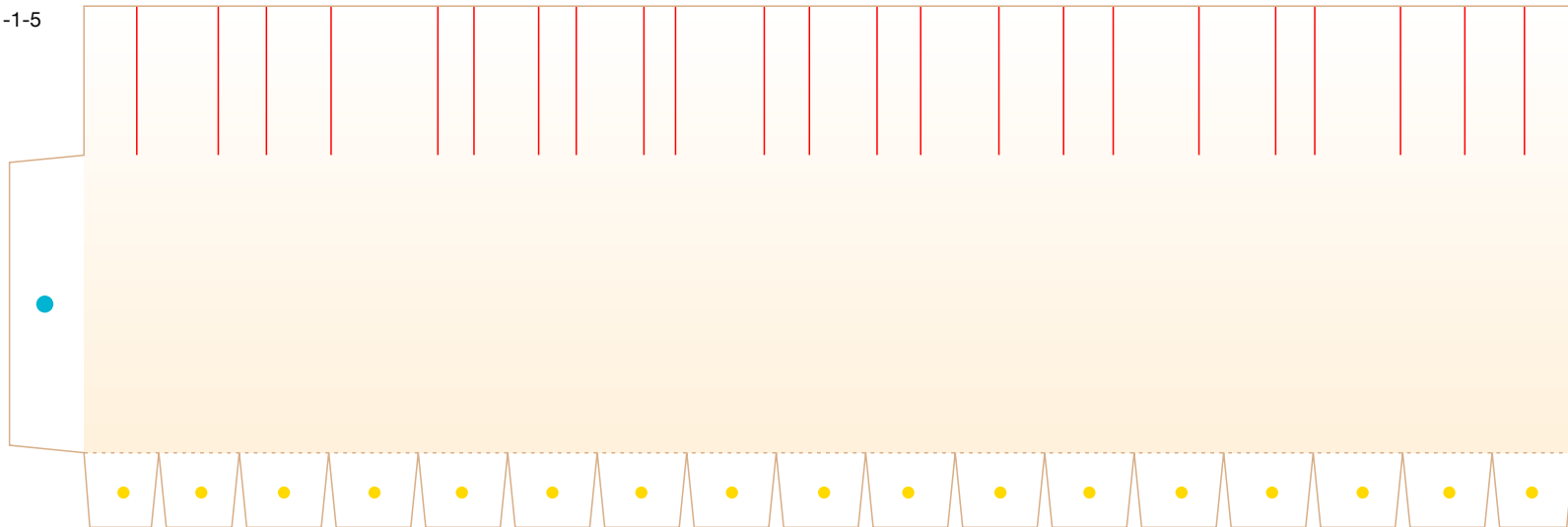


1-1-4



● Glue the reverse side to the inside of part 1.

1-1-5

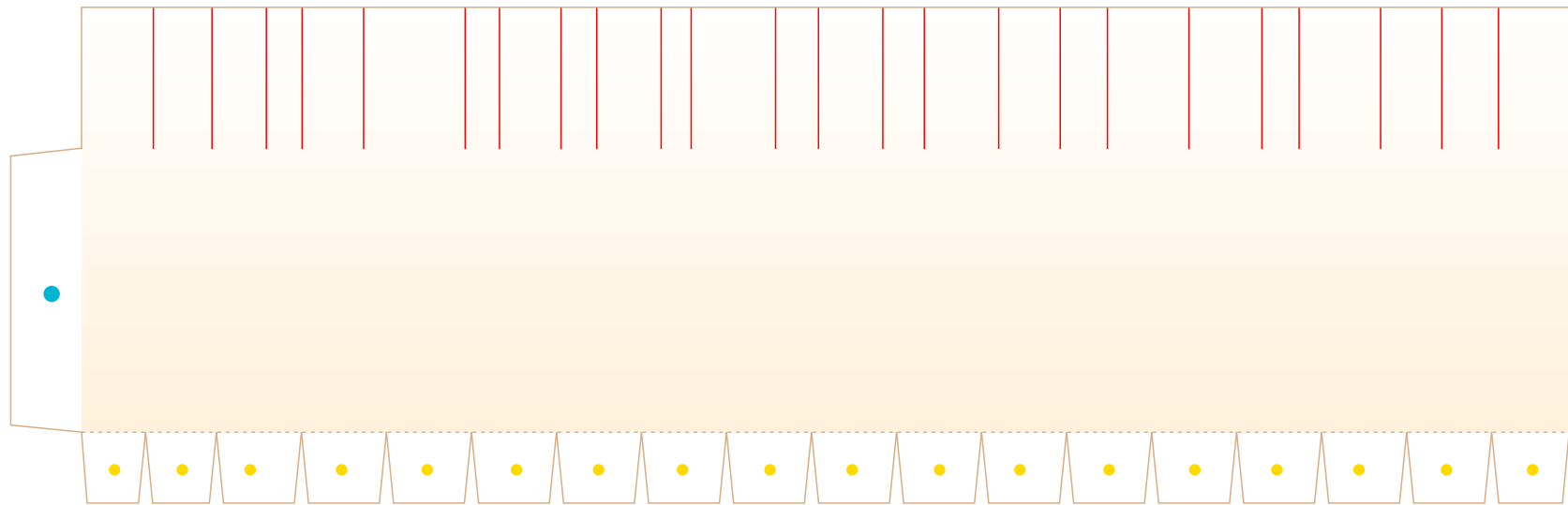


Santa's hat (Christmas, size L): Pattern

© Canon Inc. © Takako Takahashi



1-1-6



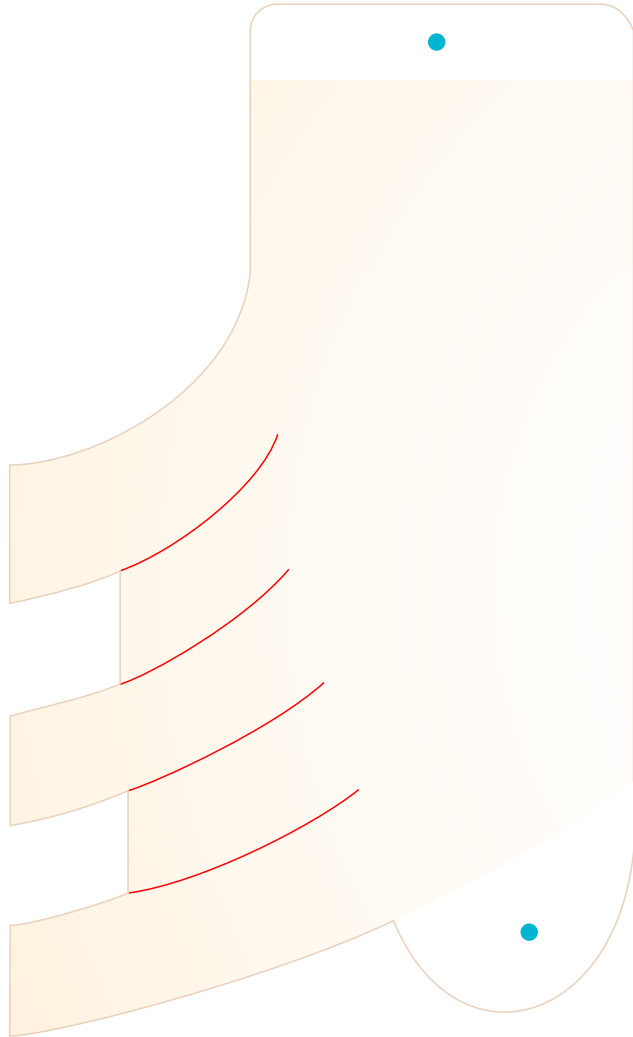
● Glue the reverse side to the inside of part 1.

Santa's hat (Christmas, size L): Pattern

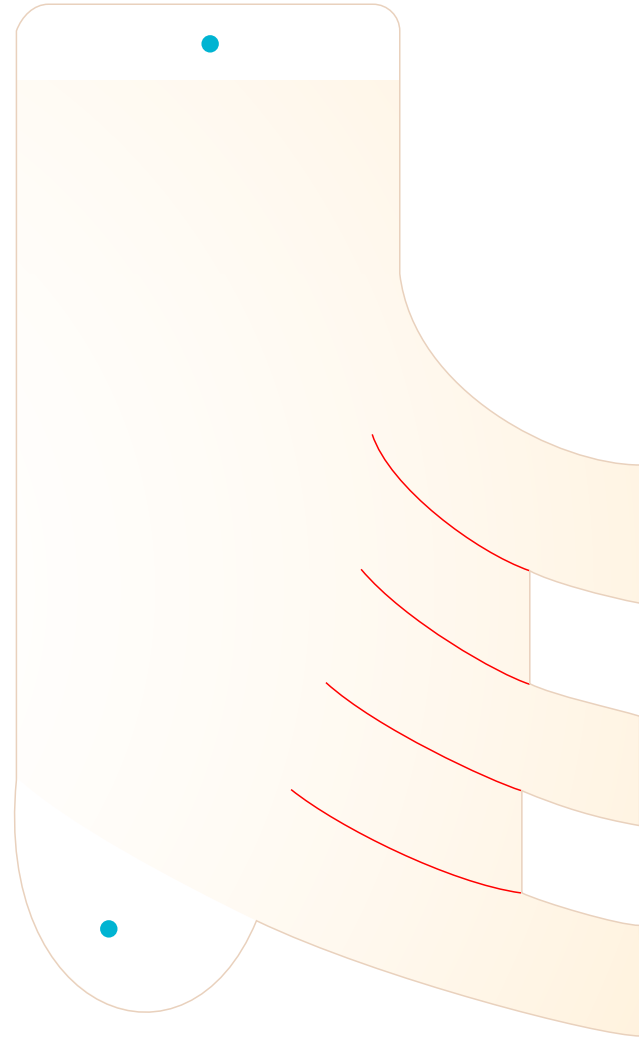
© Canon Inc. © Takako Takahashi



3-1-1

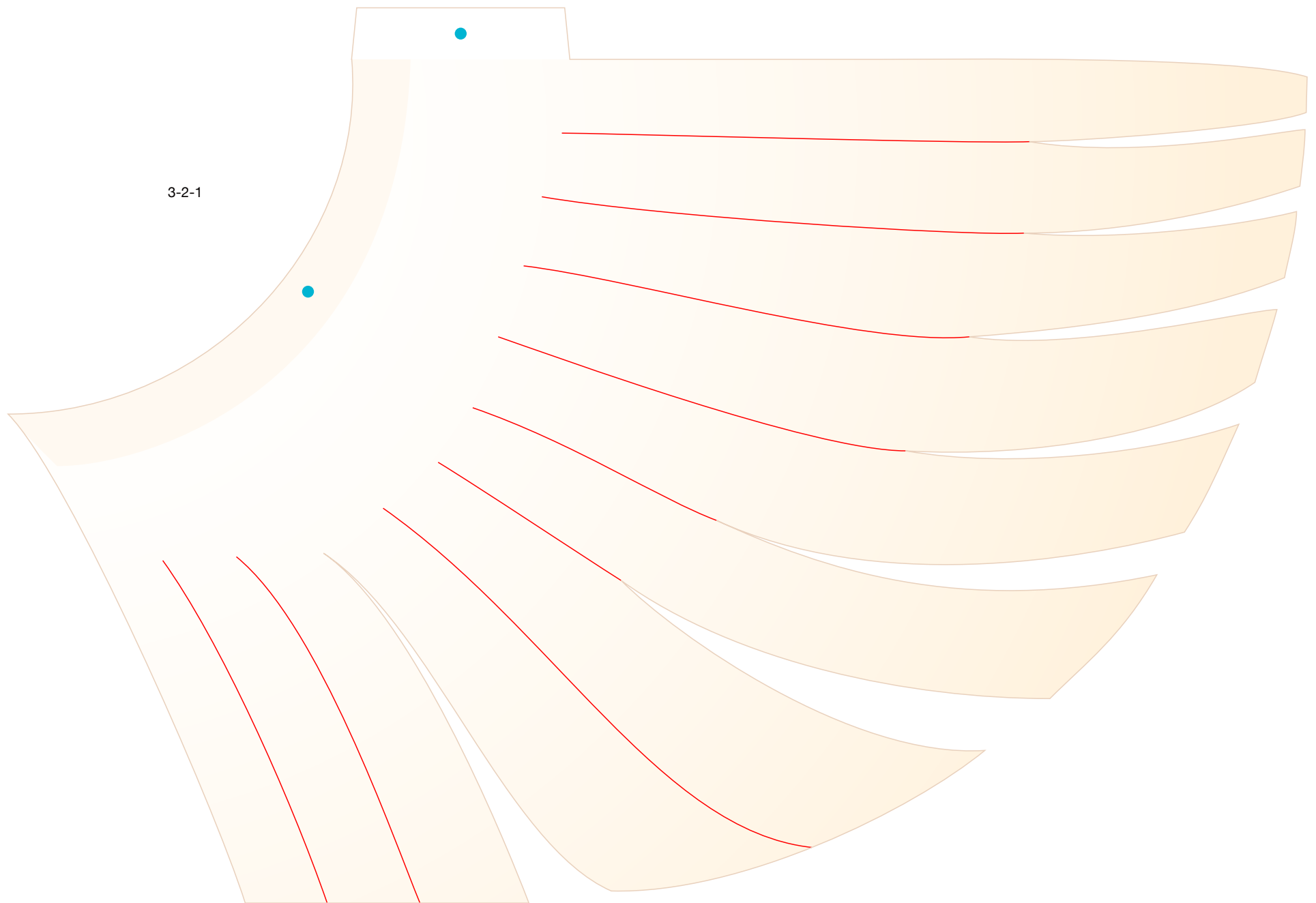


3-1-2



Santa's hat (Christmas, size L): Pattern

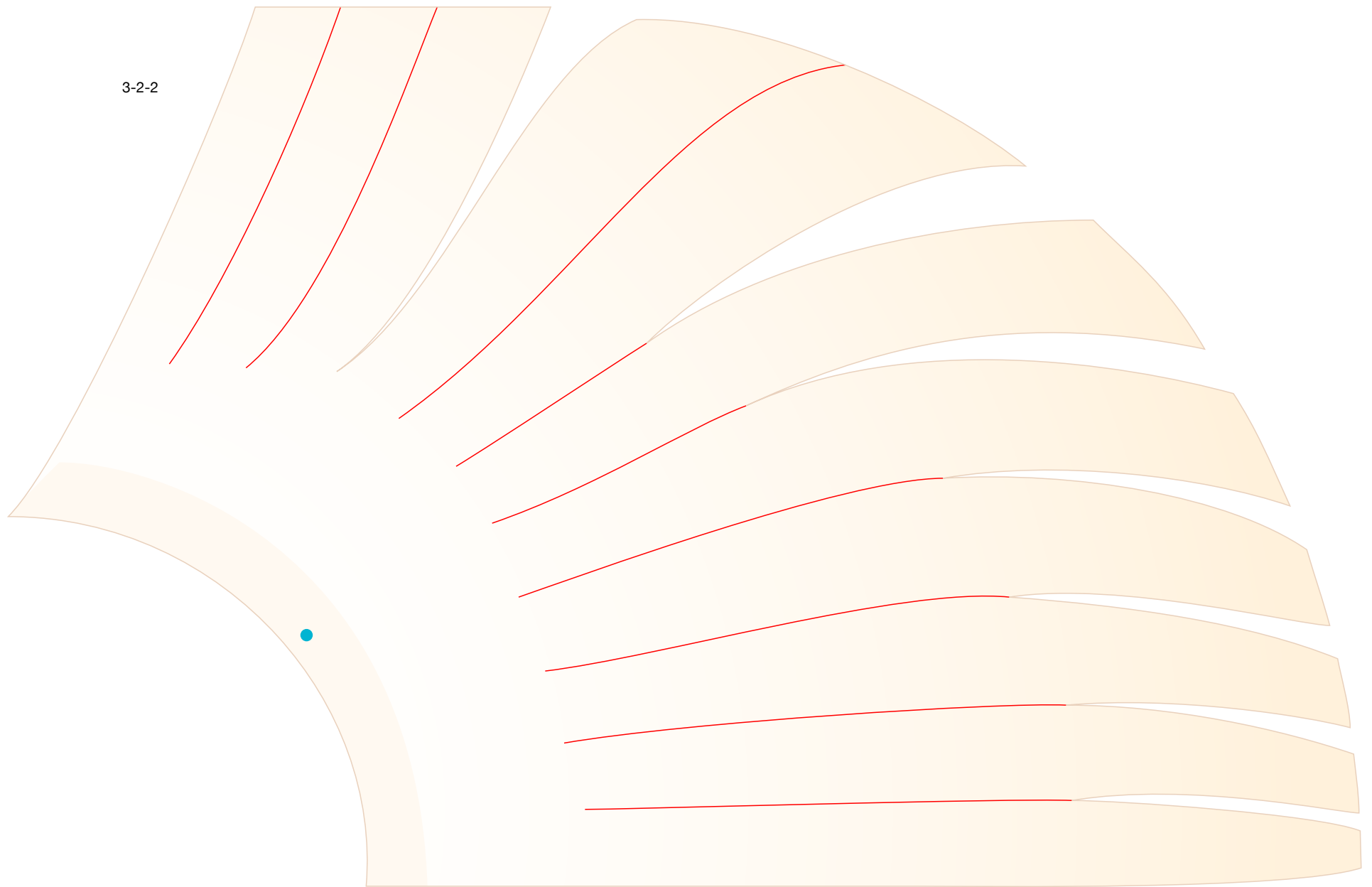
© Canon Inc. © Takako Takahashi



3-2-1

Santa's hat (Christmas, size L): Pattern

© Canon Inc. © Takako Takahashi

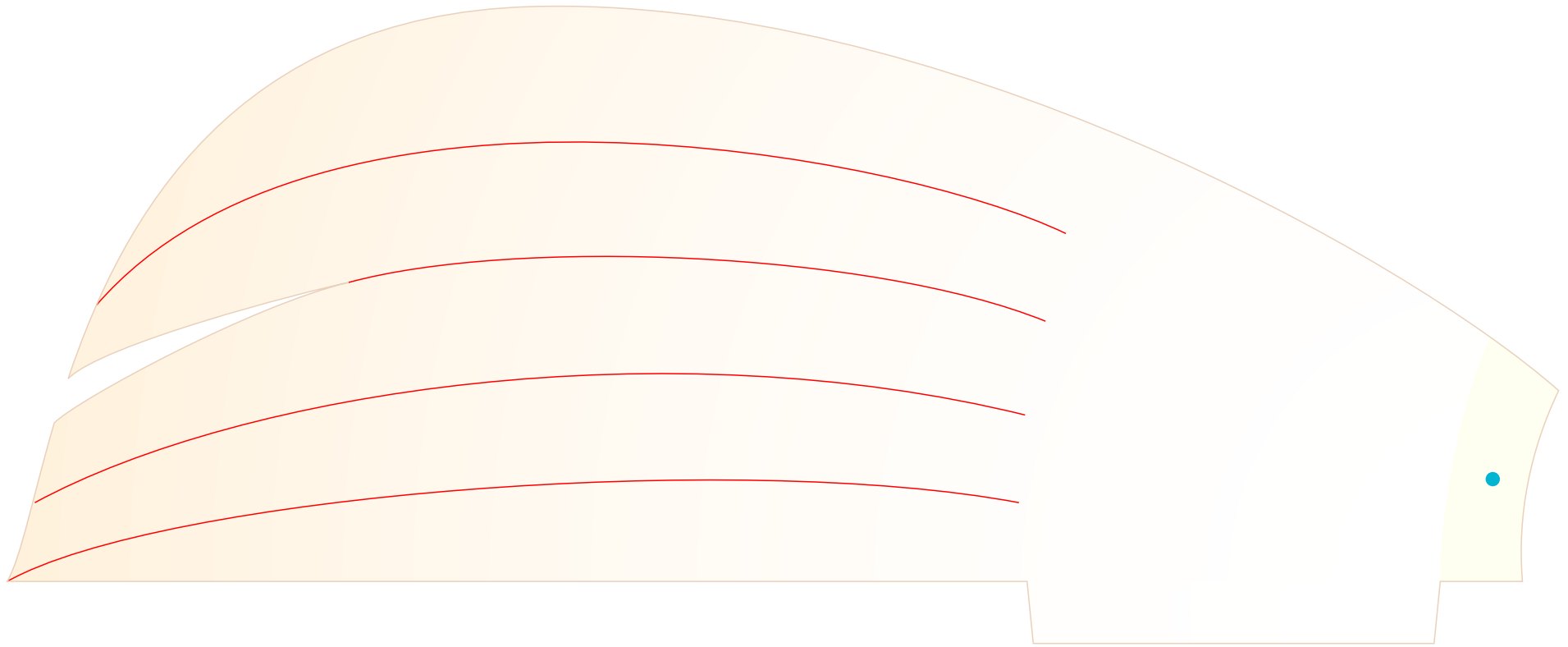


Santa's hat (Christmas, size L): Pattern

© Canon Inc. © Takako Takahashi



3-3-1

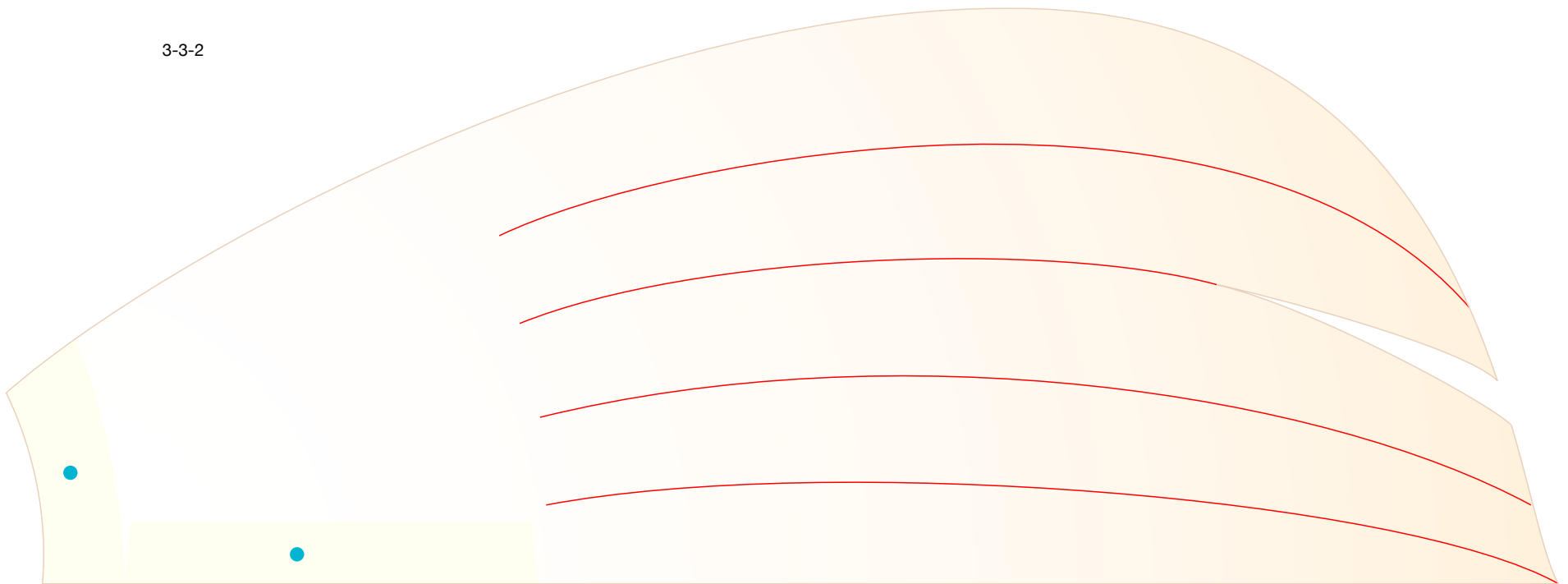


Santa's hat (Christmas, size L): Pattern

© Canon Inc. © Takako Takahashi

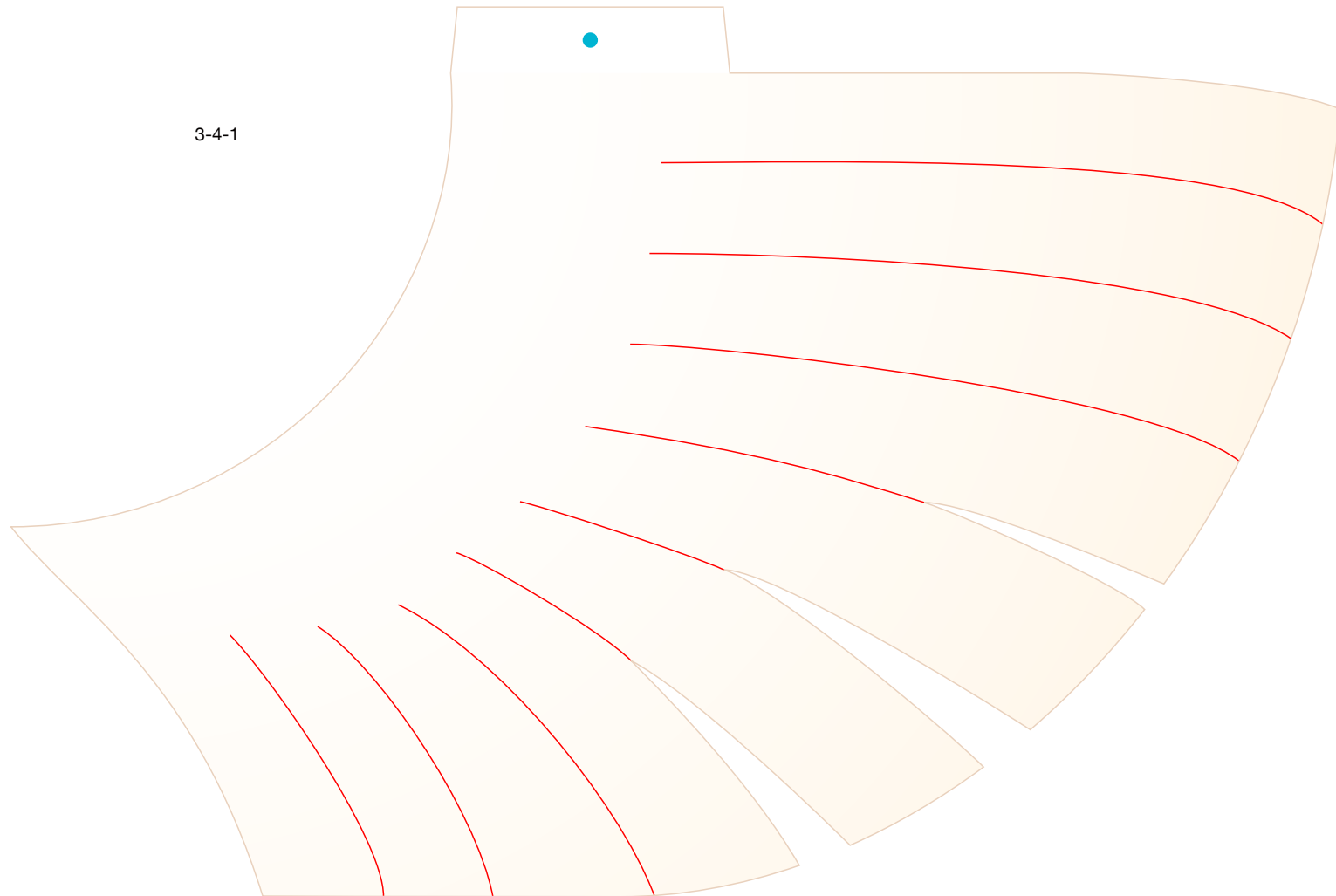


3-3-2

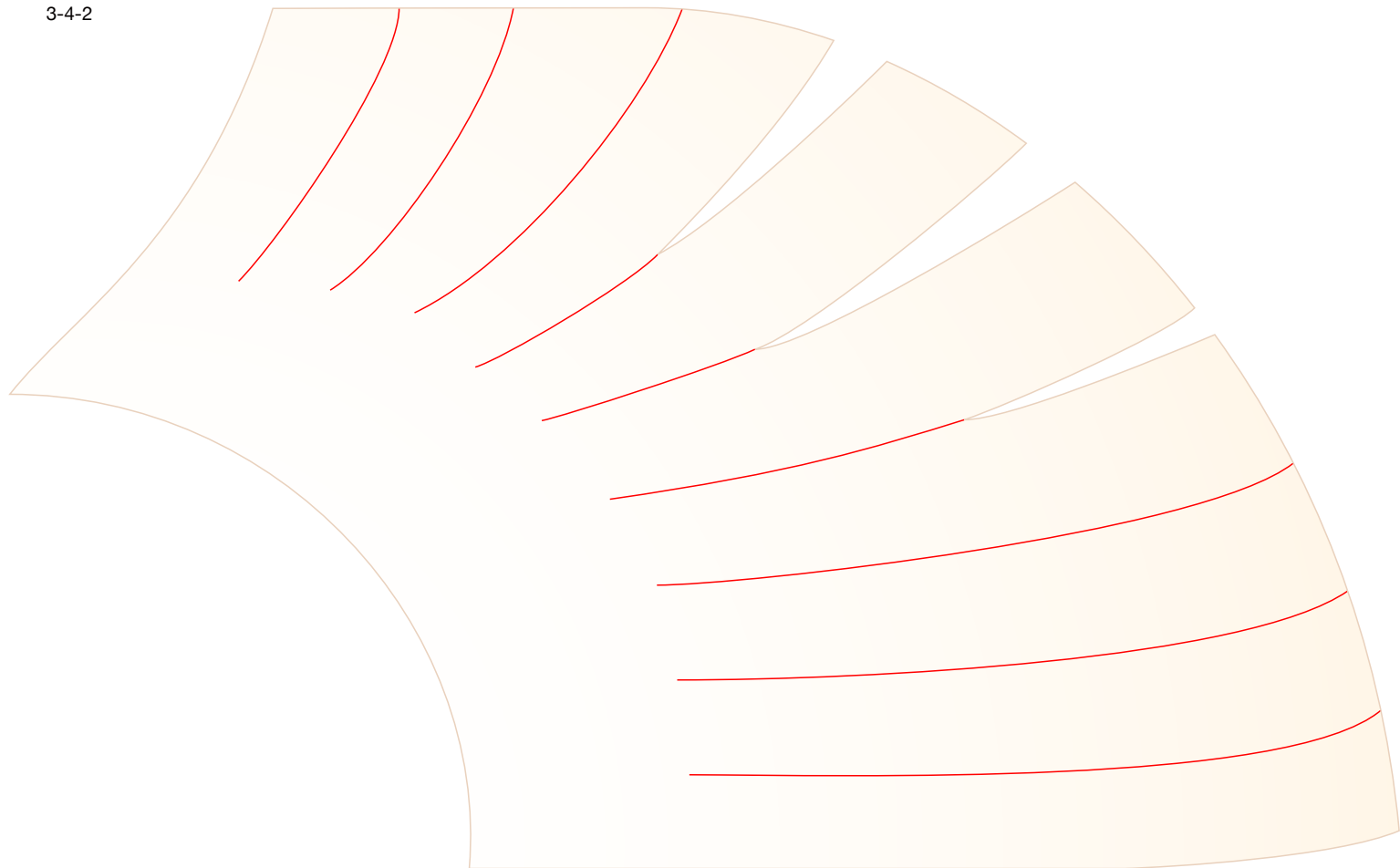


Santa's hat (Christmas, size L): Pattern

© Canon Inc. © Takako Takahashi



3-4-2



Santa's hat (Christmas, size L): Pattern

© Canon Inc. © Takako Takahashi

