

Christmas-tree ornaments (snowflake B): Assembly Instructions

© Canon Inc. © Takako Takahashi



PAPER CRAFT

<http://www.canon.com/c-park/en/>



View of completed model

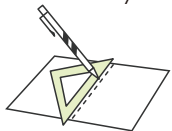
Christmas-tree ornaments (snowflake B)

The decorations hung on a Christmas tree are referred to as Christmas-tree ornaments. The wide range of popular ornaments includes the star attached to the top of the tree (representing the star said to have served as notice of Christ's birth), angels, candy canes, candles, lace, Santa Claus figurines, snowmen, and more. Use this kit to build snowflakes that can be hung the Christmas tree to brighten it up. It comes in five fun color variations.

■ Parts list (pattern): Five US letter sheets (No.3 to No.7)

■ No. of Parts: Four parts x 5 sets Total: 20

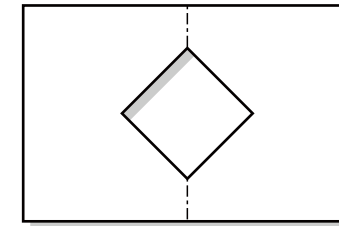
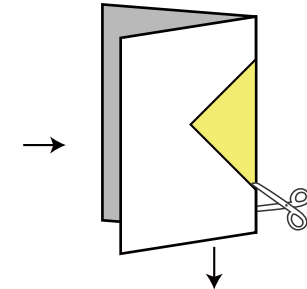
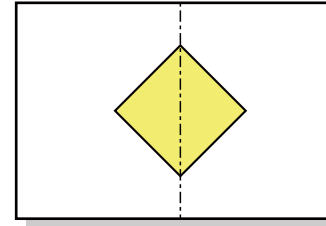
*Build the model by carefully reading the Assembly Instructions, in the parts sheet page order.



*Hint: Trace along the folds with a ruler and an exhausted pen (no ink) to get a sharper, easier fold.

Before starting assembly: Writing the number of each section on its back side before cutting out the sections is highly recommended.
(* This way, you can be sure which section is which even after cutting out the sections.)

→ Indicates where sections should be glued together.



Whether the parts ultimately need to be folded into "A" or "V" shapes, fold all the parts you'll need to cut out into an "A" shape before cutting them out. After cutting out all the parts, fold them into "A" or "V" shapes, as designated to adjust the shape.

Assembly Instructions



Mountain fold(dotted line)

Make a mountain fold.

Valley fold(dashed and dotted line)

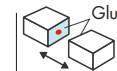
Make a valley fold.

Scissors line(solid line)

Cut along the line.

Cut in line(solid line)

Cut along the line.



The glue spot(colored dot) shows where to apply the glue.

Glue spot(Red dot)

Glue parts with the same number together.

Glue spot(Green dot)

Glue within the same part.

Glue spot(Blue dot)

Glue to the rear of the other part.

Tools and materials



Scissors, set square, glue(We recommend stick glue), pencil, used ballpoint pen, toothpicks, tweezers, (useful for handling small parts)

Assembly tip



Before gluing, crease the paper along mountain fold and valley fold lines and make sure rounded sections are nice and stiff.

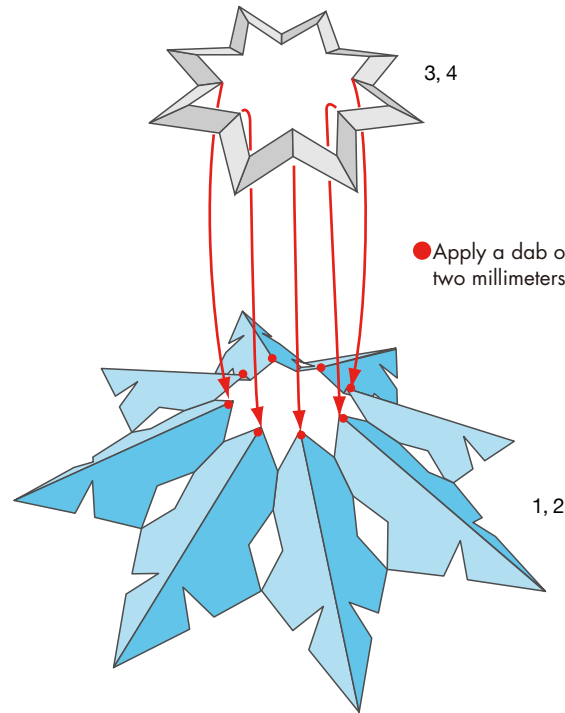
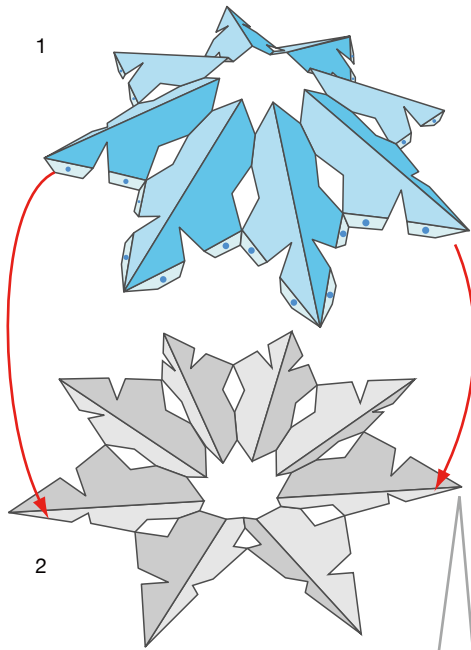
Caution



Glue, scissors and other tools may be dangerous to young children so be sure to keep them out of the reach of young children.

Christmas-tree ornaments (snowflake B): Assembly Instructions

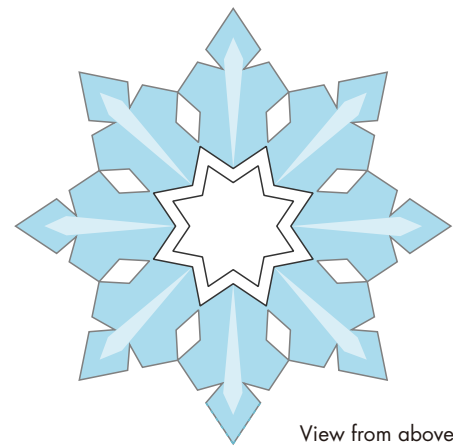
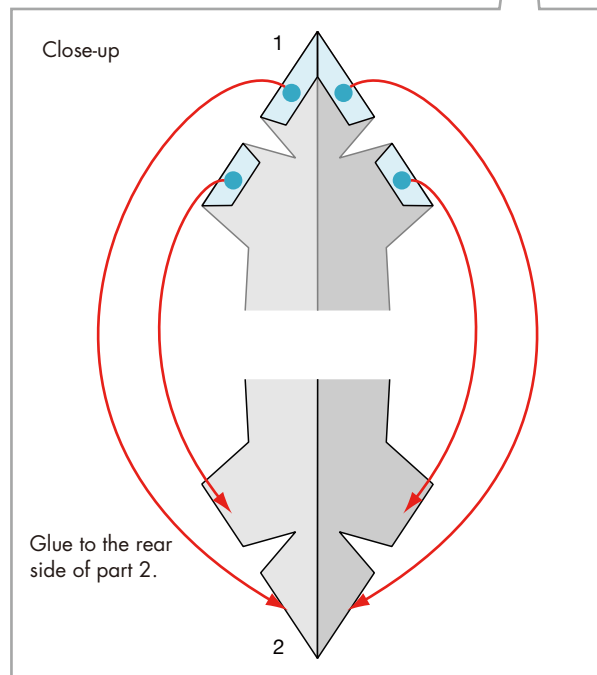
© Canon Inc. © Takako Takahashi



● Apply a dab of glue approximately two millimeters in diameter.

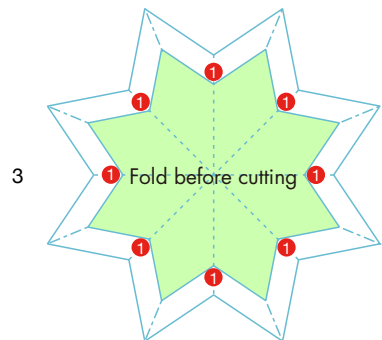
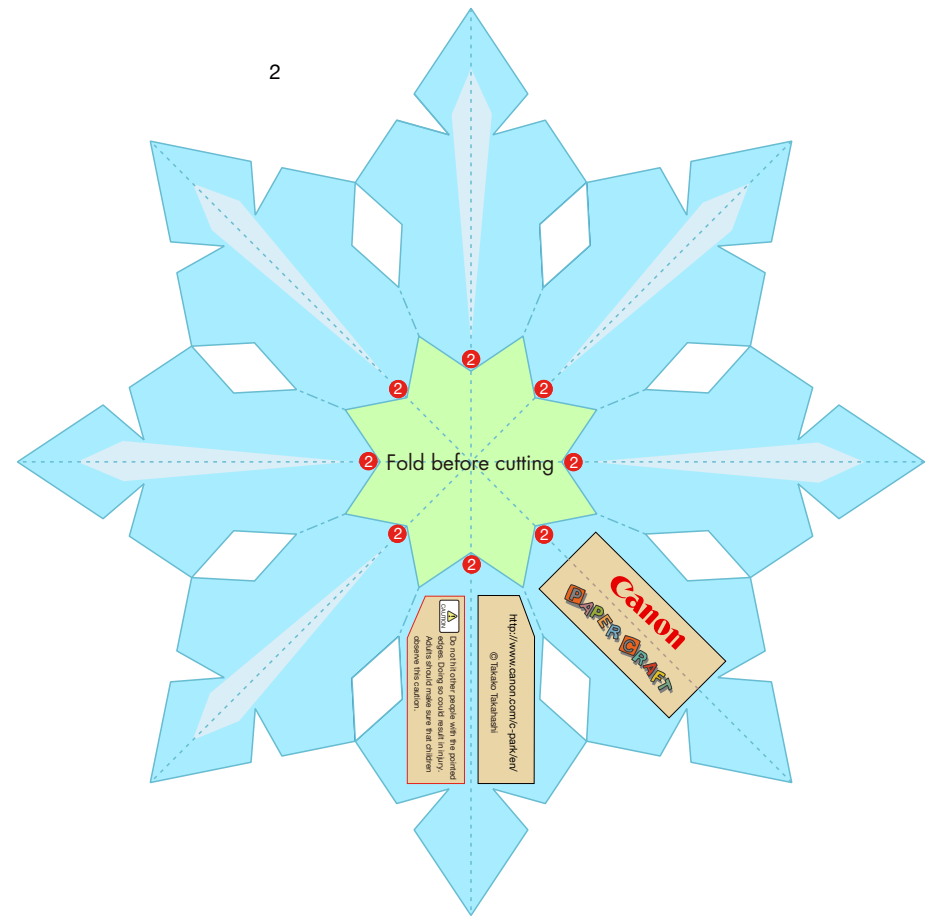
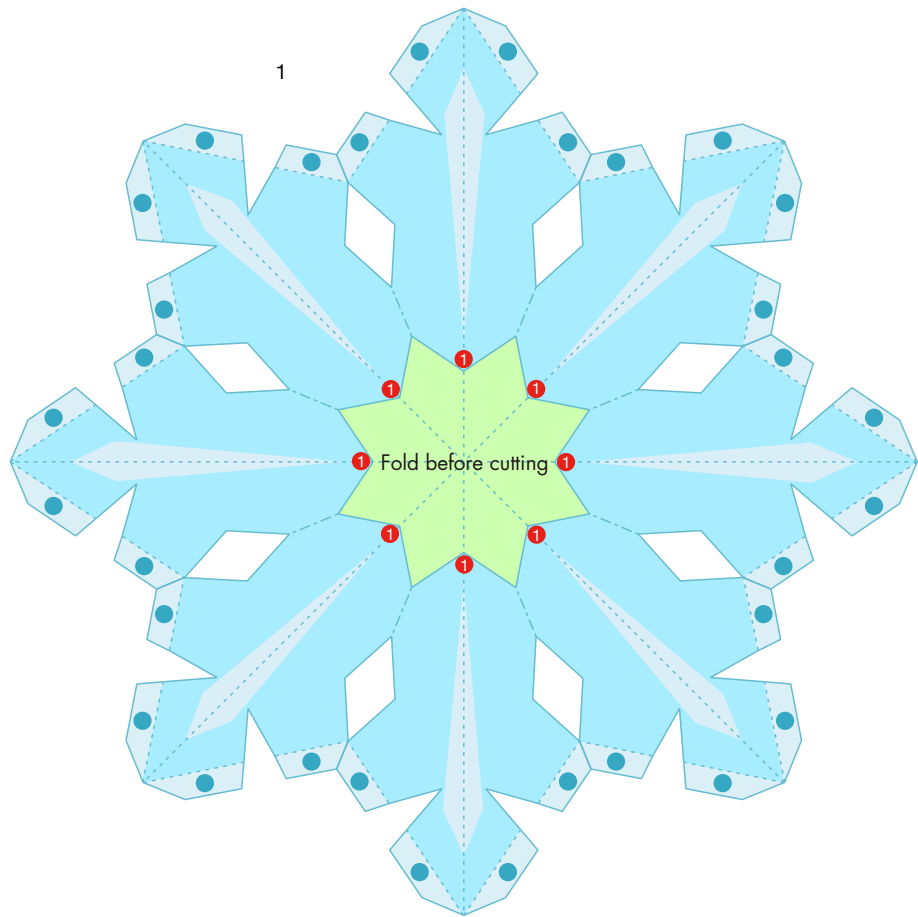


Attach a string of your choice to finish your ornament.

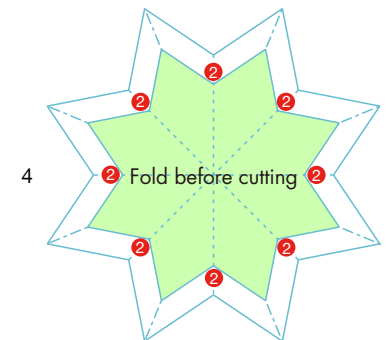


View from above

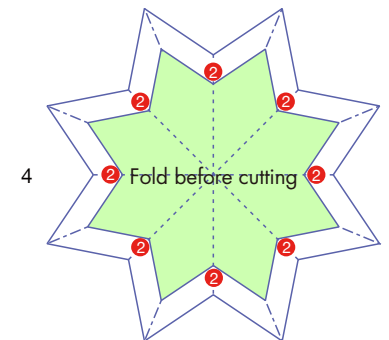
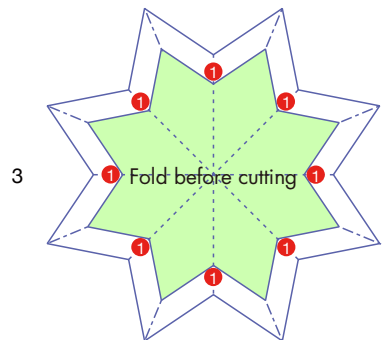
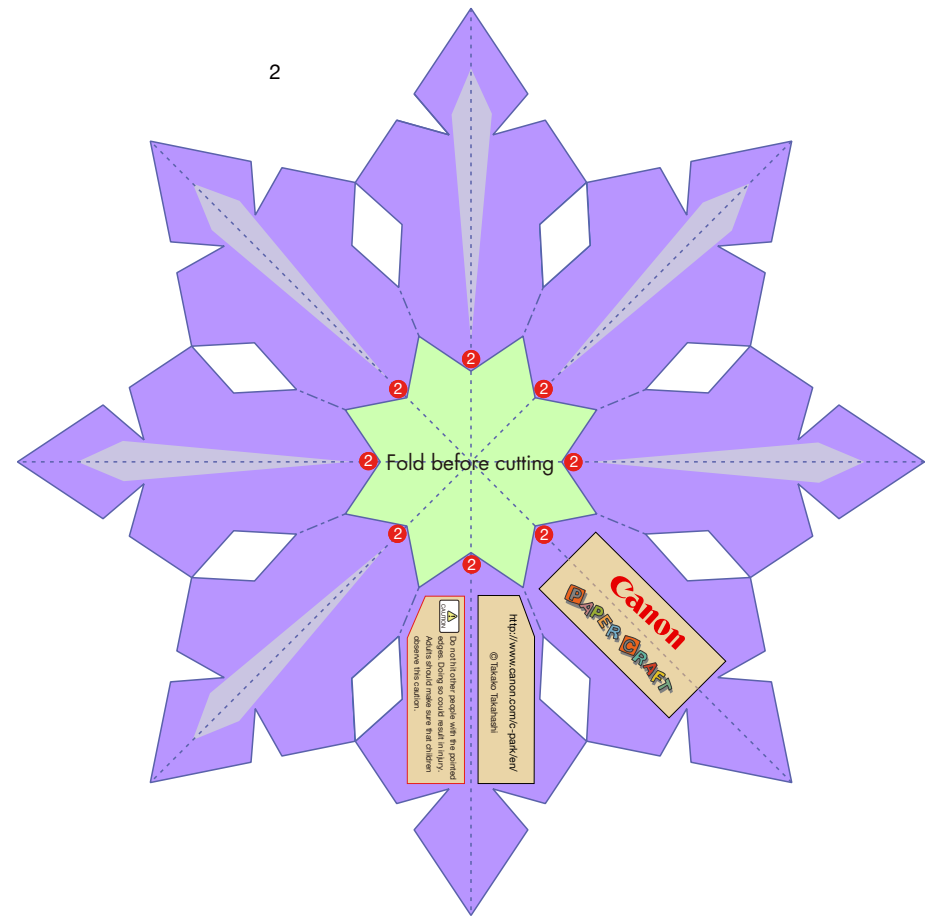
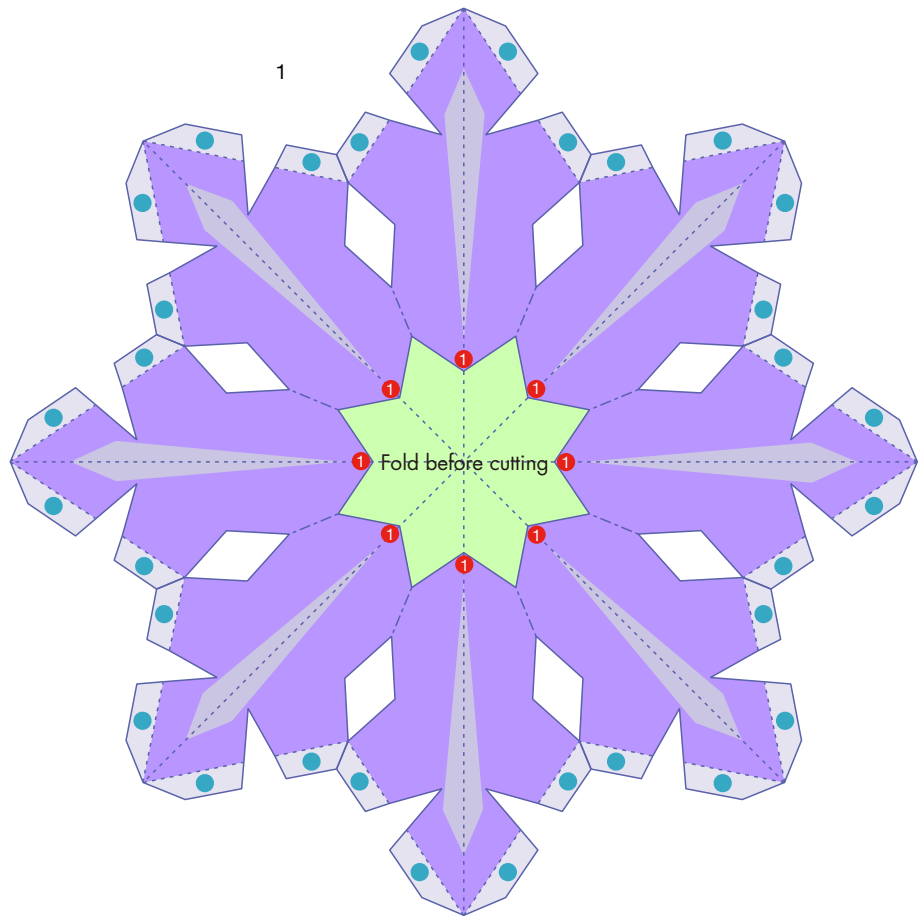
Christmas-tree ornaments (snowflake B): Pattern



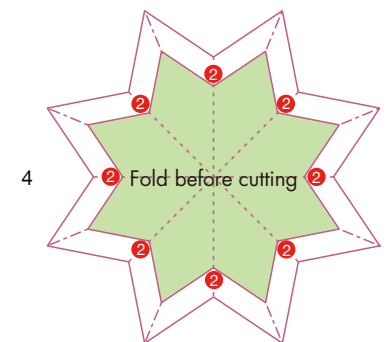
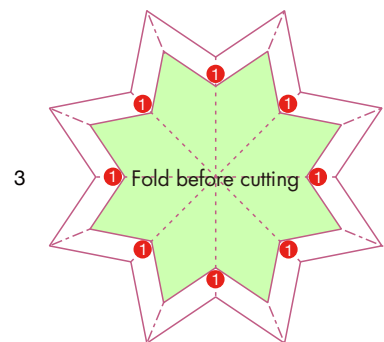
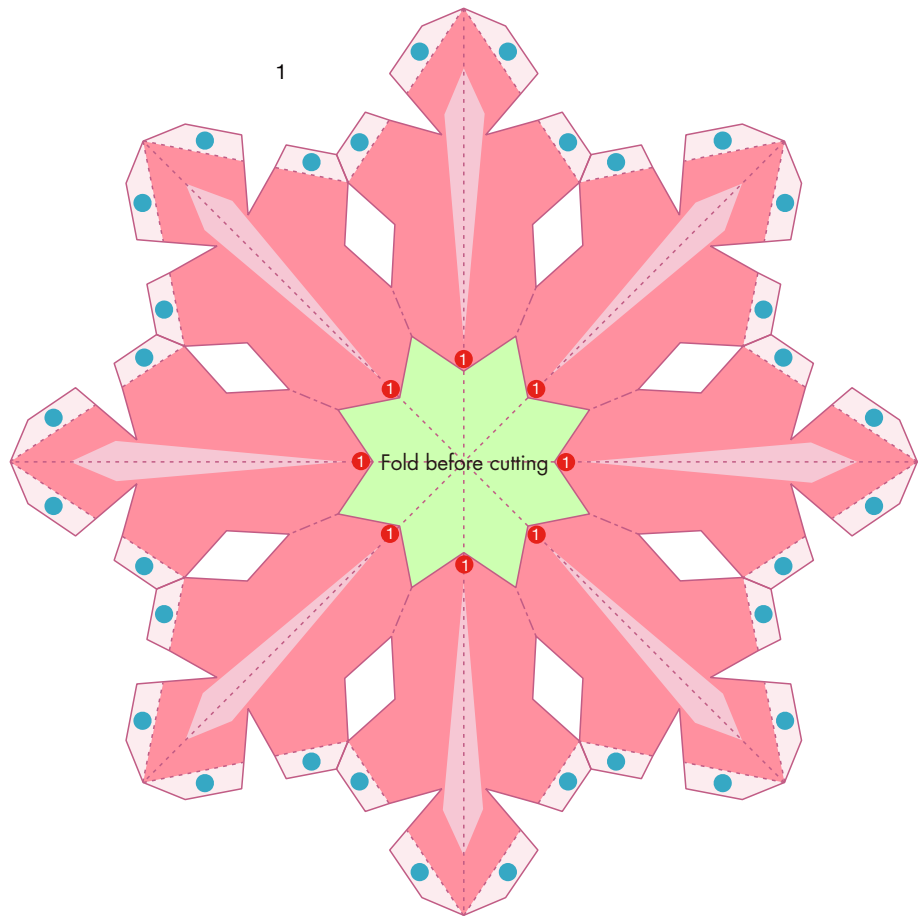
For the shaded cutting parts, whether the parts ultimately need to be folded into "A" or "V" shapes, fold all the parts you'll need to cut out into an "A" shape before cutting them out. After cutting out all the parts, fold them into "A" or "V" shapes, as designated to adjust the shape.

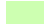


Christmas-tree ornaments (snowflake B): Pattern



For the shaded cutting parts, whether the parts ultimately need to be folded into "A" or "V" shapes, fold all the parts you'll need to cut out into an "A" shape before cutting them out. After cutting out all the parts, fold them into "A" or "V" shapes, as designated to adjust the shape.

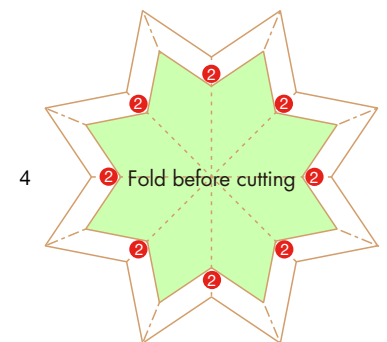
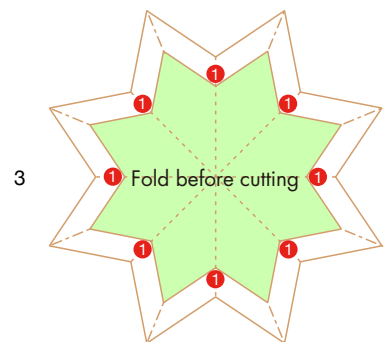
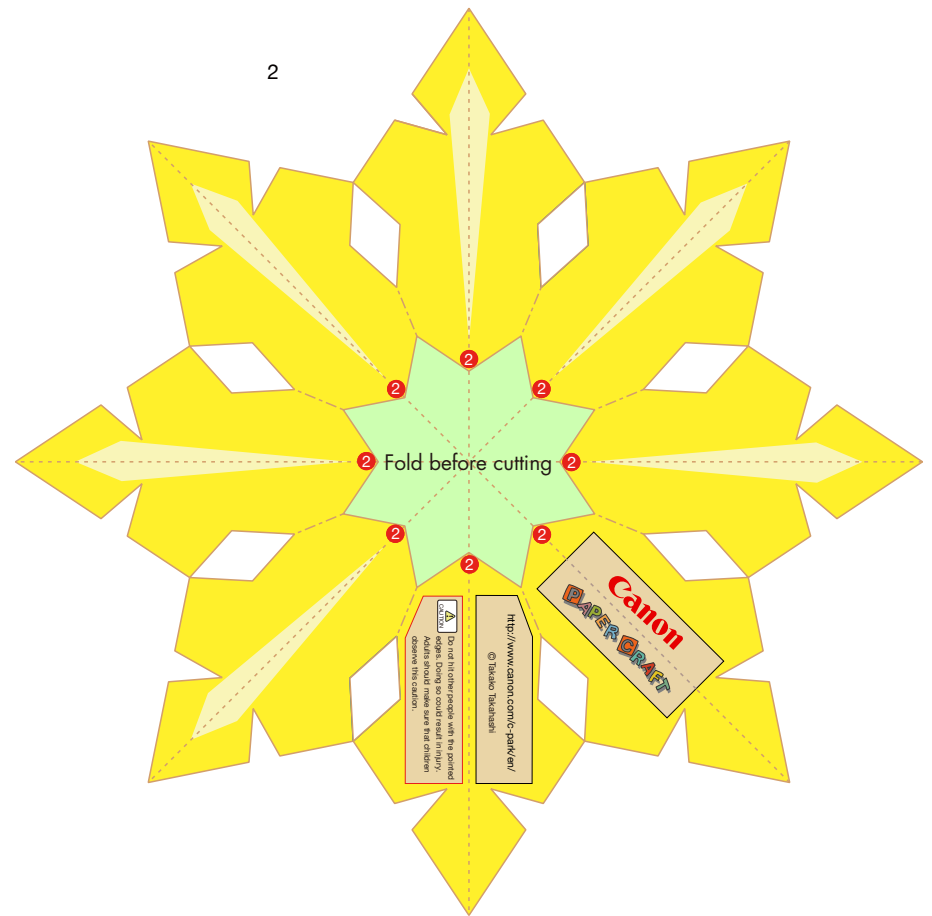
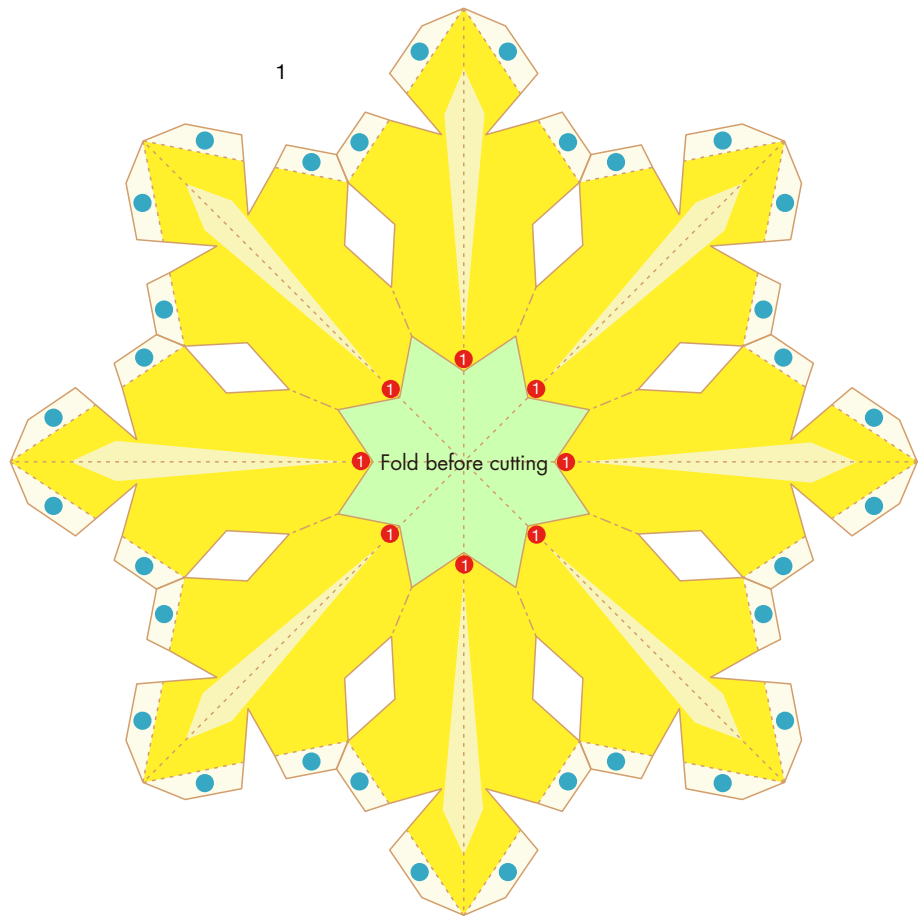


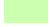
 For the shaded cutting parts, whether the parts ultimately need to be folded into "A" or "V" shapes, fold all the parts you'll need to cut out into an "A" shape before cutting them out. After cutting out all the parts, fold them into "A" or "V" shapes, as designated to adjust the shape.

3

4

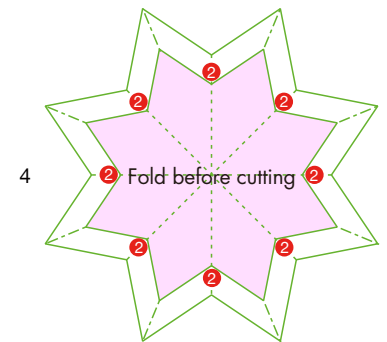
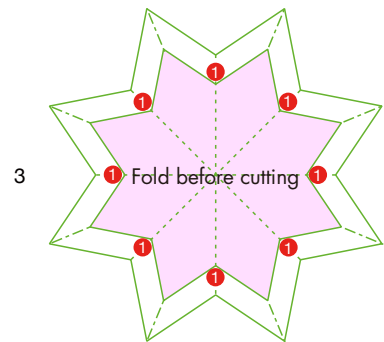
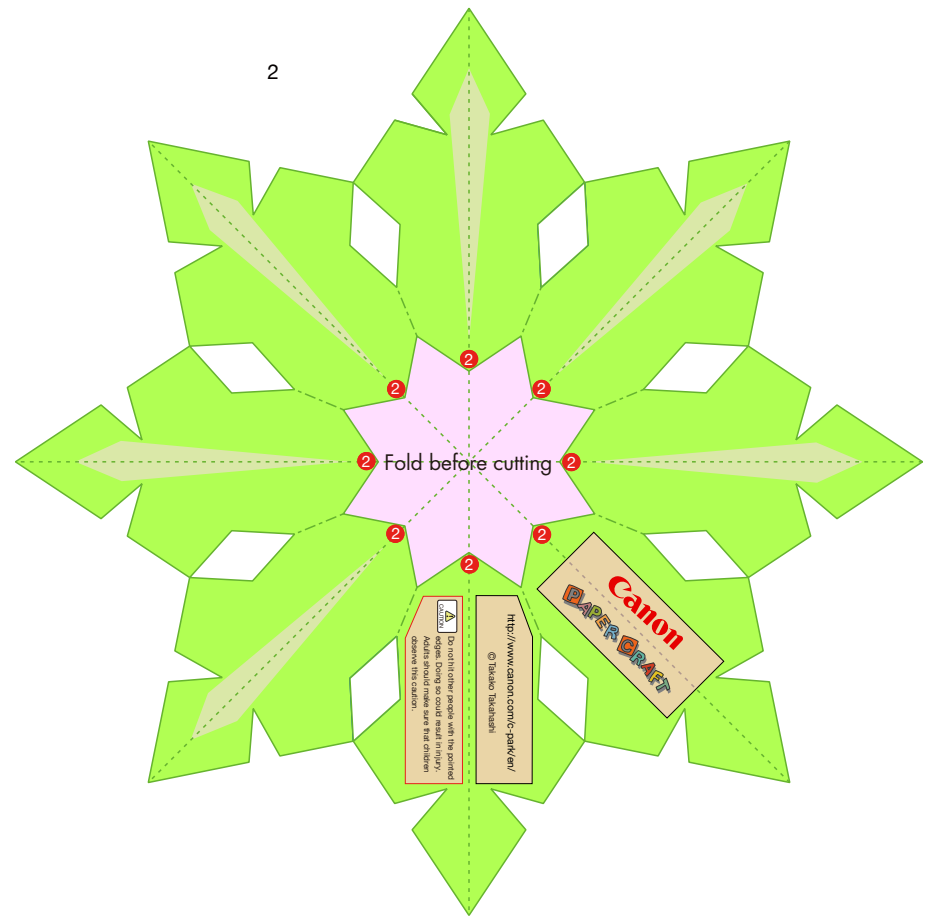
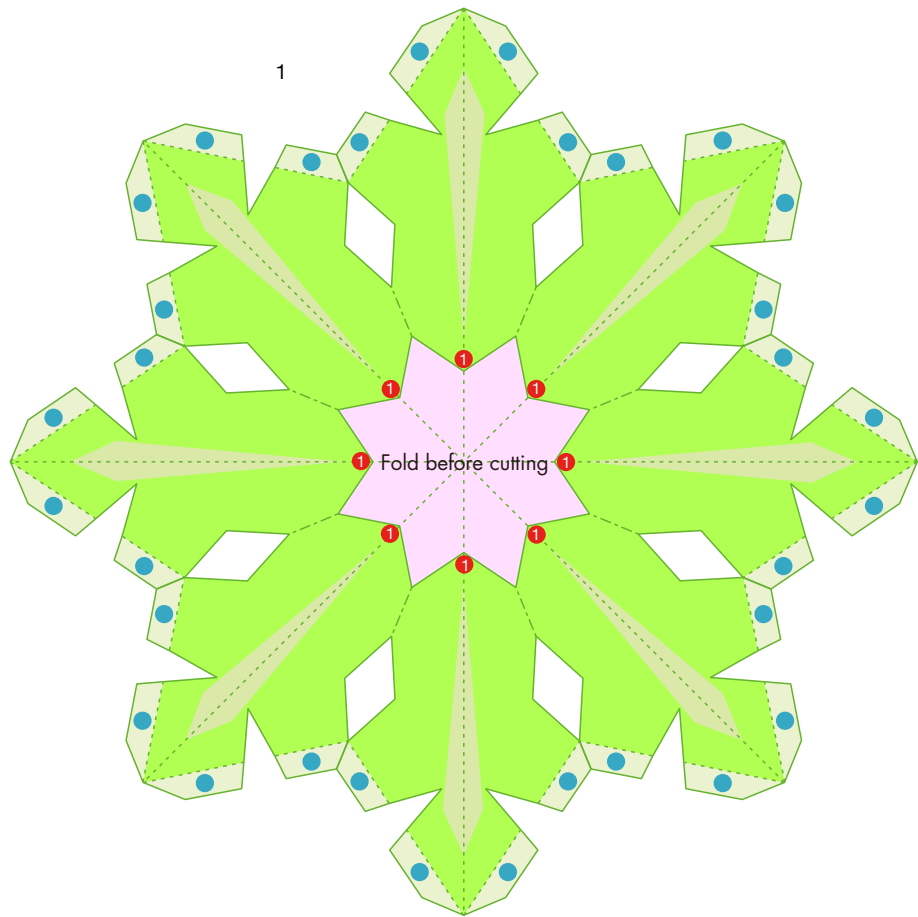
Christmas-tree ornaments (snowflake B): Pattern



 For the shaded cutting parts, whether the parts ultimately need to be folded into "A" or "V" shapes, fold all the parts you'll need to cut out into an "A" shape before cutting them out. After cutting out all the parts, fold them into "A" or "V" shapes, as designated to adjust the shape.

Do not hit other people with the pointed ends of the paper. Adults should make sure that children observe this caution.
<http://www.canon.com/c-park/ev/>
 © Takako Takahashi

Christmas-tree ornaments (snowflake B): Pattern



For the shaded cutting parts, whether the parts ultimately need to be folded into "A" or "V" shapes, fold all the parts you'll need to cut out into an "A" shape before cutting them out. After cutting out all the parts, fold them into "A" or "V" shapes, as designated to adjust the shape.