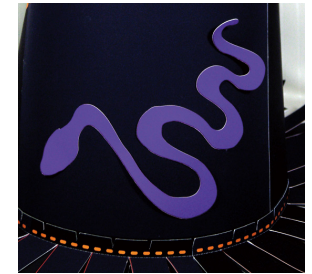
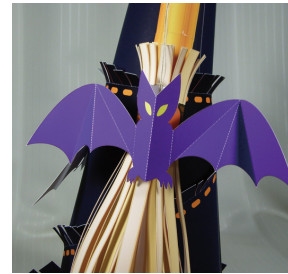
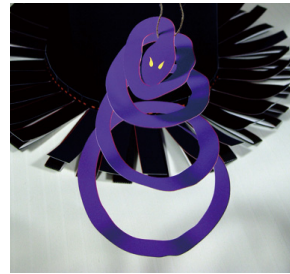


Witch's hat (size S) and broom (Halloween): Pattern

Canon ® is a registered trademark of Canon Inc. © Canon Inc.
© Takako Takahashi



<http://www.canon.com/c-park/en/>



Hat size: S (fits heads approximately 53centimeters in circumference)

Witch's hat and broom (Halloween)

Witches are women with magical powers who make frequent appearances in Western folk tales and other stories. In popular imagery, witches wear black pointed hats and black capes and fly through the sky on brooms. While witches are feared for their supposed abilities to harm people through magic and strange-looking potions concocted in giant cauldrons, tales also tell of good witches who lead people to good fortune. On Halloween, witches are said to scour the skies under cover of night. To protect themselves from harm, people dress as witches and pass as witches themselves.

- Parts list (pattern):
Twenty five US letter sheets (No. 1 to No. 25)
- No. of Parts: 36

*Build the model by carefully reading the Assembly Instructions, in the parts sheet page order.

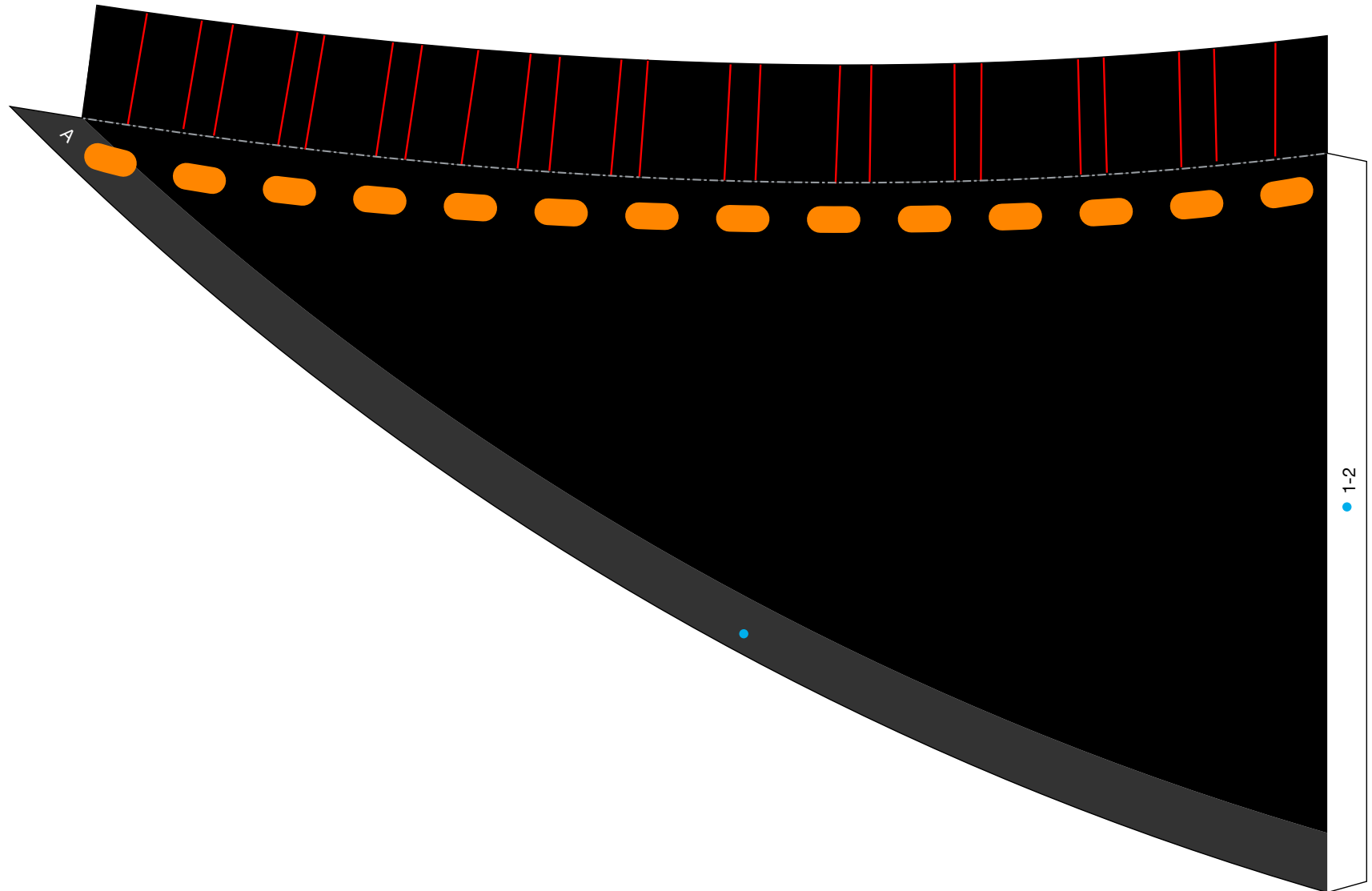
View of completed model

Witch's hat (size S) and broom (Halloween): Pattern

Canon® is a registered trademark of Canon Inc. © Canon Inc.
© Takako Takahashi



1-1

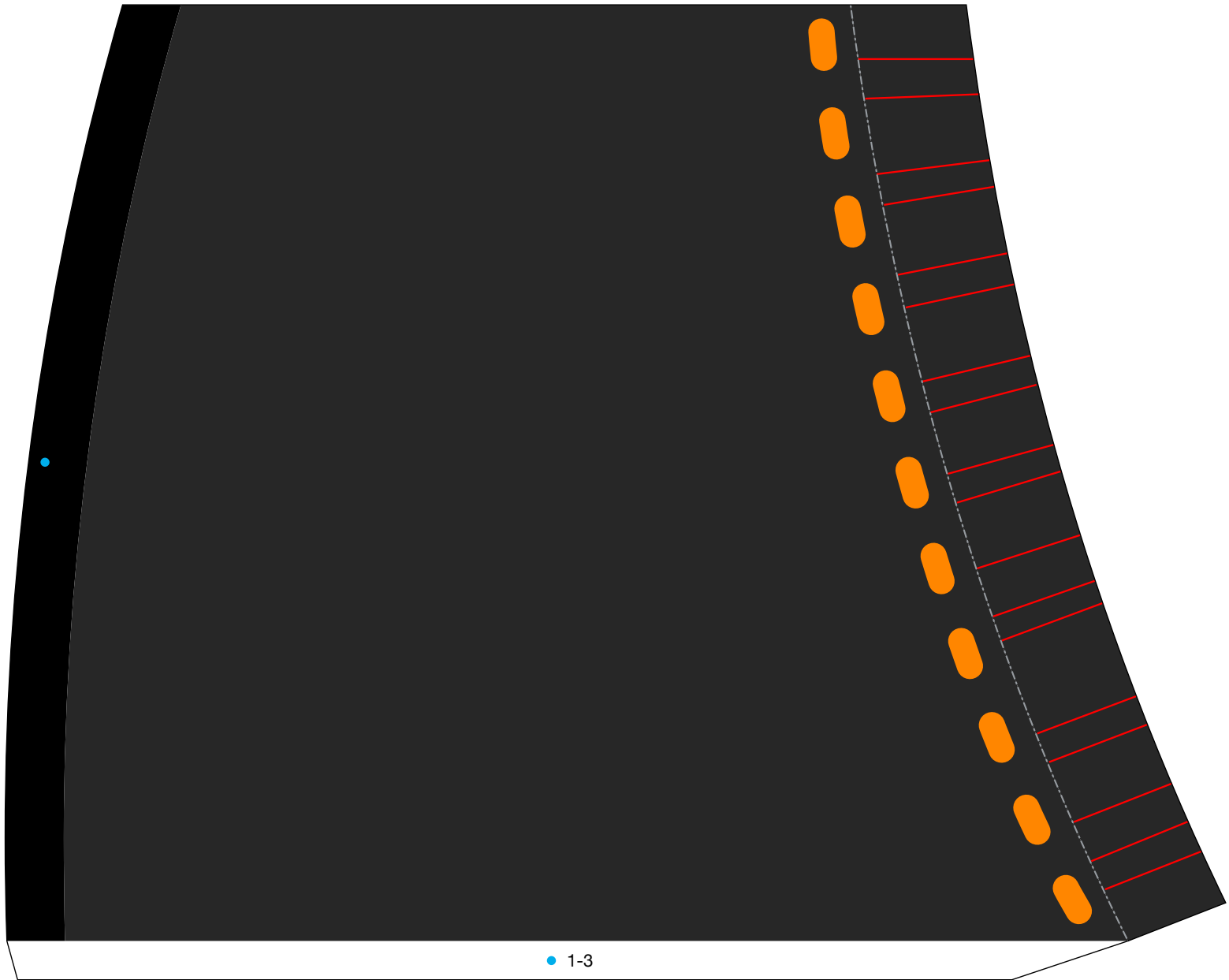


Witch's hat (size S) and broom (Halloween): Pattern

Canon® is a registered trademark of Canon Inc. © Canon Inc.
© Takako Takahashi



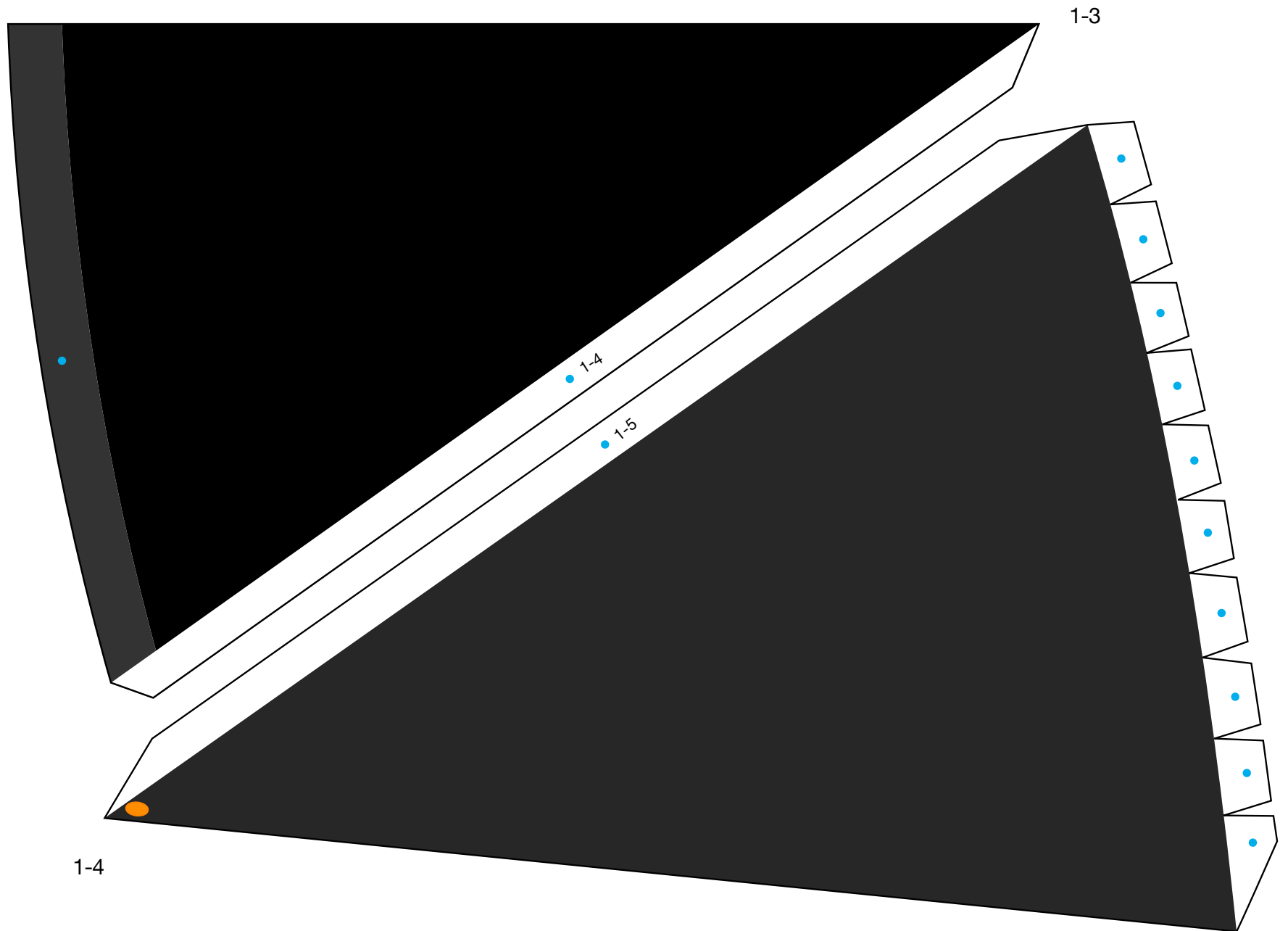
1-2



• 1-3

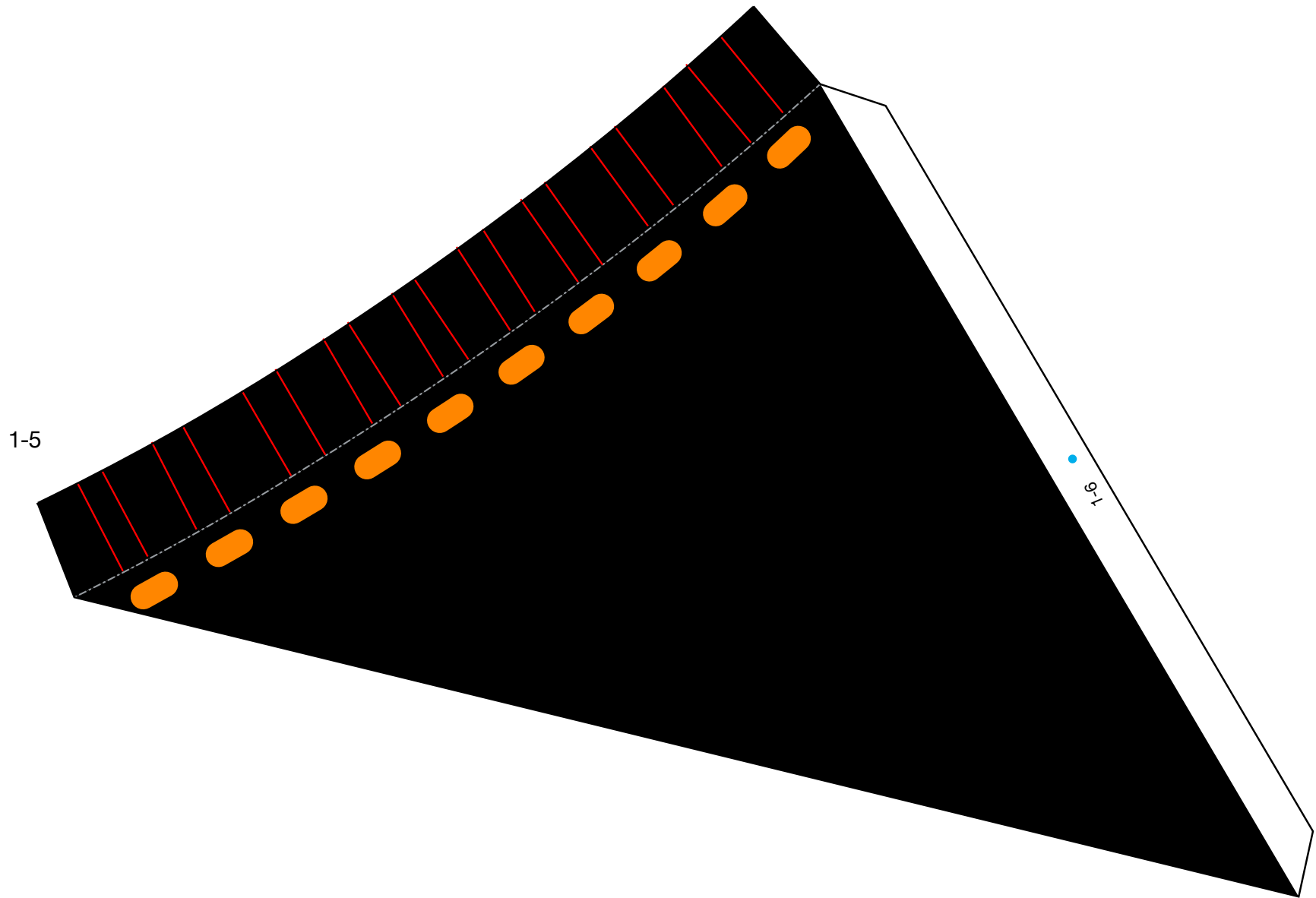
Witch's hat (size S) and broom (Halloween): Pattern

Canon® is a registered trademark of Canon Inc. © Canon Inc.
© Takako Takahashi



Witch's hat (size S) and broom (Halloween): Pattern

Canon® is a registered trademark of Canon Inc. © Canon Inc.
© Takako Takahashi

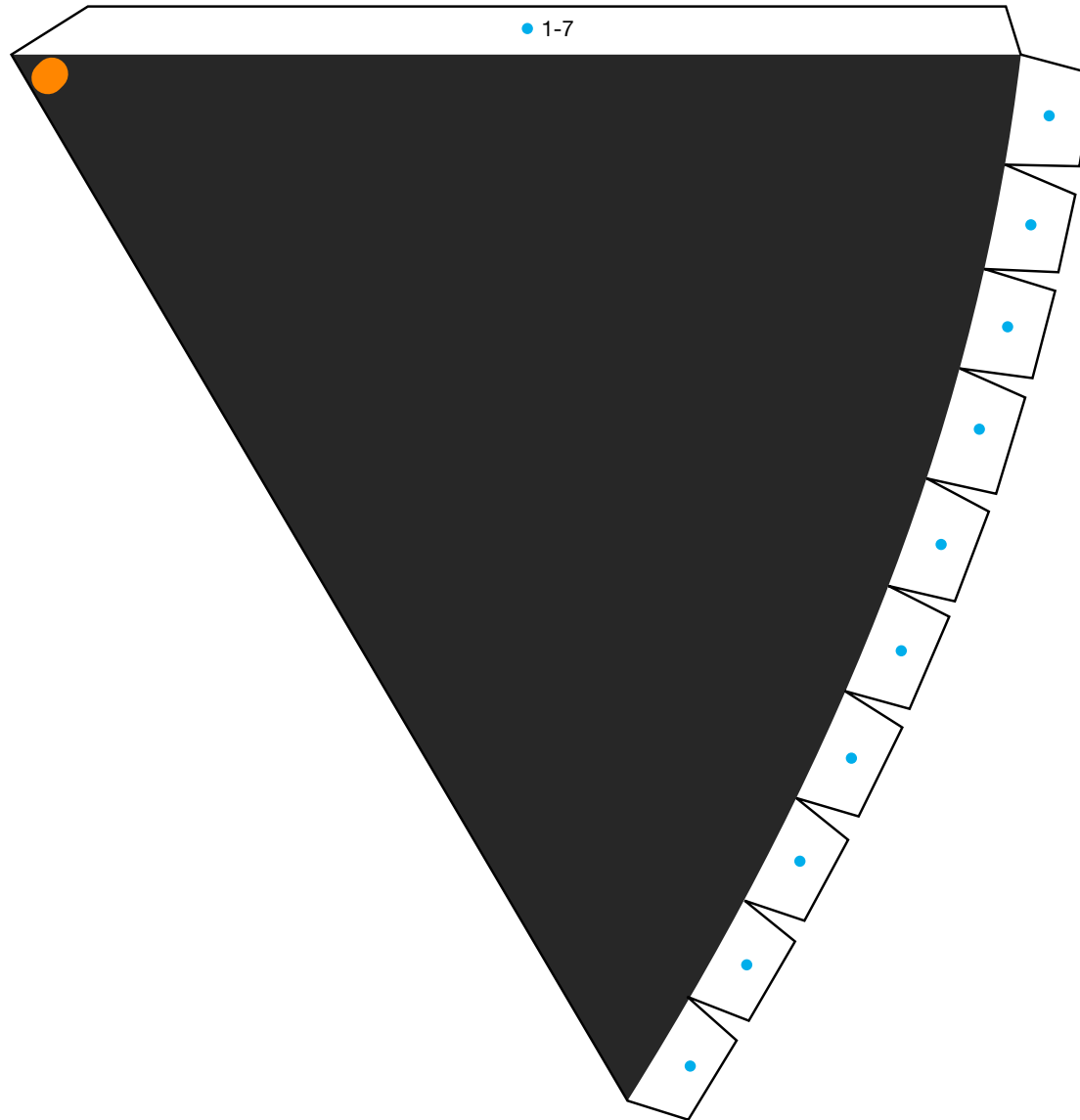


Witch's hat (size S) and broom (Halloween): Pattern

Canon® is a registered trademark of Canon Inc. © Canon Inc.
© Takako Takahashi



1-6

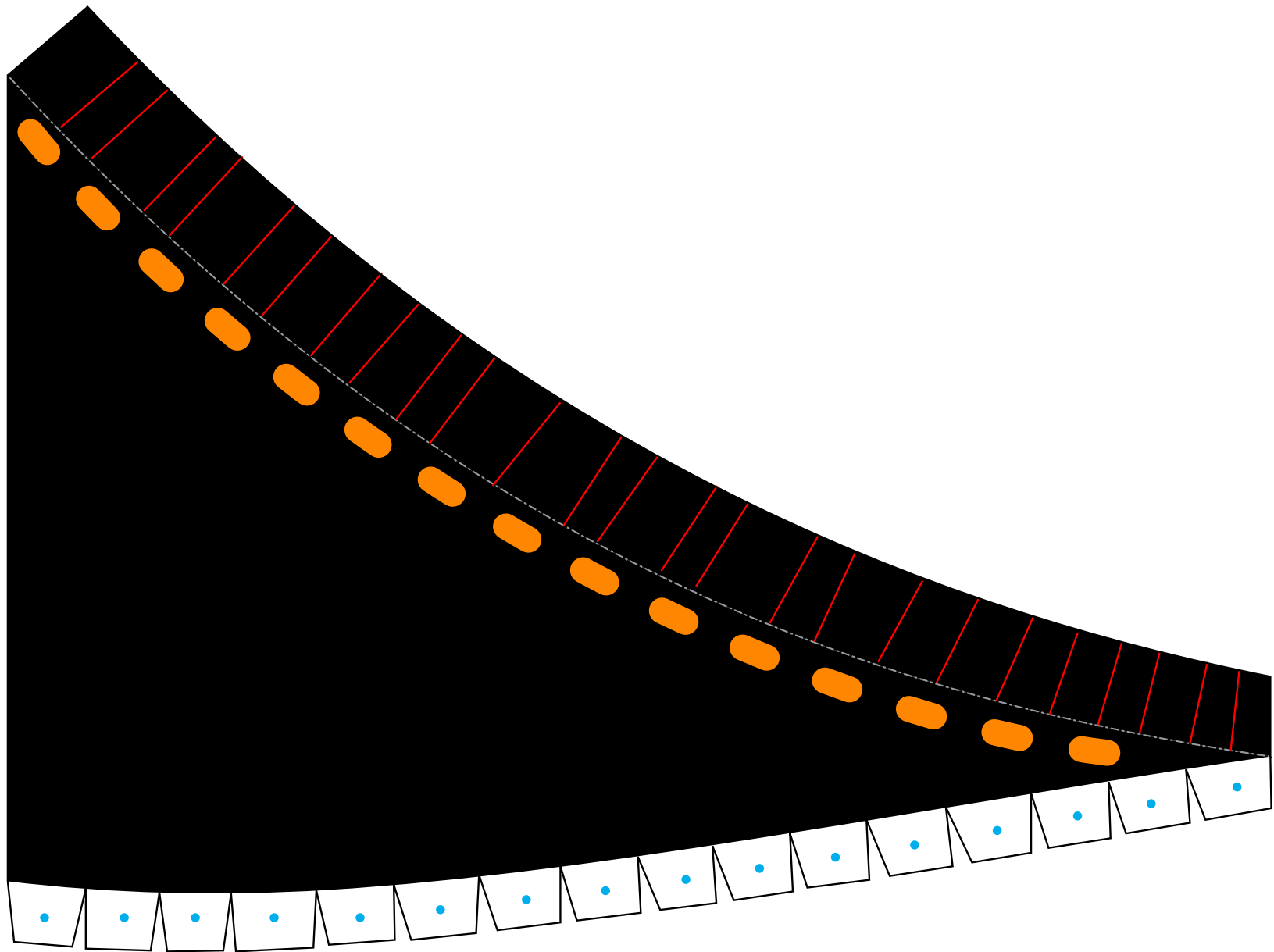


Witch's hat (size S) and broom (Halloween): Pattern

Canon® is a registered trademark of Canon Inc. © Canon Inc.
© Takako Takahashi



1-7

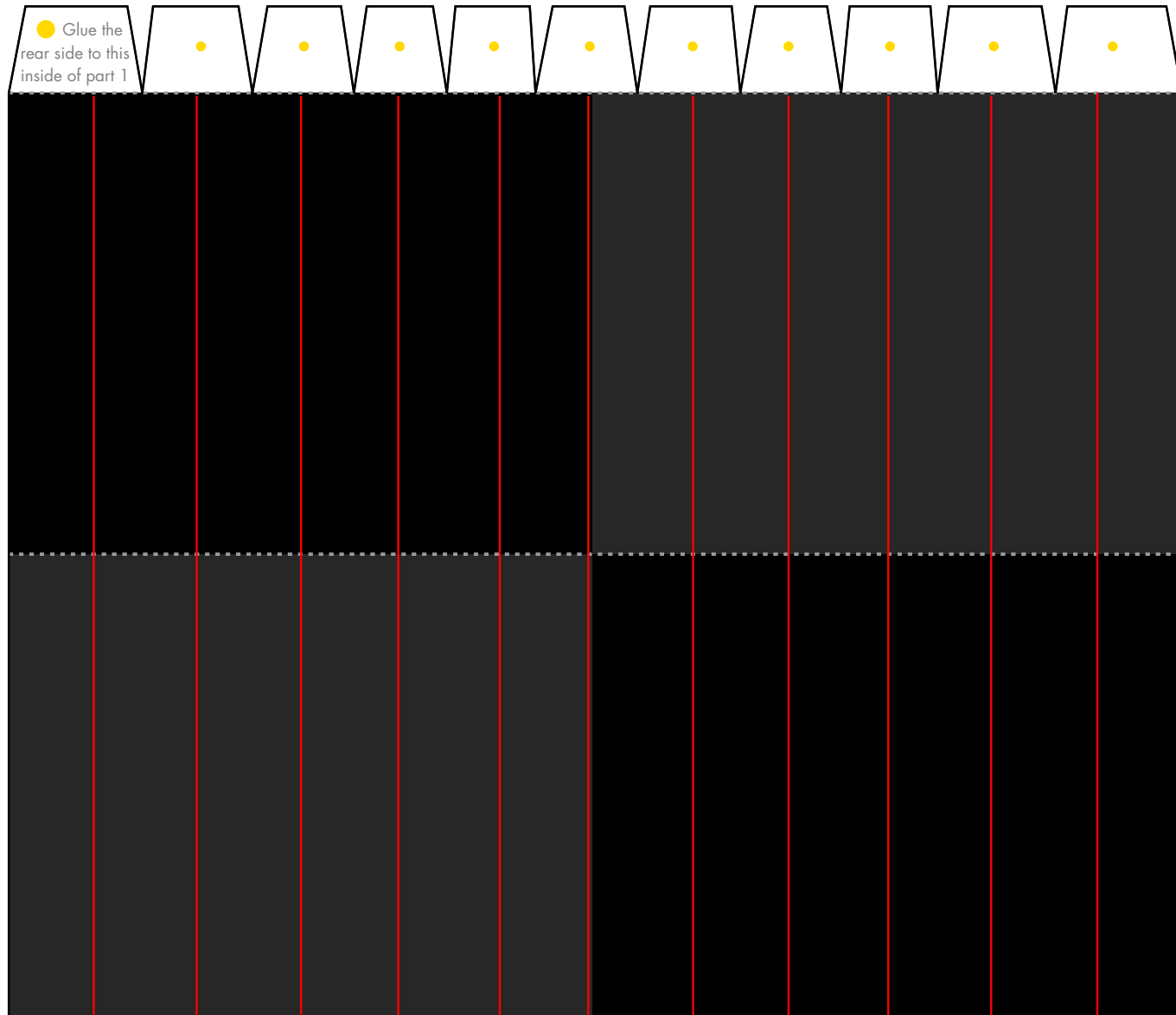


Witch's hat (size S) and broom (Halloween): Pattern

Canon® is a registered trademark of Canon Inc. © Canon Inc.
© Takako Takahashi



2-1

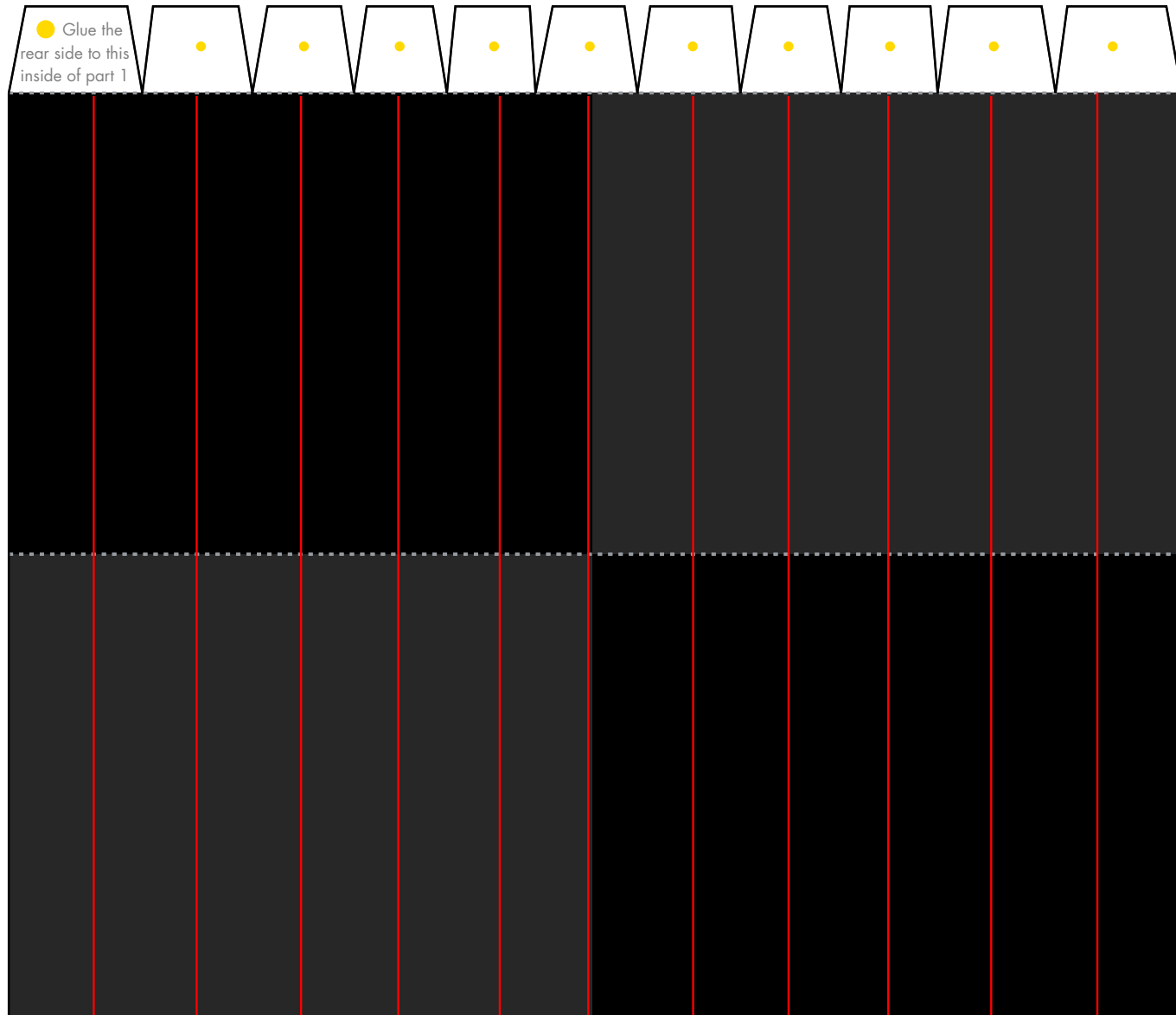


Witch's hat (size S) and broom (Halloween): Pattern

Canon® is a registered trademark of Canon Inc. © Canon Inc.
© Takako Takahashi



2-2

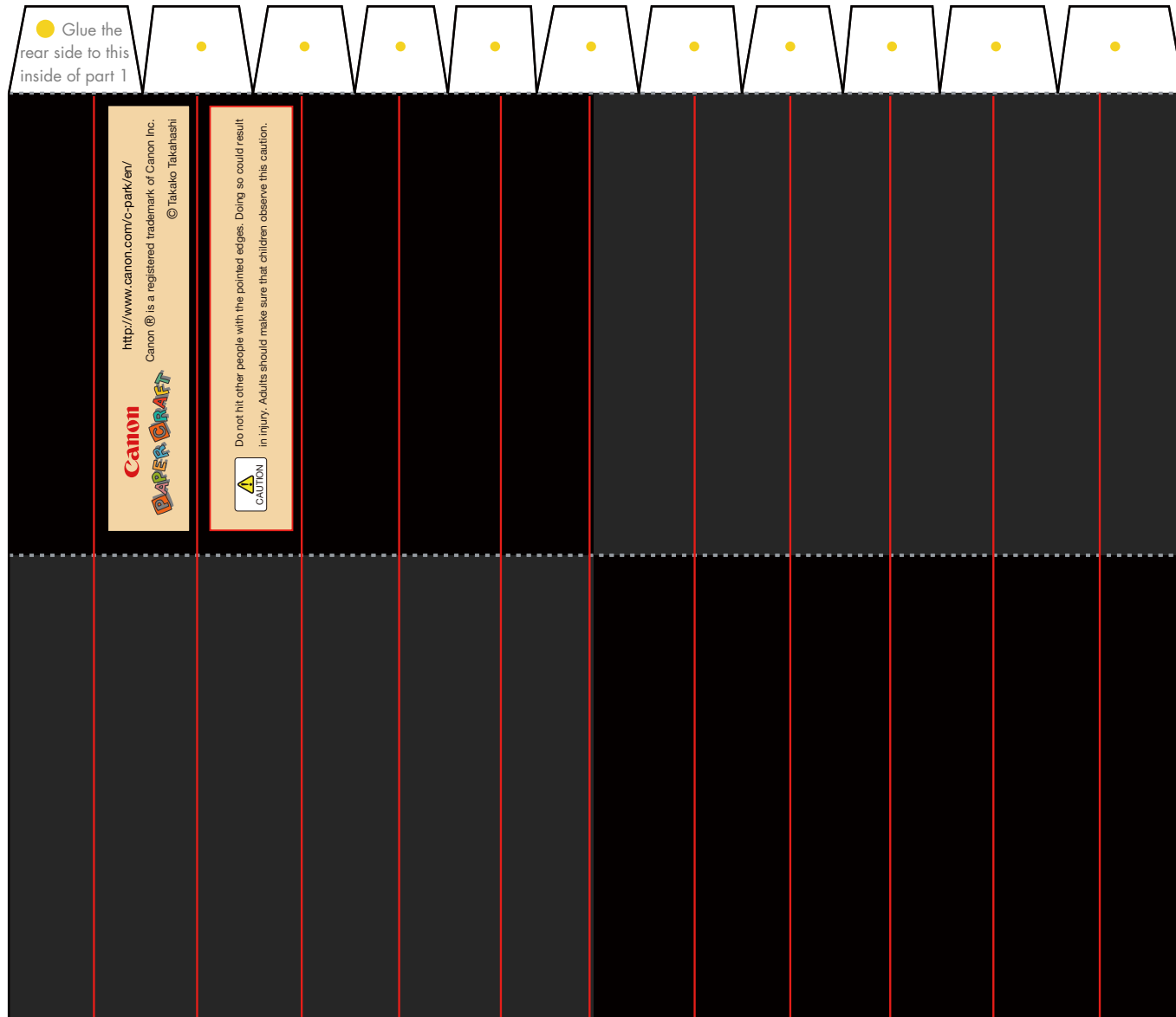


Witch's hat (size S) and broom (Halloween): Pattern

Canon® is a registered trademark of Canon Inc. © Canon Inc.
© Takako Takahashi



2-3

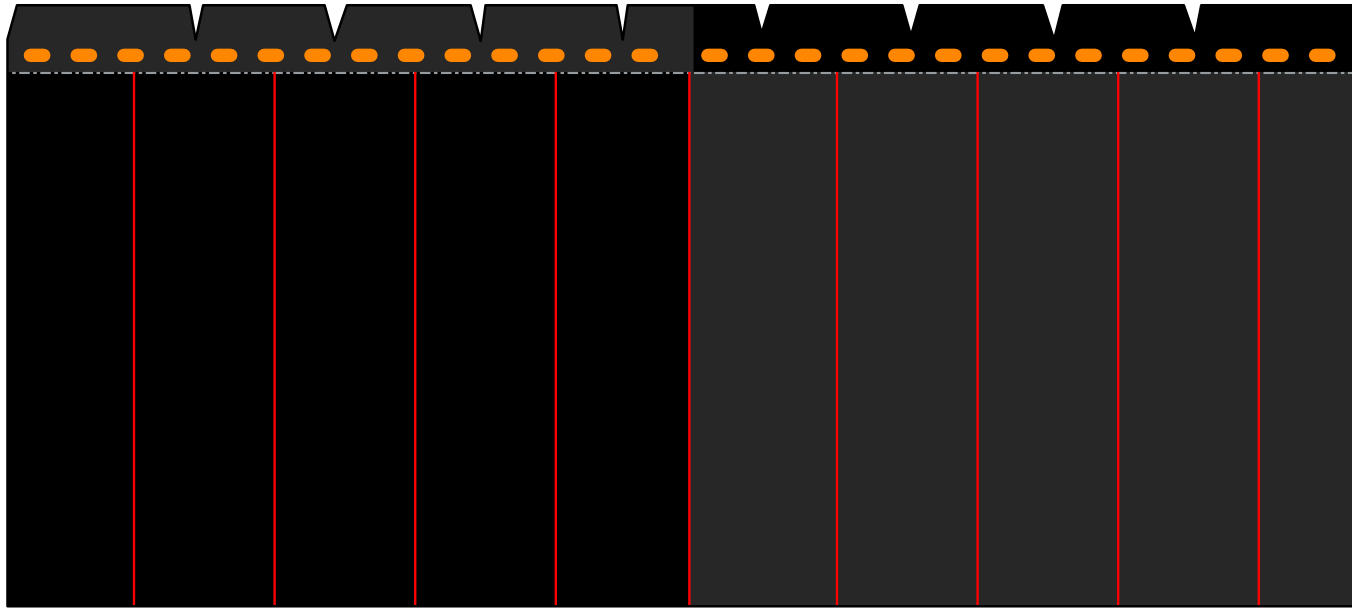


Witch's hat (size S) and broom (Halloween): Pattern

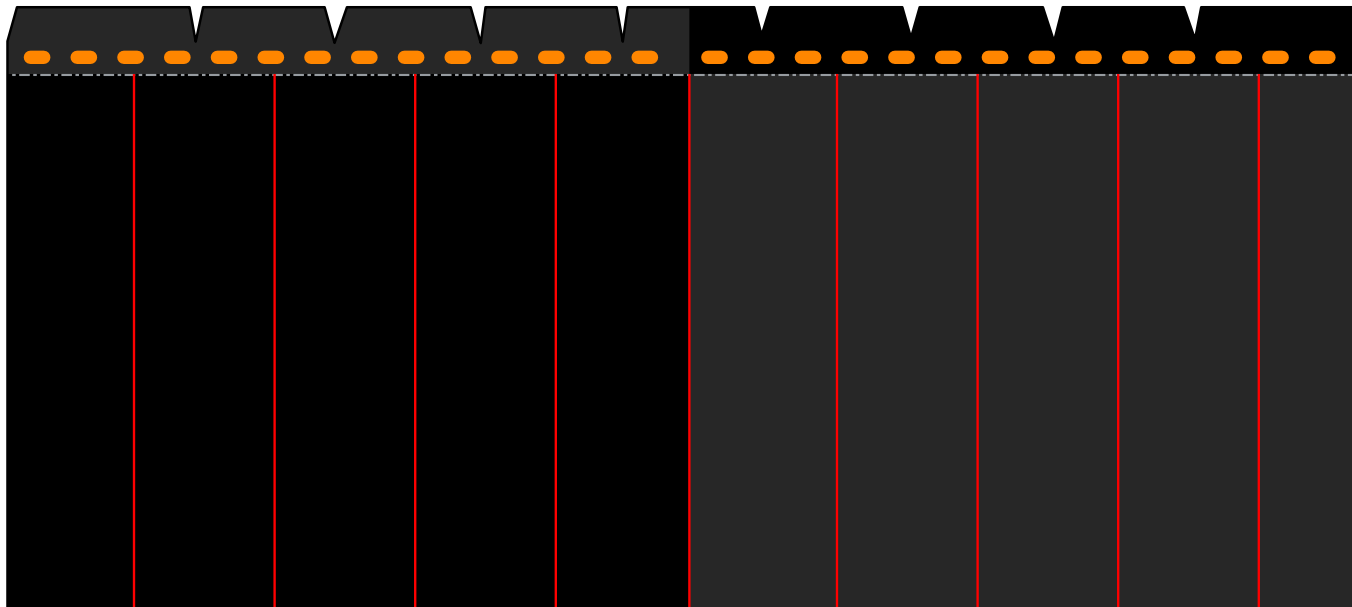
Canon® is a registered trademark of Canon Inc. © Canon Inc.
© Takako Takahashi



2-4



2-5

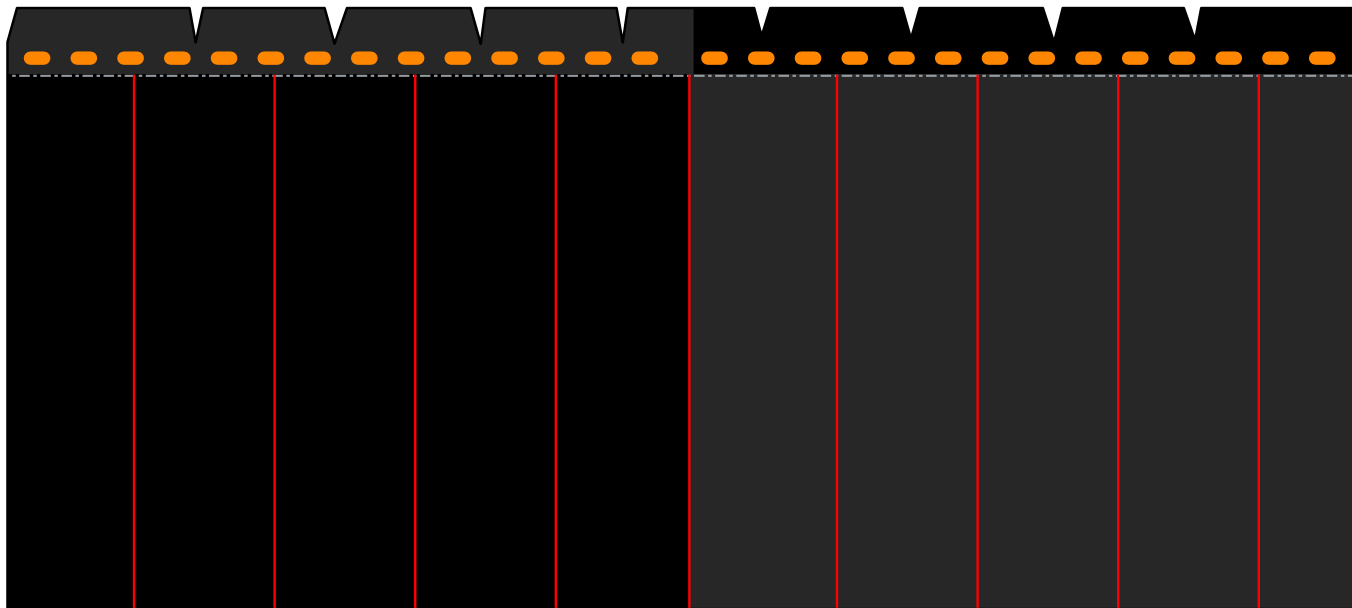


Witch's hat (size S) and broom (Halloween): Pattern

Canon® is a registered trademark of Canon Inc. © Canon Inc.
© Takako Takahashi



2-6

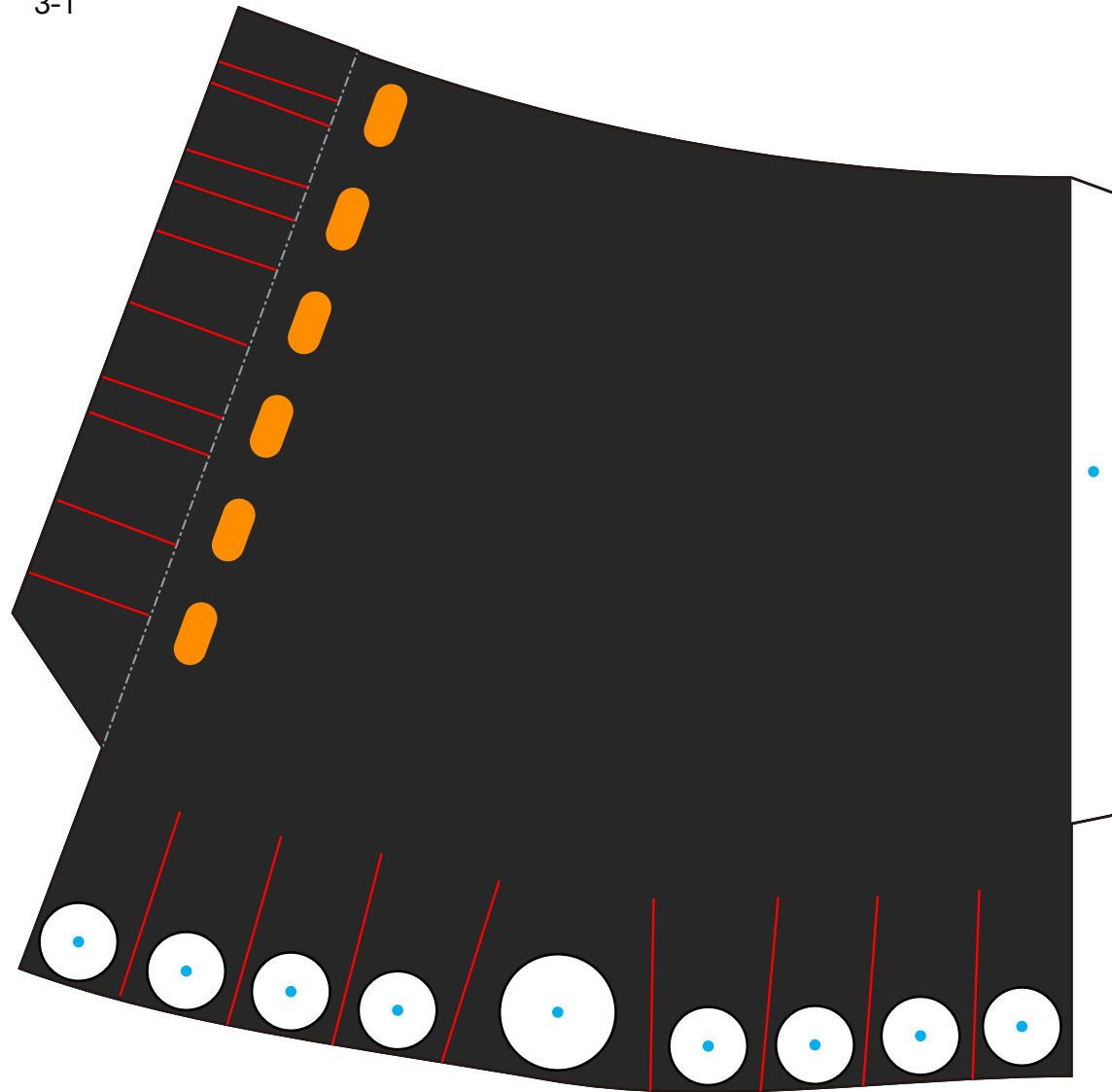


Witch's hat (size S) and broom (Halloween): Pattern

Canon® is a registered trademark of Canon Inc. © Canon Inc.
© Takako Takahashi



3-1

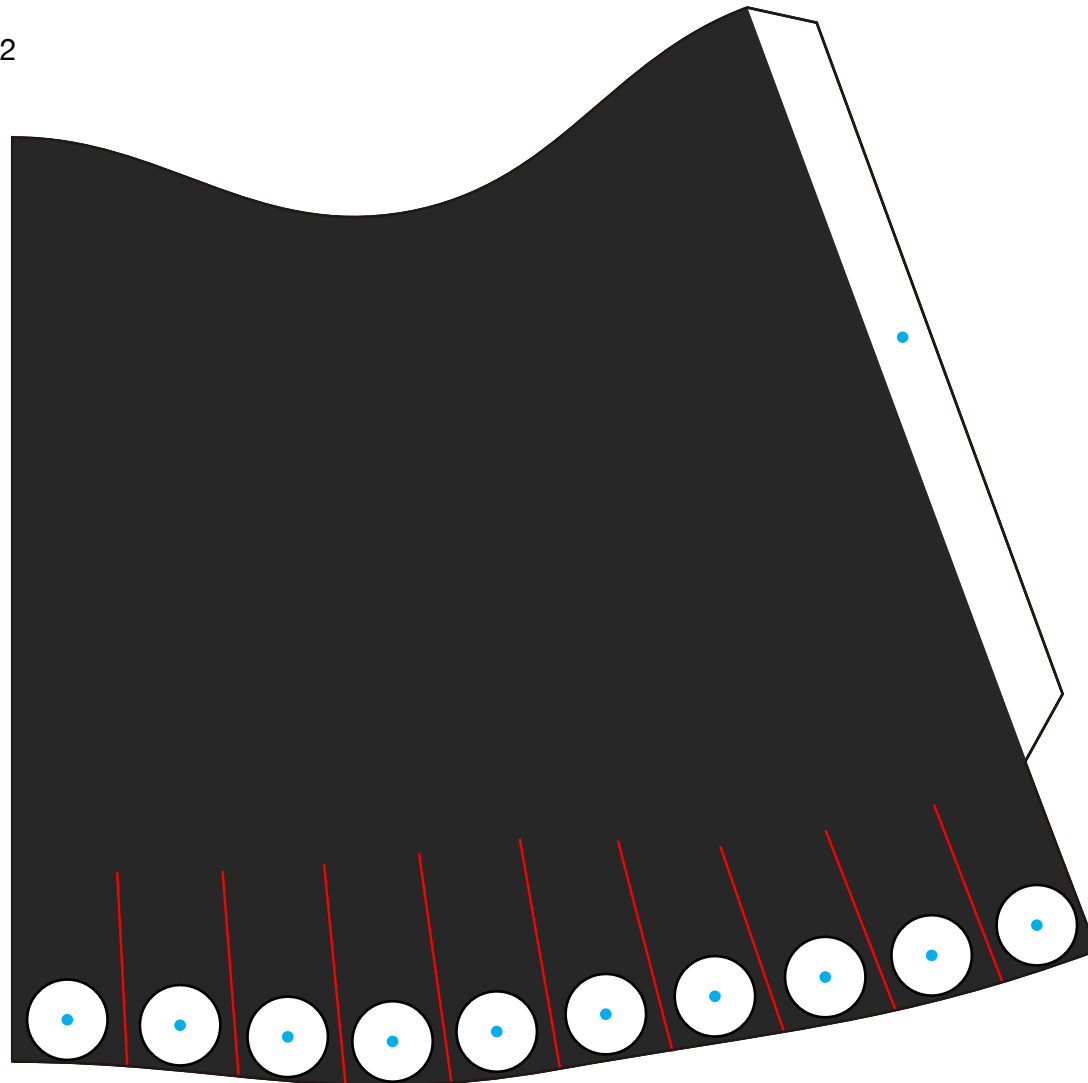


Witch's hat (size S) and broom (Halloween): Pattern

Canon® is a registered trademark of Canon Inc. © Canon Inc.
© Takako Takahashi



3-2

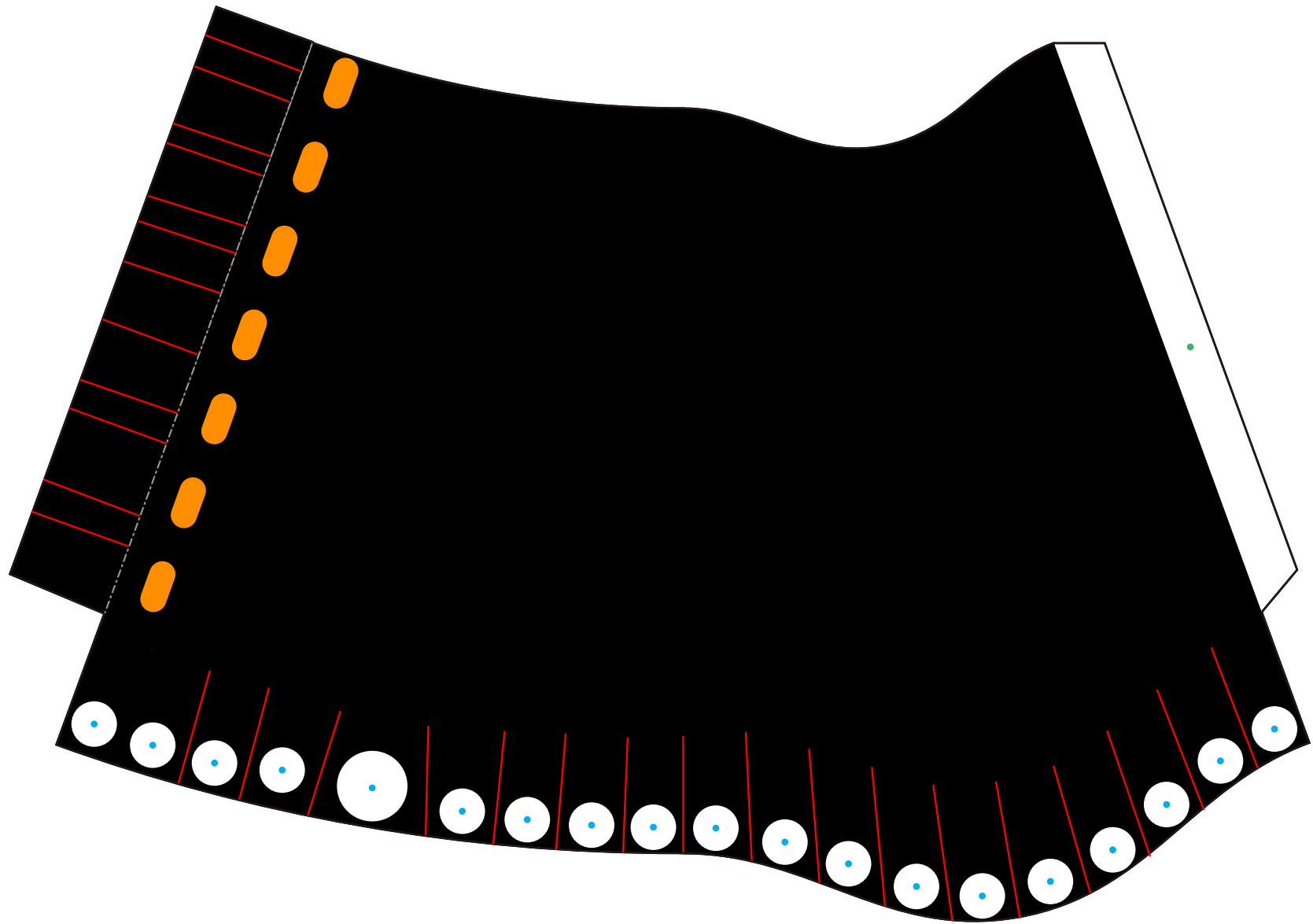


Witch's hat (size S) and broom (Halloween): Pattern

Canon® is a registered trademark of Canon Inc. © Canon Inc.
© Takako Takahashi



3-3

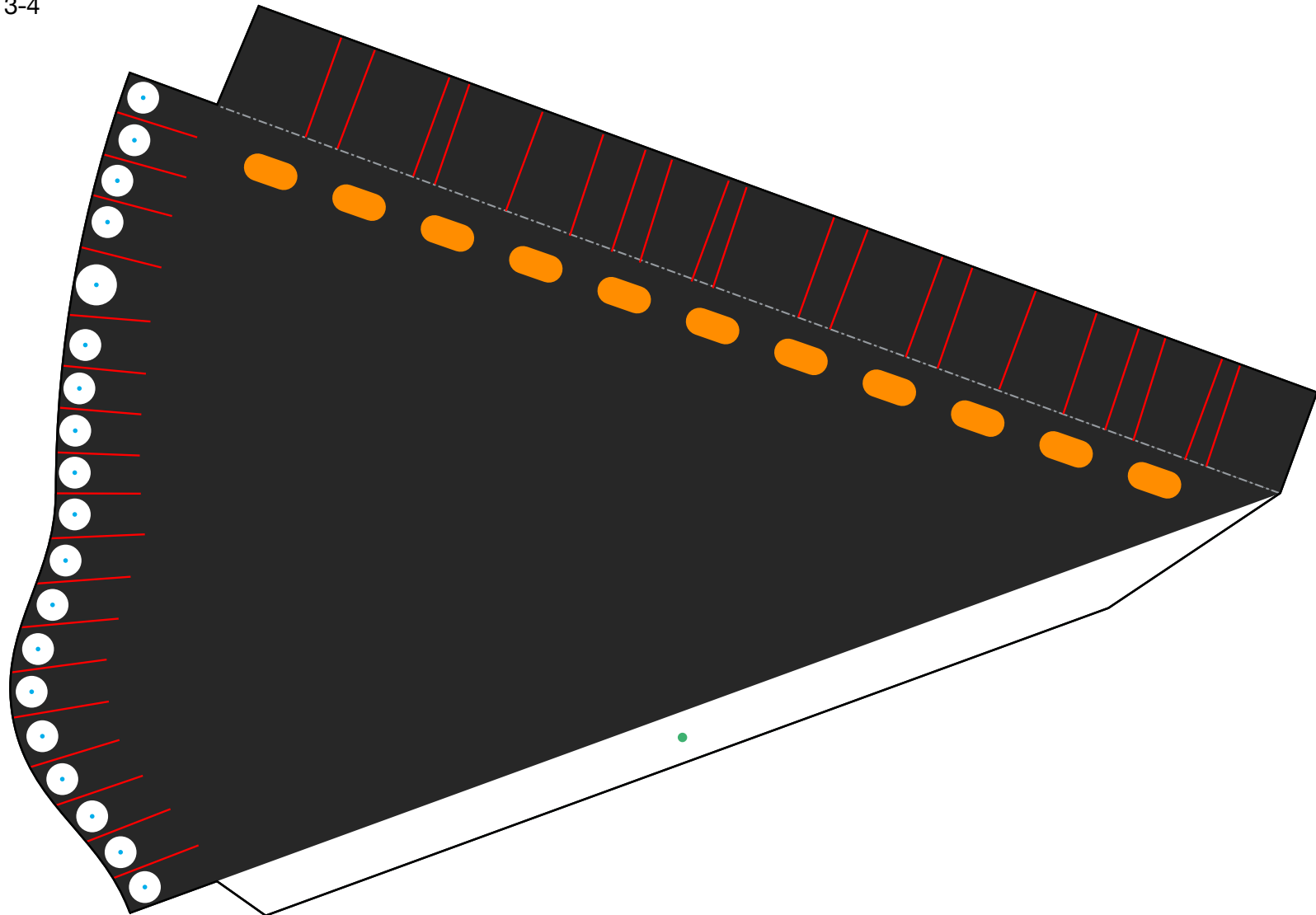


Witch's hat (size S) and broom (Halloween): Pattern

Canon® is a registered trademark of Canon Inc. © Canon Inc.
© Takako Takahashi



3-4

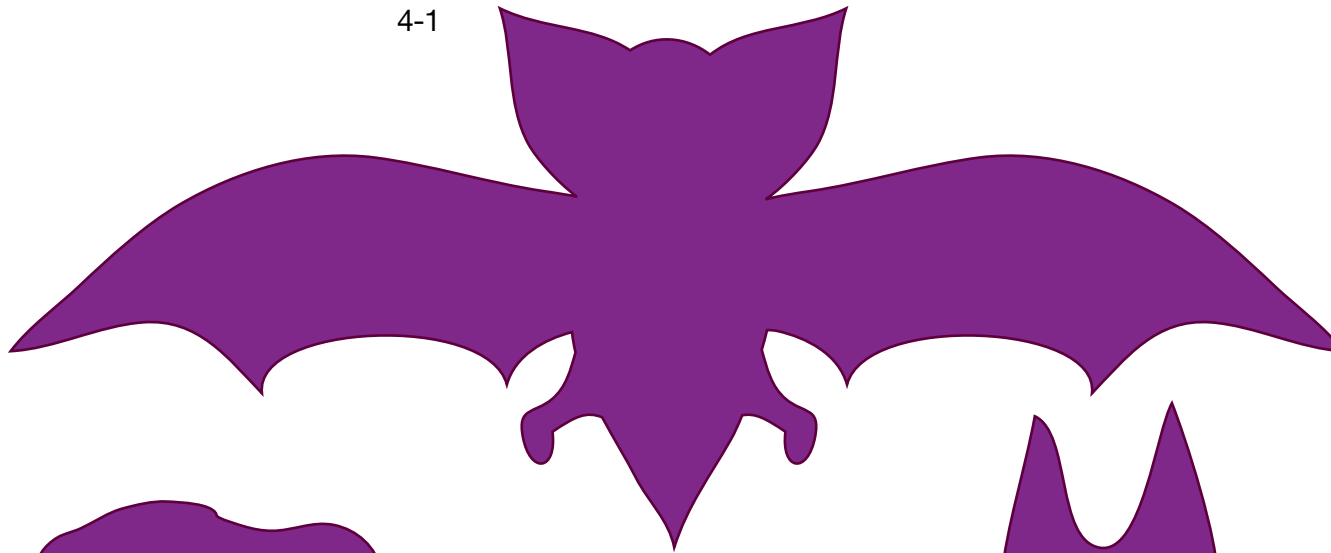


Witch's hat (size S) and broom (Halloween): Pattern

Canon® is a registered trademark of Canon Inc. © Canon Inc.
© Takako Takahashi



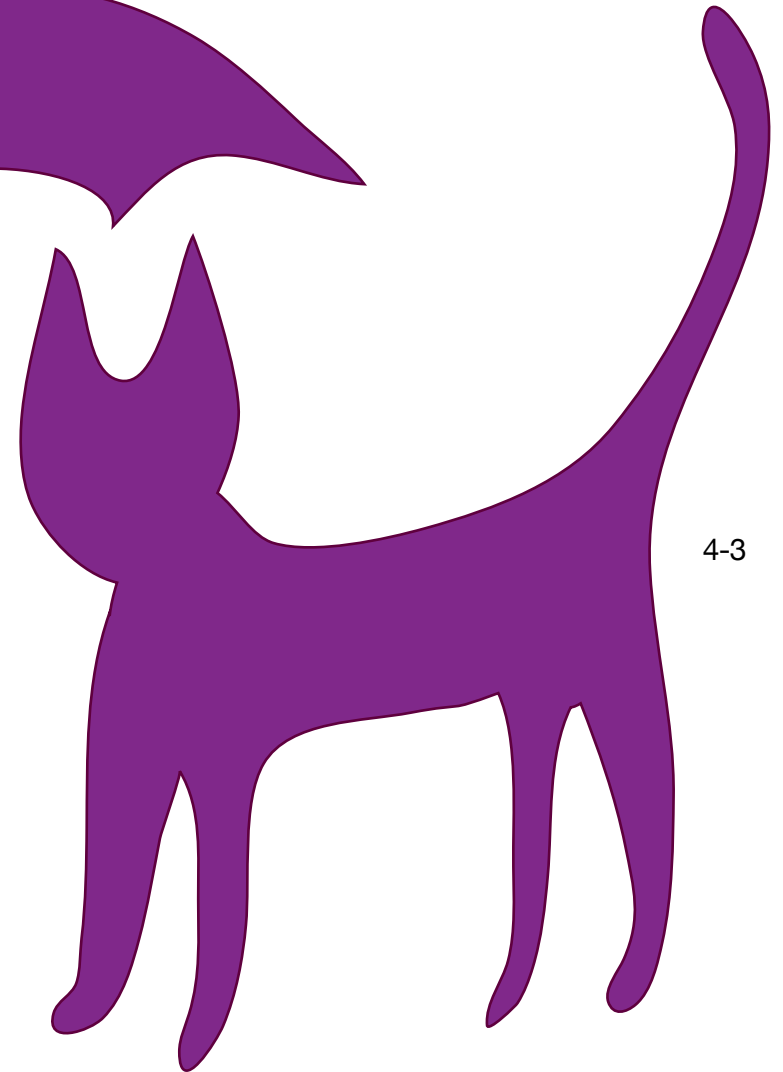
4-1



4-2



4-3

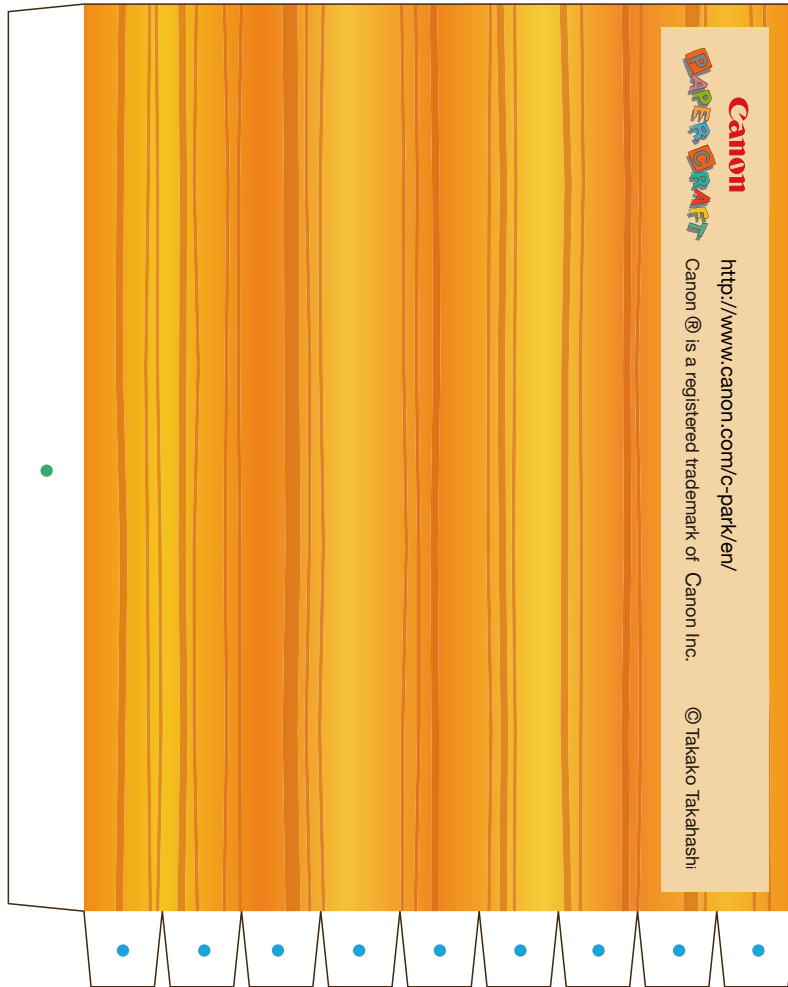


Witch's hat (size S) and broom (Halloween): Pattern

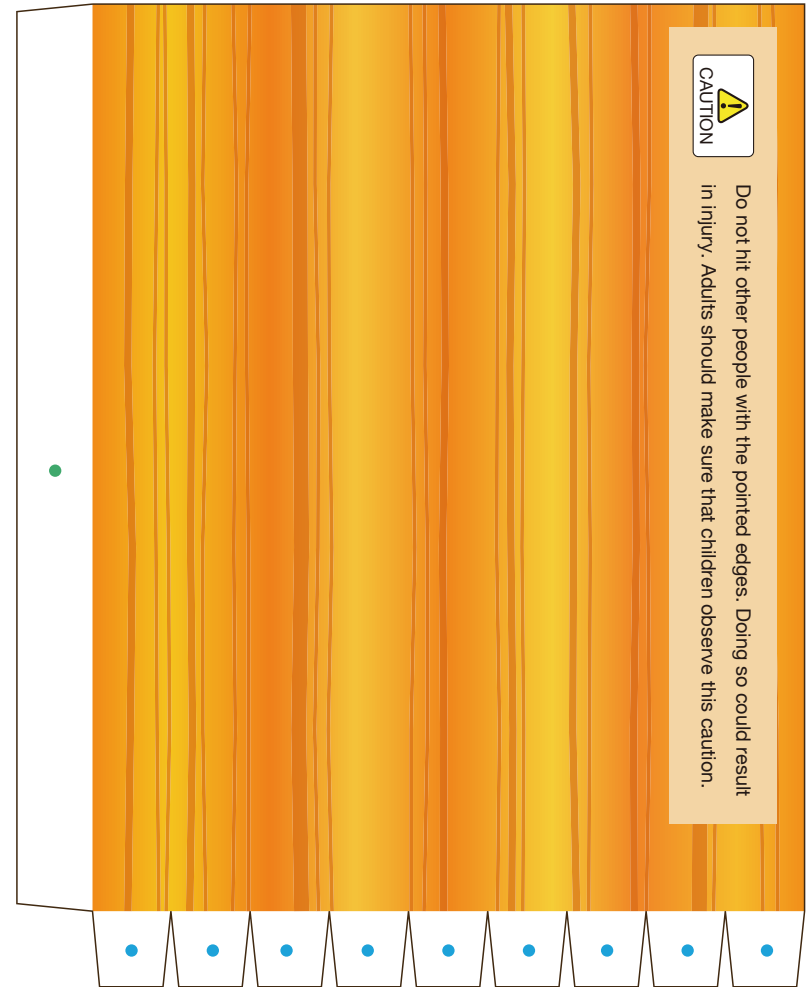
Canon® is a registered trademark of Canon Inc. © Canon Inc.
© Takako Takahashi



5-1



5-2

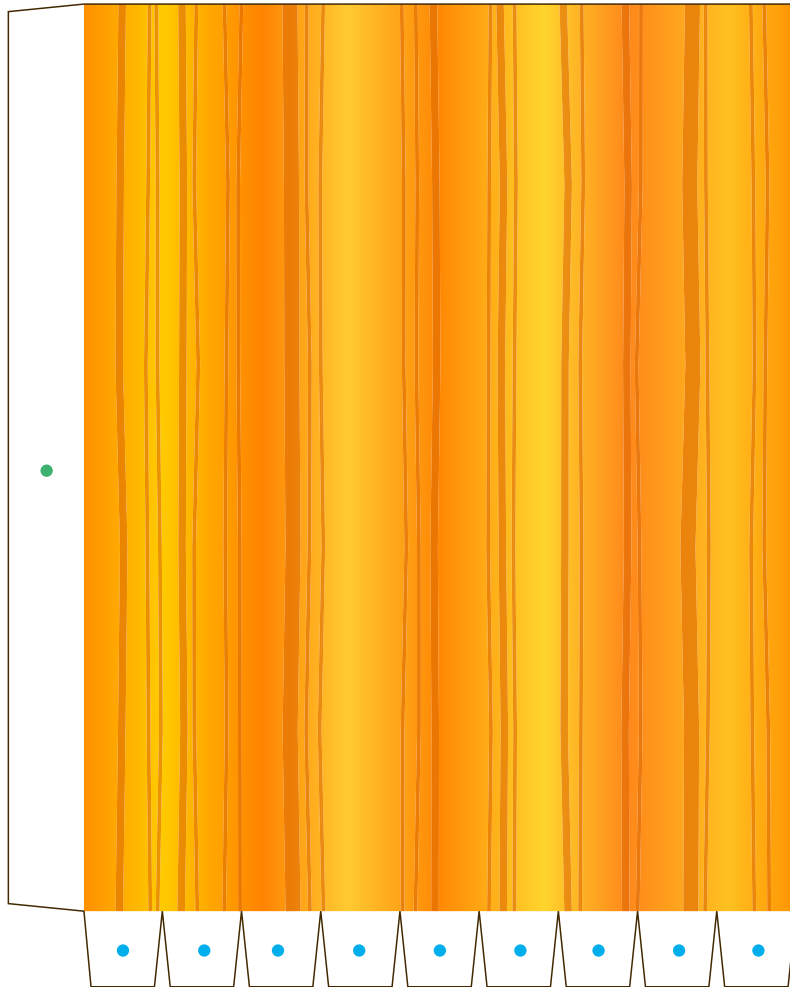


Witch's hat (size S) and broom (Halloween): Pattern

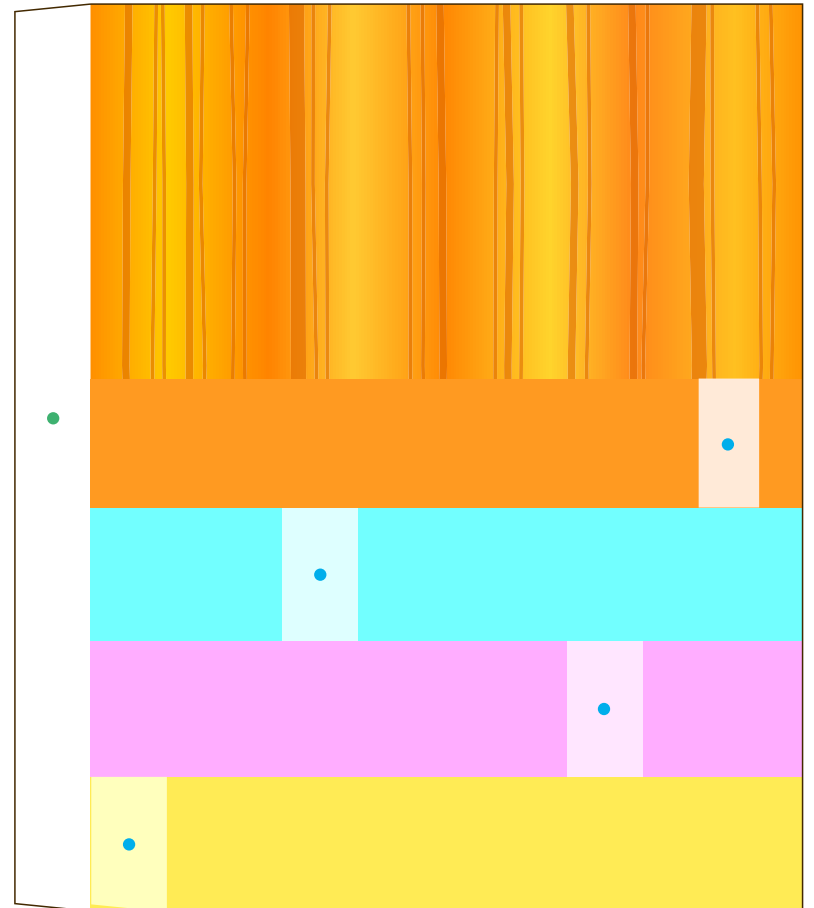
Canon® is a registered trademark of Canon Inc. © Canon Inc.
© Takako Takahashi



5-3



5-4



5-5



Witch's hat (size S) and broom (Halloween): Pattern

Canon® is a registered trademark of Canon Inc. © Canon Inc.
© Takako Takahashi



6-1

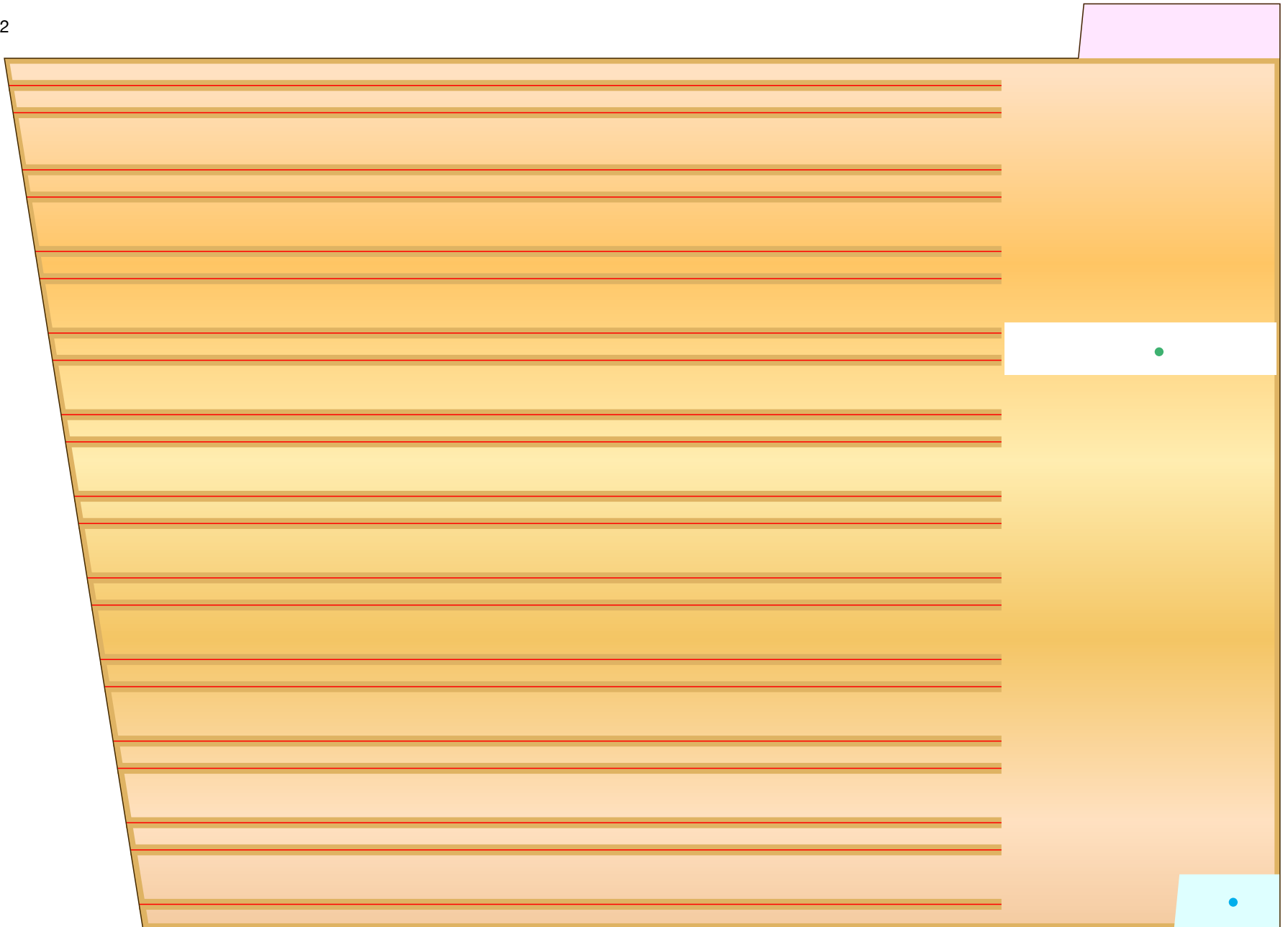


Witch's hat (size S) and broom (Halloween): Pattern

Canon® is a registered trademark of Canon Inc. © Canon Inc.
© Takako Takahashi



6-2

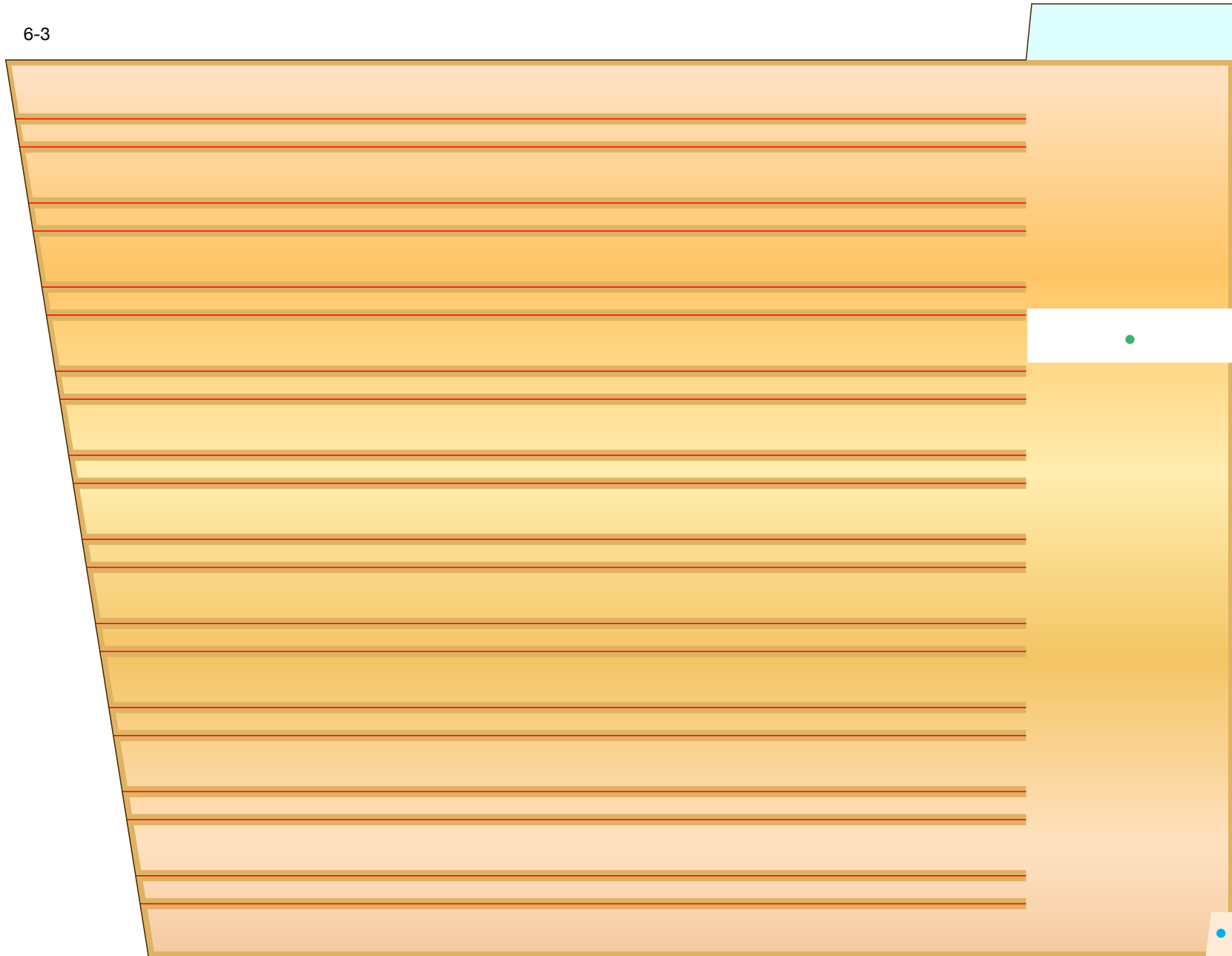


Witch's hat (size S) and broom (Halloween): Pattern

Canon ® is a registered trademark of Canon Inc. © Canon Inc.
© Takako Takahashi



6-3

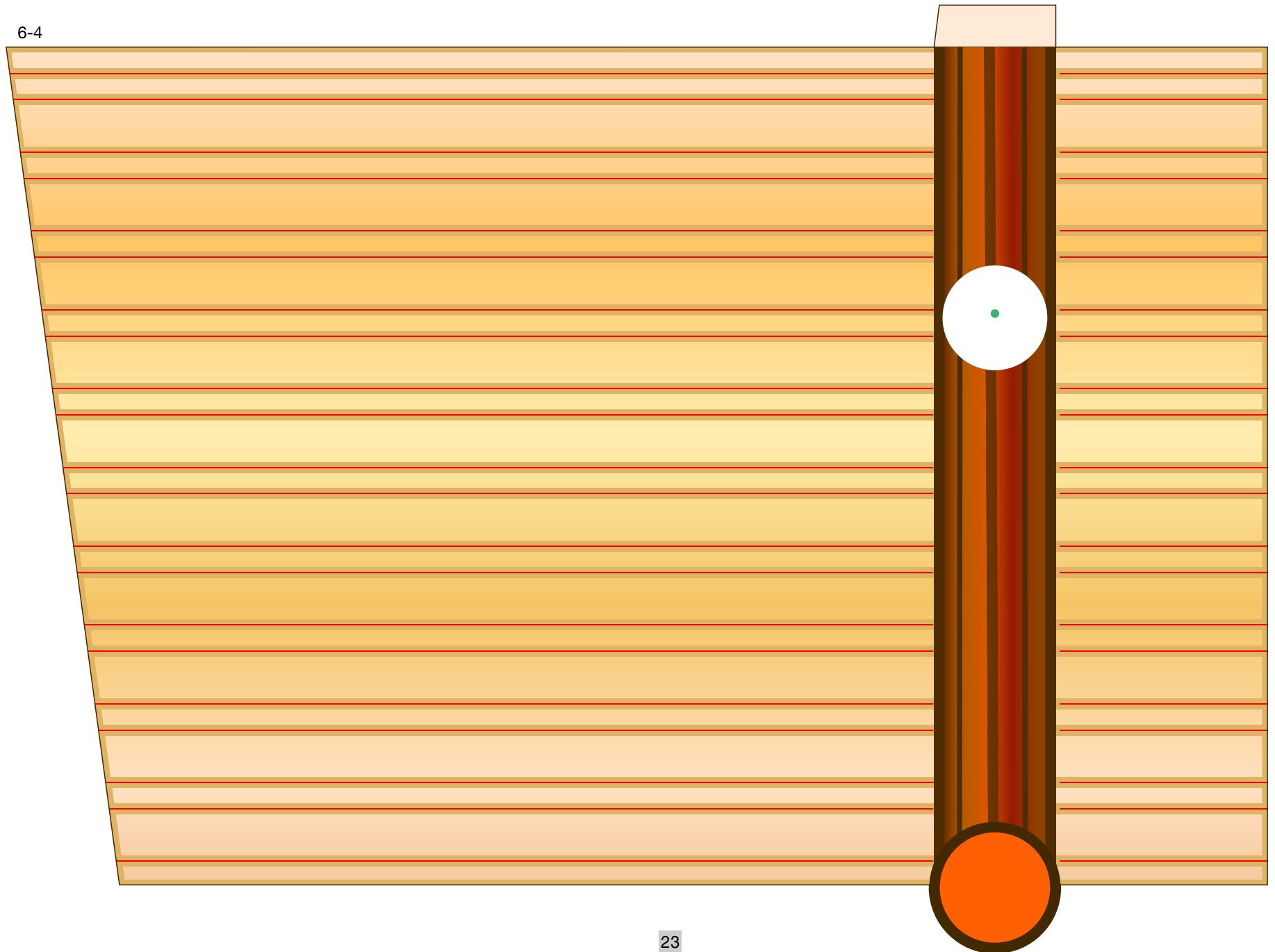


Witch's hat (size S) and broom (Halloween): Pattern

Canon ® is a registered trademark of Canon Inc. © Canon Inc.
© Takako Takahashi

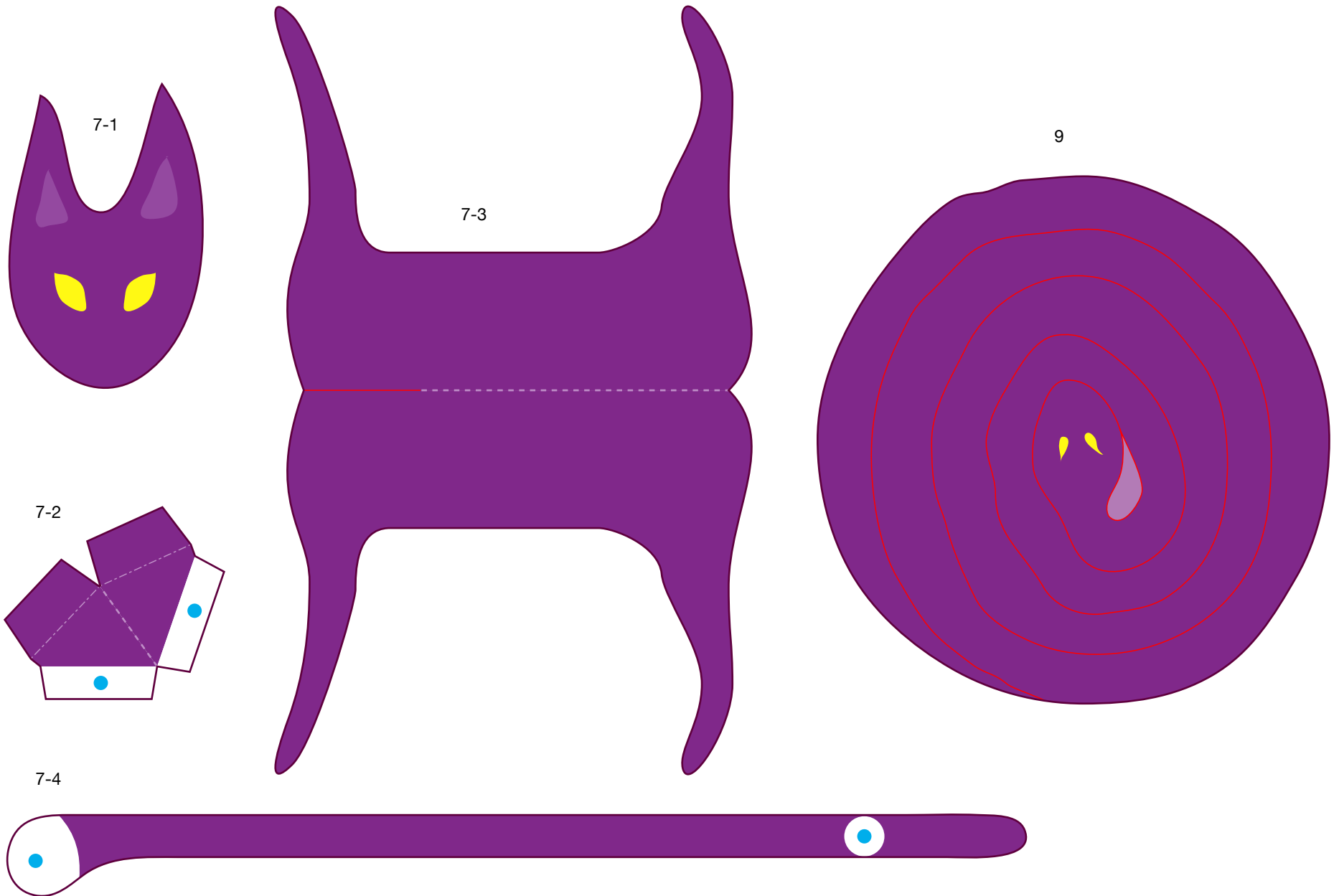


6-4



Witch's hat (size S) and broom (Halloween): Pattern

Canon® is a registered trademark of Canon Inc. © Canon Inc.
© Takako Takahashi



Witch's hat (size S) and broom (Halloween): Pattern

Canon® is a registered trademark of Canon Inc. © Canon Inc.
© Takako Takahashi



8-2

