

PAPER CRAFT

<http://www.canon.com/c-park/en/>



View of completed model

Santa Claus in his sleigh

With his red garb, hat, and white beard, Santa Claus rides in a sleigh pulled by a team of red-nosed reindeer to deliver presents to children all around the world. Although Santa is now a quintessential symbol of Christmas, the tradition of Santa Claus delivering gifts on Christmas Eve is said to have begun only in the 19th century. Before then, gifts were delivered on the feast of St. Nicholas - the historical figure who inspired Santa Claus - held December 6.

■ Parts list (pattern): Ten US letter sheets (No.1 to No.10)

■ No. of Parts: 56

* Build the model by carefully reading the Assembly Instructions, in the parts sheet page order.



Santa Claus and his reindeer



Stand



Cottage



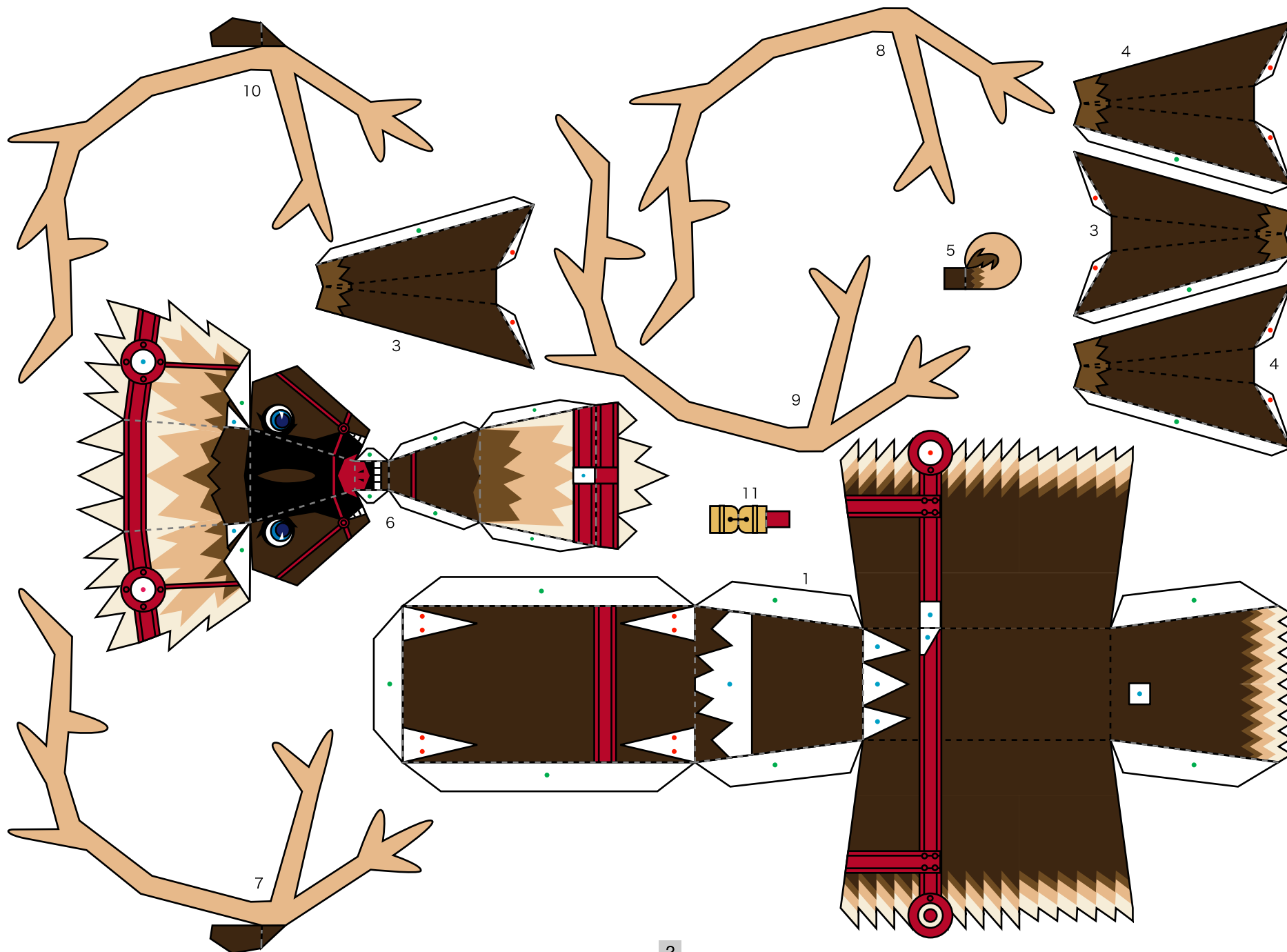
Snowman



Christmas tree

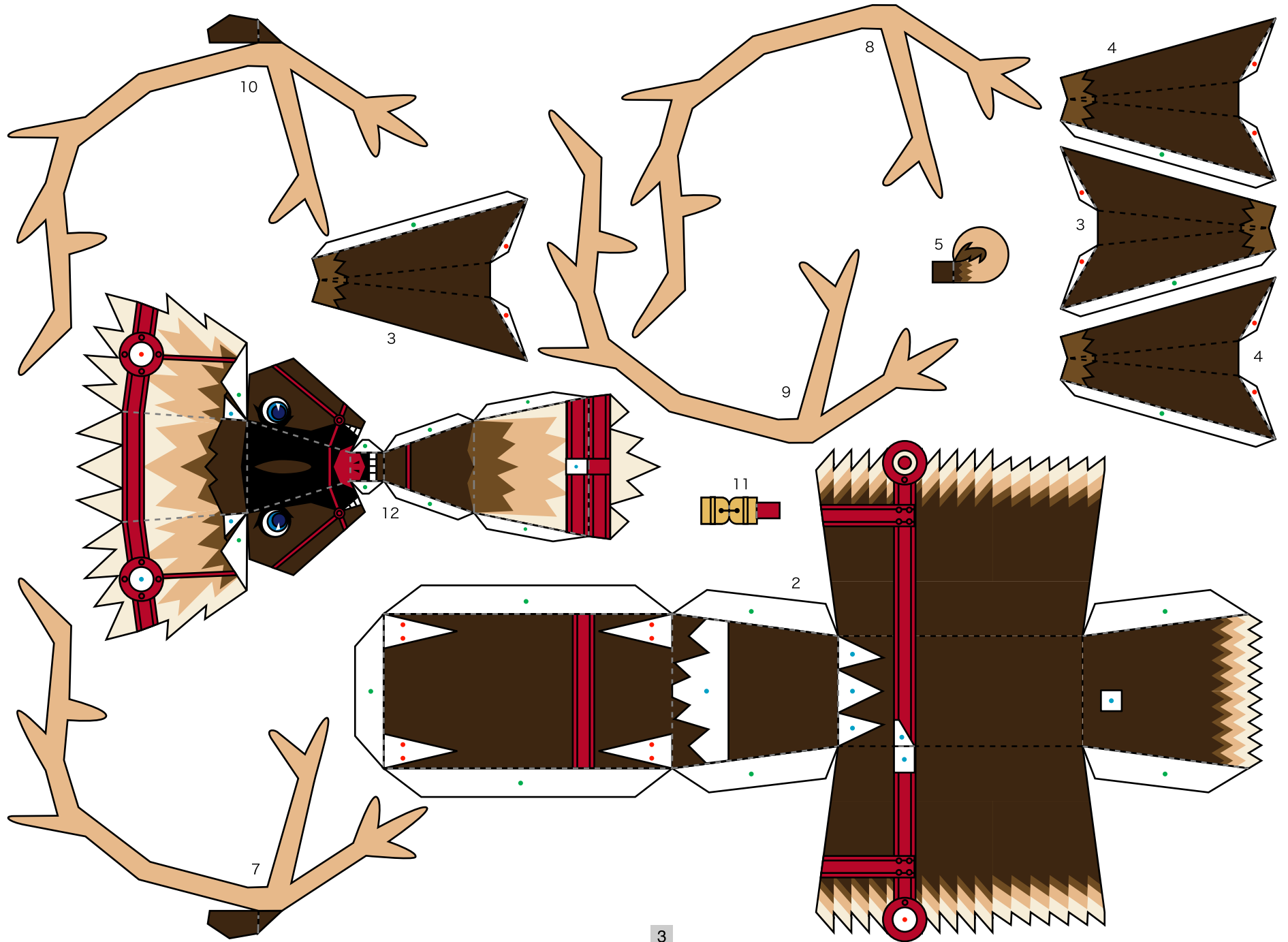
Santa Claus in his sleigh: Pattern

© Canon Inc. © T. Ichiyama



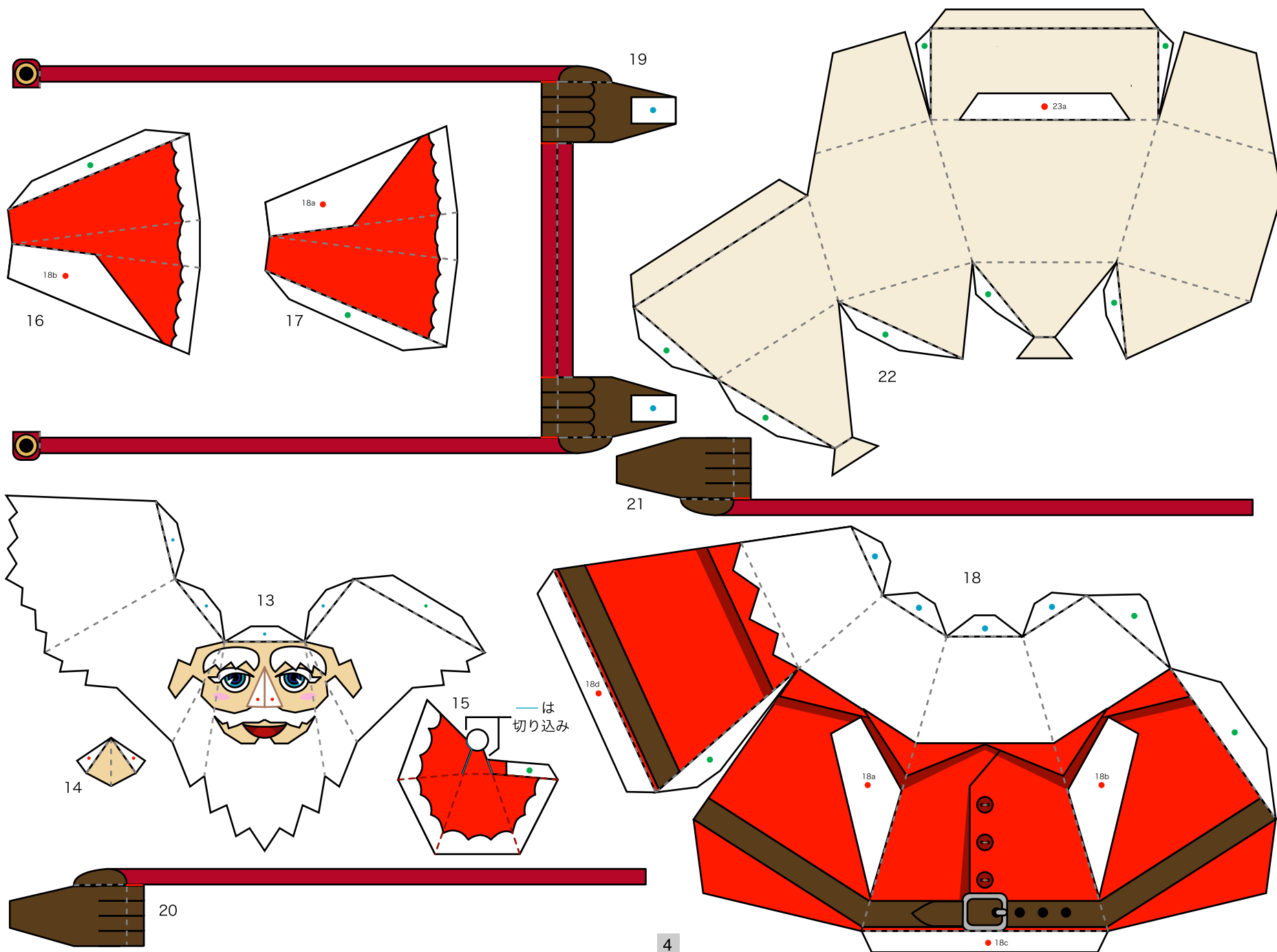
Santa Claus in his sleigh: Pattern

© Canon Inc. © T. Ichiyama



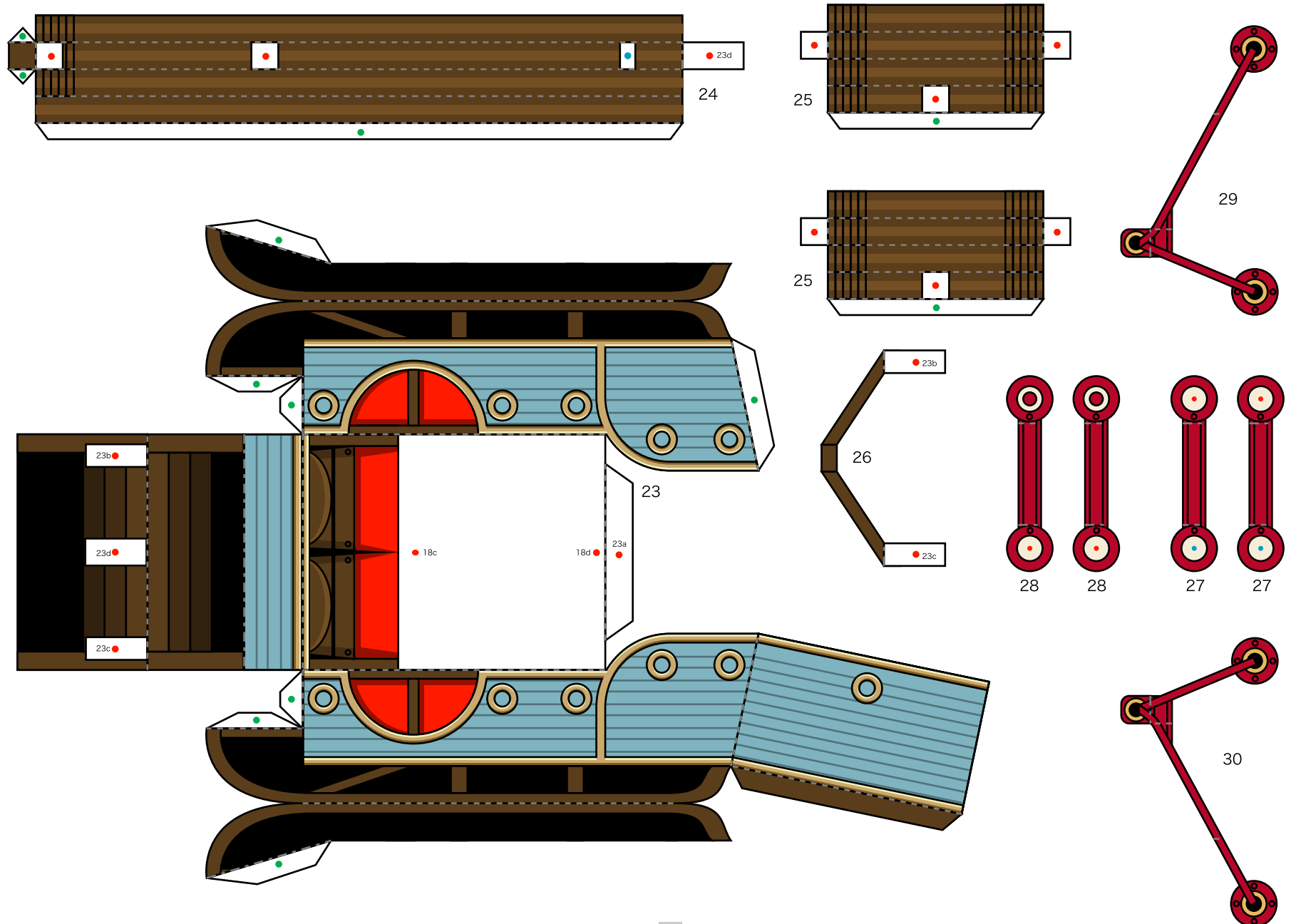
Santa Claus in his sleigh: Pattern

© Canon Inc. © T. Ichiyama



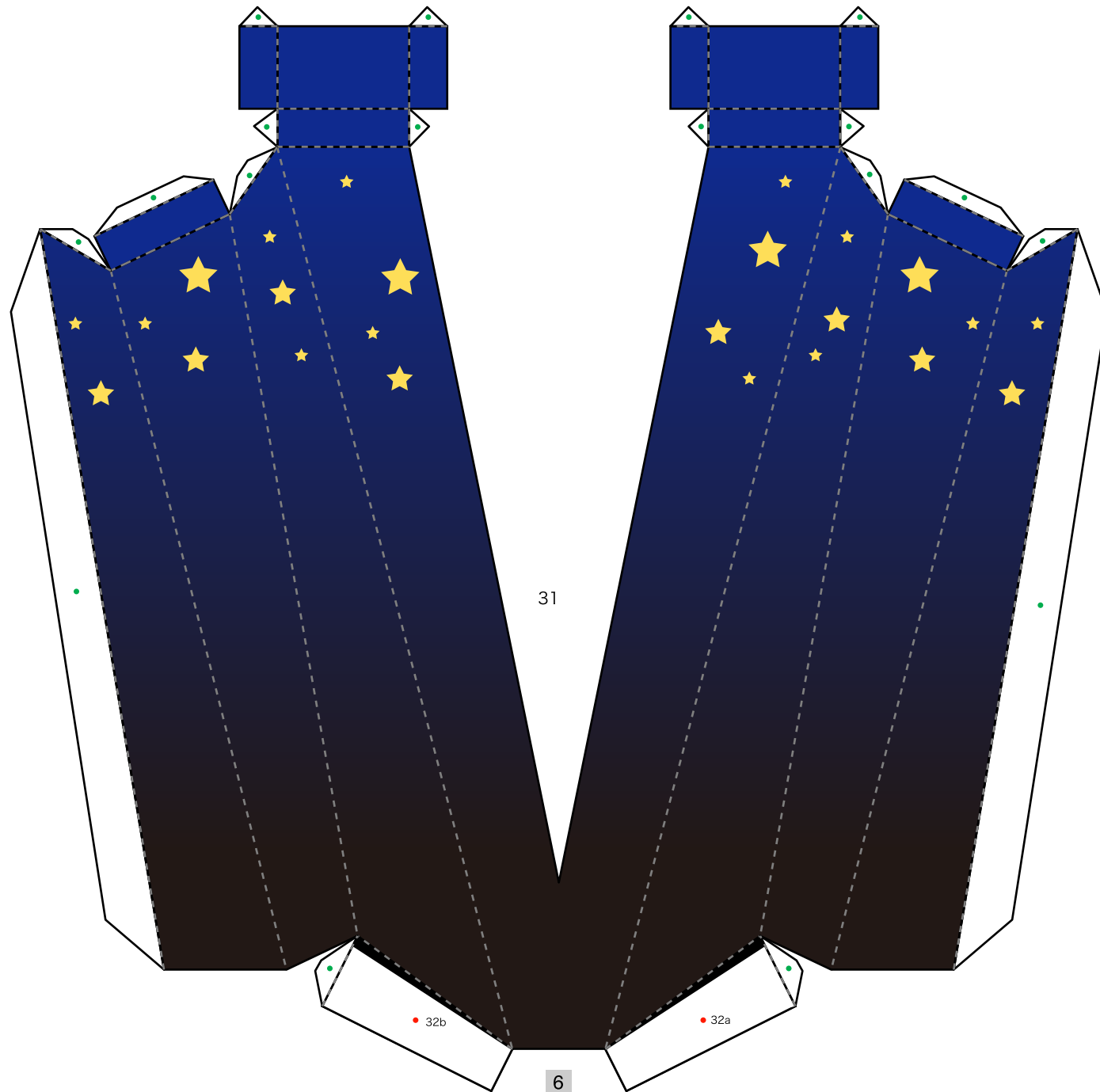
Santa Claus in his sleigh: Pattern

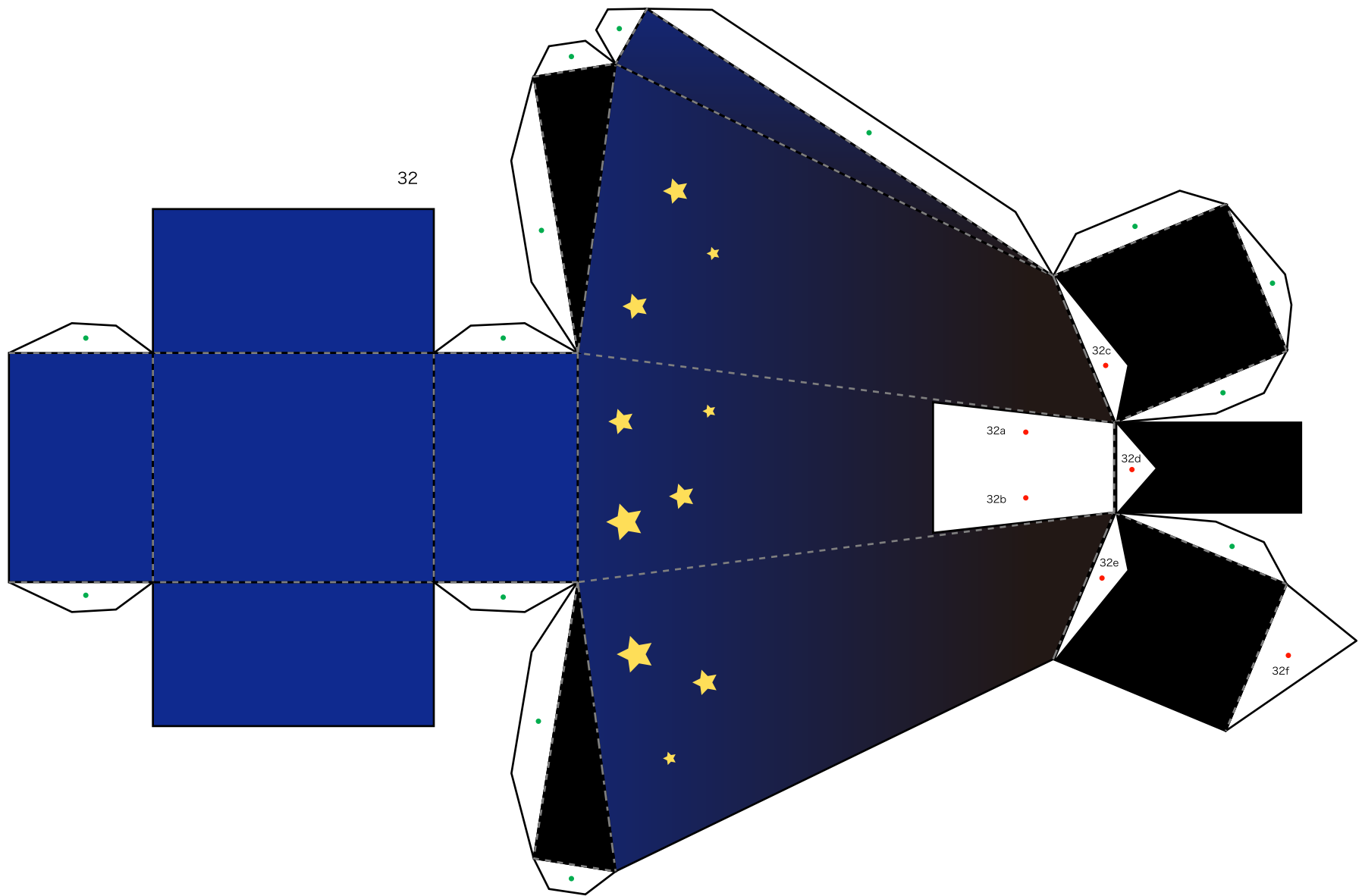
© Canon Inc. © T. Ichiyama



Santa Claus in his sleigh: Pattern

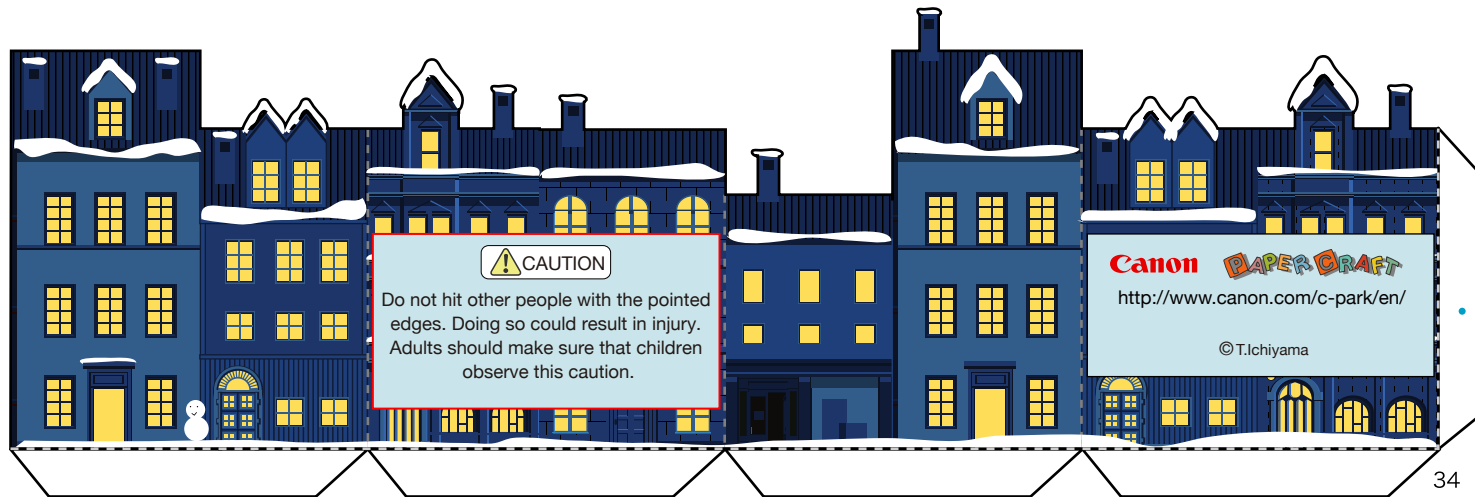
© Canon Inc. © T. Ichiyama







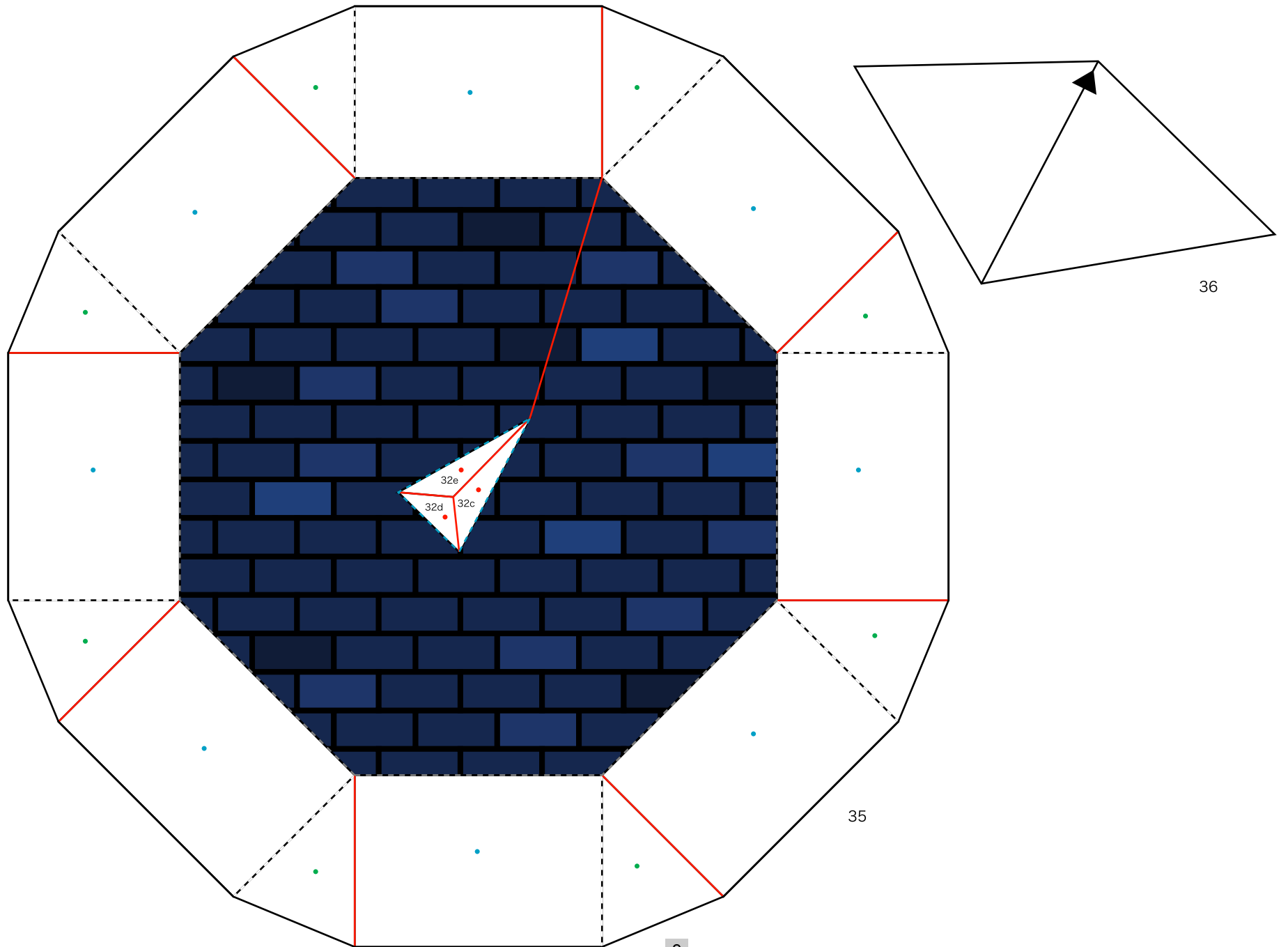
33



34

Santa Claus in his sleigh: Pattern

© Canon Inc. © T. Ichiyama



Santa Claus in his sleigh: Pattern

© Canon Inc. © T. Ichiyama

