

Jack-o'-lantern family (Halloween): Pattern

© Canon Inc. © A.A Inc.

Canon

PAPER CRAFT

<http://www.canon.com/c-park/en/>



View of completed model

Jack-o'-lantern family (Halloween)

Made by cutting holes to create any number of faces in a hollowed-out pumpkin, then lighting the pumpkin by placing a candle in the interior, the jack-o'-lantern has come to symbolize Halloween.

The name jack-o'-lantern comes from a mythological figure named Jack, who was said to wander about at night carrying a lantern, unable to enter either Heaven or Hell.

This family of jack-o'-lanterns is designed so that the small lanterns nested inside can be seen through the holes in the pumpkins.

■ Parts list (pattern): Eleven US letter sheets (No.1 to No.11)

■ No. of Parts: 25

*Build the model by carefully reading the Assembly Instructions, in the parts sheet page order.

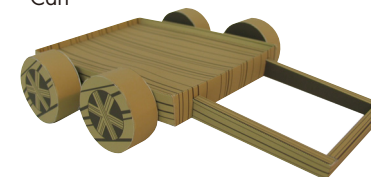
Front



Stand



Cart



Medium jack-o'-lantern



Large jack-o'-lantern

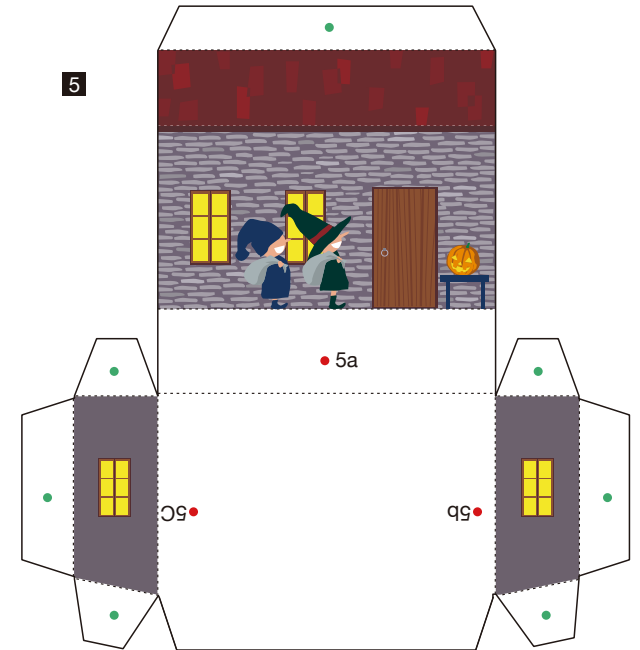
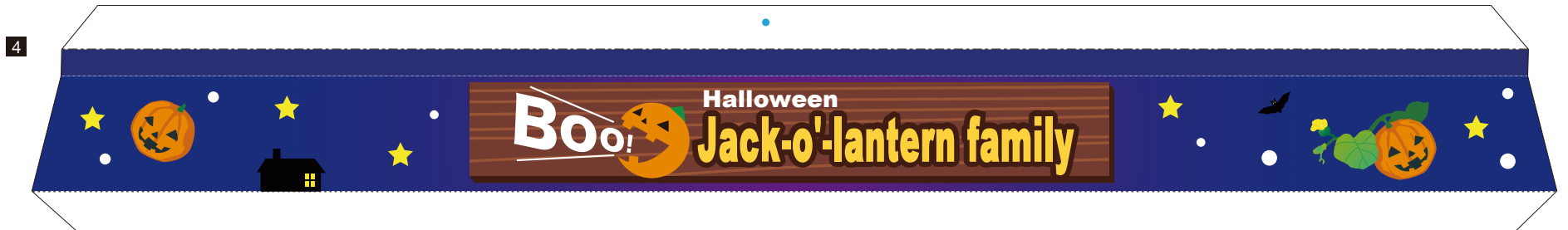
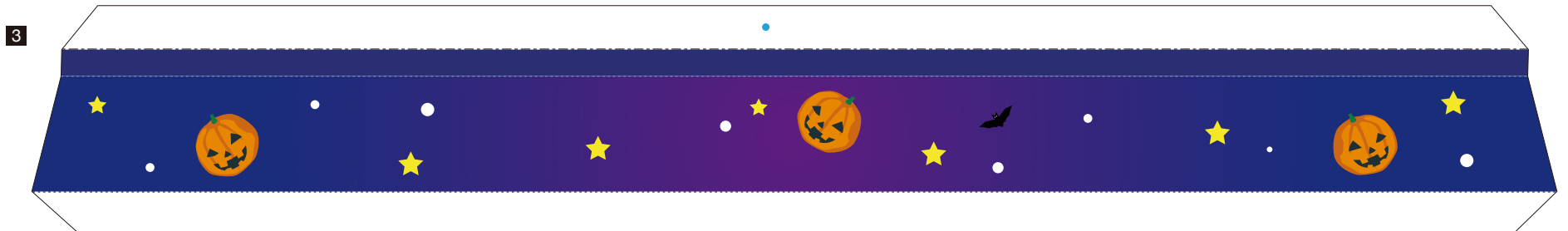
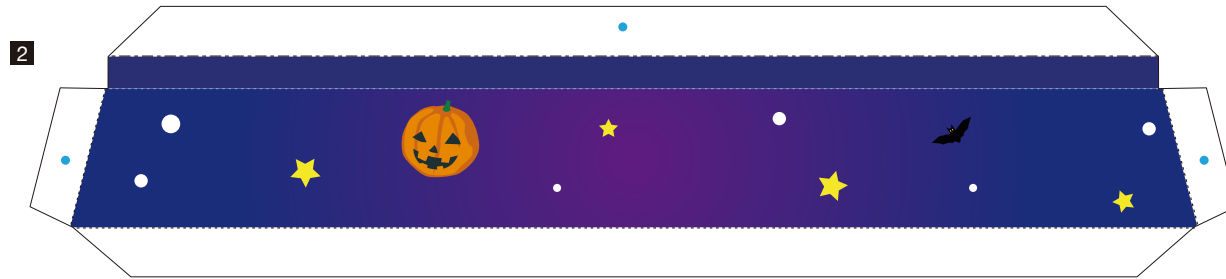
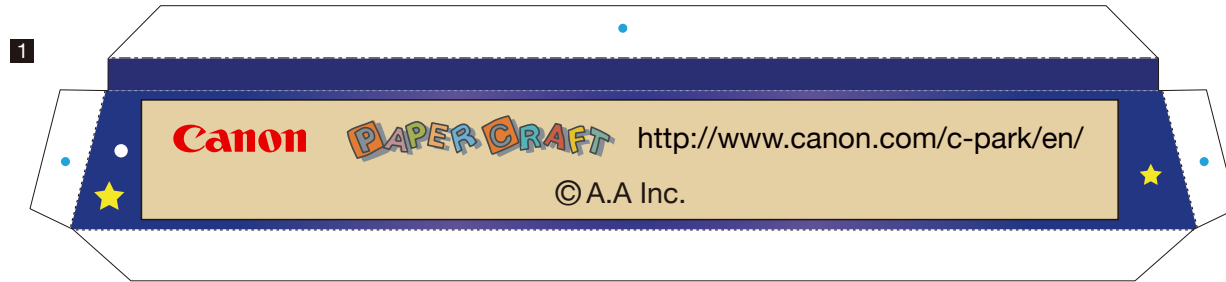


Small jack-o'-lantern



Jack-o'-lantern family (Halloween): Pattern

© Canon Inc. © A.A Inc.



Jack-o'-lantern family (Halloween): Pattern

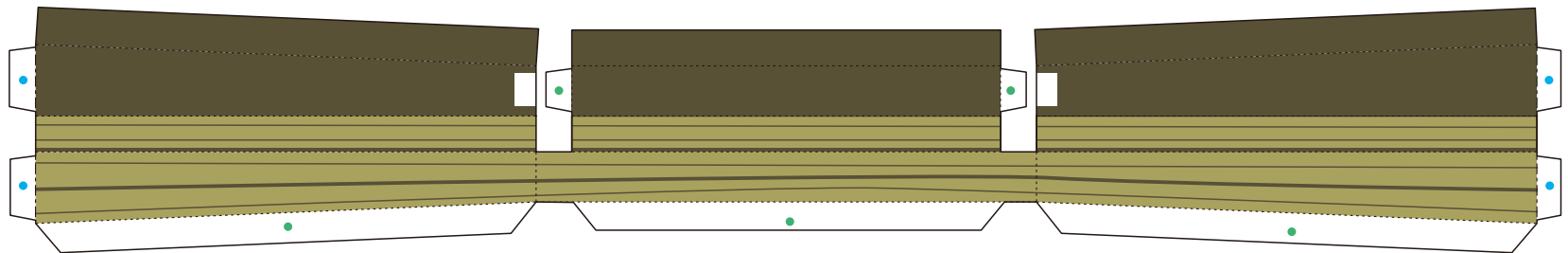
© Canon Inc. © A.A Inc.



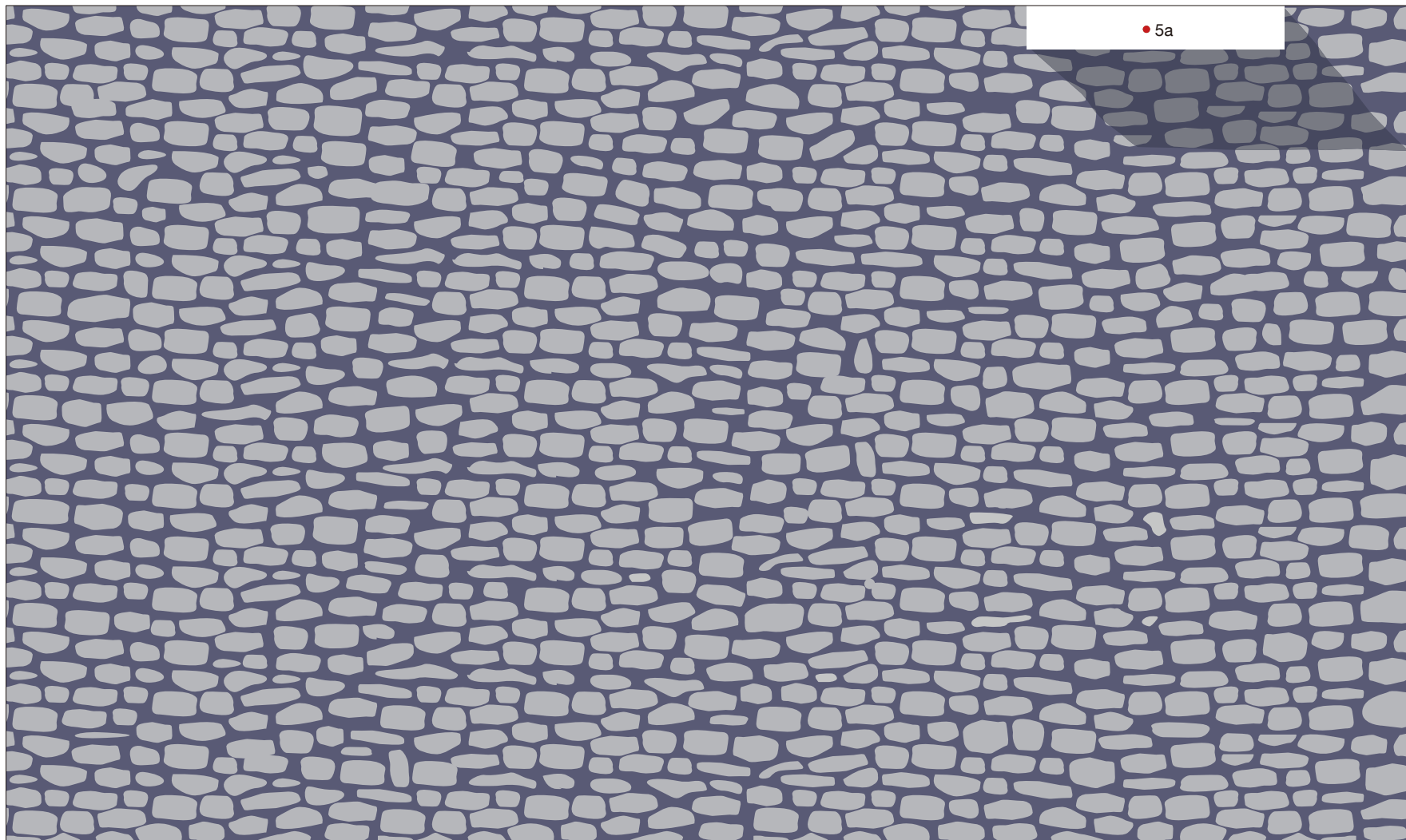
6



7

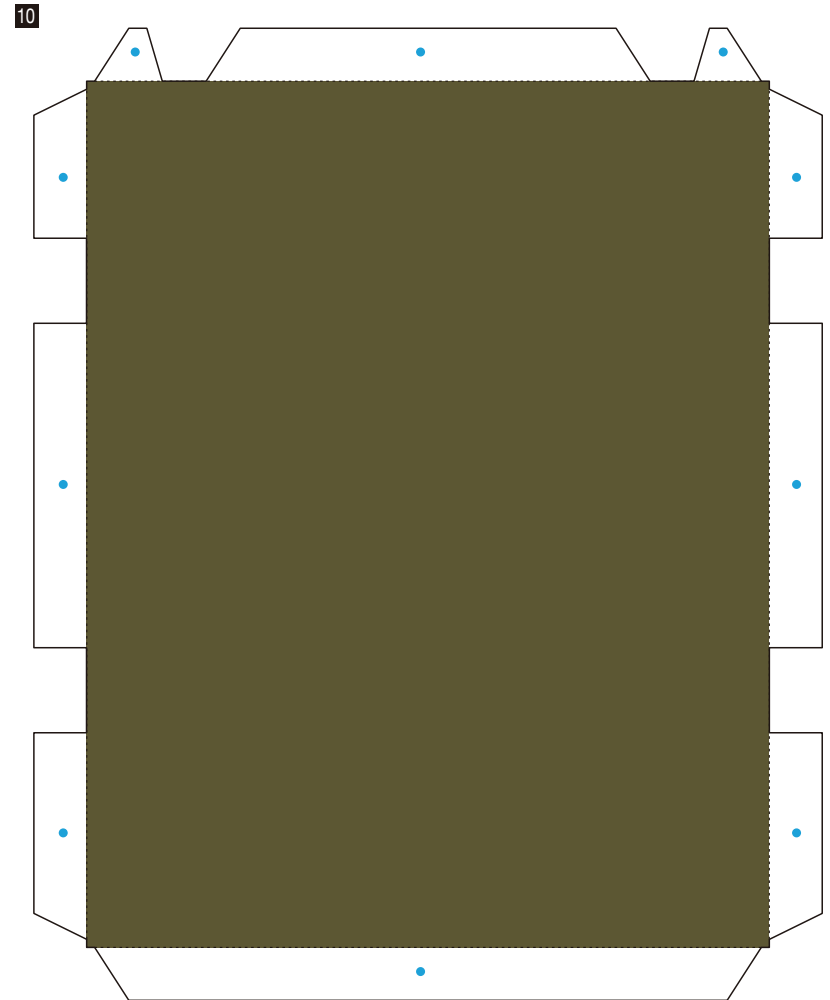
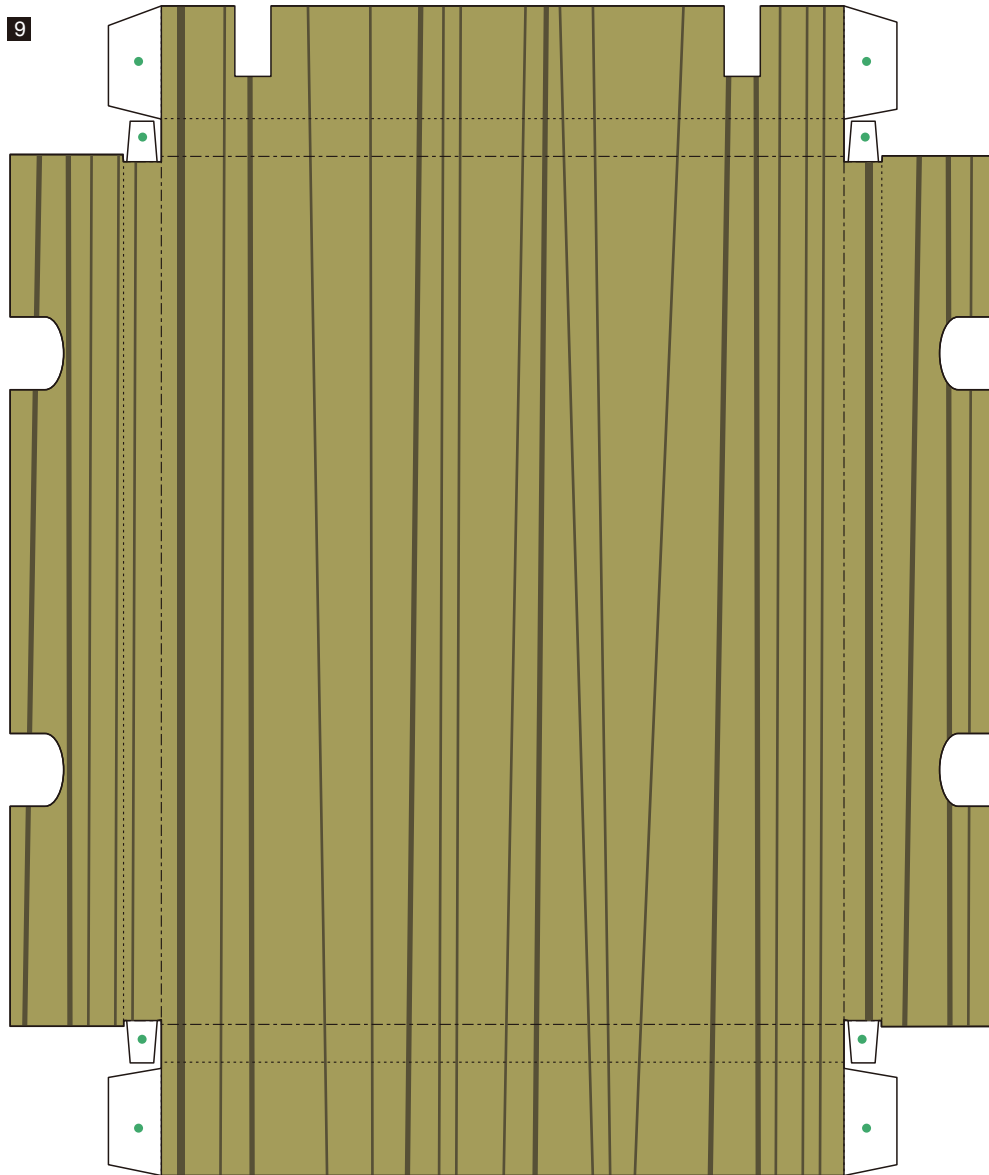


8



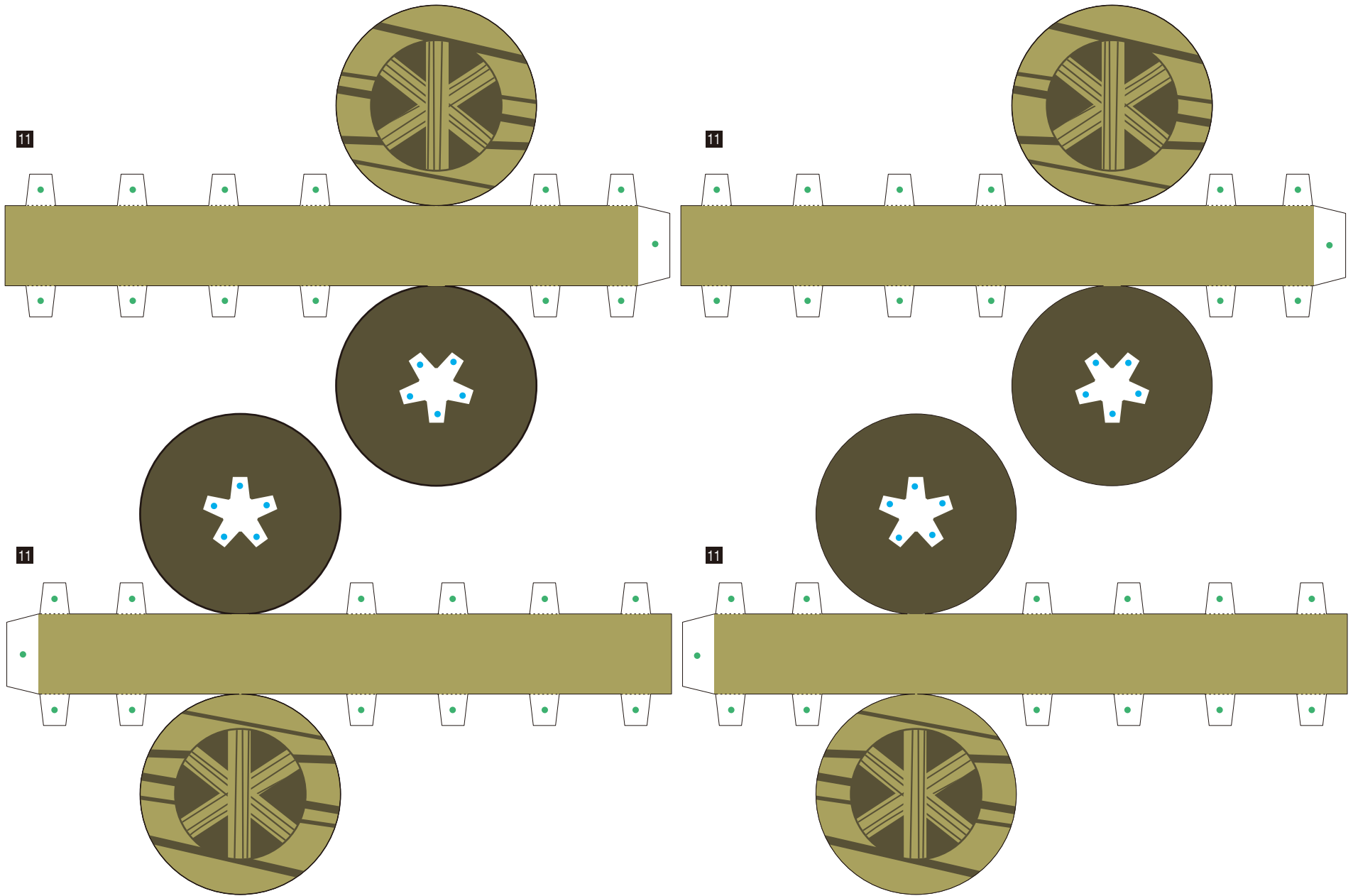
Jack-o'-lantern family (Halloween): Pattern

© Canon Inc. © A.A Inc.



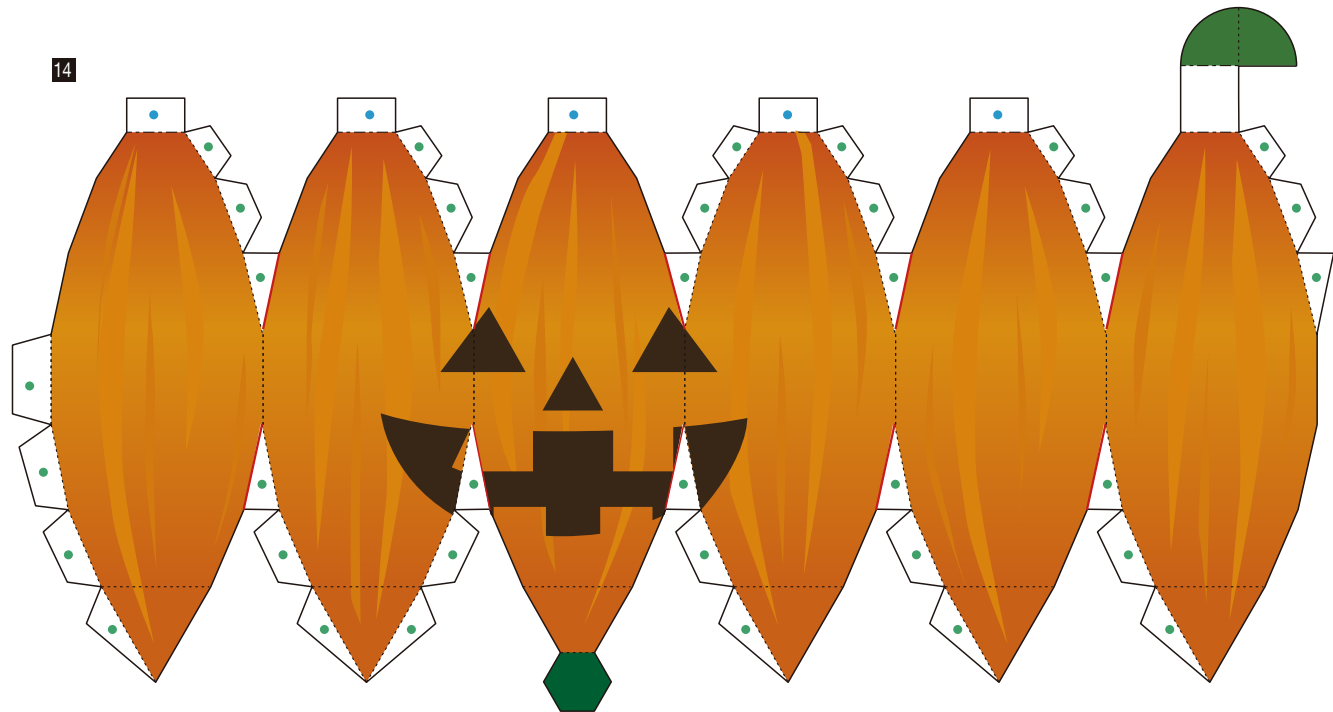
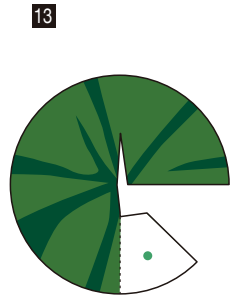
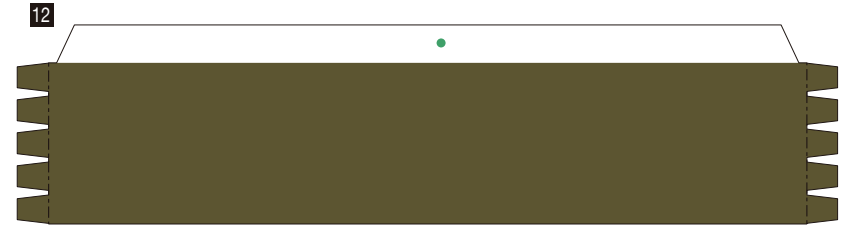
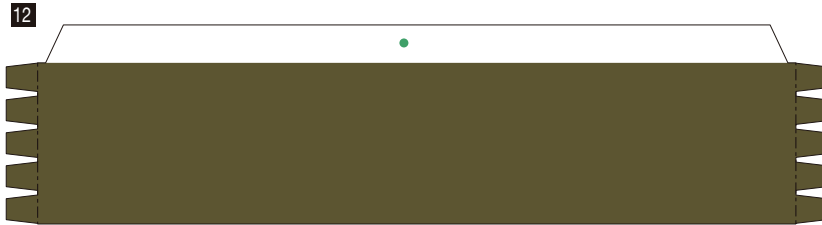
Jack-o'-lantern family (Halloween): Pattern

© Canon Inc. © A.A Inc.



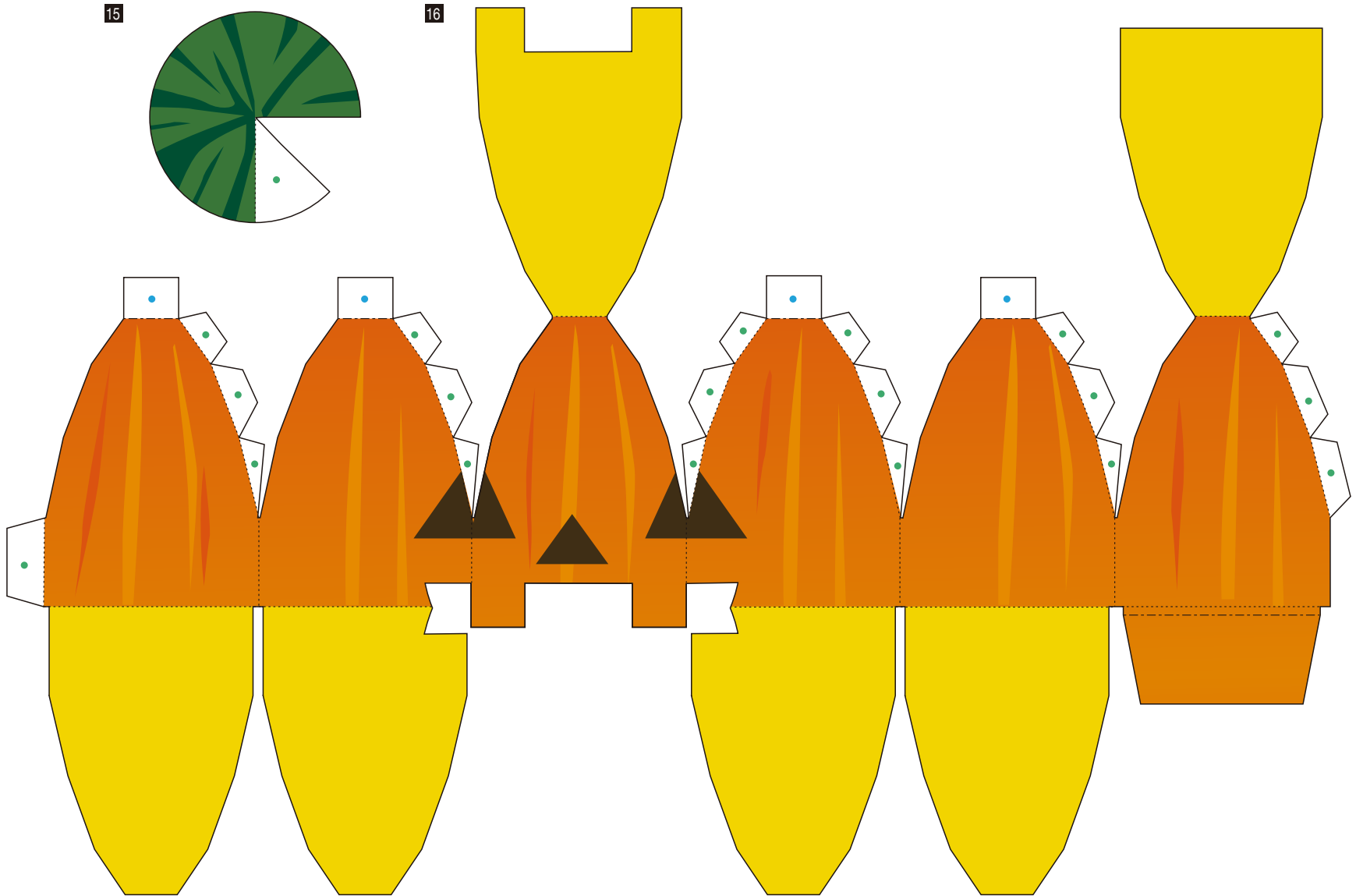
Jack-o'-lantern family (Halloween): Pattern

© Canon Inc. © A.A Inc.

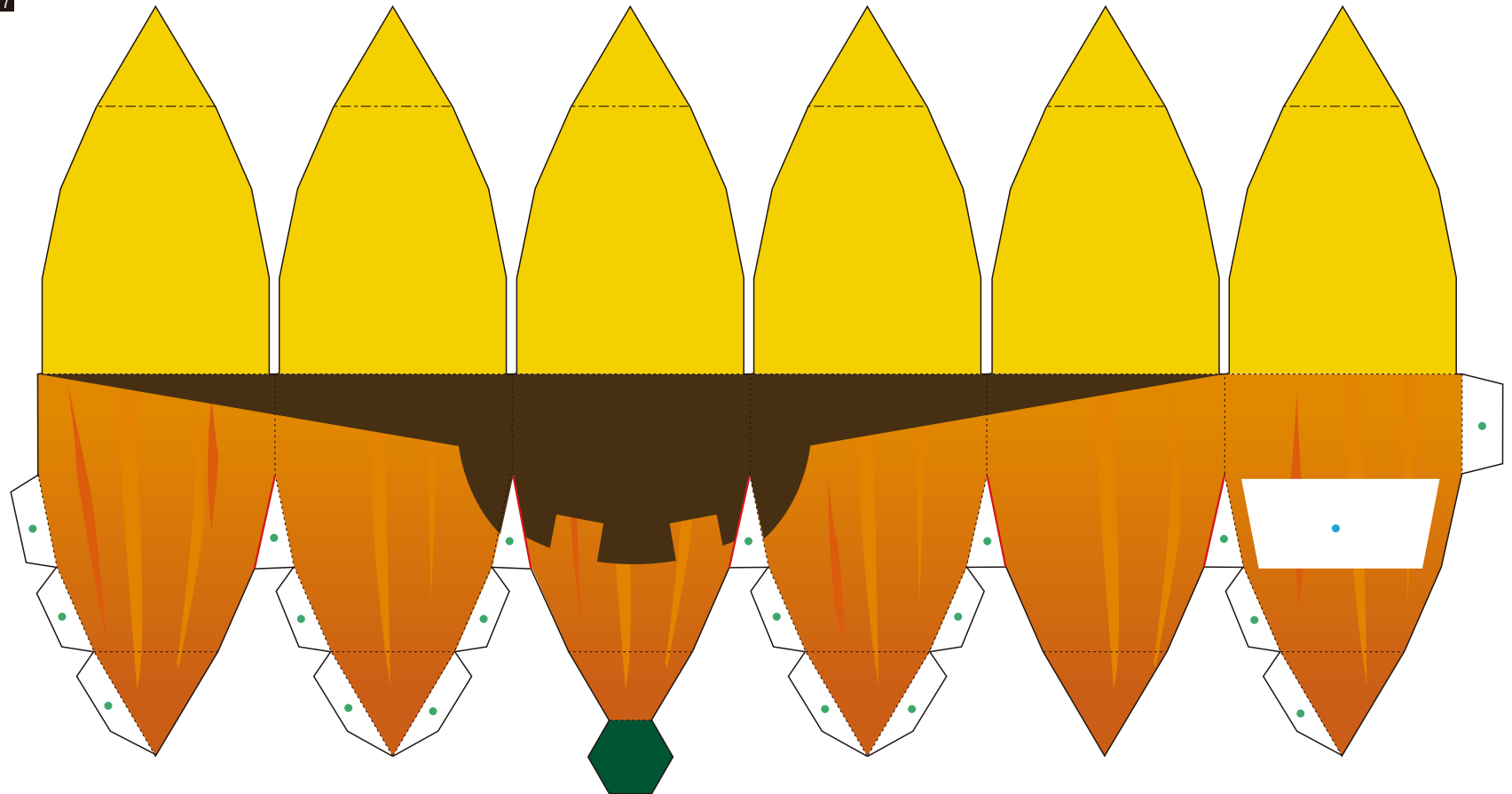


Jack-o'-lantern family (Halloween): Pattern

© Canon Inc. © A.A Inc.



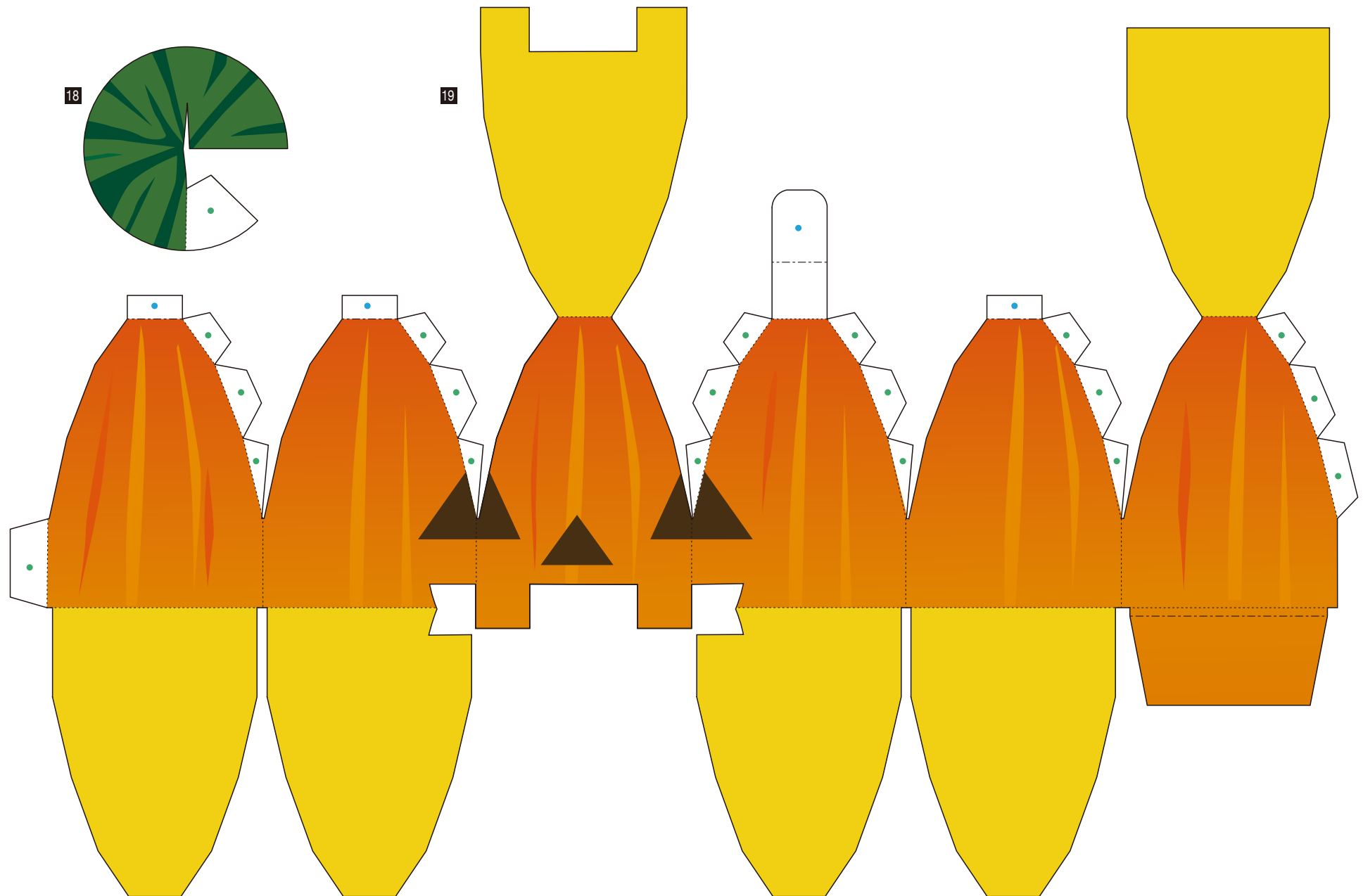
17



Jack-o'-lantern family (Halloween): Pattern

© Canon Inc. © A.A Inc.

Canon

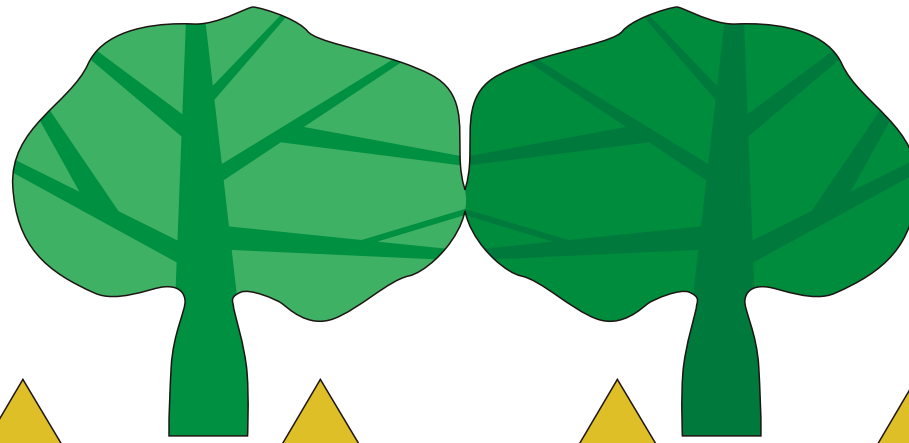


Jack-o'-lantern family (Halloween): Pattern

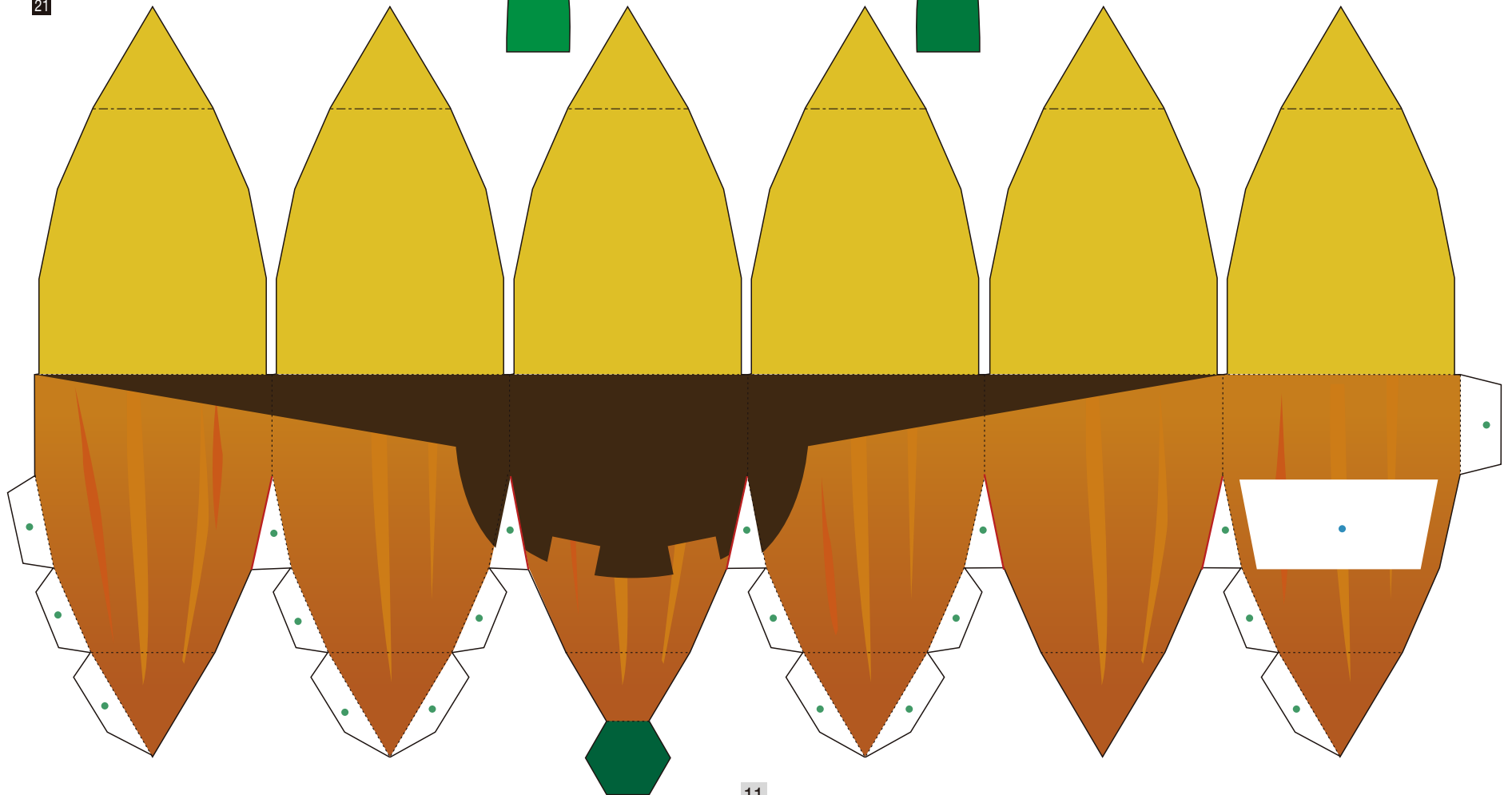
© Canon Inc. © A.A Inc.



20



21



11