

PAPER CRAFT

<http://www.canon.com/c-park/en/>



View of completed model

Jack-o'-lantern family (Halloween)

Made by cutting holes to create any number of faces in a hollowed-out pumpkin, then lighting the pumpkin by placing a candle in the interior, the jack-o'-lantern has come to symbolize Halloween.

The name jack-o'-lantern comes from a mythological figure named Jack, who was said to wander about at night carrying a lantern, unable to enter either Heaven or Hell.

This family of jack-o'-lanterns is designed so that the small lanterns nested inside can be seen through the holes in the pumpkins.

■ Parts list (pattern): Eleven A4 sheets (No.1 to No.11)

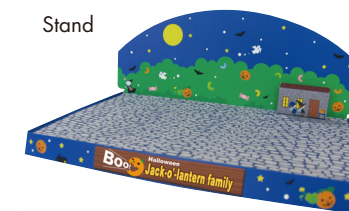
■ No. of Parts: 25

*Build the model by carefully reading the Assembly Instructions, in the parts sheet page order.

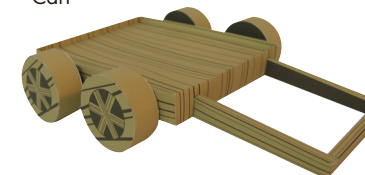
Front



Stand

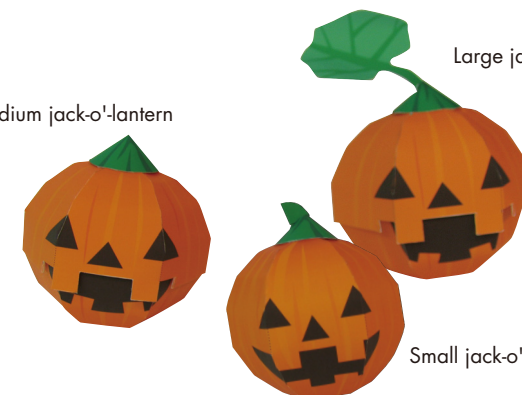


Cart



Large jack-o'-lantern

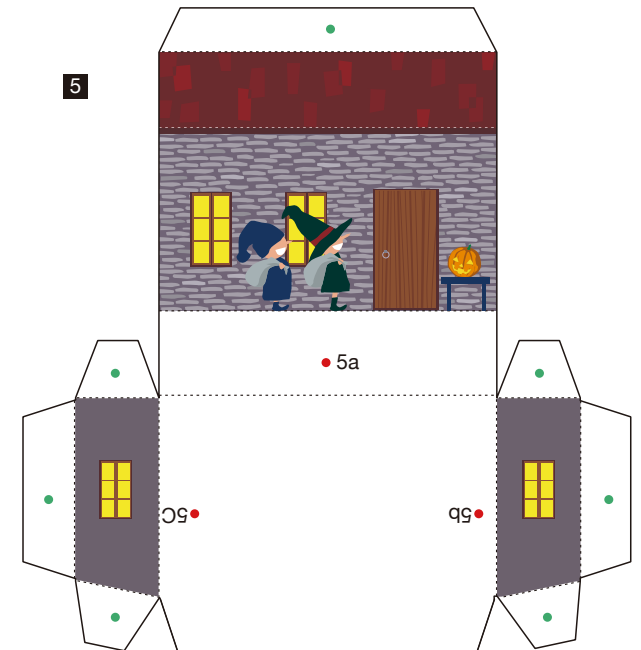
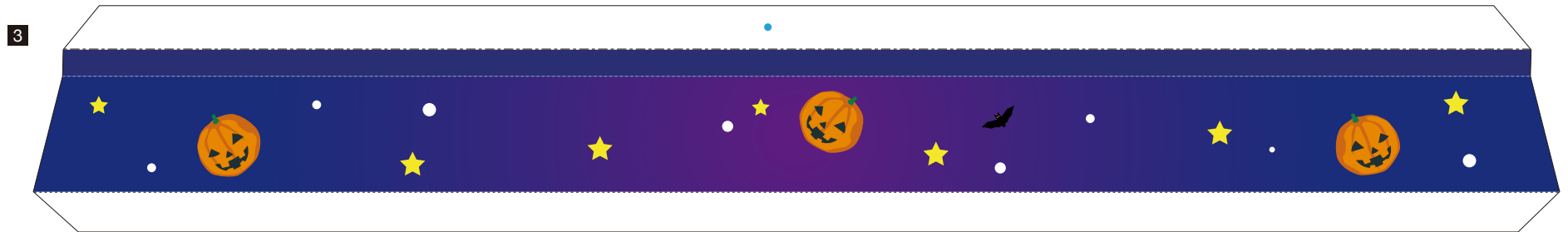
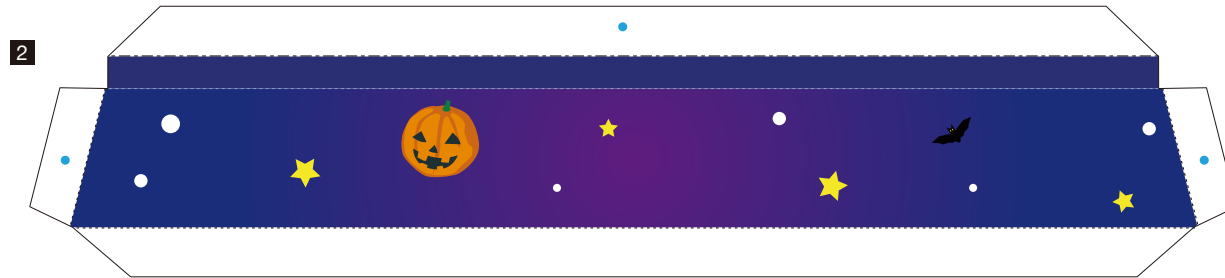
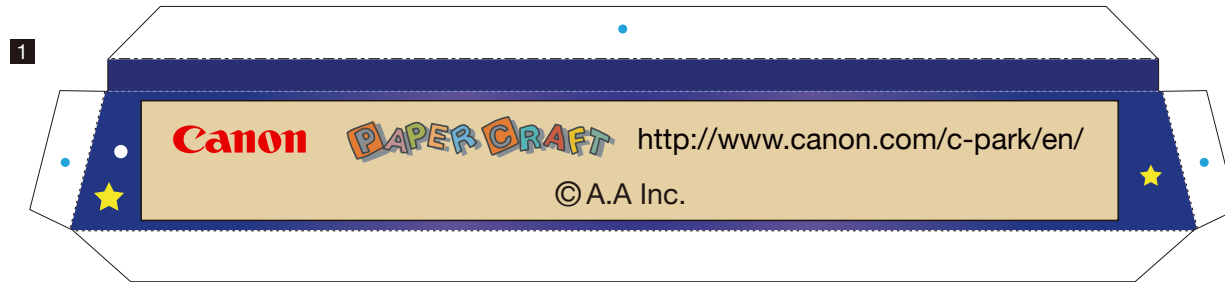
Medium jack-o'-lantern



Small jack-o'-lantern

Jack-o'-lantern family (Halloween): Pattern

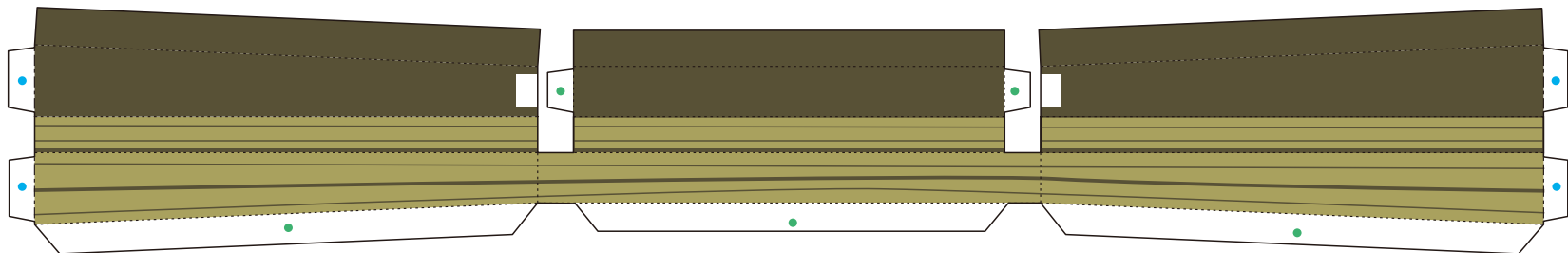
© Canon Inc. © A.A Inc.



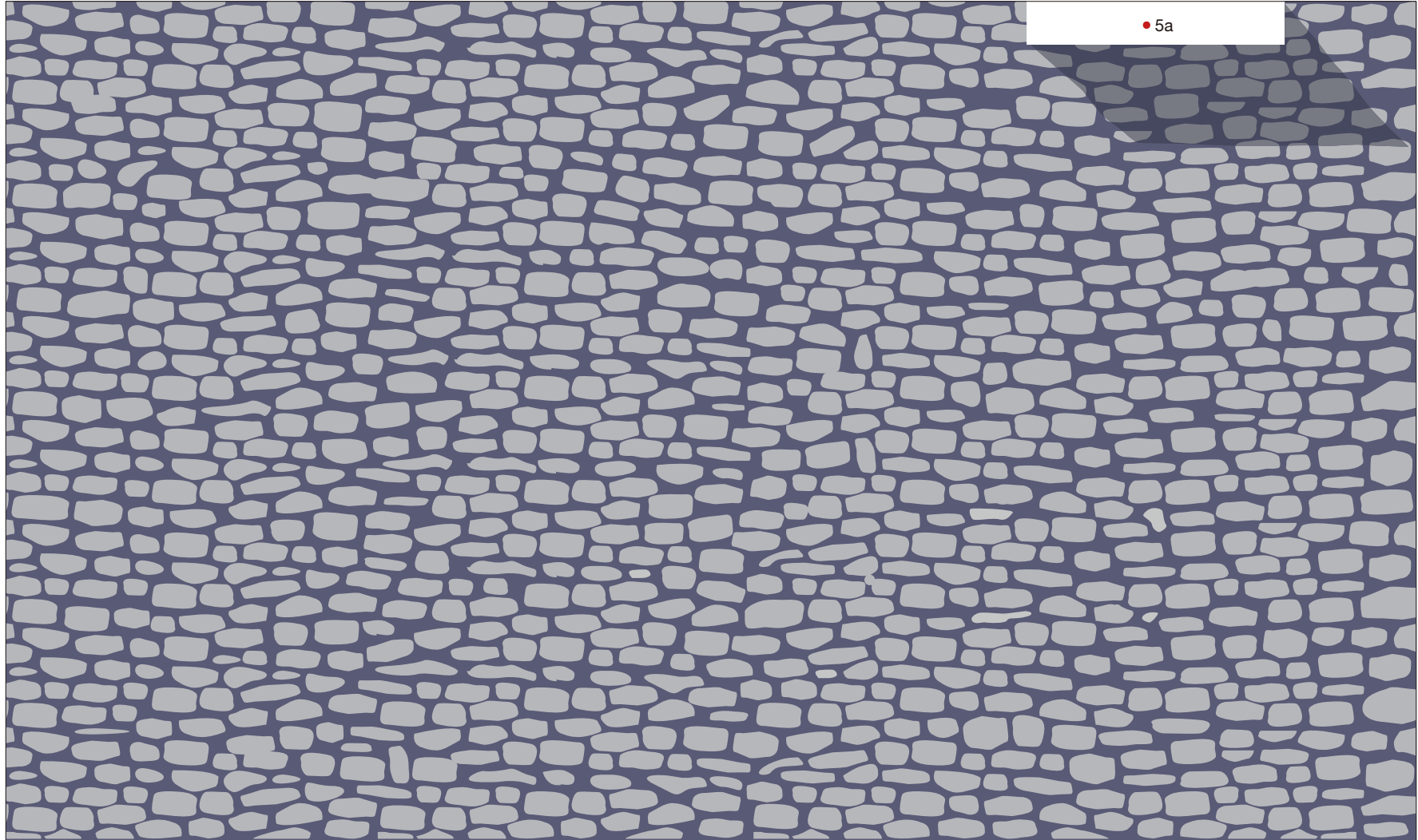
6

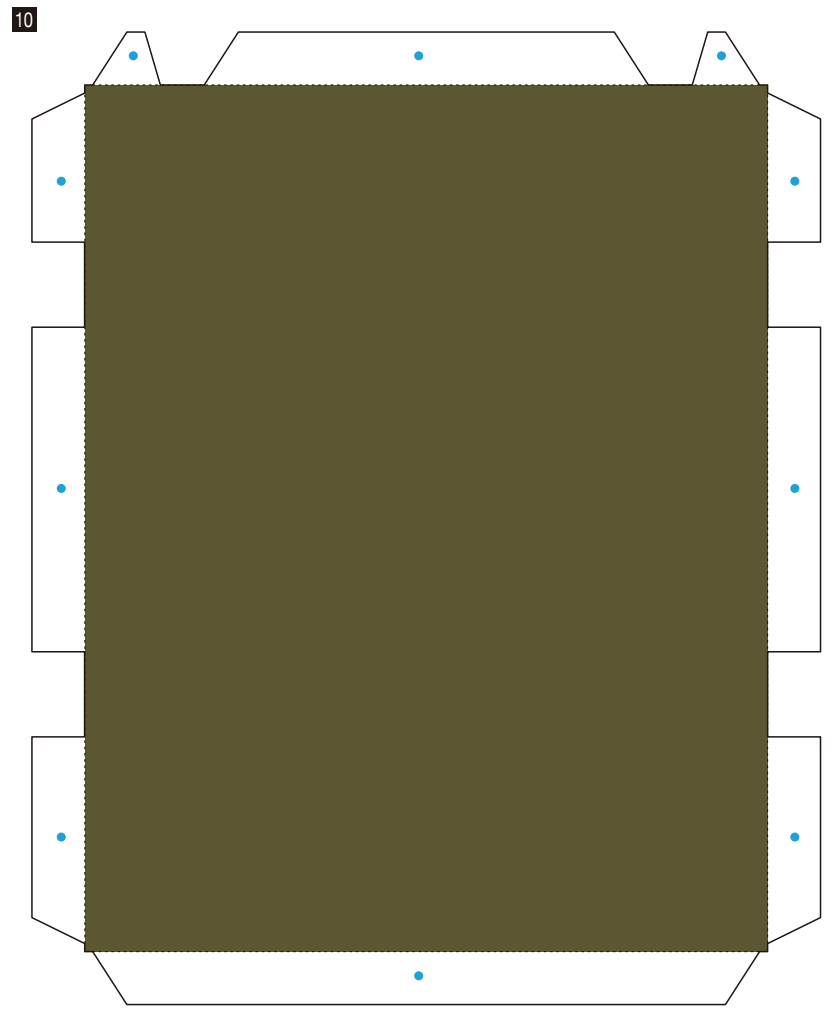
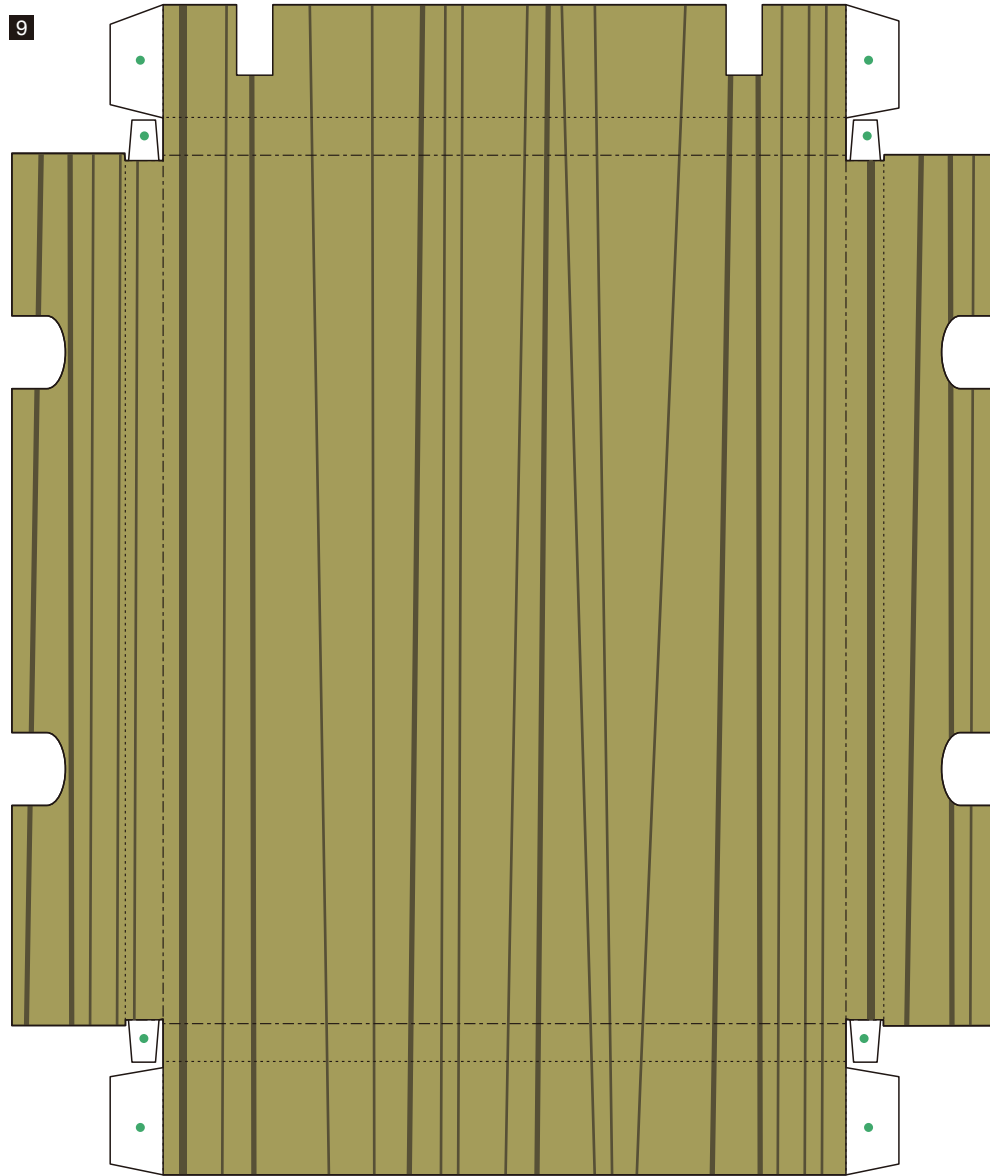


7



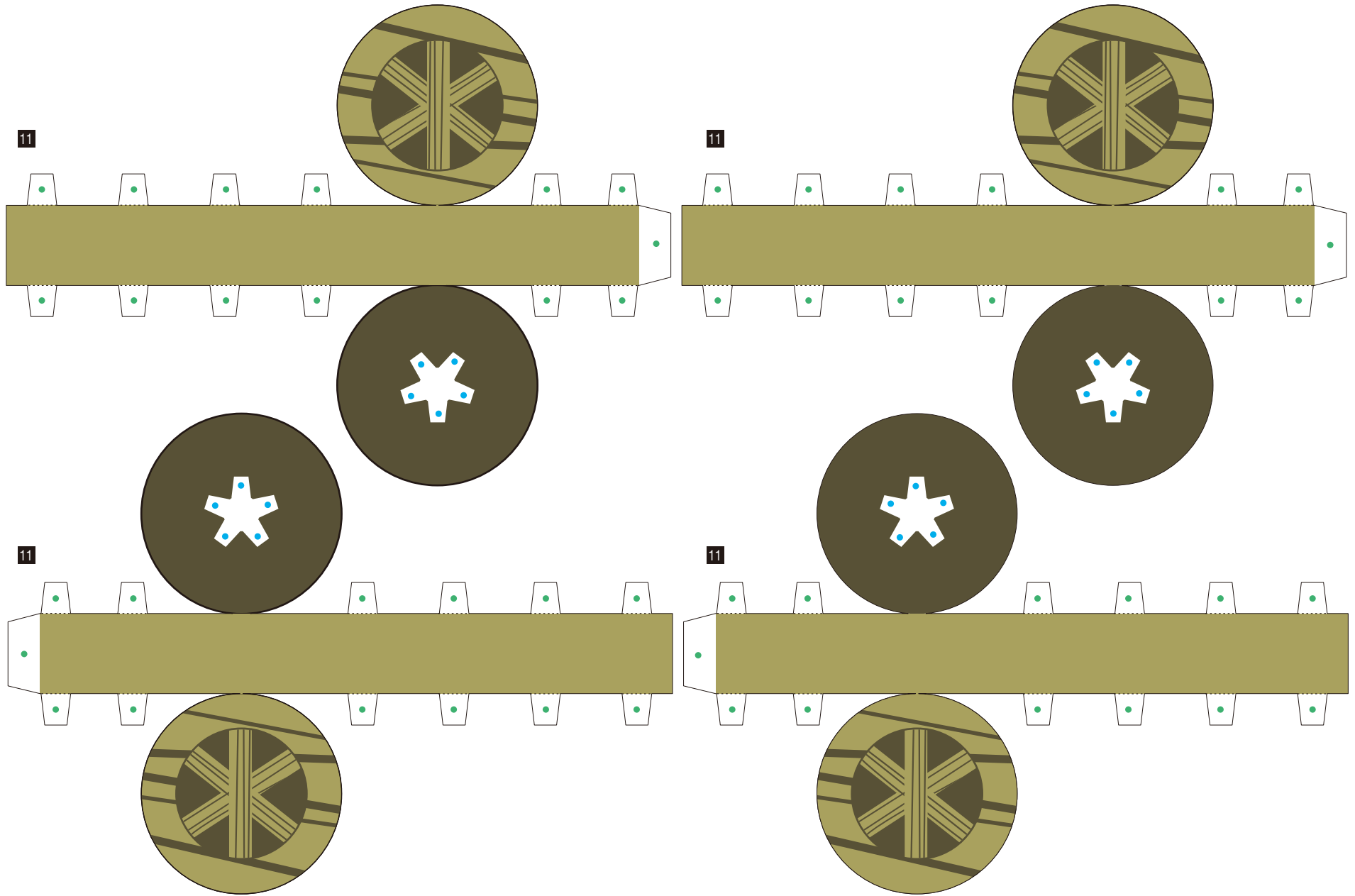
8





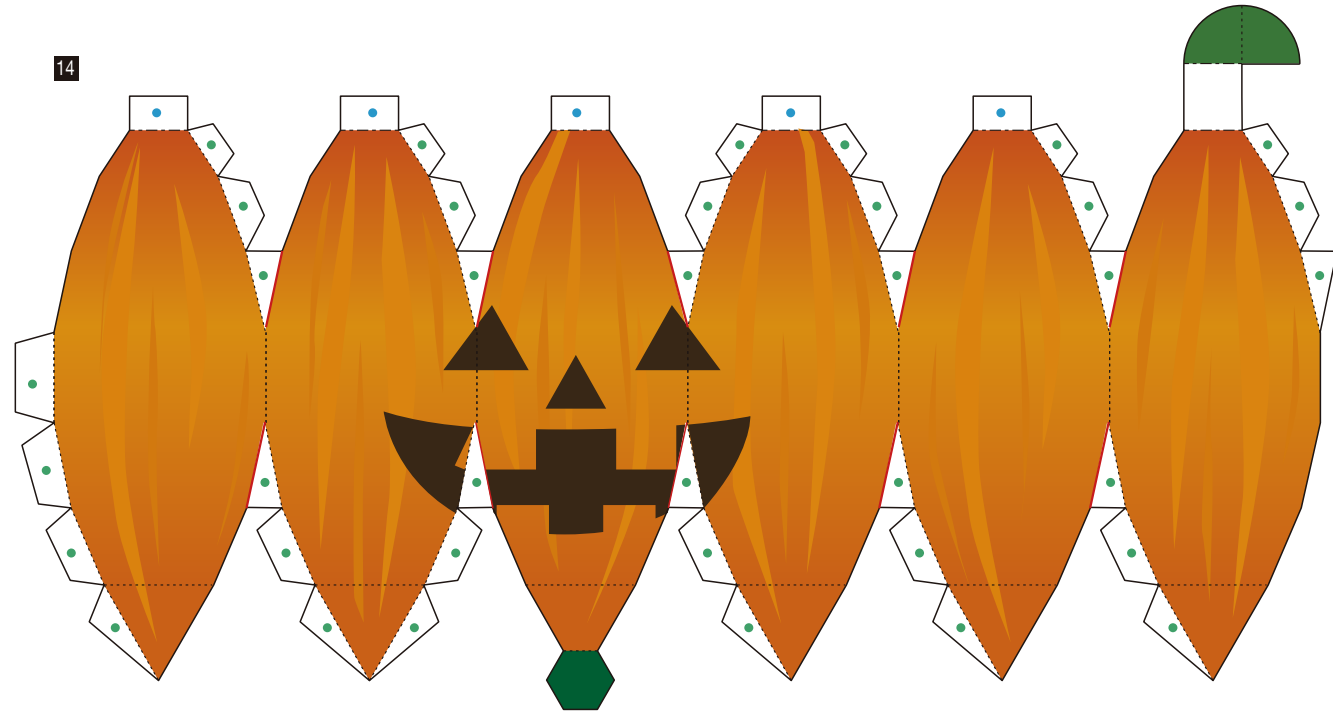
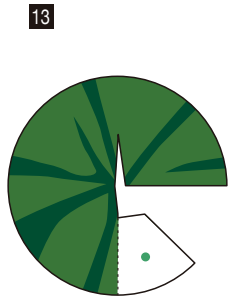
Jack-o'-lantern family (Halloween): Pattern

© Canon Inc. © A.A Inc.



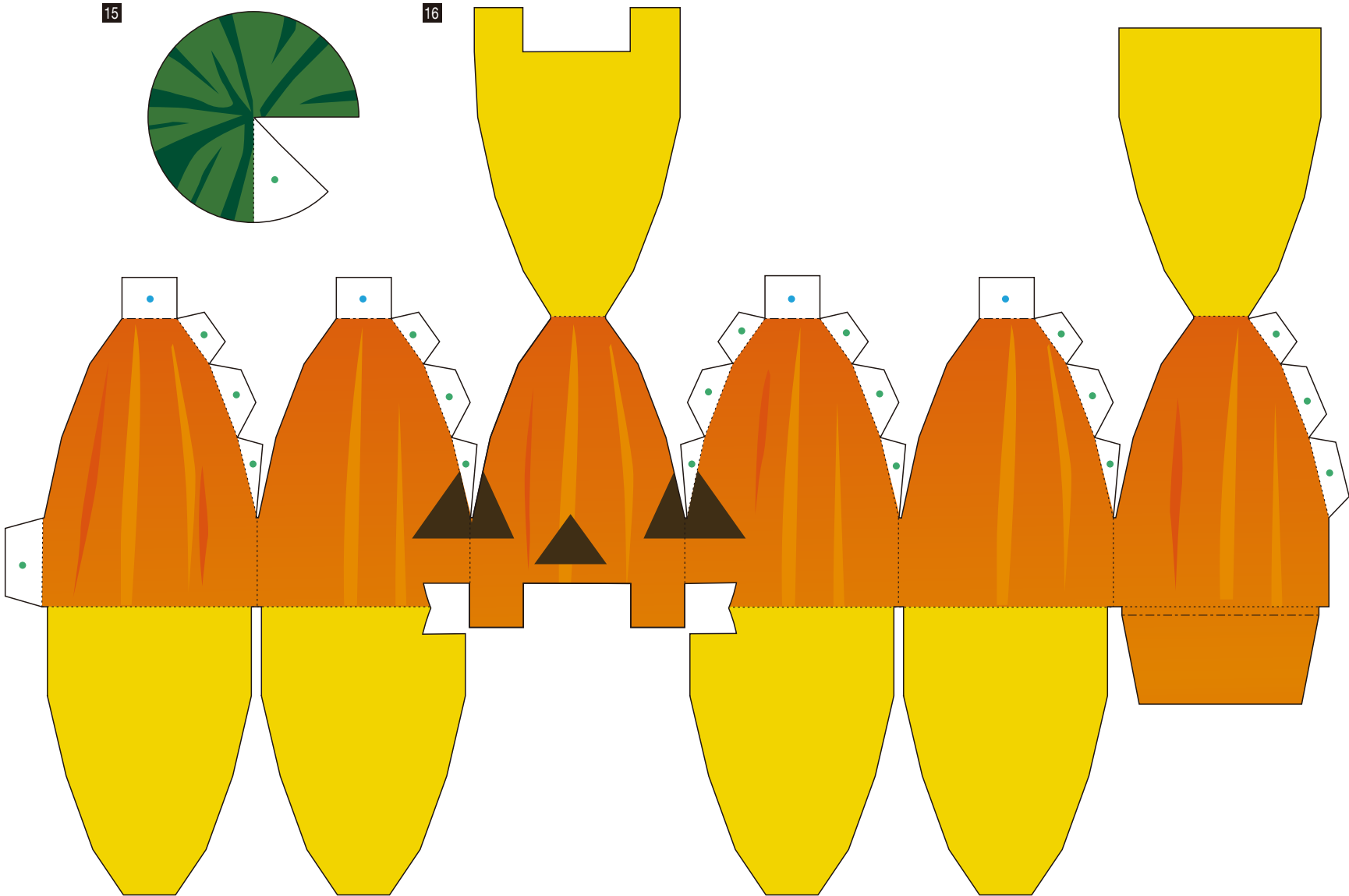
Jack-o'-lantern family (Halloween): Pattern

© Canon Inc. © A.A Inc.

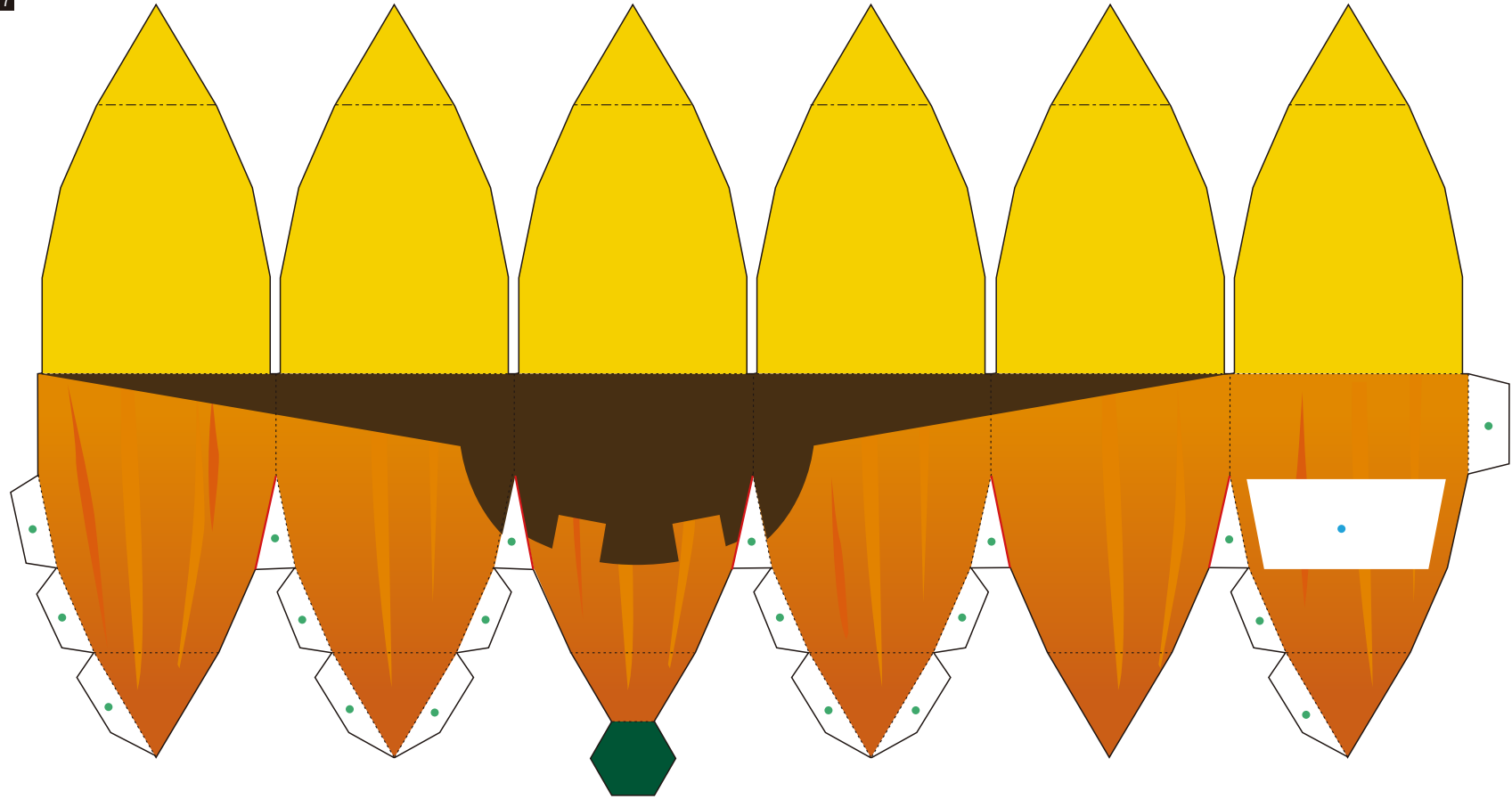


Jack-o'-lantern family (Halloween): Pattern

© Canon Inc. © A.A Inc.

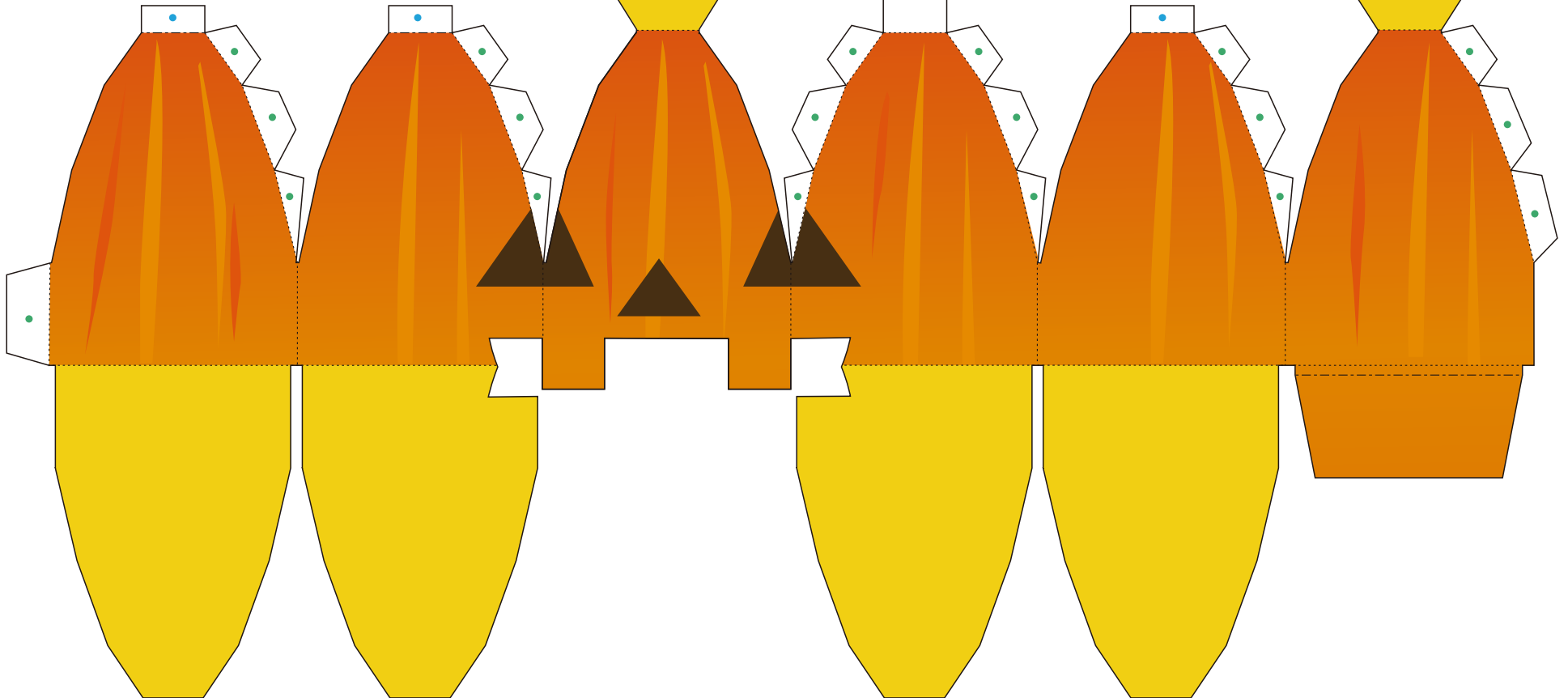
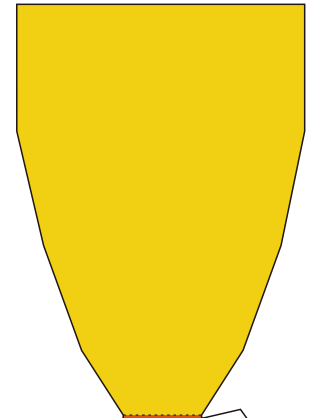
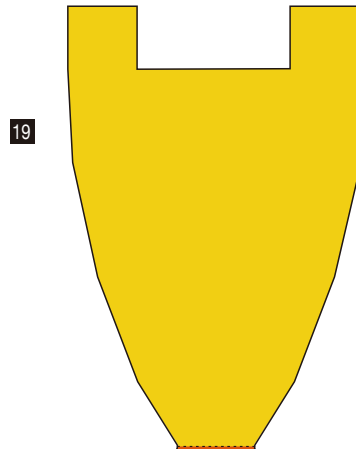
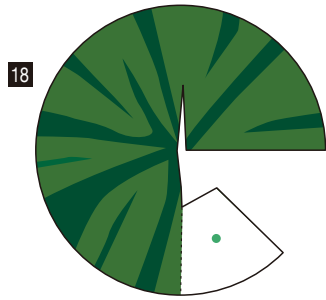


17

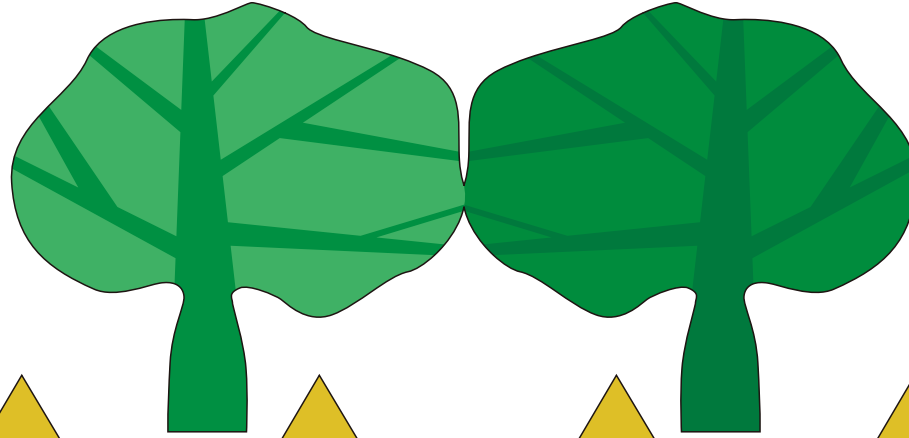


Jack-o'-lantern family (Halloween): Pattern

© Canon Inc. © A.A Inc.



20



21

