



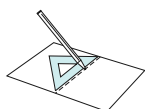
\*Use a 4 x 6 size (102mm x 152mm) photo for the frame inside.

**Instructions** Pattern: 6 sheets Assembly Instructions: 1 sheet Number of parts: 16



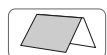
**You will need**

Scissors, glue, ruler, a used ball-point pen



**Assembly Tip**

Trace along the folds with a ruler and a used pen (no ink) to get a sharper, easier fold.



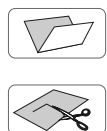
**Mountain fold**  
(dotted line)

Make a mountain fold



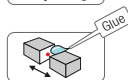
**Valley fold**  
(dashed and dotted line)

Make a valley fold



**Scissors line**  
(solid line)

Cut out



**Cut in Line**  
(solid line)

Cut in

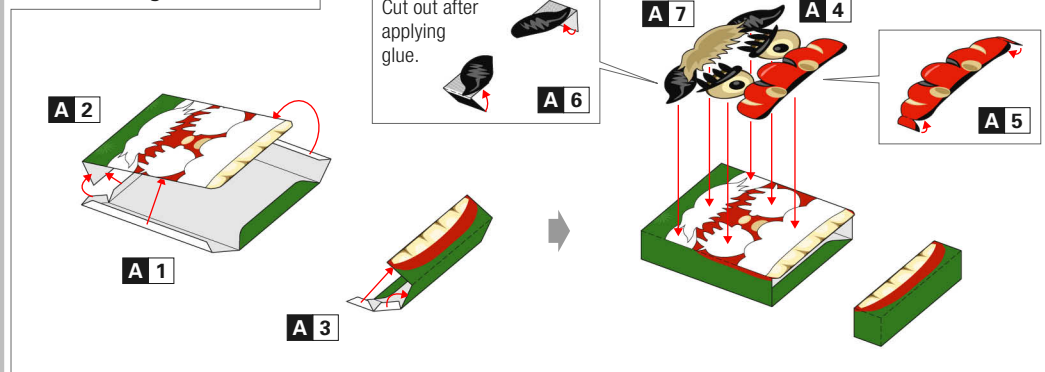
**Glue tab**

Attach

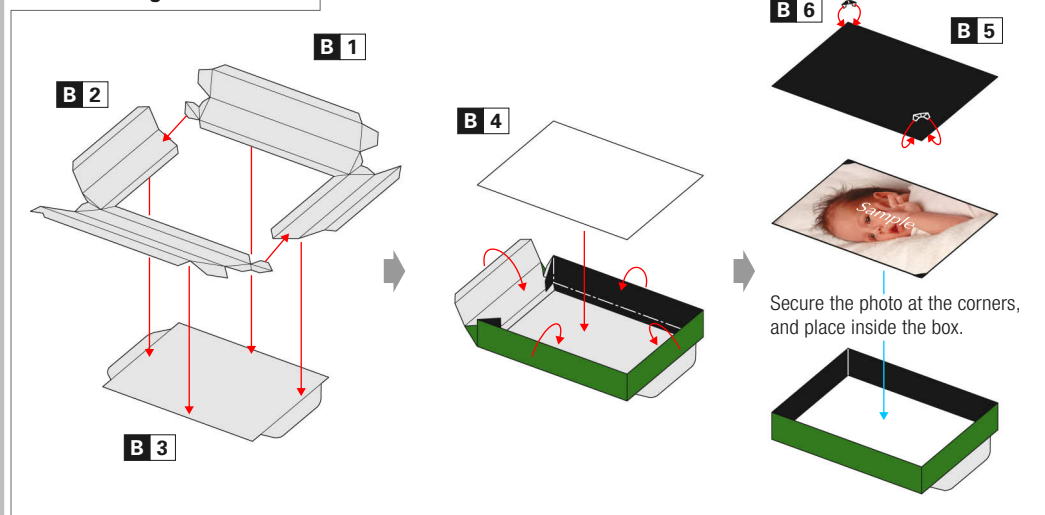


**[Caution]** Glue, scissors and other tools may be dangerous to young children, so be sure to keep them out of the reach of young children.

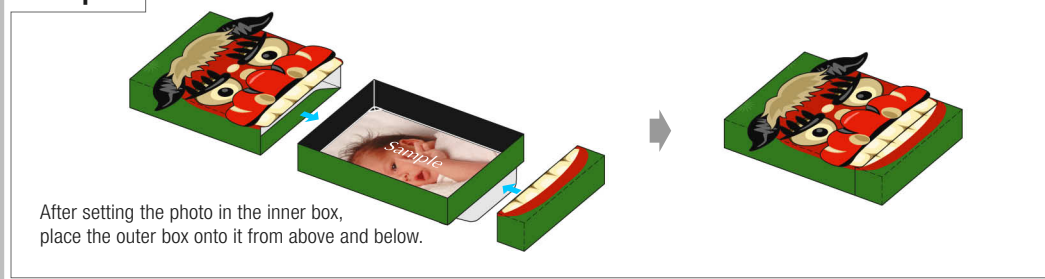
## 1. Assembling the outer box



## 2. Assembling the inner box

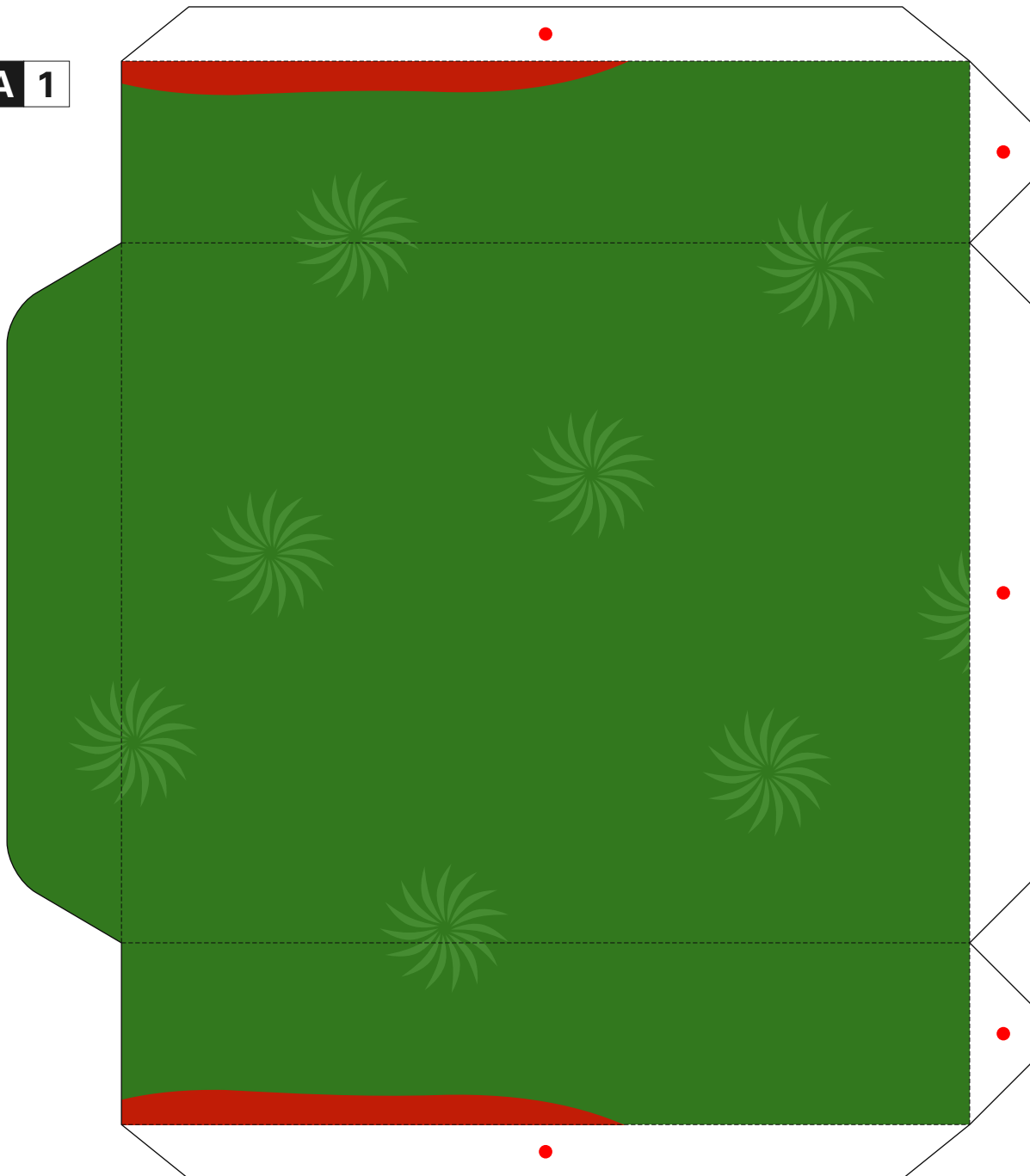


## 3. Complete

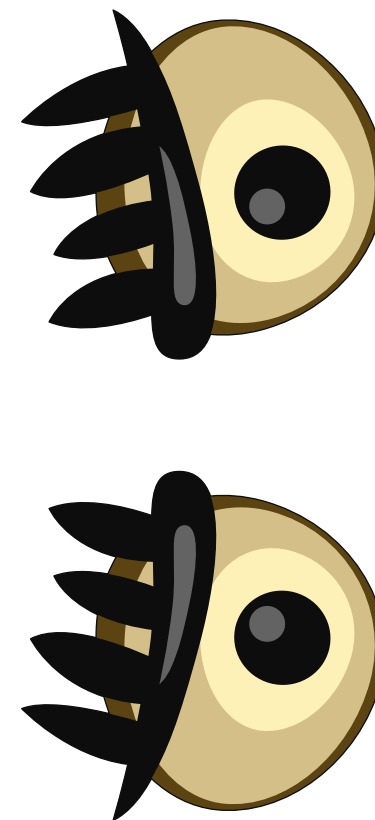


After setting the photo in the inner box, place the outer box onto it from above and below.

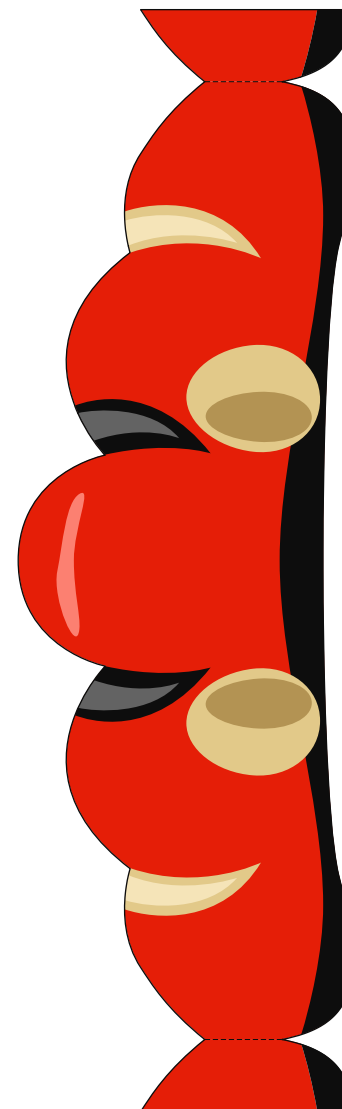
A 1



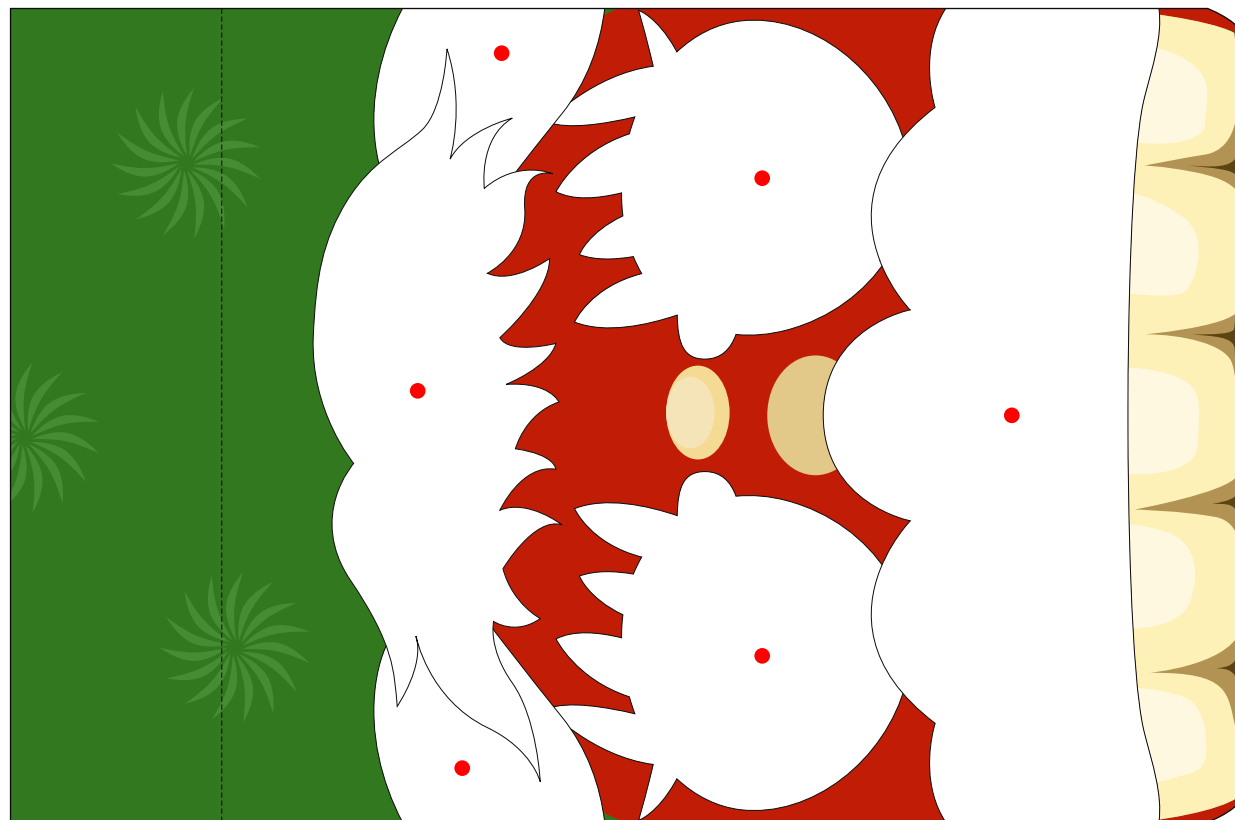
A 4



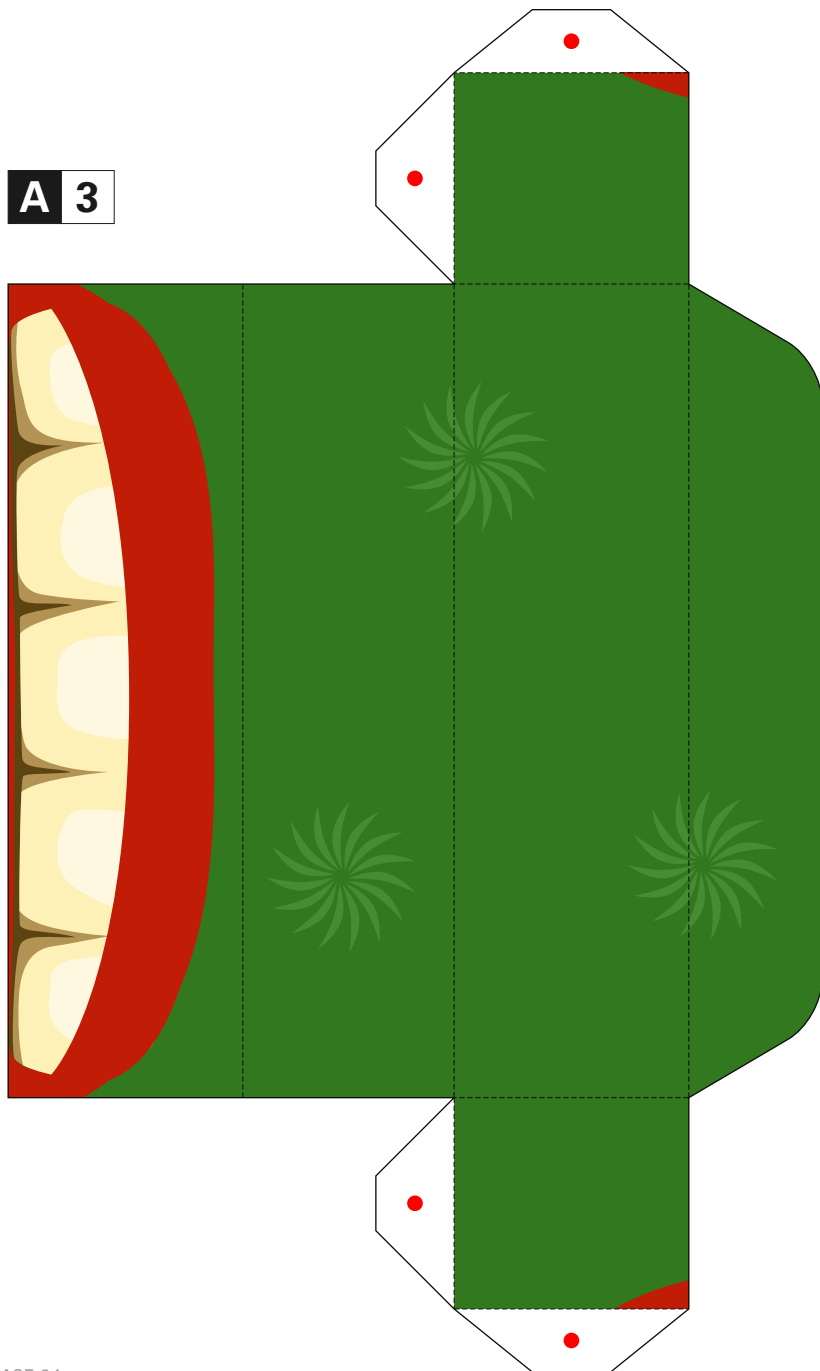
A 5



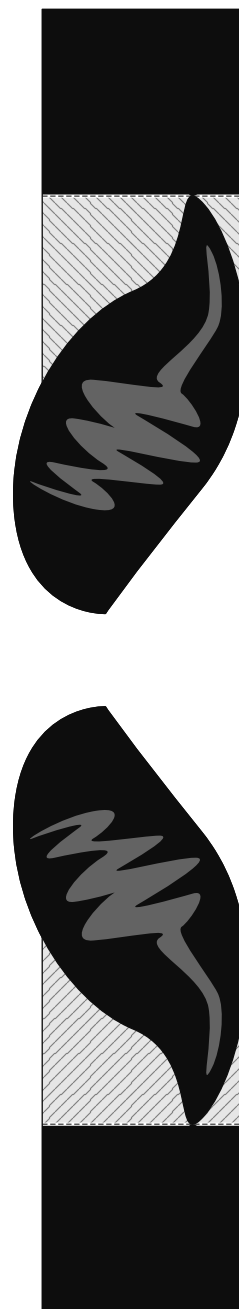
A 2



A 3

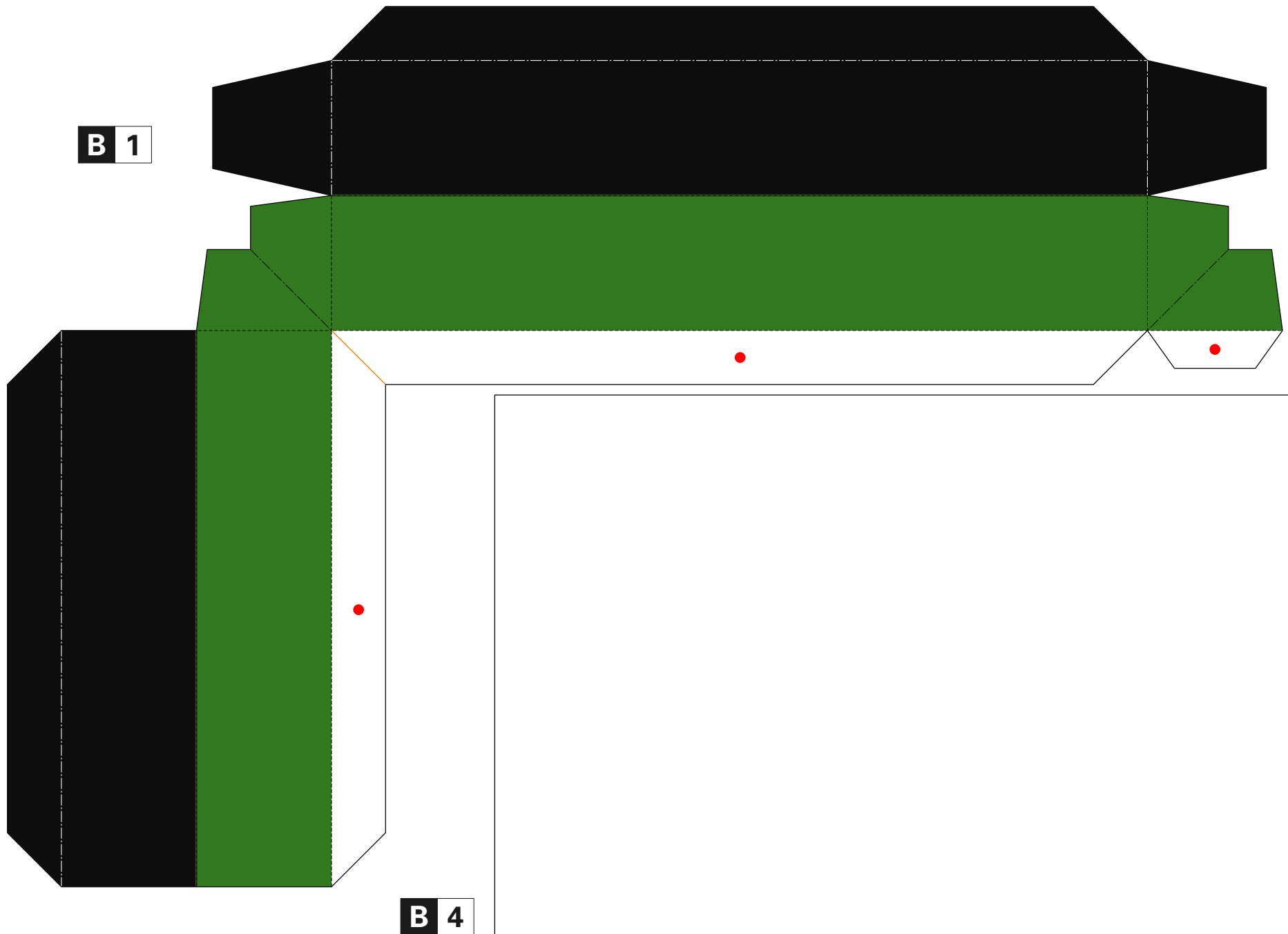


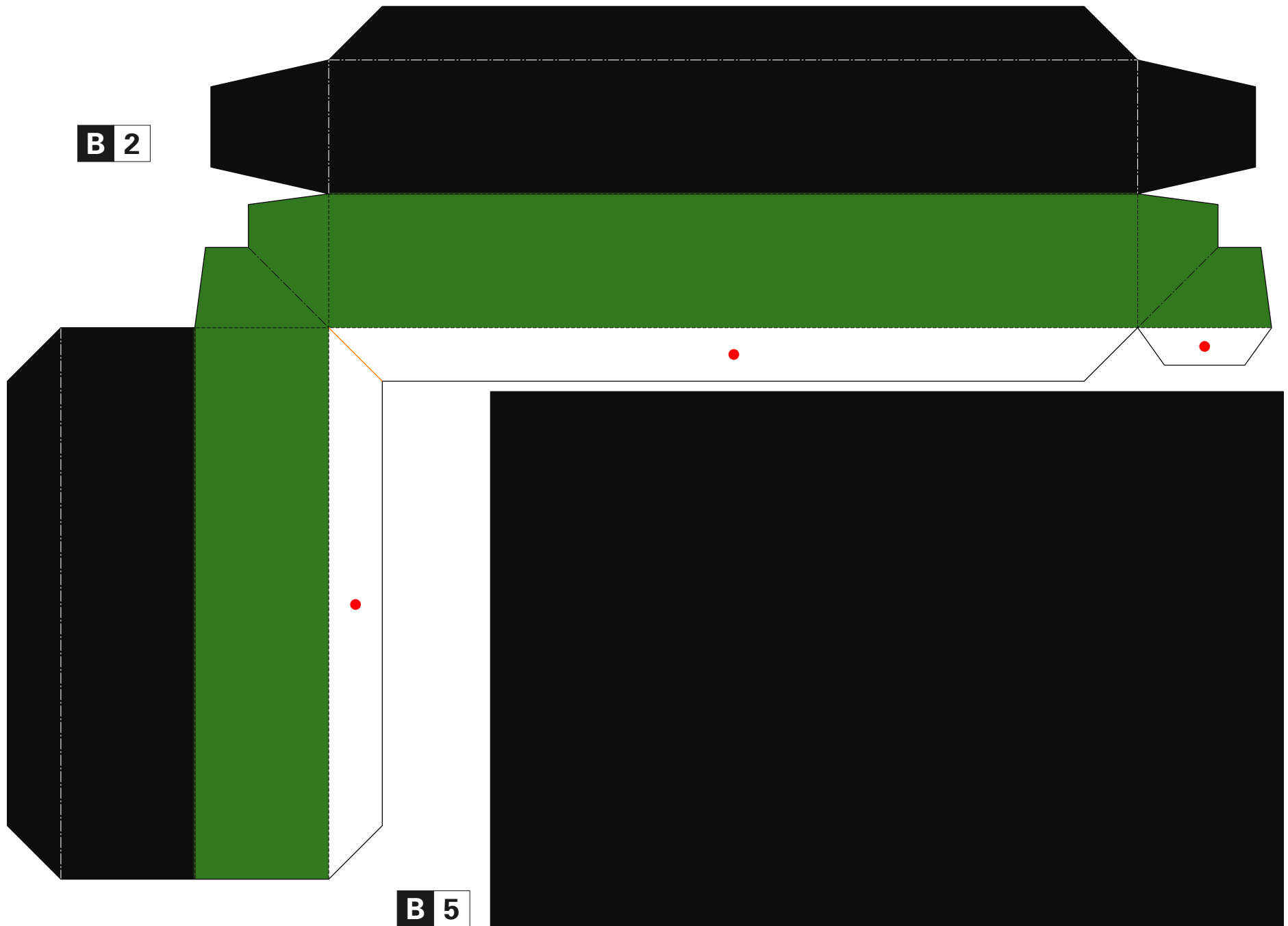
A 6



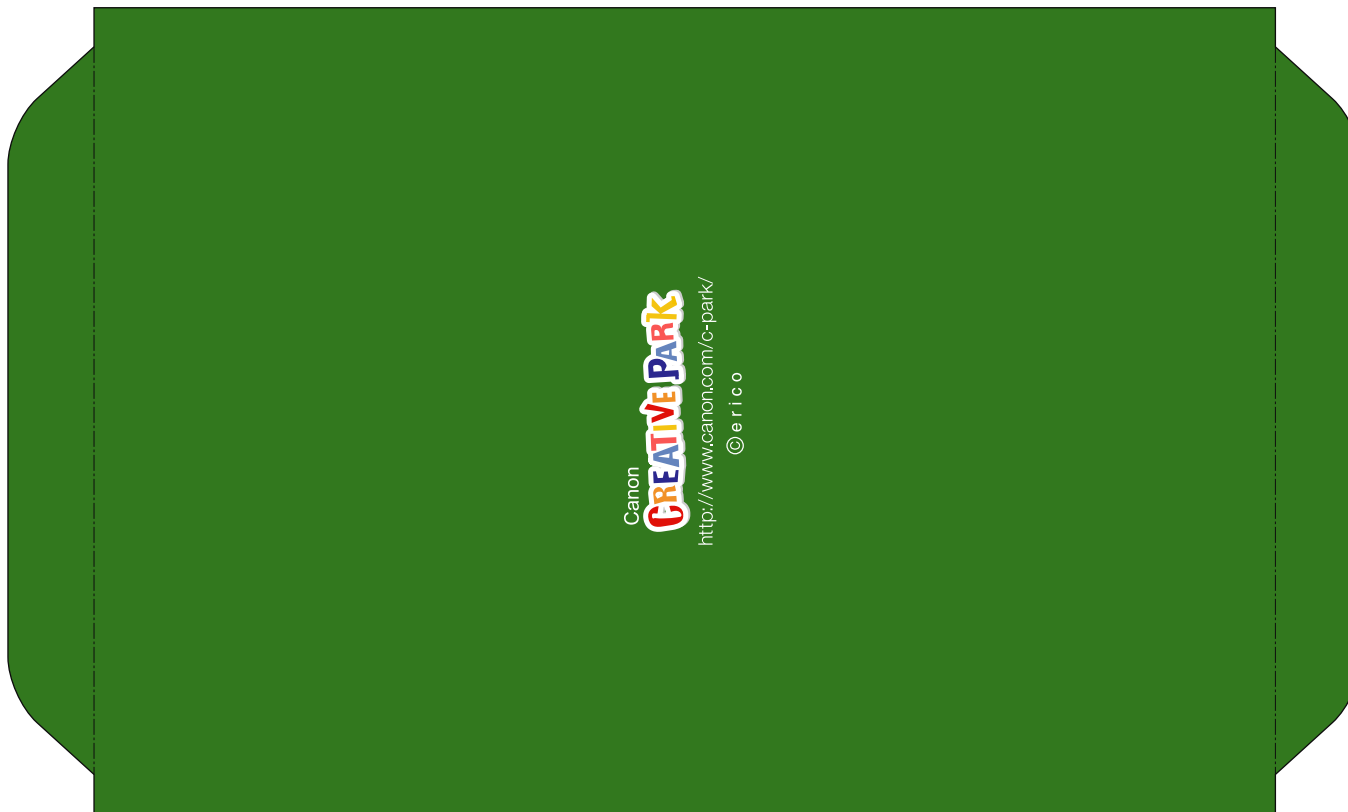
A 7







**B 3**



**B 6**

