



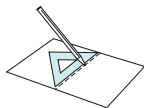
*Use a 4 x 6 size (102 mm x 152 mm) photo for the frame inside.

Instructions Pattern: 6 sheets Assembly Instructions: 1 sheet Number of parts: 16



You will need

Scissors, glue, ruler, a used ball-point pen



Assembly Tip

Trace along the folds with a ruler and a used pen (no ink) to get a sharper, easier fold.



Mountain fold
(dotted line)

Make a mountain fold



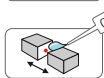
Valley fold
(dashed and dotted line)

Make a valley fold



Scissors line
(solid line)

Cut out



Cut in Line
(solid line)

Cut in

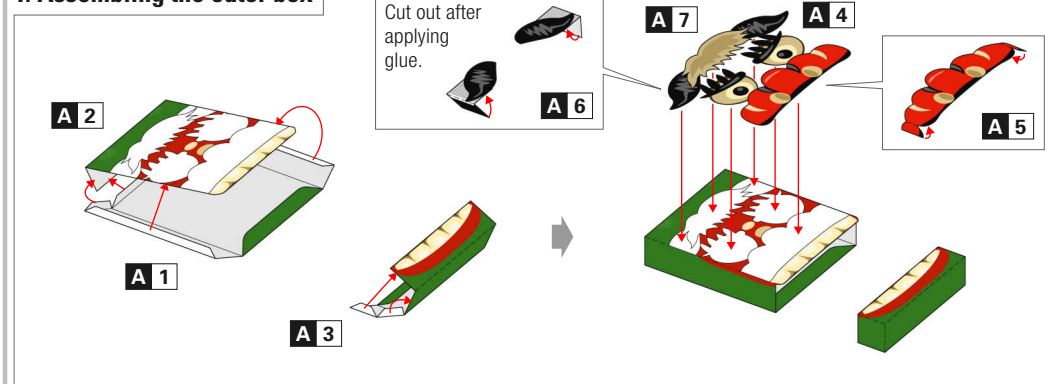
Glue tab

Attach

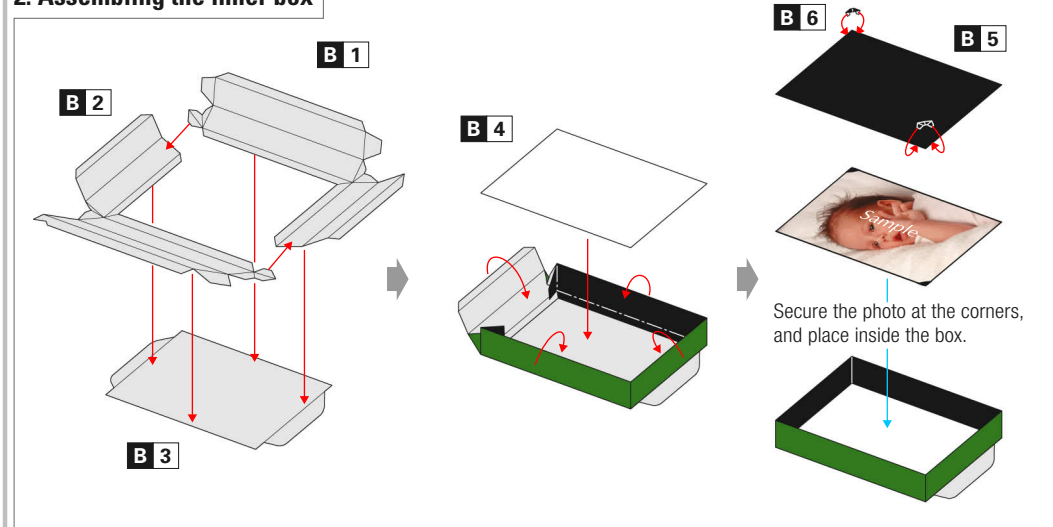


[Caution] Glue, scissors and other tools may be dangerous to young children, so be sure to keep them out of the reach of young children.

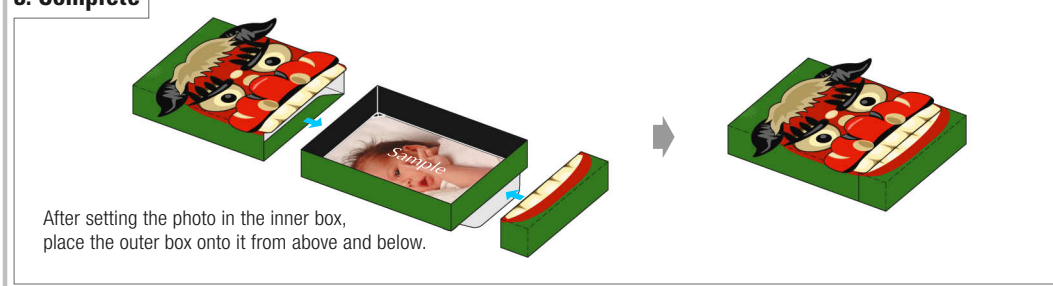
1. Assembling the outer box



2. Assembling the inner box

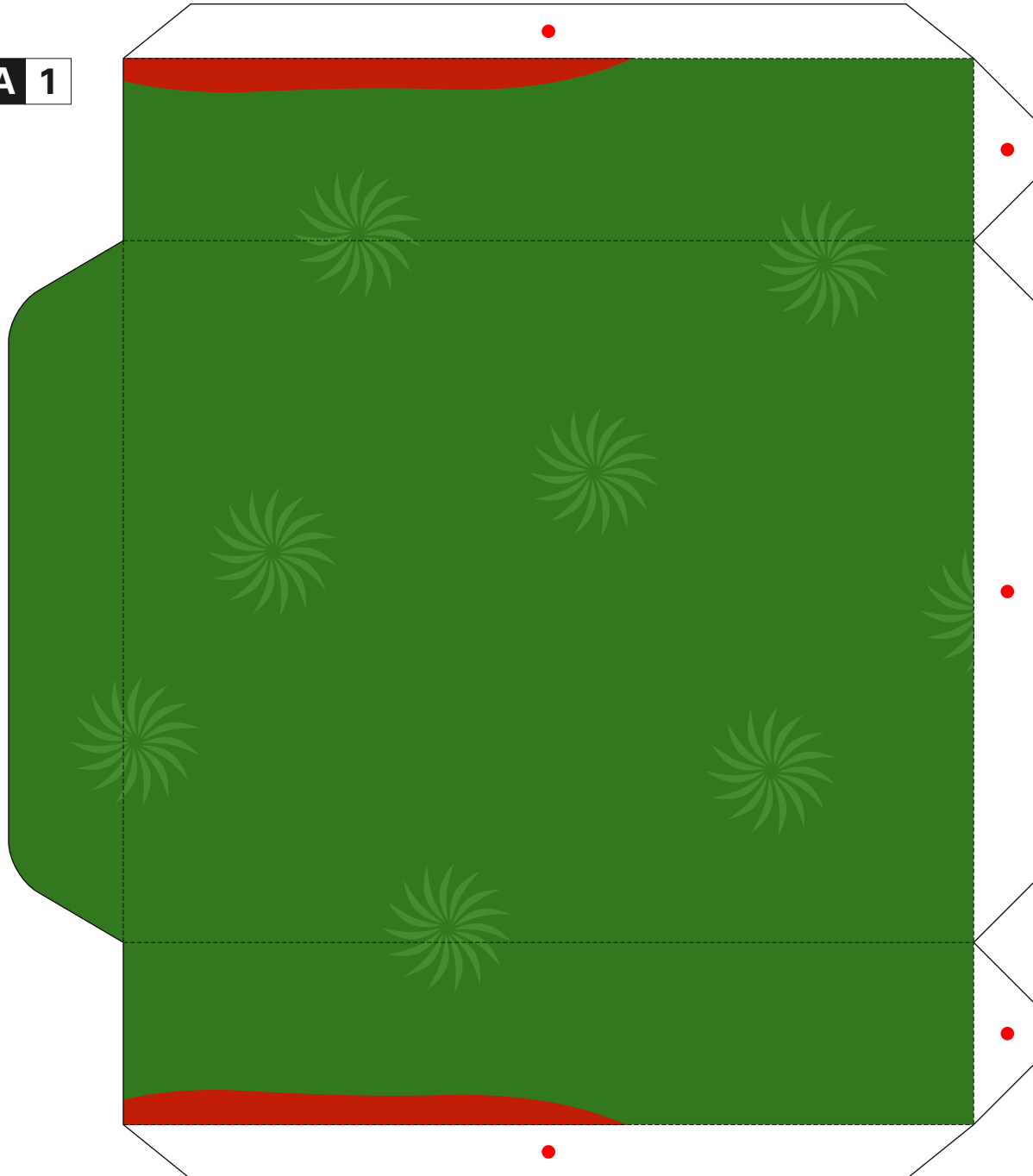


3. Complete

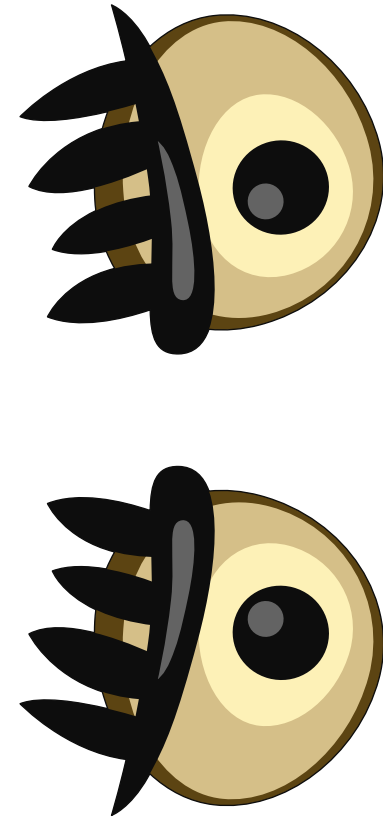


After setting the photo in the inner box, place the outer box onto it from above and below.

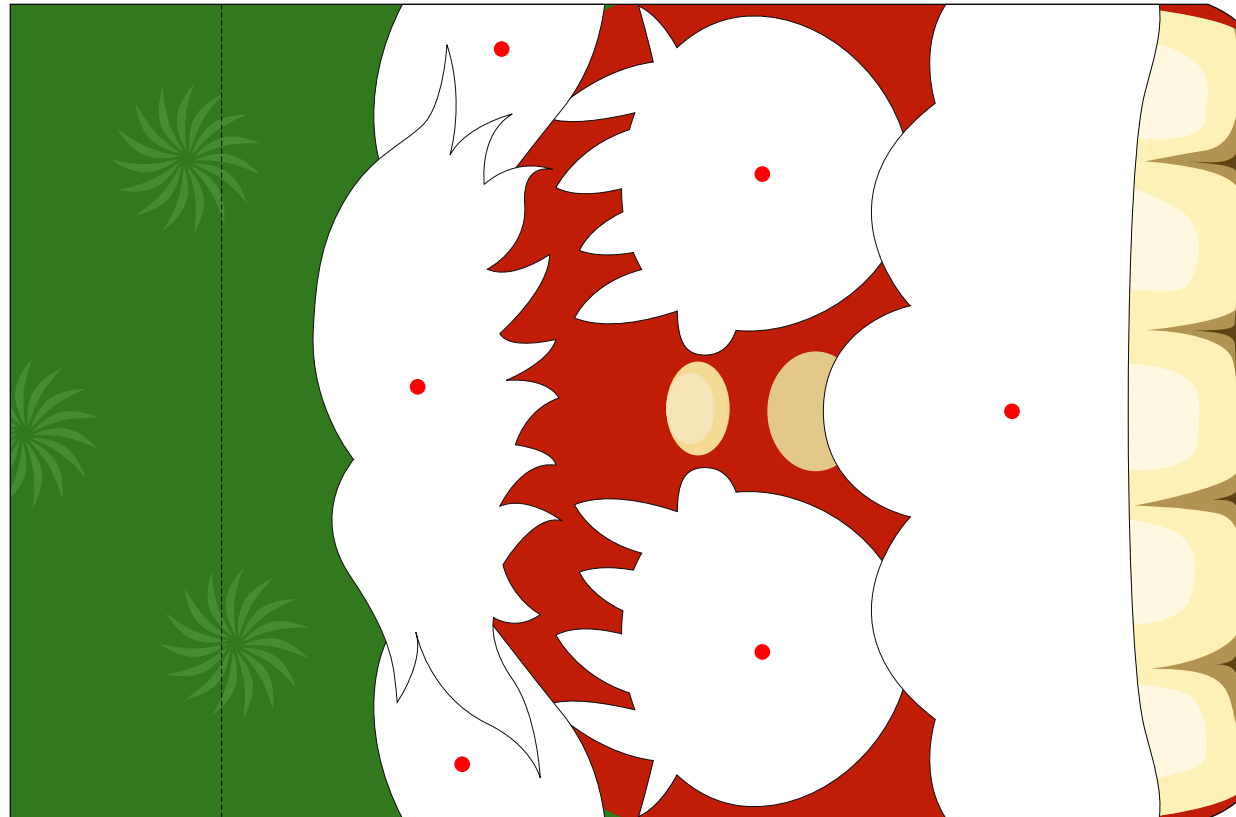
A 1



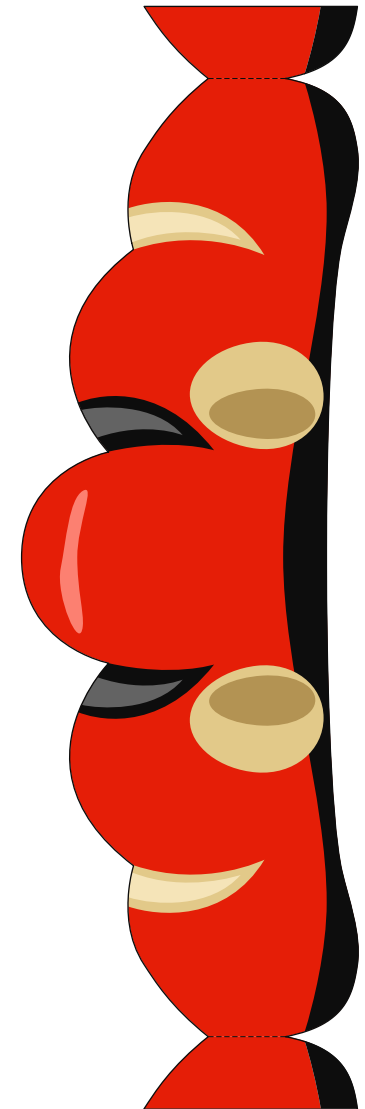
A 4



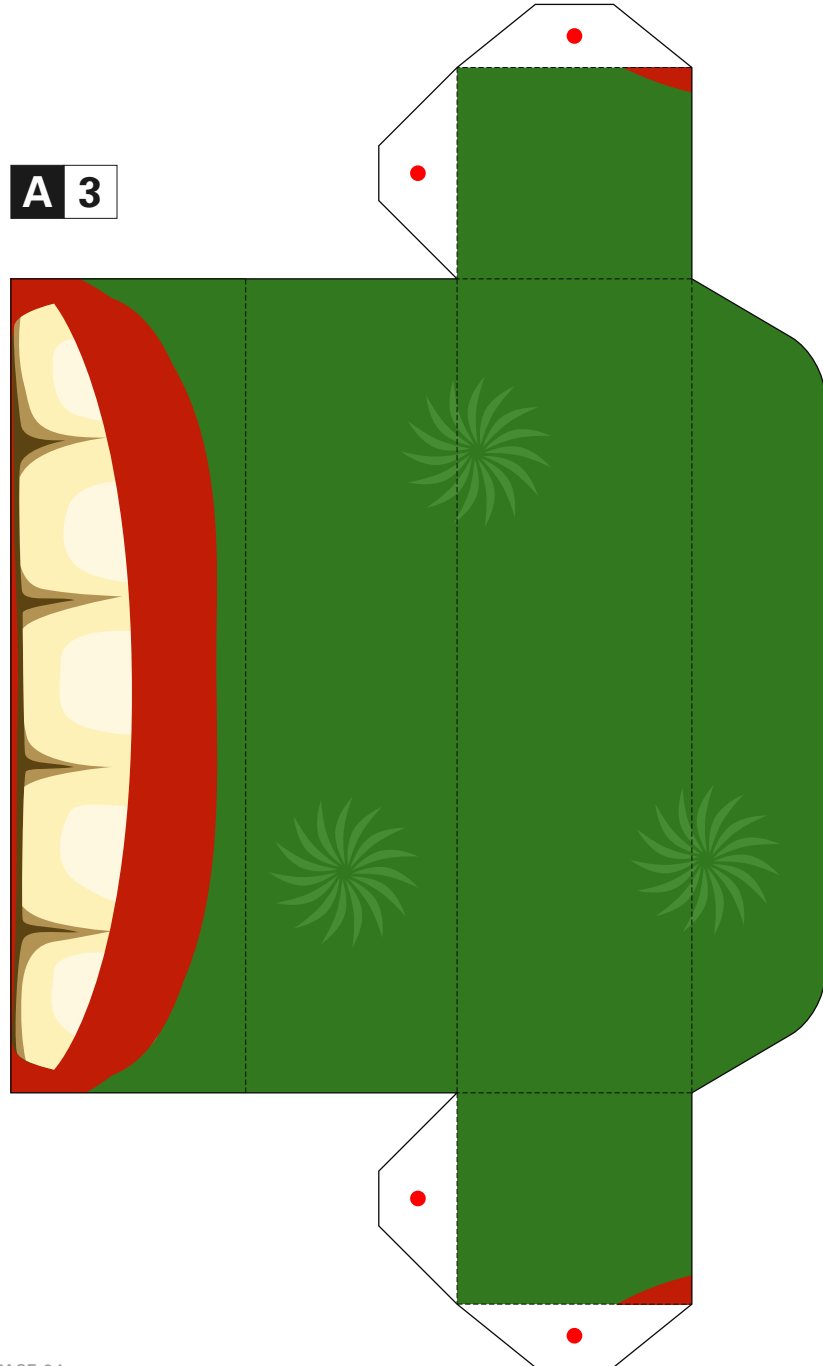
A 2



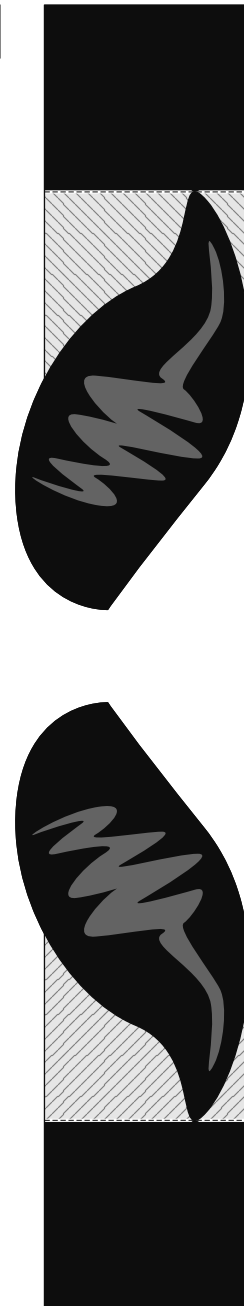
A 5



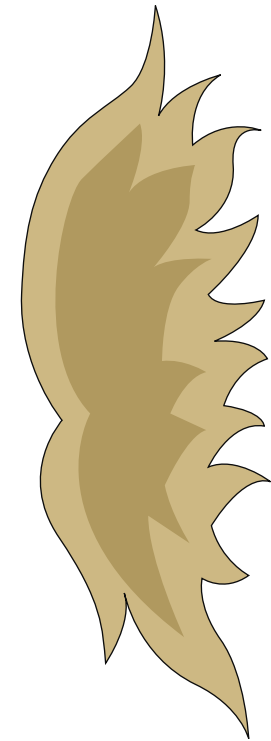
A 3



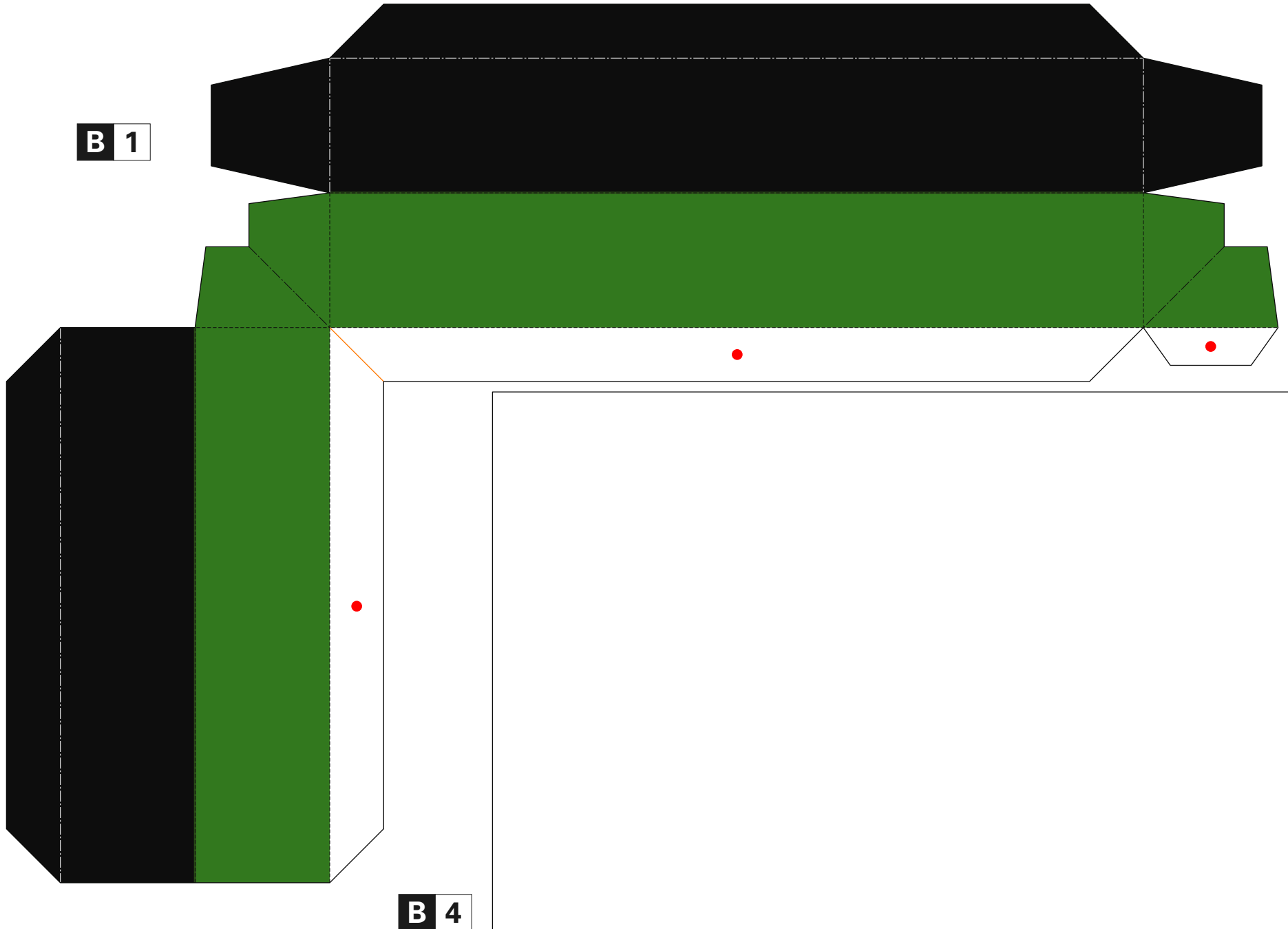
A 6



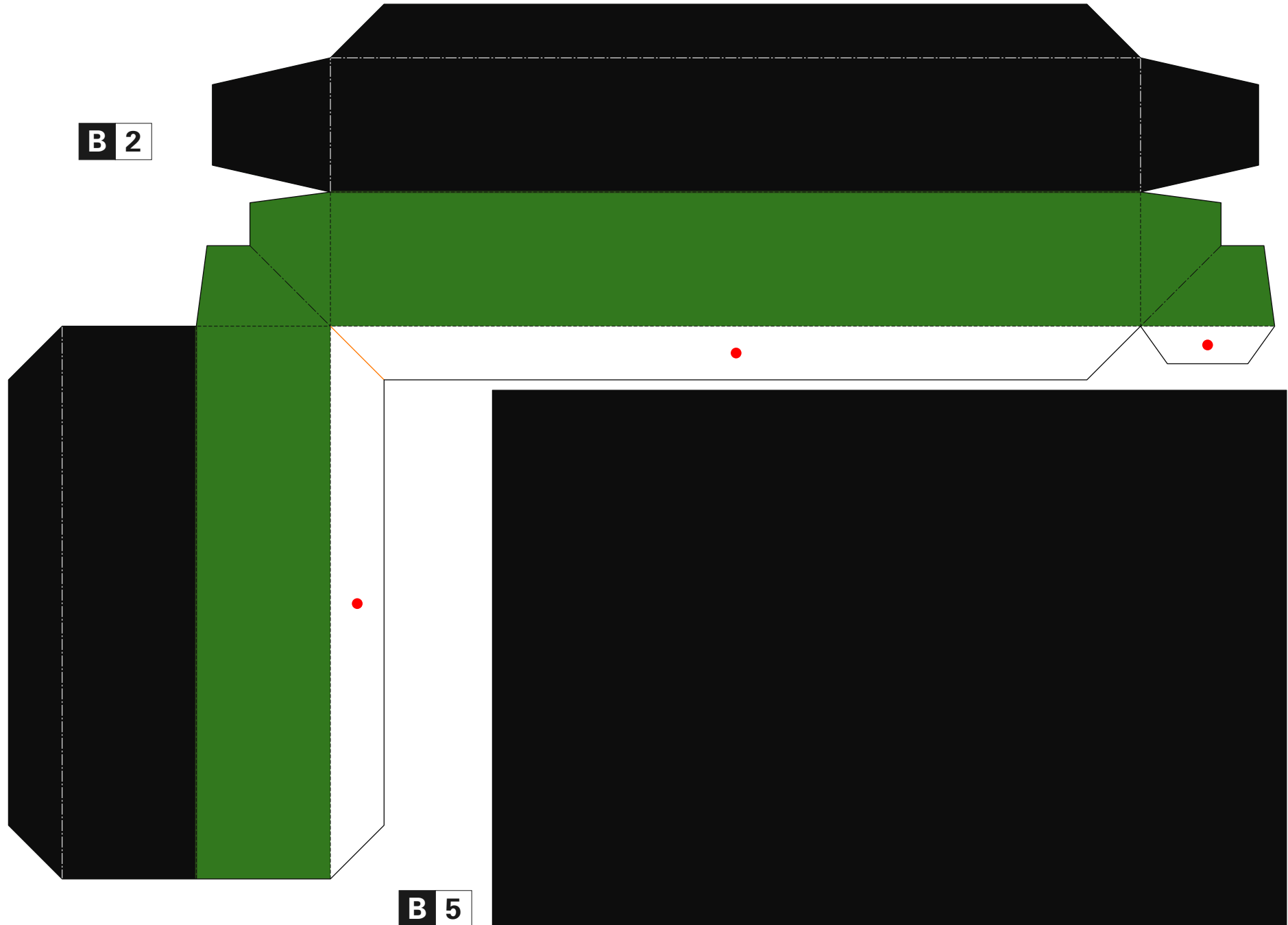
A 7



B 1



B 4



B 3



B 6

