



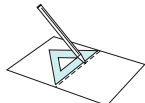
*Use a 4 x 6 size (102 mm x 152 mm) photo for the frame inside.

Instructions Pattern: 6 sheets Assembly Instructions: 1 sheet Number of parts: 12



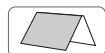
You will need

Scissors, glue, ruler, a used ball-point pen



Assembly Tip

Trace along the folds with a ruler and a used pen (no ink) to get a sharper, easier fold.



Mountain fold
(dotted line)

Make a mountain fold



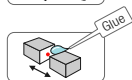
Valley fold
(dashed and dotted line)

Make a valley fold



Scissors line
(solid line)

Cut out



Cut in Line
(solid line)

Cut in

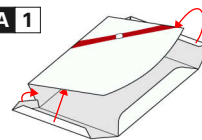
Glue tab
Attach



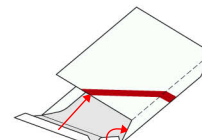
[Caution] Glue, scissors and other tools may be dangerous to young children, so be sure to keep them out of the reach of young children.

1. Assembling the outer box

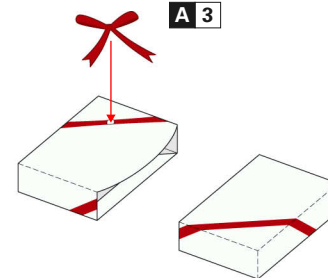
A 1



A 2

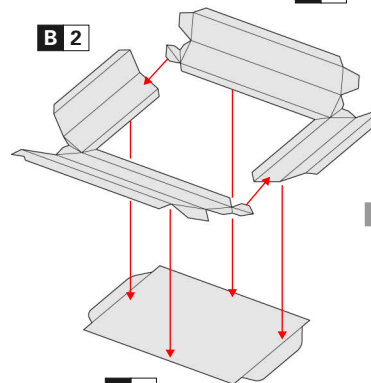


A 3



2. Assembling the inner box

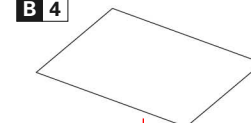
B 2



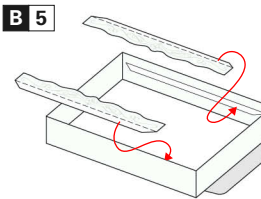
B 3

B 1

B 4

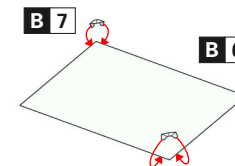


B 5



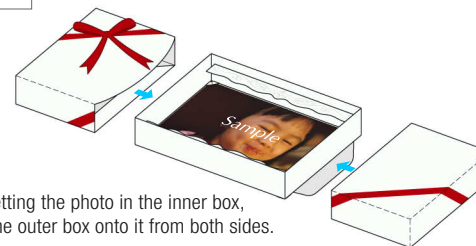
B 7

B 6



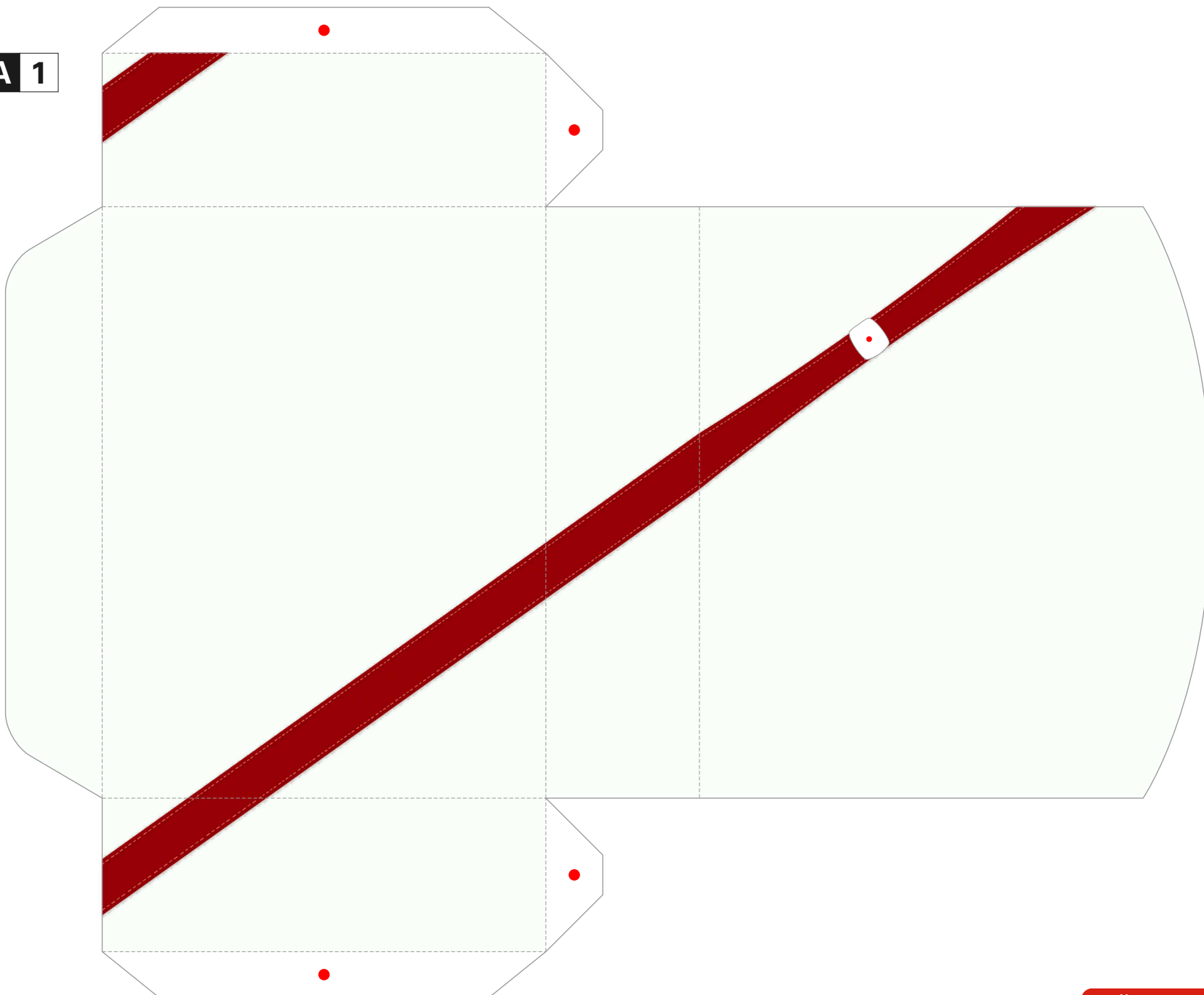
Secure the photo at the corners, and place inside the box.

3. Complete

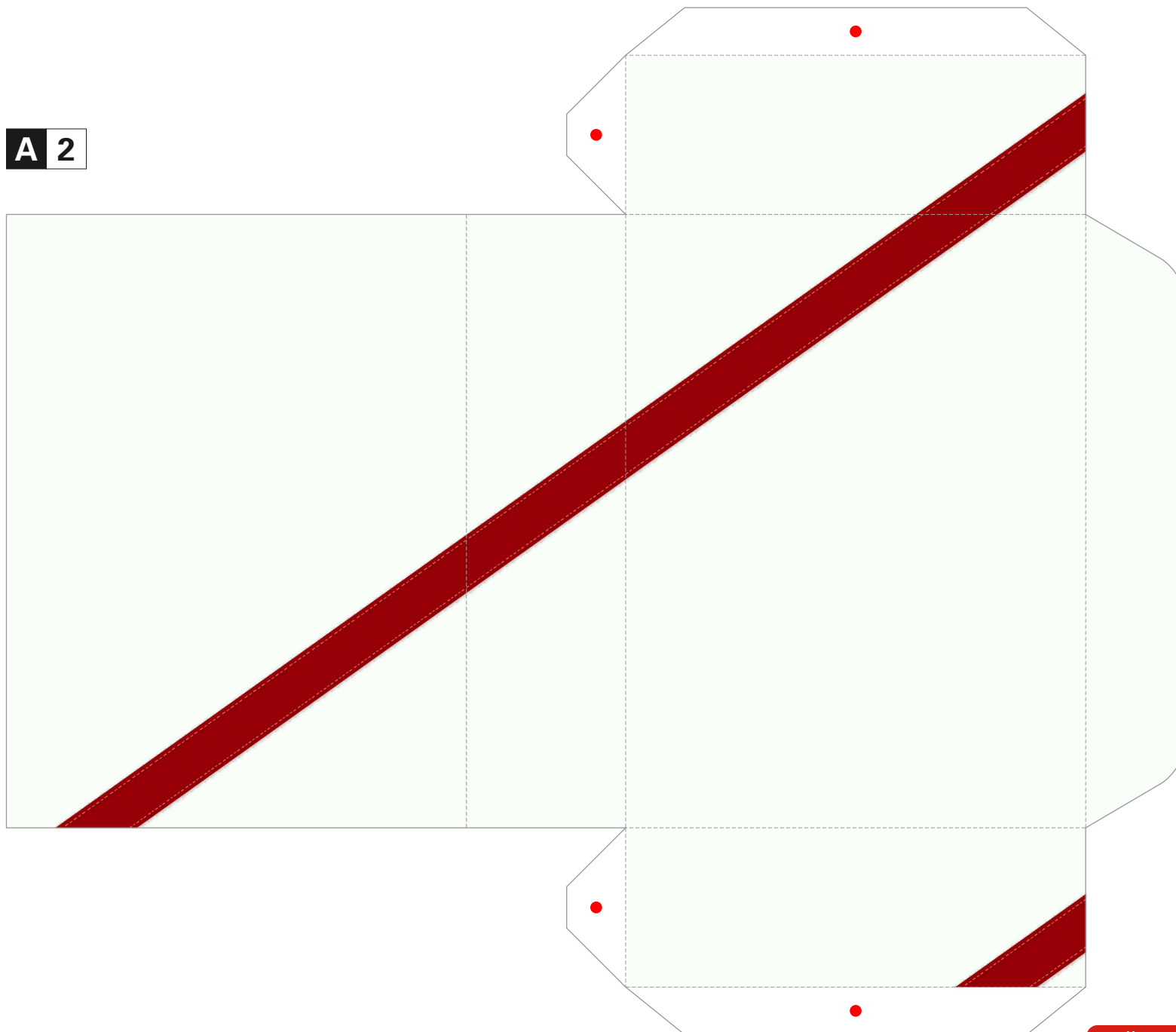


After setting the photo in the inner box, place the outer box onto it from both sides.

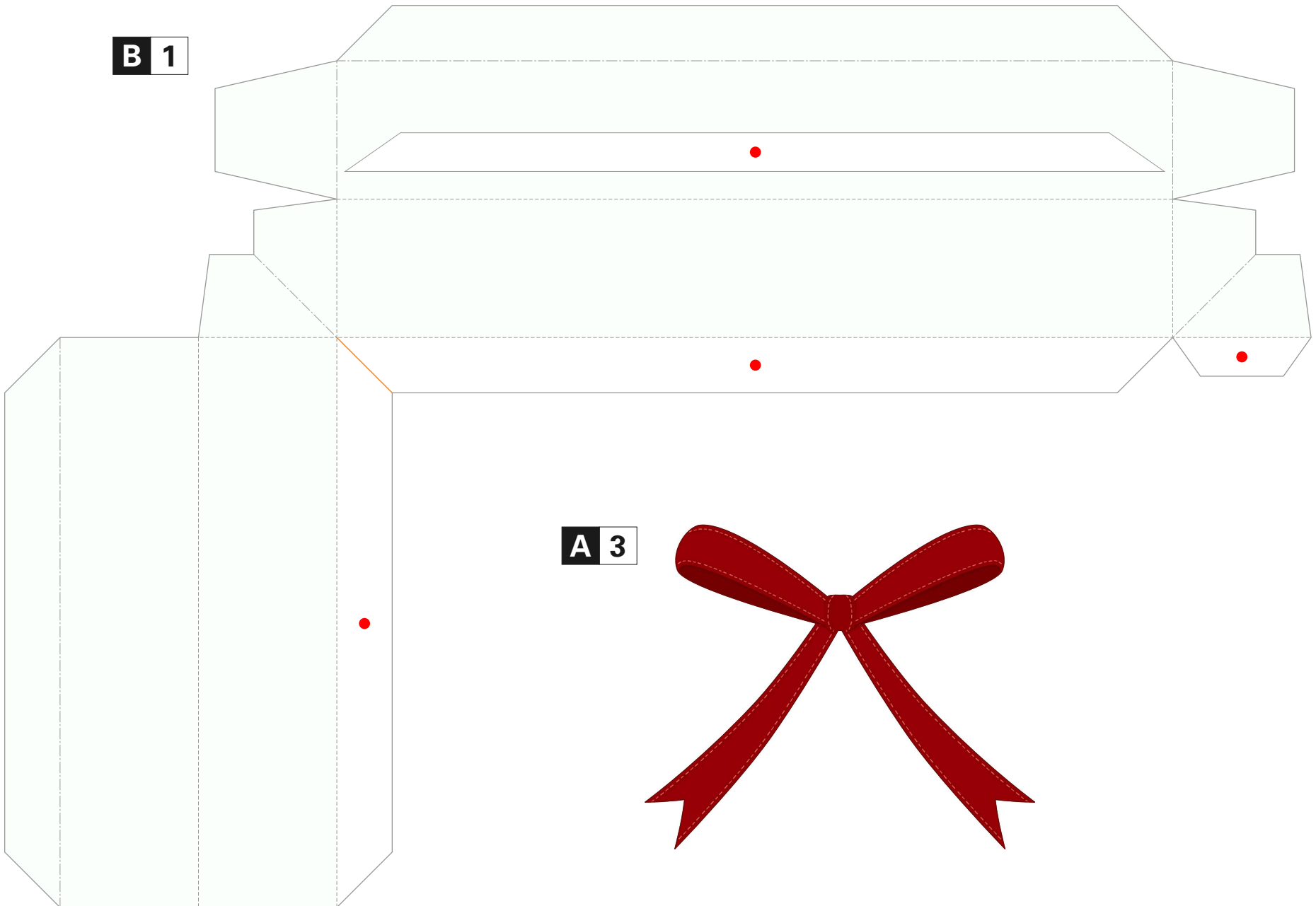
A 1



A 2



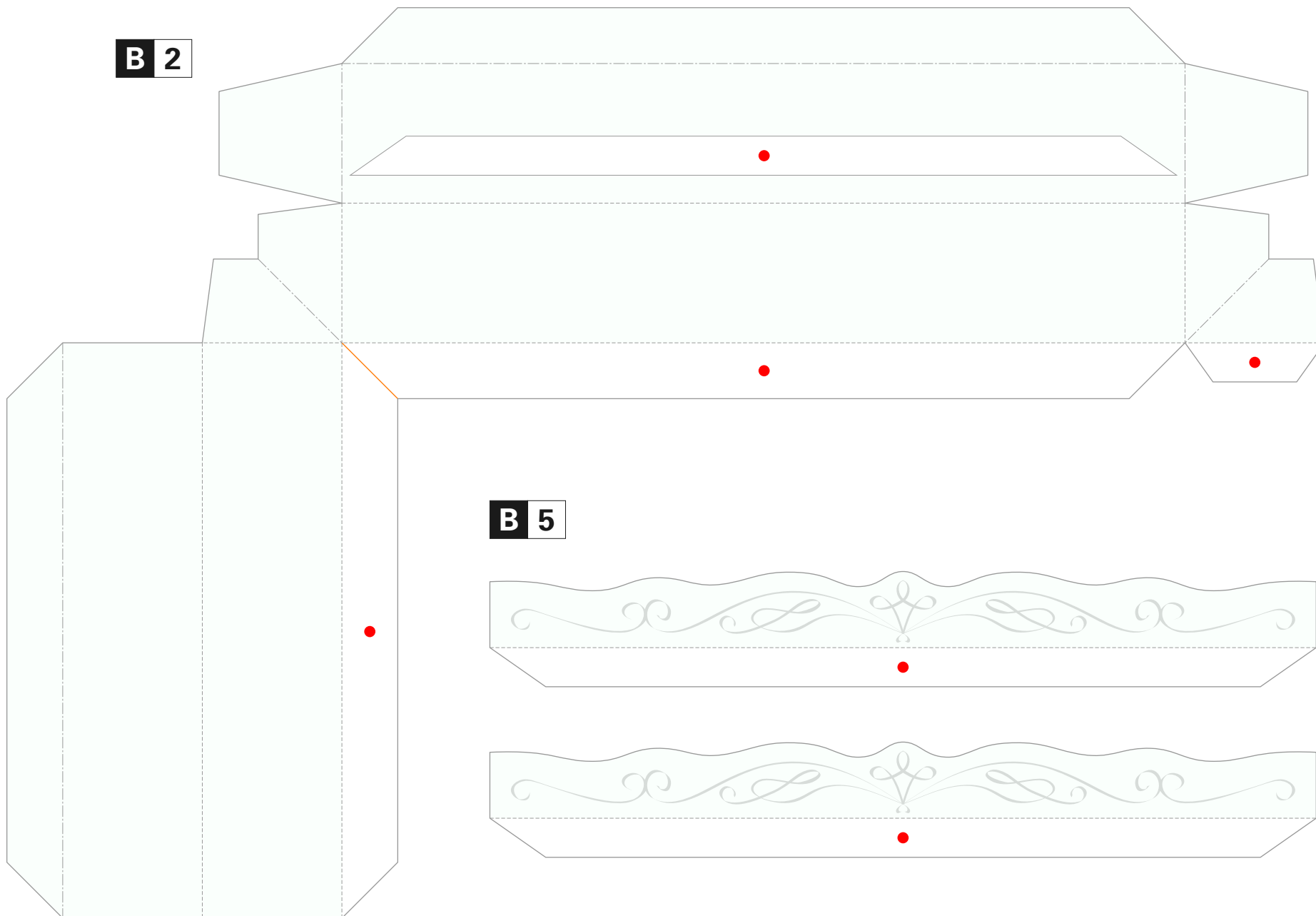
B 1



A 3

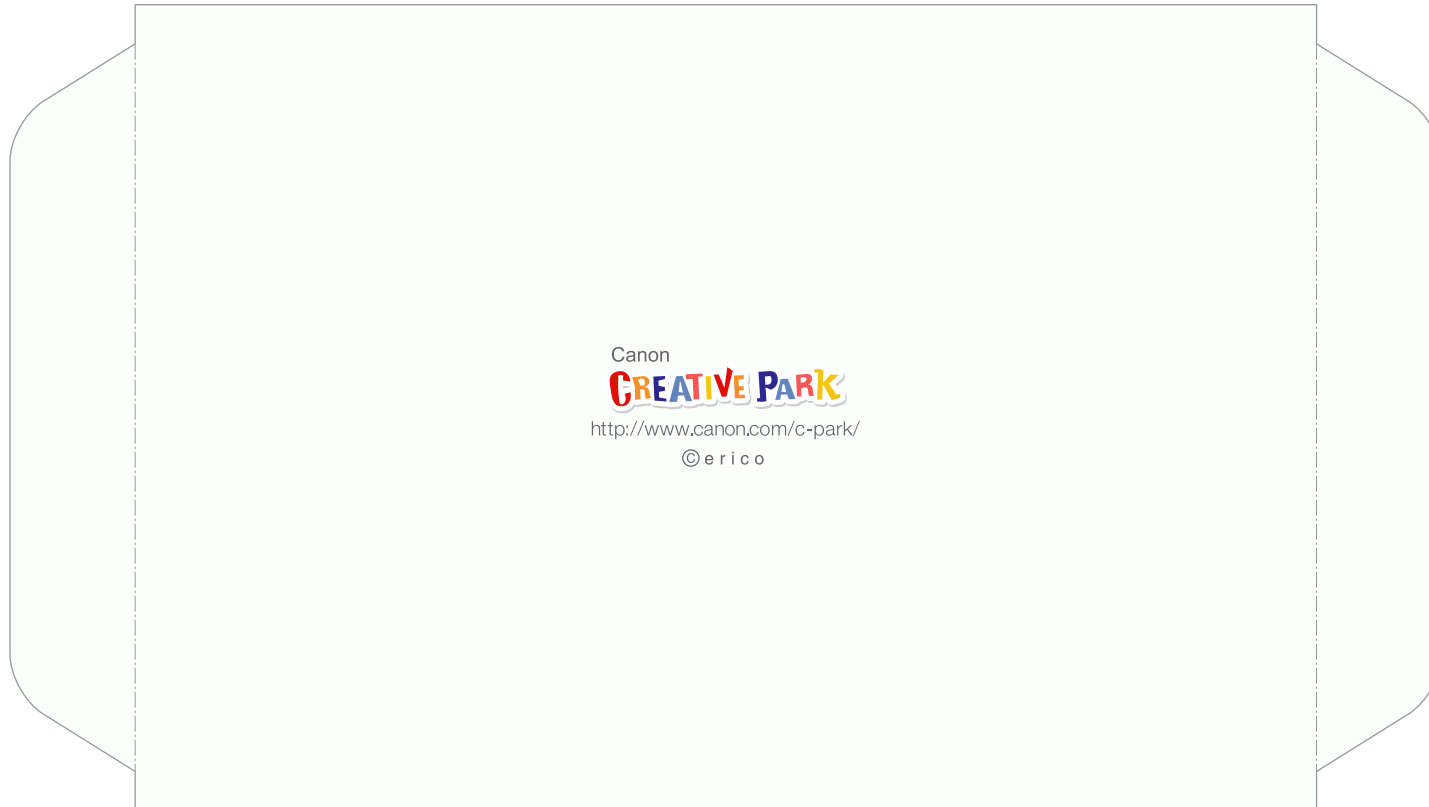


B 2

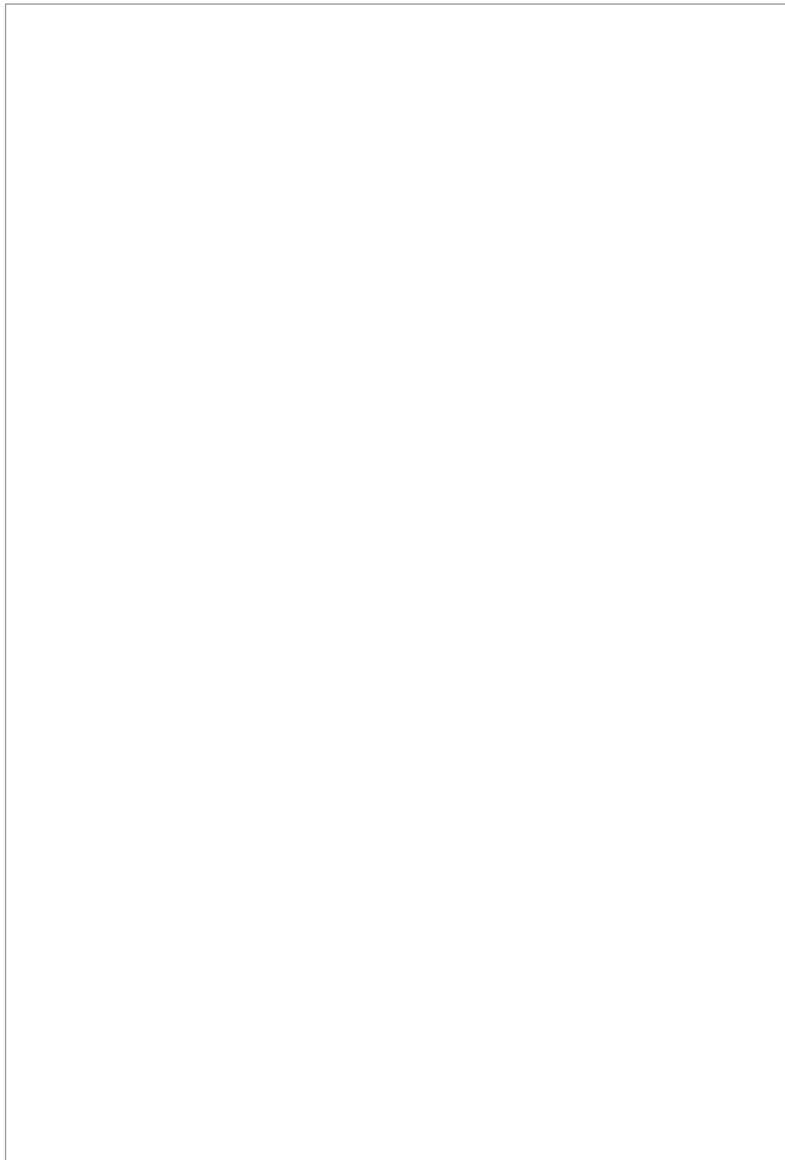


B 5

B 3



B 4



B 6



B 7

