



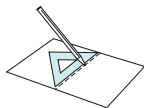
\*Use a 4 x 6 size (102 mm x 152 mm) photo for the frame inside.

**Instructions** Pattern: 6 sheets Assembly Instructions: 1 sheet Number of parts: 12



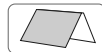
**You will need**

Scissors, glue, ruler, a used ball-point pen



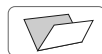
**Assembly Tip**

Trace along the folds with a ruler and a used pen (no ink) to get a sharper, easier fold.



**Mountain fold**  
(dotted line)

Make a mountain fold



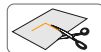
**Valley fold**  
(dashed and dotted line)

Make a valley fold



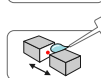
**Scissors line**  
(solid line)

Cut out



**Cut in Line**  
(solid line)

Cut in



**Glue tab**

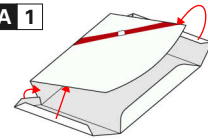
Attach



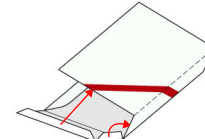
**[Caution]** Glue, scissors and other tools may be dangerous to young children, so be sure to keep them out of the reach of young children.

## 1. Assembling the outer box

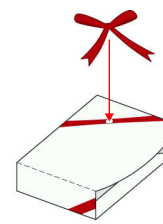
**A 1**



**A 2**

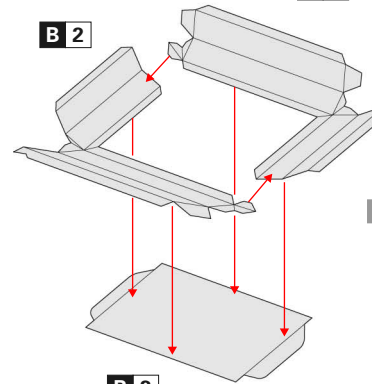


**A 3**



## 2. Assembling the inner box

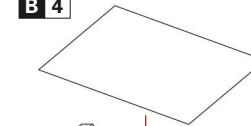
**B 2**



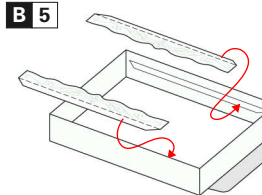
**B 3**

**B 1**

**B 4**

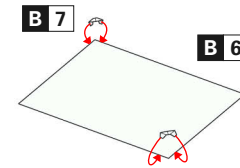


**B 5**



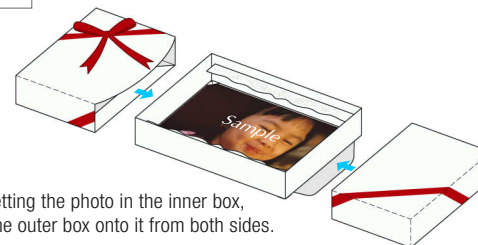
**B 7**

**B 6**



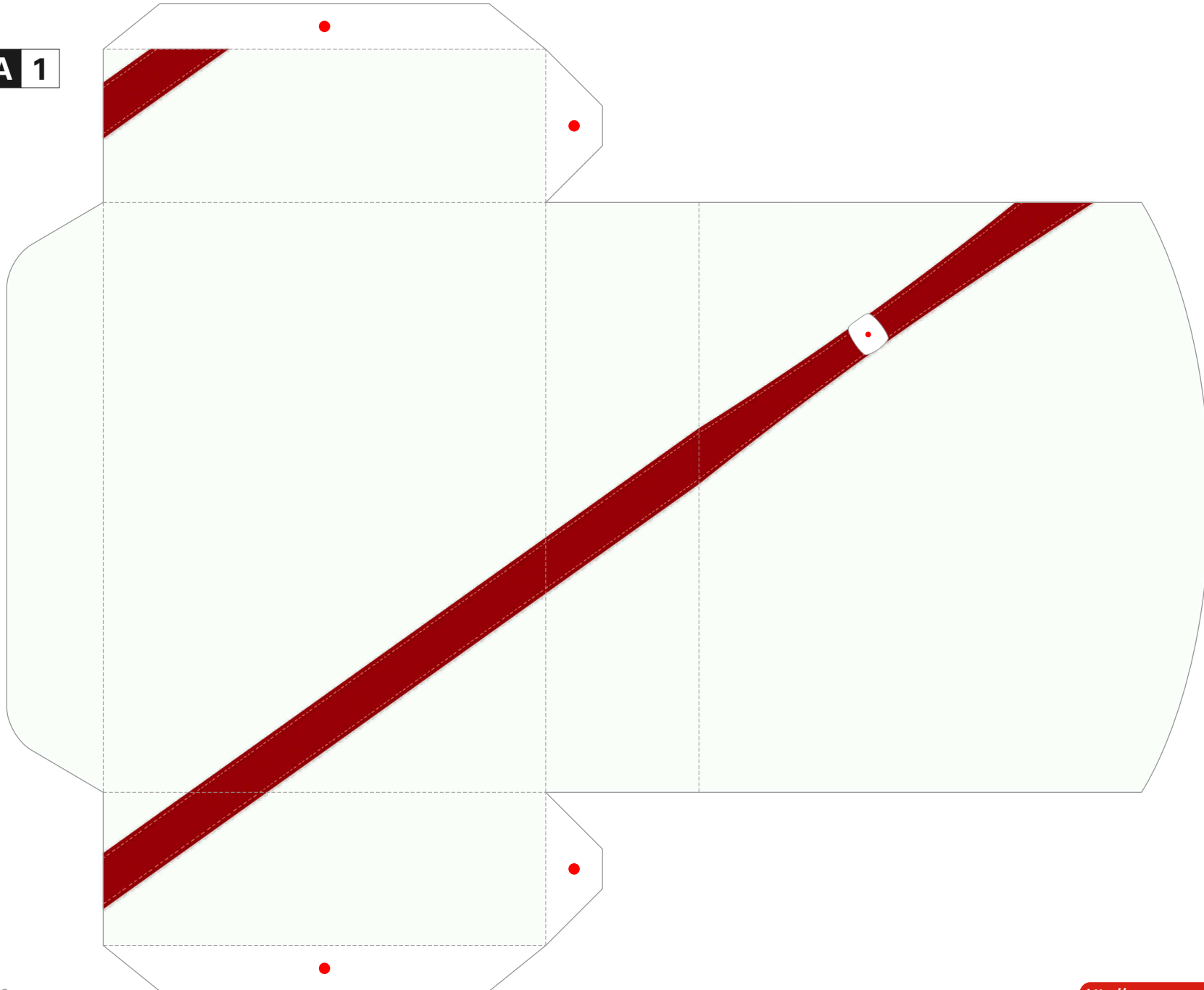
Secure the photo at the corners, and place inside the box.

## 3. Complete

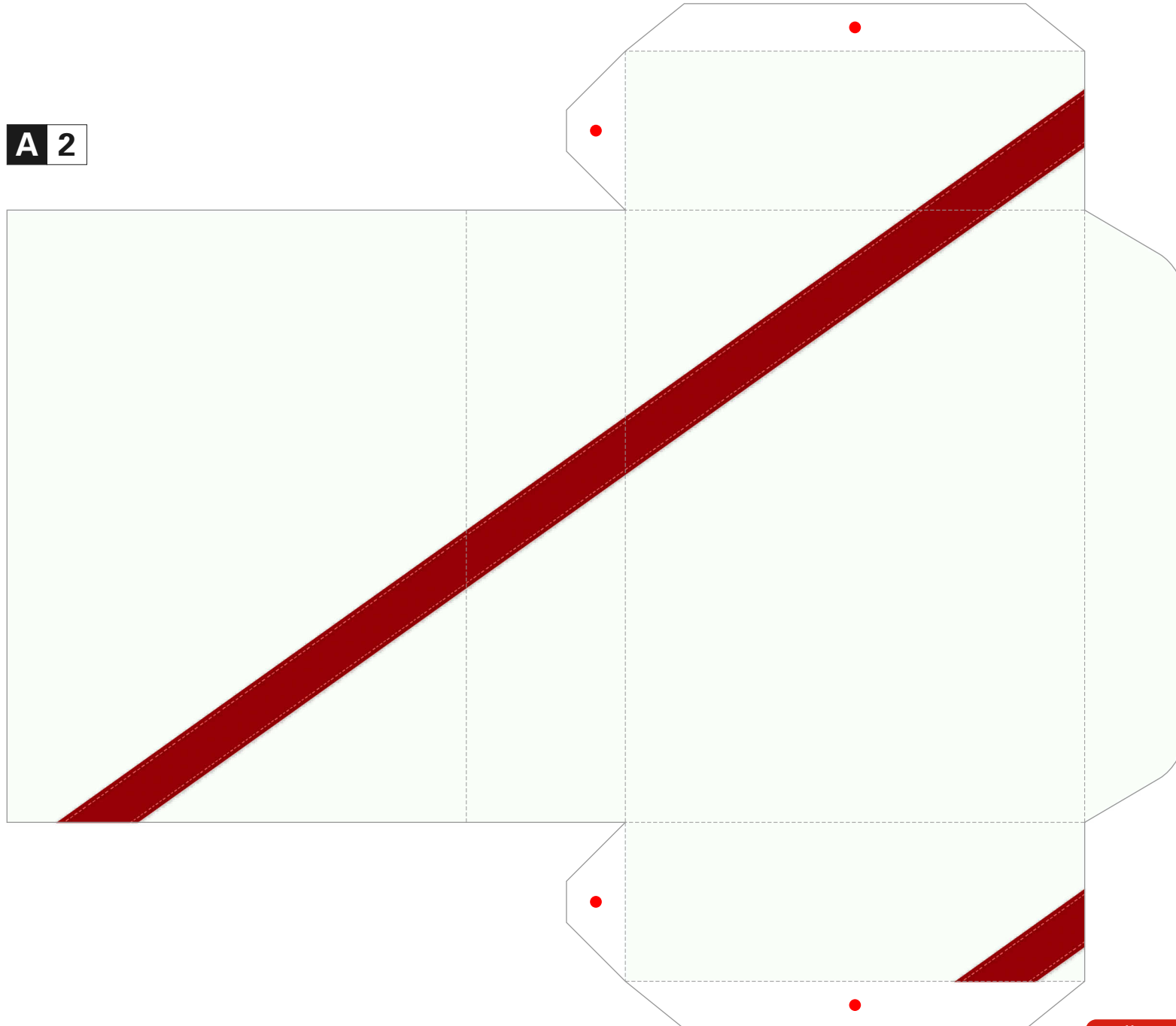


After setting the photo in the inner box, place the outer box onto it from both sides.

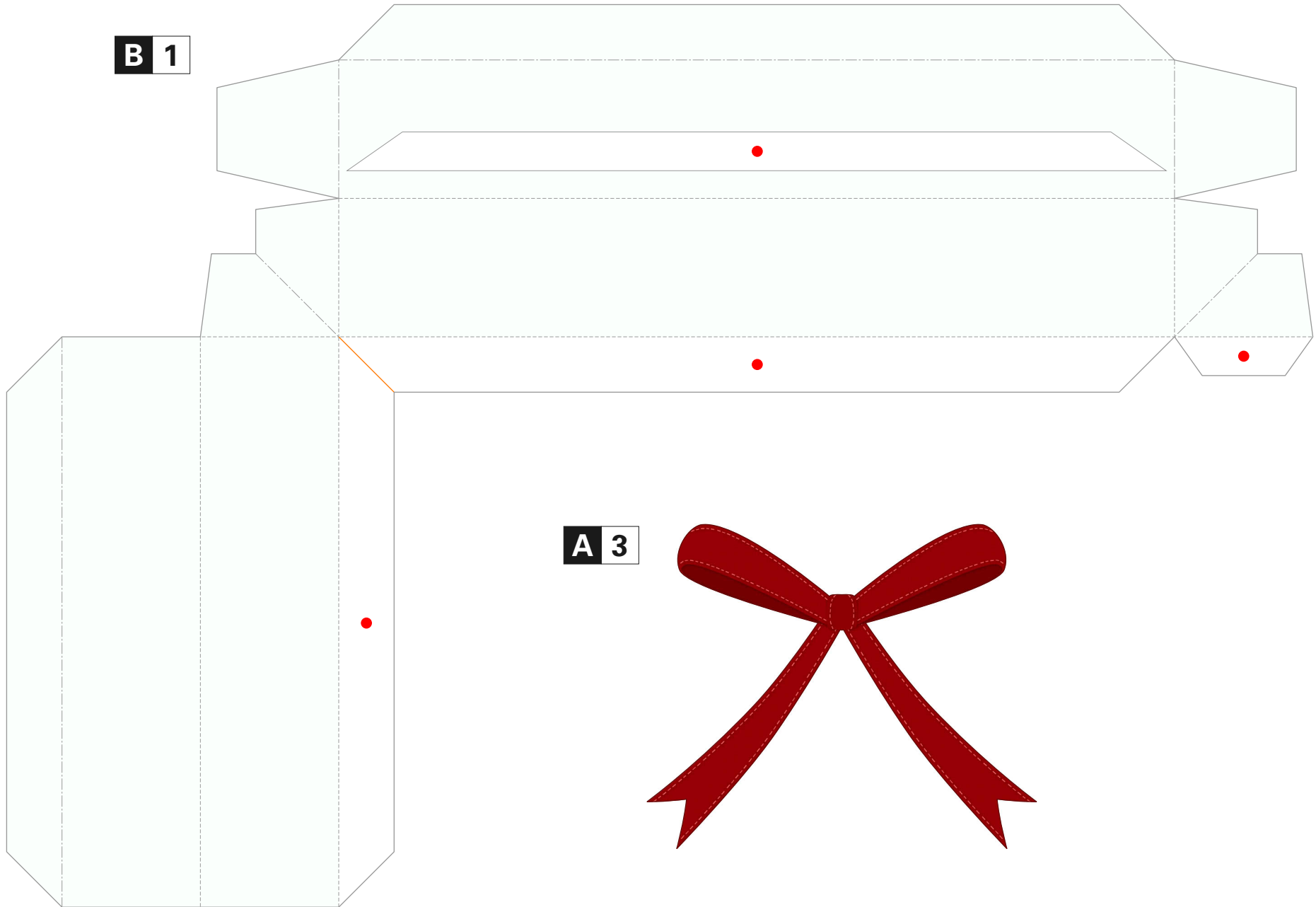
A 1



A 2



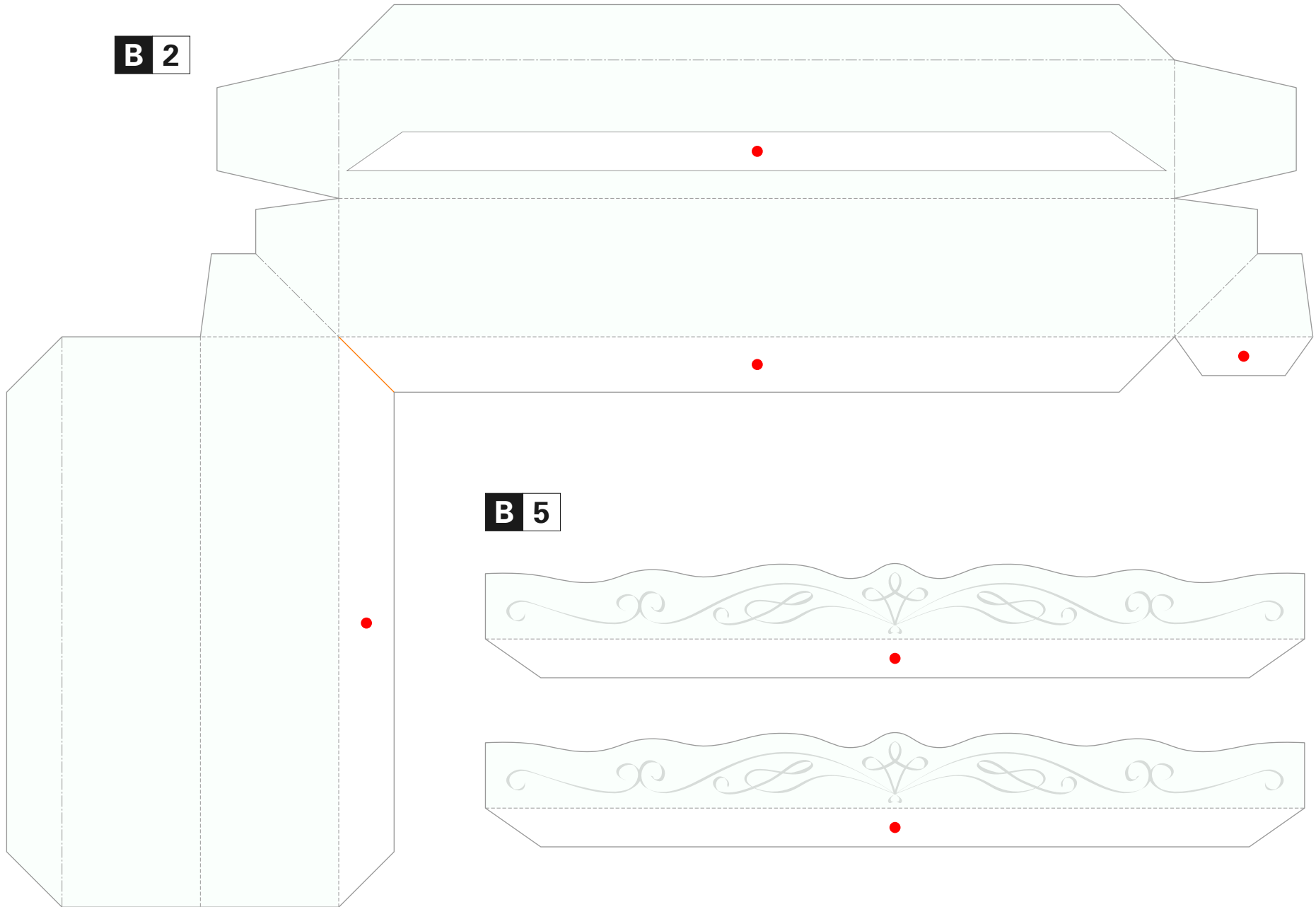
**B 1**



**A 3**

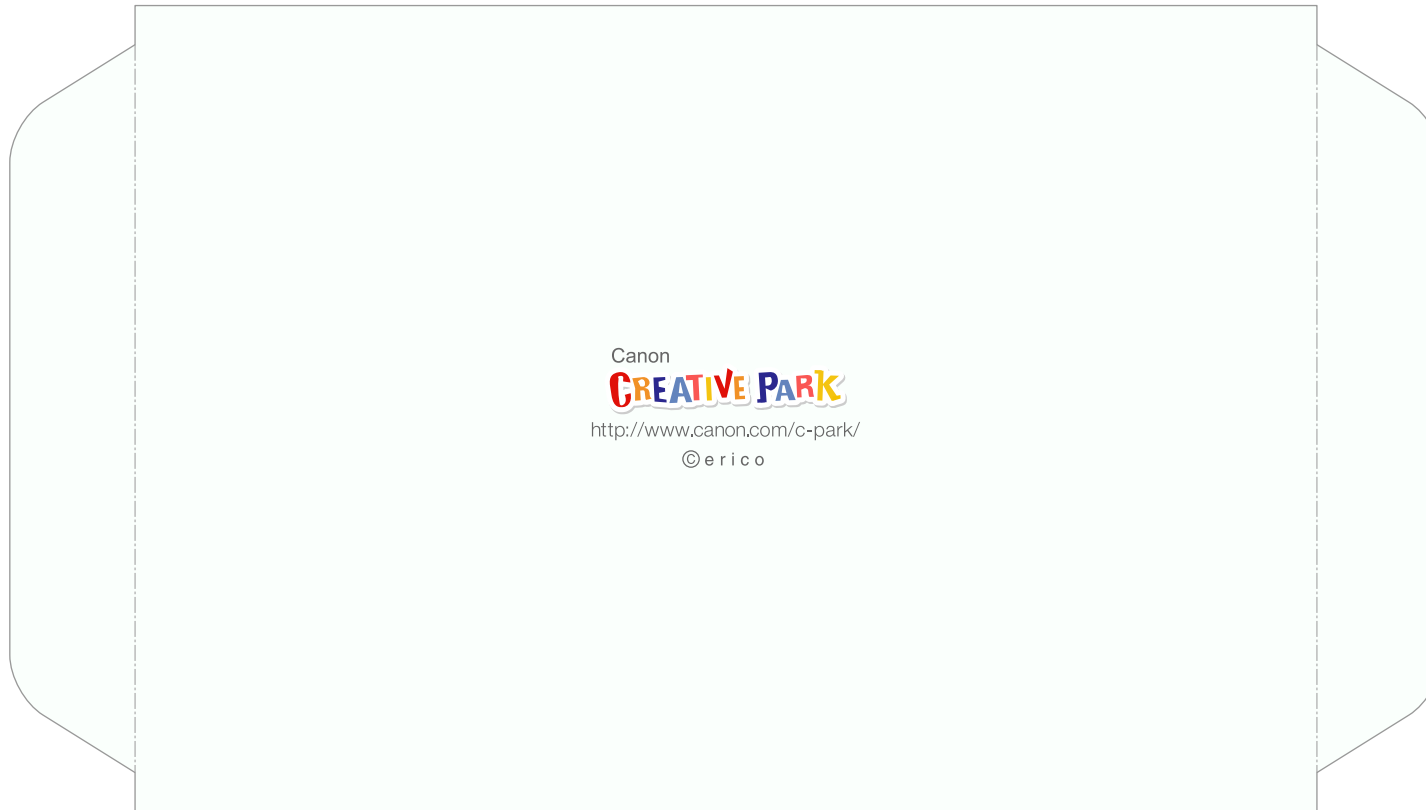


**B 2**

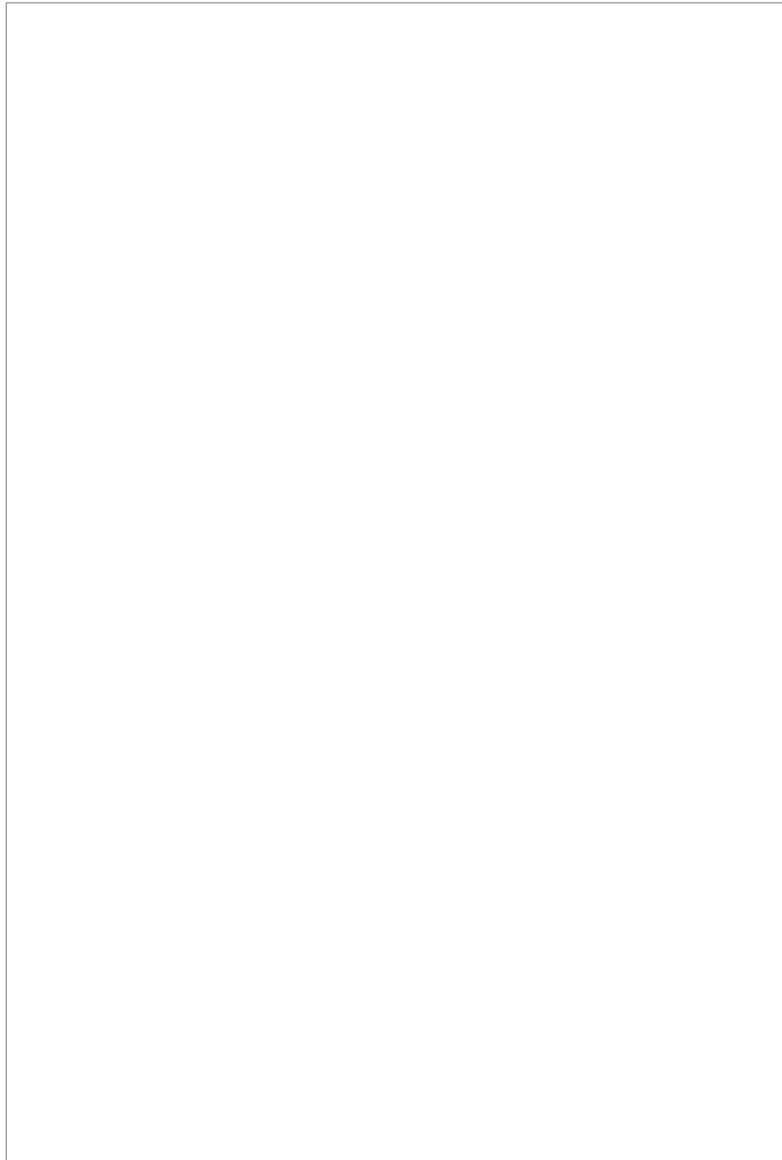


**B 5**

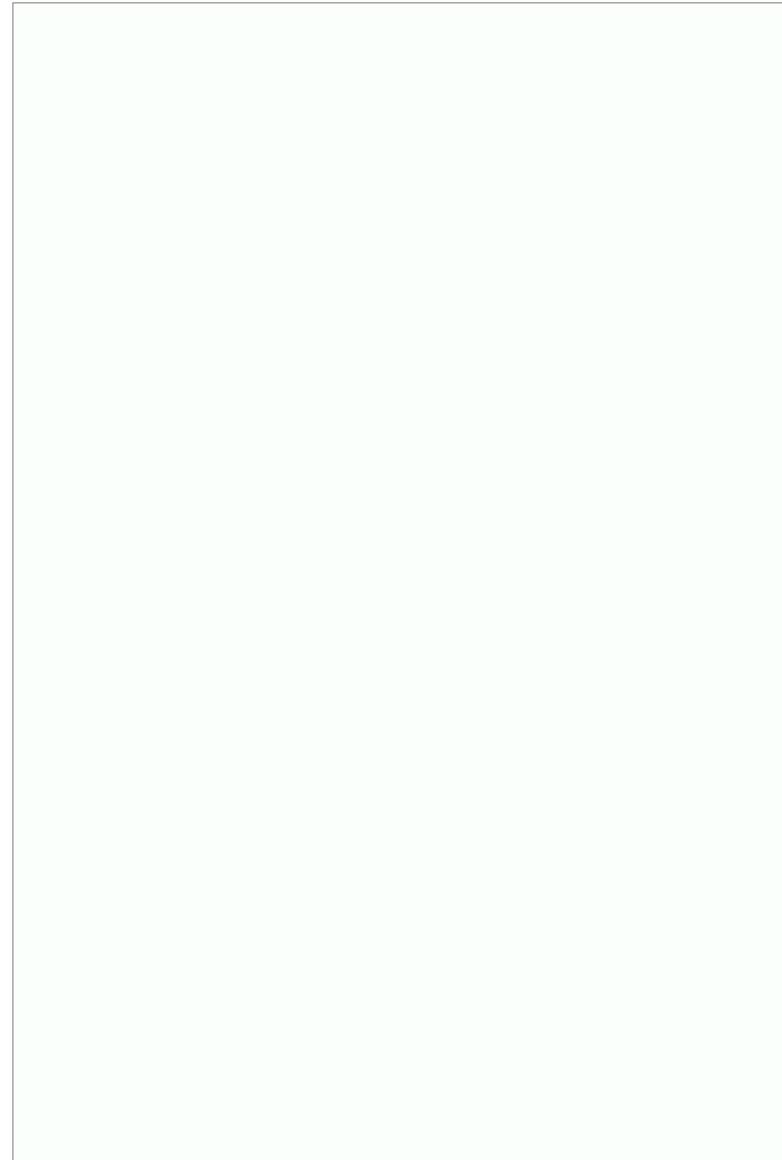
**B 3**



**B 4**



**B 6**



**B 7**

