

# Canon Rose (Yellow) : Assembly Instructions

Canon ® is a registered trademark of Canon Inc. © Canon Inc. © Yukiko Tanikoshi



## You will need

scissors, paste, a used ballpoint pen (tracing along the fold lines makes them easier to fold)

## Explanation of Symbols

### ▲ Numbered glue tabs

Glue the parts together in the order indicated by the numbers.



**[Caution]**

Glue, scissors and other tools may be dangerous to young children so be sure to keep them out of the reach of young children.

## Assembly procedure

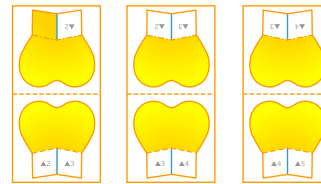
— Cut line    - - - Mountain fold    - · - · Valley fold    — Slot

\*STEP\*

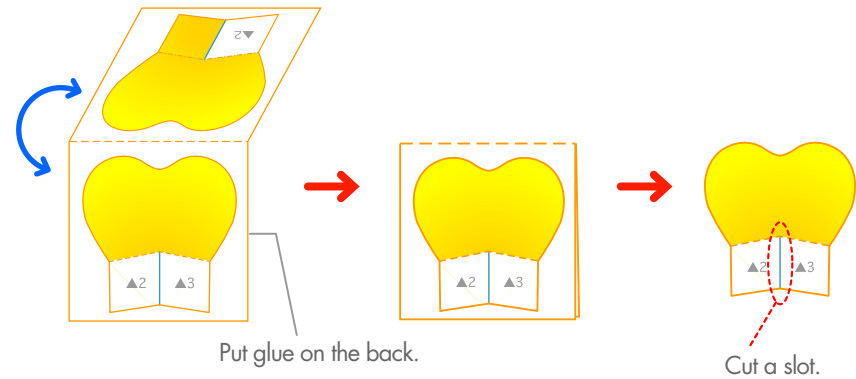
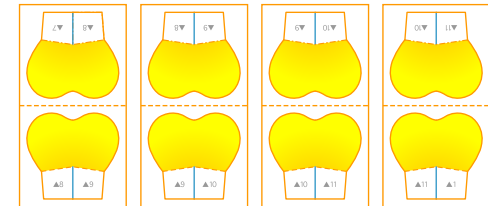
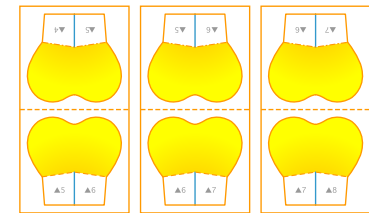
### 1 Making the Rose Petals

Put glue on the back of parts [2] to [11], fold along the line and attach them so that the picture faces outwards. Following the lines, cut out the petals.

#### Part [2] ~ [4]



#### Part [5] ~ [11]



# Canon Rose (Yellow) : Assembly Instructions

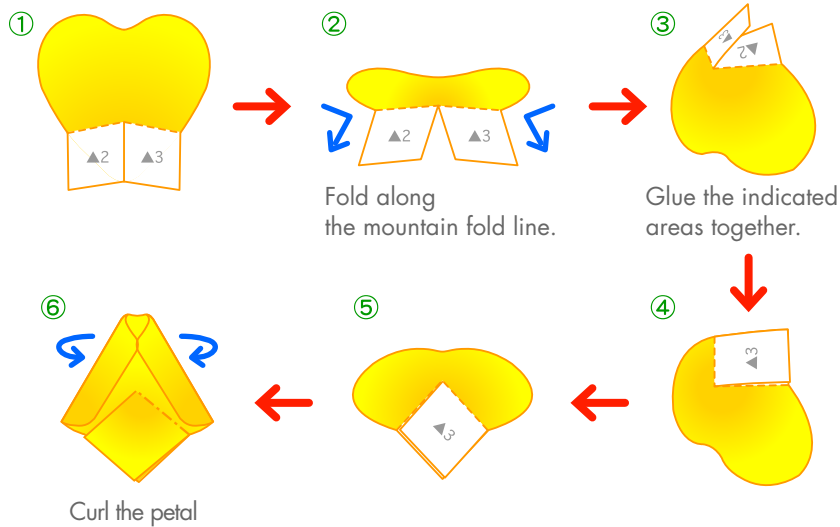
Canon ® is a registered trademark of Canon Inc. © Canon Inc. © Yukiko Tanikoshi

## Assembly procedure

### \*STEP\* 2 Making the Rose Petals

Assemble the petals using parts [2] to [4] (3 petals), and curl both edges of the petals inwards.

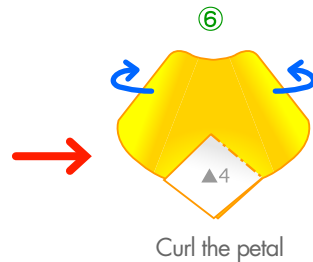
#### Part [2] ~ [4]



Assemble the petals using parts [5] to [11] (7 petals), and curl both edges of the petals outwards.

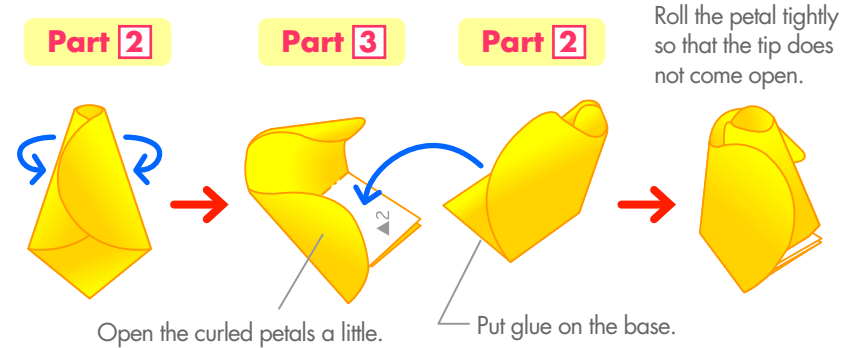
#### Part [5] ~ [11]

\* Follow the same procedure as you did for parts [2] to [4] in steps ① to ⑤.

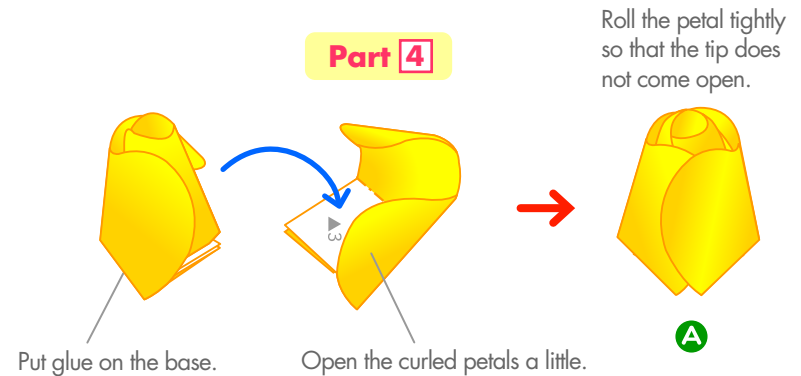


### \*STEP\* 3 Making a Rose

Align the curled edges of the petal you made using part [2] in step ② together. Next, wrap the part [3] petal around the part [2] petal and glue them together.



Wrap the part [4] petal around the part [2] and [3] petals in the same way, and glue them together.



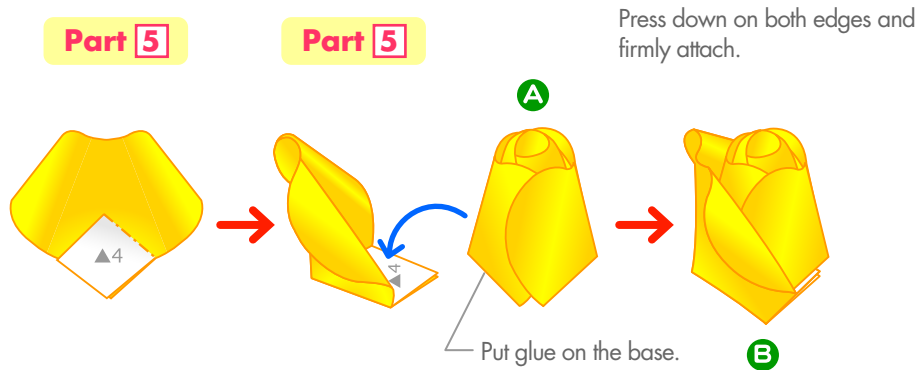
# Canon Rose (Yellow) : Assembly Instructions

Canon ® is a registered trademark of Canon Inc. © Canon Inc. © Yukiko Tanikoshi

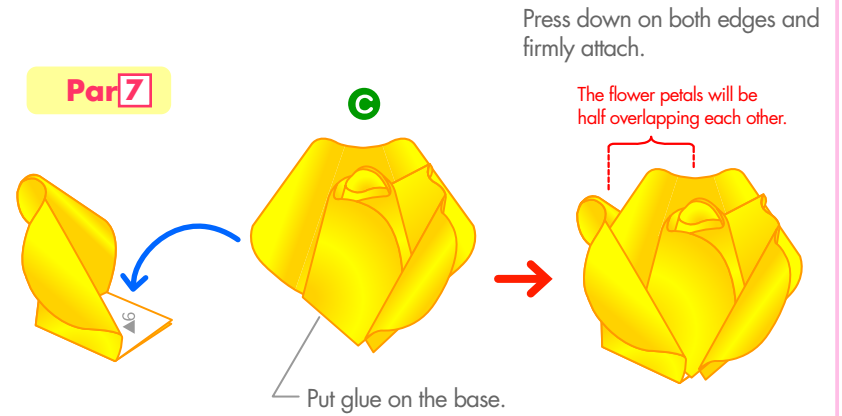
## Assembly procedure

### STEP 4 Making a Rose

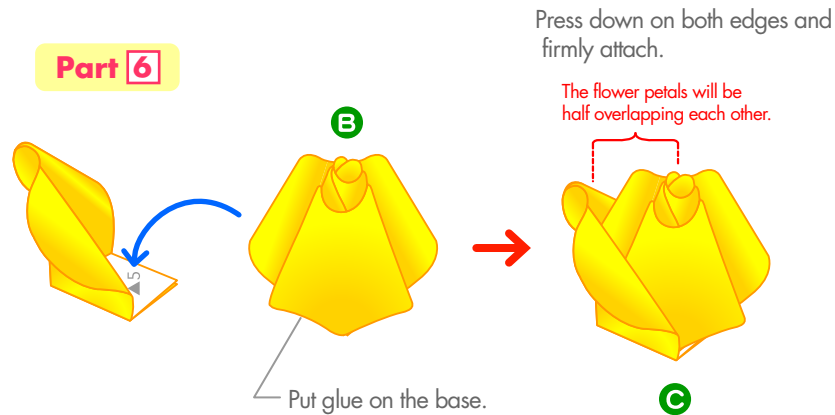
Put part **A** on top of the part **5** petal you made from step **2**, and glue it down.



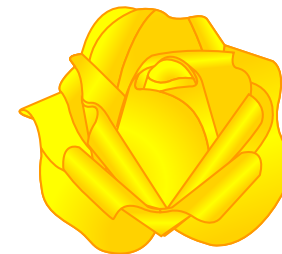
Put part **C** on top of the part **7** petal you made from step **2**, and glue it down.



Put part **B** on top of the part **6** petal you made from step **2**, and glue it down.



Attach all the petals in the same way.



# Canon Rose (Yellow) : Assembly Instructions

## Assembly procedure

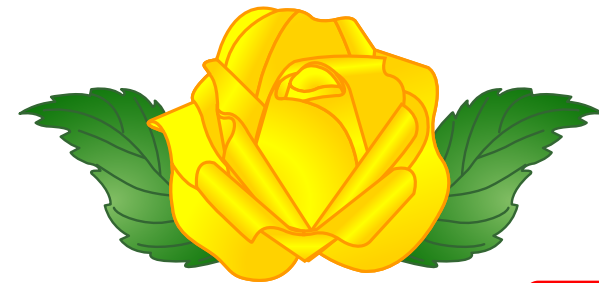
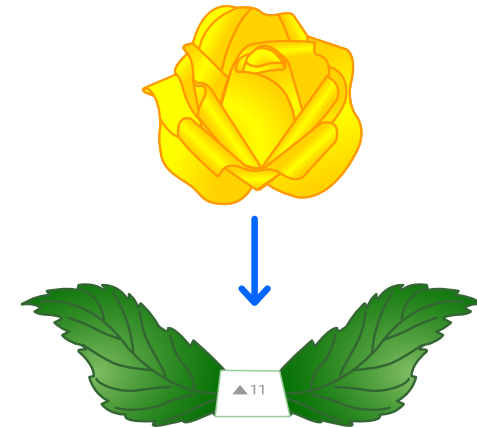
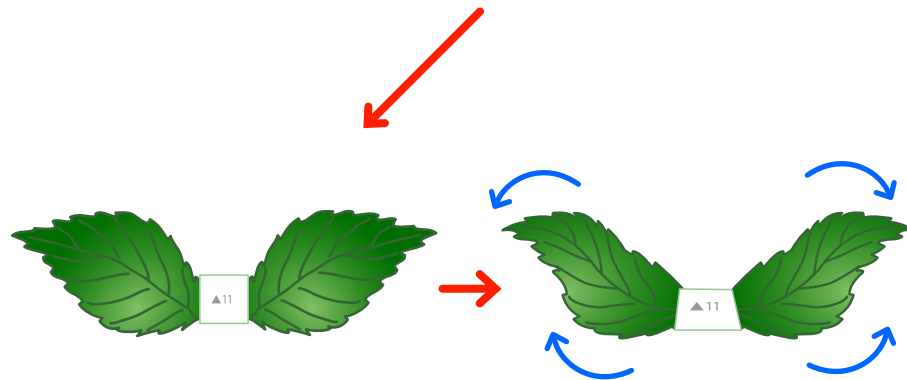
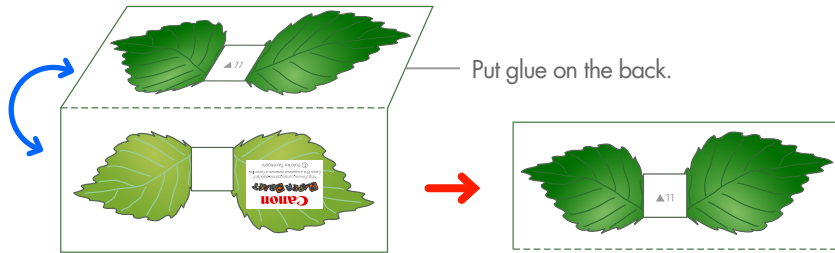
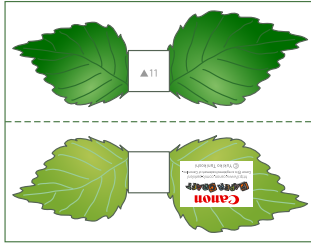
★STEP★

### 5 Glue the rose to the leaves

Put glue on the back of part 1, fold it outwards, and glue it down.  
Cut out the leaves following the lines, and curl them.

Glue the rose to the leaves made with part 1.

Part 1



Completed