

Canon Mini Roses : Assembly Instructions

Canon ® is a registered trademark of Canon Inc. © Canon Inc. © Yukiko Tanikoshi



You will need

scissors, paste, a used ballpoint pen (tracing along the fold lines makes them easier to fold)

Explanation of Symbols

▲ Numbered glue tabs

Glue the parts together in the order indicated by the numbers.



[Caution]

Glue, scissors and other tools may be dangerous to young children so be sure to keep them out of the reach of young children.

Assembly procedure

— Cut line - - - Mountain fold - · - · Valley fold — Slot

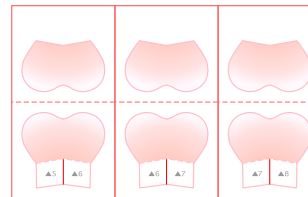
STEP

1 Making the Rose Petals

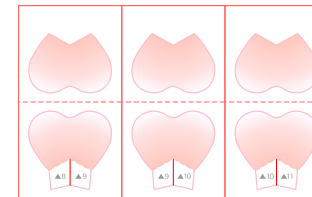
Glue the back of parts [5] to [14] and fold it outwards.

Cut out the petals following the lines. (Same for part No. for all colors)

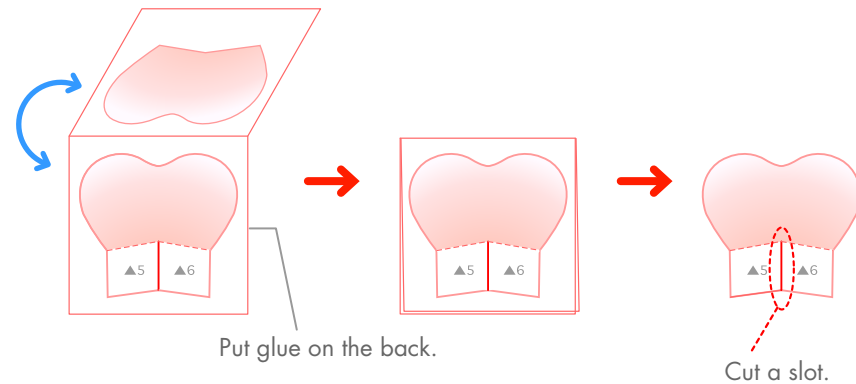
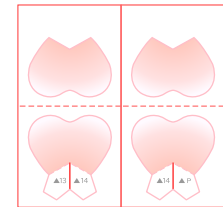
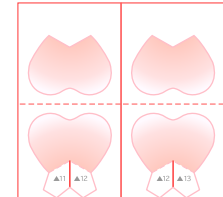
Part [5] ~ [7]



Part [8] ~ [10]



Part [11] ~ [14]



Canon Mini Roses : Assembly Instructions

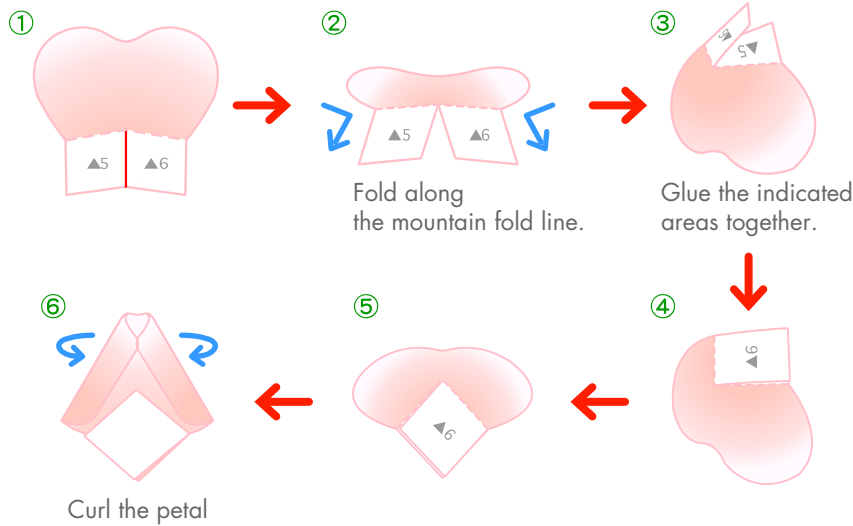
Canon ® is a registered trademark of Canon Inc. © Canon Inc. © Yukiko Tanikoshi

Assembly procedure

STEP 2 Making the Rose Petals

Assemble the petals using parts [5] to [7] (3 petals), and curl both edges of the petals inwards.

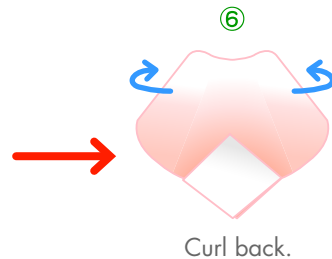
Part [5] ~ [7]



Assemble the petals using parts [8] to [14] (7 petals), and curl both edges of the petals outwards.

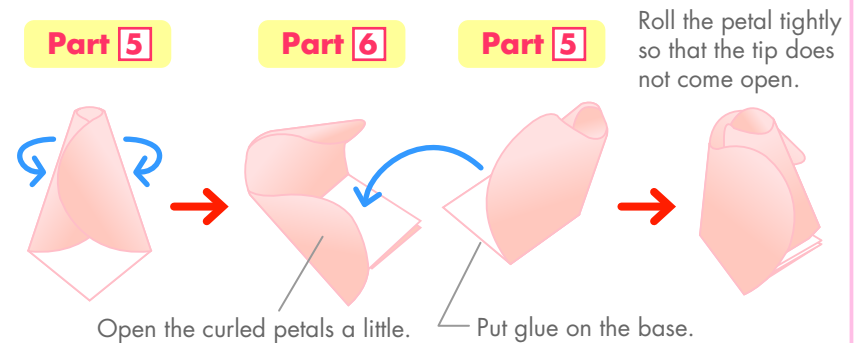
Part [8] ~ [14]

* To assemble, follow the same procedure as you did for parts [5] to [7] in steps ① to ⑤.

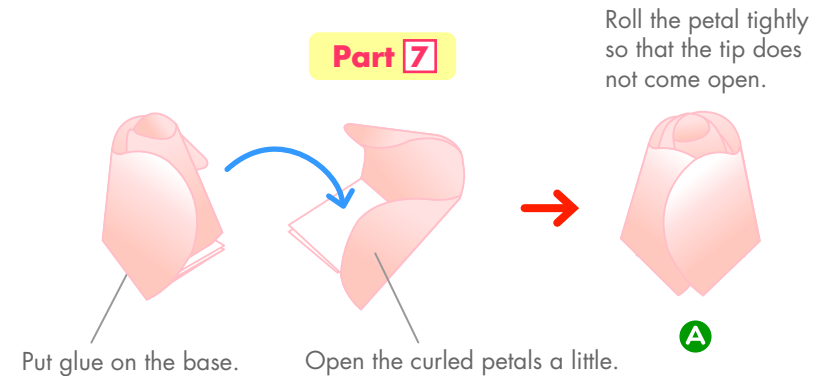


STEP 3 Making a Rose

Align the curled edges of the petal you made using part [5] in step ② together. Next, wrap the part [6] petal around the part [5] petal and glue them together.



Wrap the part [7] petal around the part [5] and [6] petals in the same way, and glue them together.



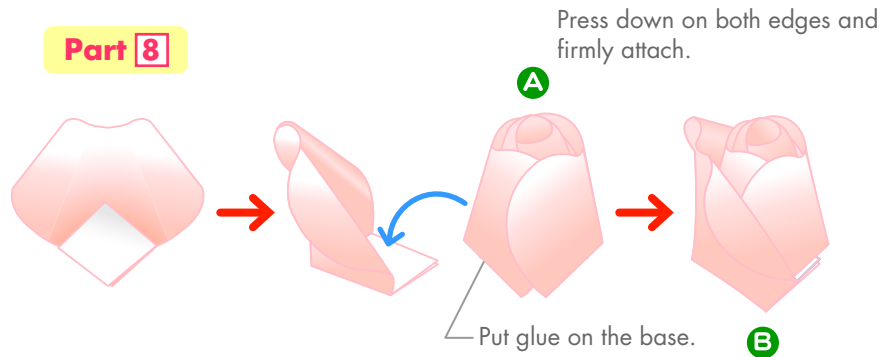
Canon Mini Roses : Assembly Instructions

Canon ® is a registered trademark of Canon Inc. © Canon Inc. © Yukiko Tanikoshi

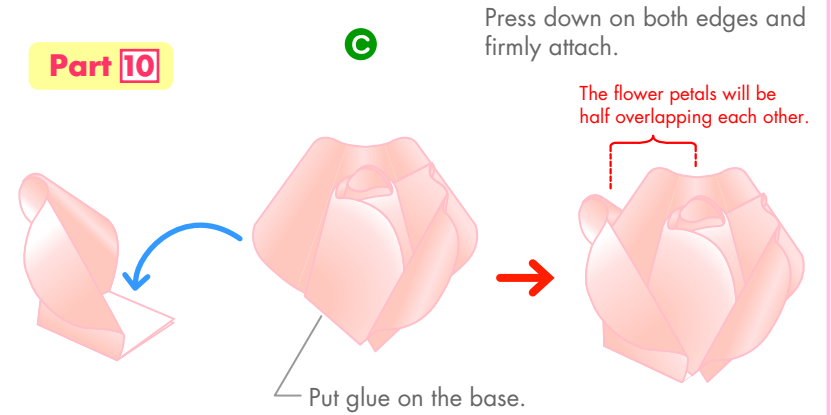
Assembly procedure

STEP 4 Making a Rose

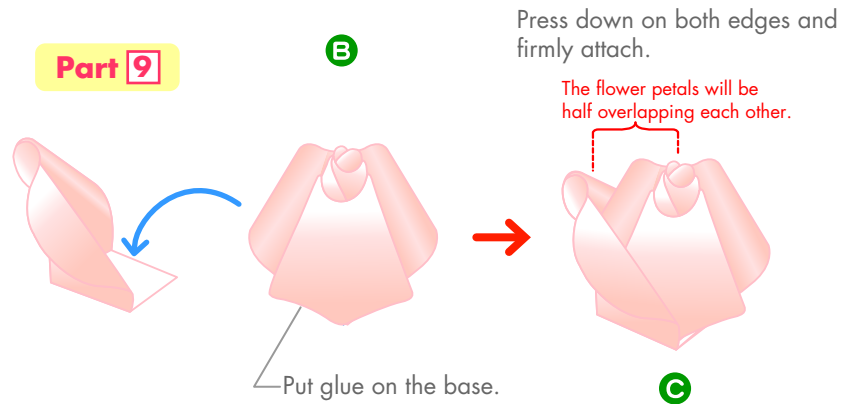
Put part **A** on top of the part **8** petal you made from step **2**, and glue it down.



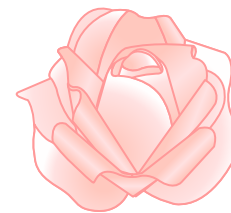
Put part **C** you made from step **4** on top of the part **10** petal you made from step **2**, and glue it down.



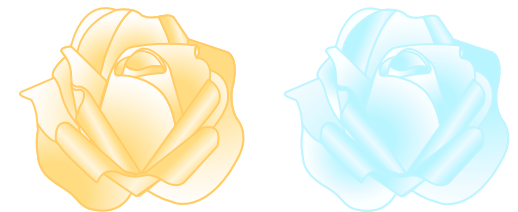
Put part **B** on top of the part **9** petal you made from step **2**, and glue it down.



Attach all the petals.



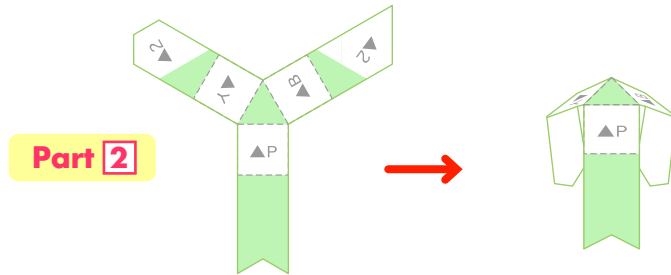
In the same way, complete the yellow and blue roses as well.



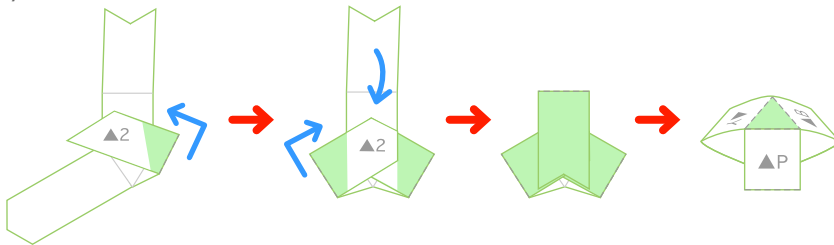
Assembly procedure

STEP 5 Making the base Rose Petals

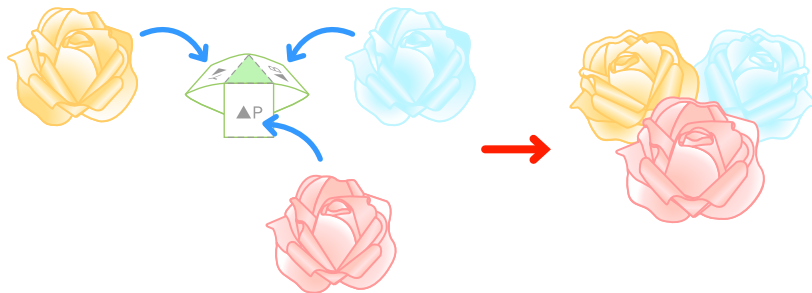
Make creases on Part 2.



Fold along on part 2 so that the colored side faces out, and glue on the indicated by the numbers.

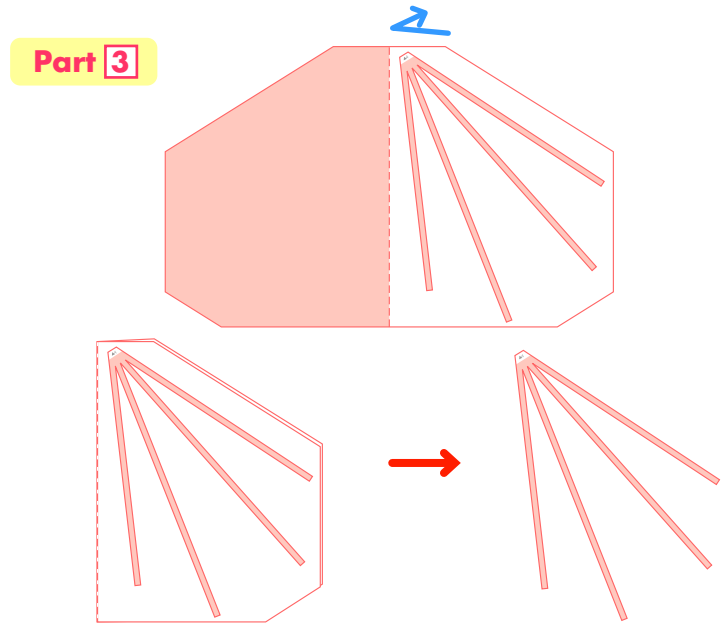


Glue the three colored roses from step 4 on part 2.

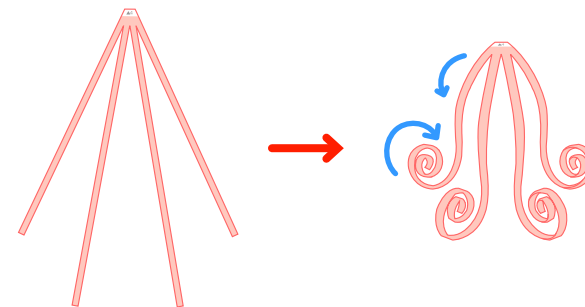


STEP 6 Making the Ribbon

Put glue on the back of part 3, fold it outwards, and glue it down. Cut out the lines.



Curl the ribbon in half.



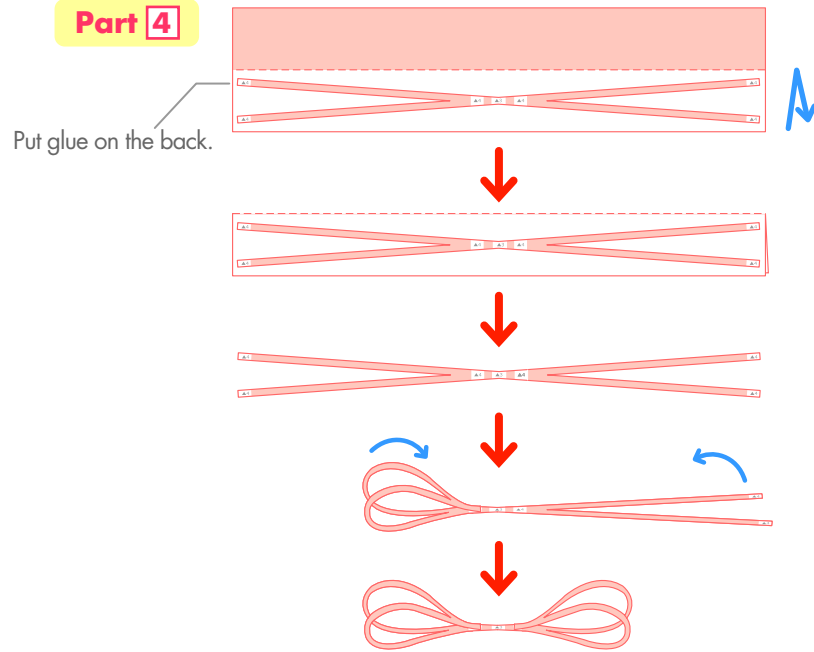
Canon Mini Roses : Assembly Instructions

Canon ® is a registered trademark of Canon Inc. © Canon Inc. © Yukiko Tanikoshi

Assembly procedure

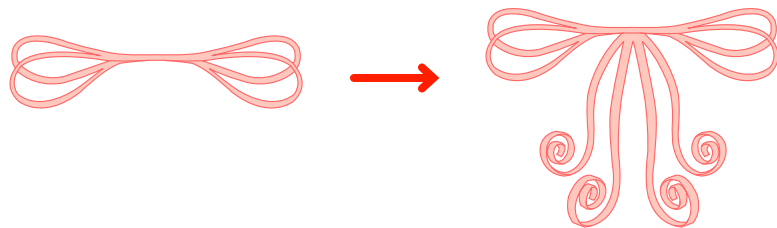
STEP 7 Making the Ribbon

Put glue on the back of part 4, fold it outwards, and glue it down. Cut out the lines.



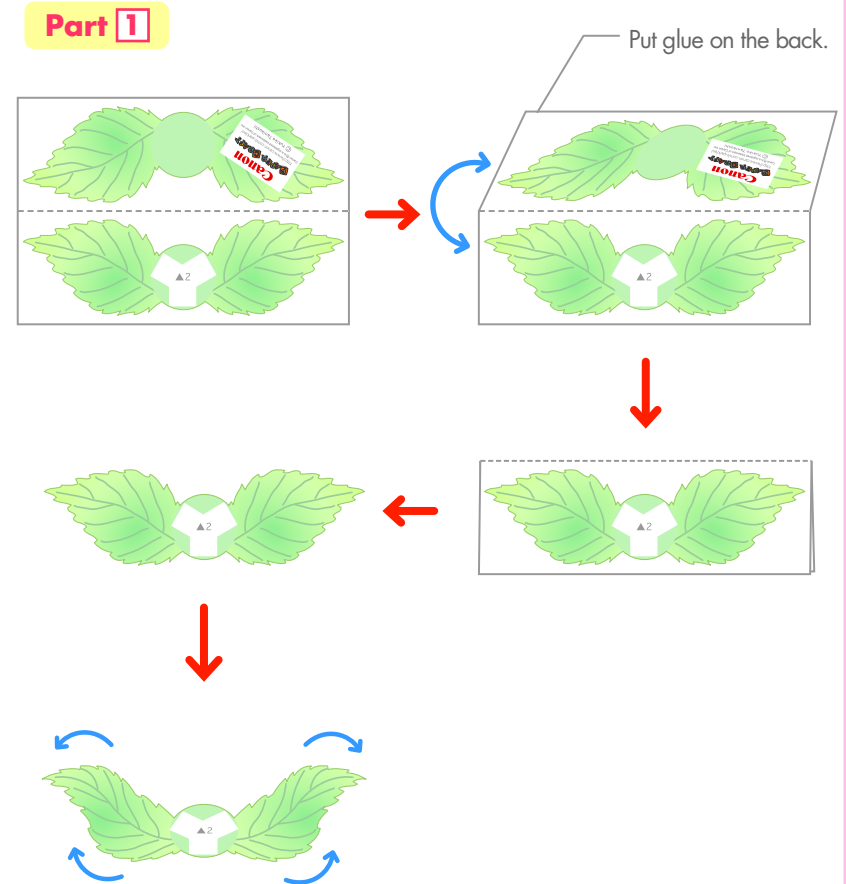
Turn it upside down so that the glued ribbon part is at the bottom.

Glue together the ribbon from 6.



STEP 8 Making the Rose leaves

Put glue on the back of part 1, fold it outwards, and glue it down. Cut out the leaves following the lines, and curl them.

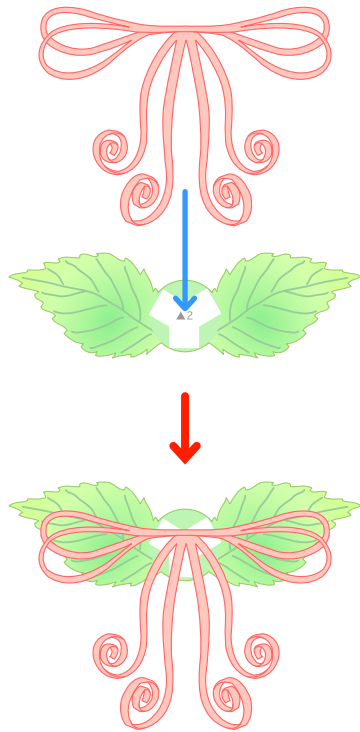


Assembly procedure

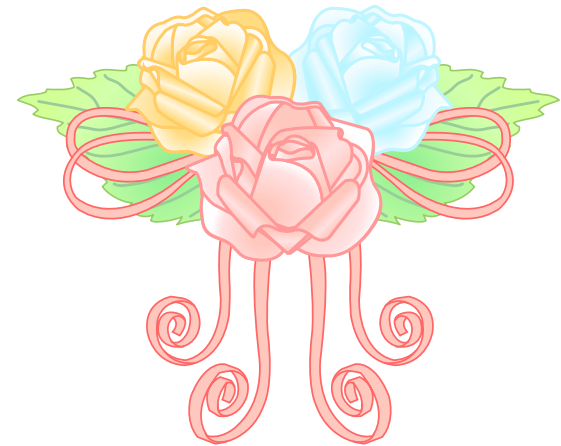
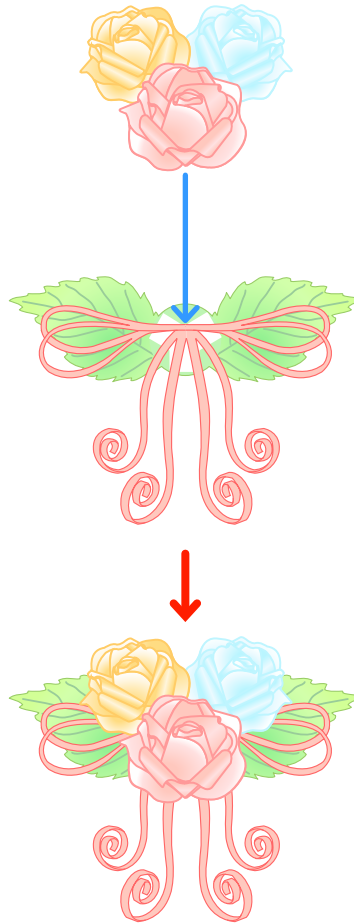
★STEP★

9 Join together the ribbon, leaf, and rose

Glue the ribbon from **7** onto the center of the leaf from **8**.



Attach the rose from **5**.



Completed