

Canon Mini Roses : Assembly Instructions

Canon® is a registered trademark of Canon Inc. © Canon Inc. © Yukiko Tanikoshi



You will need

scissors, paste, a used ballpoint pen (tracing along the fold lines makes them easier to fold)

Explanation of Symbols

▲ Numbered glue tabs

Glue the parts together in the order indicated by the numbers.



[Caution]

Glue, scissors and other tools may be dangerous to young children so be sure to keep them out of the reach of young children.

Assembly procedure

— Cut line - - - Mountain fold ····· Valley fold — Slot

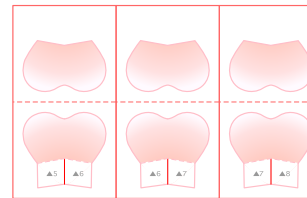
STEP

1 Making the Rose Petals

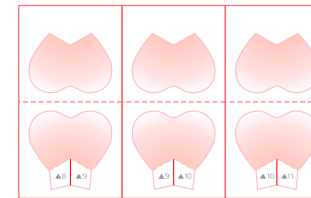
Glue the back of parts [5] to [14] and fold it outwards.

Cut out the petals following the lines. (Same for part No. for all colors)

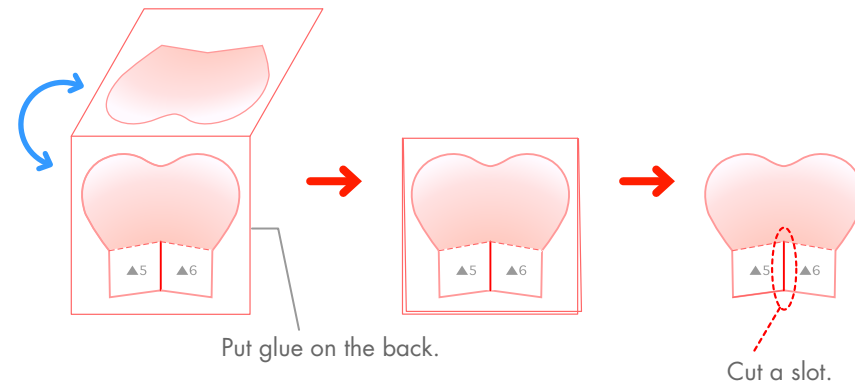
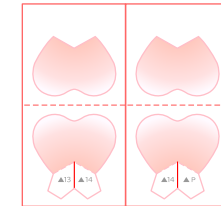
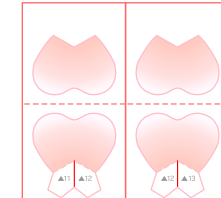
Part [5] ~ [7]



Part [8] ~ [10]



Part [11] ~ [14]



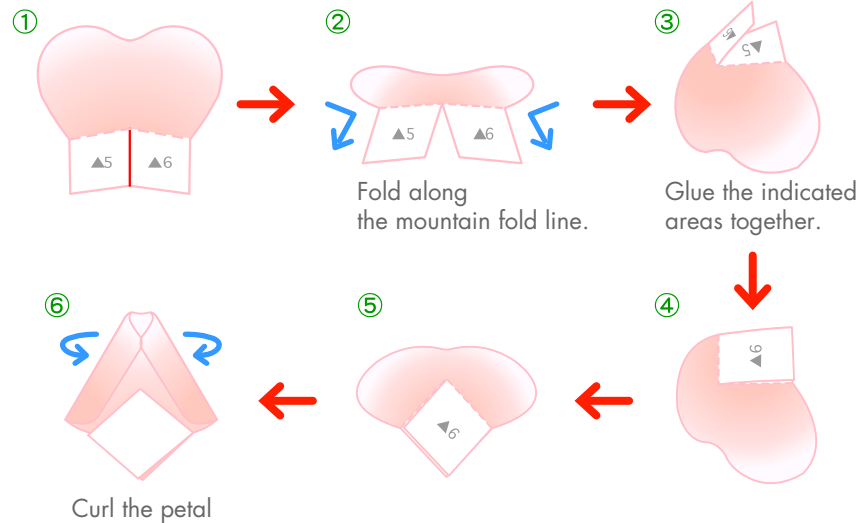
Assembly procedure

STEP

2 Making the Rose Petals

Assemble the petals using parts [5] to [7] (3 petals), and curl both edges of the petals inwards.

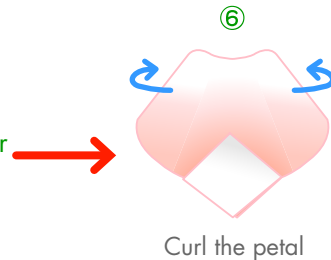
Part [5] ~ [7]



Assemble the petals using parts [8] to [14] (7 petals), and curl both edges of the petals outwards.

Part [8] ~ [14]

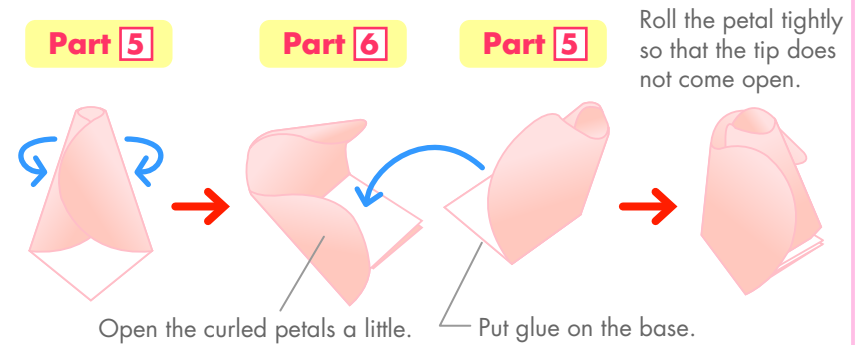
* Follow the same procedure as you did for parts [5] to [7] in steps ① to ⑤.



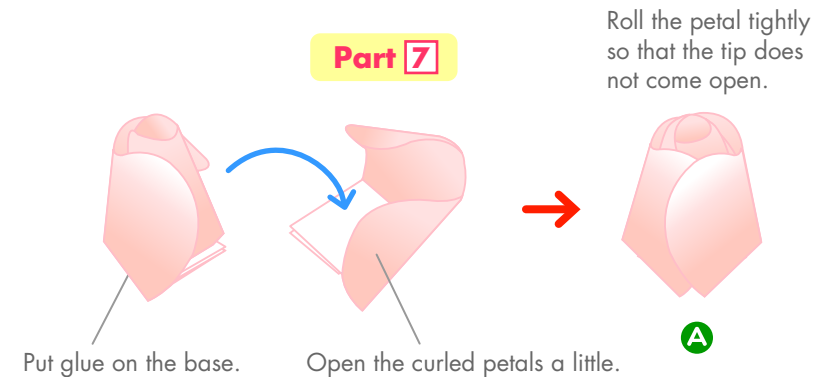
STEP

3 Making a Rose

Align the curled edges of the petal you made using part [5] in step ② together. Next, wrap the part [6] petal around the part [5] petal and glue them together.



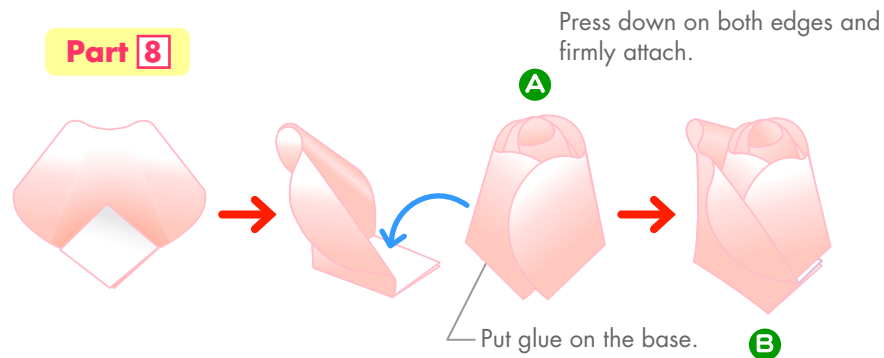
Wrap the part [7] petal around the part [5] and [6] petals in the same way, and glue them together.



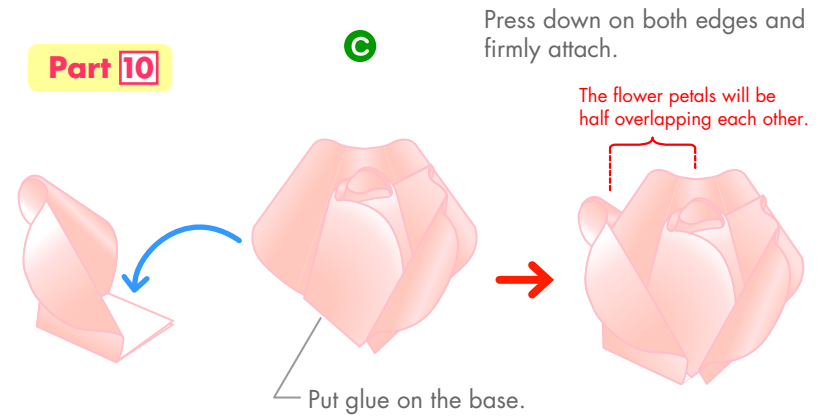
Assembly procedure

STEP 4 Making a Rose

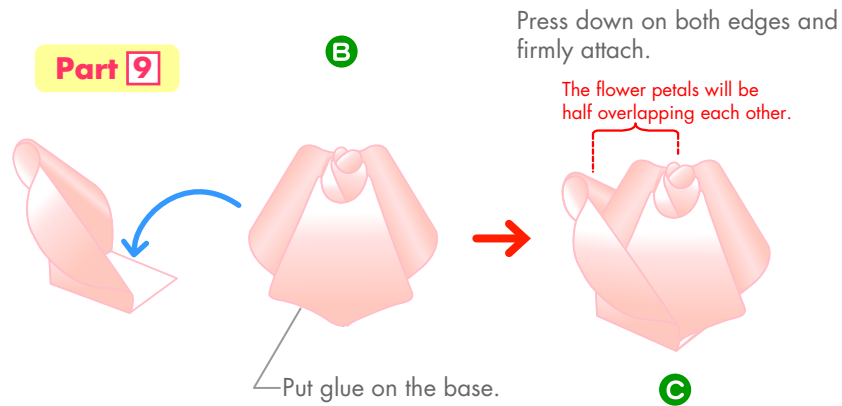
Put part **A** on top of the part **8** petal you made from step **2**, and glue it down.



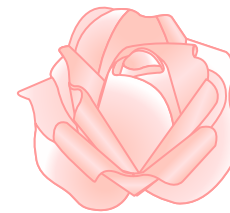
Put part **C** you made from step **4** on top of the part **10** petal you made from step **2**, and glue it down.



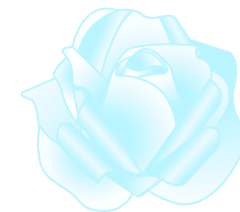
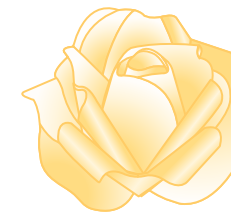
Put part **B** on top of the part **9** petal you made from step **2**, and glue it down.



Attach all the petals.



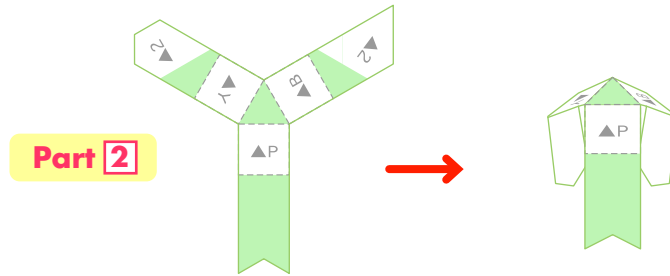
In the same way, complete the yellow and blue roses as well.



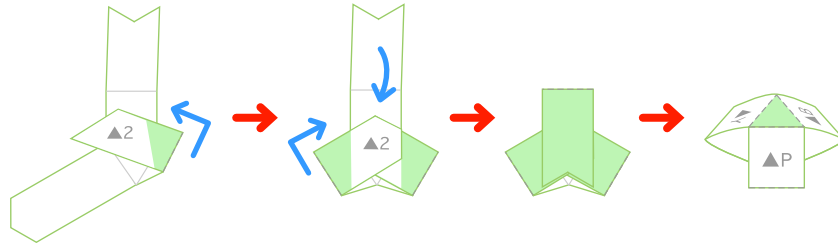
Assembly procedure

STEP 5 Making the base Rose Petals

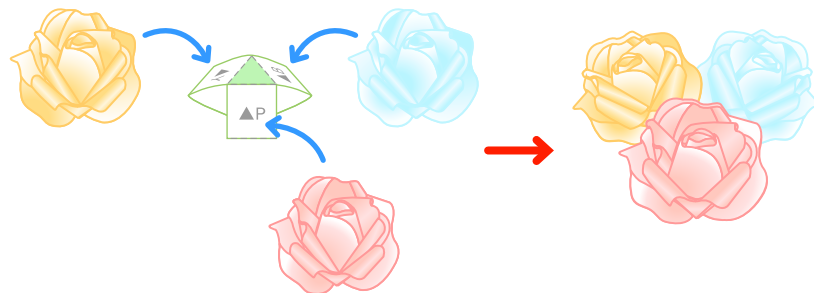
Make creases on Part [2].



Fold along on part [2] so that the colored side faces out, and glue on the indicated by the numbers.

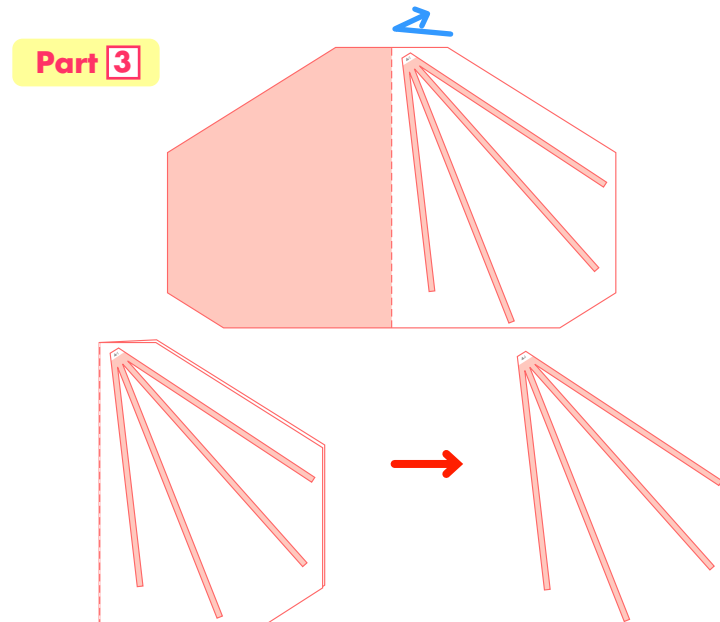


Glue the three colored roses from step [4] on part [2].

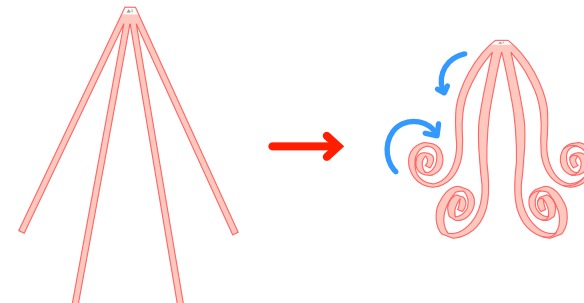


STEP 6 Making the Ribbon

Put glue on the back of part [3], fold it outwards, and glue it down. Cut out the lines.



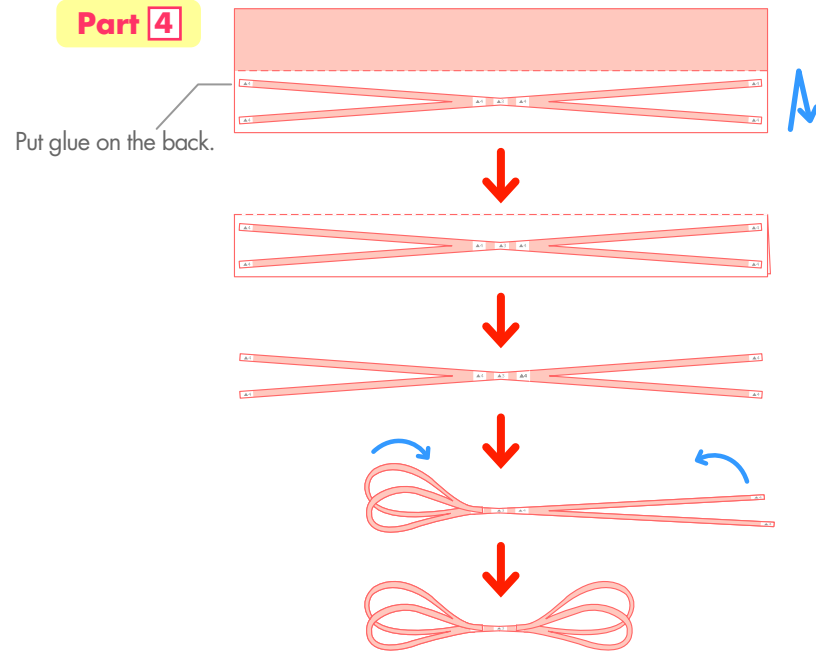
Curl the ribbon in half.



Assembly procedure

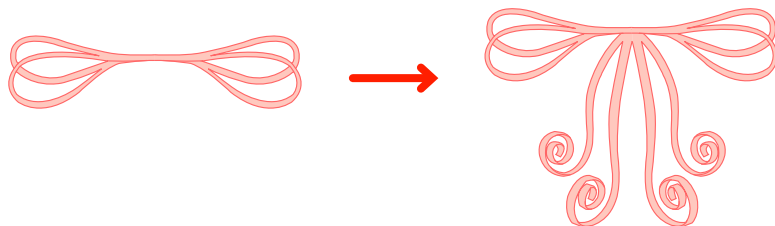
STEP 7 Making the Ribbon

Put glue on the back of part [4], fold it outwards, and glue it down.
Cut out the lines.



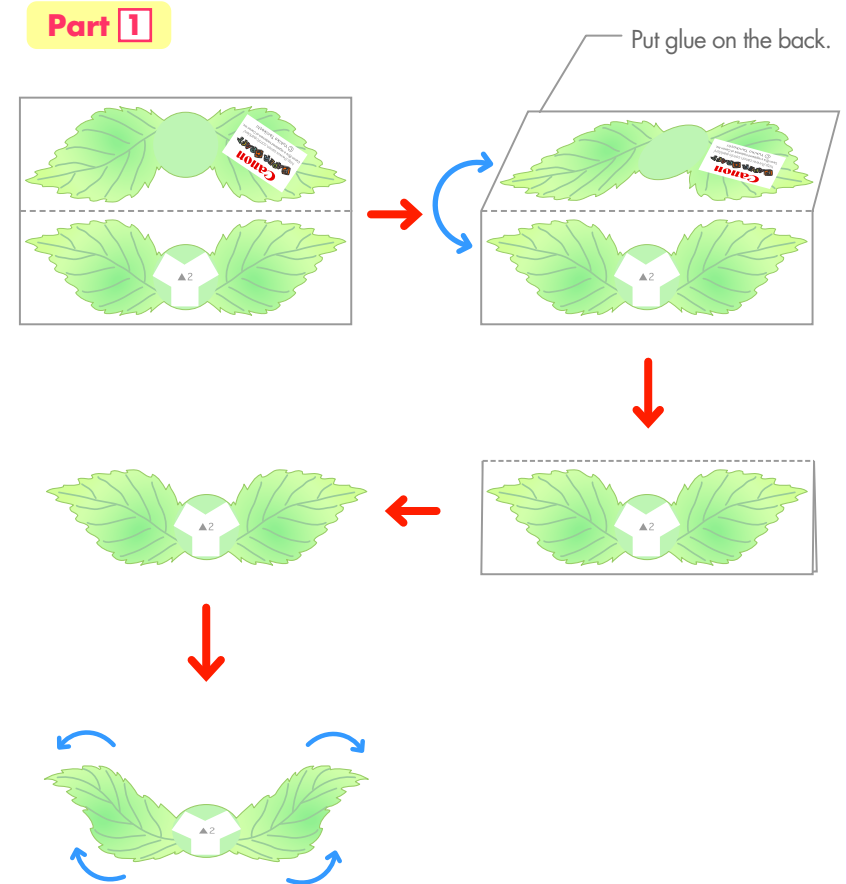
Turn it upside down so that the glued ribbon part is at the bottom.

Glue together the ribbon from [6].



STEP 8 Making the Rose leaves

Put glue on the back of part [1], fold it outwards, and glue it down.
Cut out the lines.

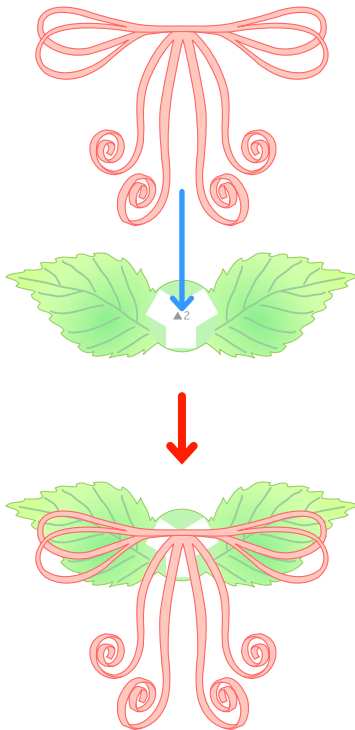


Assembly procedure

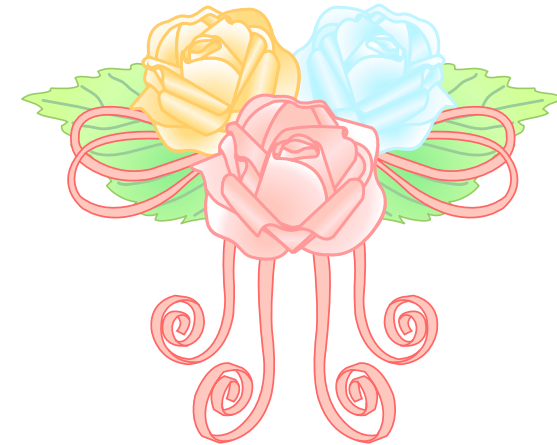
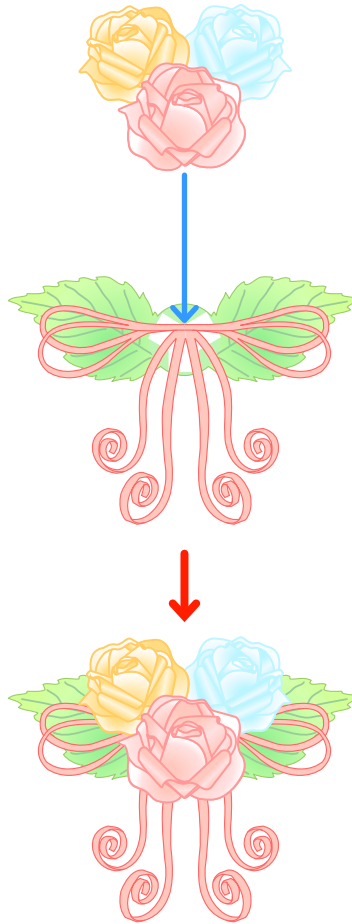
★STEP★

9 Join together the ribbon, leaf, and rose

Glue the ribbon from **7** onto the center of the leaf from **8**.



Attach the rose from **5**.



Completed