

Canon Carnation (Red) : Assembly Instructions

Canon ® is a registered trademark of Canon Inc. © Canon Inc. © Yukiko Tanikoshi



You will need

scissors, paste, a used ballpoint pen (tracing along the fold lines makes them easier to fold)

Explanation of Symbols

▲ Numbered glue tabs

Glue the parts together in the order indicated by the numbers.



[Caution]

Glue, scissors and other tools may be dangerous to young children so be sure to keep them out of the reach of young children.

Parts

— Cut line

- - - Mountain fold

- · - · - Valley fold

STEP

1 Making a Carnation

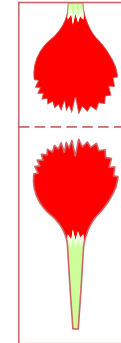
Put glue on the back of parts [1] to [3], fold along the line and attach them so that the picture faces outwards.

Follow the lines to cut out the petals (3 for part [1], 6 for part [2], and 6 for part [3]).

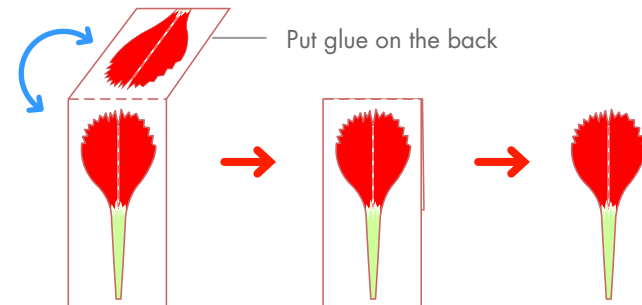
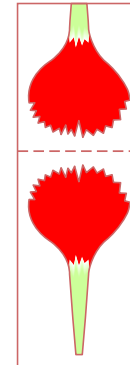
Part 1



Part 2



Part 3



Canon Carnation (Red) : Assembly Instructions

Canon ® is a registered trademark of Canon Inc. © Canon Inc. © Yukiko Tanikoshi

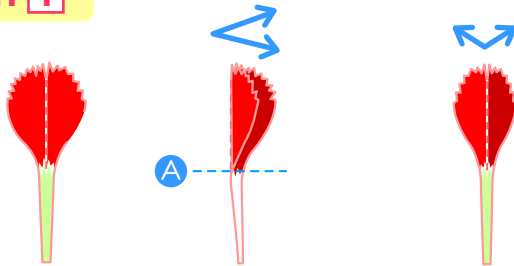
Assembly procedure

STEP

2 Making a Carnation

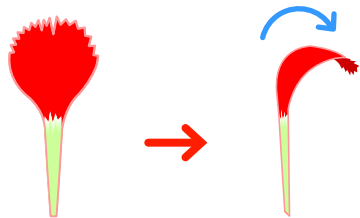
Fold the petals made from part 1 down as far as dotted line A (following the mountain fold line). *Repeat for all 3 petals.

Part 1

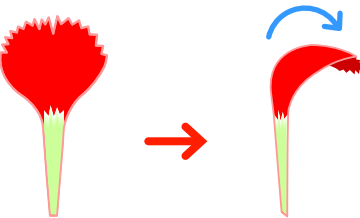


Curl all of the petals made from parts 2 and 3.

Part 2

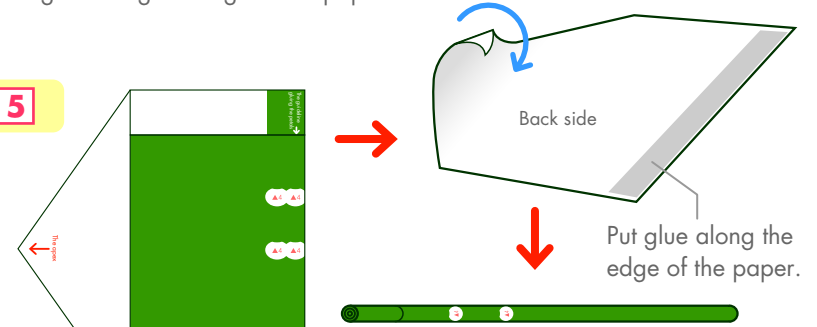


Part 3



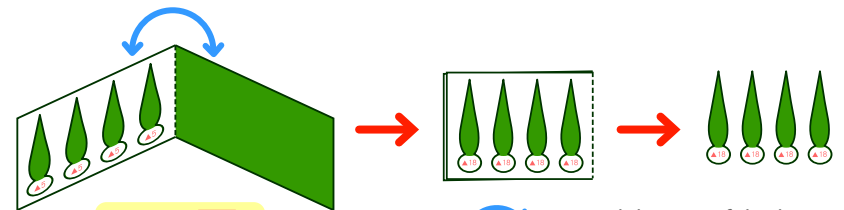
Starting from the apex, tightly roll up part 5 to make the stem. Put glue along the edge of the paper.

Part 5

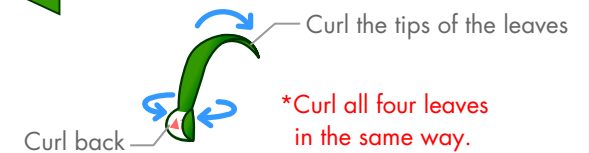


Roll the paper until the white area is completely hidden, and stick it down.

Put glue on the back of parts 4, fold along the line and attach them so that the picture faces outwards. Following the lines, cut out the four leaves.



Part 4



*Curl all four leaves in the same way.

Canon Carnation (Red) : Assembly Instructions

Canon ® is a registered trademark of Canon Inc. © Canon Inc. © Yukiko Tanikoshi

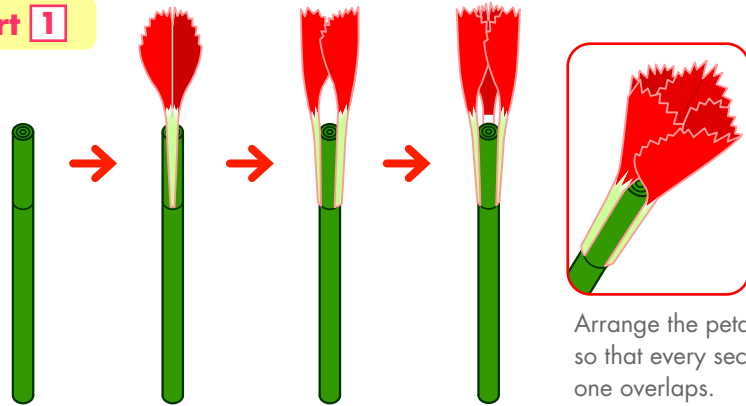
Assembly procedure

STEP

3 Making a Carnation

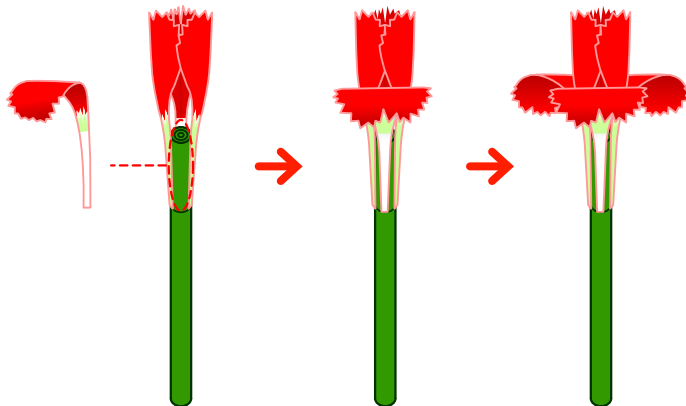
Glue the three petals you made using part **1**, evenly spaced around the top of the stem (above the guideline).

Part 1



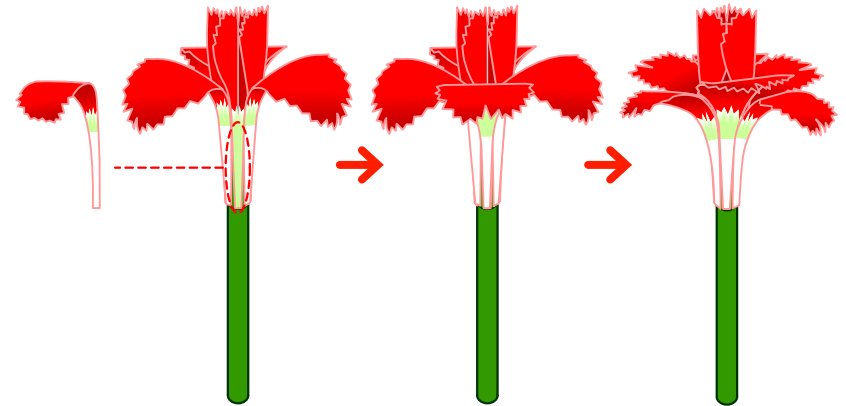
Glue three of the petals you made using part **2**, evenly spaced in between the three petals made from part **1**.

Part 2



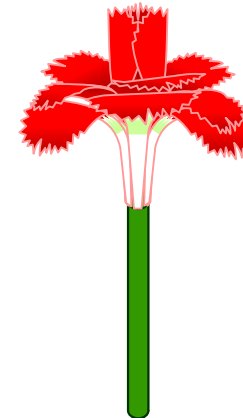
Attach the three remaining part **2** petals in between the other part **2** petals.

Part 2



Attach the six part **3** petals using the same process as for the part **2** petals.

Part 3



*The petal section of your carnation is now complete.

Canon Carnation (Red) : Assembly Instructions

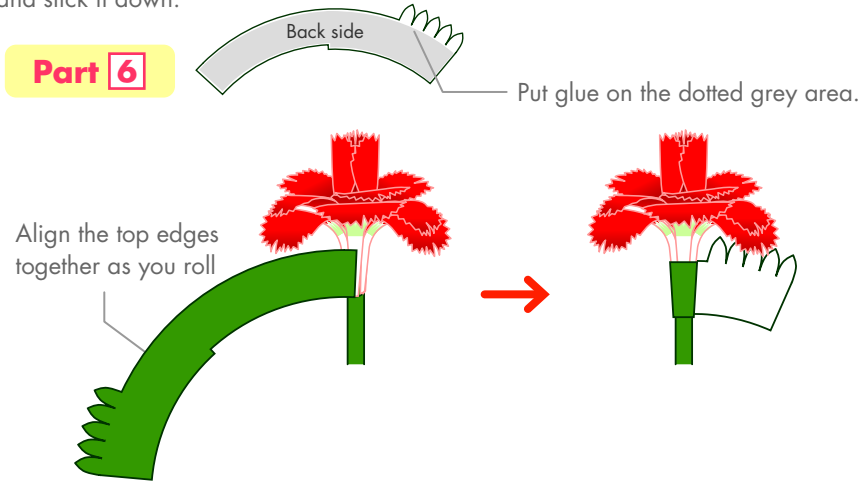
Canon ® is a registered trademark of Canon Inc. © Canon Inc. © Yukiko Tanikoshi

Assembly procedure

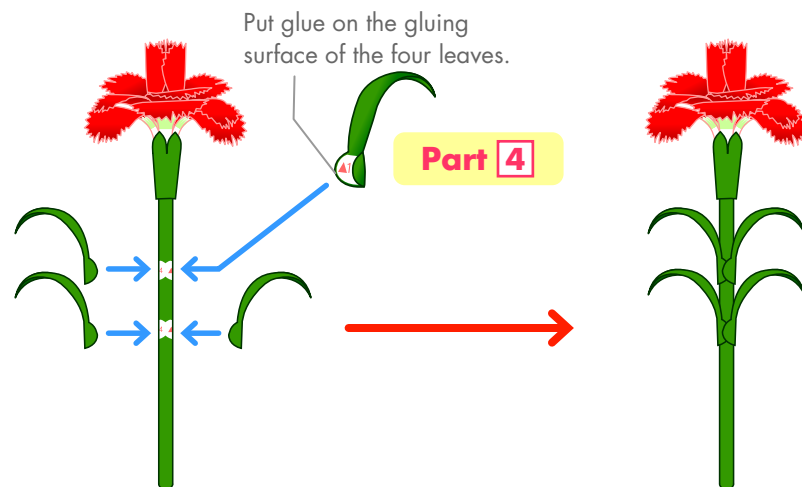
★STEP★

4 Making a Carnation

Following the guideline on the stem, tightly roll part [6] around the stem and stick it down.



Attach the four curled leaves you made with part [4], to part [5].



Fold the message card (part [7]) in half, and cut along the line to remove the stripy section. Using the slot you have cut, attach the card around the stem of the carnation.

