

## PAPER CRAFT

<http://www.canon.com/c-park/en/>



View of completed model

### Halloween tree

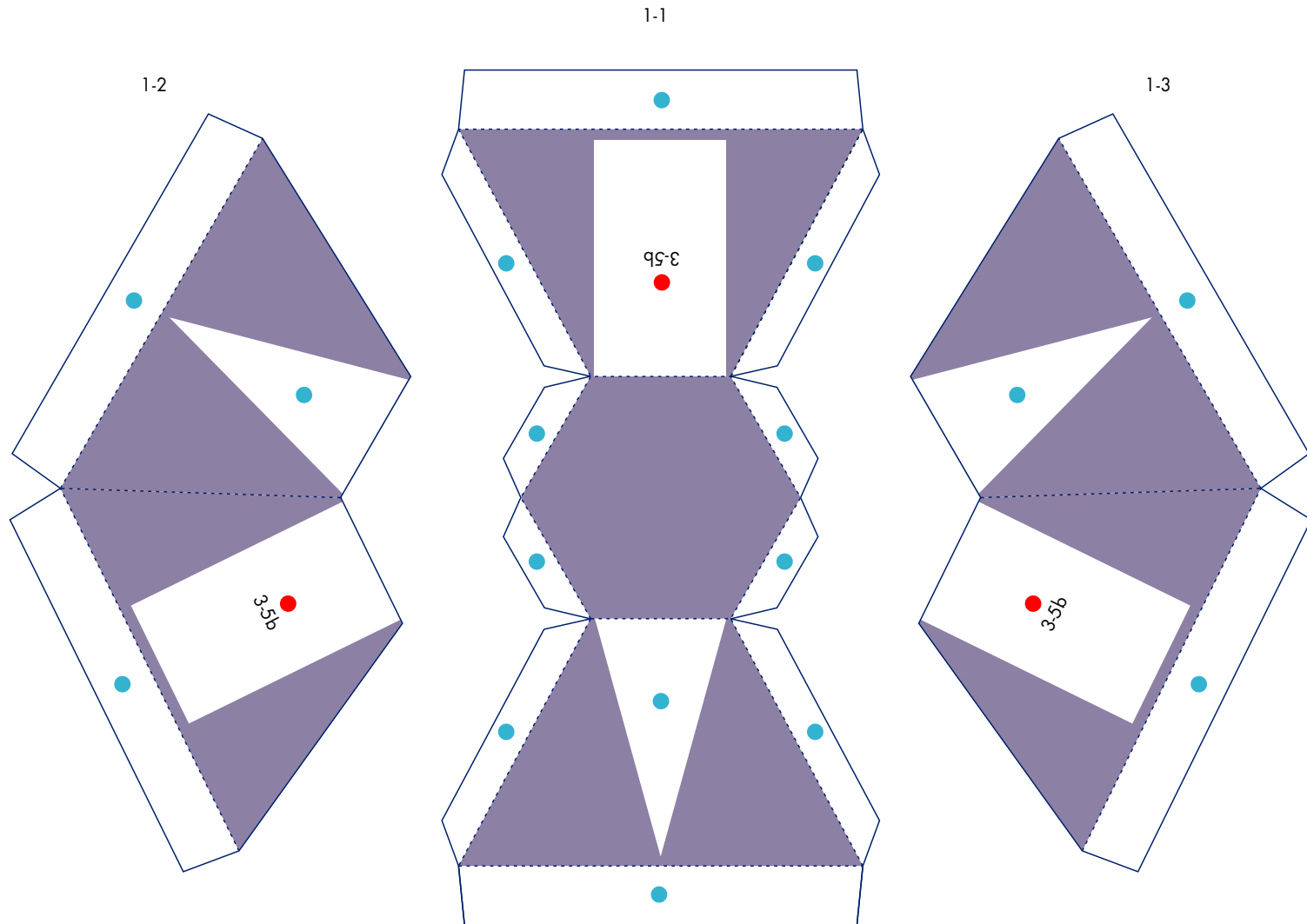
Halloween is a Christian tradition that takes place on October 31. On this fun holiday, children wear costumes and visit their neighbors to receive candy, and parties are held, decorated with jack-o'-lanterns carved from pumpkins. This Halloween tree is a modified version of the traditional Christmas tree. With goblins and jack-o'-lanterns adorning a spooky withered tree reminiscent of gothic horror stories, this model adds a colorful touch to any interior.

■ Parts list (pattern) : Eighteen US letter sheets (No. 1 to No. 18)

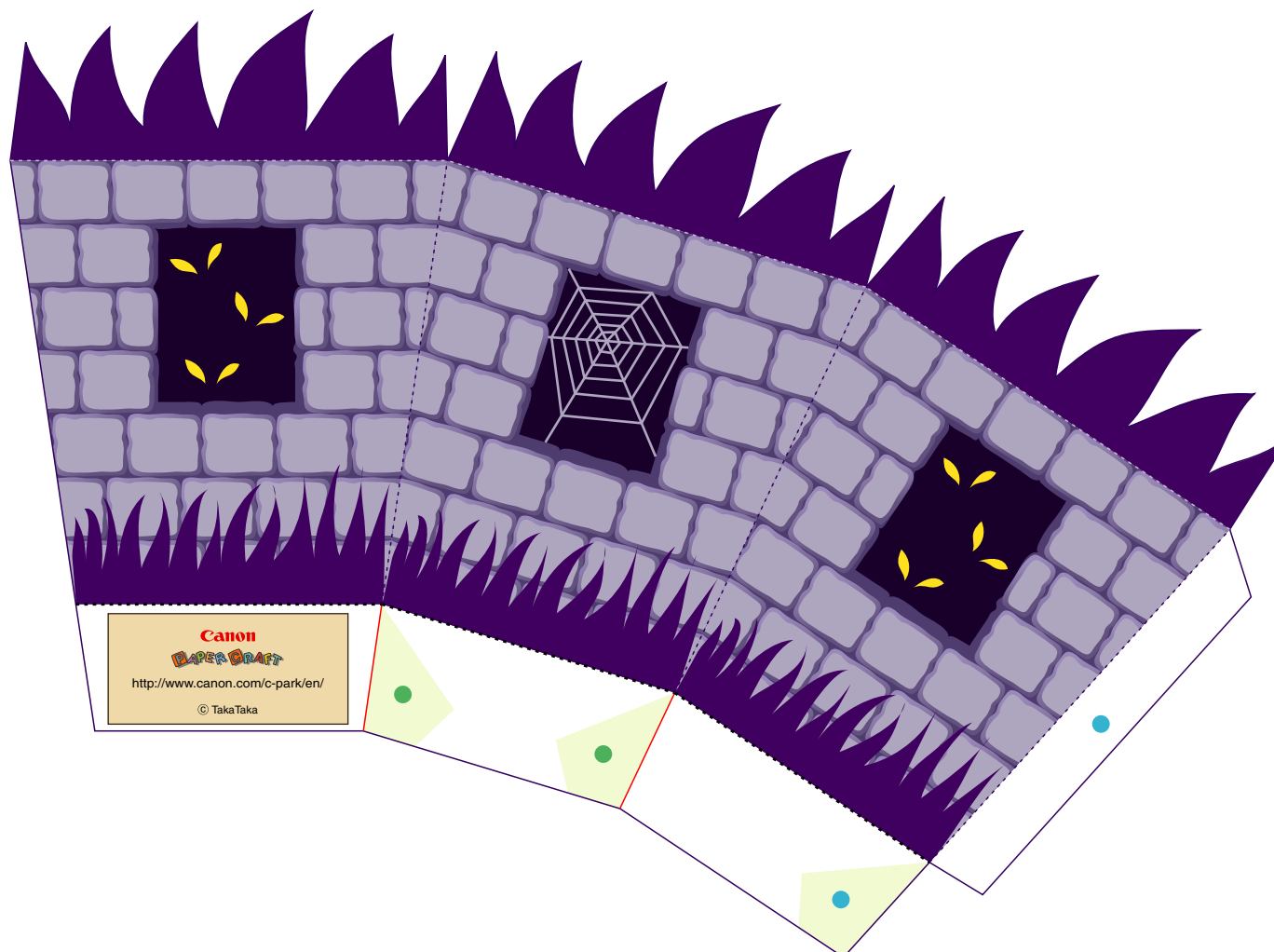
■ No. of Parts : 44

\* Build the model by carefully reading the Assembly Instructions , in the parts sheet page order.

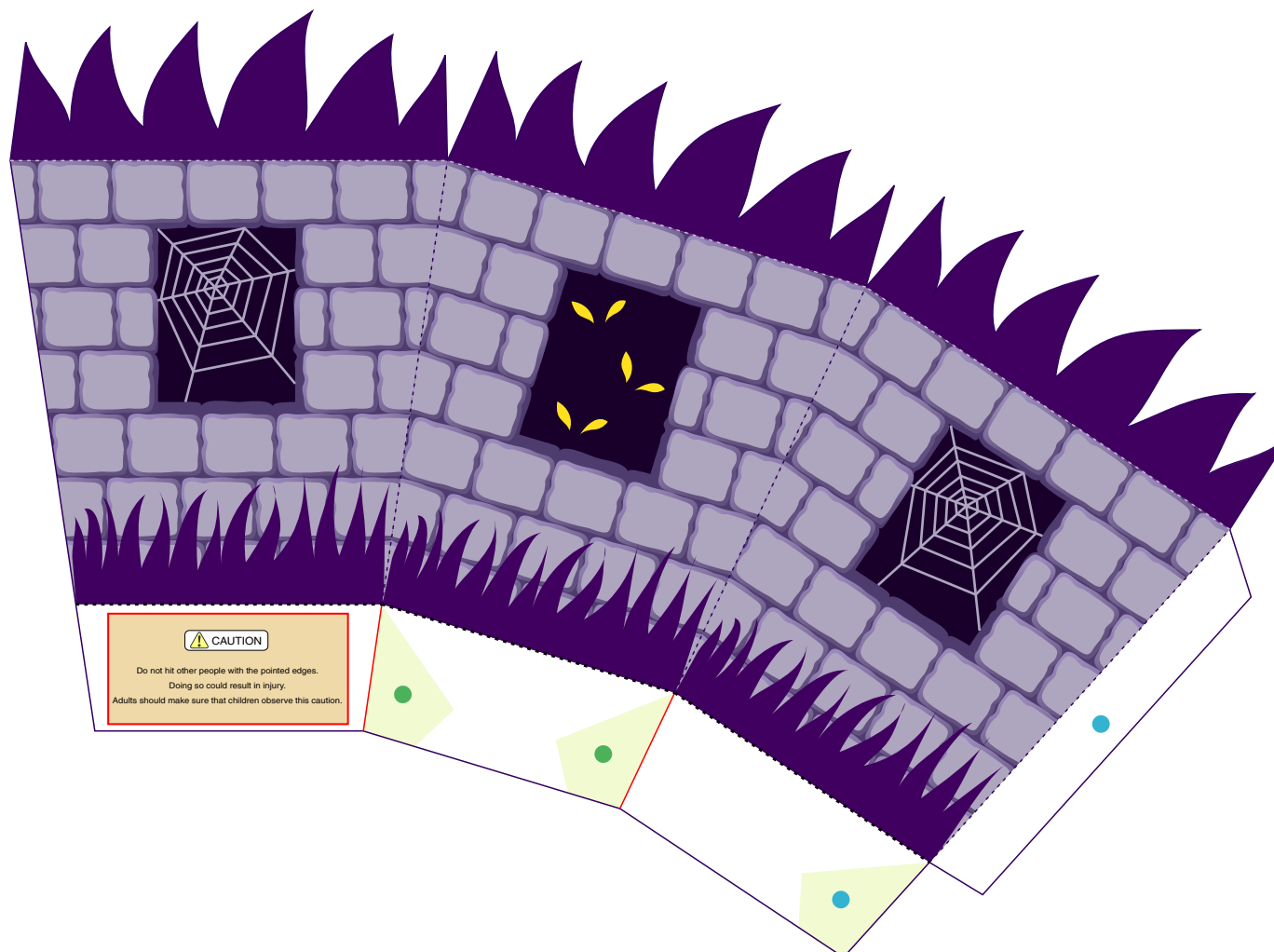


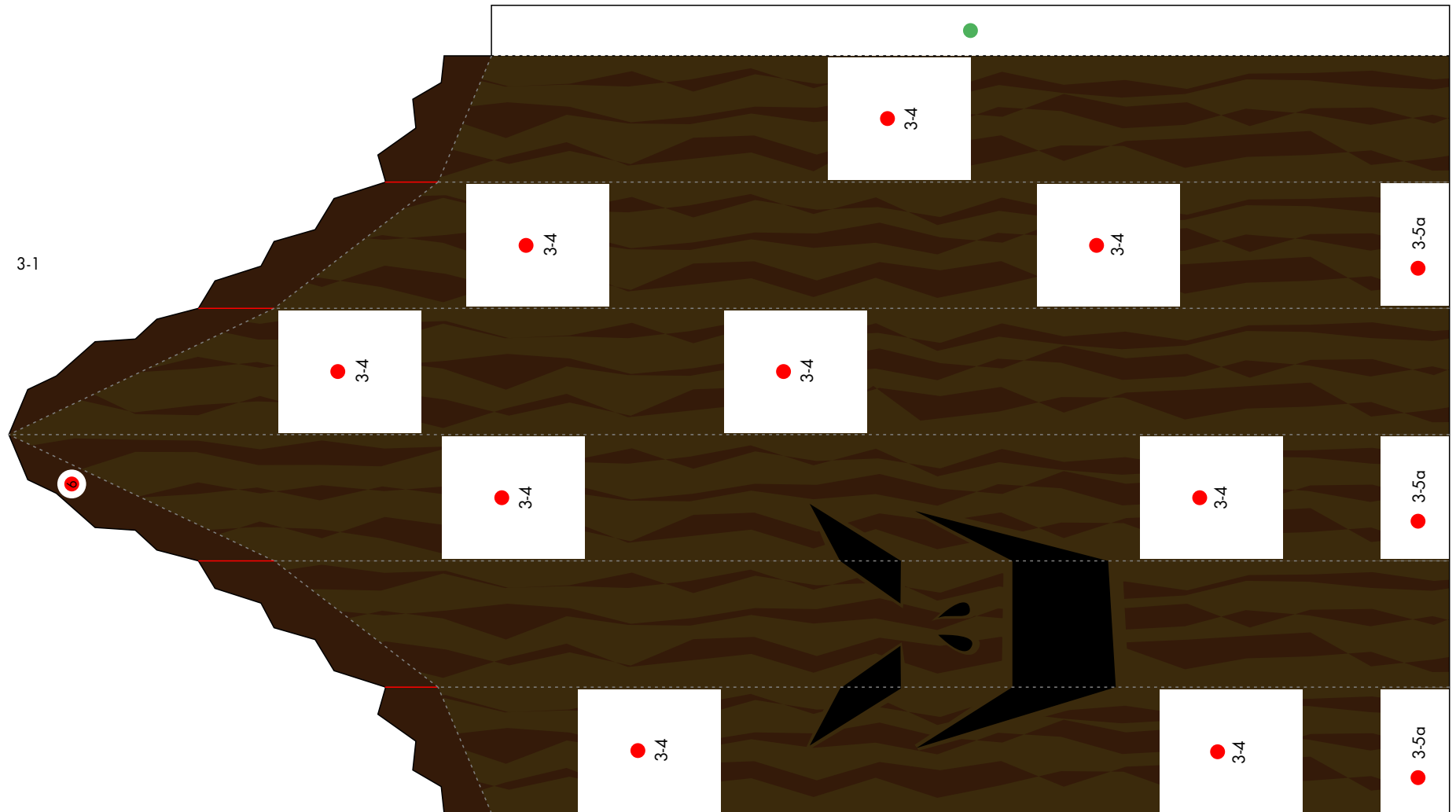


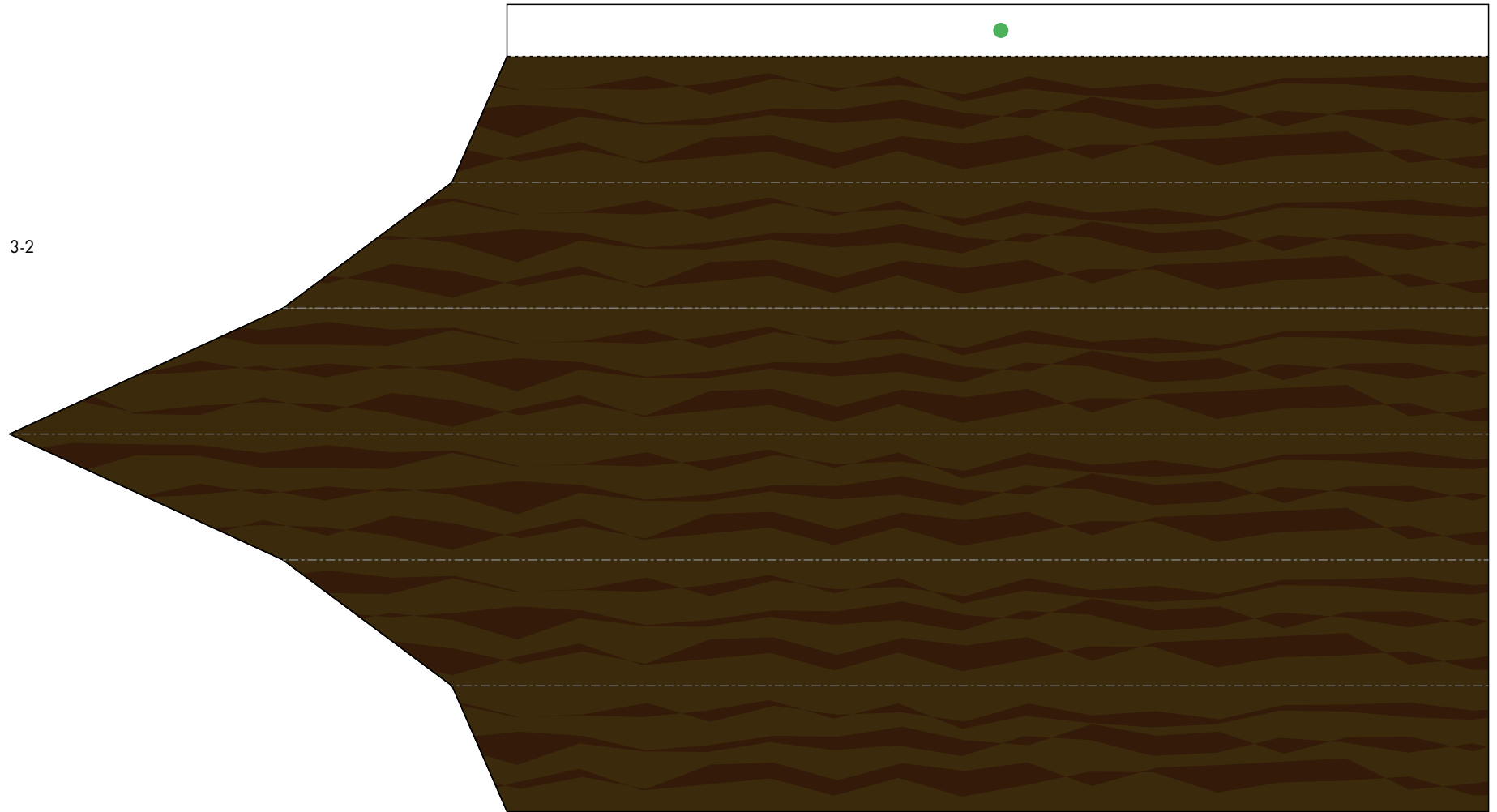
2-1



2-2







3-3



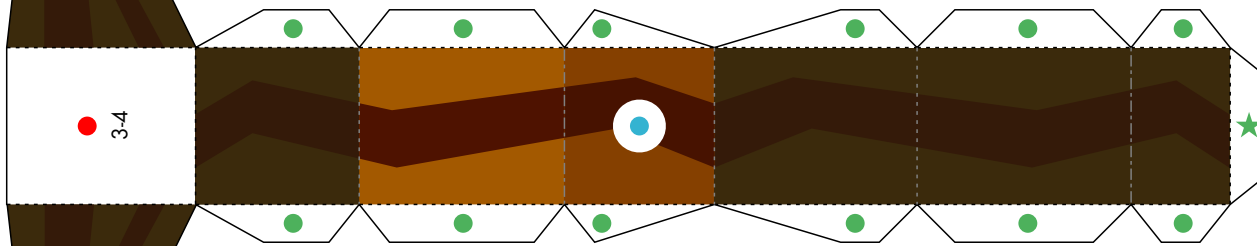
3-3



3-3

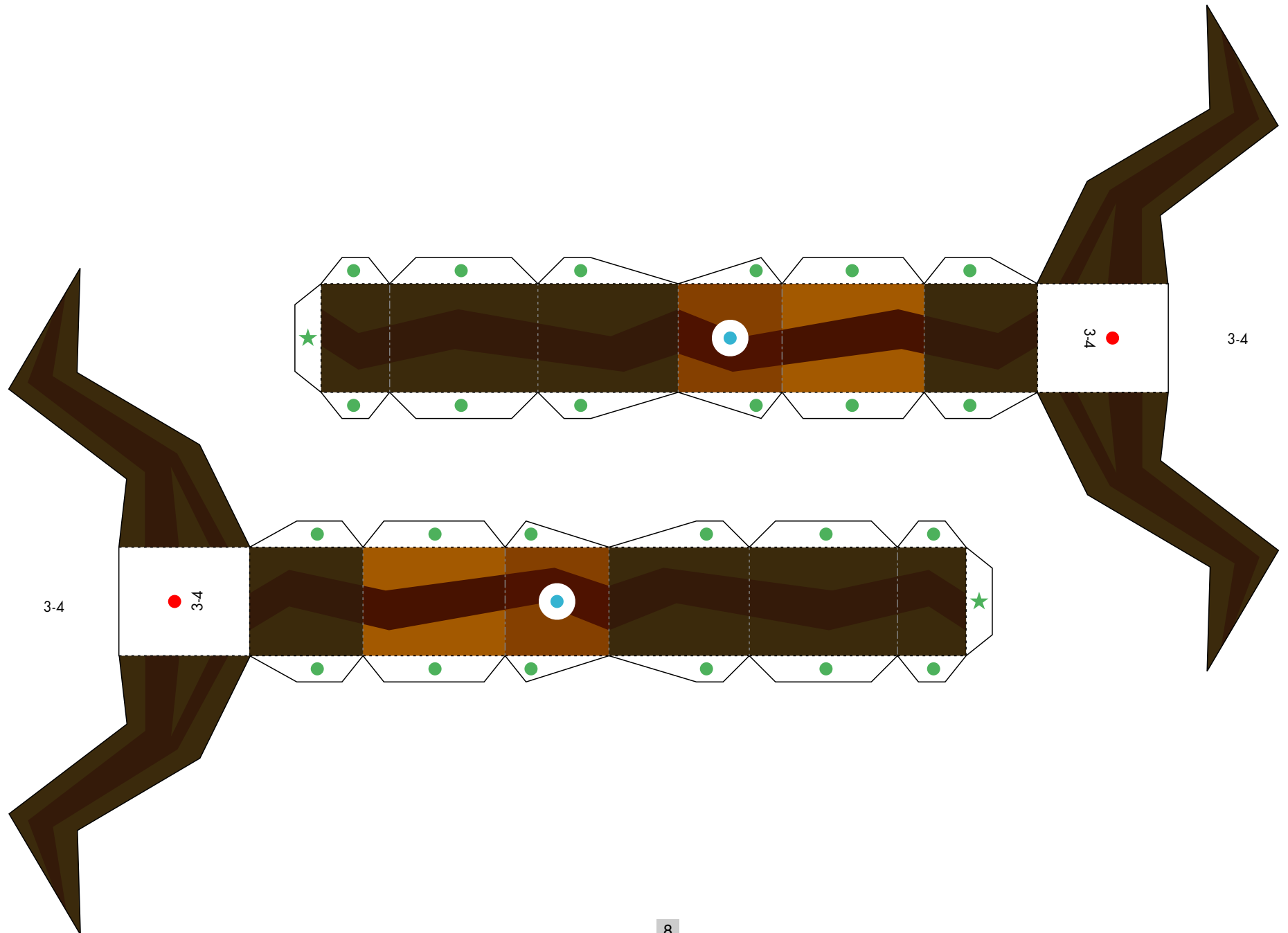


3-4



# Halloween tree : Pattern

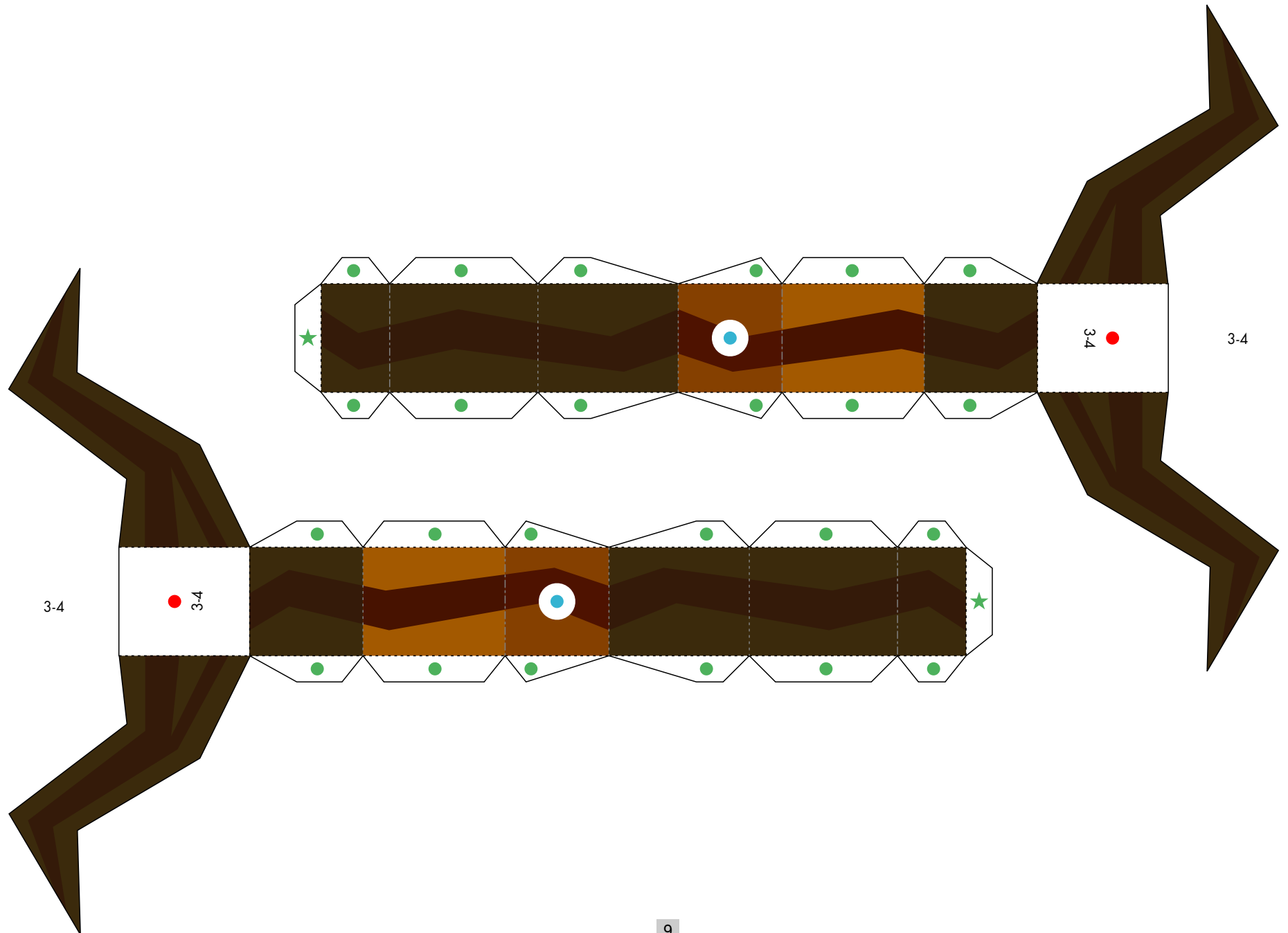
© Canon Inc. © TakaTaka





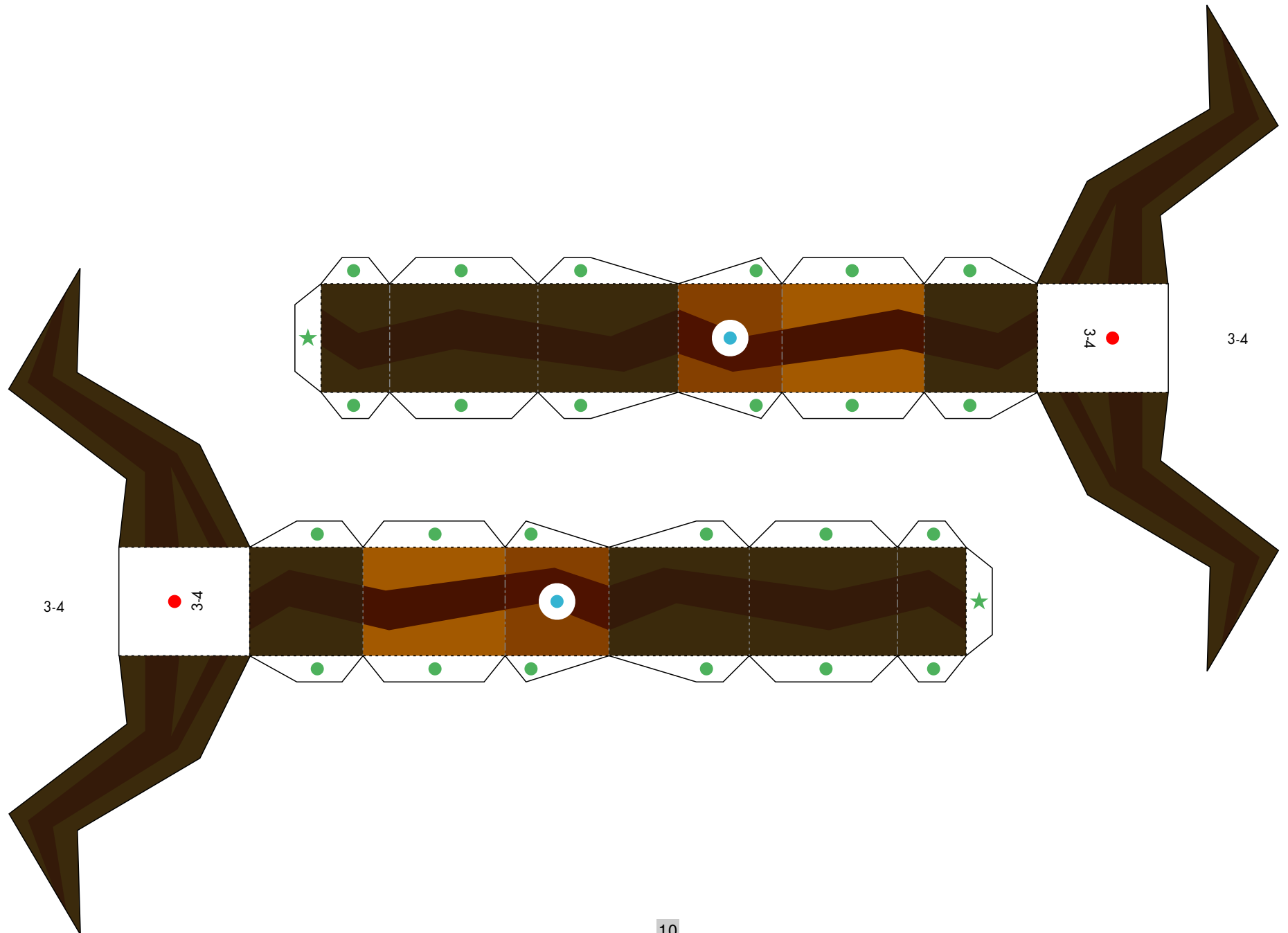
# Halloween tree : Pattern

© Canon Inc. © TakaTaka



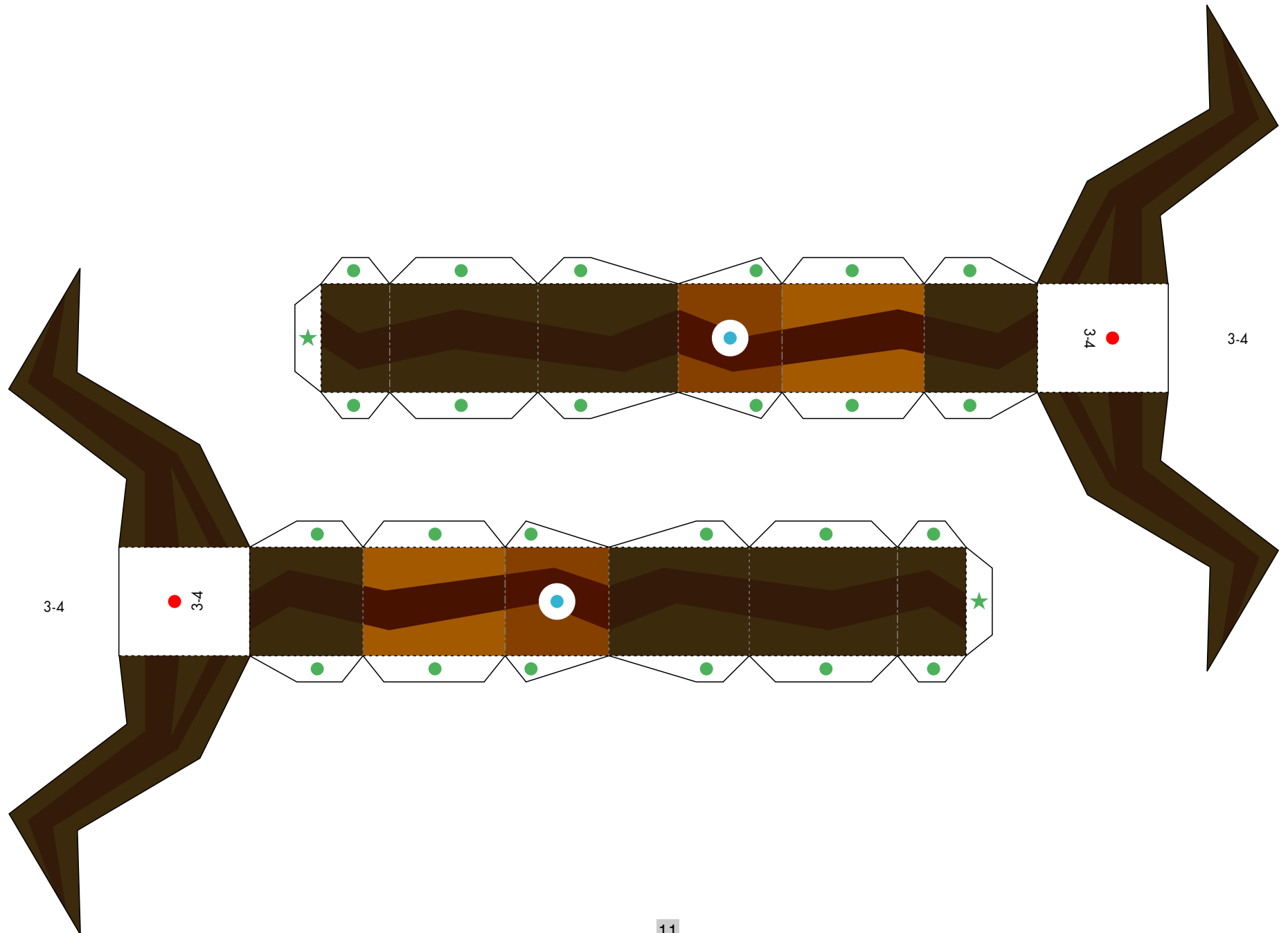
# Halloween tree : Pattern

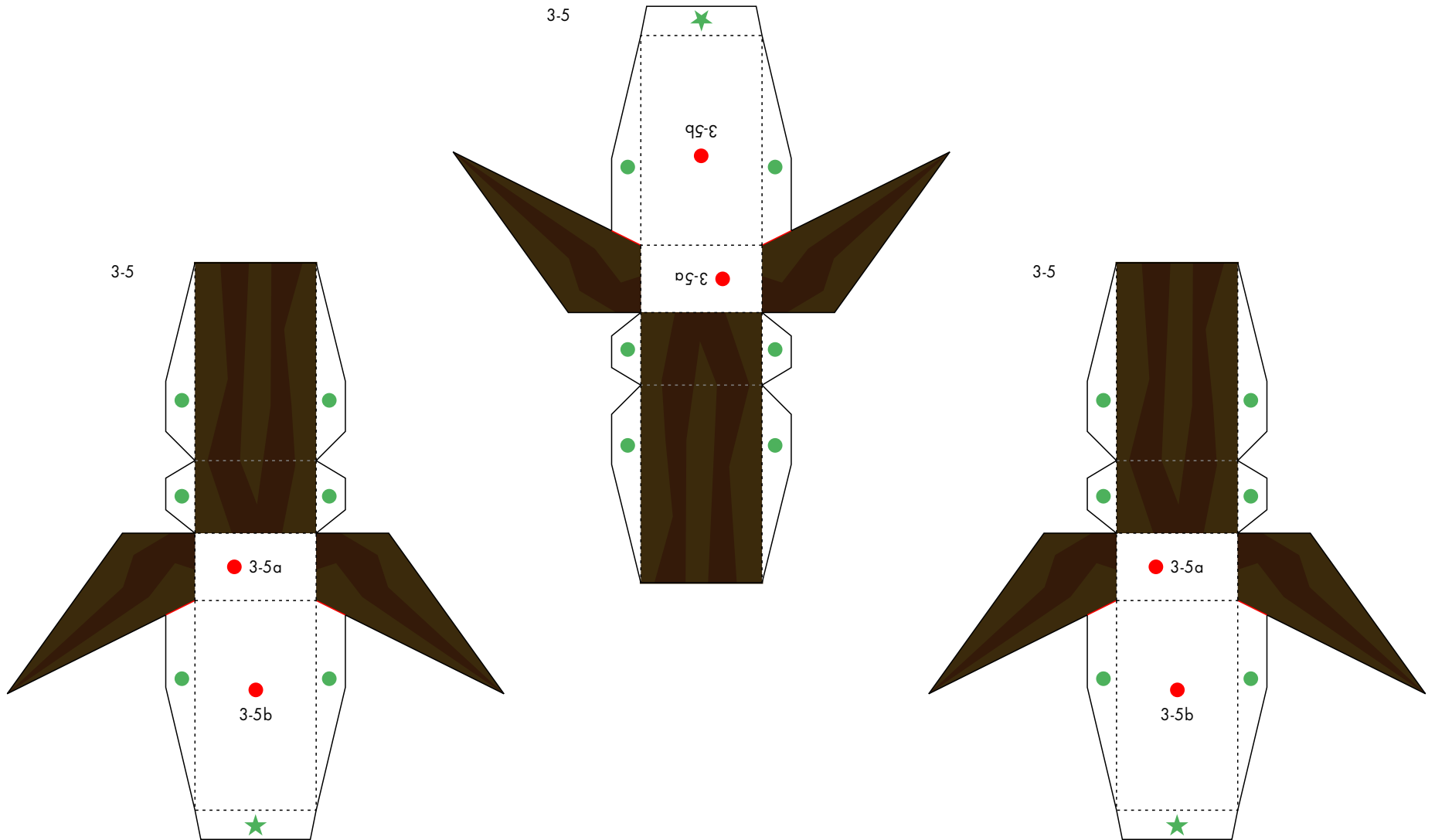
© Canon Inc. © TakaTaka

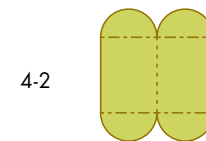
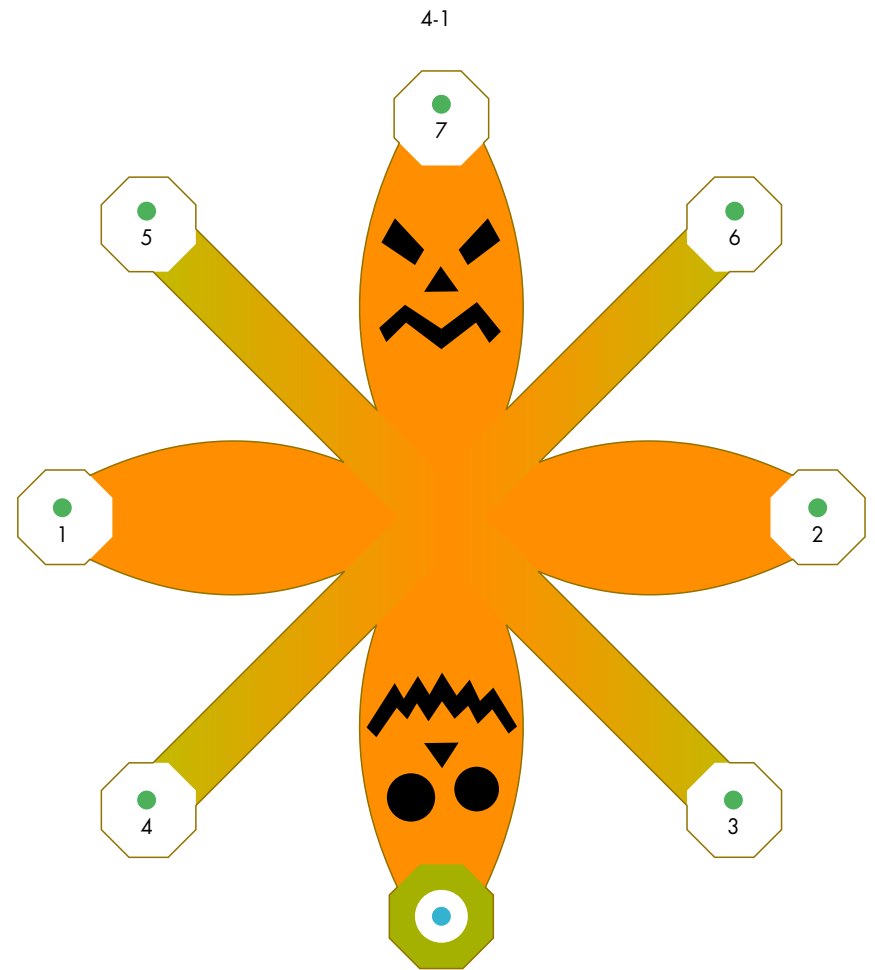
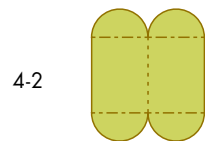
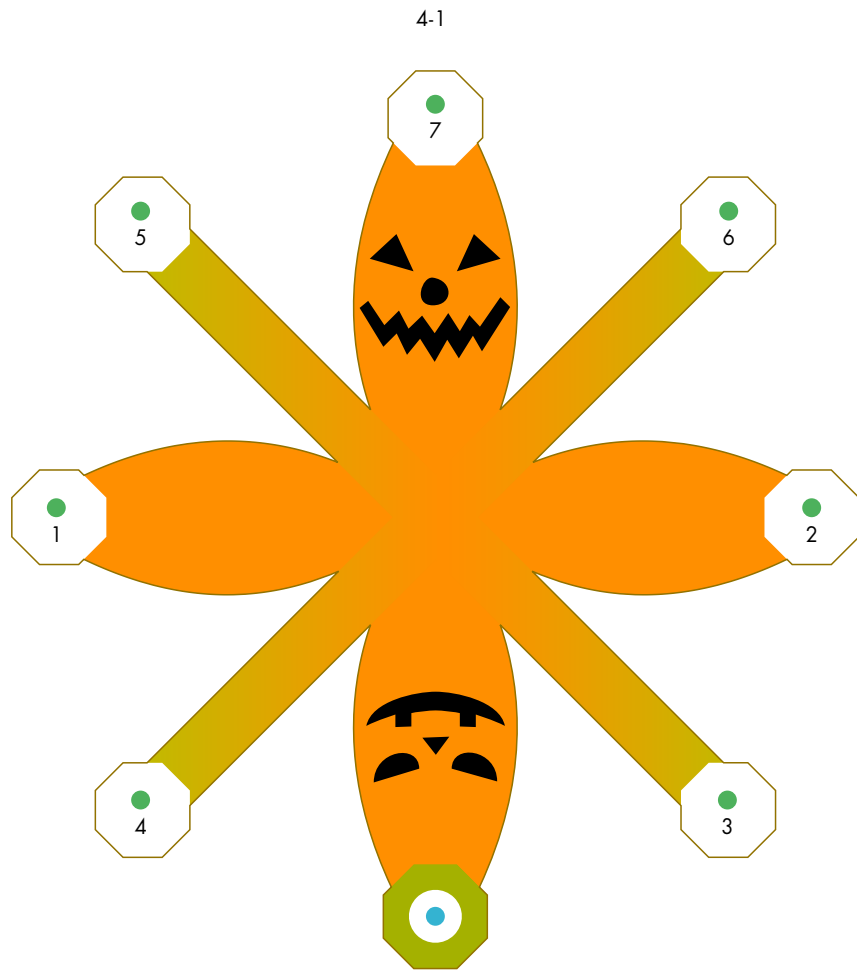


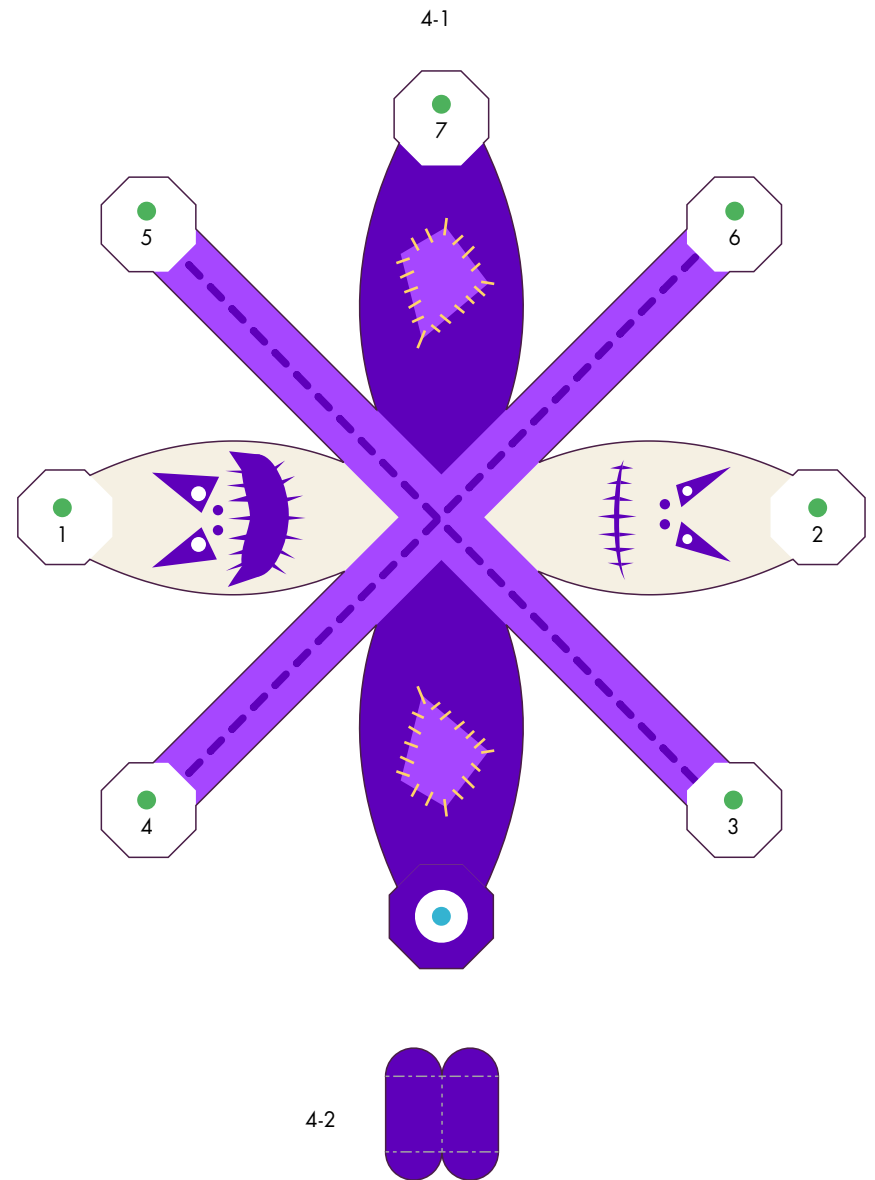
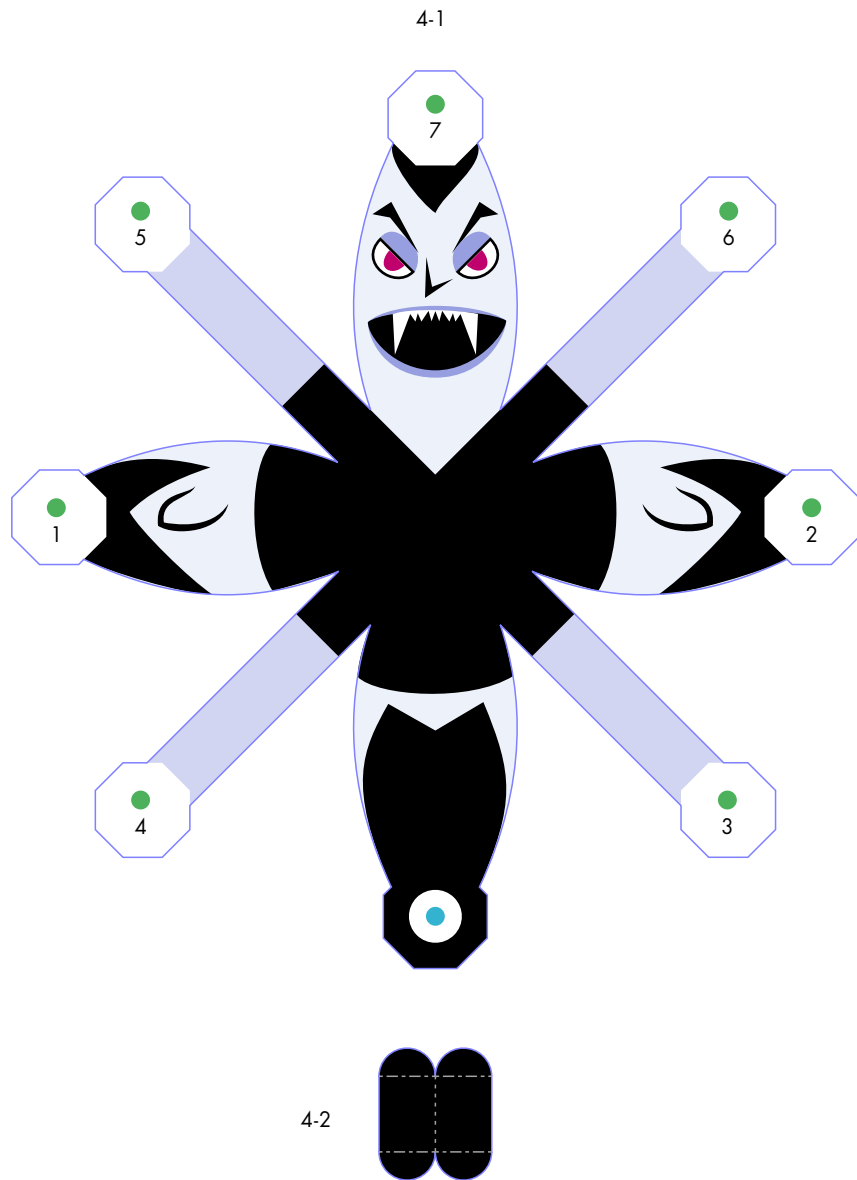
# Halloween tree : Pattern

© Canon Inc. © TakaTaka









# Halloween tree : Pattern

© Canon Inc. © TakaTaka

