

Halloween night: Assembly Instructions

PAPER CRAFT

<http://www.canon.com/c-park/en/>



View of completed model

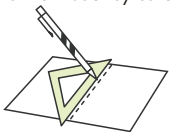
Halloween night

Halloween is a tradition that takes place October 31, the night before the Christian feast of All Saints' Day. According to tradition, the gates to the spirit world open on this night, allowing the spirits of the dead, witches, and nymphs to roam the world. In response, to ward off these visitors from the spirit world, people used to don a mask and make a fire. Today, Halloween is a fun holiday featuring costumed party-goers, decorative jack-o'-lanterns, and costumed children who go from door to door in their neighborhoods in search of candy.

■ Parts list (pattern): Seven US letter sheets (No.5 to No.11)

■ No. of Parts: 41

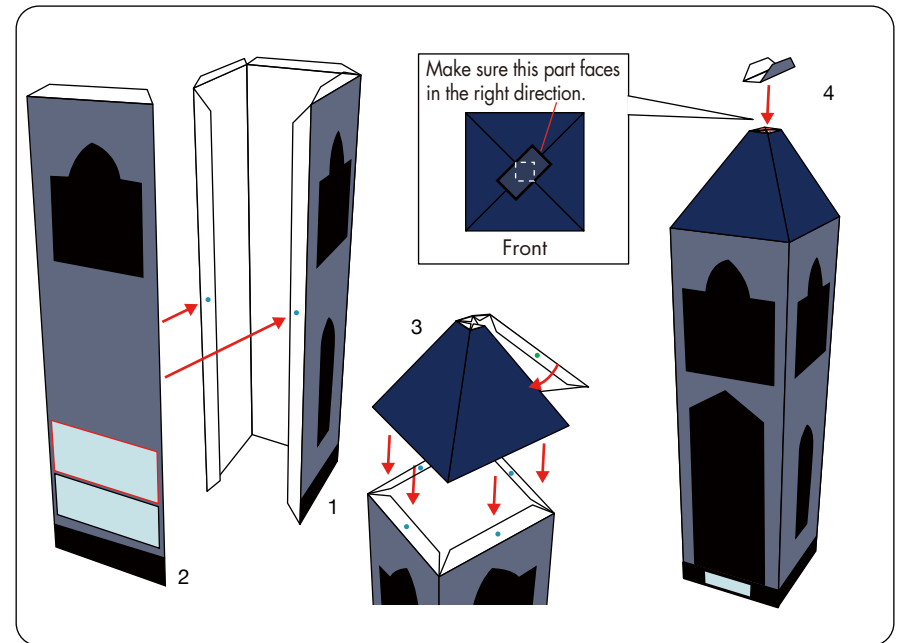
*Build the model by carefully reading the Assembly Instructions, in the parts sheet page order.



*Hint: Trace along the folds with a ruler and an exhausted pen (no ink) to get a sharper, easier fold.

Before starting assembly: Writing the number of each section on its back side before cutting out the sections is highly recommended.
(* This way, you can be sure which section is which even after cutting out the sections.)

- Indicates where sections should be glued together.
- Indicates where to insert sections. Do not glue the sections together.



Assembly Instructions



Mountain fold(dotted line)

Make a mountain fold.

Valley fold(dashed and dotted line)

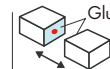
Make a valley fold.

Scissors line(solid line)

Cut along the line.

Cut in line(solid line)

Cut along the line.



Glue
The glue spot(colored dot) shows where to apply the glue.

Glue spot(Red dot)

Glue parts with the same number together.

Glue spot(Green dot)

Glue within the same part.

Glue spot(Blue dot)

Glue to the rear of the other part.

Tools and materials



Scissors, set square, glue(We recommend stick glue), pencil, used ballpoint pen, toothpicks, tweezers, (useful for handling small parts)

Assembly tip



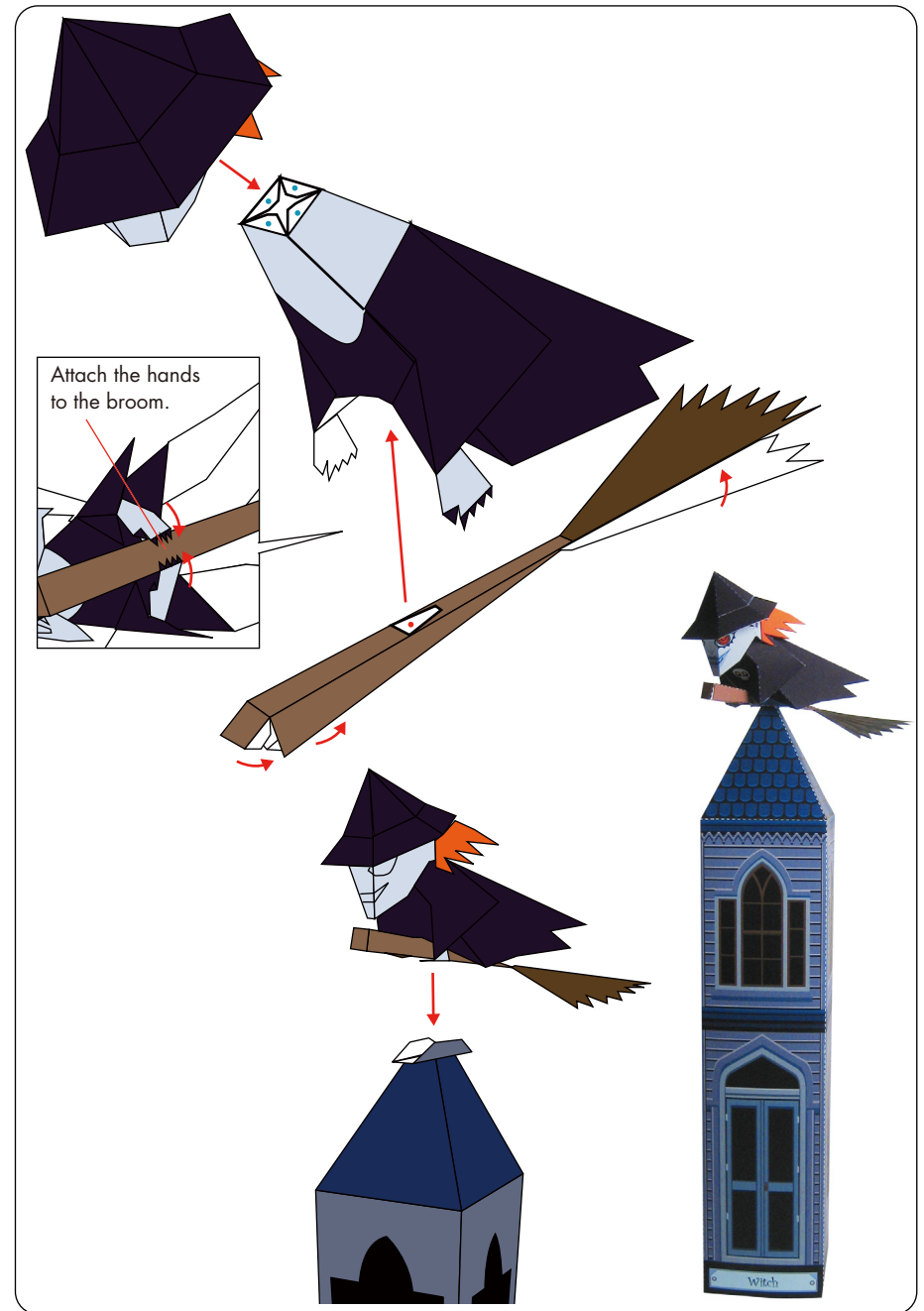
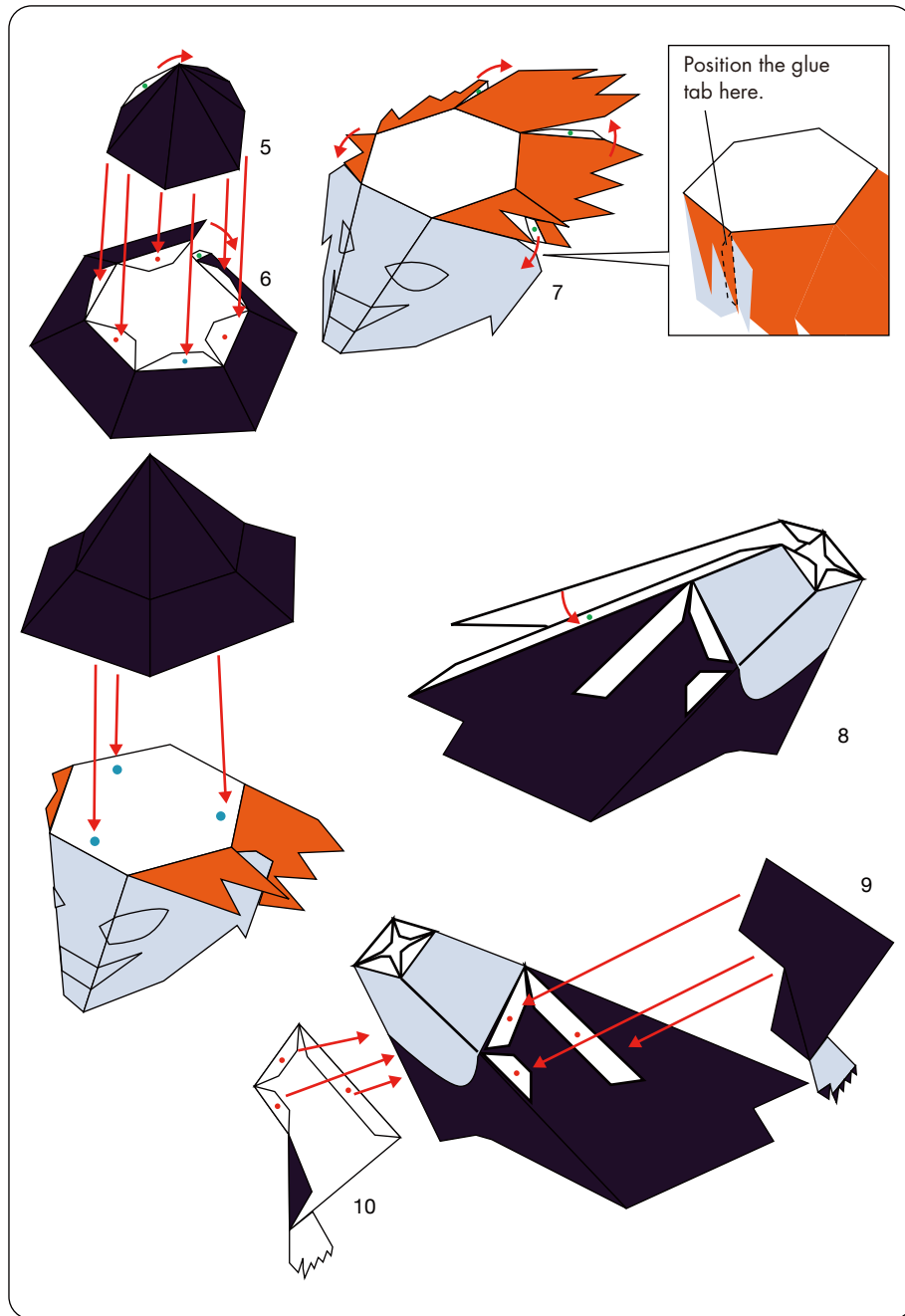
Before gluing, crease the paper along mountain fold and valley fold lines and make sure rounded sections are nice and stiff.

Caution



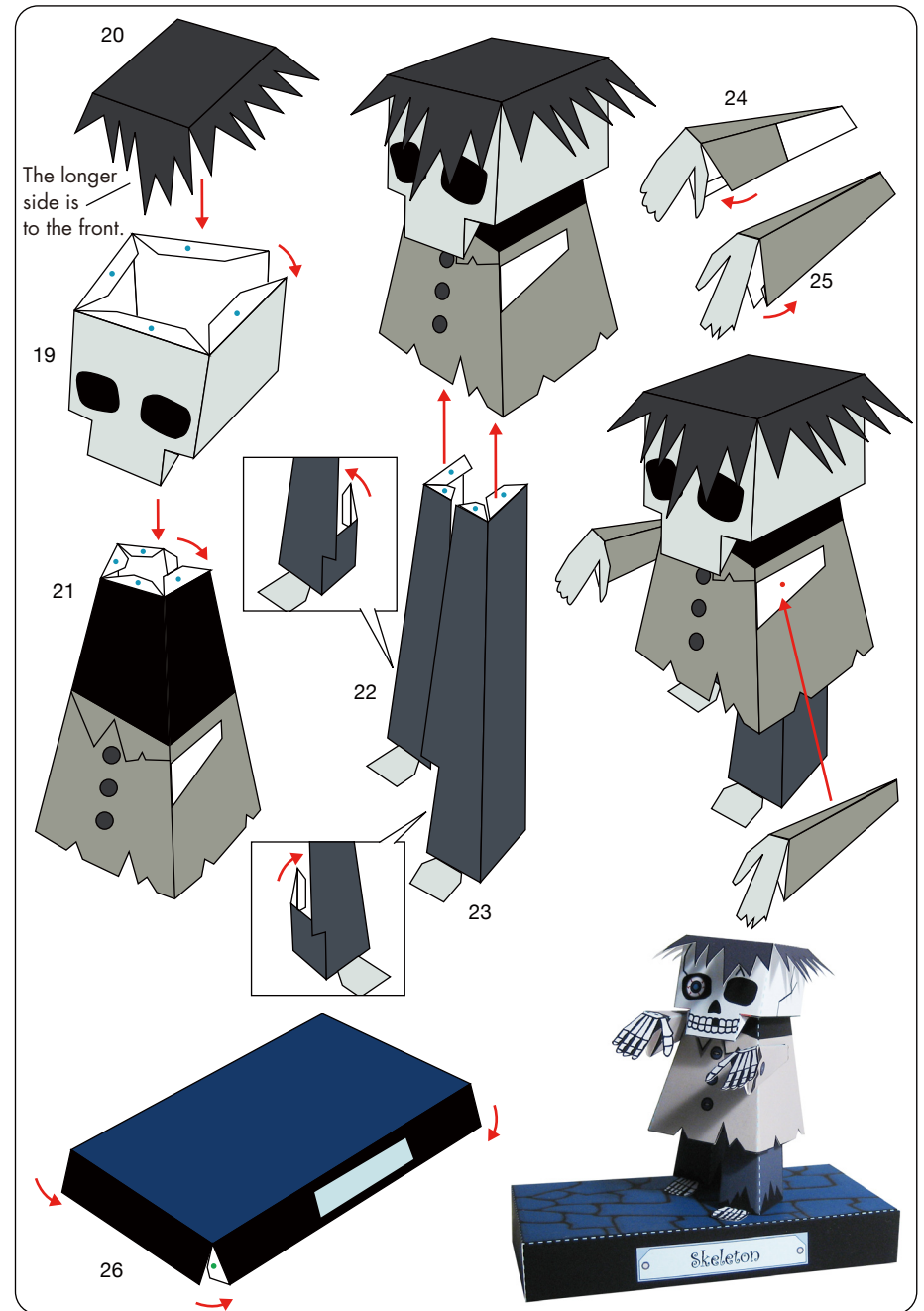
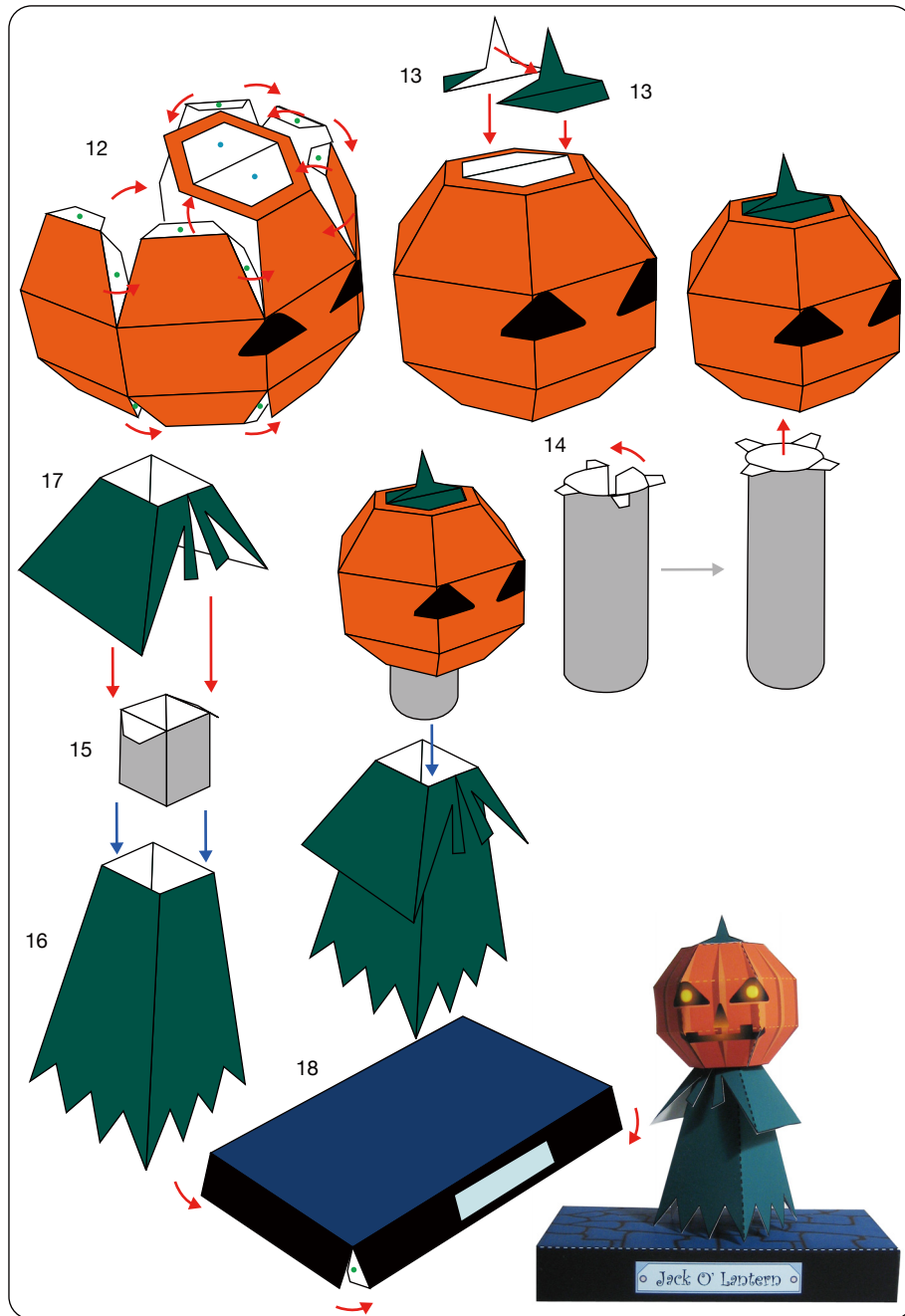
Glue, scissors and other tools may be dangerous to young children so be sure to keep them out of the reach of young children.

Halloween night: Assembly Instructions



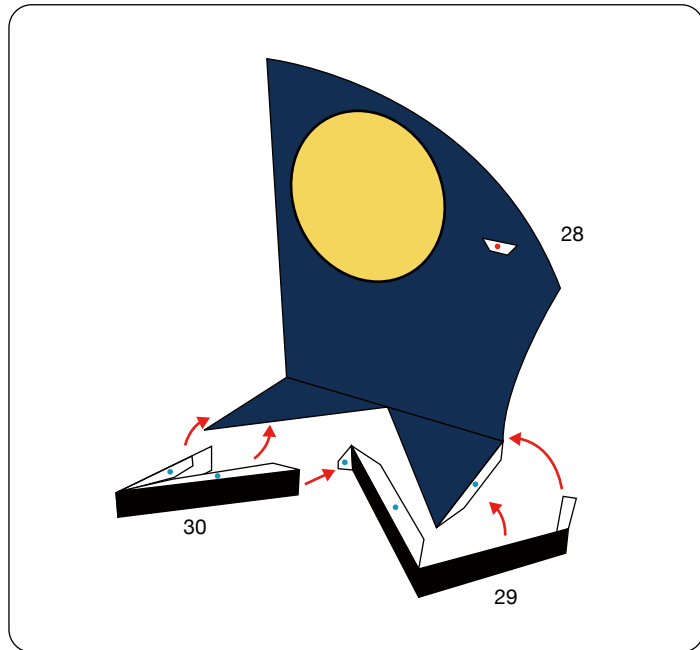
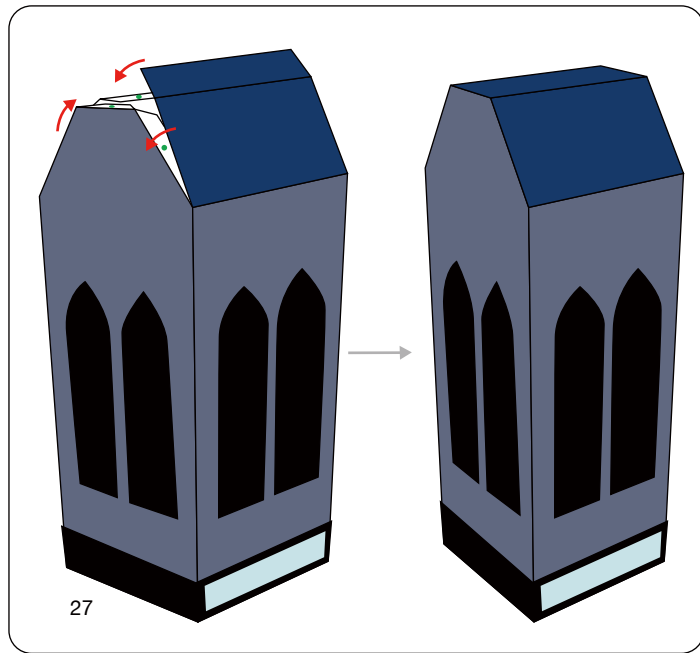
Halloween night: Assembly Instructions

Canon® is a registered trademark of Canon Inc. © Canon Inc. © T.Ichiyama



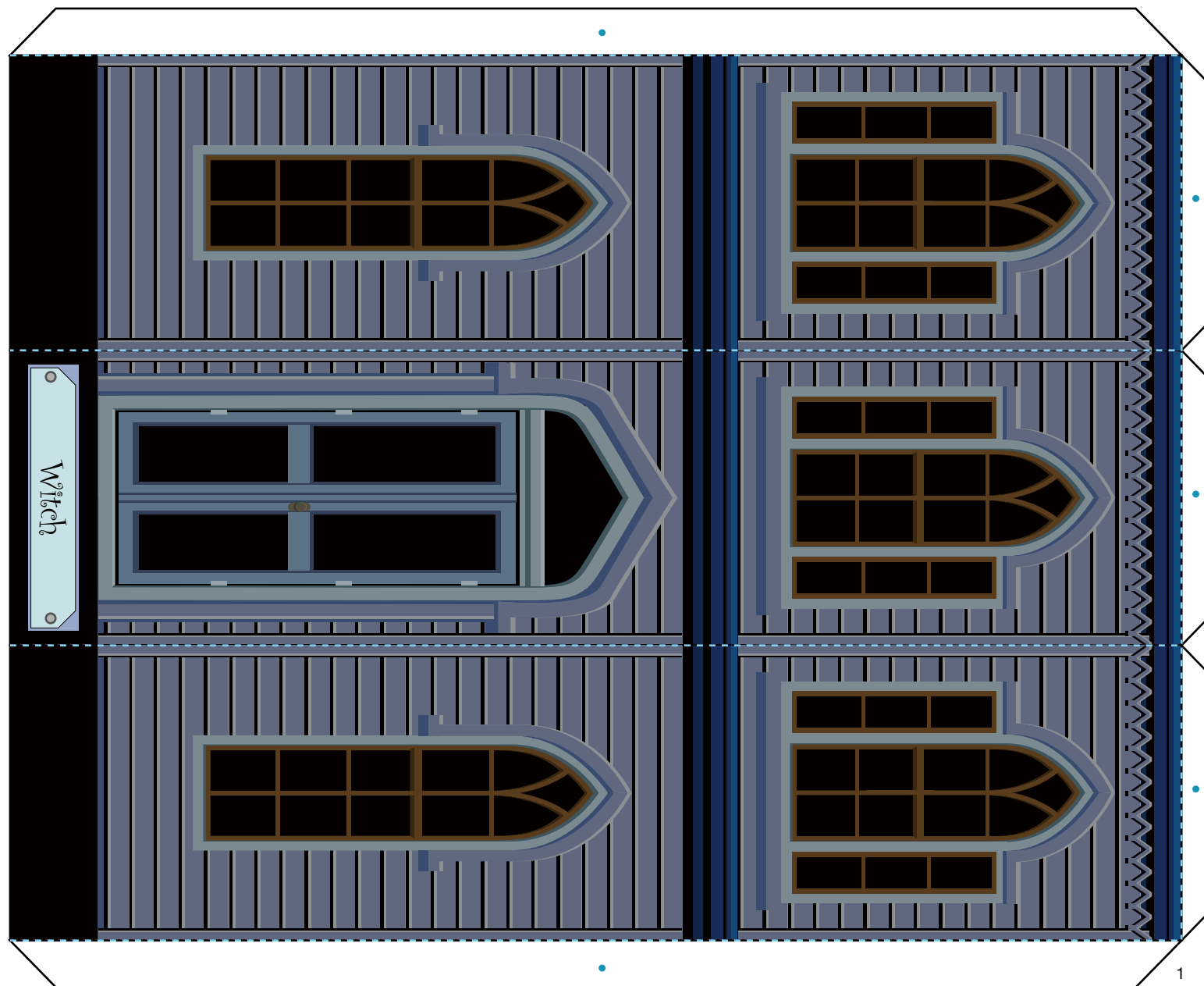
Halloween night: Assembly Instructions

Canon® is a registered trademark of Canon Inc. © Canon Inc. © T.Ichiyama



Halloween night: Pattern

Canon® is a registered trademark of Canon Inc. © Canon Inc. © T.Ichiyama

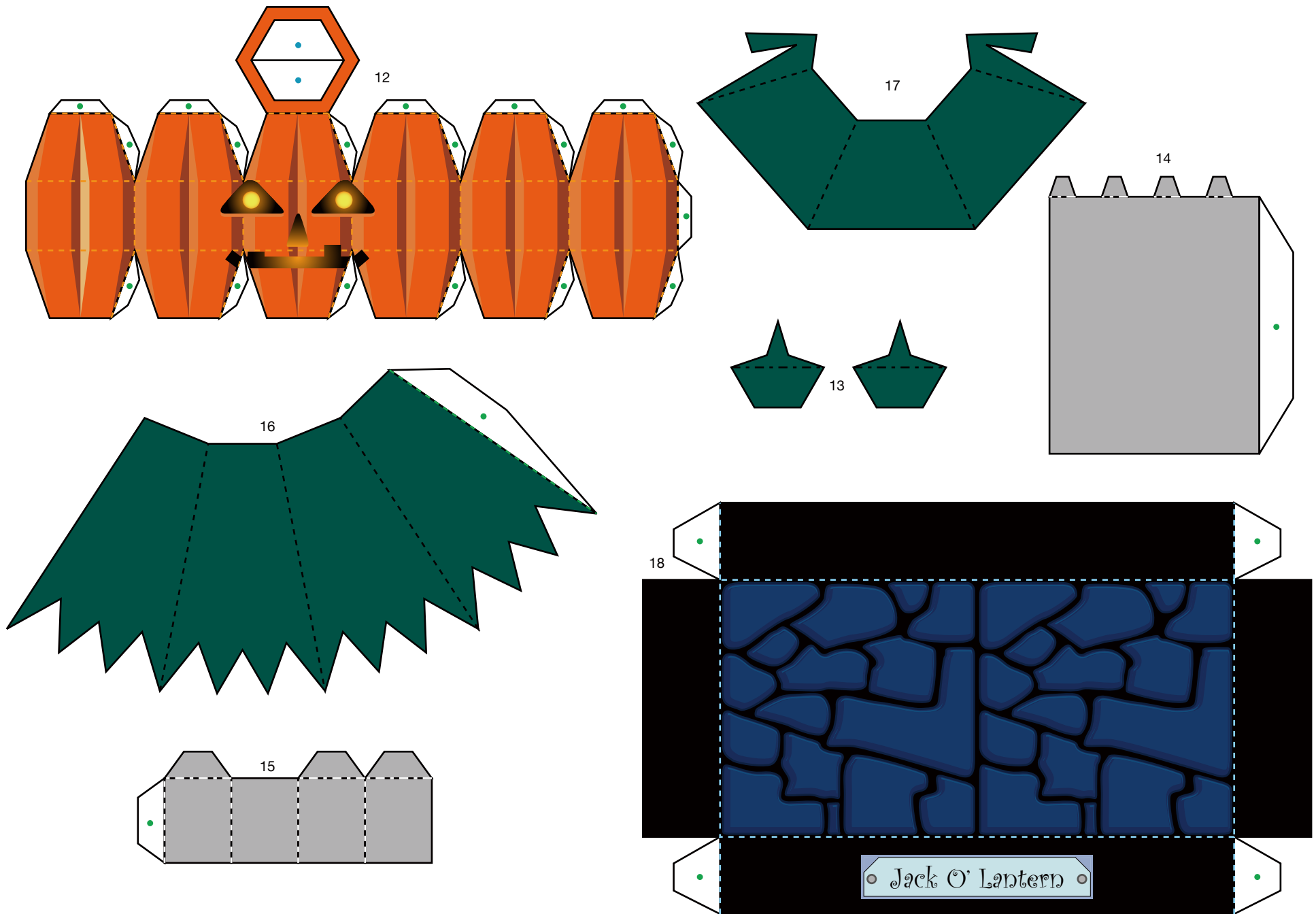


Halloween night: Pattern

Canon ® is a registered trademark of Canon Inc. © Canon Inc. © T.Ichiyama

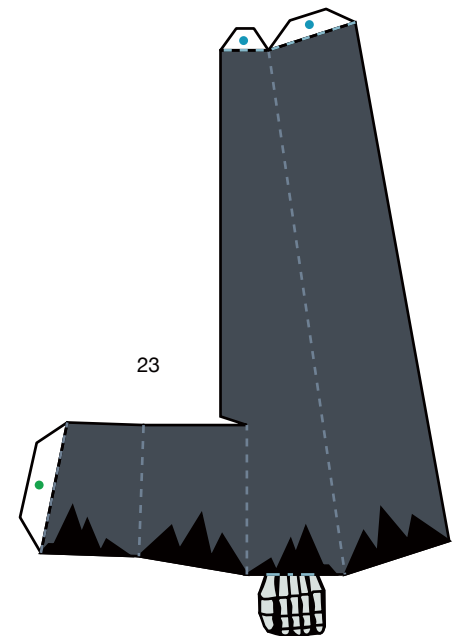
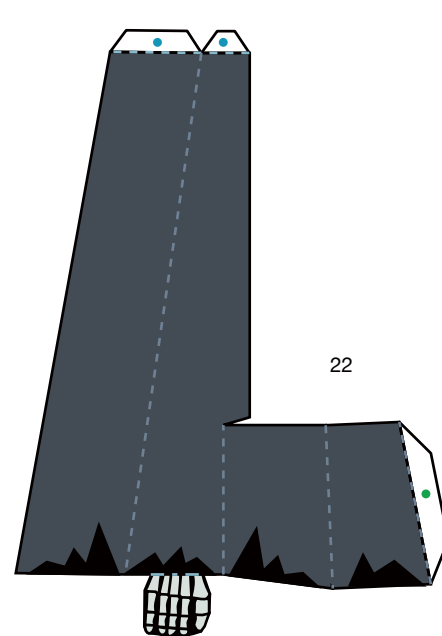
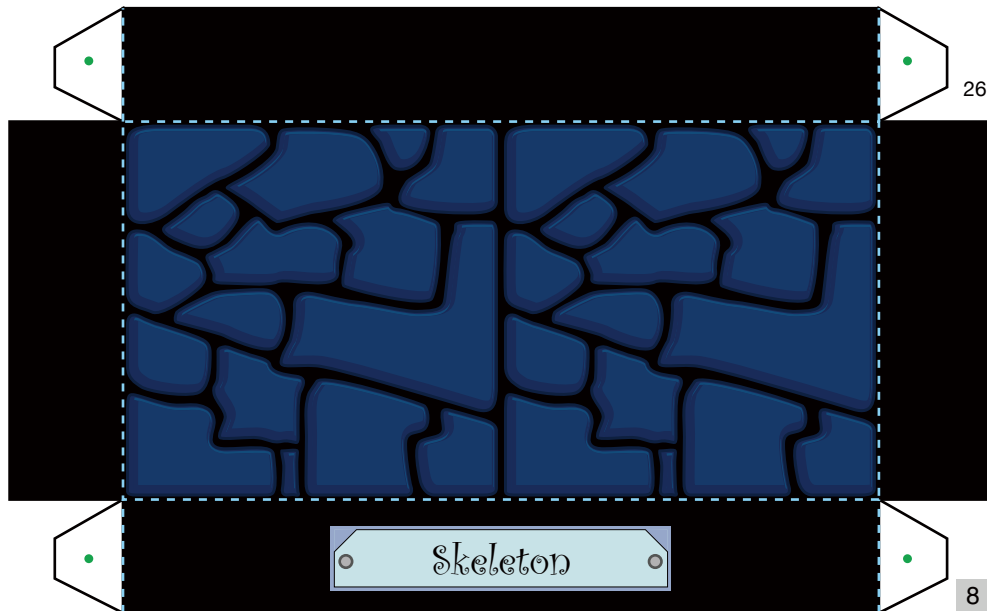
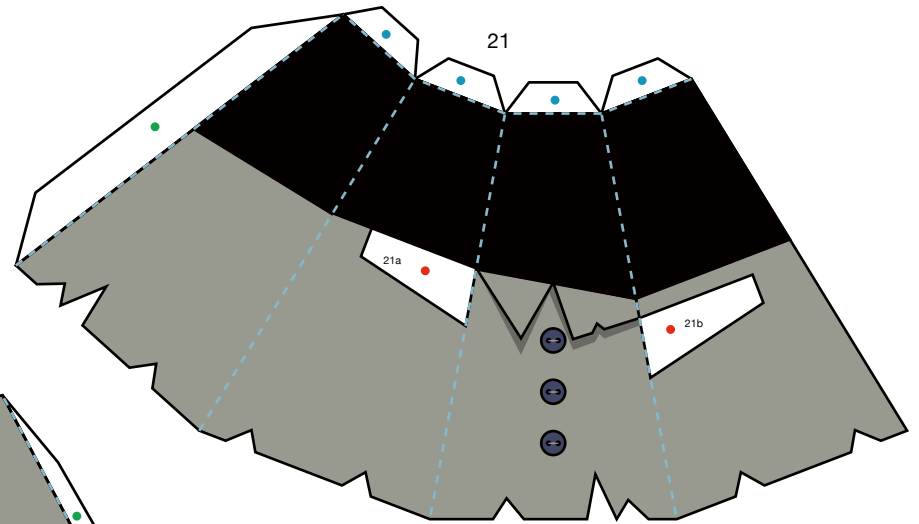
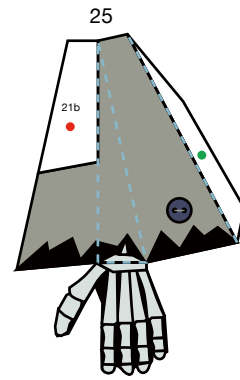
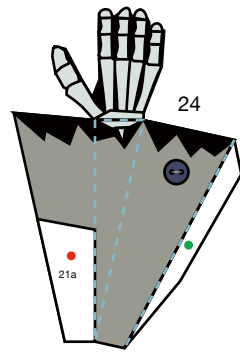
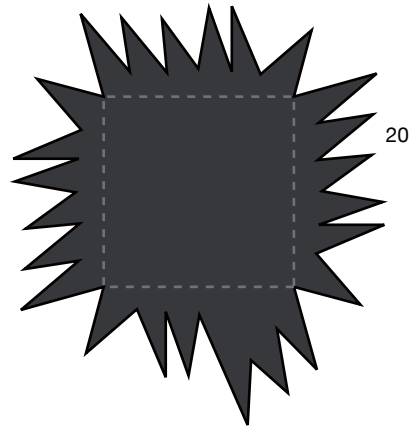
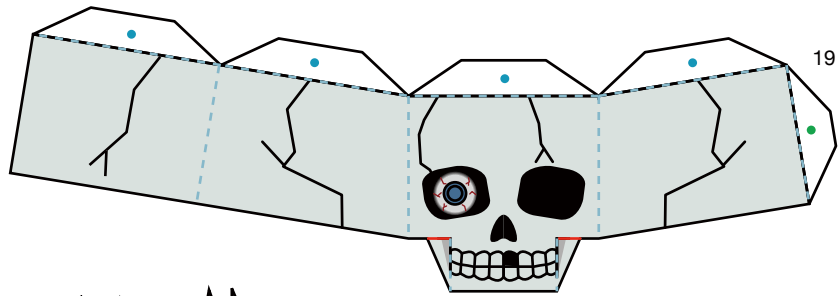


Halloween night: Pattern



Halloween night: Pattern

Canon ® is a registered trademark of Canon Inc. © Canon Inc. © T.Ichiyama



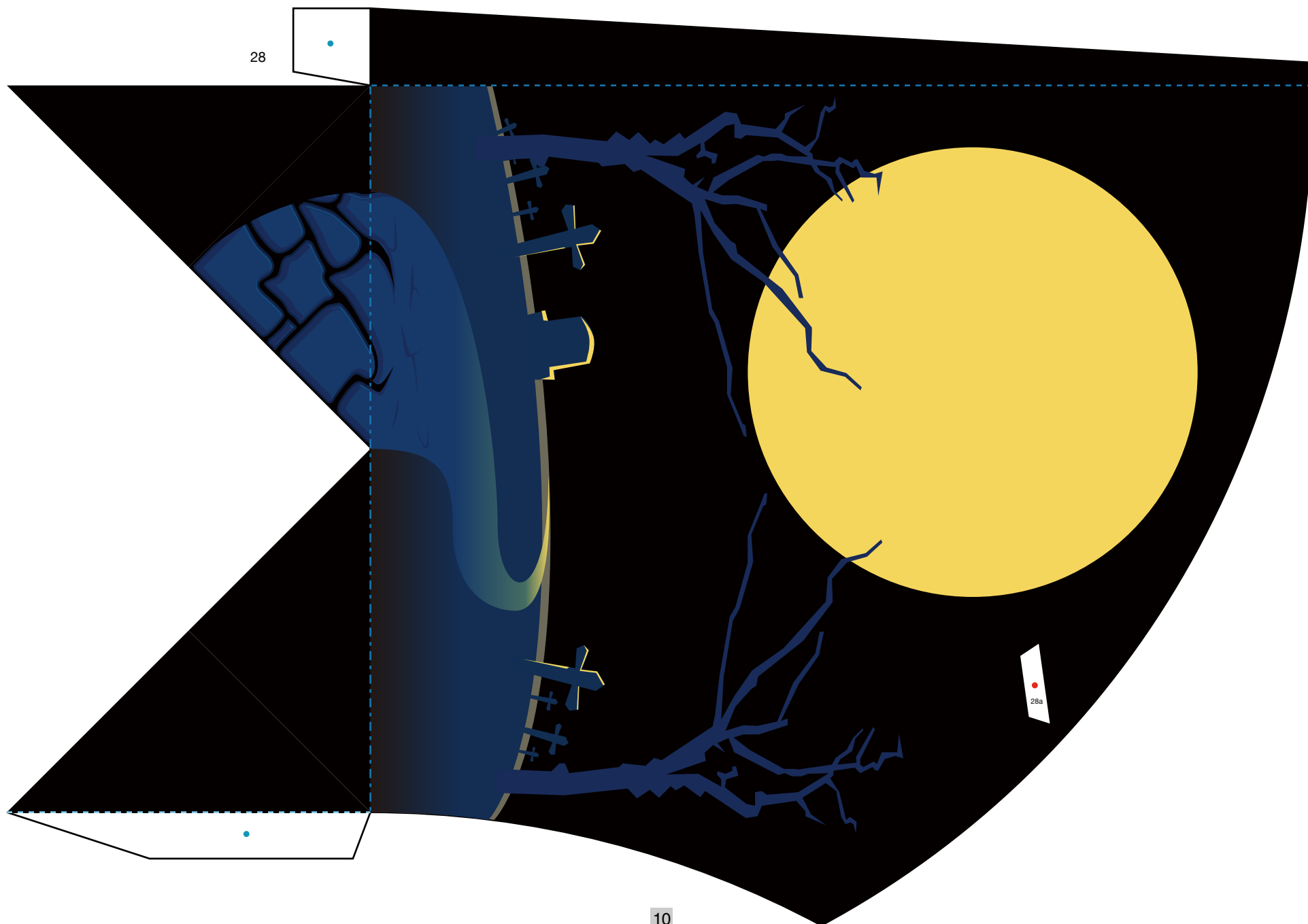
Halloween night: Pattern

Canon® is a registered trademark of Canon Inc. © Canon Inc. © T.Ichiyama



Halloween night: Pattern

Canon ® is a registered trademark of Canon Inc. © Canon Inc. © T.Ichiyama



Halloween night: Pattern

Canon ® is a registered trademark of Canon Inc. © Canon Inc. © T.Ichiyama

