

## PAPER CRAFT

<http://www.canon.com/c-park/en/>



HAPPY HALLOWEEN 



### Halloween Bucket

This cute Halloween bucket is just the thing for putting your treats in! There are orange, green and black buckets imaging Jack O' Lantern to choose from. There are loads of extra parts, such as a witch hat, a pirate hat and bat wings. You can also make it appear that the light inside the bucket is turning on and off! Make your own original Halloween bucket and fill it with treats as a present for someone, or go out trick or treating for yourself!

A little wrapping paper, a nice card, etc., a little extra effort goes a long way.



### You will need

Scissors, glue, a used ball-point pen



### Assembly Tip

Trace along the folds with a used pen (no ink) to get a sharper, easier fold.






### Caution

Glue, scissors and other tools may be dangerous to young children, so be sure to keep them out of the reach of young children.



### Notation Key

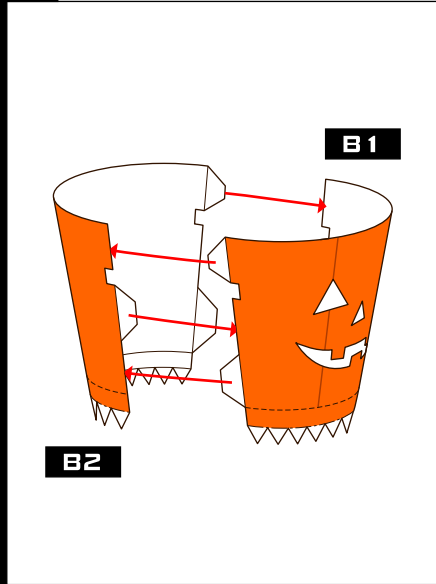
- Mountain fold
- - - - - Valley fold
- Scissors line
- Cut in line
-  Cut out
-  Glue
-  Glue reverse side

- B1 ~ B14**  
▶ BUCKET parts
- C1 ~ C2**  
▶ CAP parts
- W1 ~ W6**  
▶ WITCH HAT parts
- P1 ~ P4**  
▶ PIRATE HAT parts
- BW1 ~ BW2**  
▶ BAT WING parts

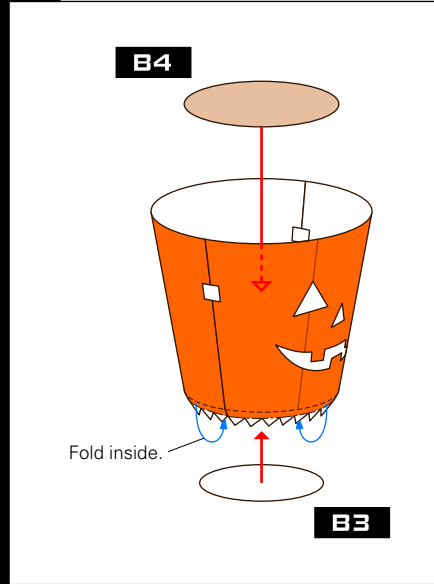


## Assemble the BUCKET

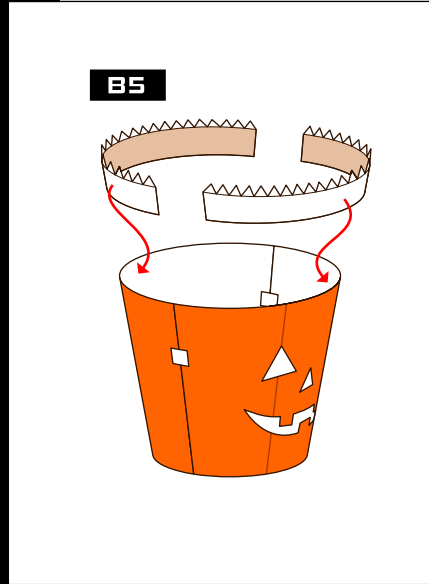
### 1 Assemble the side.



### 2 Assemble the base.

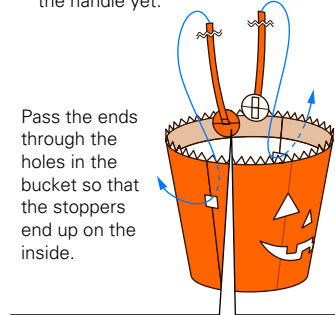


### 3 Glue the upper parts.



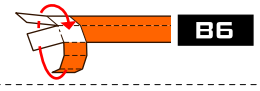
### 4 Make the handle.

\*Do not connect the left and right ends of the handle yet.

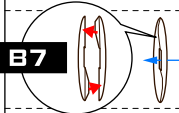


Pass the ends through the holes in the bucket so that the stoppers end up on the inside.

1. Wrap around and glue.



B7

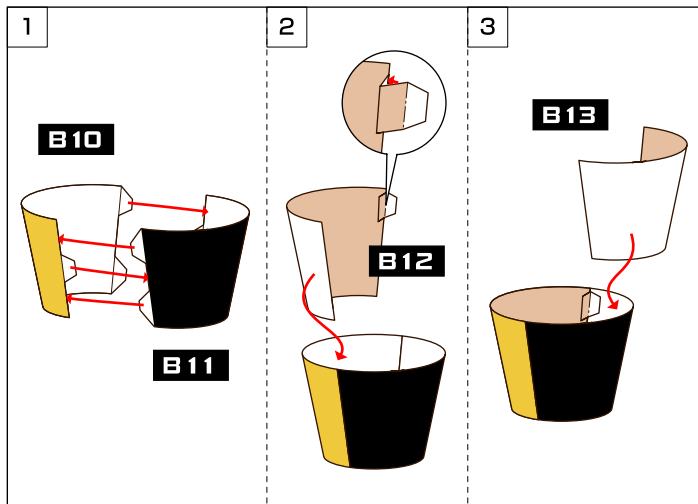


2. Pass the end through the hole.

3. Open out the ends and glue them down.



### 5 Assemble the rotating part.



Use the tag to turn the rotating part and change the colors of the eyes and mouth.

### 6 Glue the upper part.



### 7 Complete!



# Canon Halloween Bucket: Assembly Instructions

Canon® is a registered trademark of Canon Inc. © Canon Inc. © e r i c o

### Assemble the CAP

**C1**

**C2**

**COMPLETE!**

### Assemble the WINGS

Make two pairs.

**BW1**

**BW2**

Glue them on the side.

**COMPLETE!**

### Assemble the WITCH HAT

**W1**

**W2** **W3** **W4**

**W3** **W4** **W2**

**W6**

**W5**

Glue the decoration you like.

**COMPLETE!**

### Assemble the PIRATE HAT

**P1** **P4**

Make two pairs.

**P3**

**P2**

Cut the eye patch string to the length you want and glue it onto the bucket.

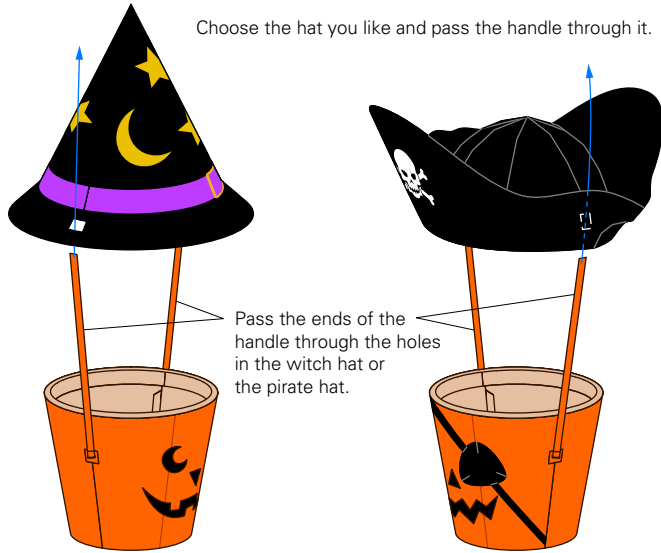
**COMPLETE!**



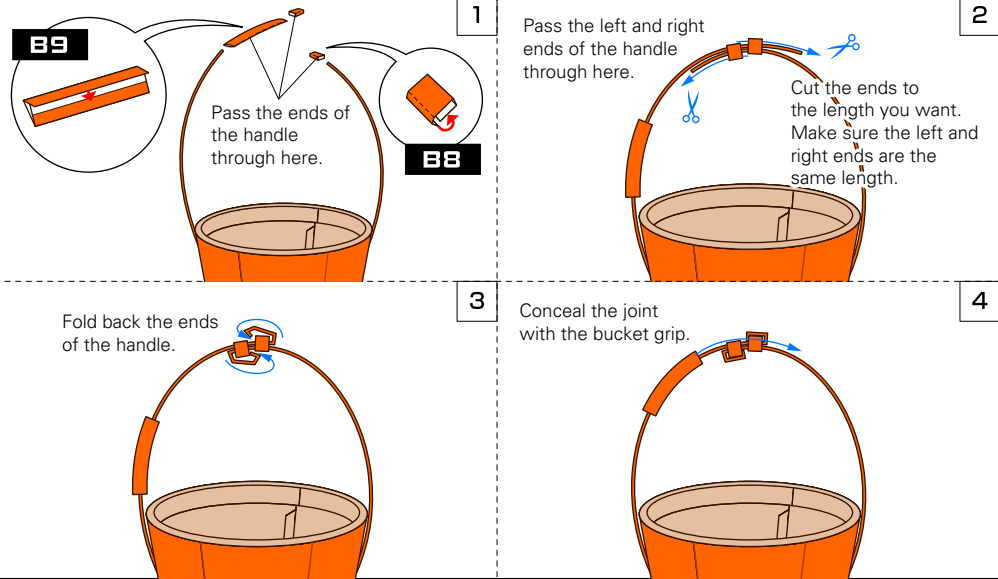
## Finishing Touches



### 1 Pass the handle through the hat.



### 2 Assemble the bucket grip. \*In this illustration, the hat is not shown.



### 3 Complete!!



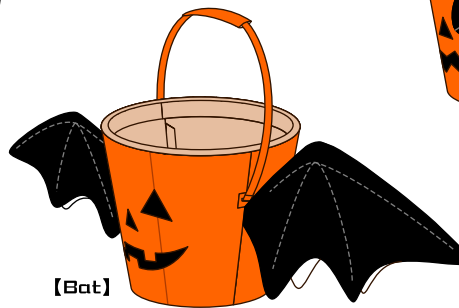
[Orange]



[Black]



[Green]



[Bat]



[Pirate]



[Witch]