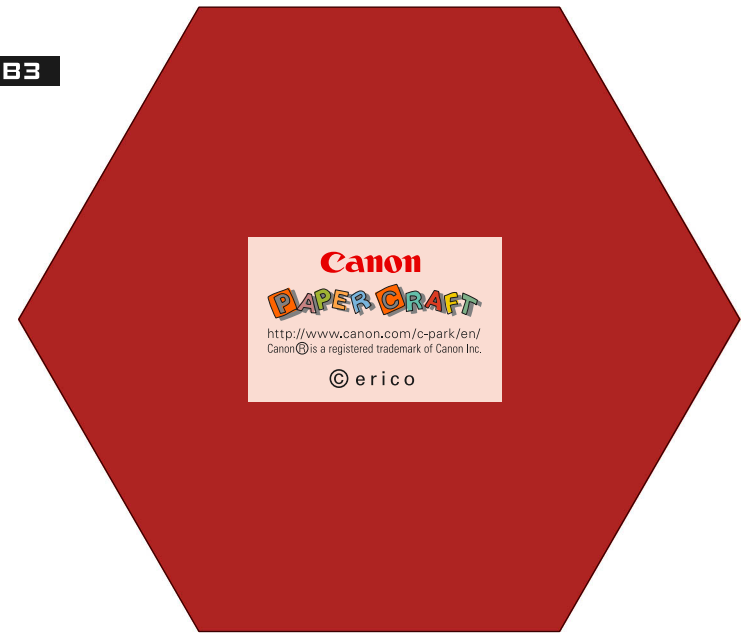
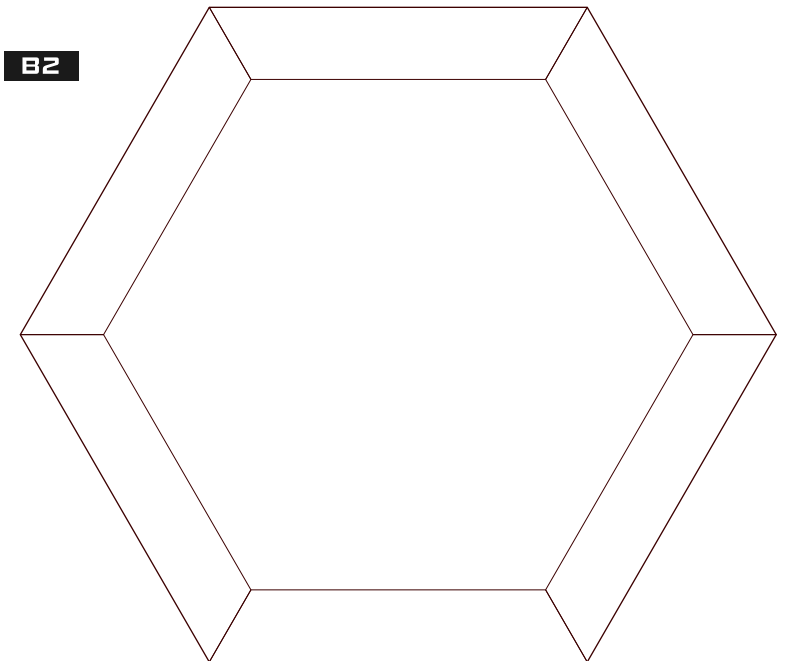




B3



B2



 **You will need**

Scissors, glue, a used ball-point pen

 **Assembly Tip**

Trace along the folds with a ruler and a used pen (no ink) to get a sharper, easier fold.

 **Caution**

Glue, scissors and other tools may be dangerous to young children, so be sure to keep them out of the reach of young children.

 **Notation Key**

----- Mountain fold

- - - - - Valley fold

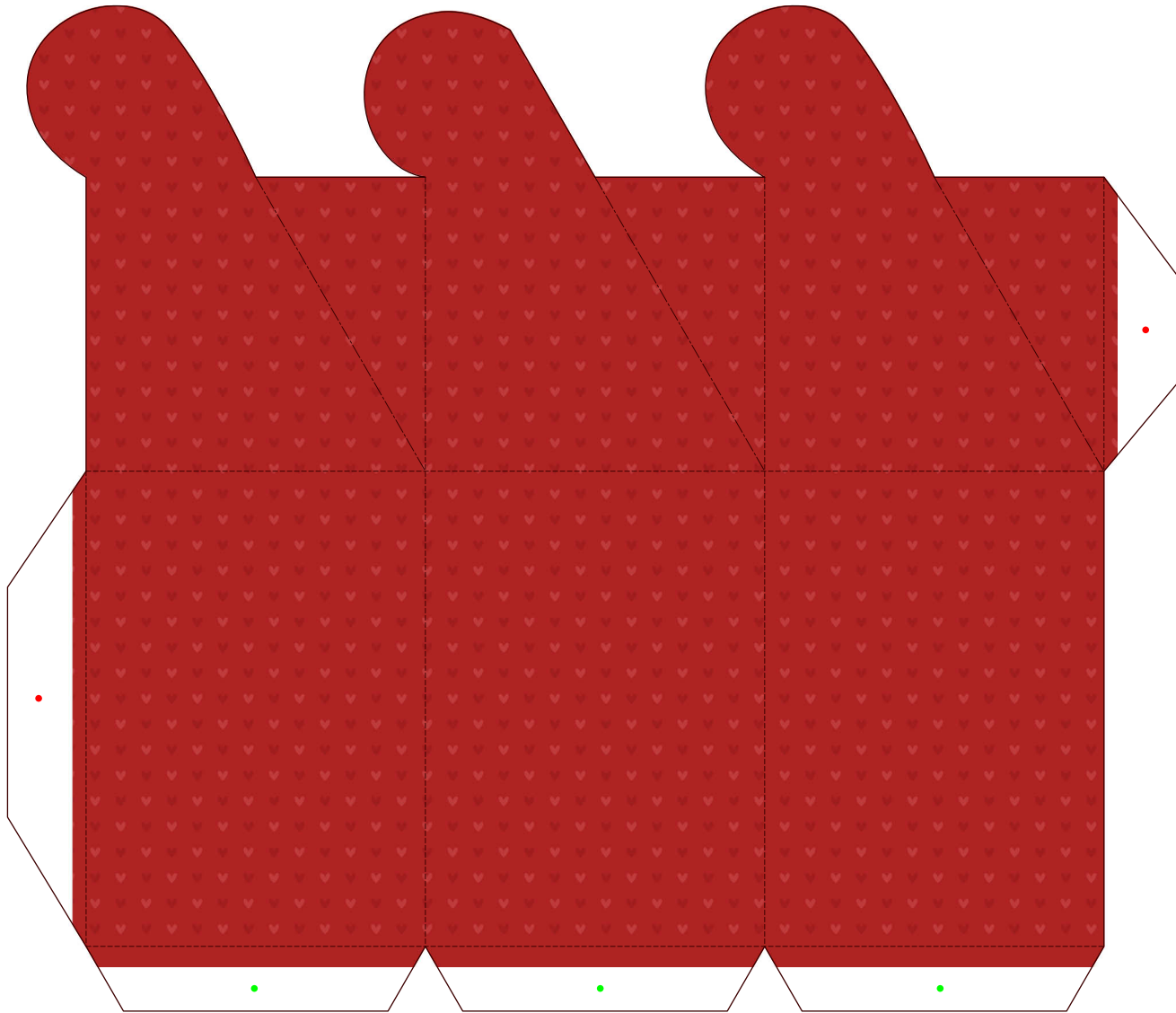
———— Scissors line

———— Cut in line

● Glue

● Glue reverse side

B1



B1

