

# Canon Gift box E (Pink) : Assembly Instructions

Canon ® is a registered trademark of Canon Inc. © Canon Inc. © Yukiko Tanikoshi

## PAPER CRAFT

<http://www.canon.com/c-park/en/>



### You will need

scissors, paste, a used ballpoint pen (tracing along the fold lines makes them easier to fold)

### Explanation of Symbols

#### ▲ Numbered glue tabs

Glue the parts together in the order indicated by the numbers.



**[Caution]**

Glue, scissors and other tools may be dangerous to young children so be sure to keep them out of the reach of young children.

### Assembly procedure

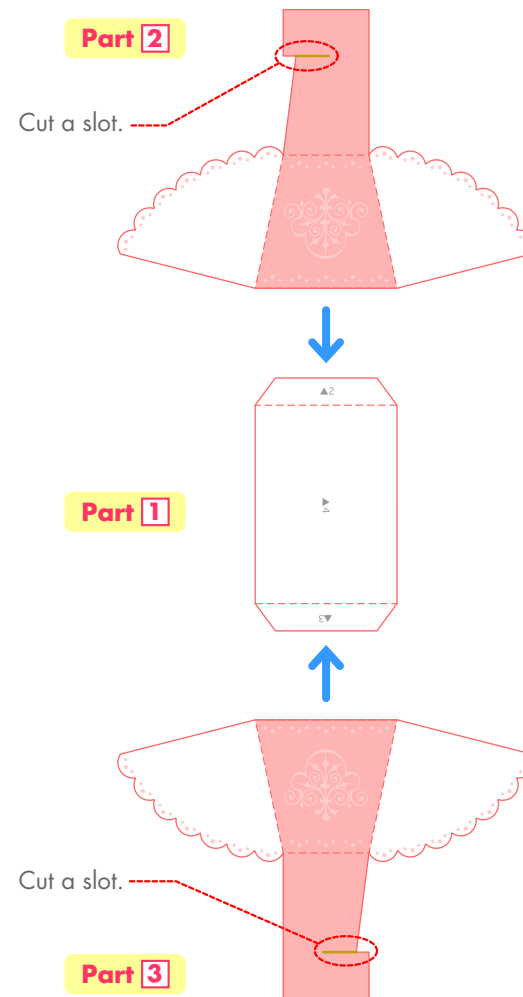
— Cut line    - - - Mountain fold    - · - · Valley fold    — Slot

\*STEP\*

## 1 Assemble the sides of the box

Fold along all the dotted lines on parts [1] to [3].

Glue parts [2] and [3] to part [1].



# Canon Gift box E (Pink) : Assembly Instructions

Canon ® is a registered trademark of Canon Inc. © Canon Inc. © Yukiko Tanikoshi

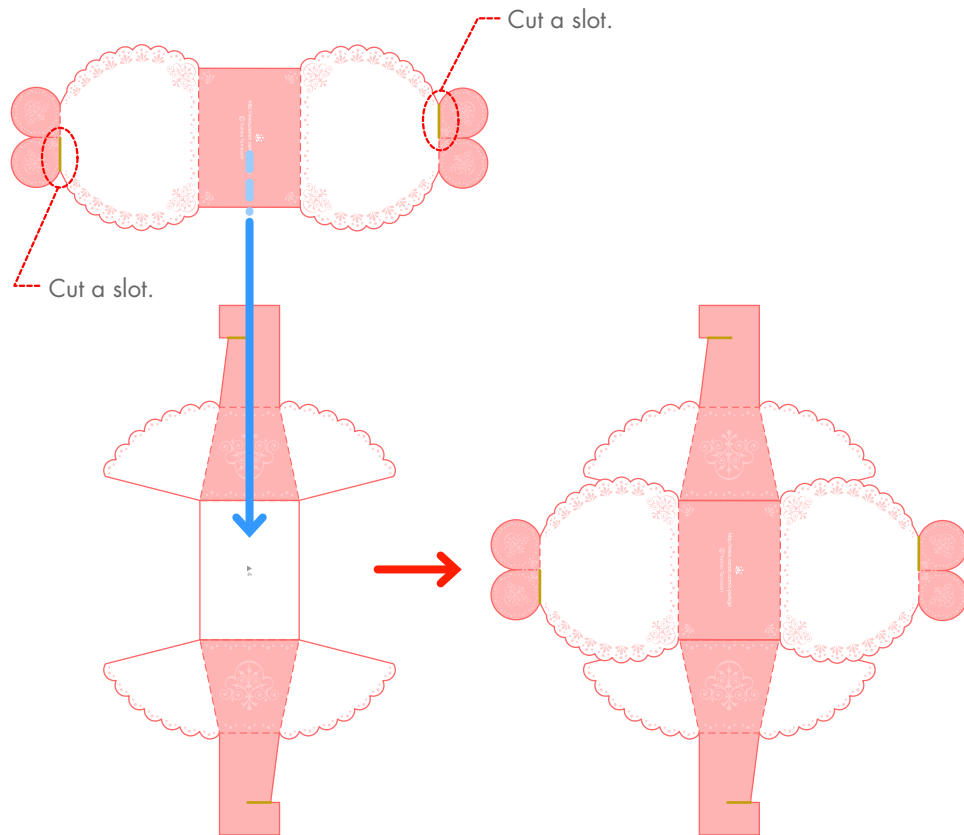
## Assembly procedure

★STEP★

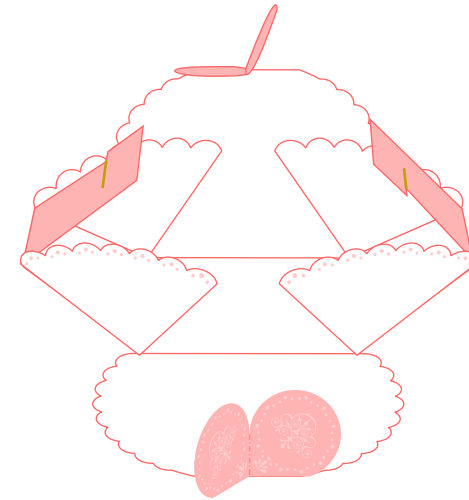
### 2 Assemble the box

Glue together the base of the sides of the box from 1 to part 4.

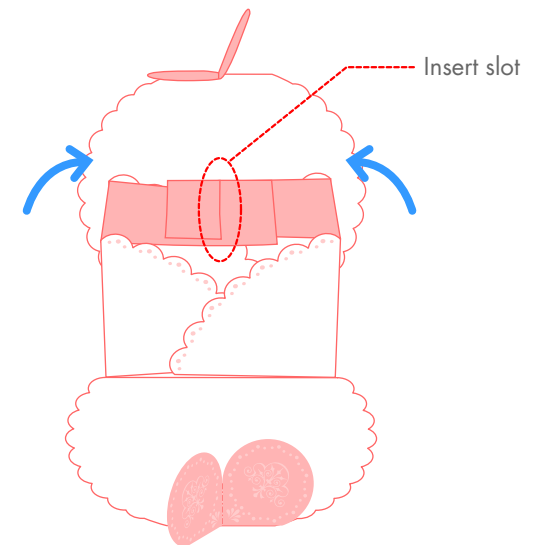
#### Part 4



Fold after gluing the parts together.



Insert both sides of the box into the slots.



# Canon Gift box E (Pink) : Assembly Instructions

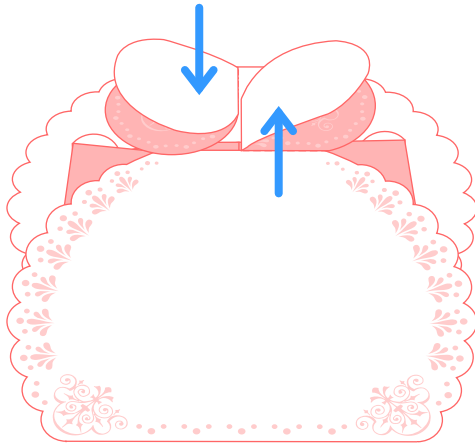
Canon ® is a registered trademark of Canon Inc. © Canon Inc. © Yukiko Tanikoshi

## Assembly procedure

STEP  
3

### Assemble the box

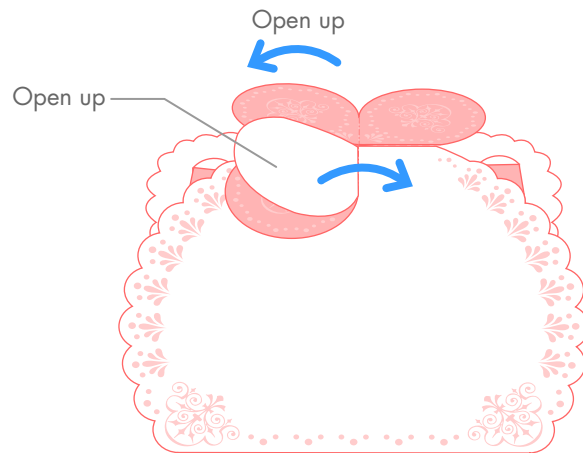
Fold the part with slits on the front and rear surface of the box and insert.



Pull it into shape and the box is completed.



Once it is inserted properly, open up the folded part.



Completed