

Canon Gift box D (Brown) : Parts

Canon ® is a registered trademark of Canon Inc. © Canon Inc. © Yukiko Tanikoshi



You will need

scissors, paste, a used ballpoint pen (tracing along the fold lines makes them easier to fold)

Explanation of Symbols

▲ Numbered glue tabs

Glue the parts together in the order indicated by the numbers.



[Caution]

Glue, scissors and other tools may be dangerous to young children so be sure to keep them out of the reach of young children.

Parts

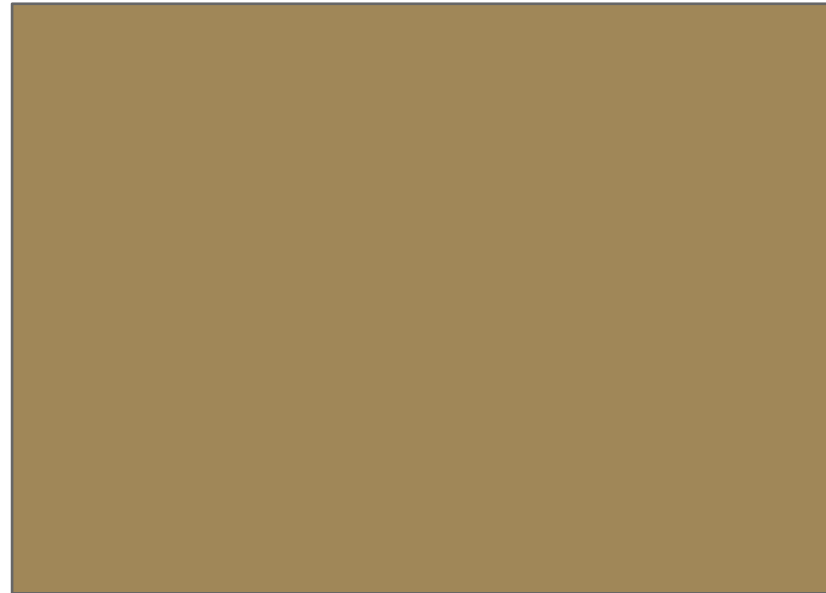
— Cut line

--- Mountain fold

-·-·- Valley fold

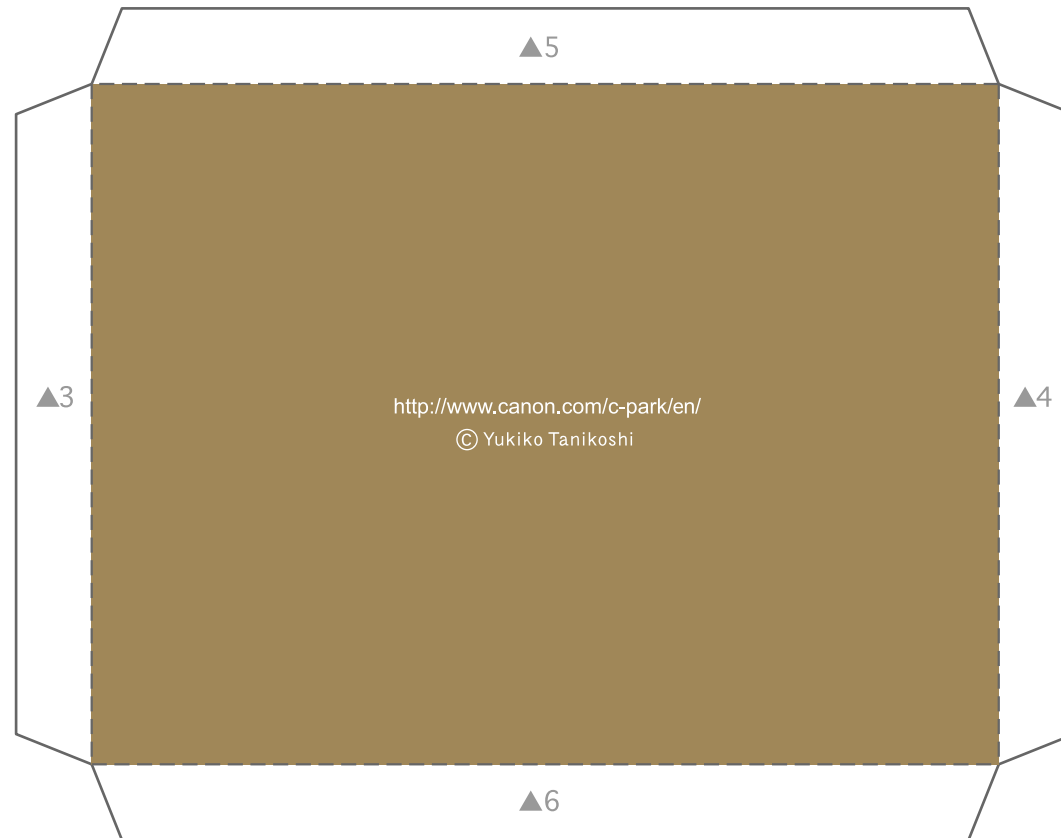
— Slot

1



Parts

2

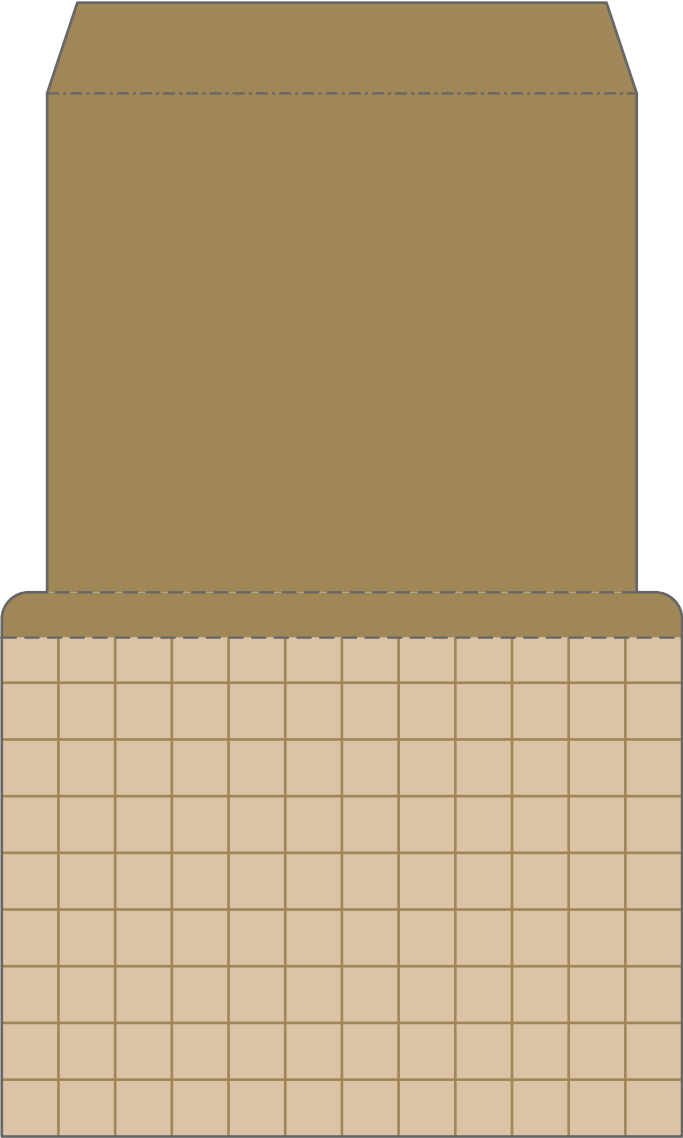


Canon Gift box D (Brown) : Parts

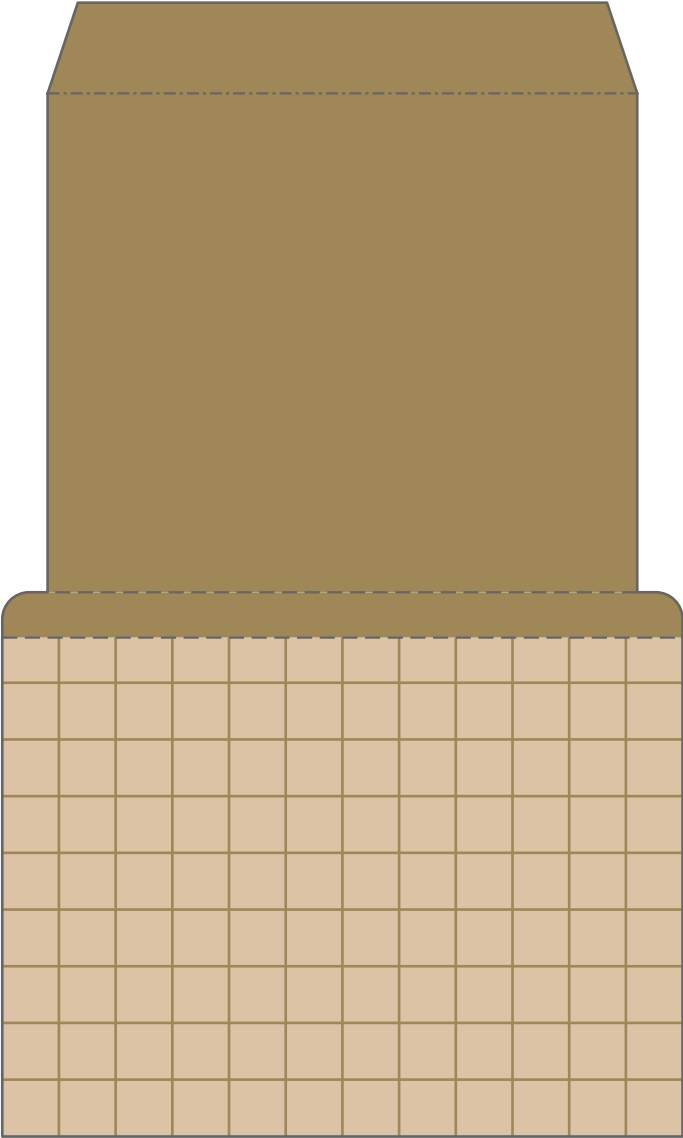
Canon ® is a registered trademark of Canon Inc. © Canon Inc. © Yukiko Tanikoshi

Parts

3



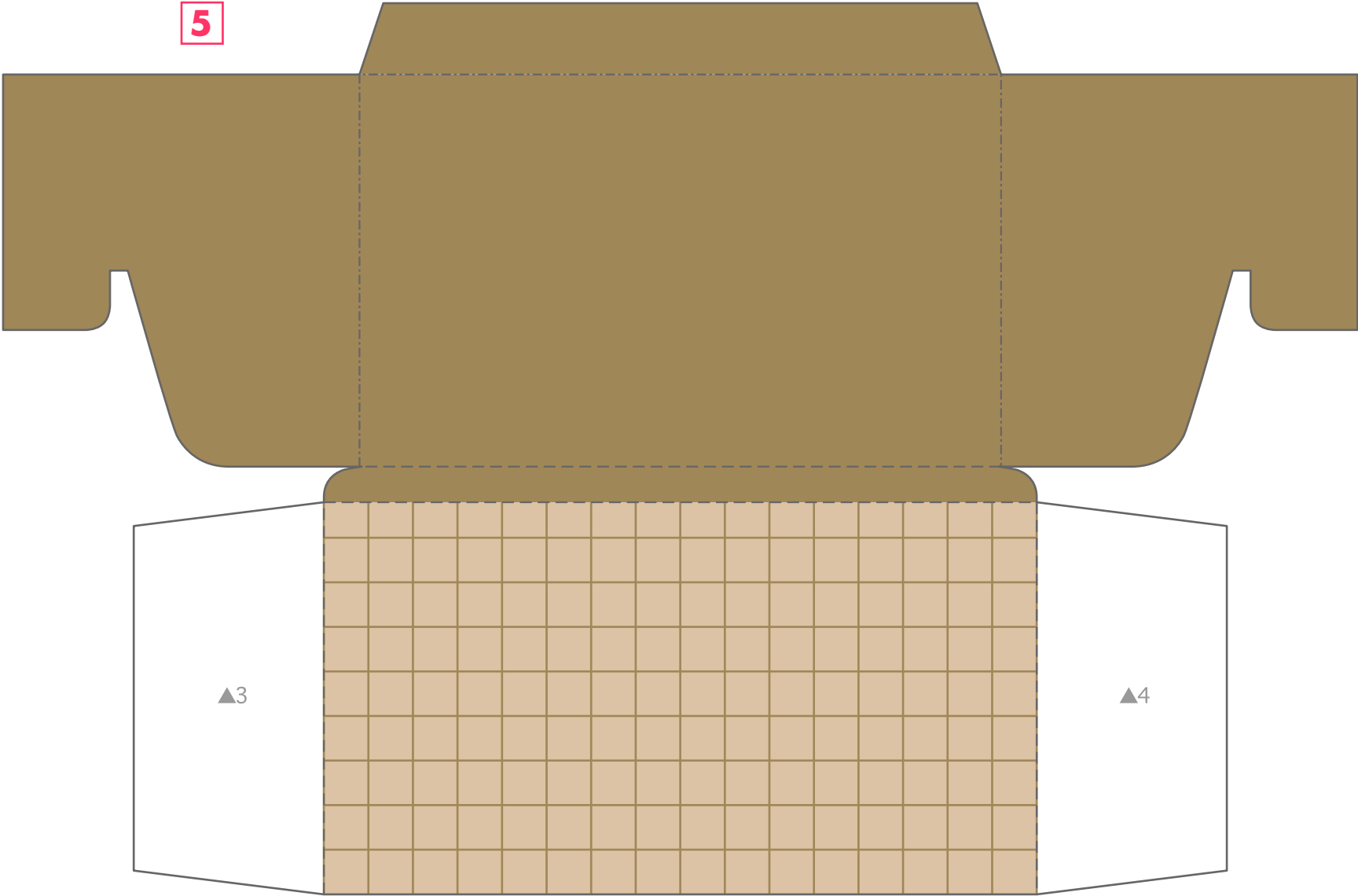
4



Canon Gift box D (Brown) : Parts

Canon ® is a registered trademark of Canon Inc. © Canon Inc. © Yukiko Tanikoshi

Parts

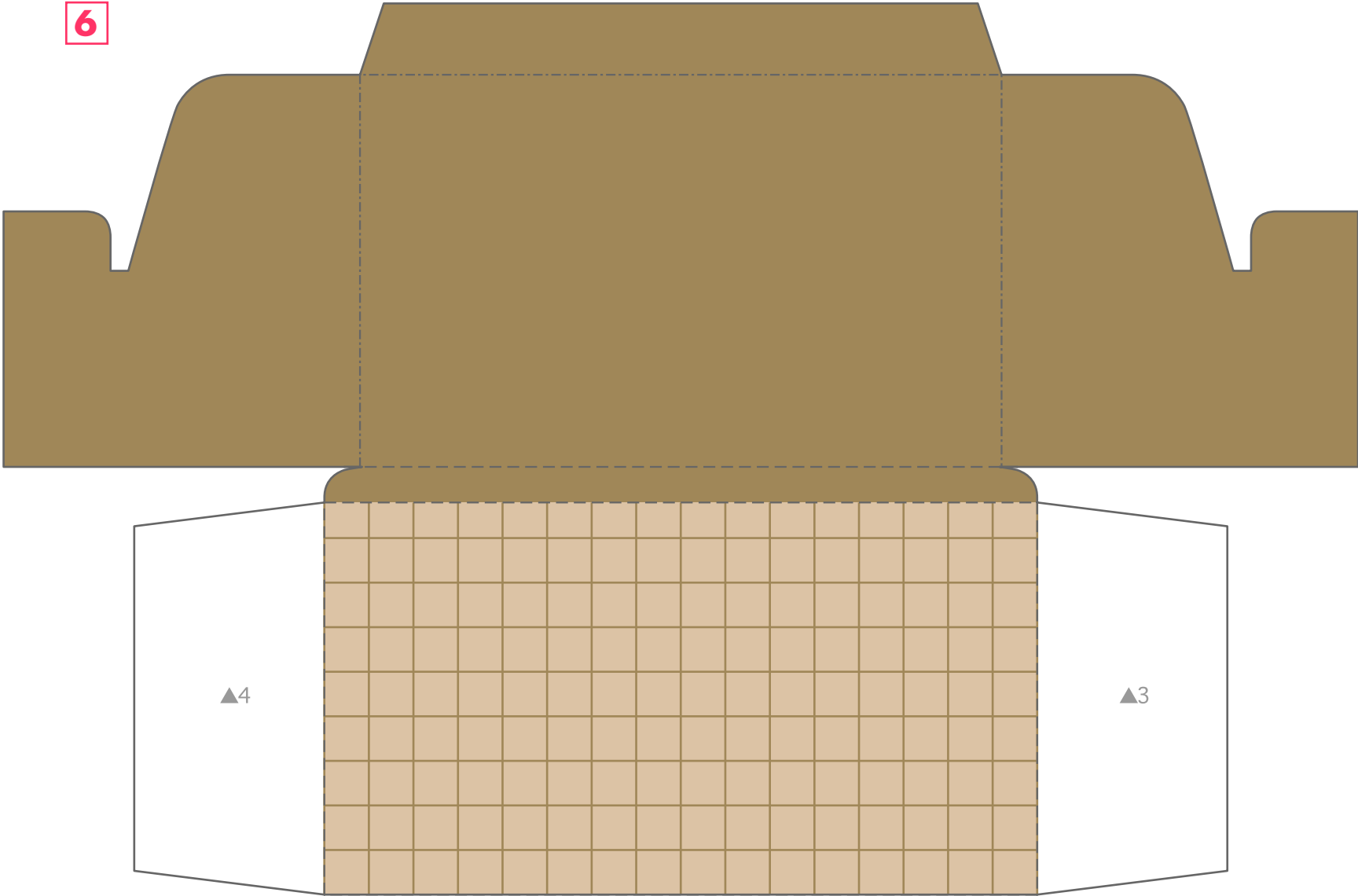


Canon Gift box D (Brown) : Parts

Canon ® is a registered trademark of Canon Inc. © Canon Inc. © Yukiko Tanikoshi

Parts

6

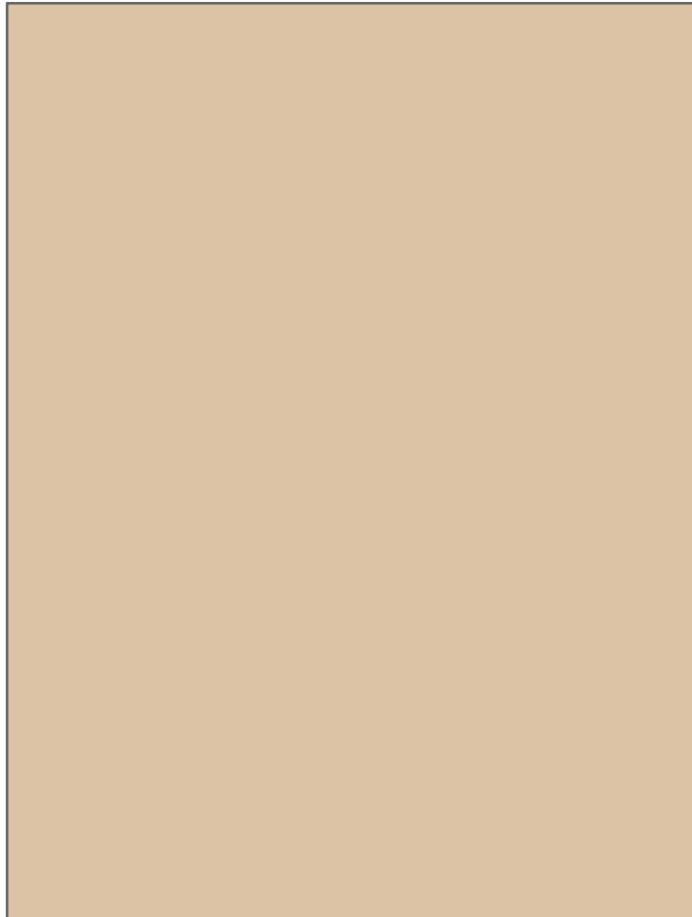


Canon Gift box D (Brown) : Parts

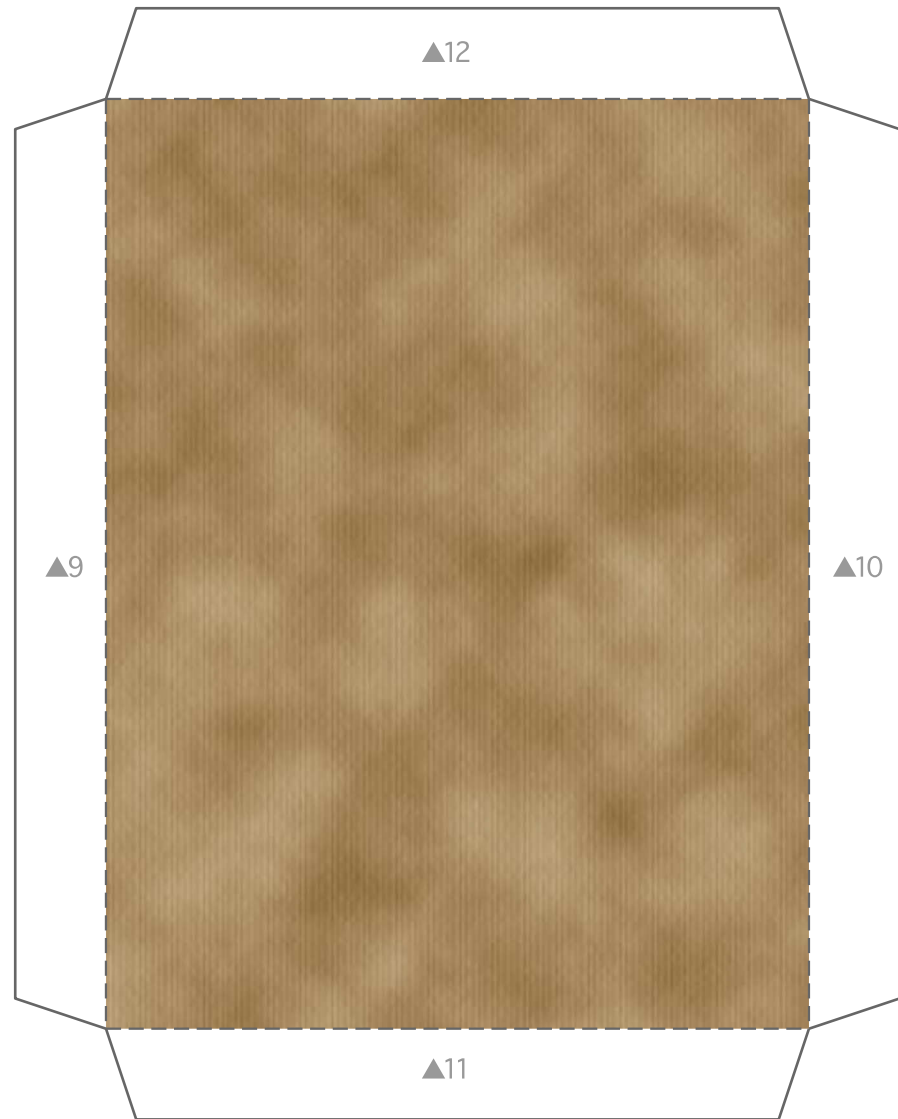
Canon ® is a registered trademark of Canon Inc. © Canon Inc. © Yukiko Tanikoshi

Parts

7



8

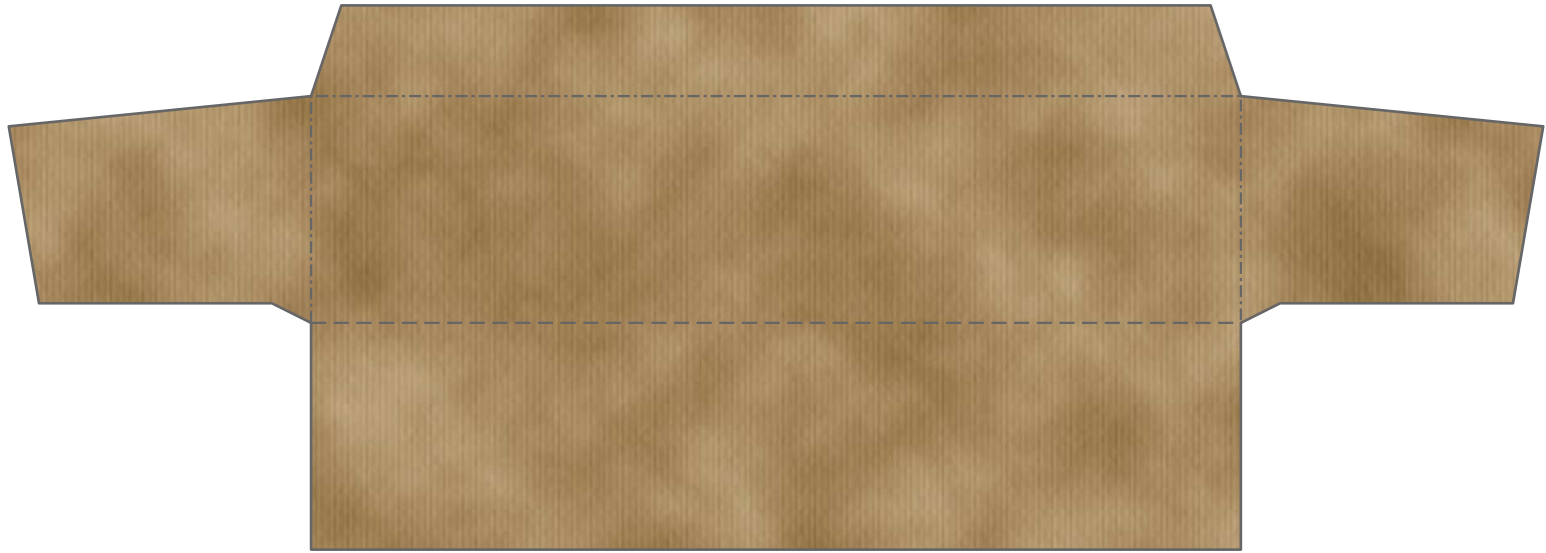


Canon Gift box D (Brown) : Parts

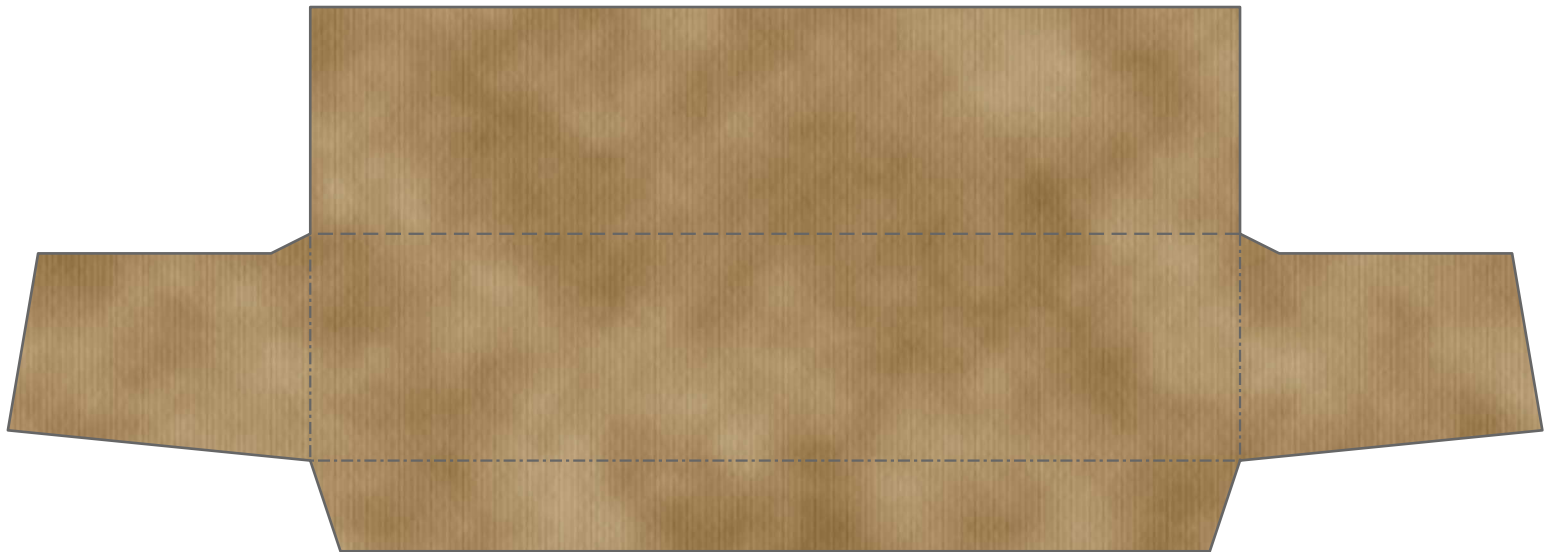
Canon ® is a registered trademark of Canon Inc. © Canon Inc. © Yukiko Tanikoshi

Parts

9



10

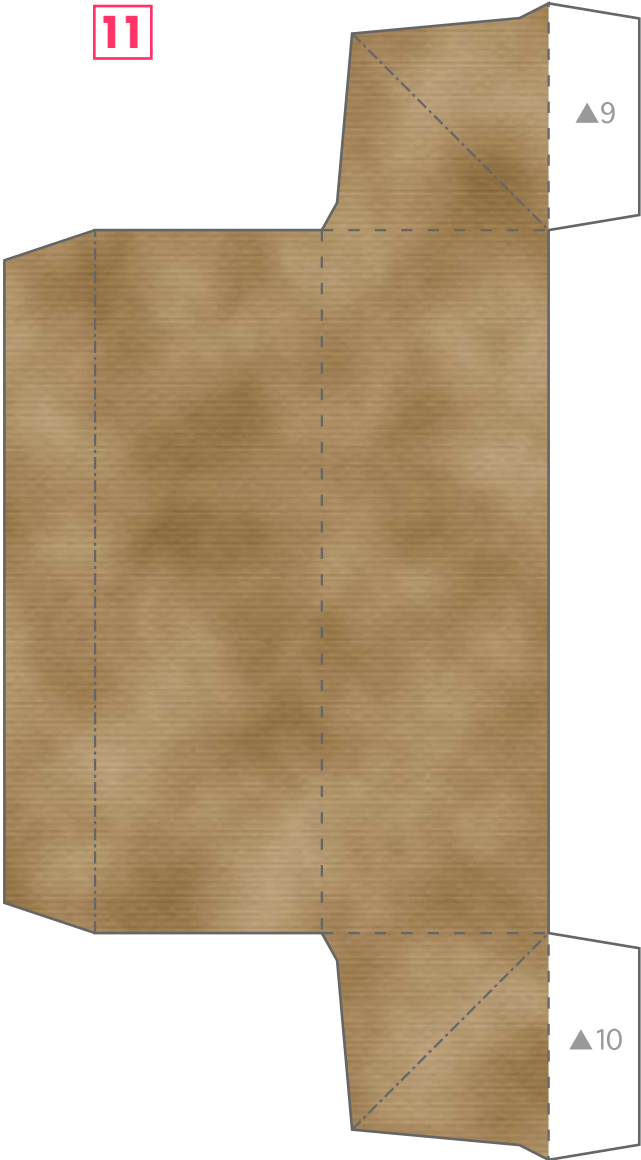


Canon Gift box D (Brown) : Parts

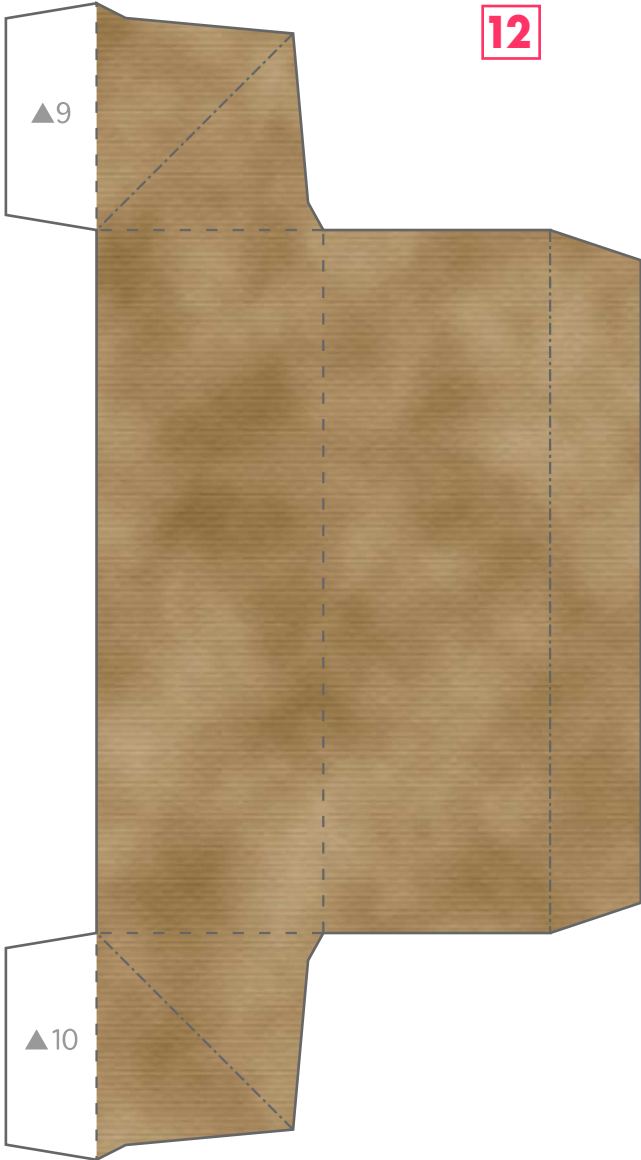
Canon ® is a registered trademark of Canon Inc. © Canon Inc. © Yukiko Tanikoshi

Parts

11



12

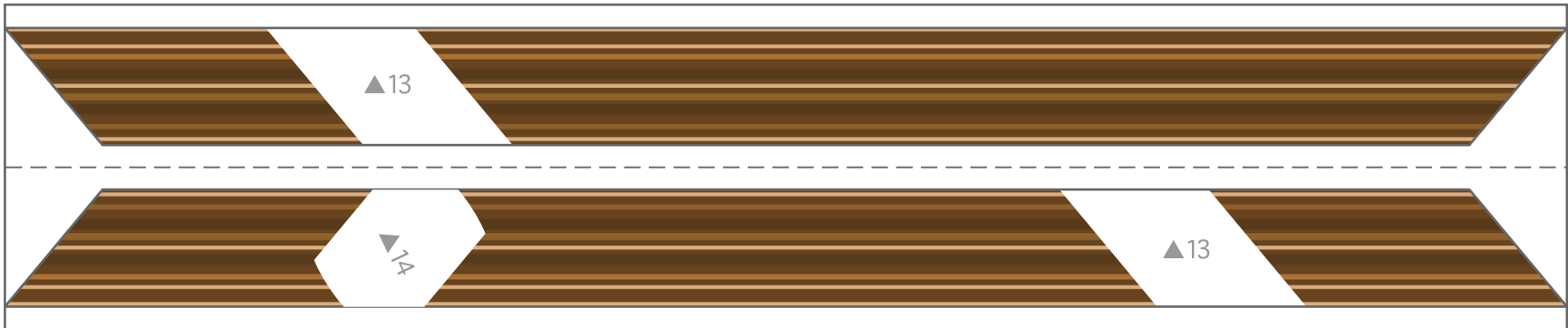


Canon Gift box D (Brown) : Parts

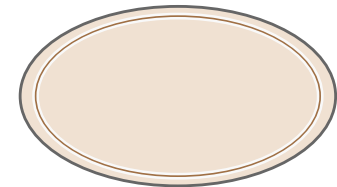
Canon® is a registered trademark of Canon Inc. © Canon Inc. © Yukiko Tanikoshi

Parts

13



14



Canon Gift box D (Brown) : Parts

Canon ® is a registered trademark of Canon Inc. © Canon Inc. © Yukiko Tanikoshi

Parts

15

