

Canon Gift box C (Red) : Parts

Canon ® is a registered trademark of Canon Inc. © Canon Inc. © Yukiko Tanikoshi



You will need

scissors, paste, a used ballpoint pen (tracing along the fold lines makes them easier to fold)

Explanation of Symbols

▲ Numbered glue tabs

Glue the parts together in the order indicated by the numbers.



[Caution]

Glue, scissors and other tools may be dangerous to young children so be sure to keep them out of the reach of young children.

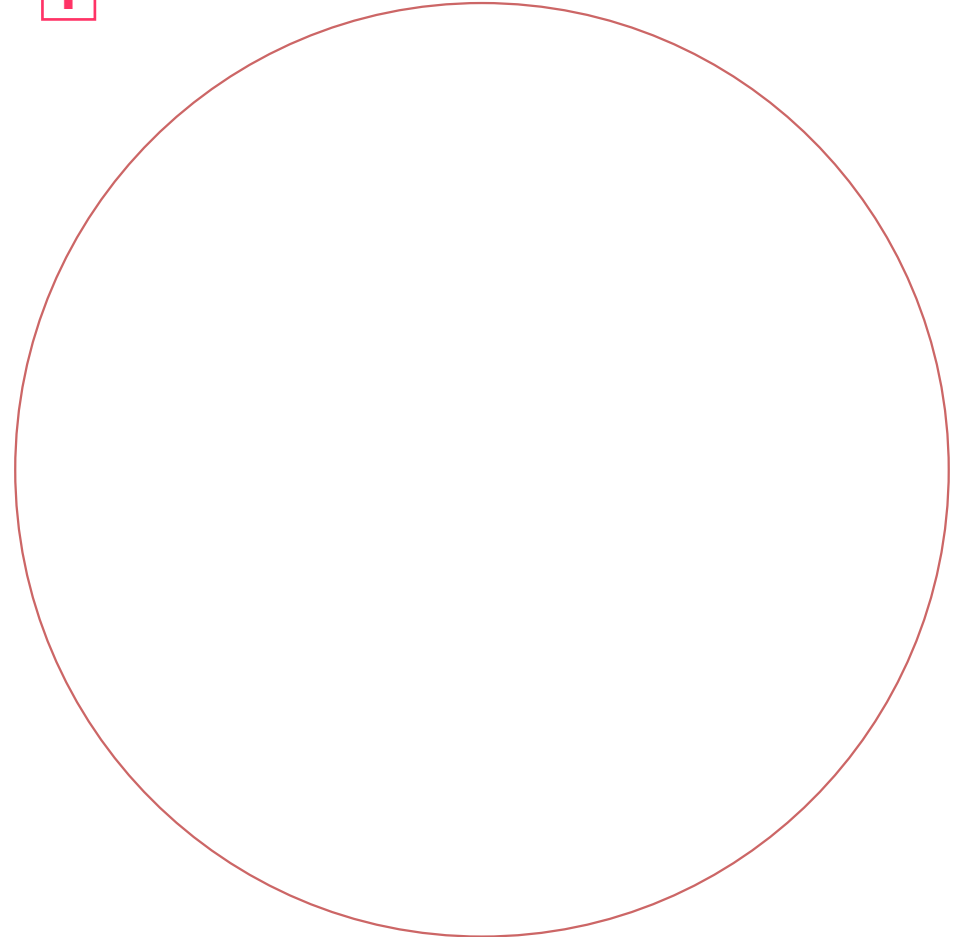
Parts

— Cut line

— Mountain fold

— Valley fold

1

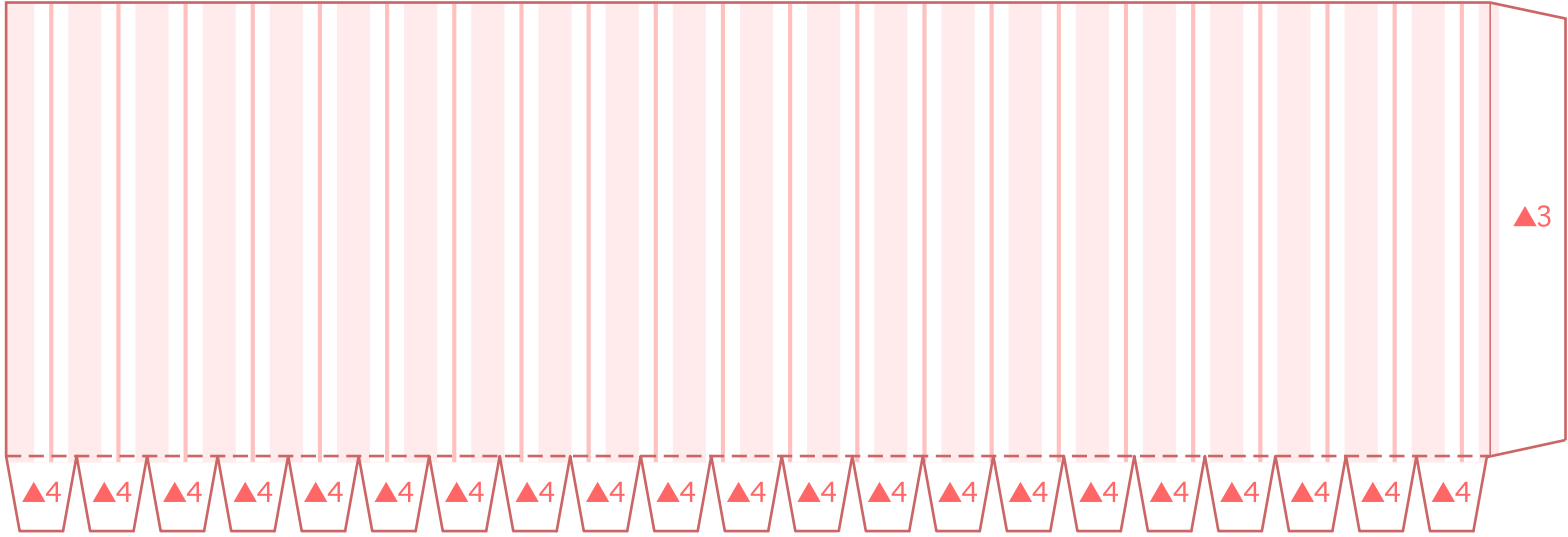


Canon Gift box C (Red) : Parts

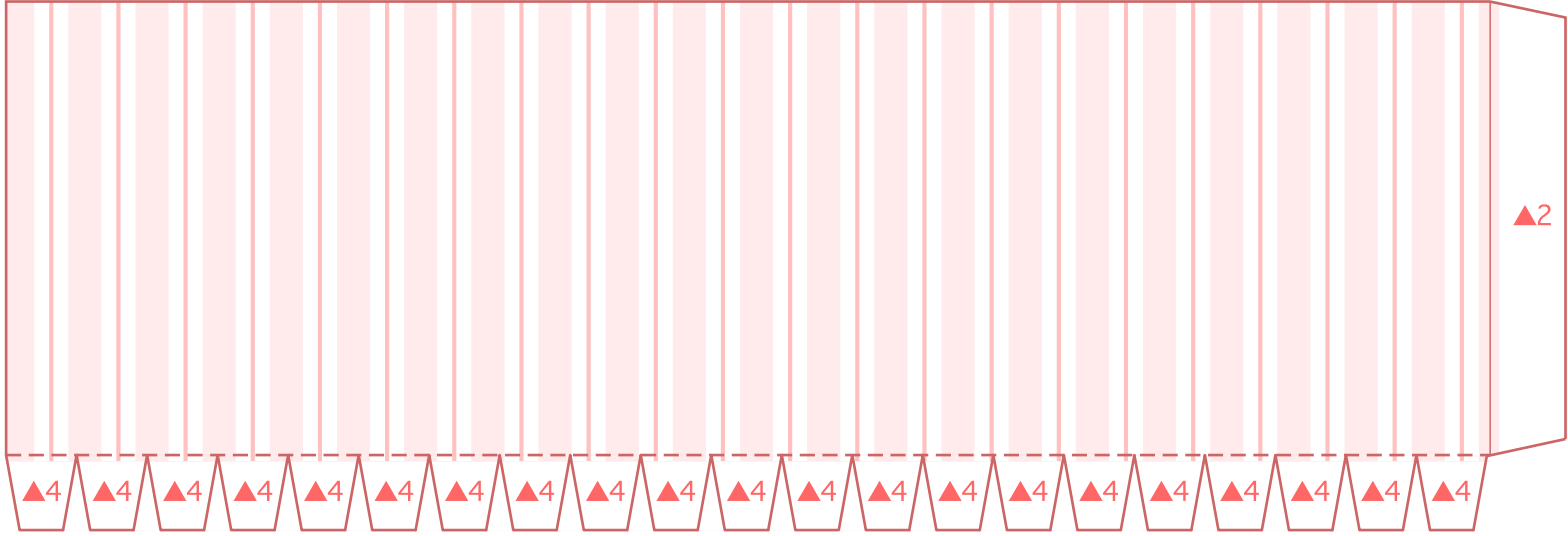
Canon ® is a registered trademark of Canon Inc. © Canon Inc. © Yukiko Tanikoshi

Parts

2

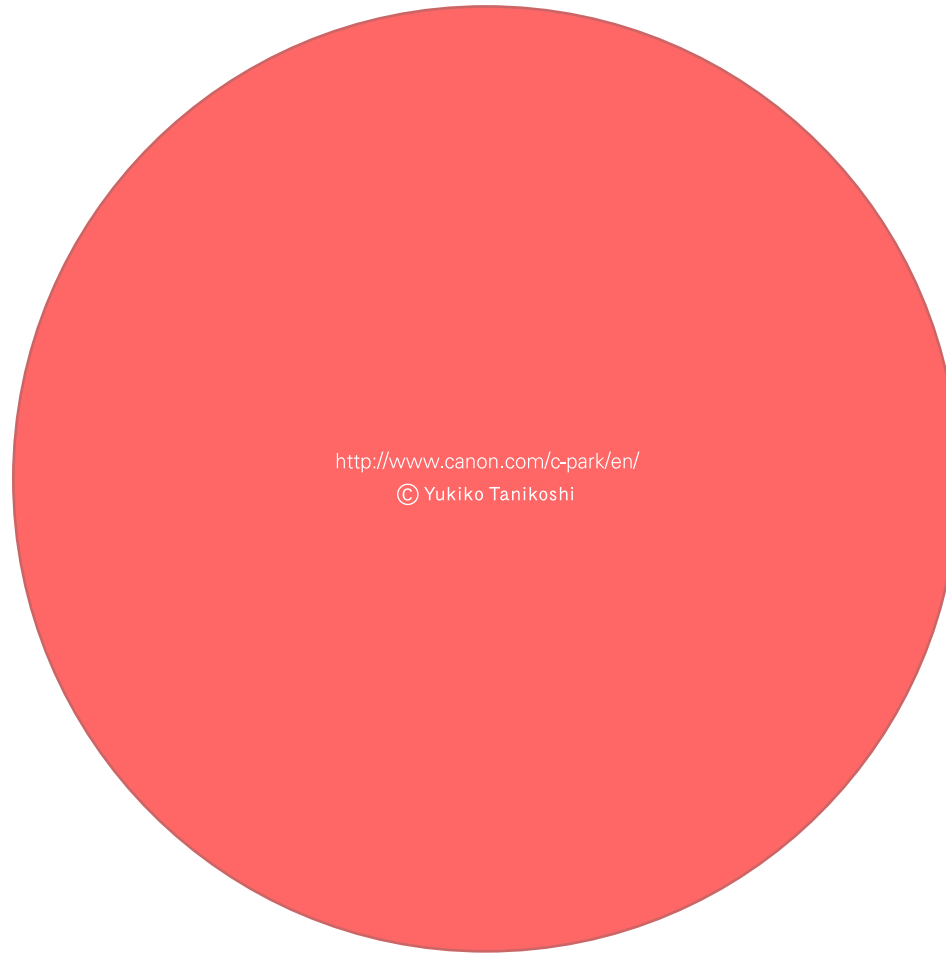


3



Parts

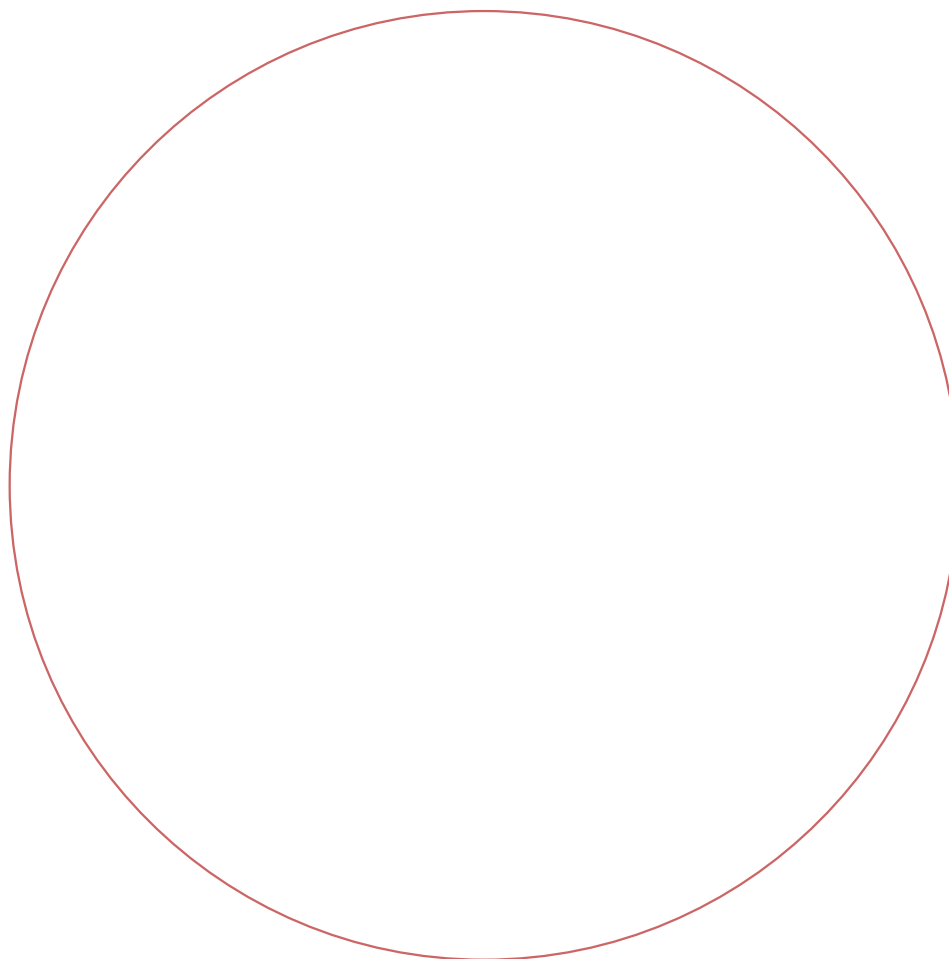
4



<http://www.canon.com/c-park/en/>
© Yukiko Tanikoshi

Parts

5

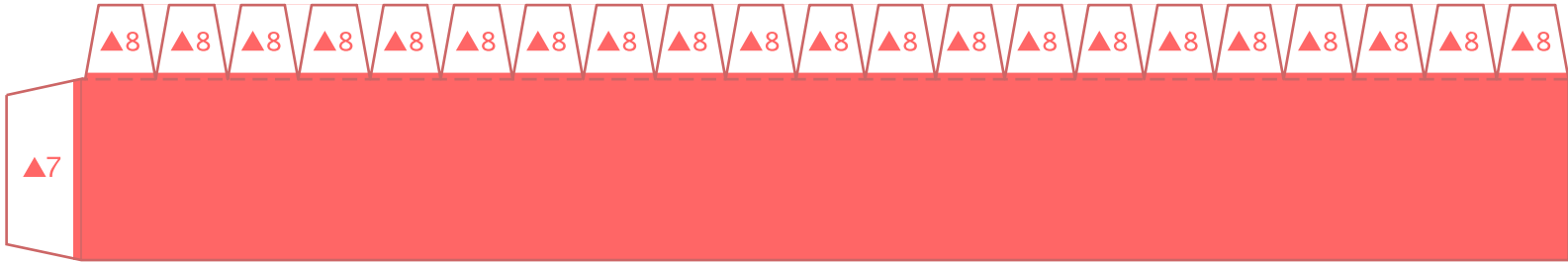


Canon Gift box C (Red) : Parts

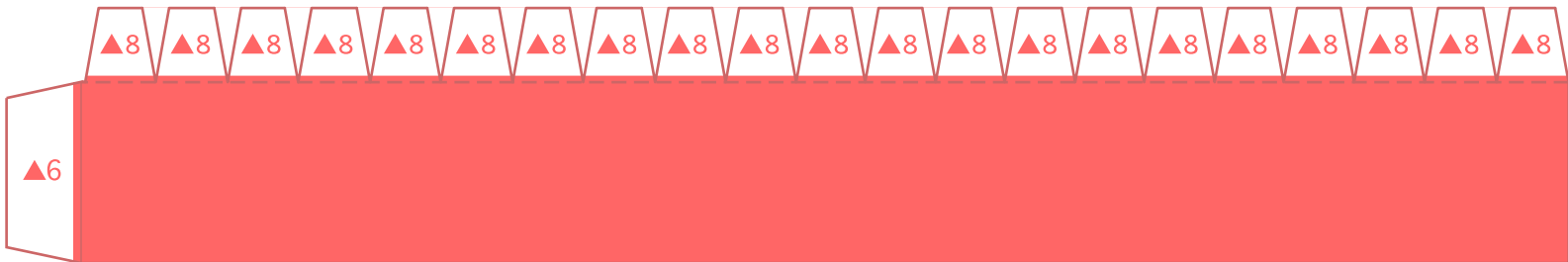
Canon ® is a registered trademark of Canon Inc. © Canon Inc. © Yukiko Tanikoshi

Parts

6



7



Parts

8

