

# Canon Gift box C (Red) : Parts

Canon® is a registered trademark of Canon Inc. © Canon Inc. © Yukiko Tanikoshi



## You will need

scissors, paste, a used ballpoint pen (tracing along the fold lines makes them easier to fold)

## Explanation of Symbols

### ▲ Numbered glue tabs

Glue the parts together in the order indicated by the numbers.



**[Caution]**

Glue, scissors and other tools may be dangerous to young children so be sure to keep them out of the reach of young children.

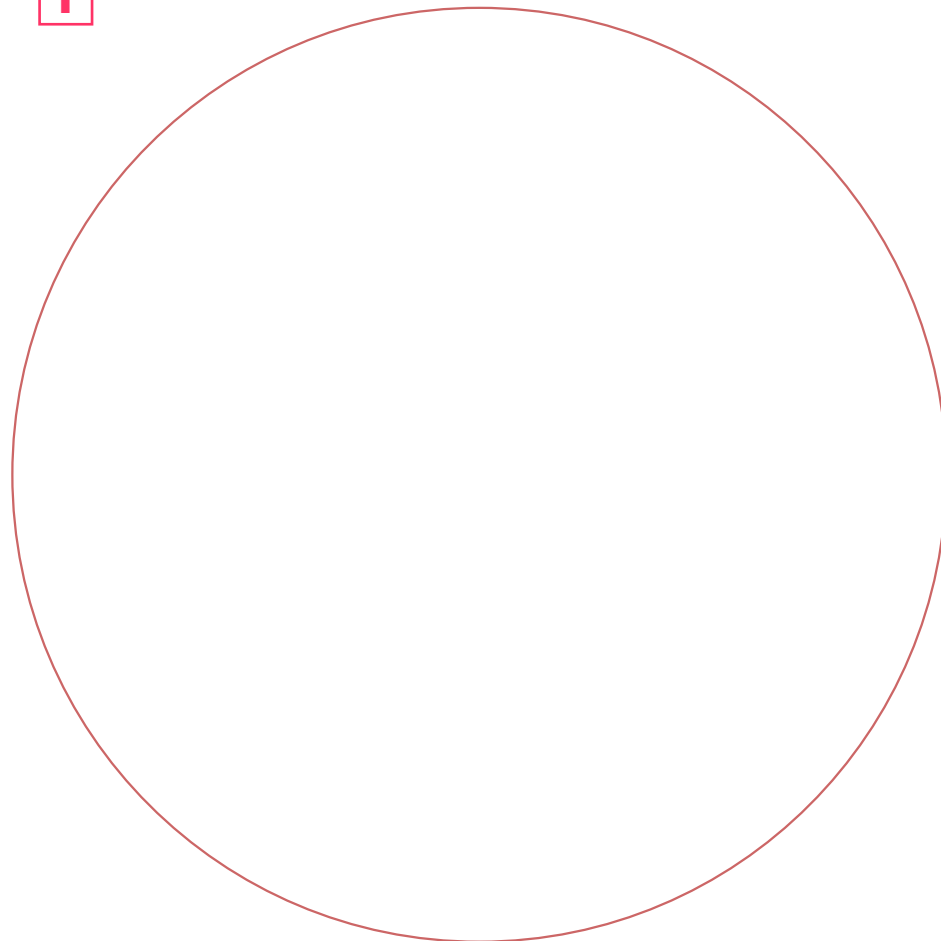
## Parts

— Cut line

— Mountain fold

— Valley fold

1

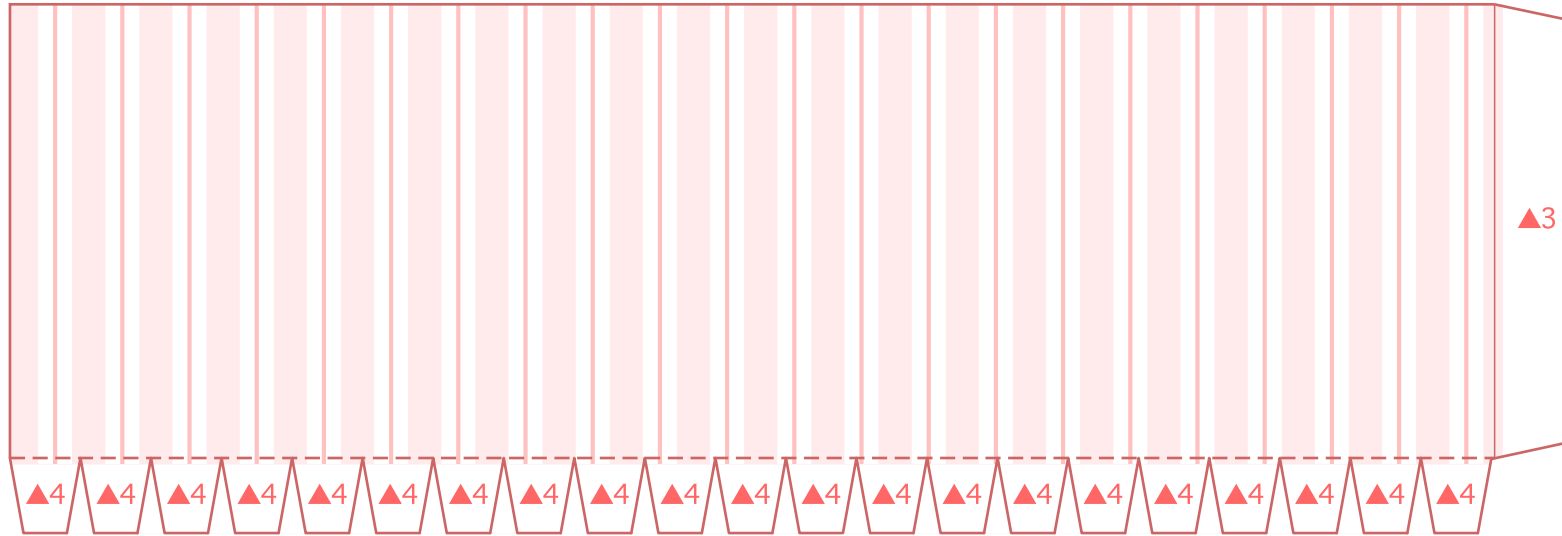


# Canon Gift box C (Red) : Parts

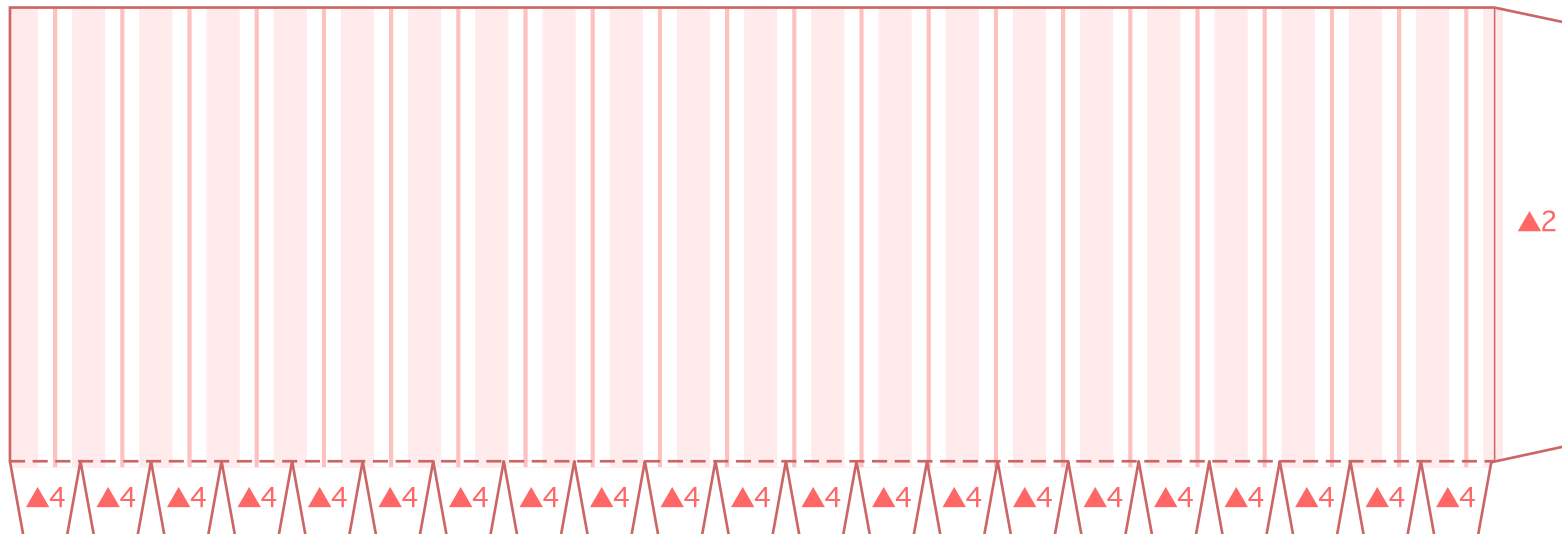
Canon® is a registered trademark of Canon Inc. © Canon Inc. © Yukiko Tanikoshi

## Parts

2

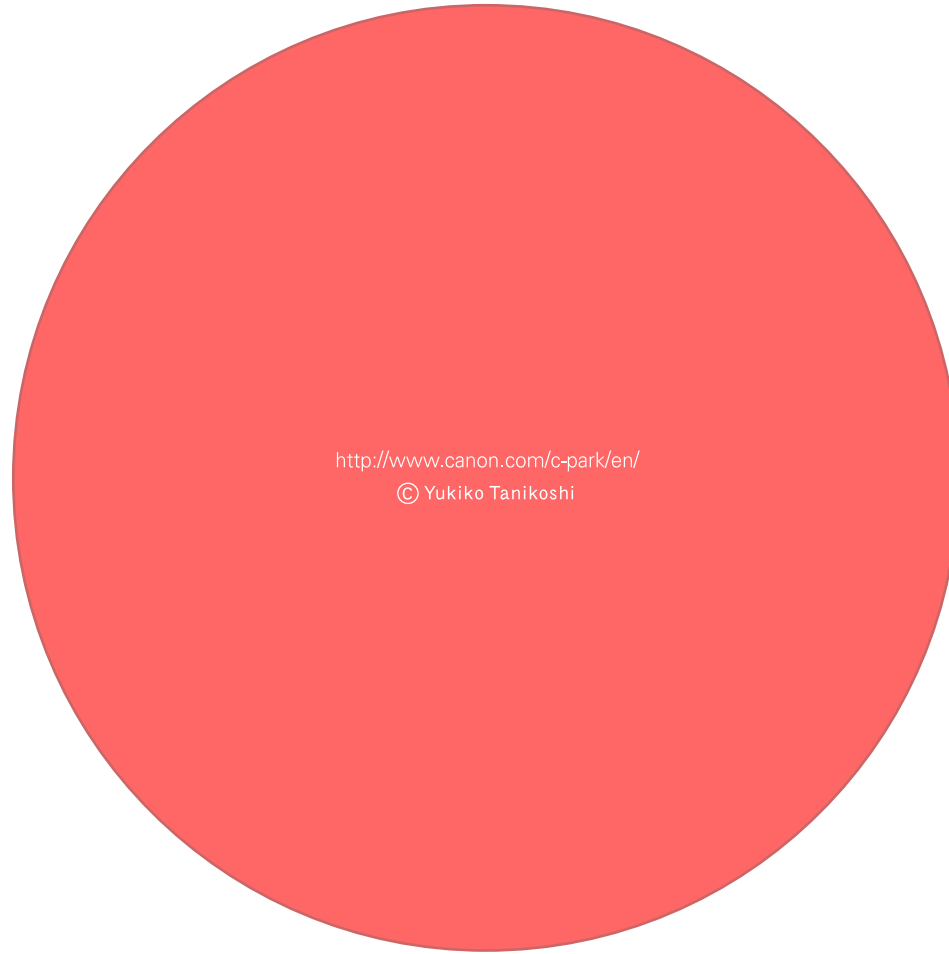


3



## Parts

4



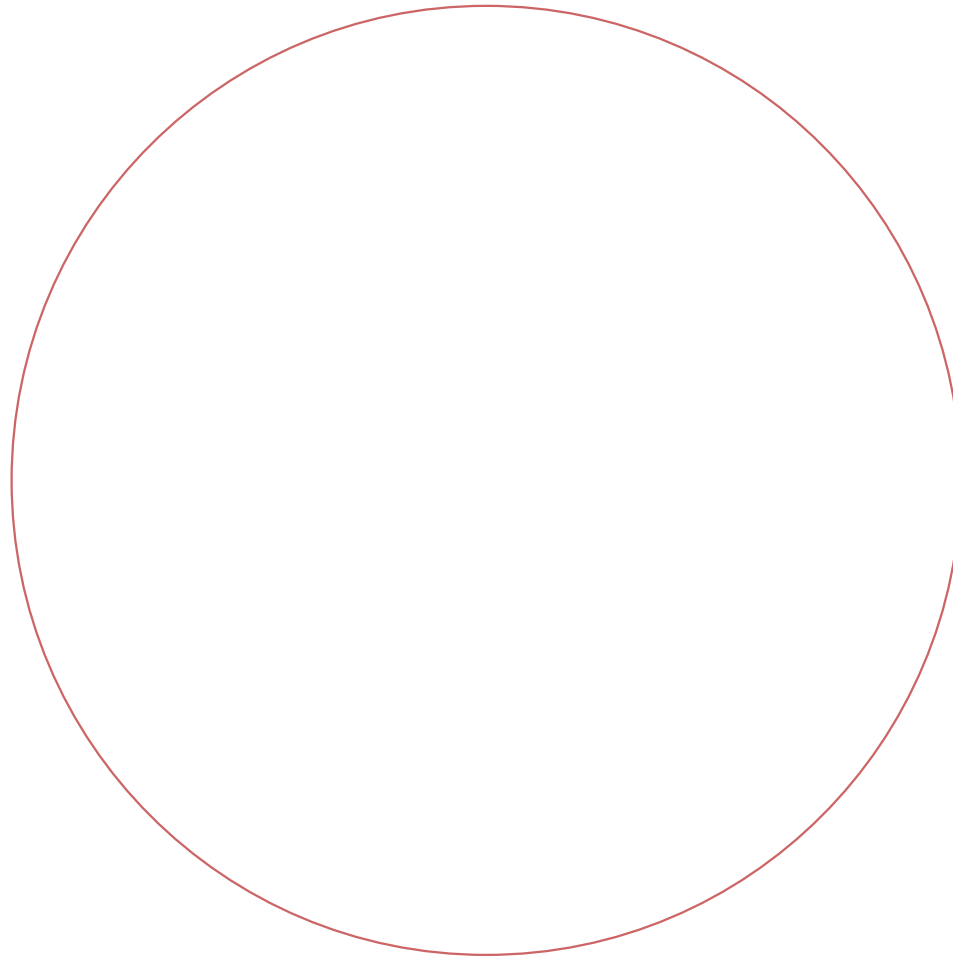
<http://www.canon.com/c-park/en/>  
© Yukiko Tanikoshi

# Canon Gift box C (Red) : Parts

Canon® is a registered trademark of Canon Inc. © Canon Inc. © Yukiko Tanikoshi

Parts

5

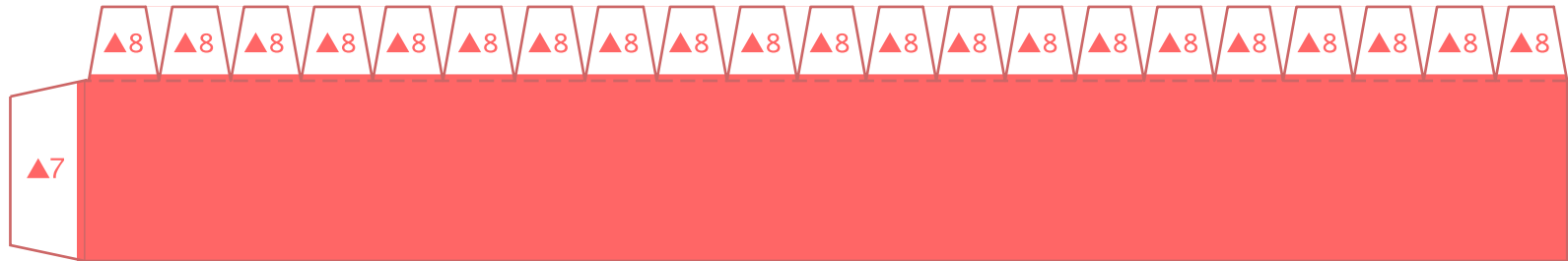


# Canon Gift box C (Red) : Parts

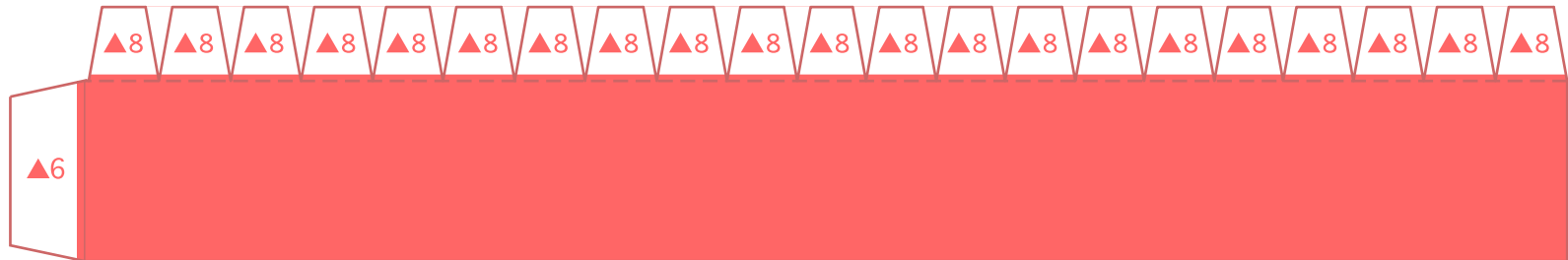
Canon® is a registered trademark of Canon Inc. © Canon Inc. © Yukiko Tanikoshi

## Parts

6



7



Parts

8

