

Canon Gift box B (Red) : Assembly Instructions

Canon ® is a registered trademark of Canon Inc. © Canon Inc. © Yukiko Tanikoshi



<http://www.canon.com/c-park/en/>



You will need

scissors, paste, a used ballpoint pen (tracing along the fold lines makes them easier to fold)

Explanation of Symbols

▲ Numbered glue tabs

Glue the parts together in the order indicated by the numbers.



[Caution]

Glue, scissors and other tools may be dangerous to young children so be sure to keep them out of the reach of young children.

Assembly procedure

—— Cut line

----- Mountain fold

- - - - - Valley fold

★STEP★

1 Assemble the sides of the box

Crease along the mountain fold and valley fold lines.
Paste Part [2] and Part [3].

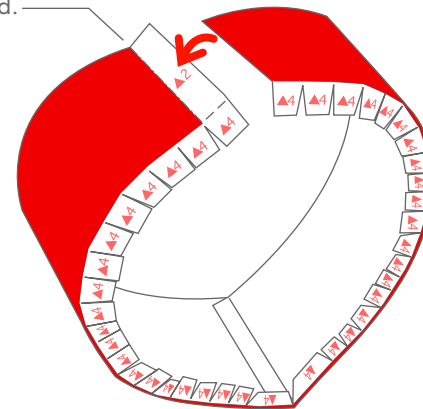


Part [2]



Part [3]

Make a valley fold.



Make a mountain fold.

Canon Gift box B (Red) : Assembly Instructions

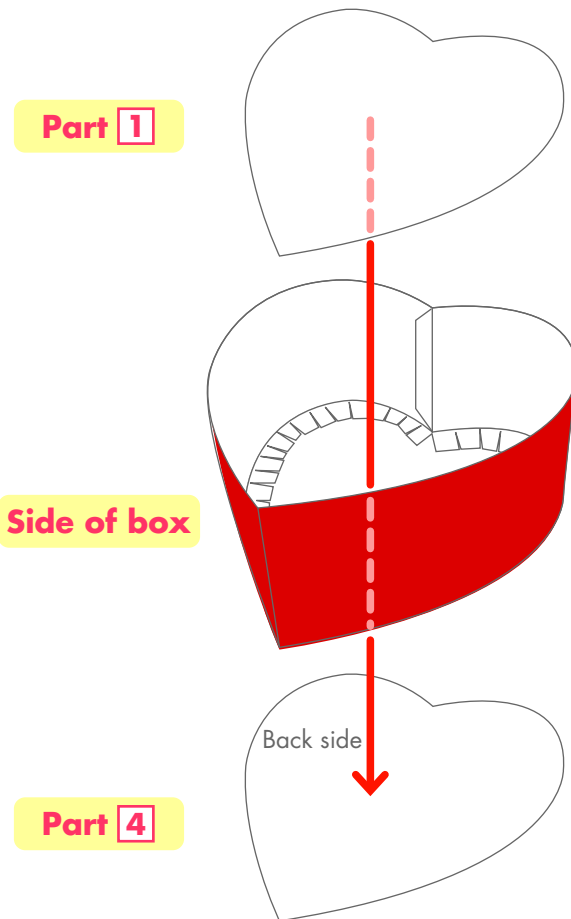
Canon ® is a registered trademark of Canon Inc. © Canon Inc. © Yukiko Tanikoshi

Assembly procedure

★STEP★

2 Assemble the box

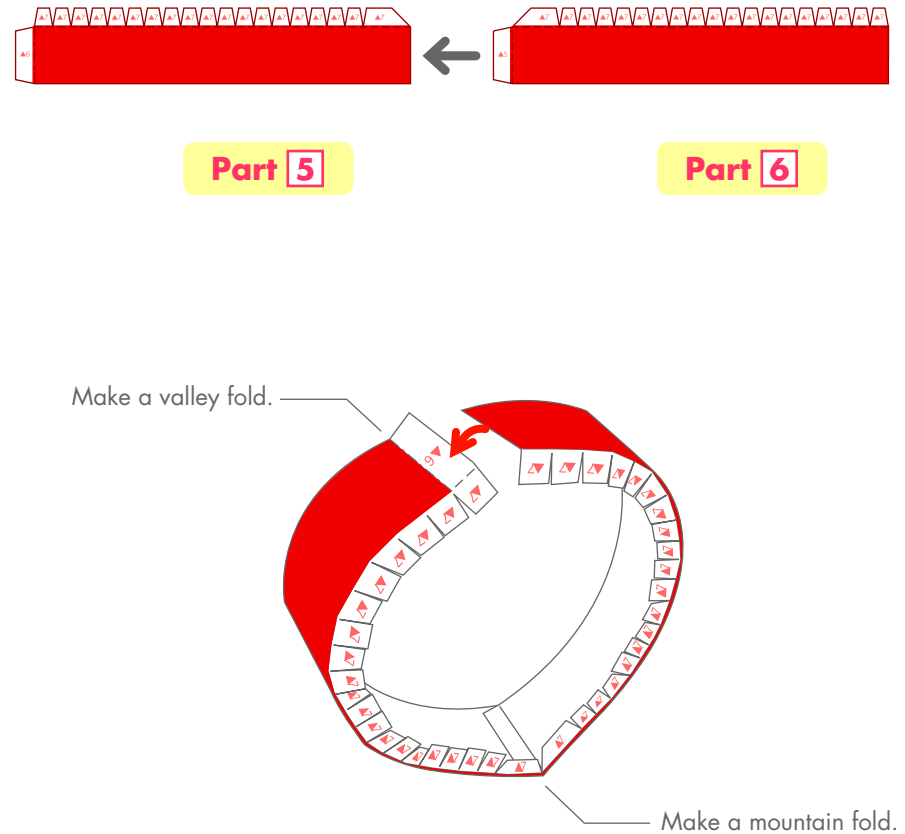
Paste the 'side of the box' made in Step 1 to Part 4.
Apply glue all over the back of Part 1 and paste it on.



★STEP★

3 Assemble the sides of the lid

Crease along the mountain fold and valley fold lines.
Paste Part 5 and Part 6.



Canon Gift box B (Red) : Assembly Instructions

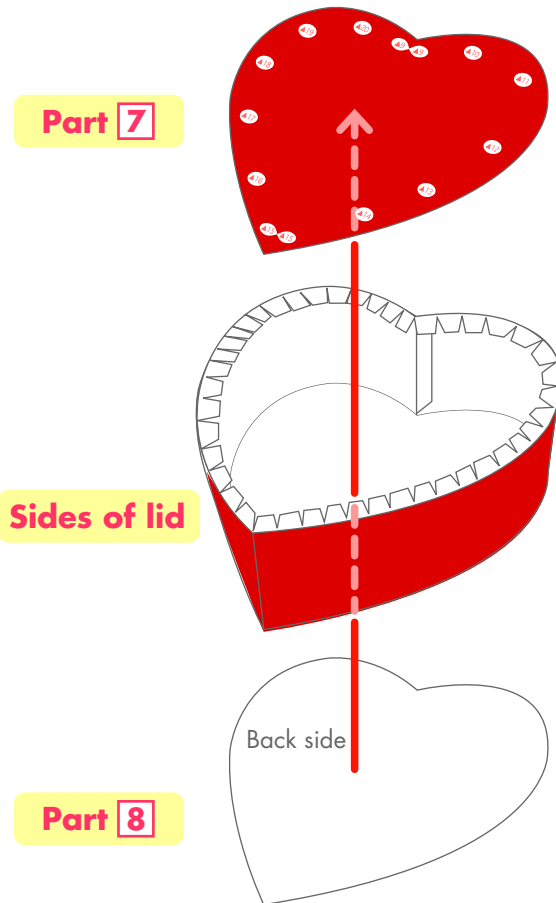
Canon ® is a registered trademark of Canon Inc. © Canon Inc. © Yukiko Tanikoshi

Assembly procedure

STEP

4 Assemble the lid

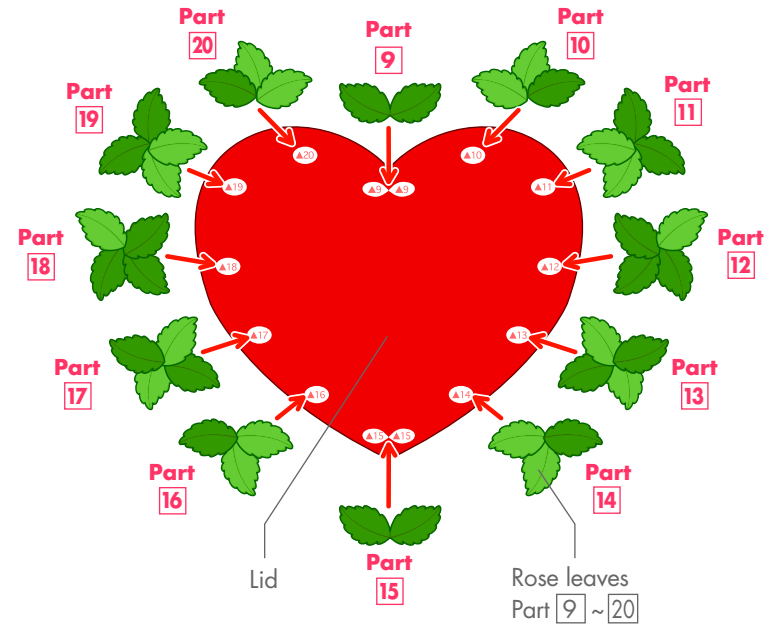
Stick the 'sides of the lid' made in Step 3 onto Part 7.
Apply glue all over the back of Part 8 and stick it on.



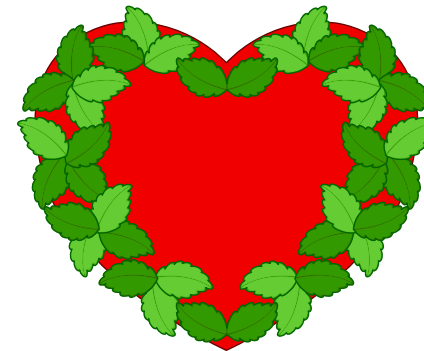
STEP

5 Decorate the lid with leaves

Paste Part 9 ~ 20 to the lid.



*Completed layout of rose petals.



Canon Gift box B (Red) : Assembly Instructions

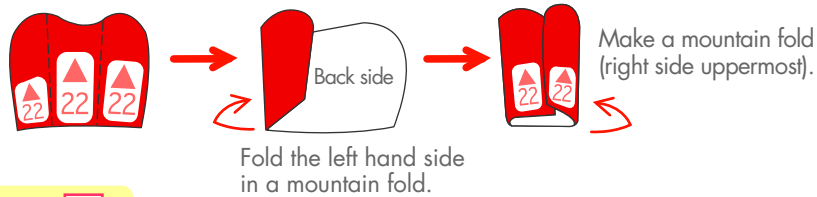
Canon ® is a registered trademark of Canon Inc. © Canon Inc. © Yukiko Tanikoshi

Assembly procedure

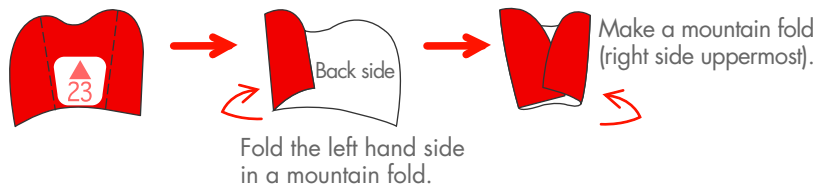
STEP 6 Assemble inner petals

Make creases in Part 21 and Part 22.

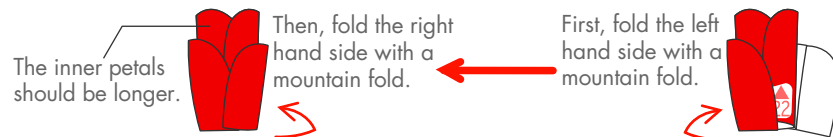
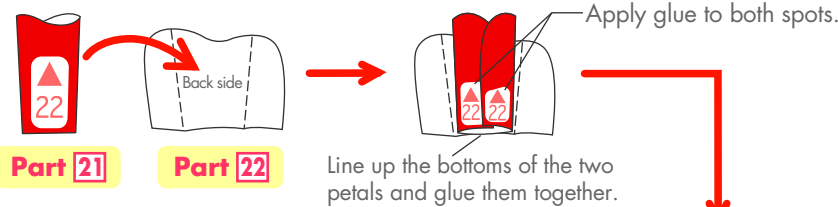
Part 21



Part 22



Open up the creased Part 22 and fit the folded Part 21 into the centre of it and glue it into place.



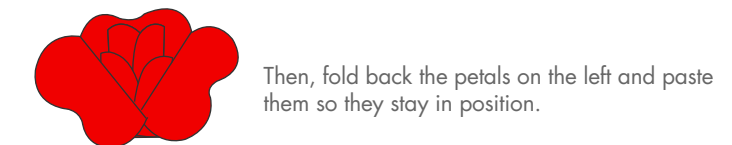
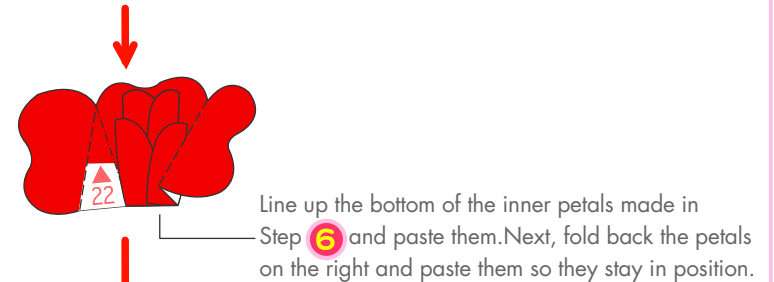
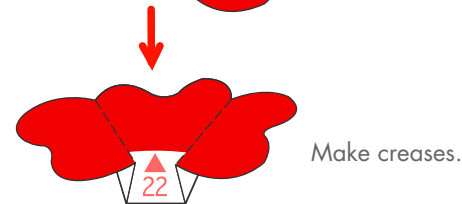
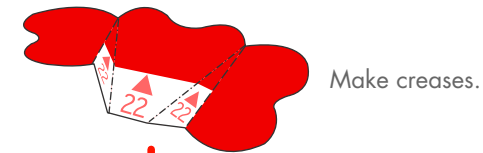
Completed inner petals

STEP 7 Assemble outer petals

Make creases in Part 23.

Line up the bottom of the inner petals made in Step 6 with the middle of Part 23.

Part 23

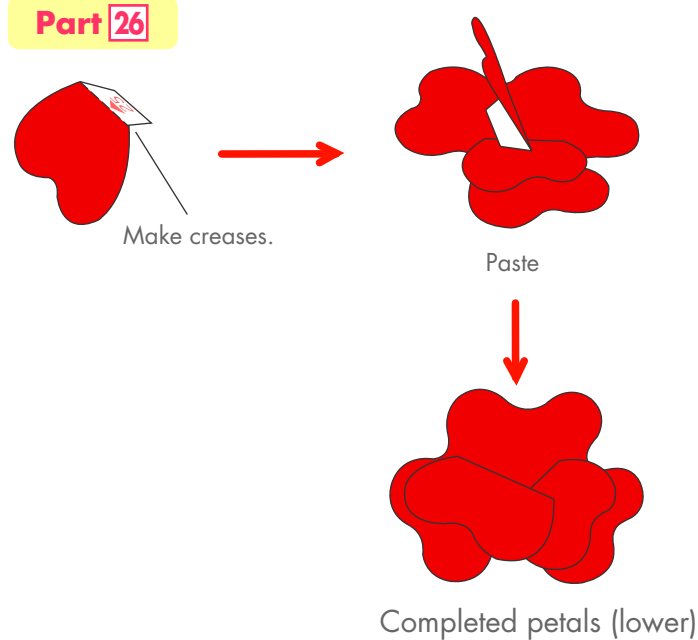
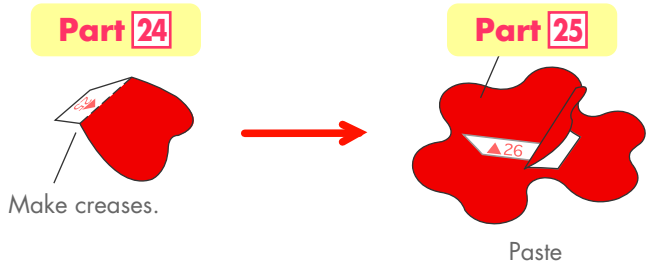


Completed petals (upper)

Assembly procedure

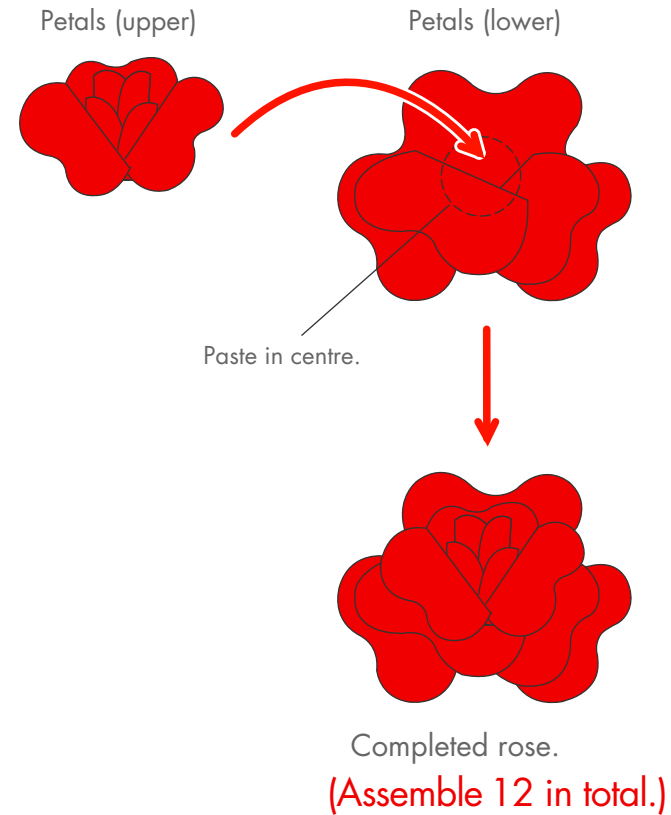
STEP 8 Assemble petals (lower)

Make creases in Part 24 and Part 26.
Paste Part 24 onto Part 25. Then, paste on Part 26.



STEP 9 Assemble flowers

Paste the petals (upper) that you assembled in Step 7 onto the petals (lower) that you assembled in Step 8.



Canon Gift box B (Red) : Assembly Instructions

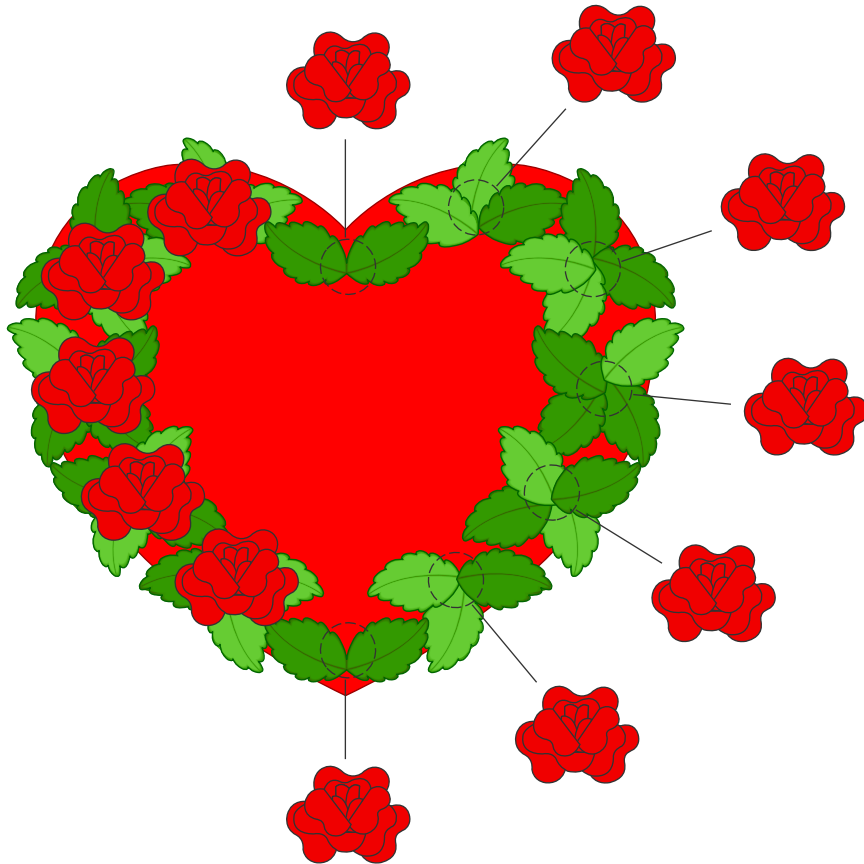
Canon ® is a registered trademark of Canon Inc. © Canon Inc. © Yukiko Tanikoshi

Assembly procedure

STEP
10

Decorate the lid with the roses

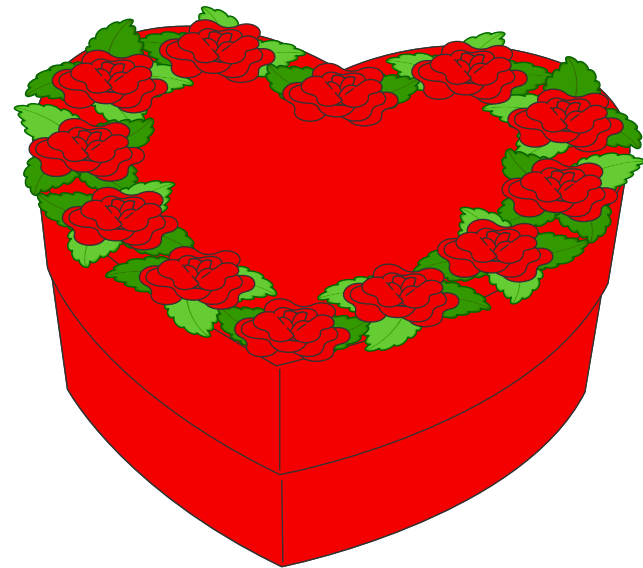
Paste the roses onto the circles on the rose leaves on the lid of the box.



STEP
11

Assemble the whole box

The box is complete once you have fitted the lid on to it.



*Once you have pasted on all 12 roses, you're finished!