

# Canon Gift box B (Red) : Parts

Canon ® is a registered trademark of Canon Inc. © Canon Inc. © Yukiko Tanikoshi



<http://www.canon.com/c-park/en/>



## You will need

scissors, paste, a used ballpoint pen (tracing along the fold lines makes them easier to fold)

## Explanation of Symbols

### ▲ Numbered glue tabs

Glue the parts together in the order indicated by the numbers.



**[Caution]**

Glue, scissors and other tools may be dangerous to young children so be sure to keep them out of the reach of young children.

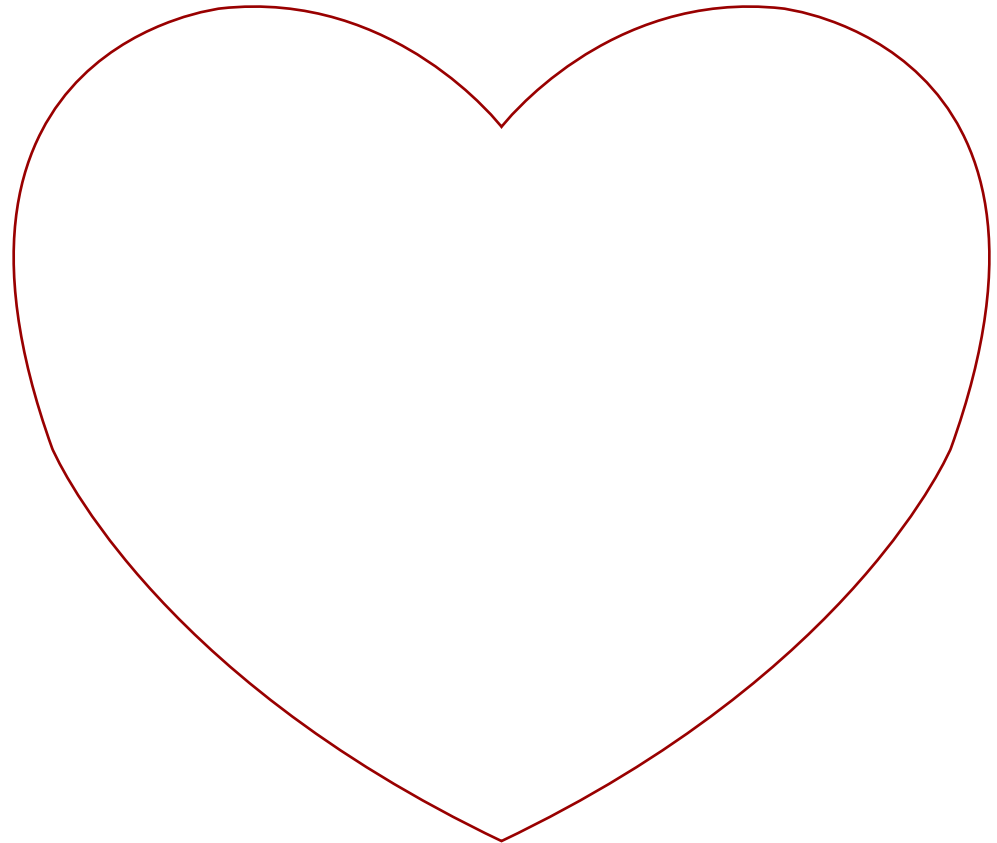
Parts

— Cut line

--- Mountain fold

- - - - - Valley fold

1

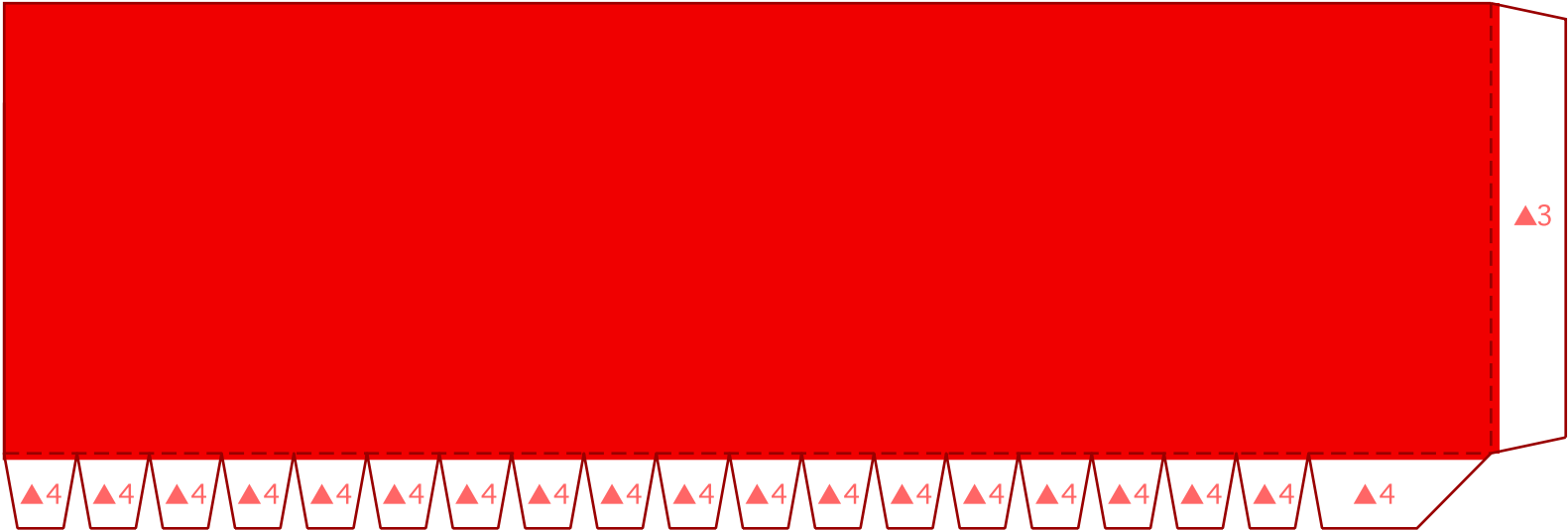


# Canon Gift box B (Red) : Parts

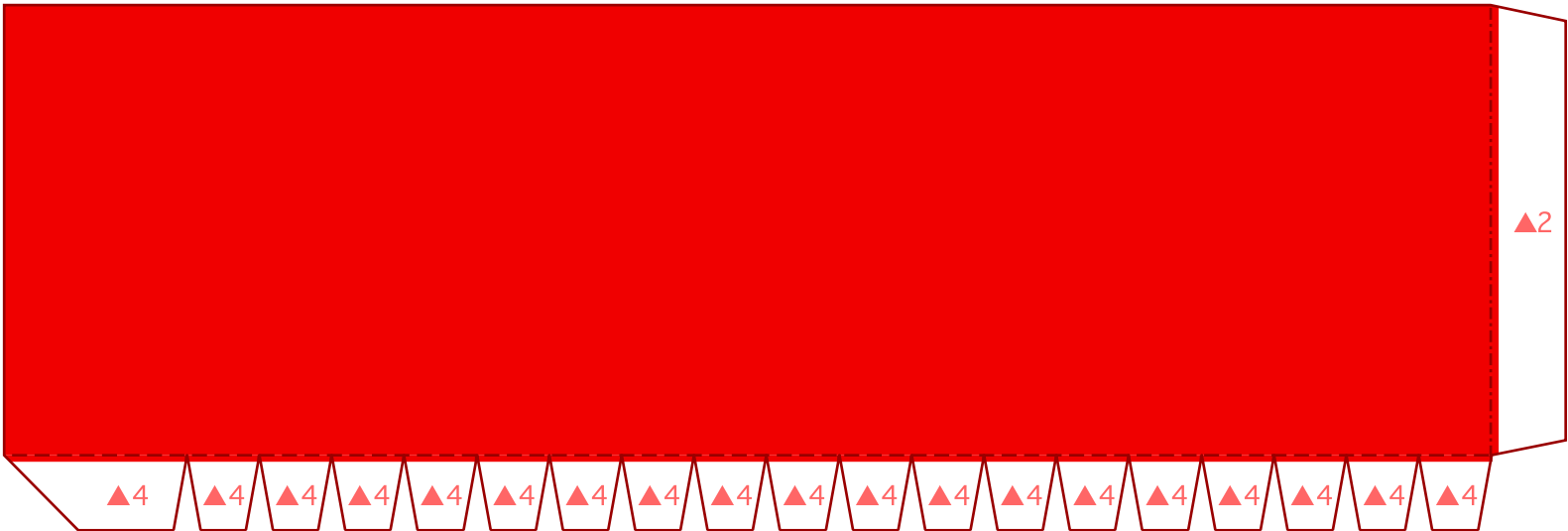
Canon ® is a registered trademark of Canon Inc. © Canon Inc. © Yukiko Tanikoshi

## Parts

2



3



## Parts

4



<http://www.canon.com/c-park/en/>

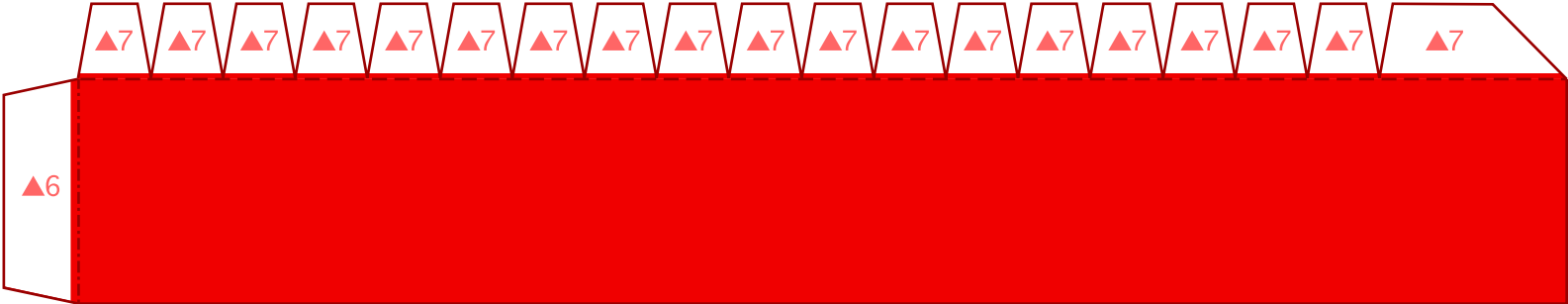
© Yukiko Tanikoshi

# Canon Gift box B (Red) : Parts

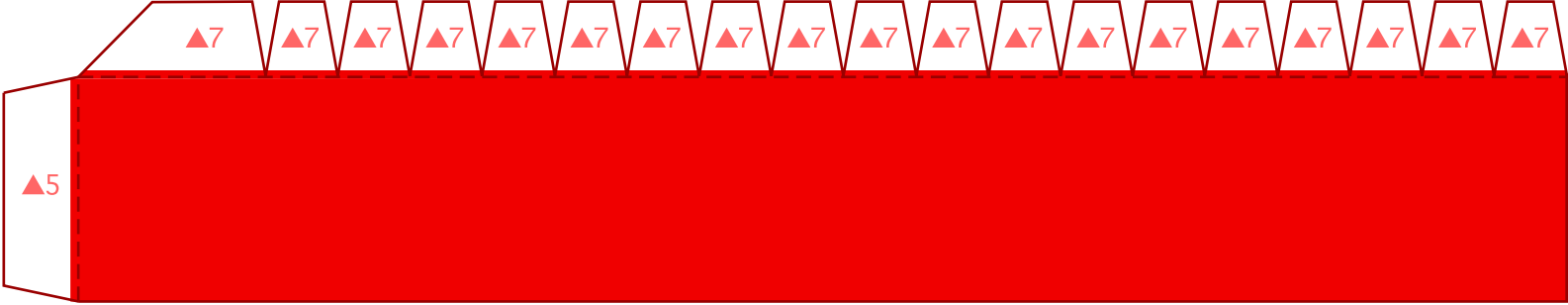
Canon ® is a registered trademark of Canon Inc. © Canon Inc. © Yukiko Tanikoshi

## Parts

5



6

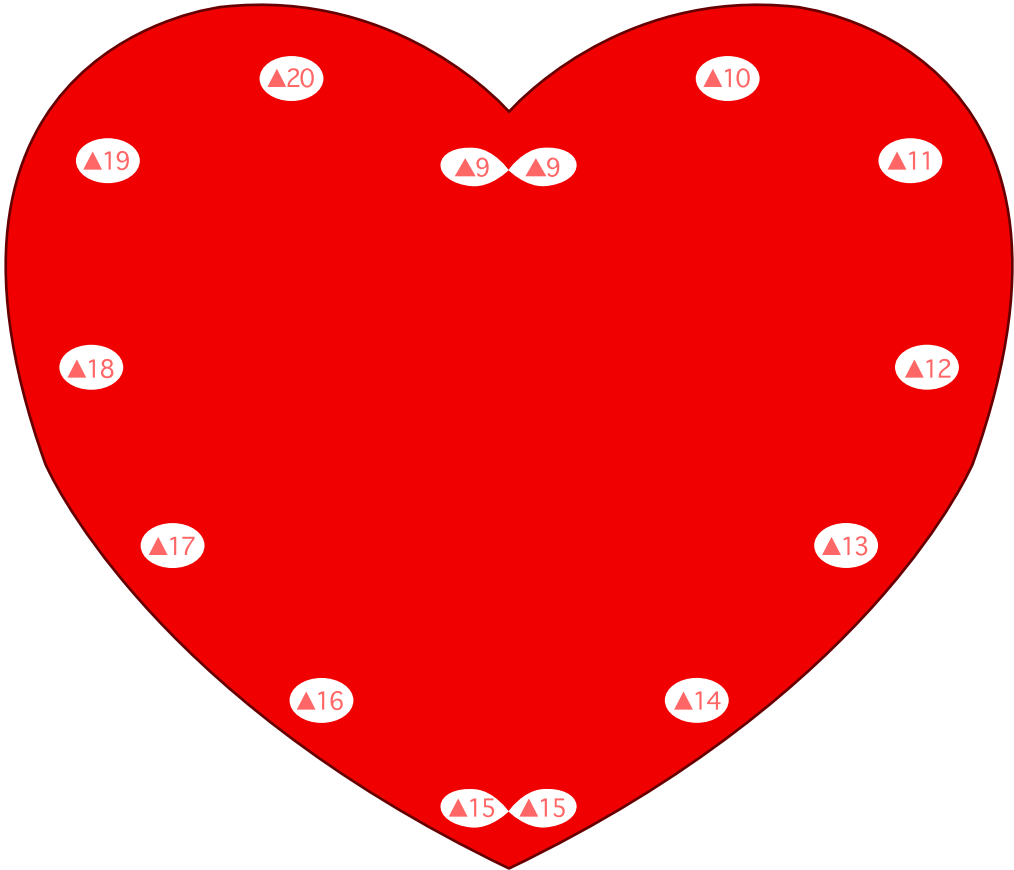


# Canon Gift box B (Red) : Parts

Canon ® is a registered trademark of Canon Inc. © Canon Inc. © Yukiko Tanikoshi

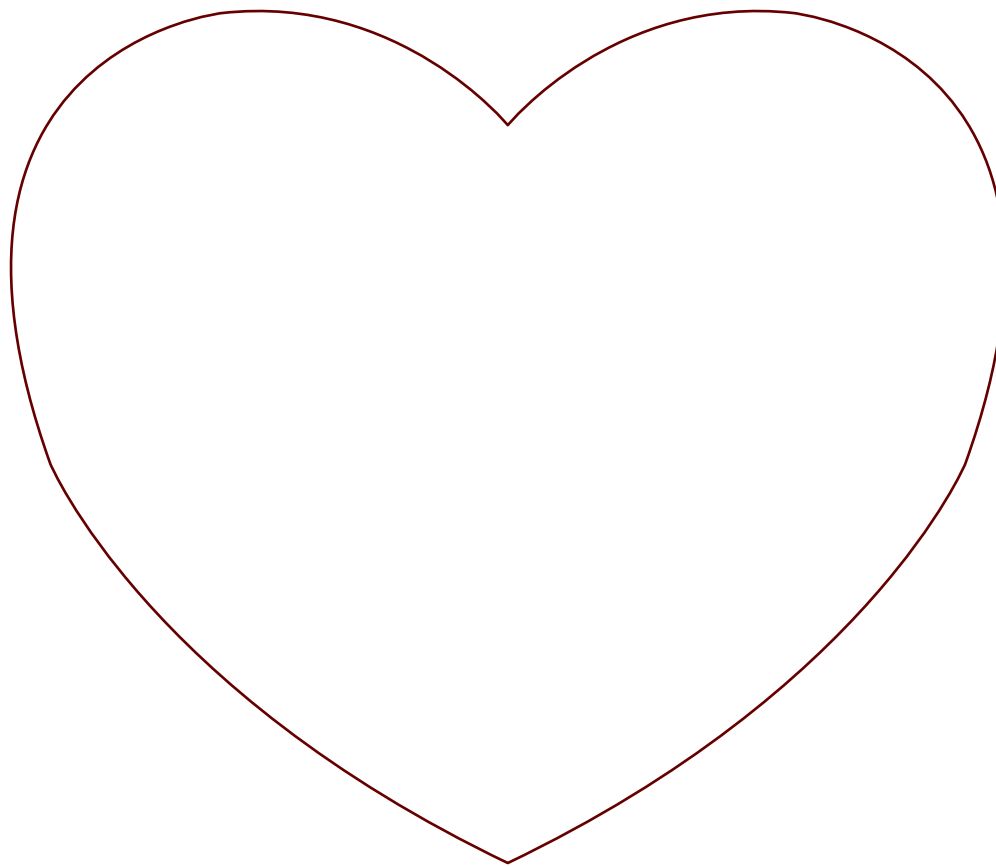
## Parts

7



Parts

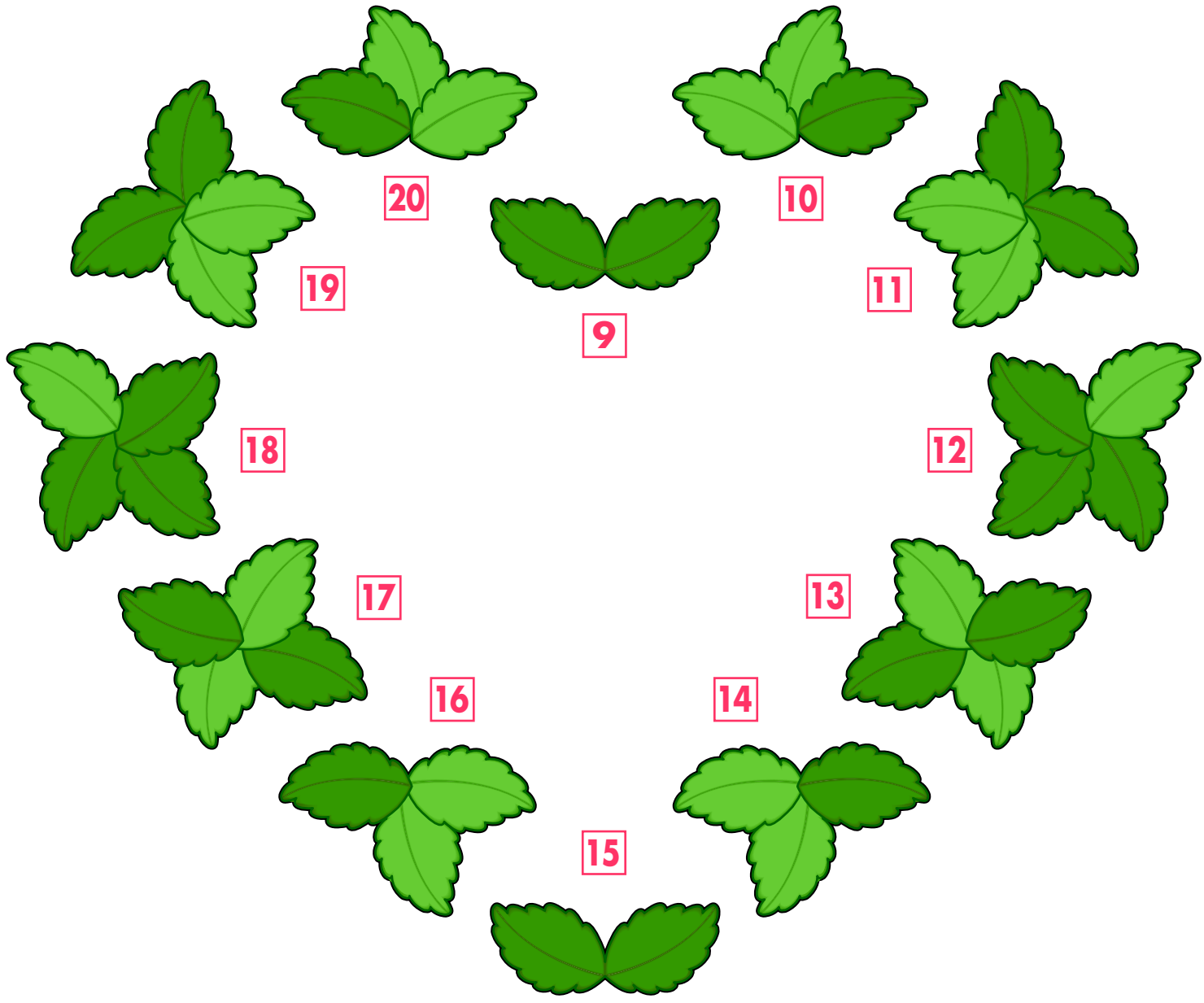
8



# Canon Gift box B (Red) : Parts

Canon® is a registered trademark of Canon Inc. © Canon Inc. © Yukiko Tanikoshi

## Parts





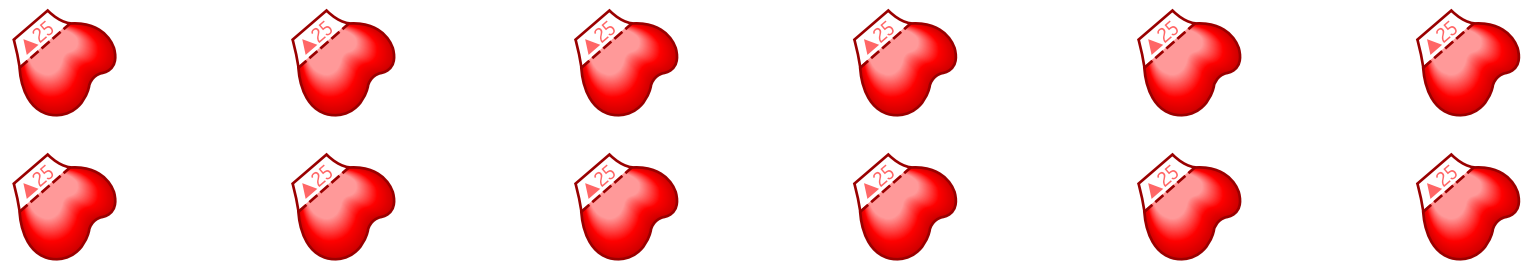


# Canon Gift box B (Red) : Parts

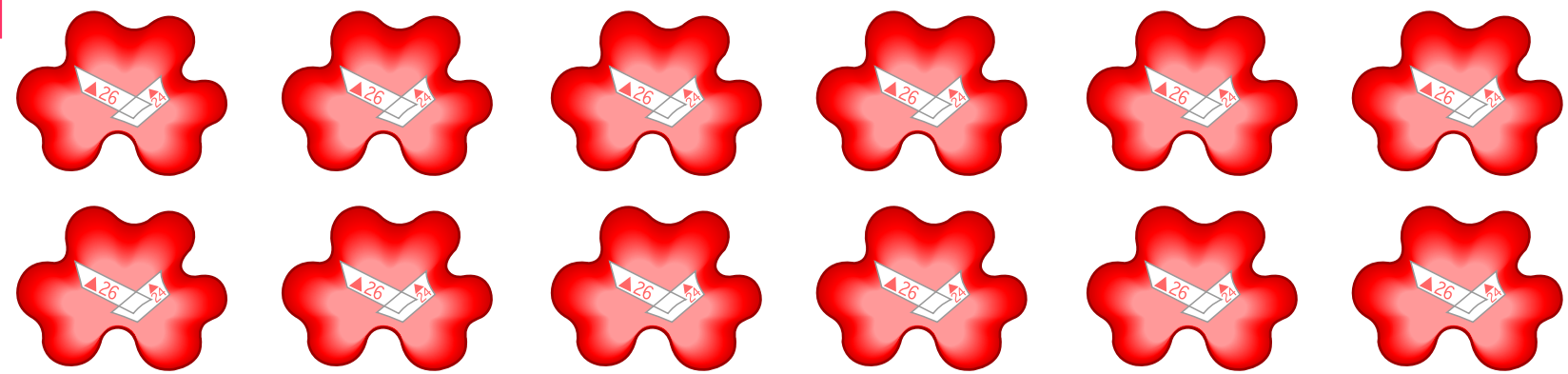
Canon ® is a registered trademark of Canon Inc. © Canon Inc. © Yukiko Tanikoshi

## Parts

24



25



26

