

Bouquet (tulips) : Assembly Instructions

© Canon Inc. © TakakoTakahashi



PAPER CRAFT

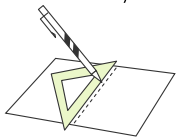
<http://www.canon.com/c-park/en/>



View of completed model

Assembly Instructions : Three US letter sheets (No. 1 to No. 3)

* Build the model by carefully reading the Assembly Instructions , in the parts sheet page order.



*Hint:Trace along the folds with a ruler and an exhausted pen (no ink) to get a sharper, easier fold.

Assembly Instructions

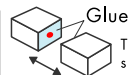


..... **Mountain fold (dotted line)**
Make a mountain fold.

..... **Valley fold (dashed and dotted line)**
Make a valley fold.

— **Scissors line (solid line)**
Cut along the line.

— **Cut in line (solid line)**
Cut along the line.



Glue
The glue spot (colored dot) shows where to apply the glue.

● **Glue spot (Red dot)**
Glue parts with the same number together.

● **Glue spot (Green dot)**
Glue within the same part.

● **Glue spot (Blue dot)**
Glue to the rear of the other part.

Tools and materials



Scissors, set square, glue (We recommend stick glue), pencil, used ballpoint pen, toothpicks, tweezers, (useful for handling small parts)

Assembly tip



Before gluing, create the paper along mountain fold and valley fold lines and make sure rounded sections are nice and stiff.

Caution

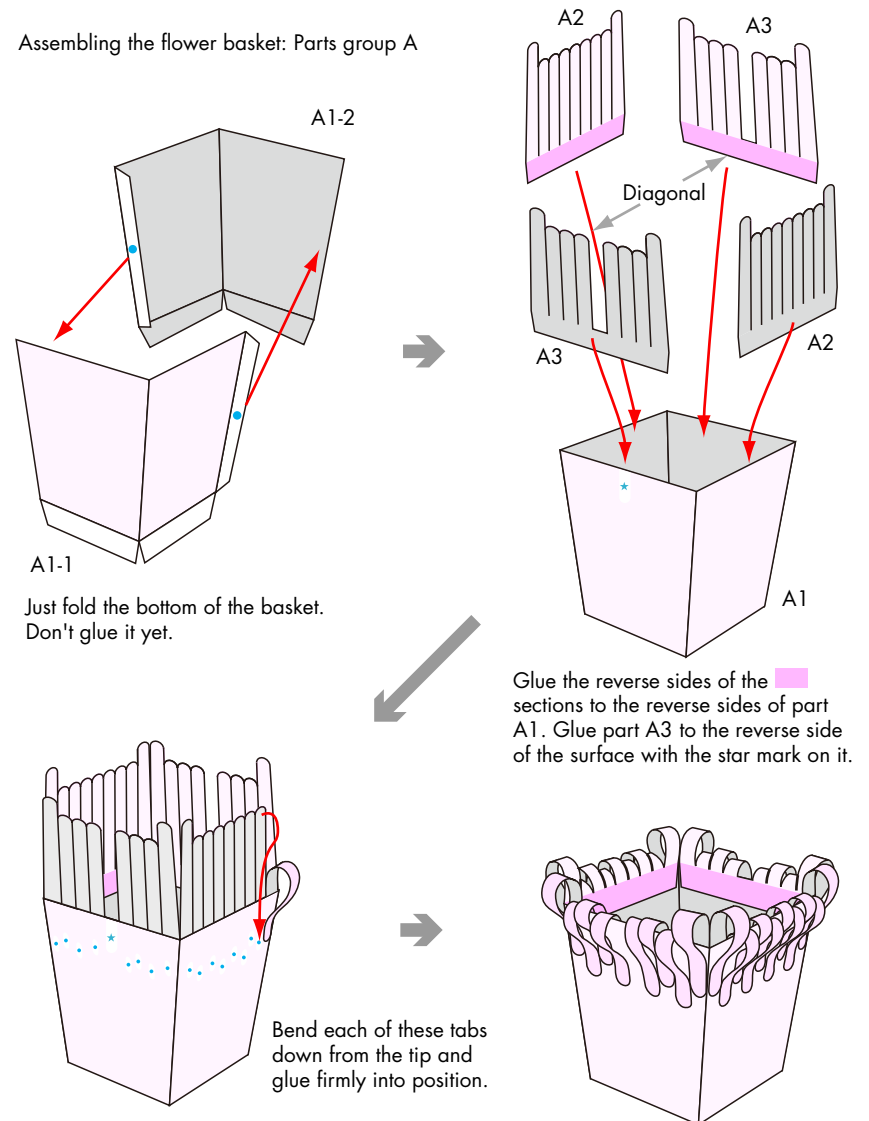


Glue, scissors and other tools may be dangerous to young children so be sure to keep them out of the reach of young children.

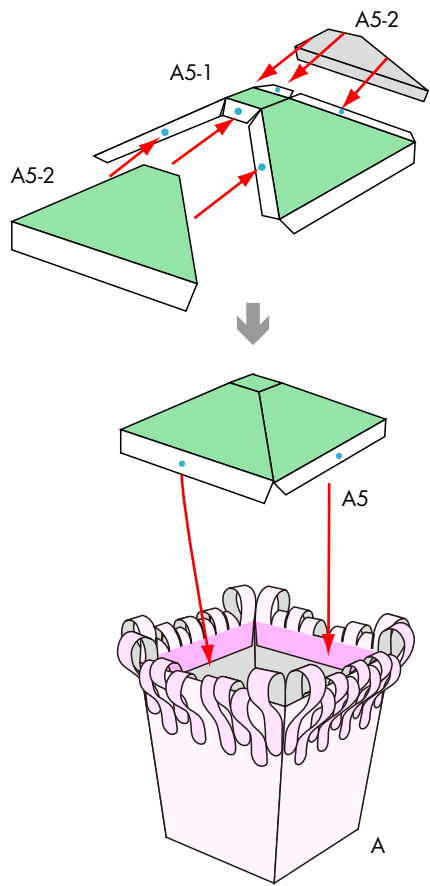
Before starting assembly:
Writing the number of each section on its back side before cutting out the sections is highly recommended.
(* This way, you can be sure which section is which even after cutting out the sections.)

→ Indicates where sections should be glued together.

Assembling the flower basket: Parts group A



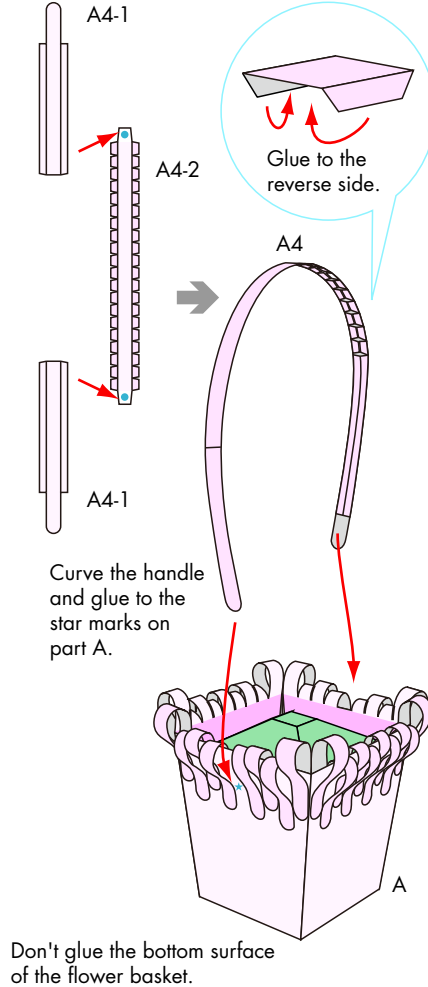
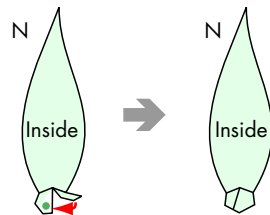
Bouquet (tulips) : Assembly Instructions



Glue the four glue-tab surfaces on part A5 to the reverse side of part A.

Assembling the leaves: Part N

Cut out the leaves as shown in steps 1 through 4 on the page at right to assemble the flower petals, then glue together the surfaces with the green dots, then glue together the surfaces with the green dots. The surfaces with stars on them will form the inner sides of the leaves.



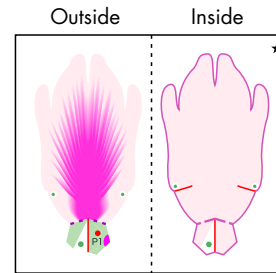
Curve the handle and glue to the star marks on part A.

Don't glue the bottom surface of the flower basket.

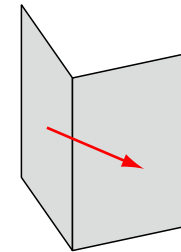
Assembling the tulips: Parts P, O, M, and Y

You should have a total of seven parts: one pink [P] part, two orange [O] parts, two magenta [M] parts, and two yellow [Y] parts. These parts differ only in color (denoted by color codes). Shapes and assembly methods are the same for all colors. We recommend using wood glue for these parts.

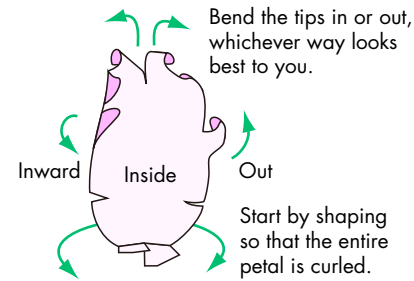
Assembling the flower petals: Parts 1 - 6



Step 1: Cut out along —. The surface with the star mark will form the inside of the petal.

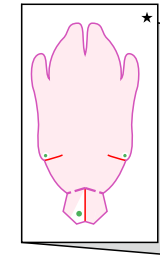


Step 3: Glue the reverse sides together.

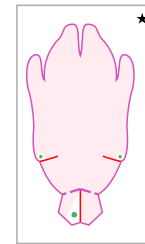


Step 5: Curl in the directions indicated by the arrows.

Step 2: Fold down along —.



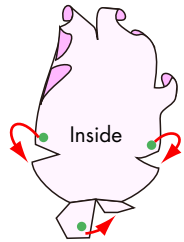
Step 4: With the surface with the star mark on top, cut out along —.



Tip:

After firmly gluing the two sides together in step 3, cut out the part while the glue is only partially dry and shape firmly to give it a curve. Be careful to avoid tearing the paper.

Bouquet (tulips) : Assembly Instructions



Tip:

Since the parts will take firm shape only if shaped while the glue is partially dry, assemble the petals one at a time.

Ex.:
Steps 1 - 6 for part 1
Steps 1 - 6 for part 2



Step 6: Complete the petal by gluing together areas marked with green dots as indicated.

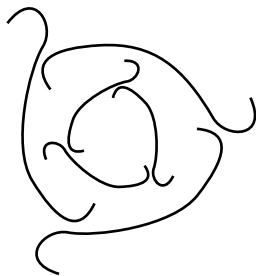
Part 7

Cut out part 7 according to same steps 1 - 4 you used to cut out the petals, then glue into position. The side with the star mark goes on the outside.



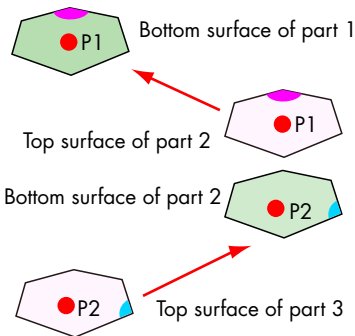
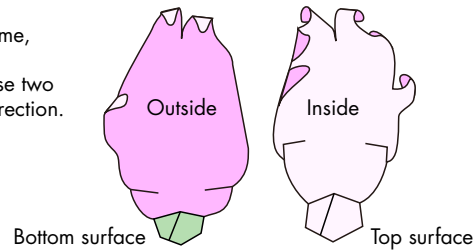
Assembling parts 1 - 7

Step 8: Glue these parts into position one at a time, starting with part 1. Make sure the hexagonal numbers with the red dot and the areas with these two symbols ( and ) all face in the same direction.



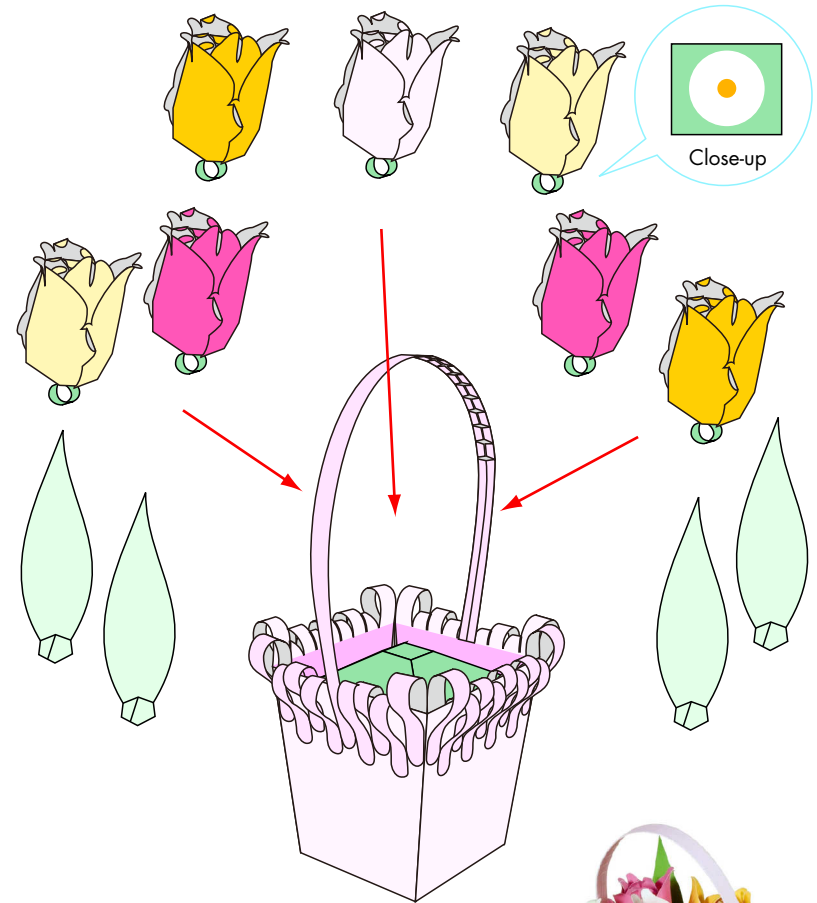
How to make the petals overlap: view from above

Complete a tulip by gluing part 7 into place in whatever direction you want.

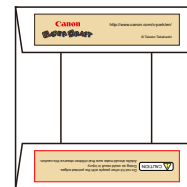


Displaying the tulips in the flower basket

Apply glue to the orange dots on the seven tulips and the leaves, then glue into the flower basket arranged in the way you want.



Bottom surface of flower basket



Glue the bottom surface of the flower basket to complete the bouquet of tulips.

