



View of completed model

## Bouquet (roses)

From time immemorial, people have given bouquets to express love, gratitude, and congratulations. This bright bouquet of yellow and orange roses has a simple, unpretentious beauty. Attach a card to this handmade bouquet to make a wonderful gift - or use it to decorate your home. (The bouquet is designed to hold the roses in a flower basket.)

---

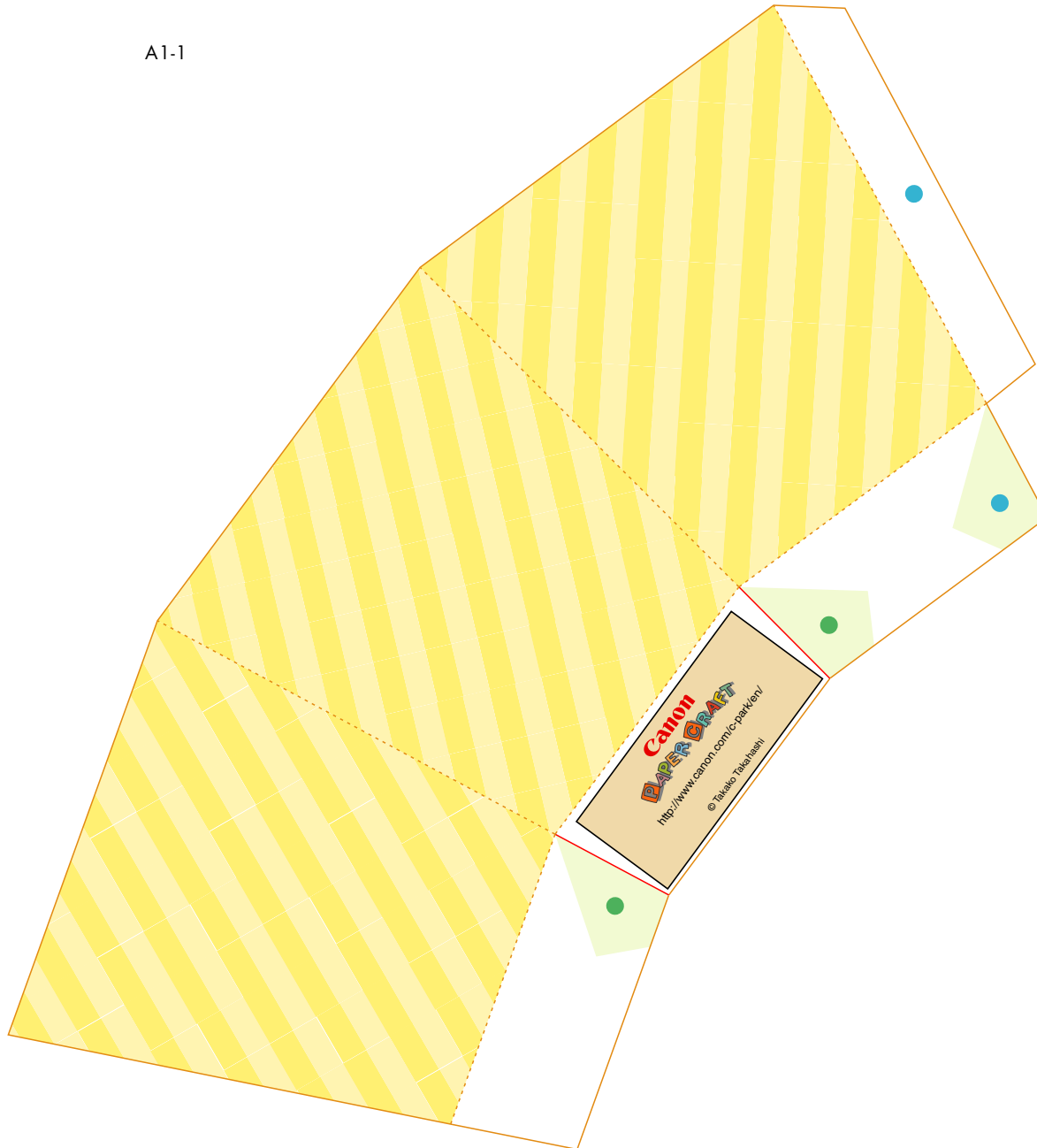
■ Parts list (pattern) : Twenty eight A4 sheets (No. 1 to No. 28)

■ No. of Parts : 89

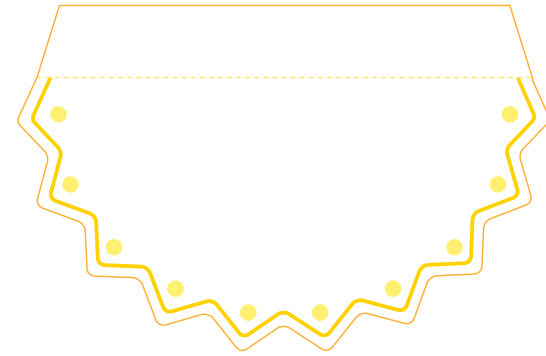
---

\* Build the model by carefully reading the Assembly Instructions , in the parts sheet page order.

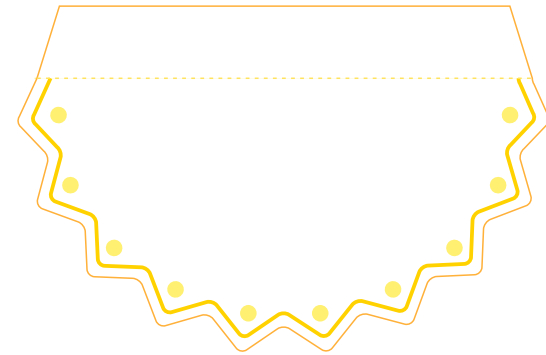
A1-1



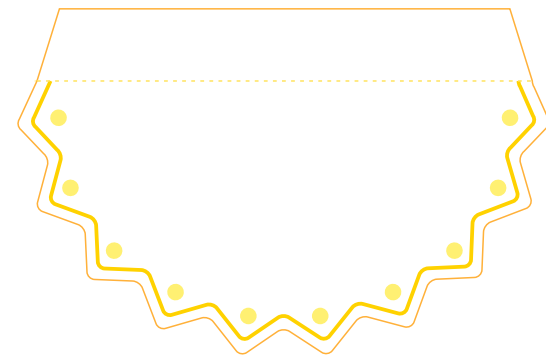
A2



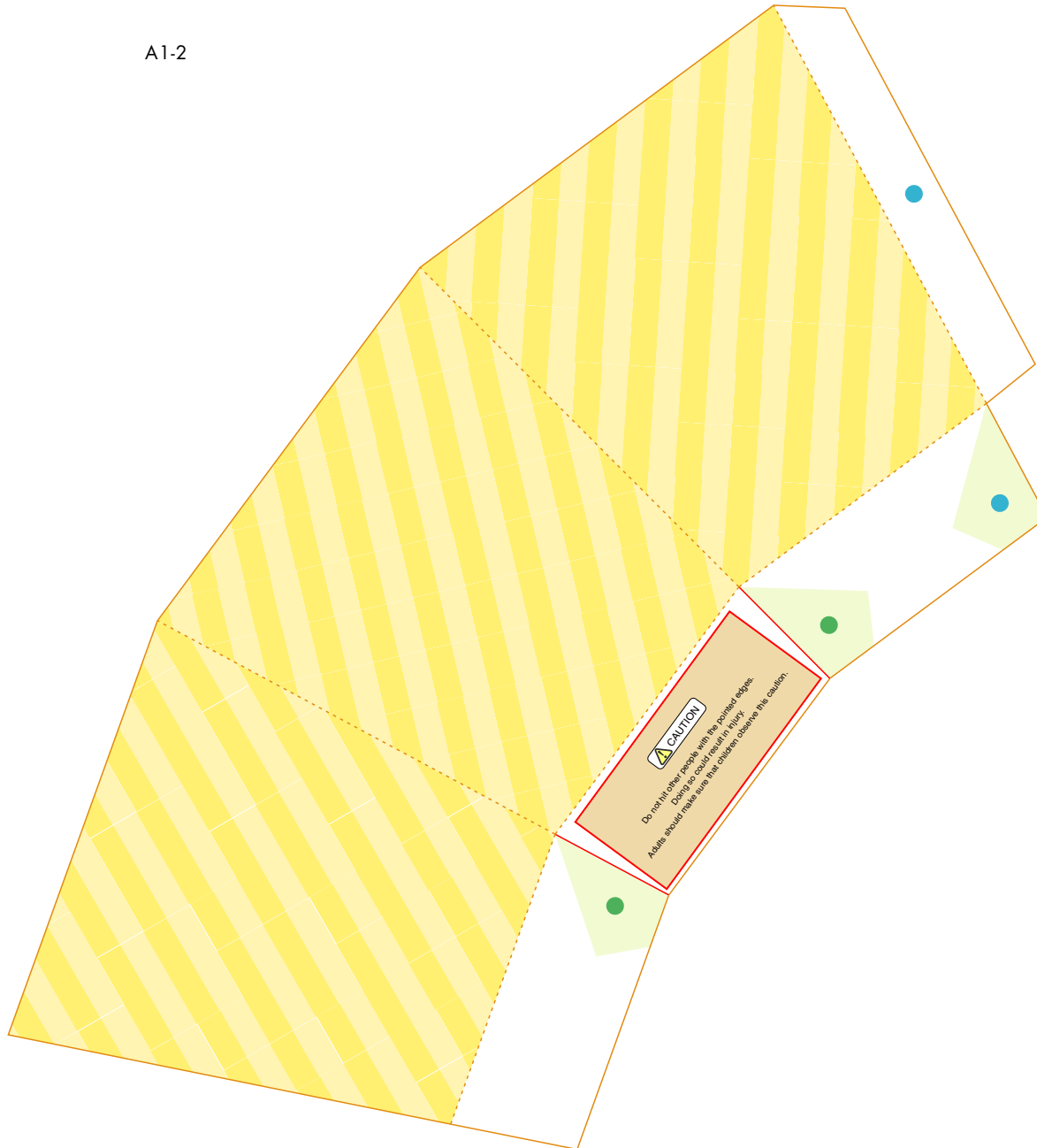
A2



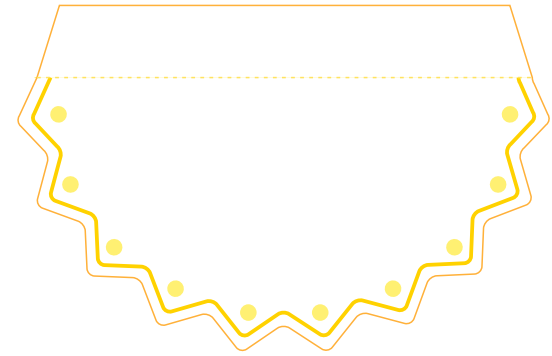
A2



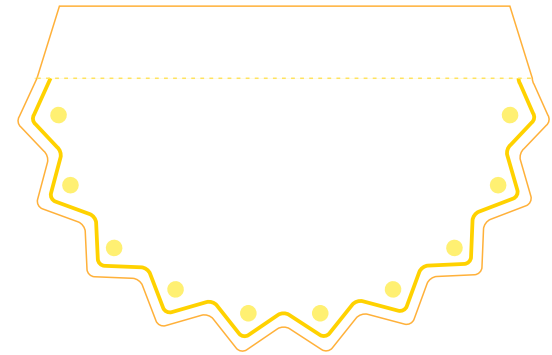
A1-2



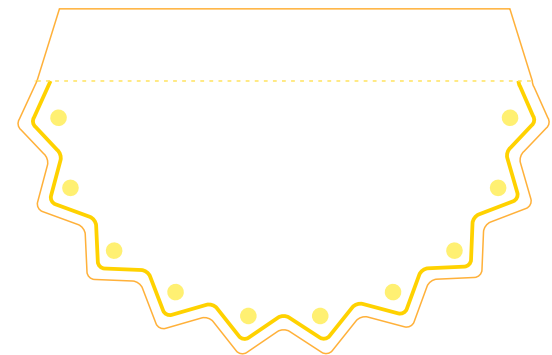
A2



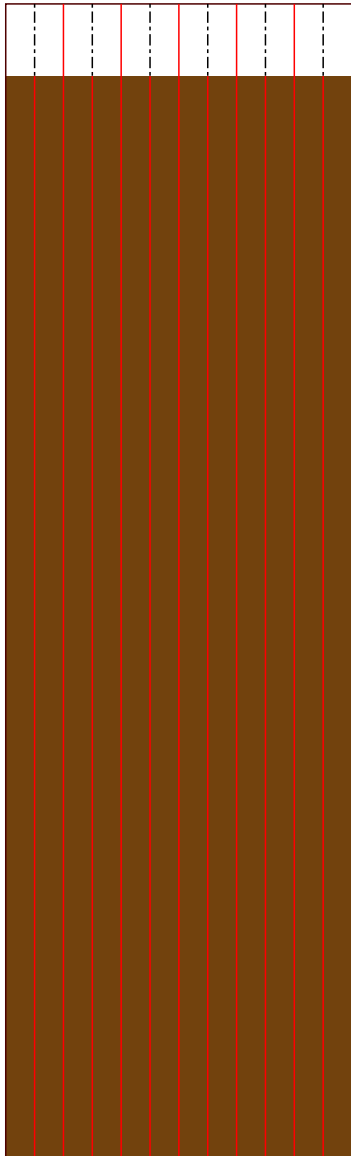
A2



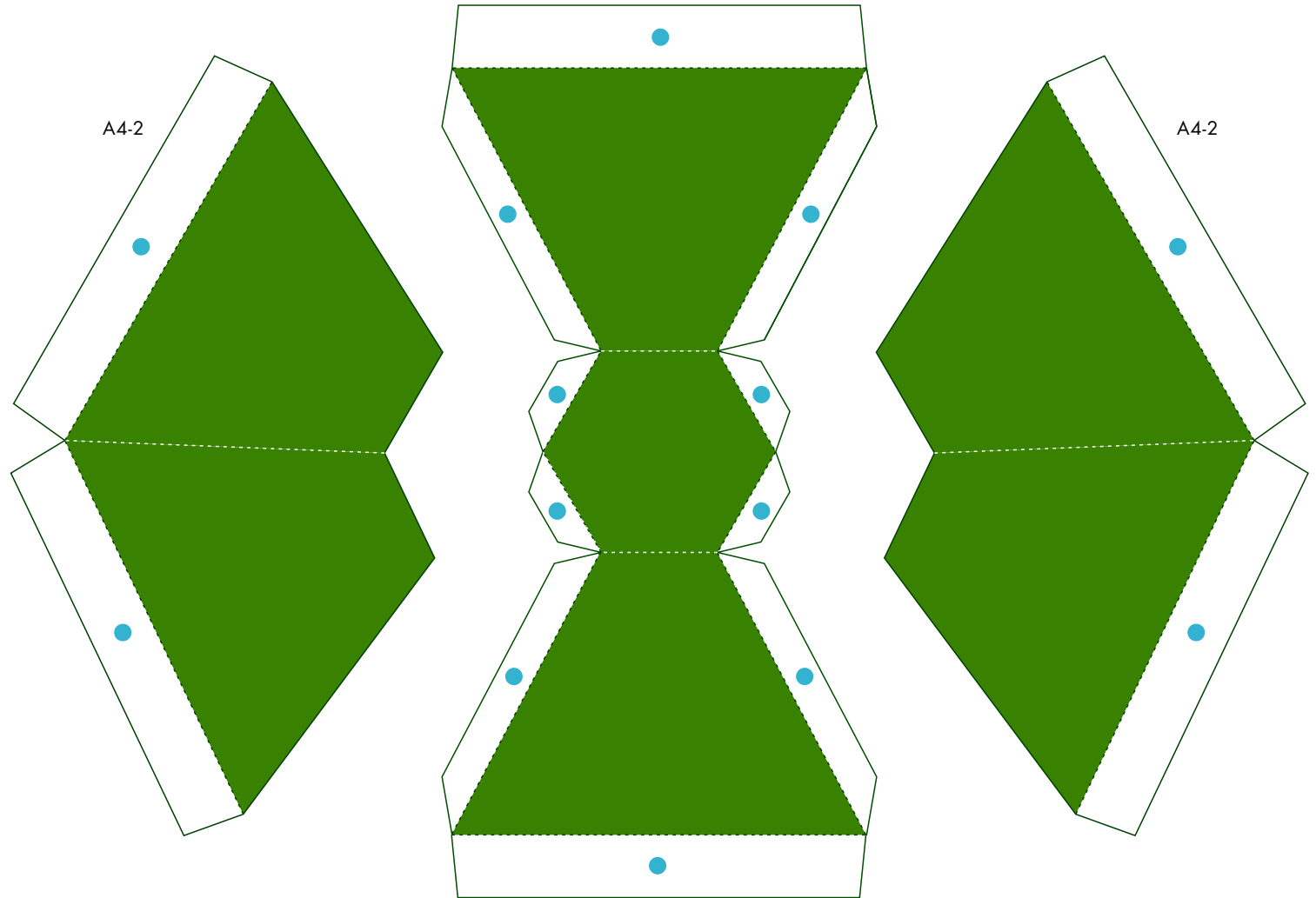
A2



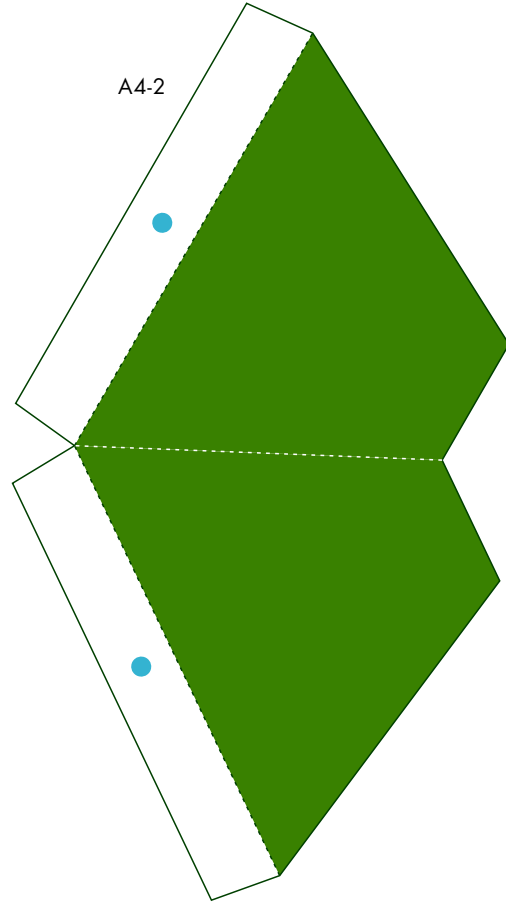
A3



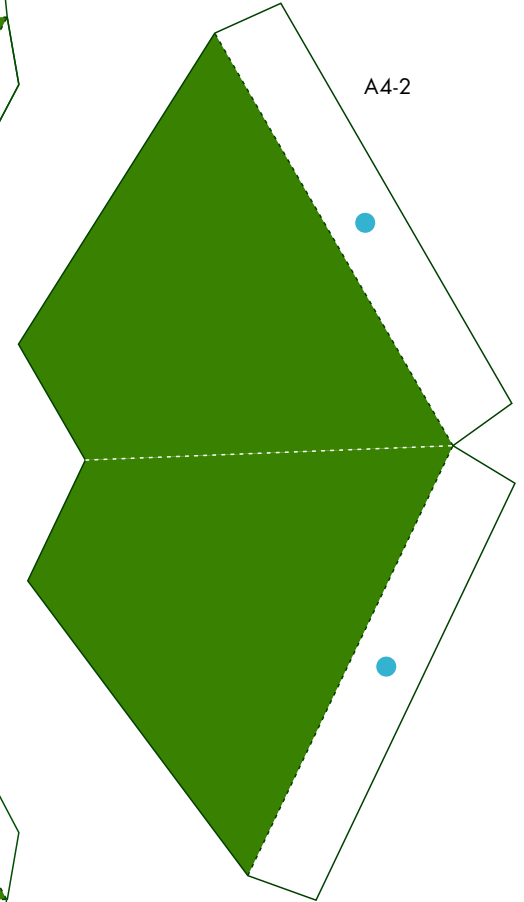
A4-1



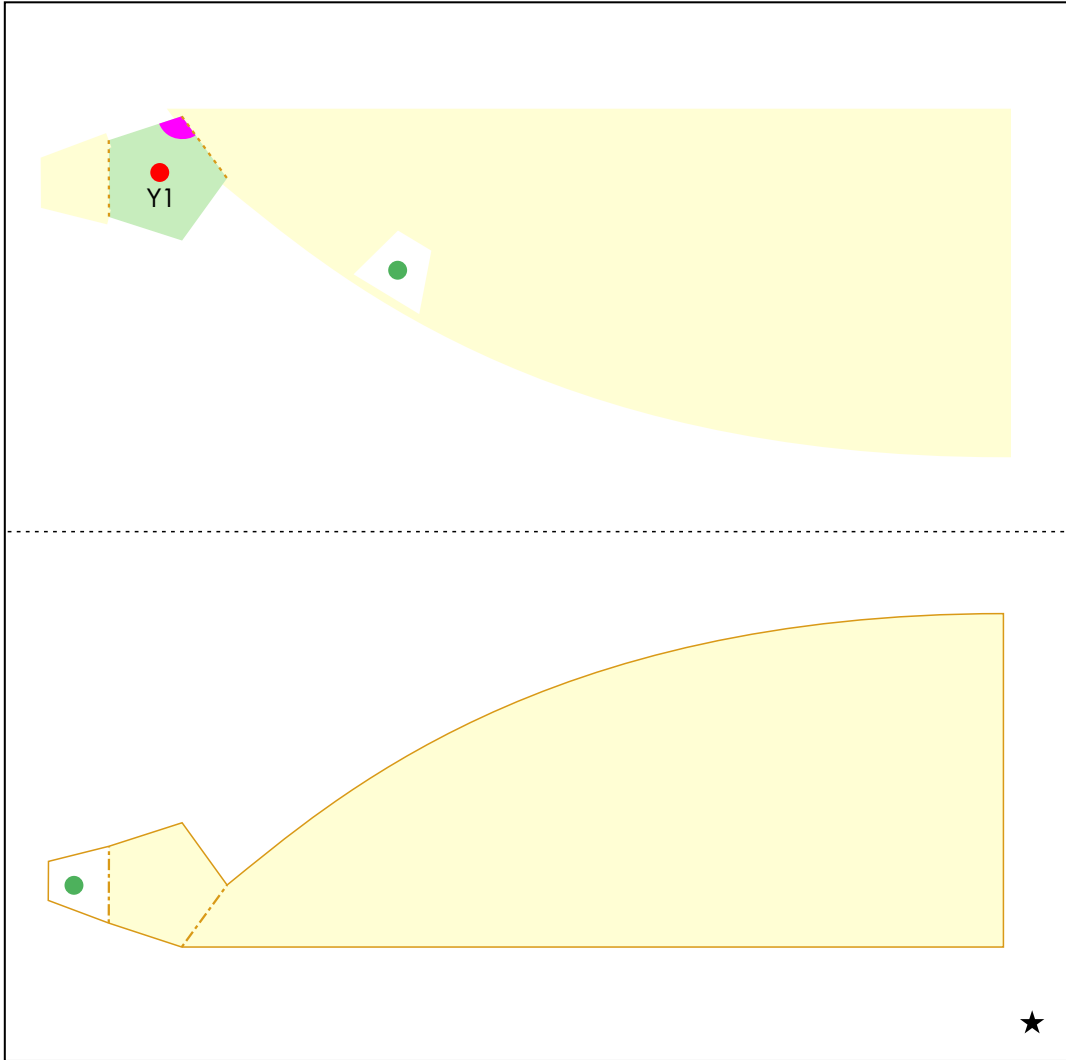
A4-2



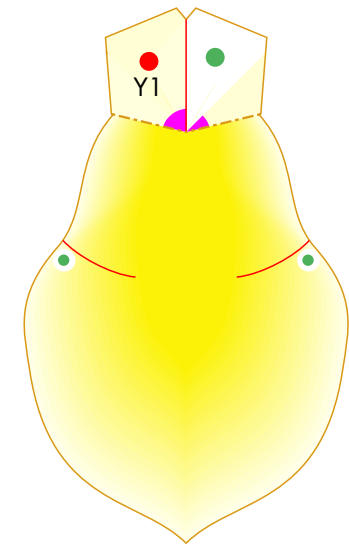
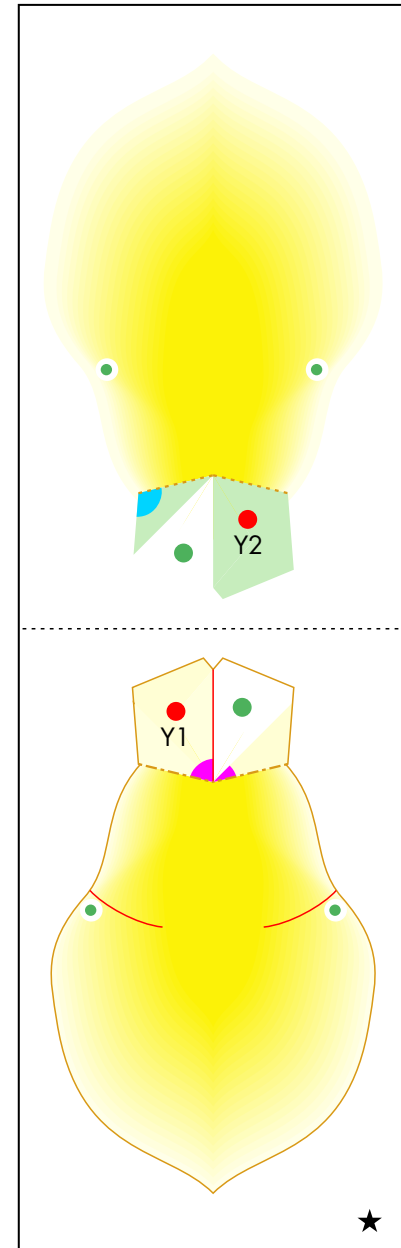
A4-2



Y1



Y2



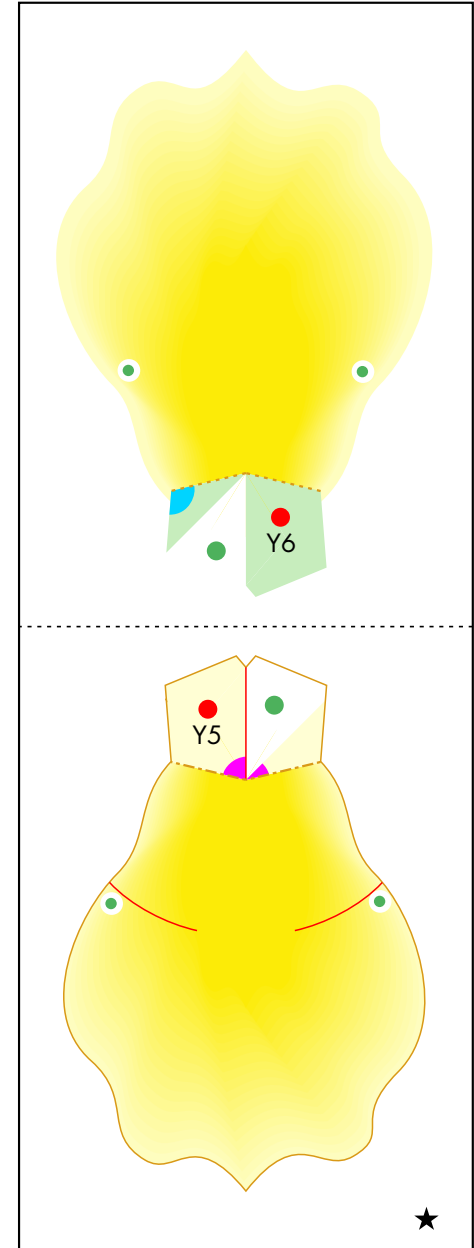
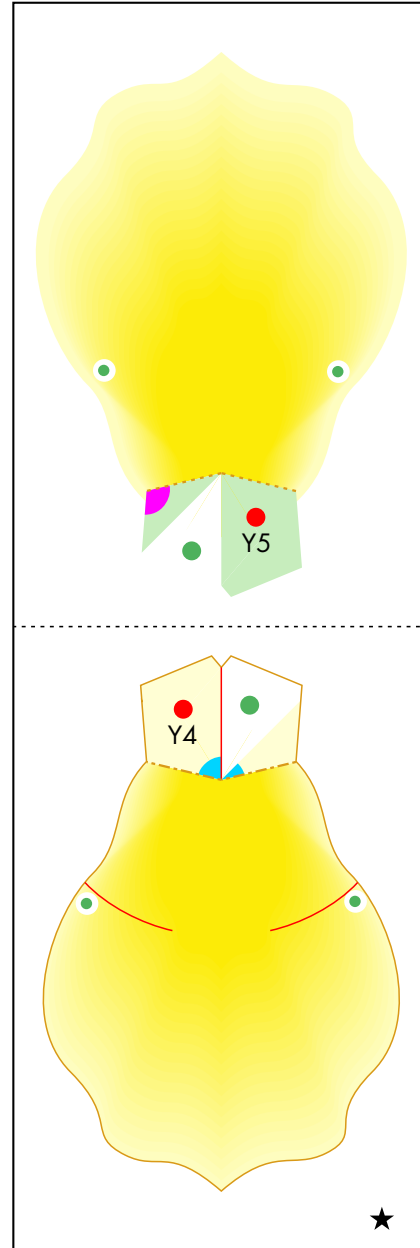
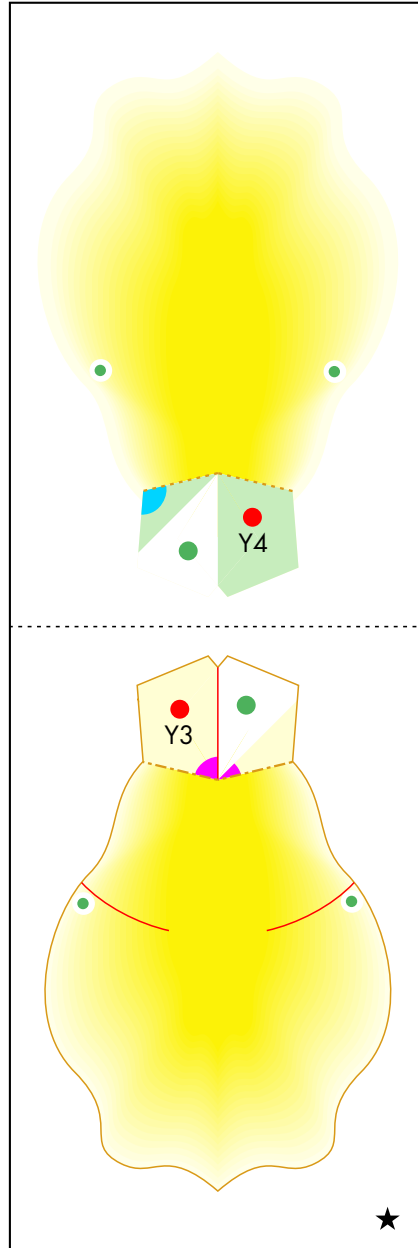
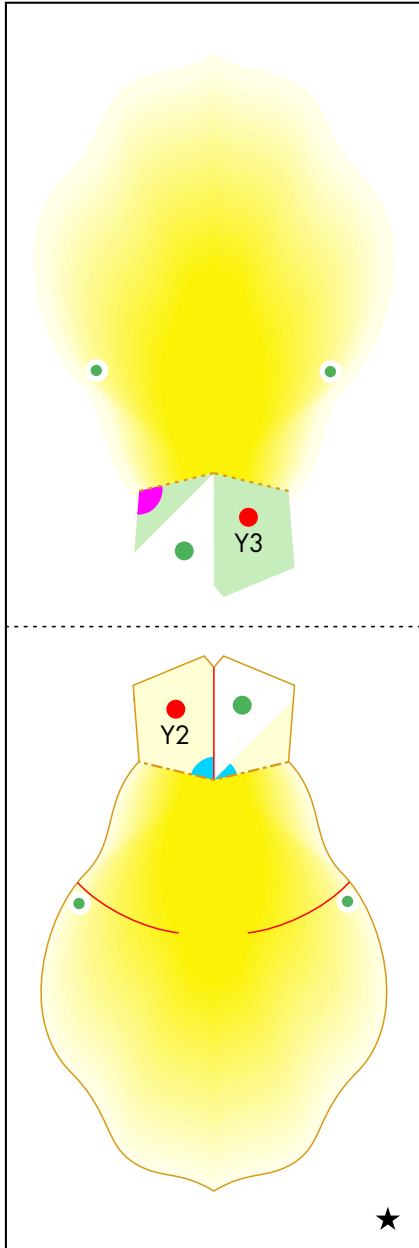
# Bouquet (roses) : Pattern

Y3

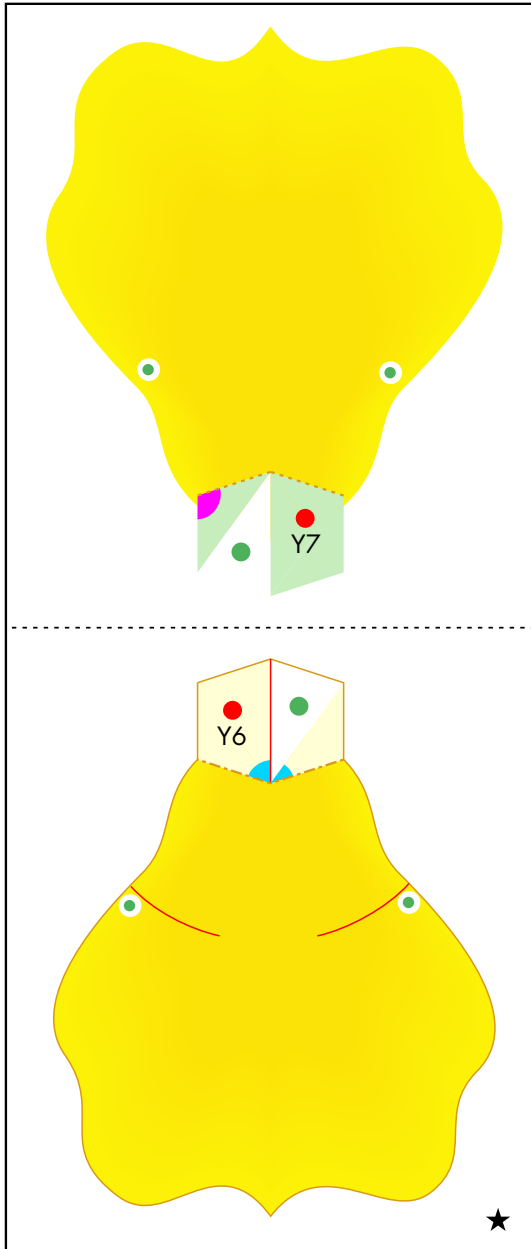
Y4

Y5

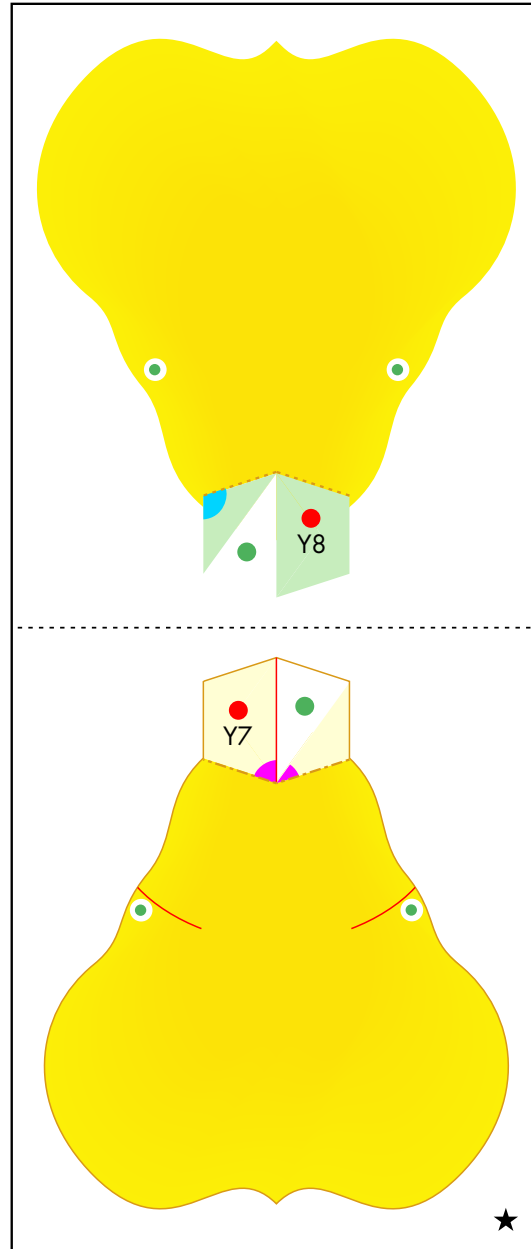
Y6



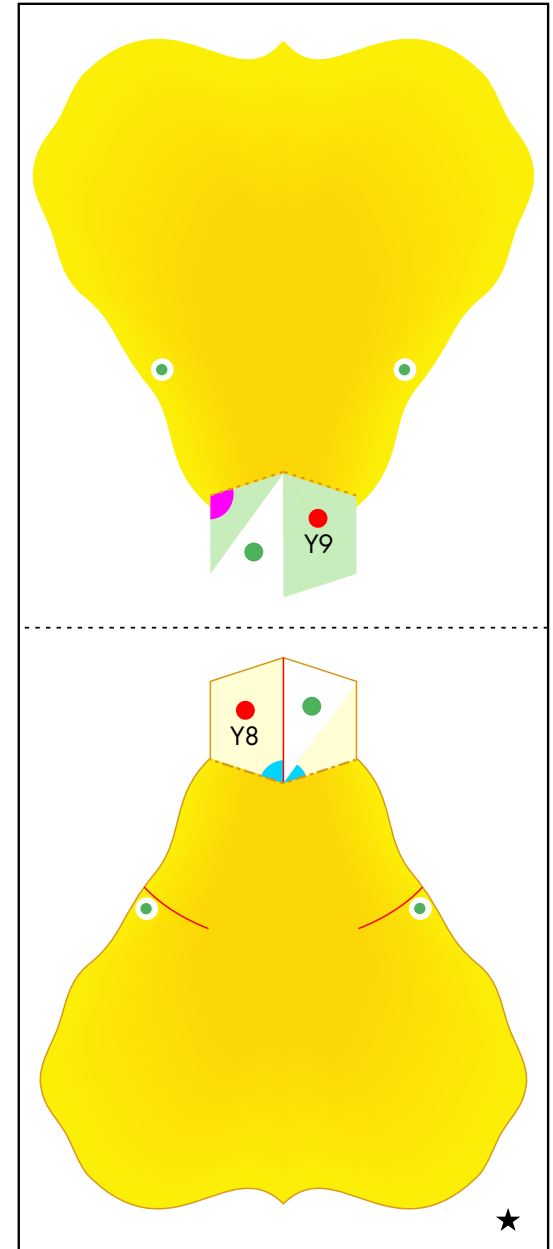
Y7



Y8

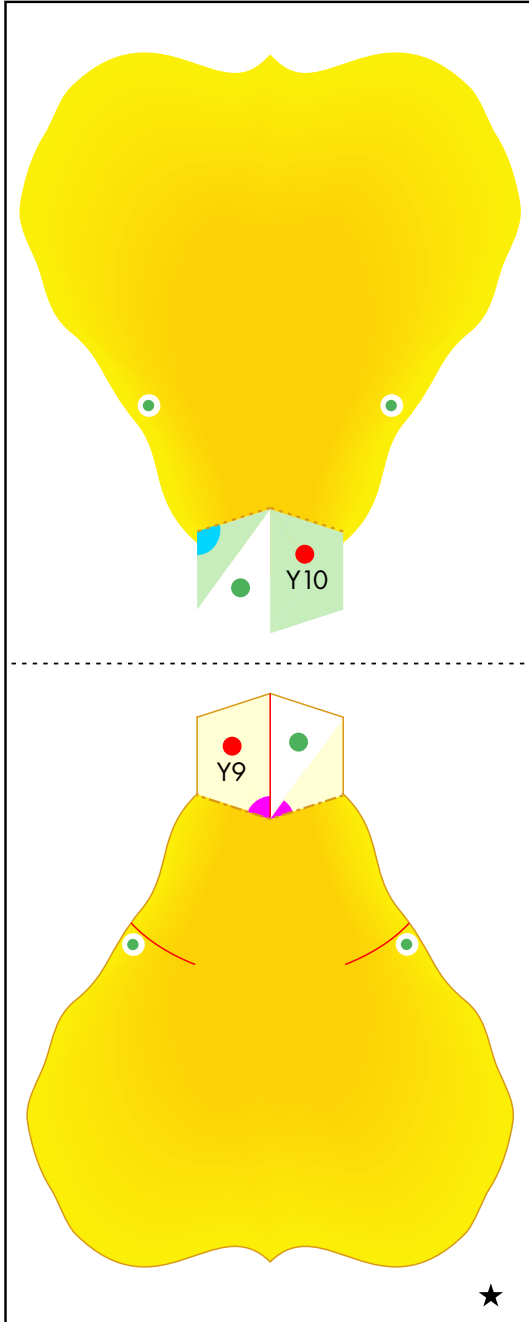


Y9

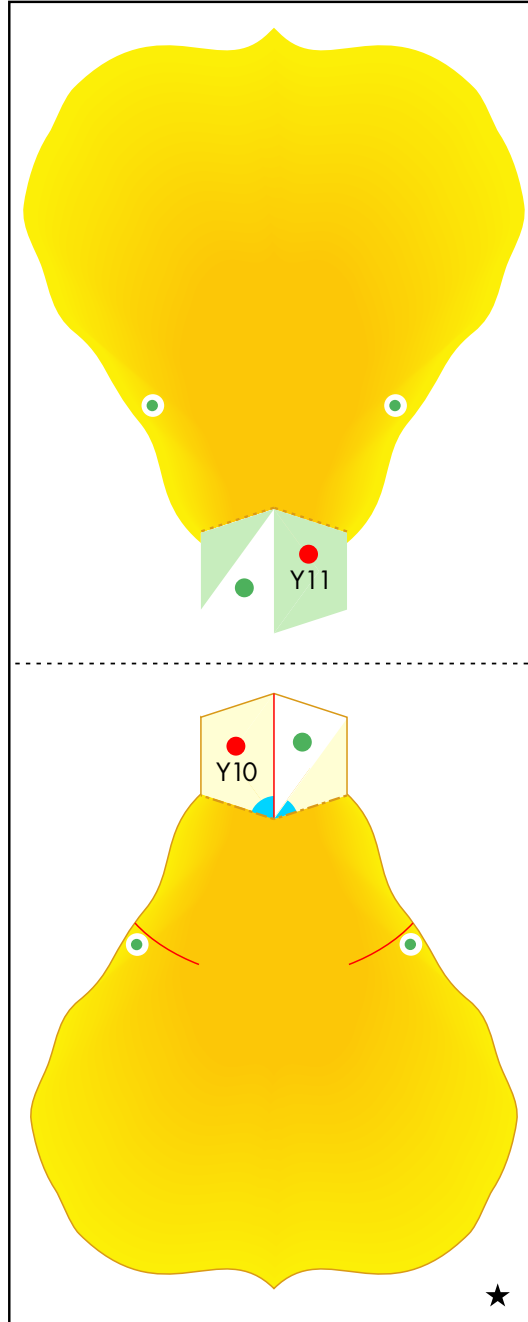


# Bouquet (roses) : Pattern

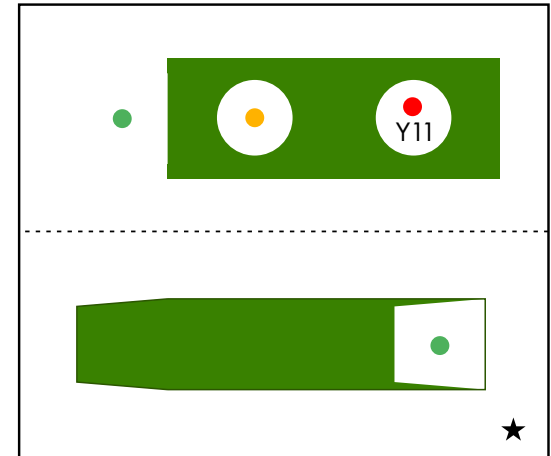
Y10



Y11

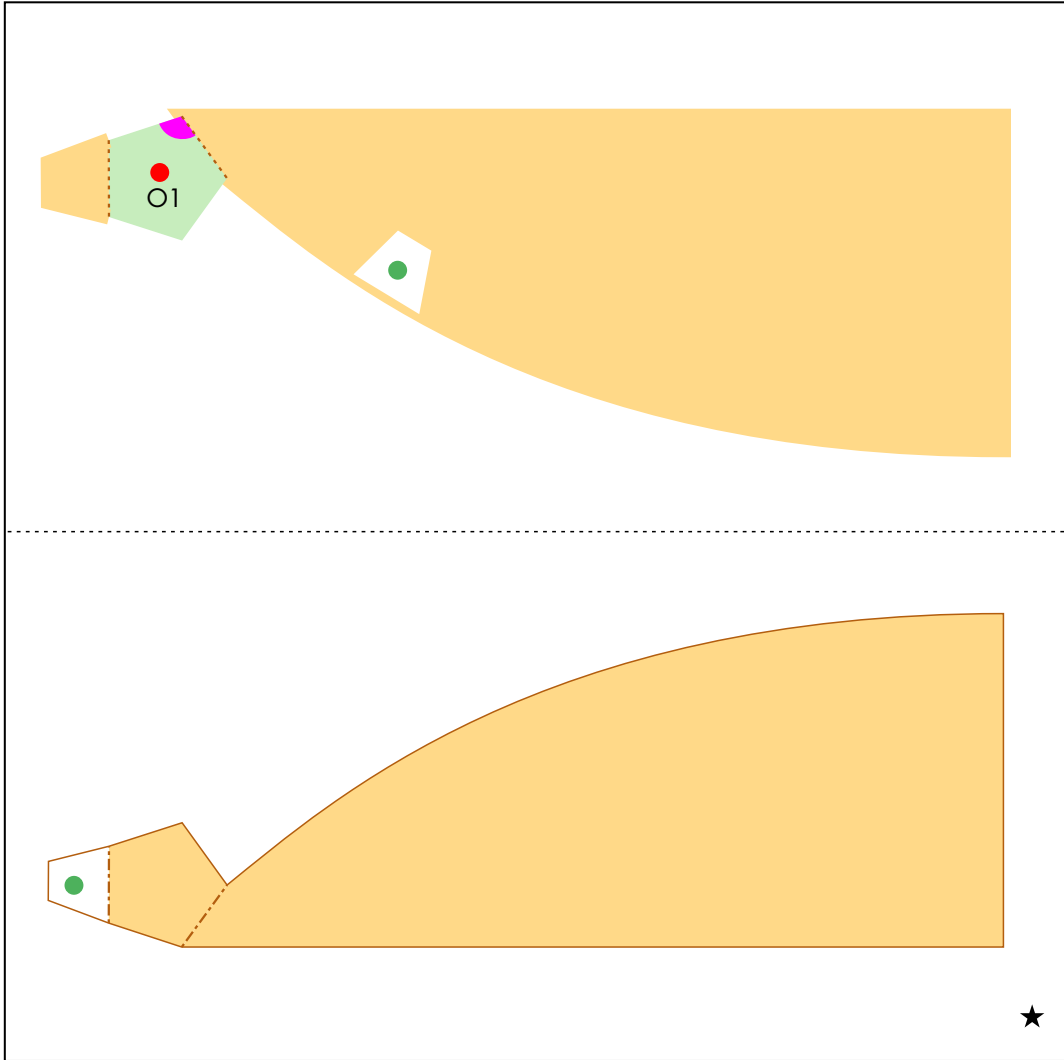


Y12

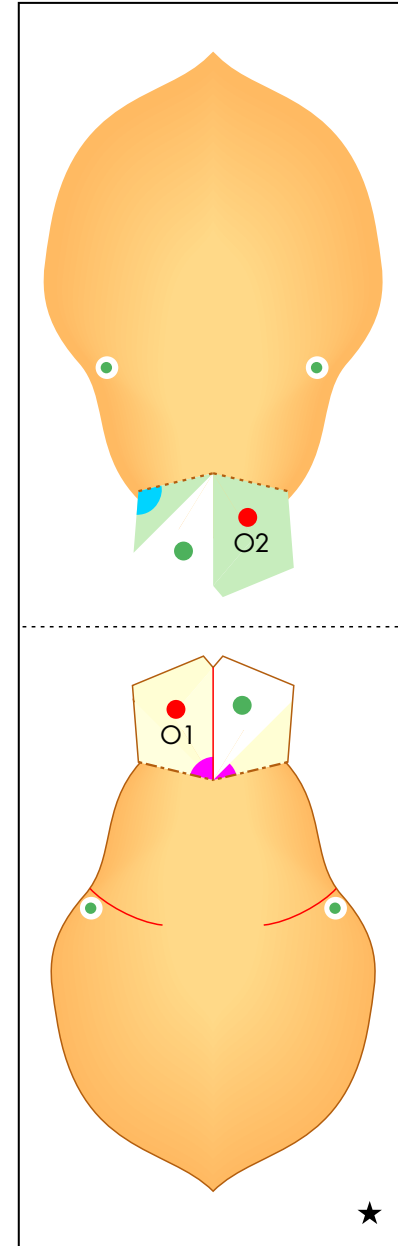




O1

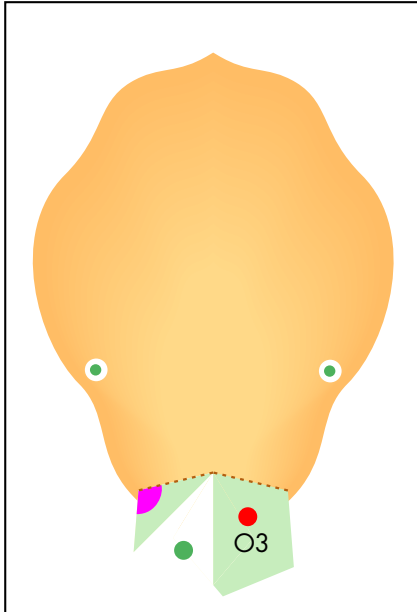


O2

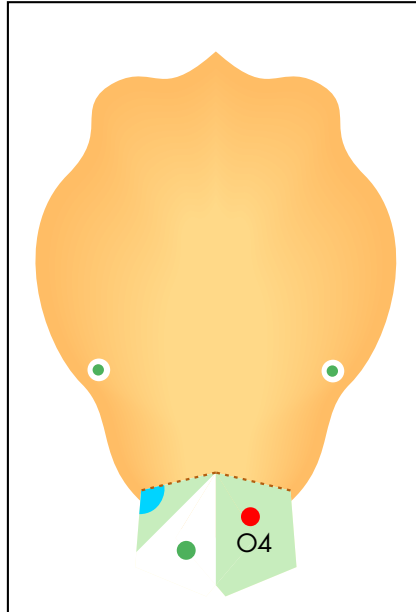


# Bouquet (roses) : Pattern

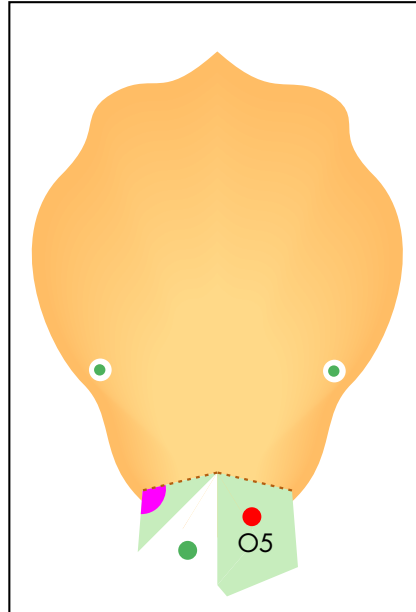
O3



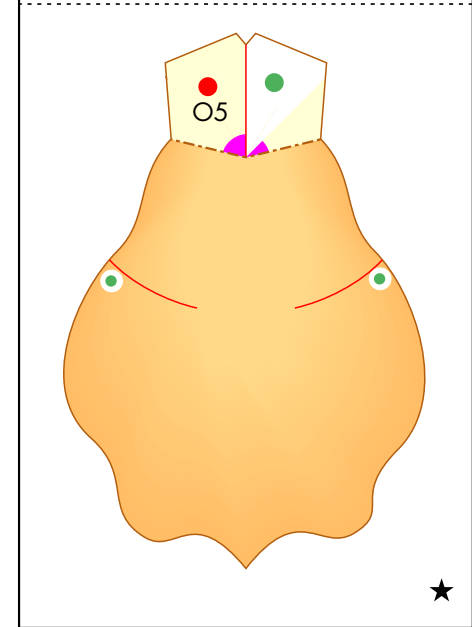
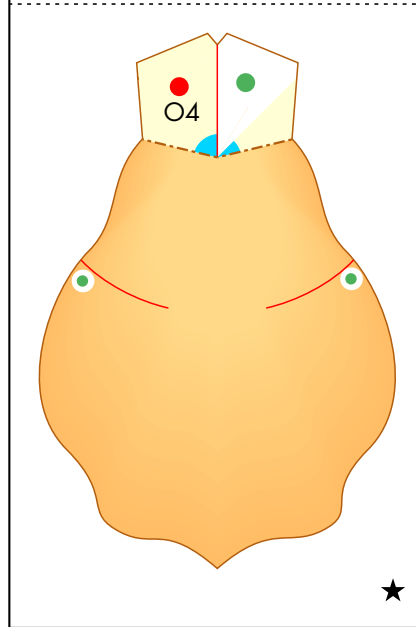
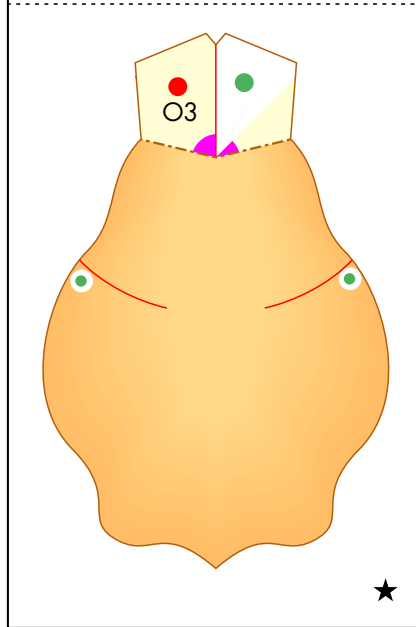
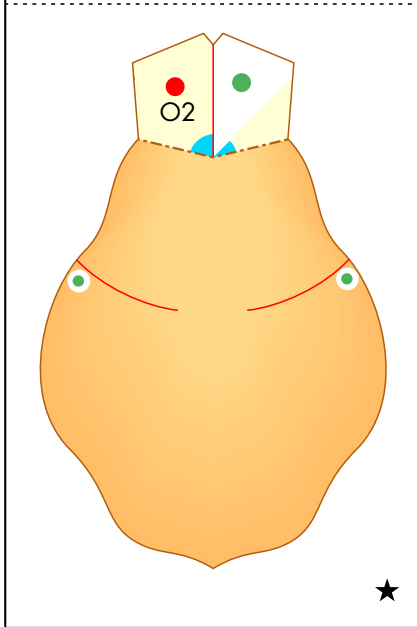
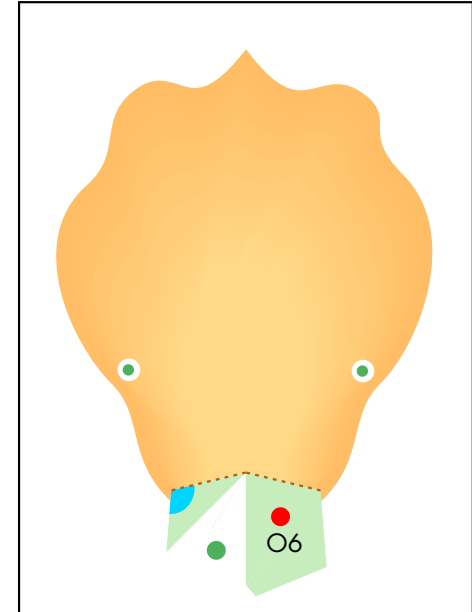
O4



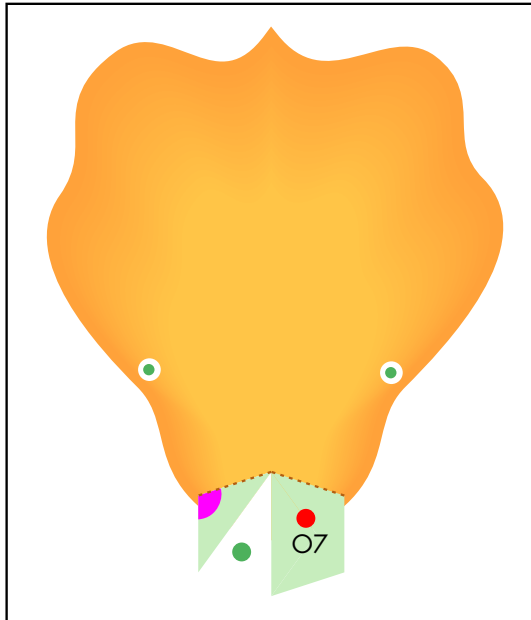
O5



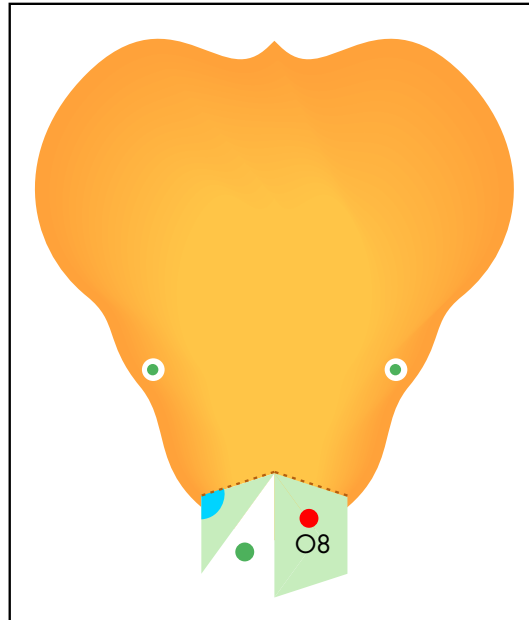
O6



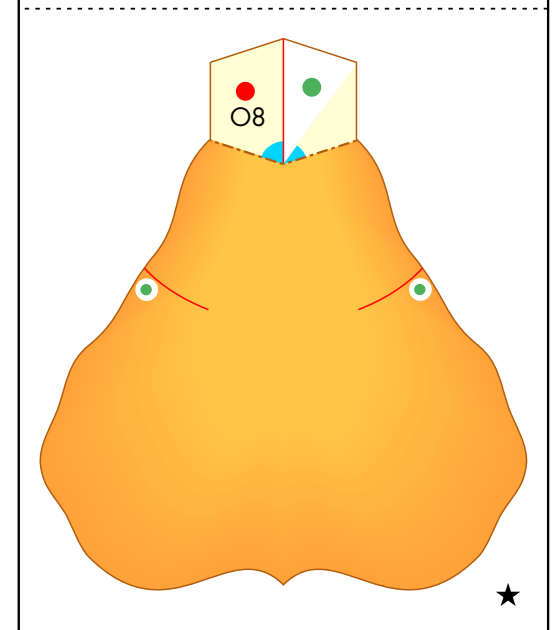
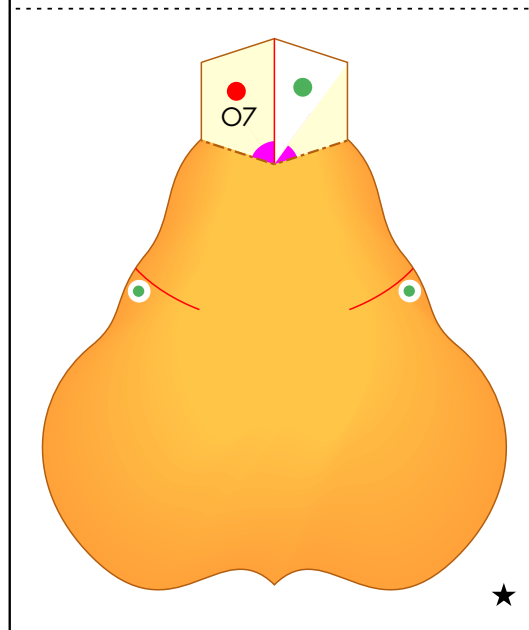
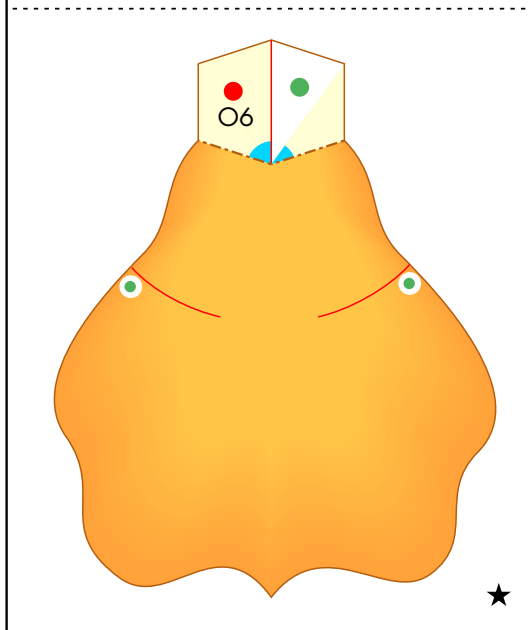
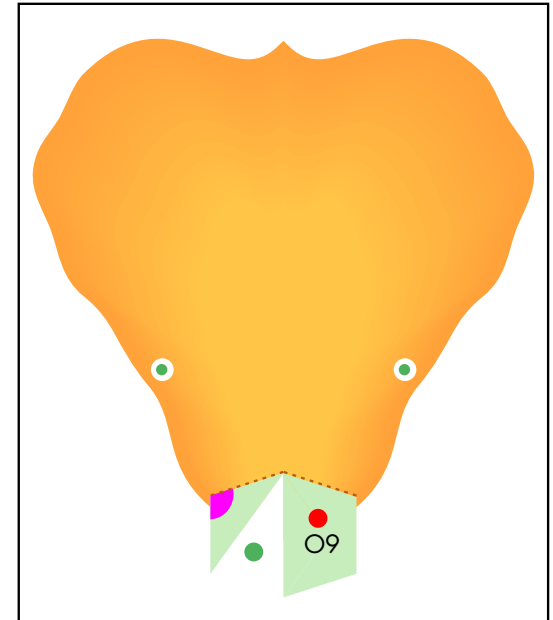
O7



O8

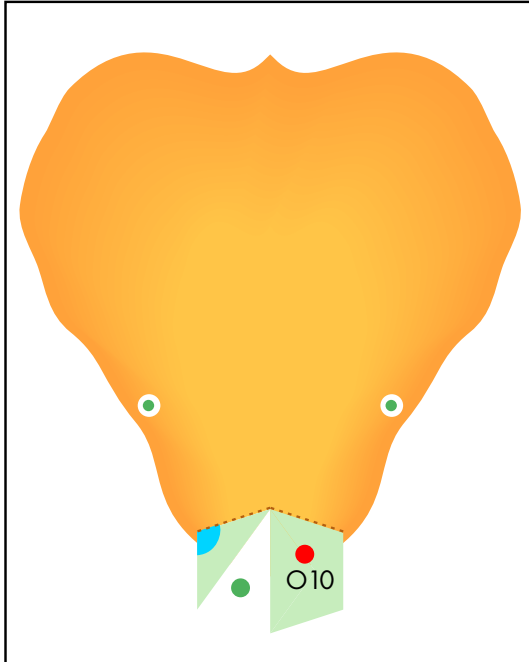


O9

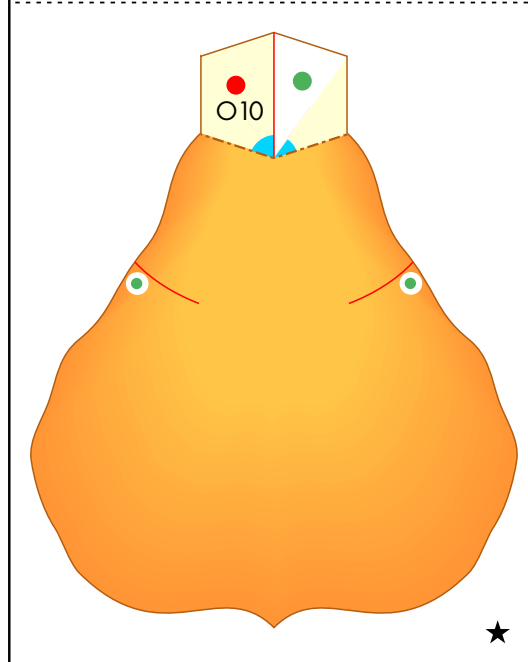
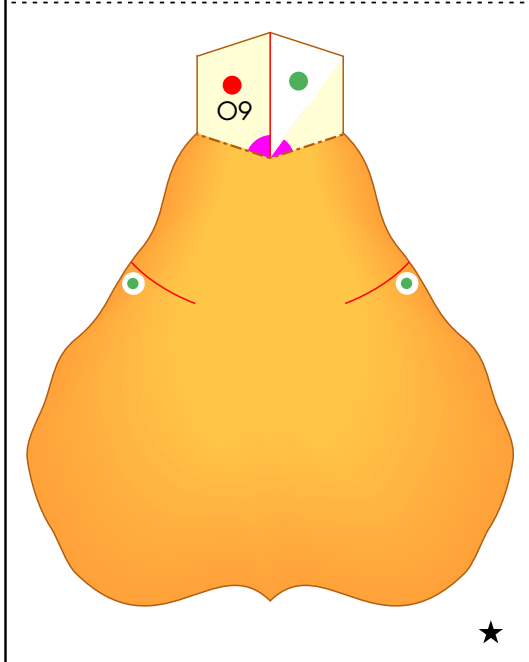
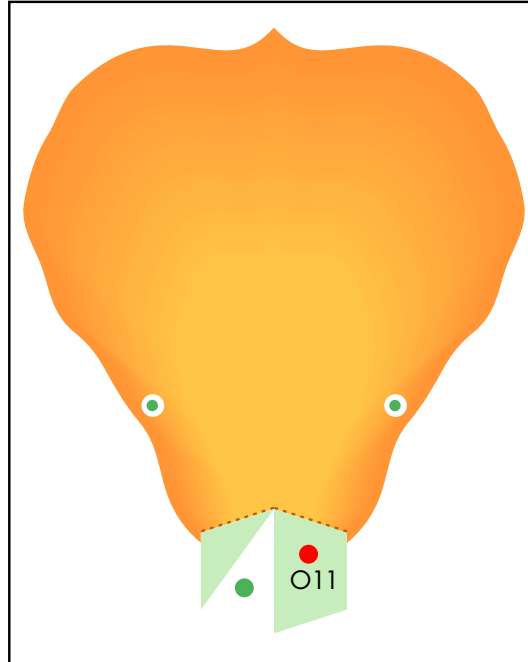


# Bouquet (roses) : Pattern

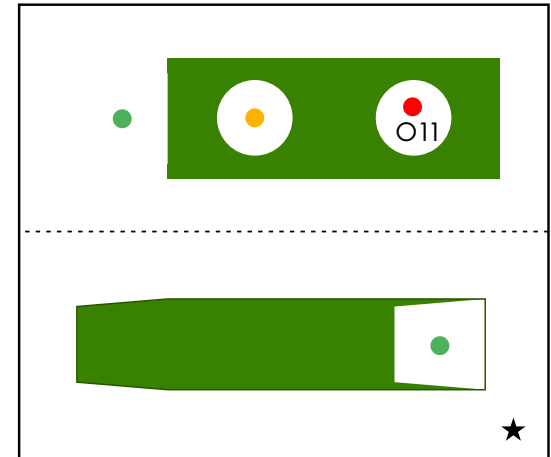
O10



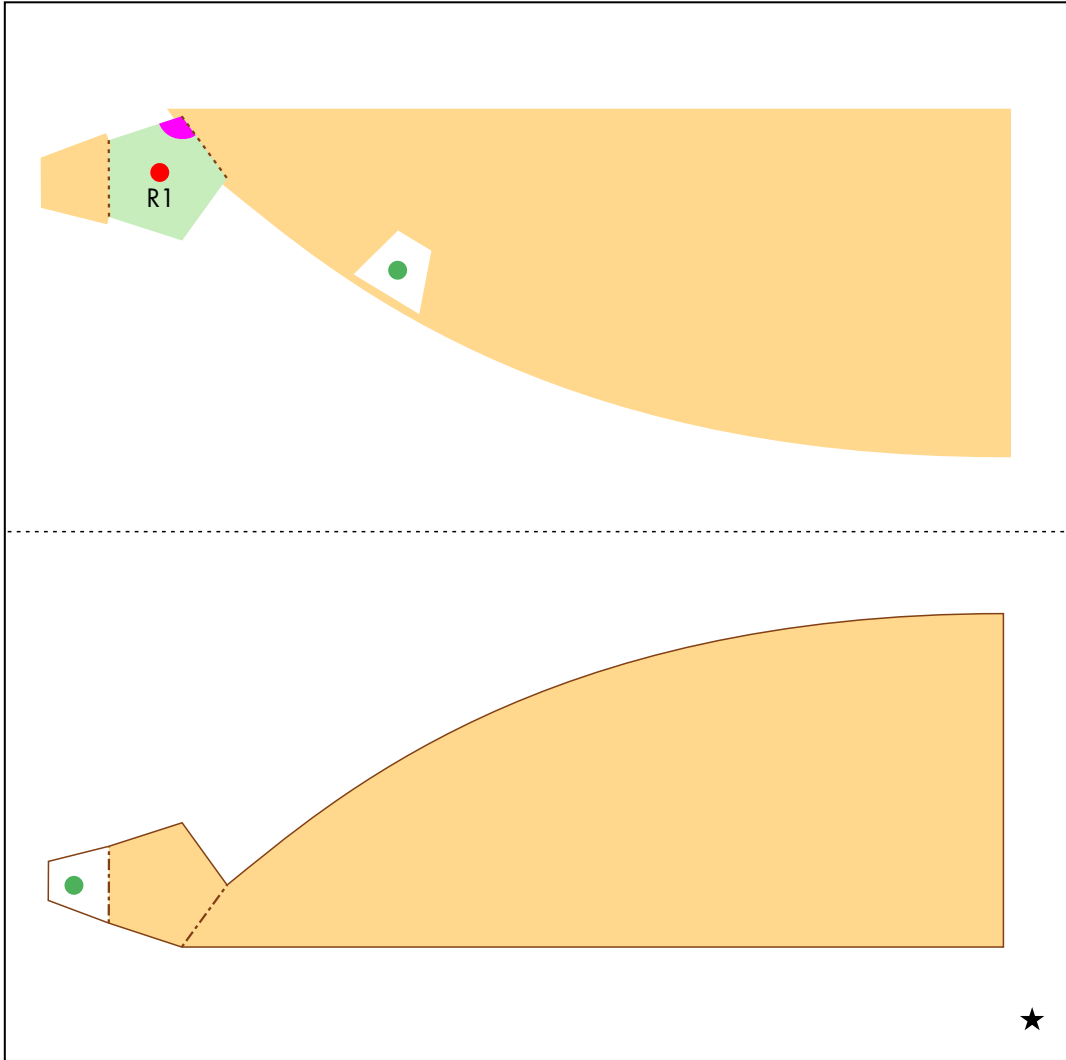
O11



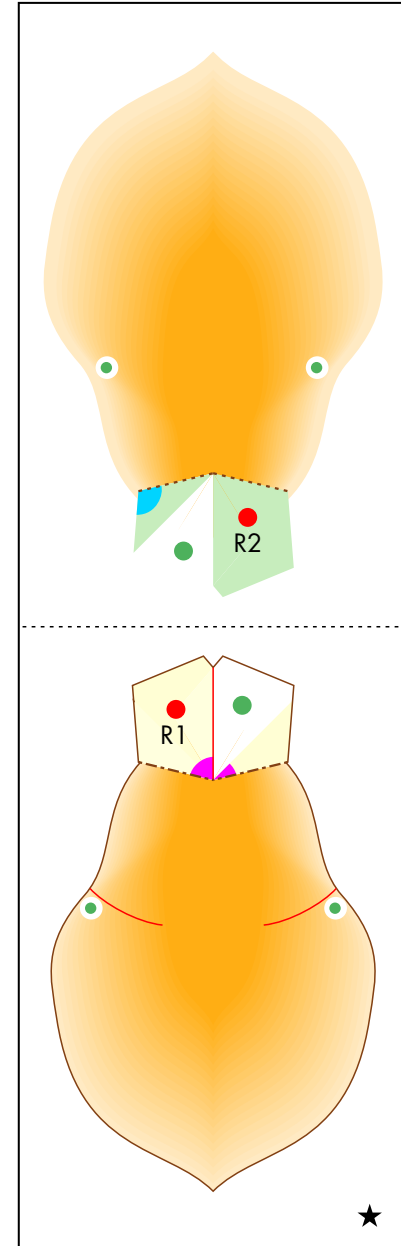
O12



R1

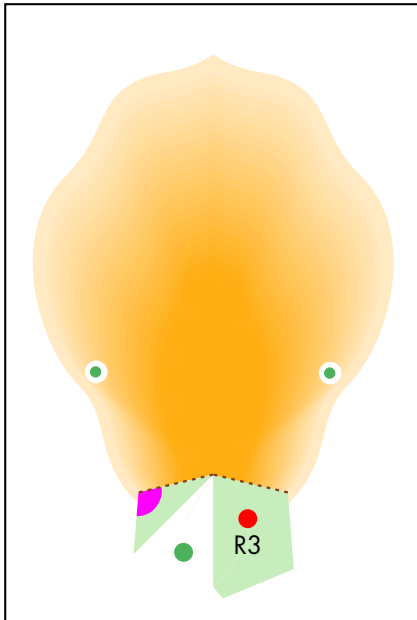


R2

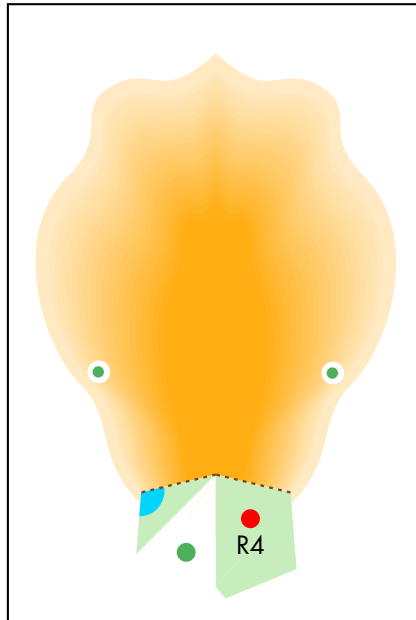


# Bouquet (roses) : Pattern

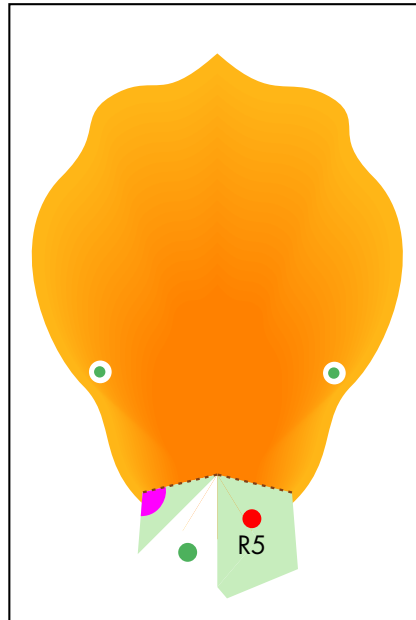
R3



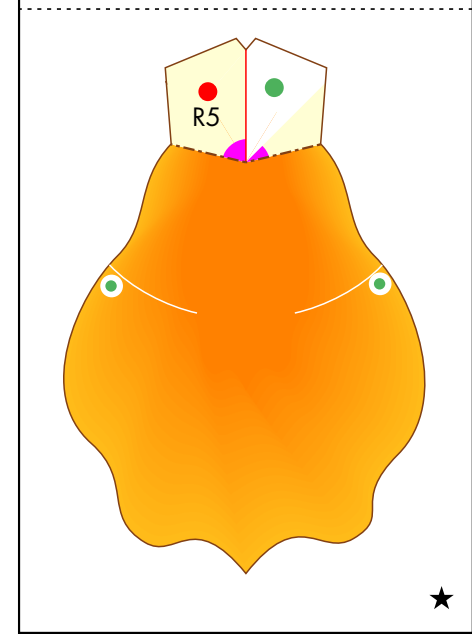
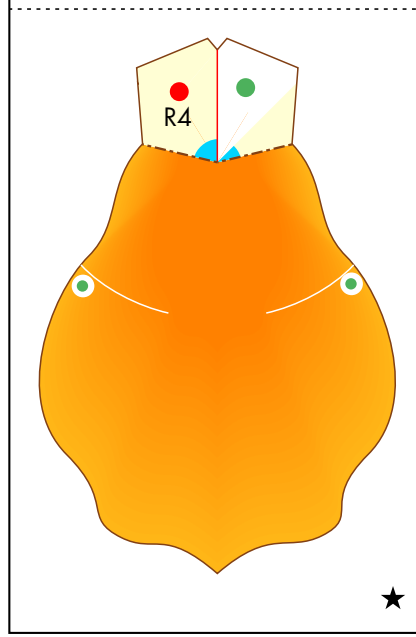
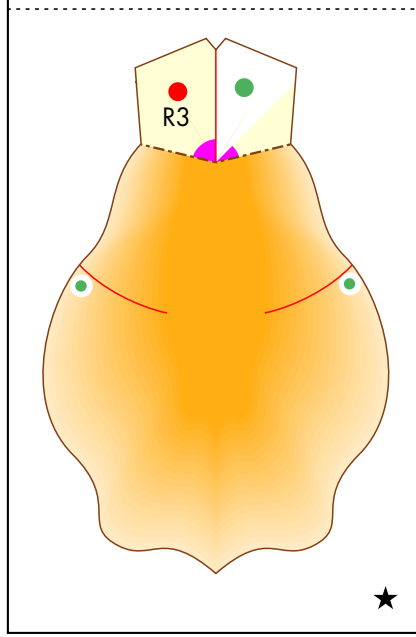
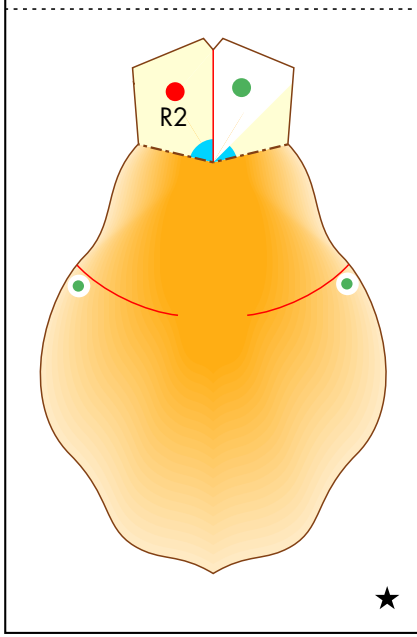
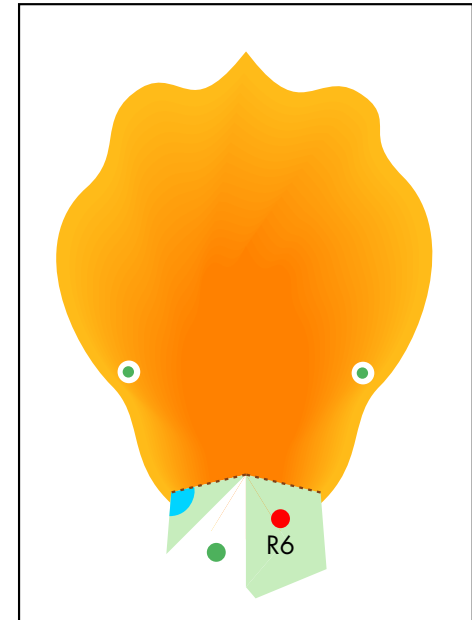
R4



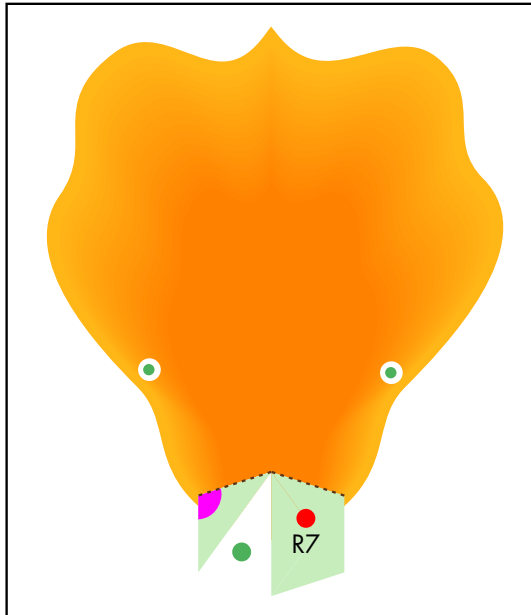
R5



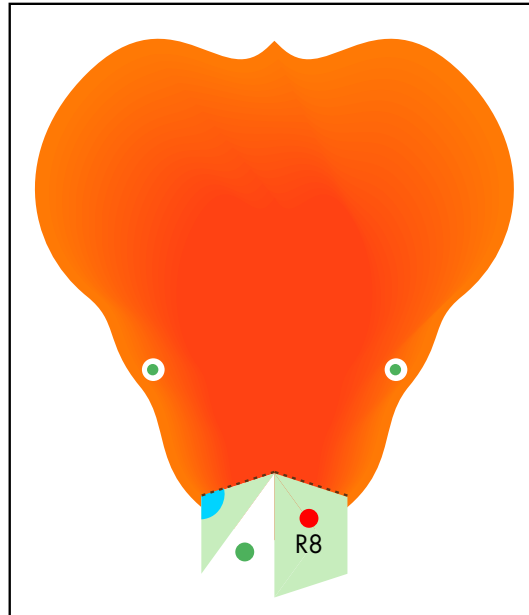
R6



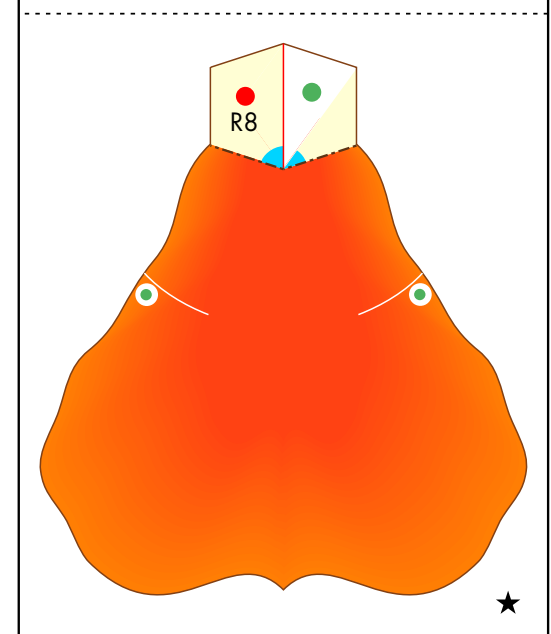
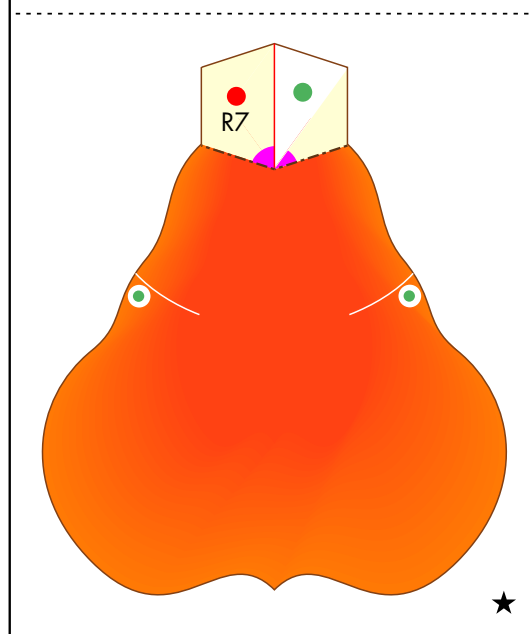
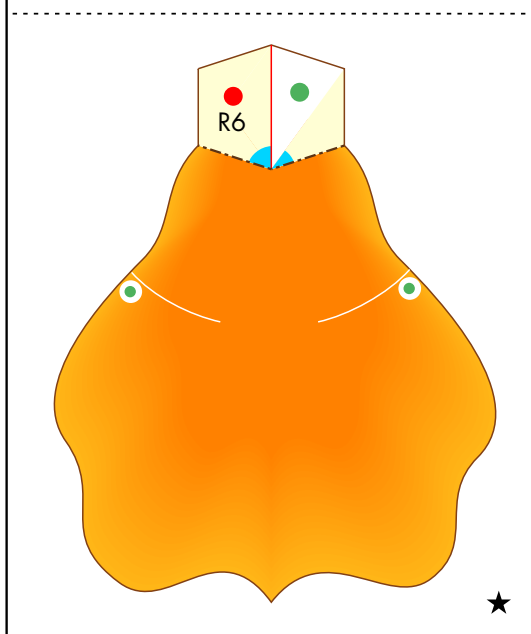
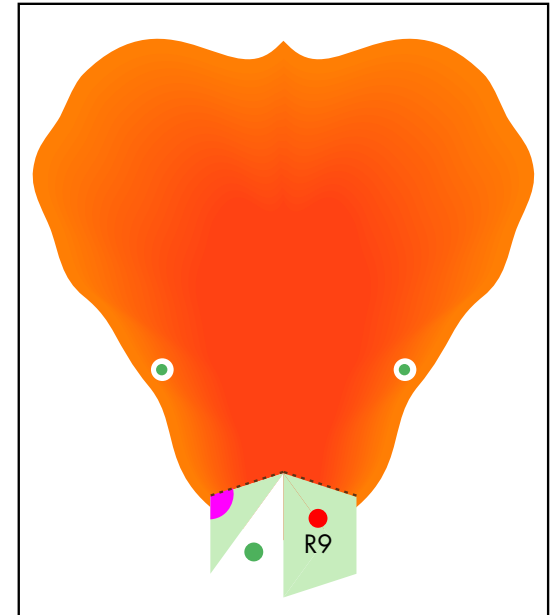
R7



R8

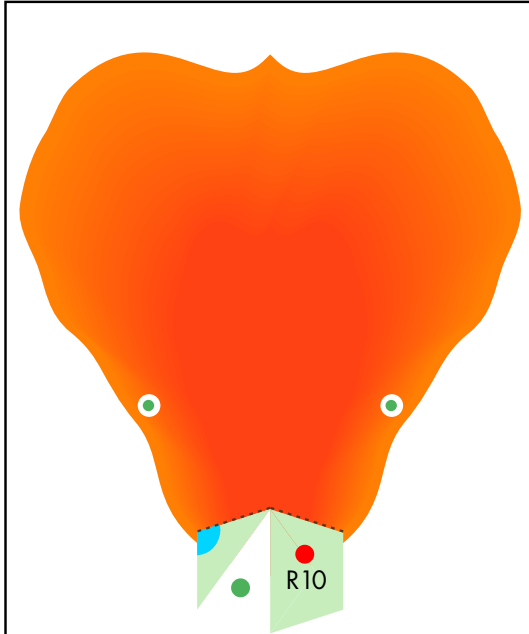


R9

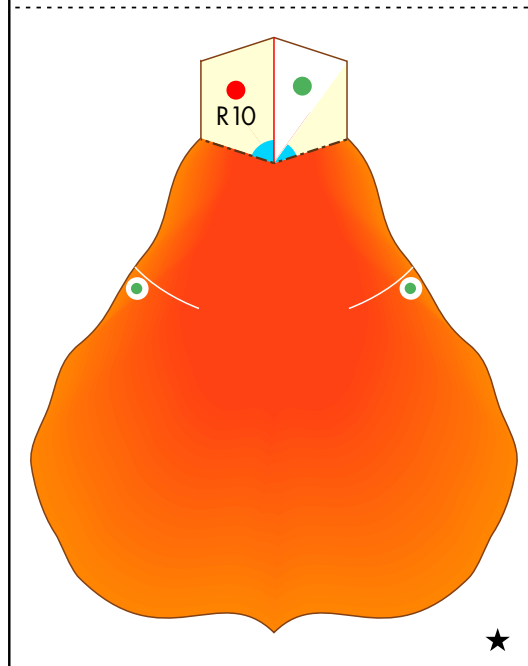
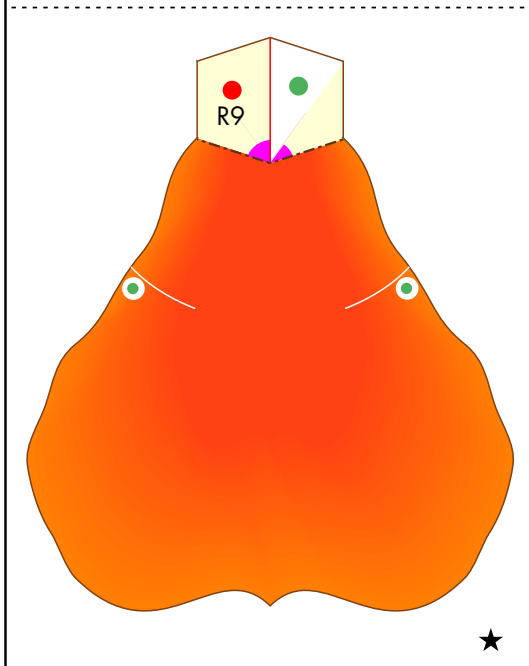
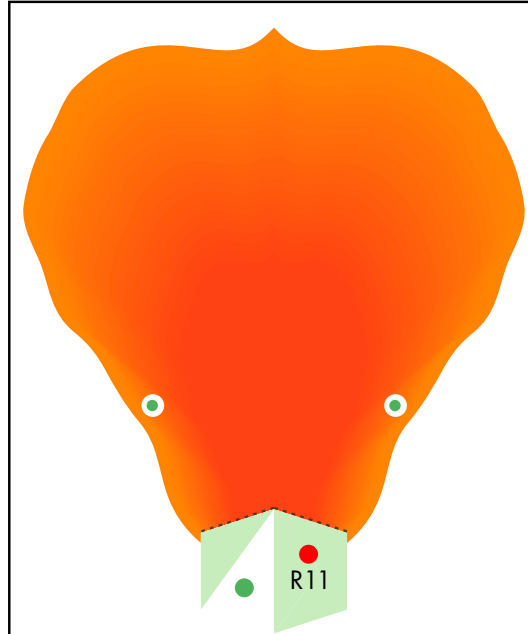


# Bouquet (roses) : Pattern

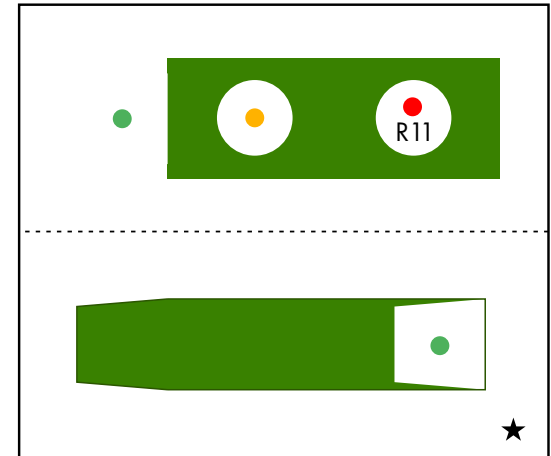
R10



R11

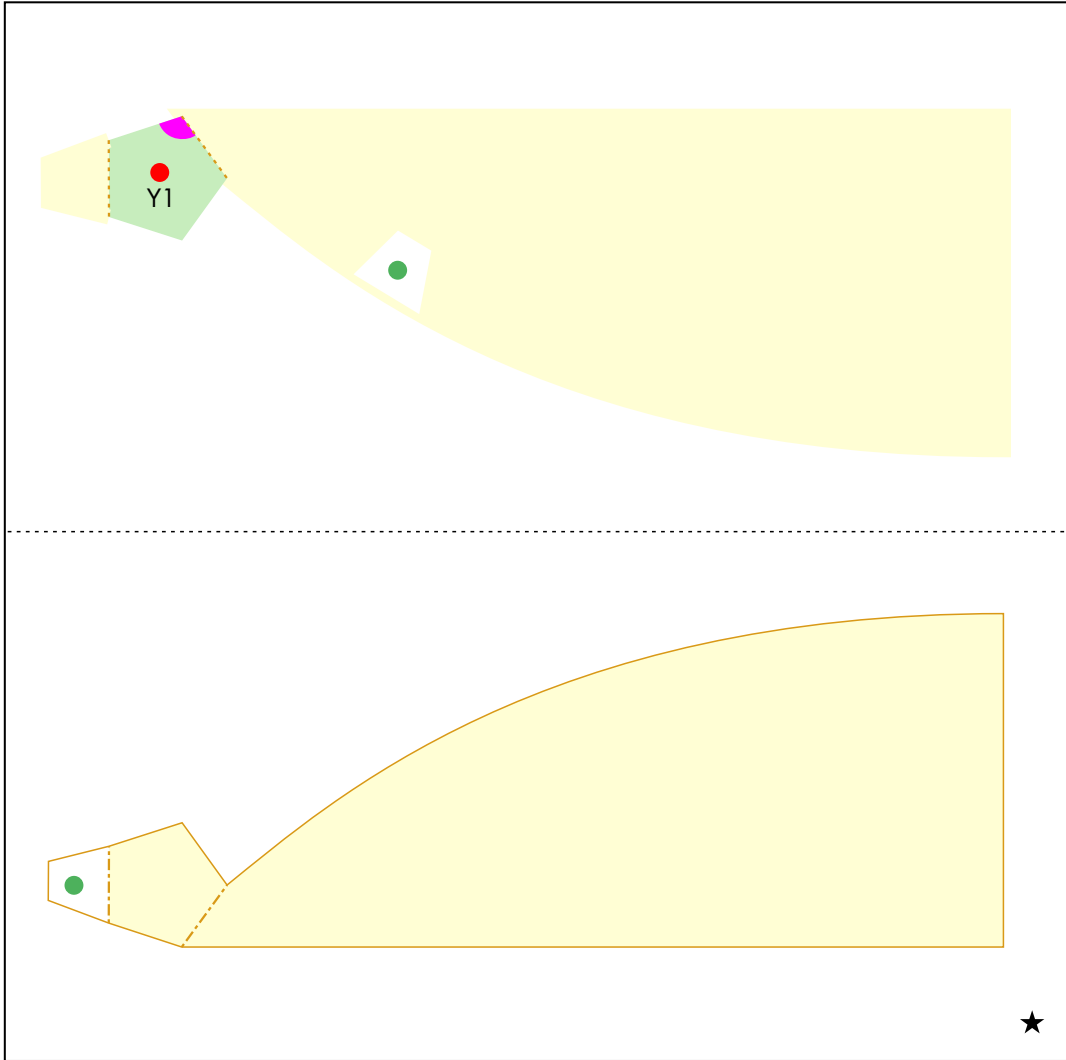


R12

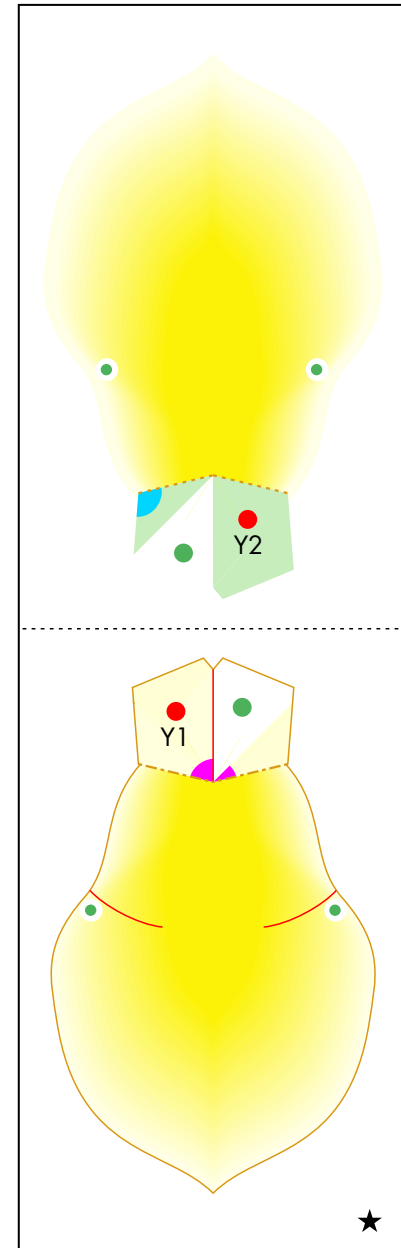




Y1

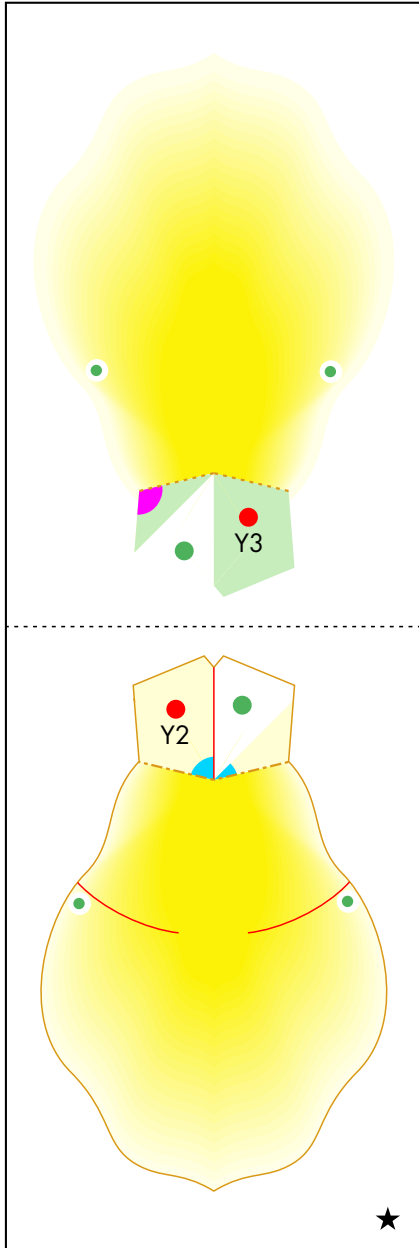


Y2

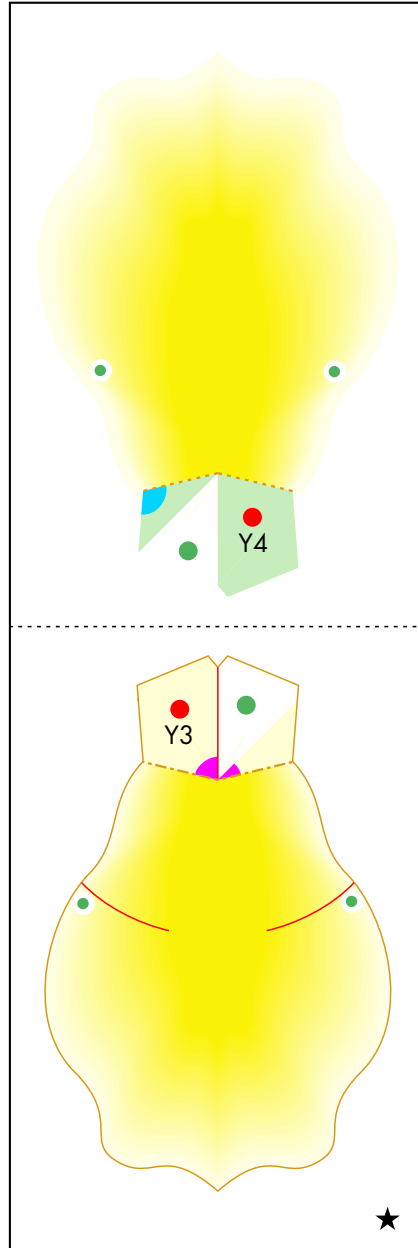


# Bouquet (roses) : Pattern

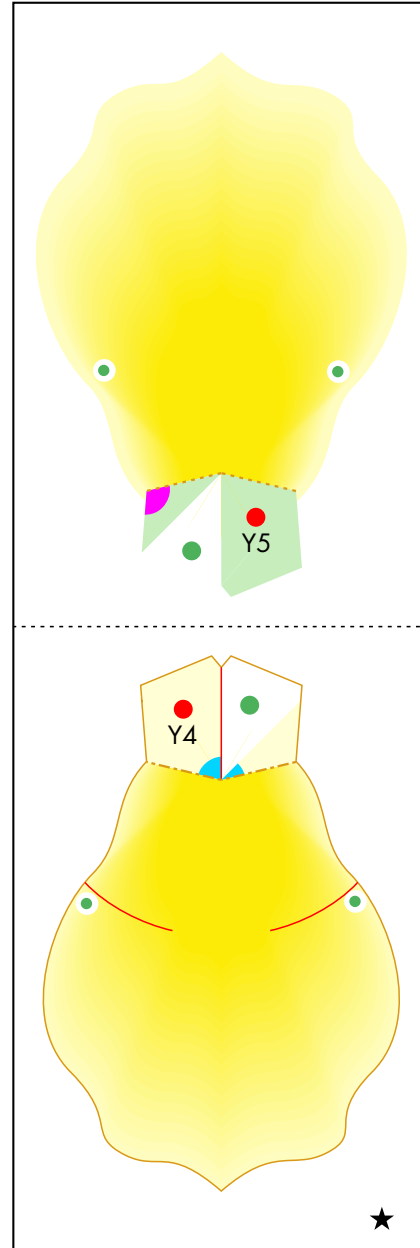
Y3



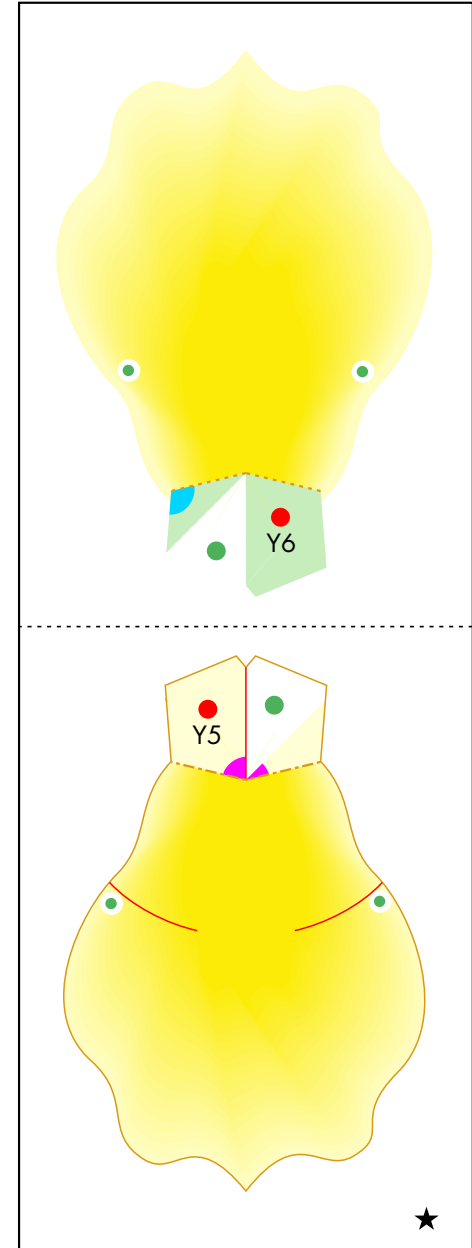
Y4



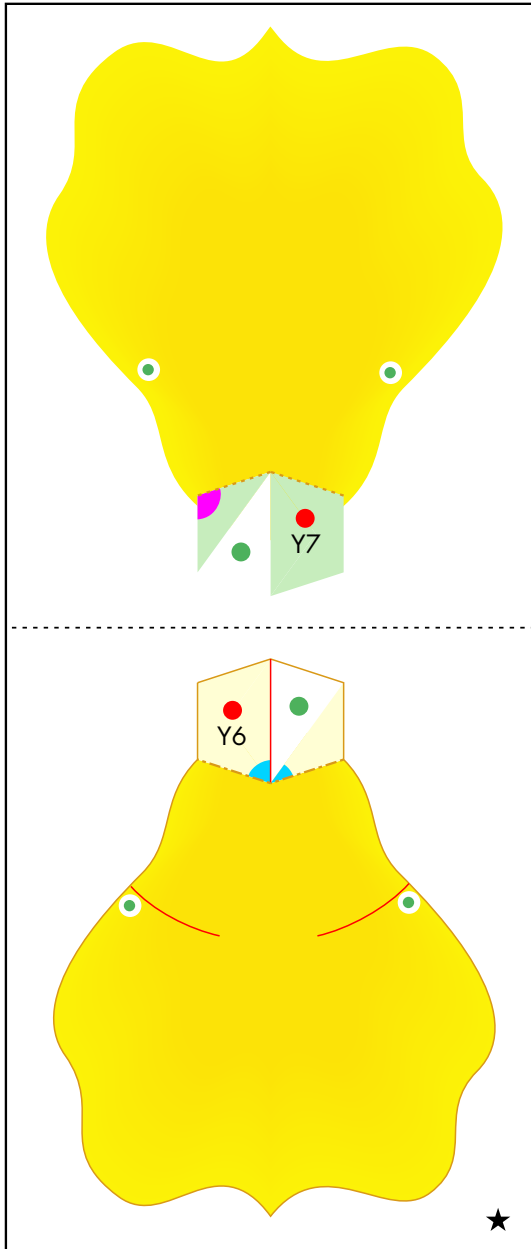
Y5



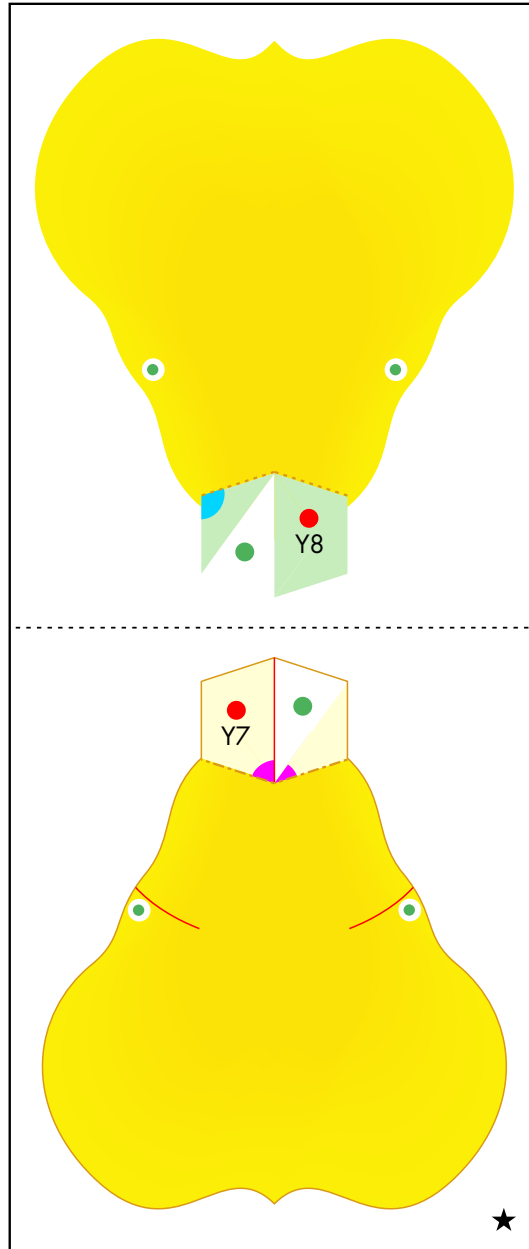
Y6



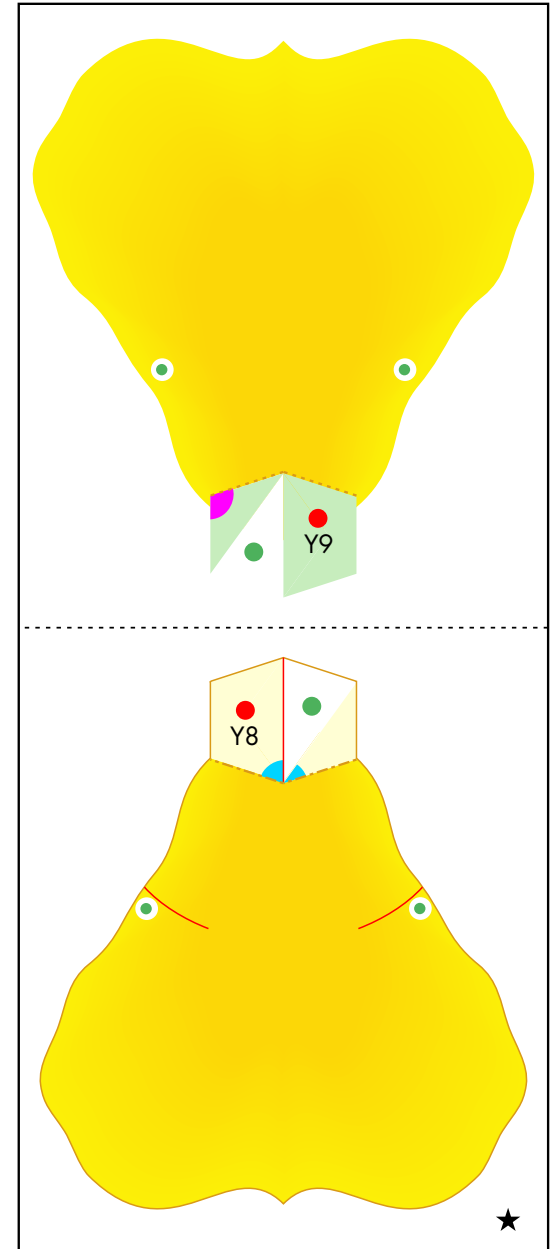
Y7



Y8

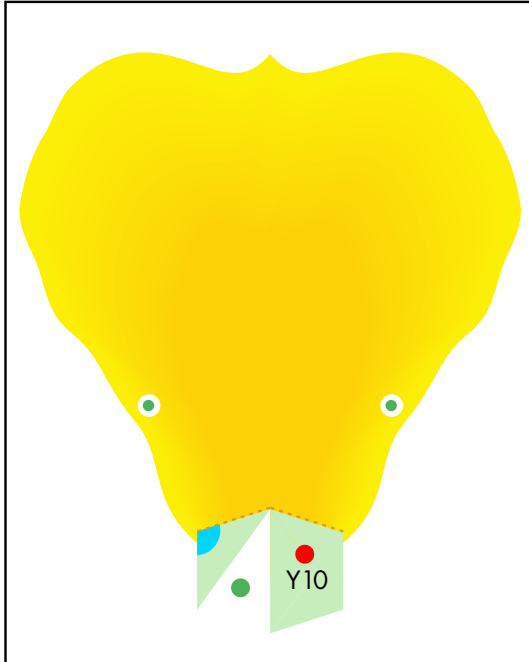


Y9

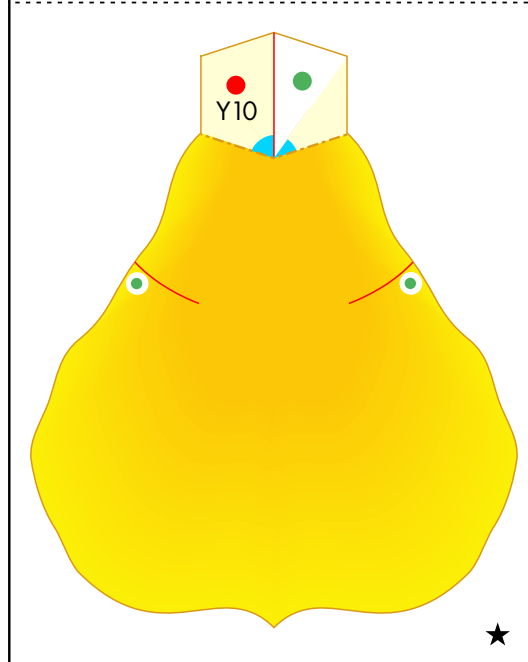
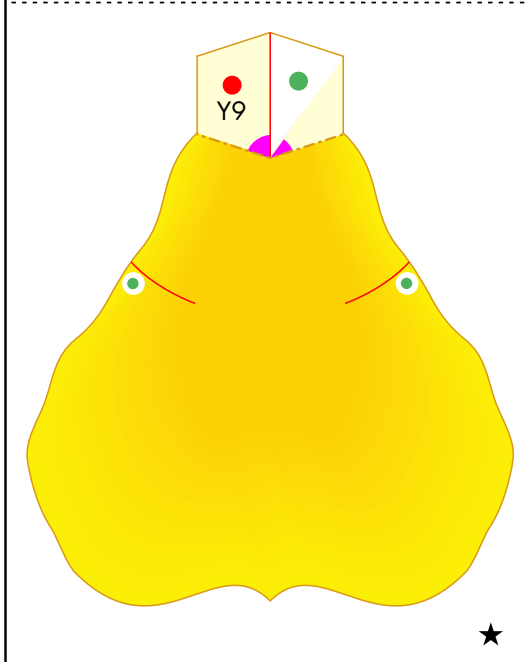
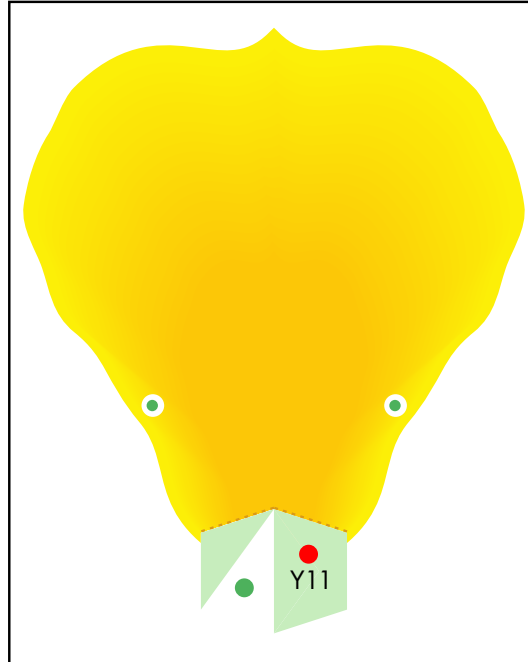


# Bouquet (roses) : Pattern

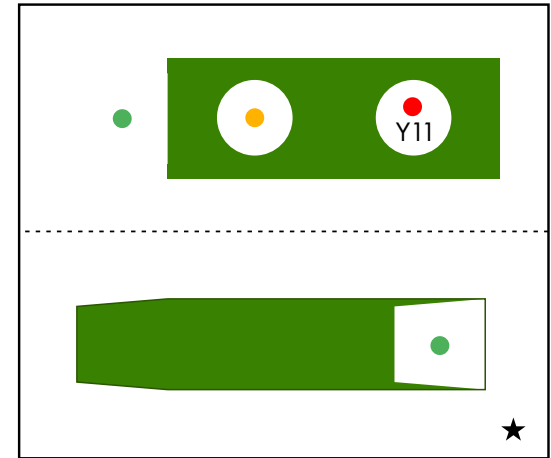
Y10



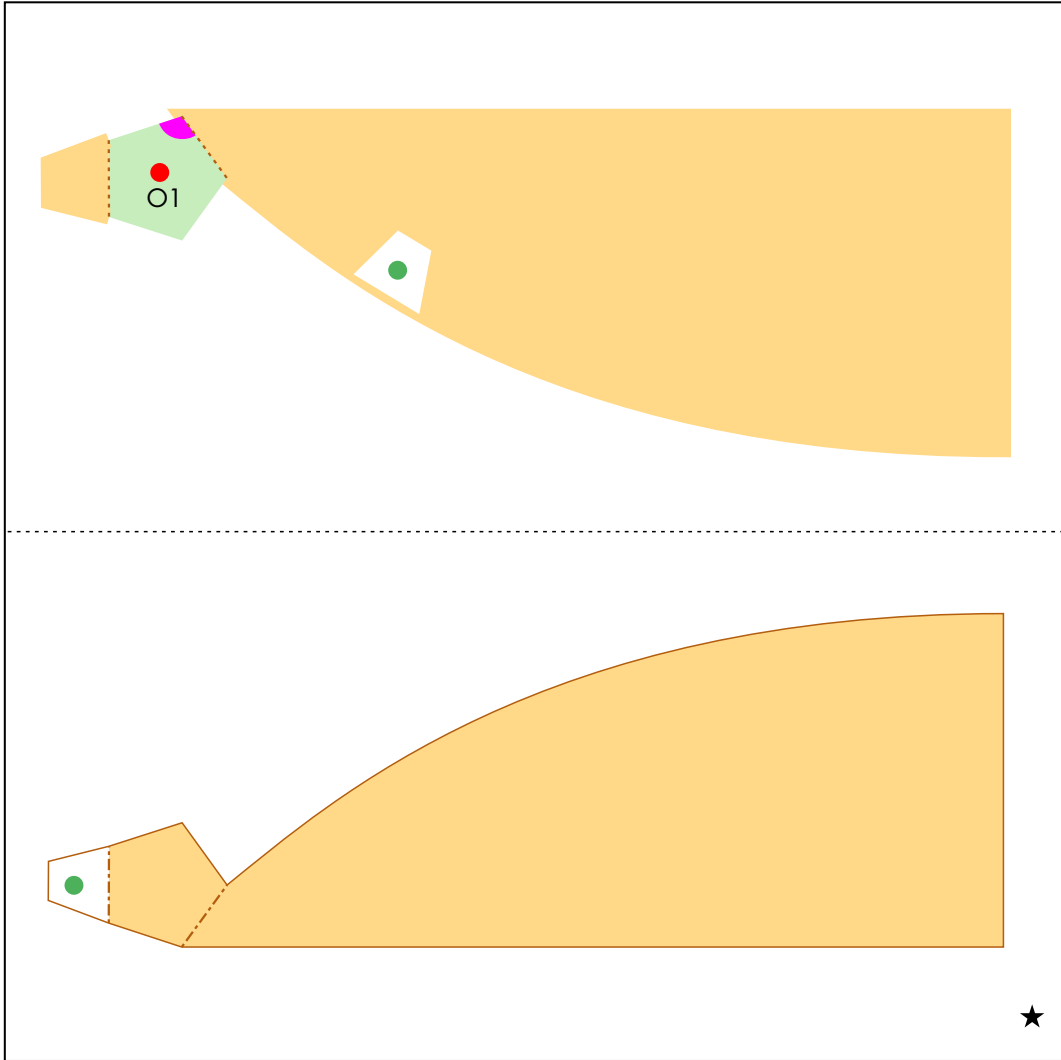
Y11



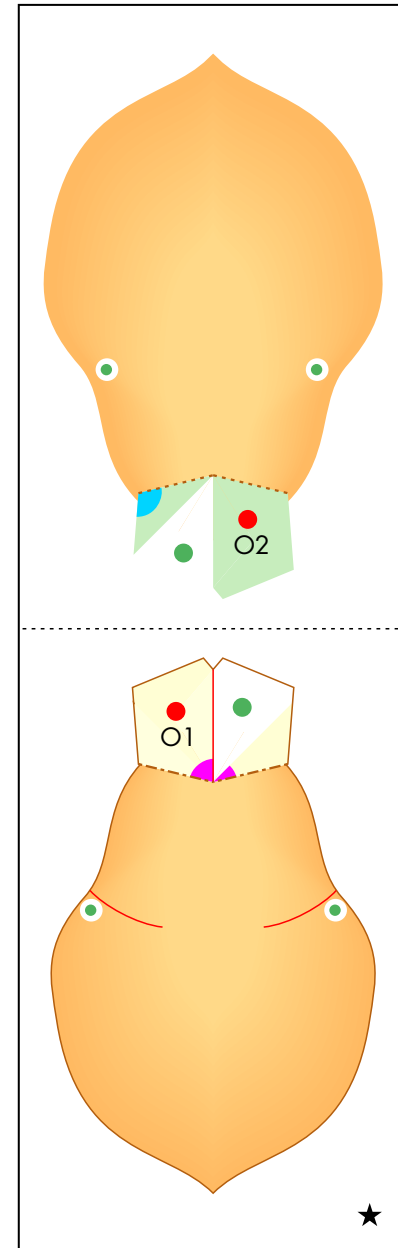
Y12



O1

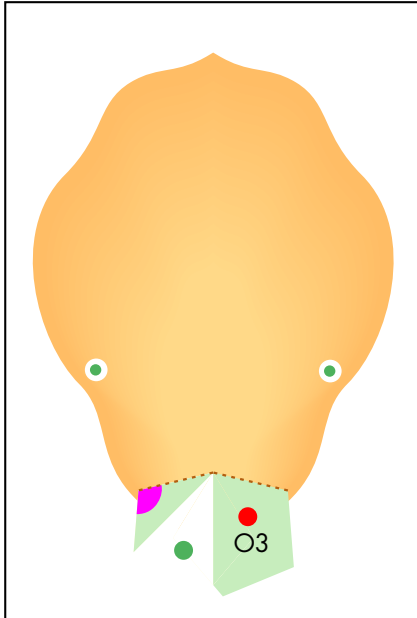


O2

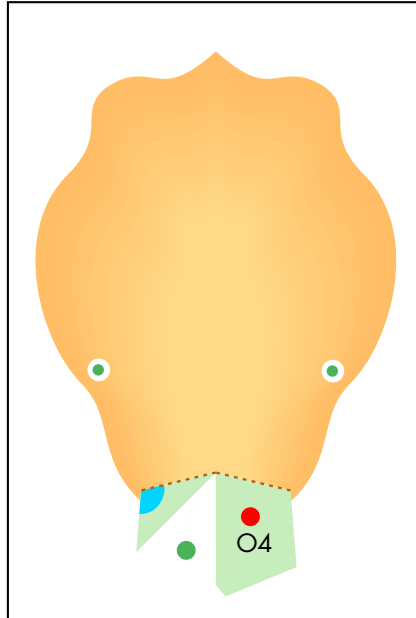


# Bouquet (roses) : Pattern

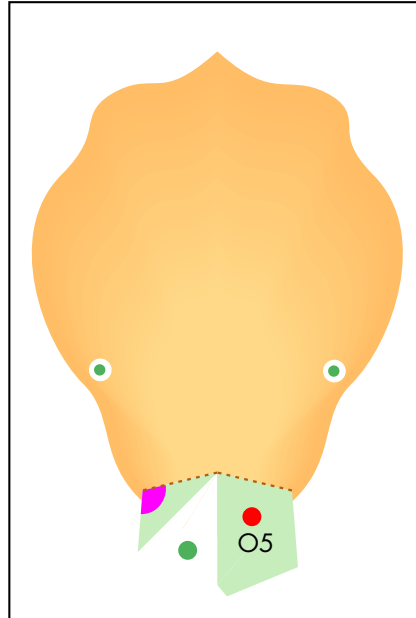
O3



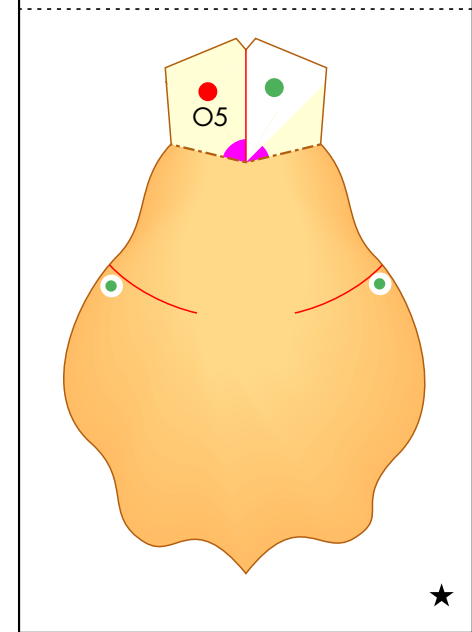
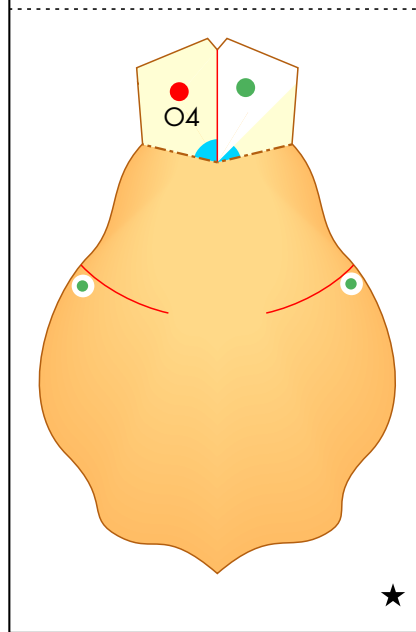
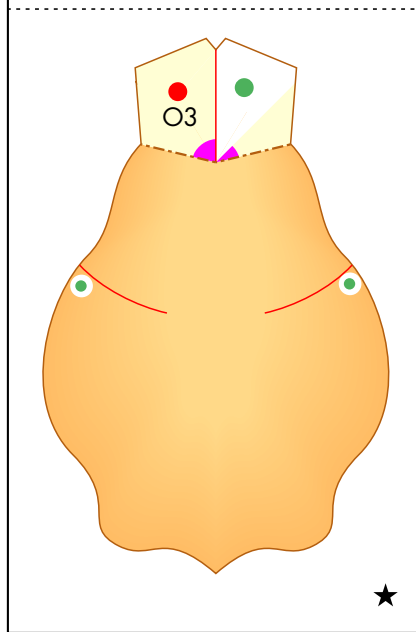
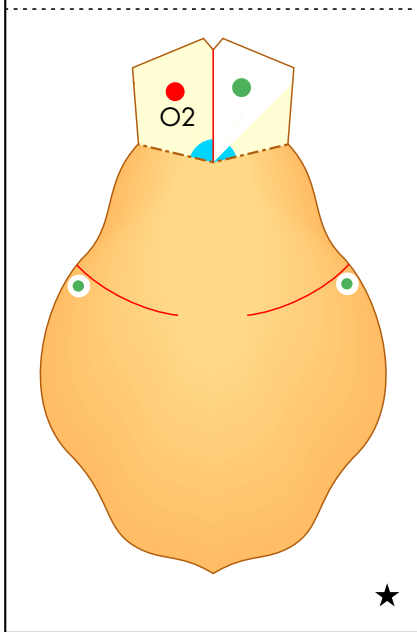
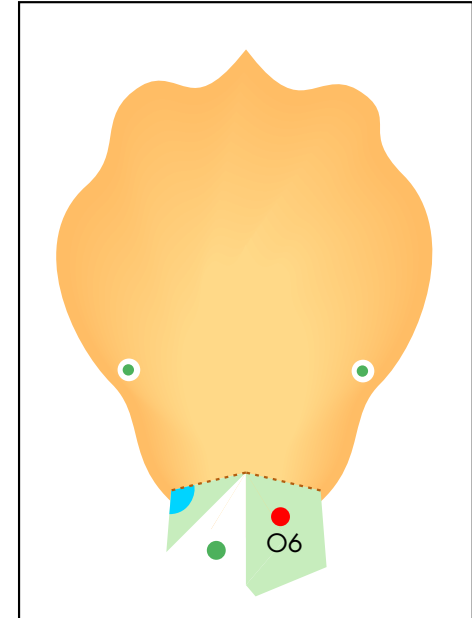
O4



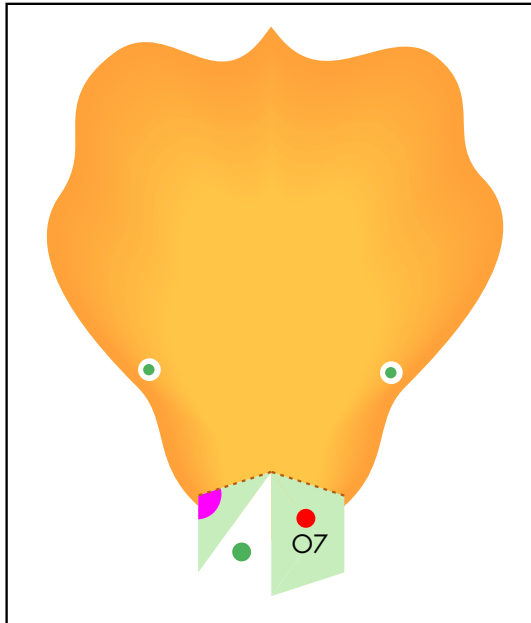
O5



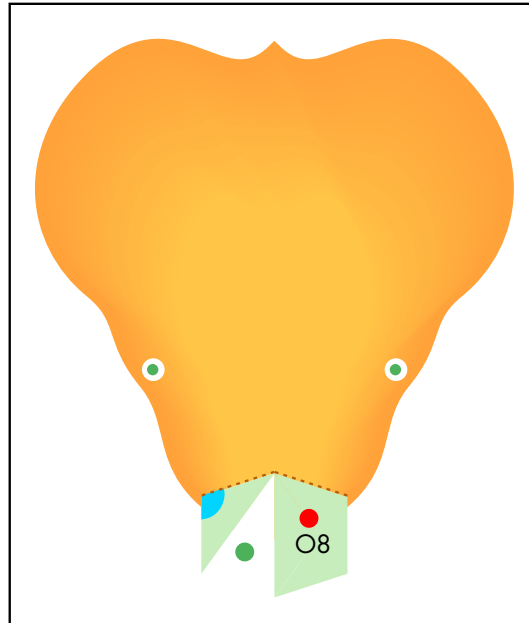
O6



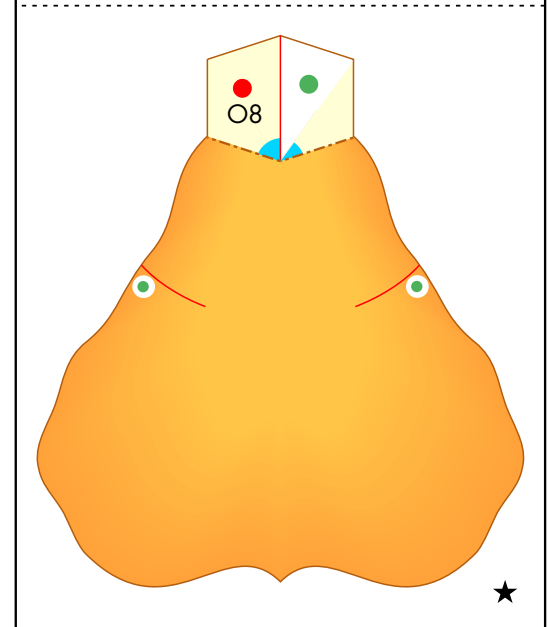
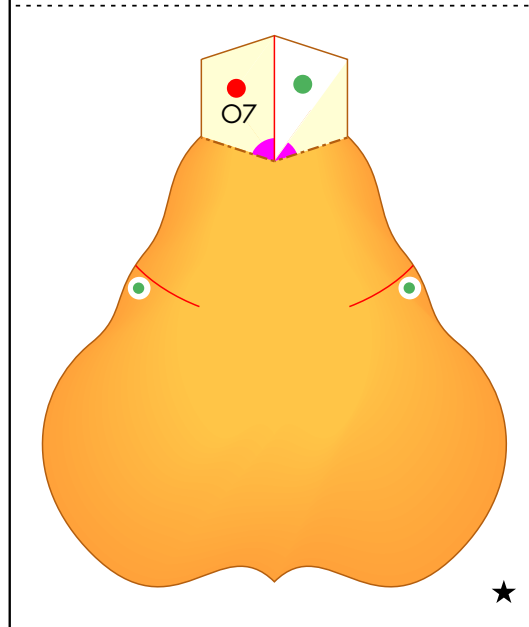
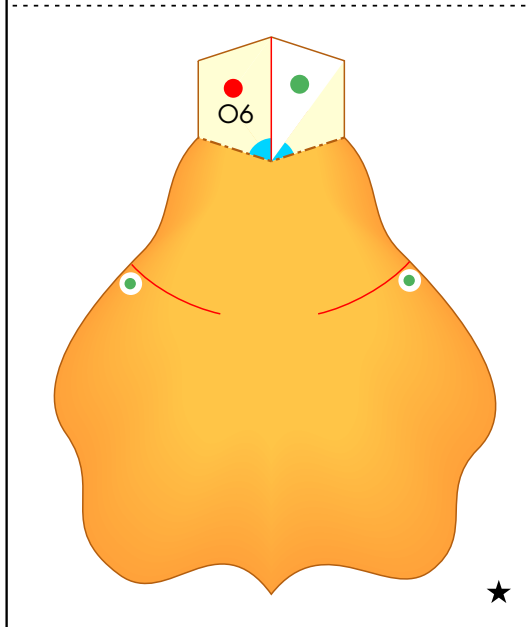
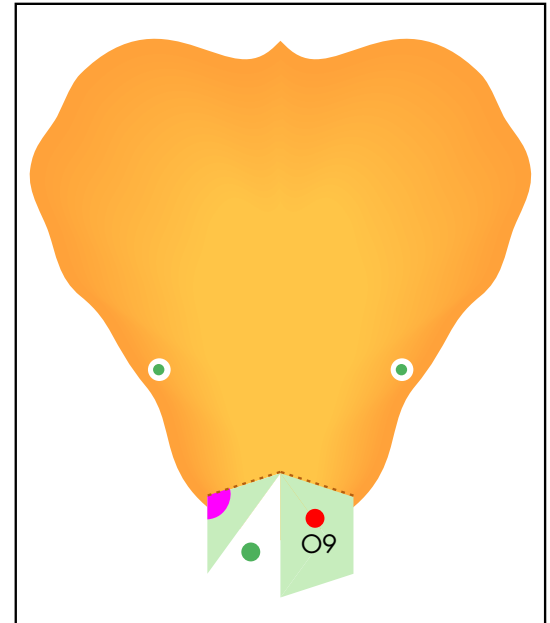
O7



O8

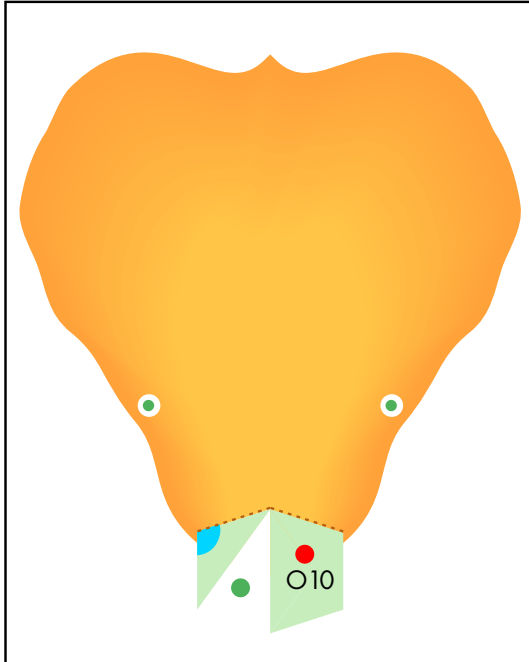


O9

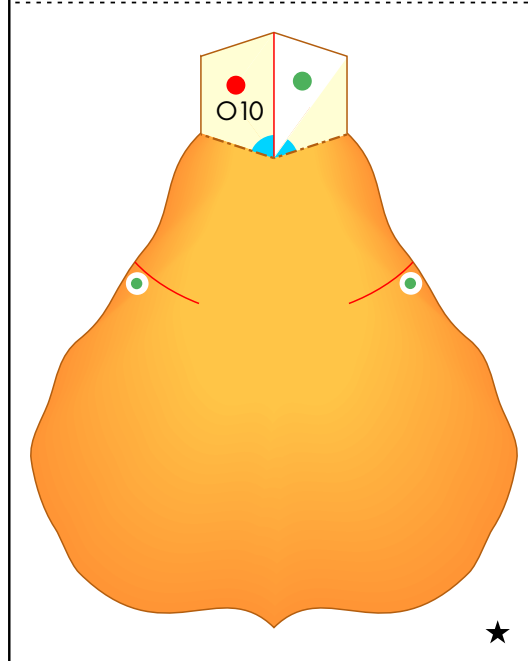
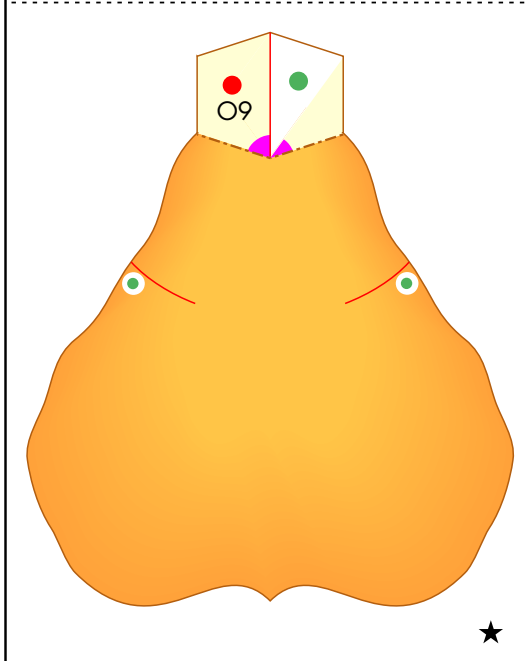
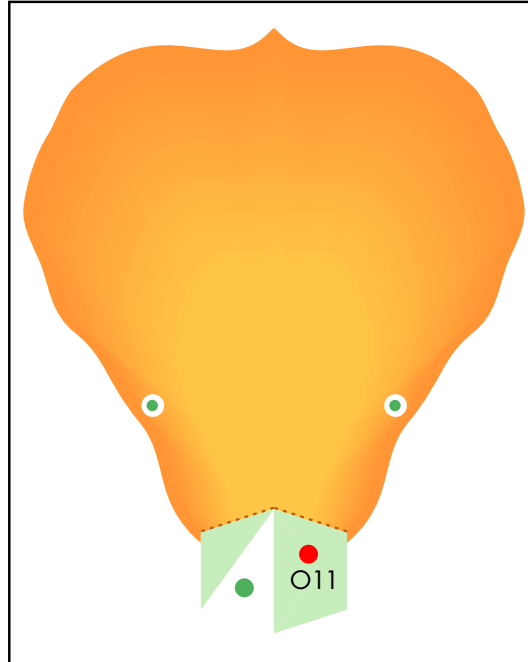


# Bouquet (roses) : Pattern

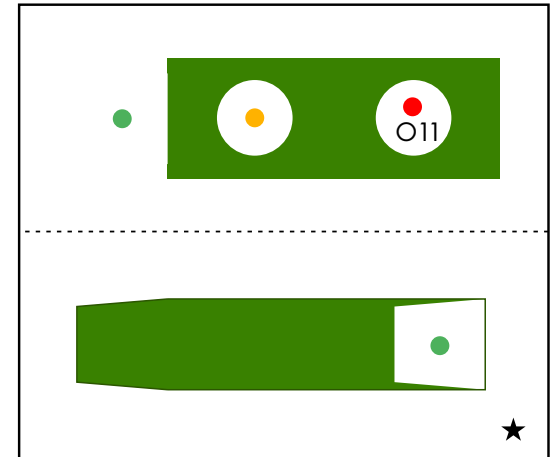
O10



O11

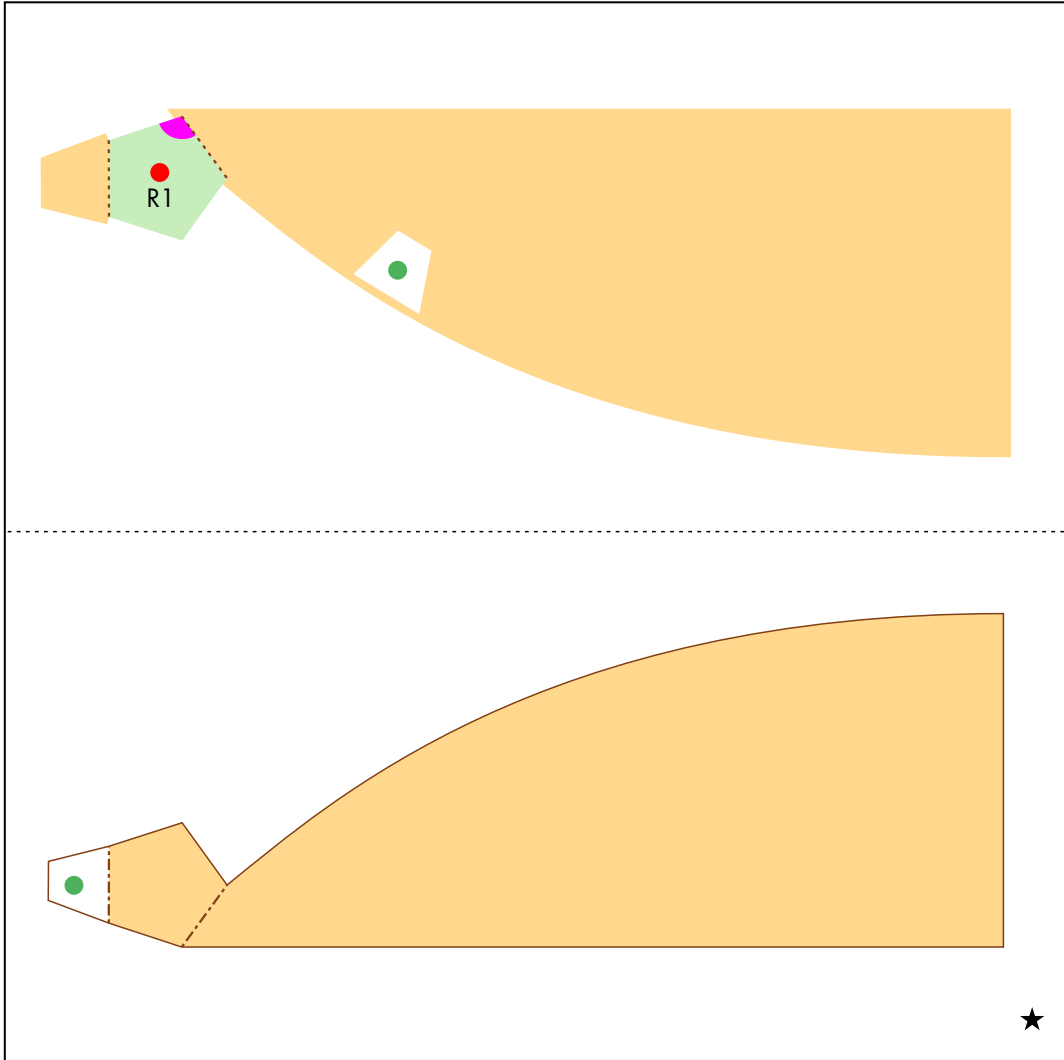


O12

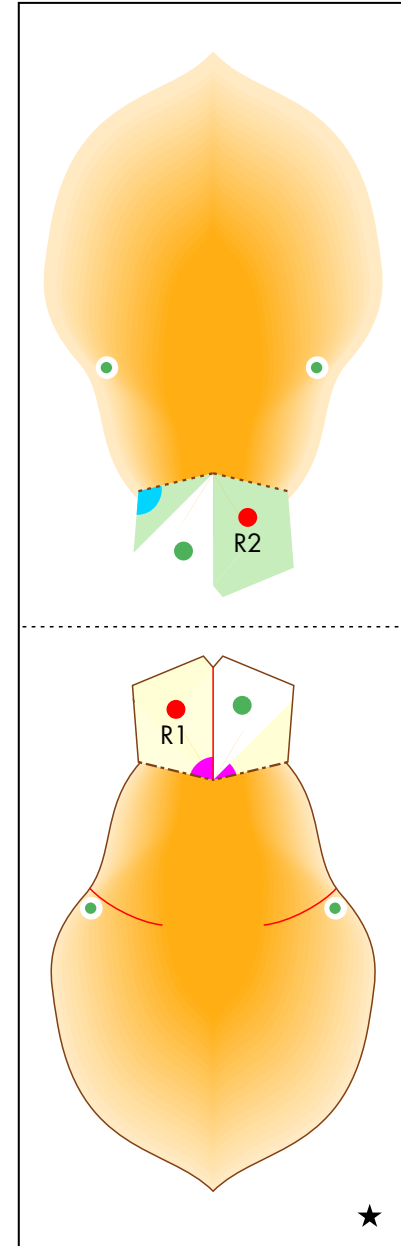




R1

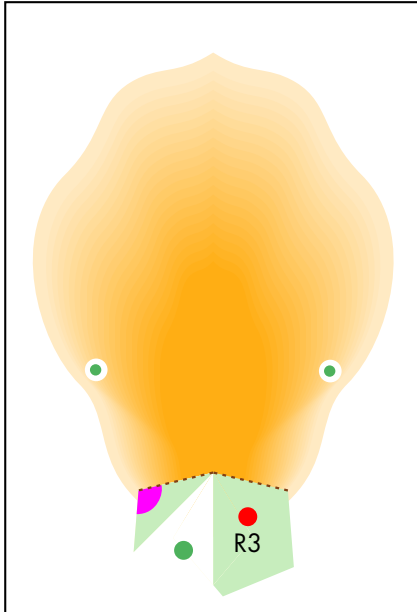


R2

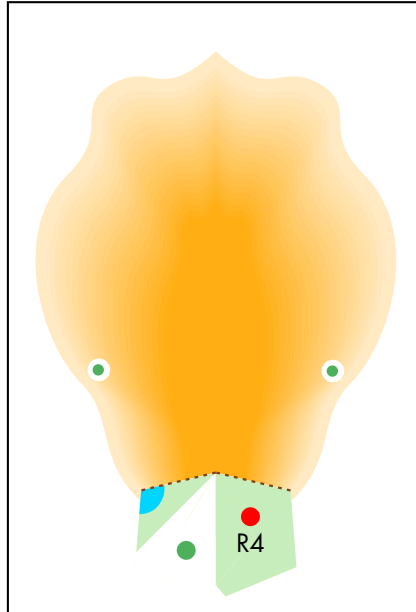


# Bouquet (roses) : Pattern

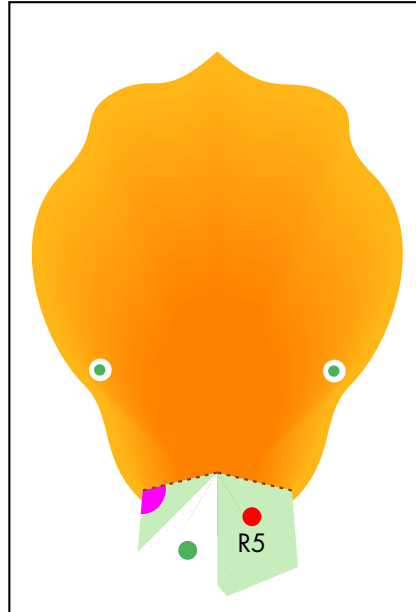
R3



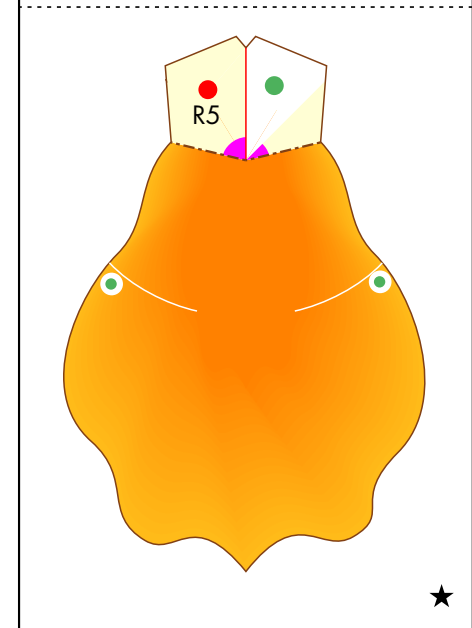
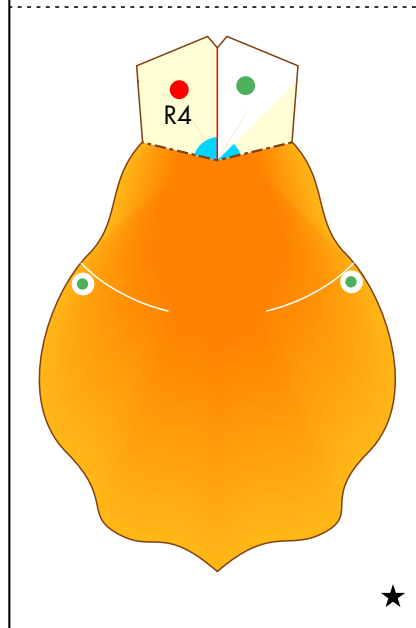
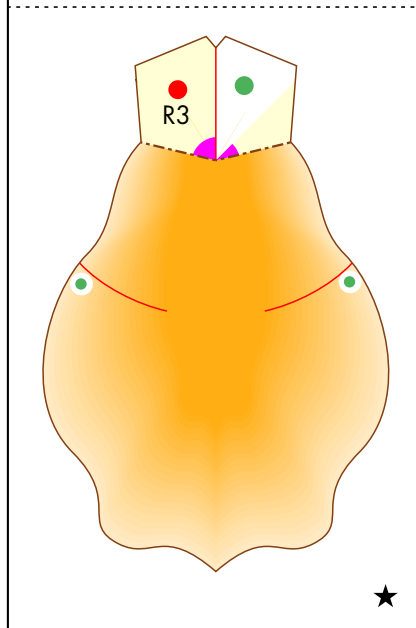
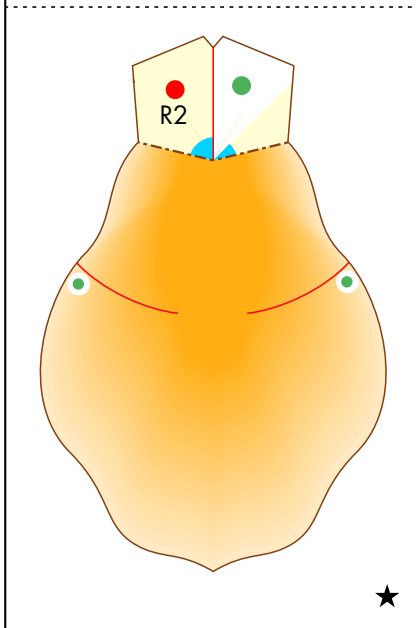
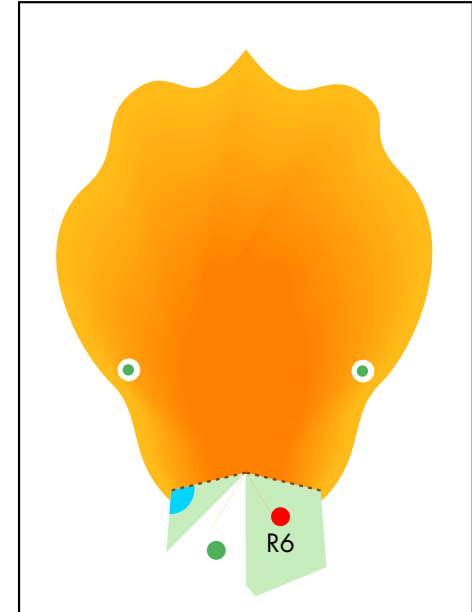
R4



R5

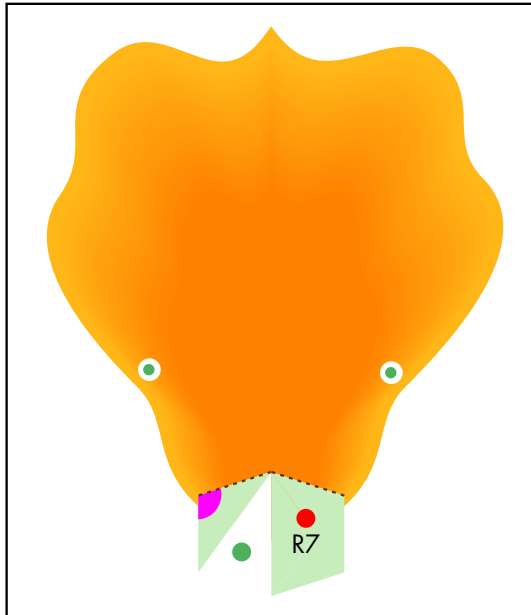


R6

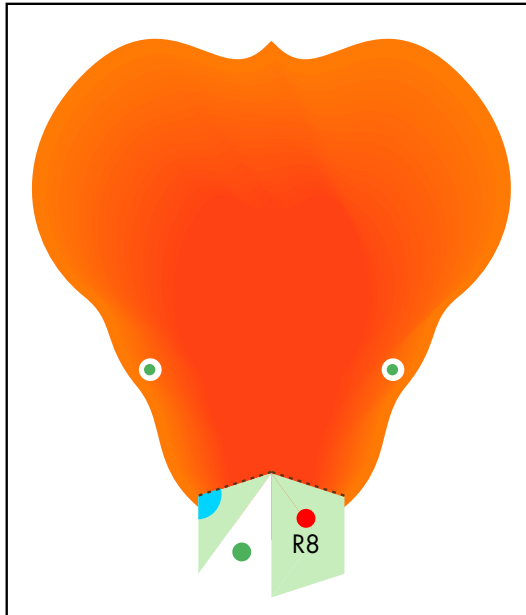


# Bouquet (roses) : Pattern

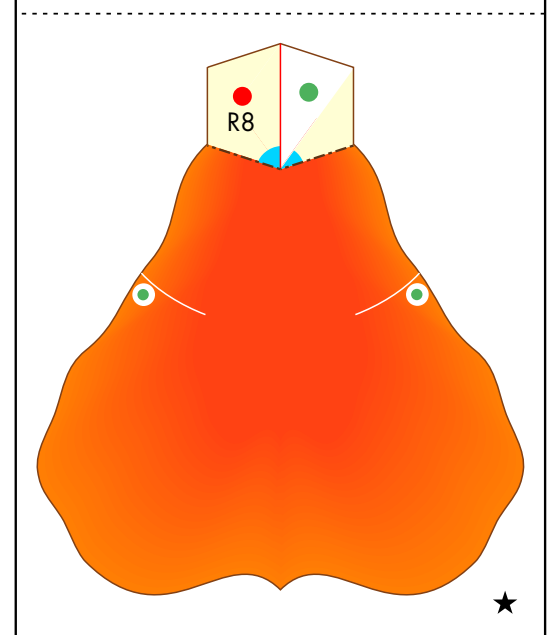
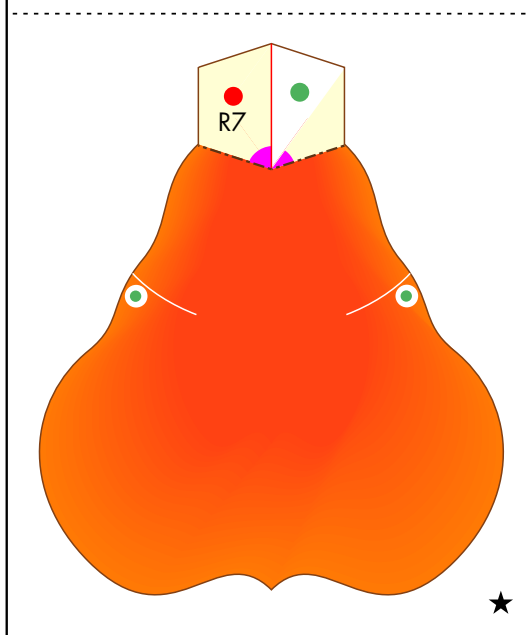
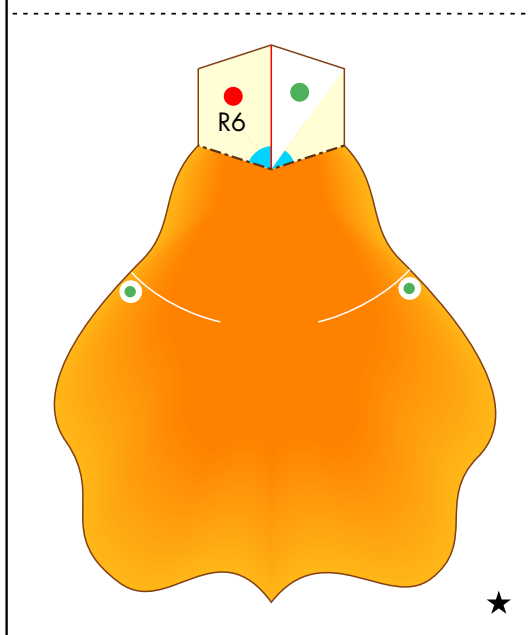
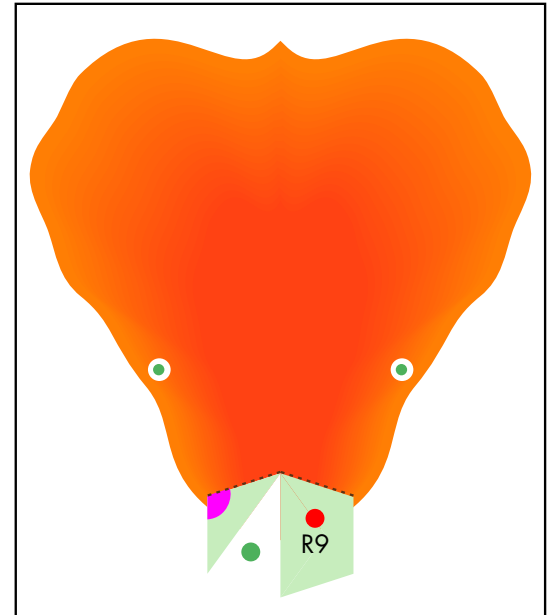
R7



R8

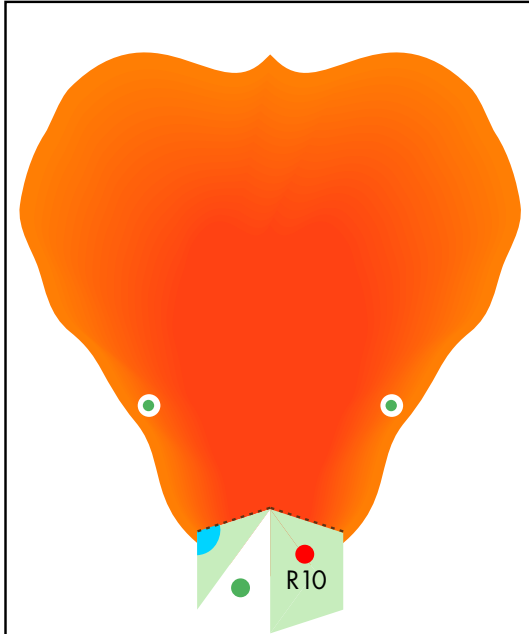


R9

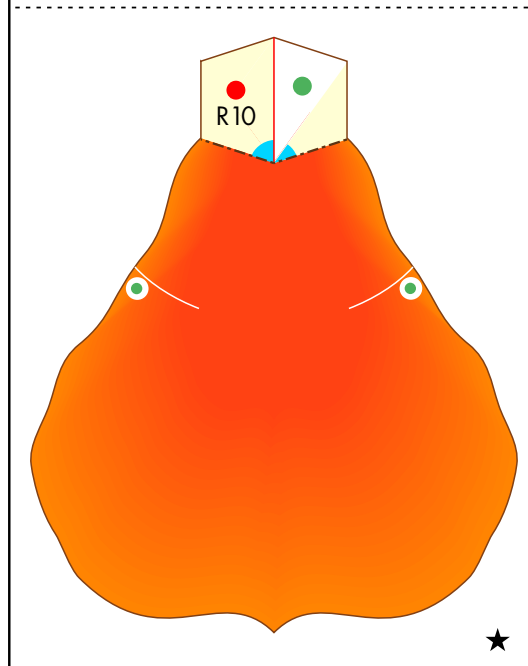
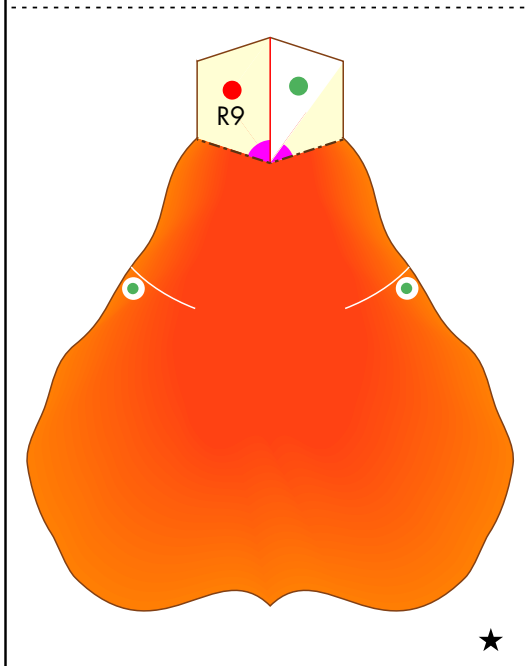
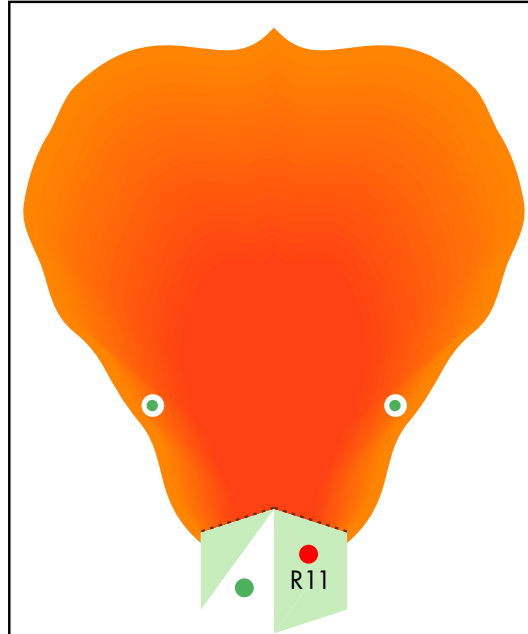


# Bouquet (roses) : Pattern

R10



R11



R12

