

Advent calendar (Christmas): Assembly Instructions

© Canon Inc. © Ayaka Hirao © Takako Takahashi



PAPER CRAFT

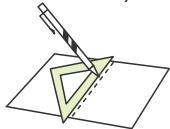
<http://www.canon.com/c-park/en/>



View of completed model

Assembly Instructions: Five US letter sheets (No.1 to No.5)

*Build the model by carefully reading the Assembly Instructions, in the parts sheet page order.

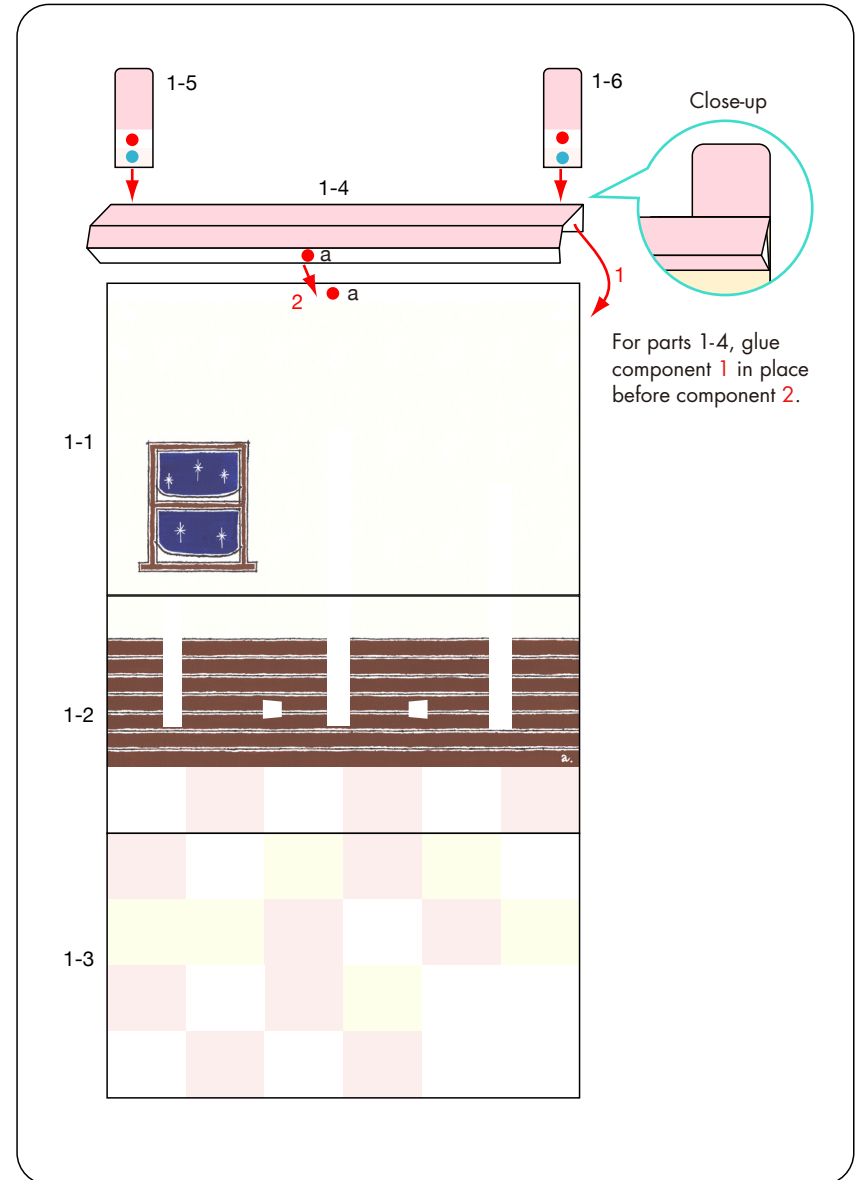
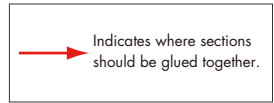


*Hint: Trace along the folds with a ruler and an exhausted pen (no ink) to get a sharper, easier fold.

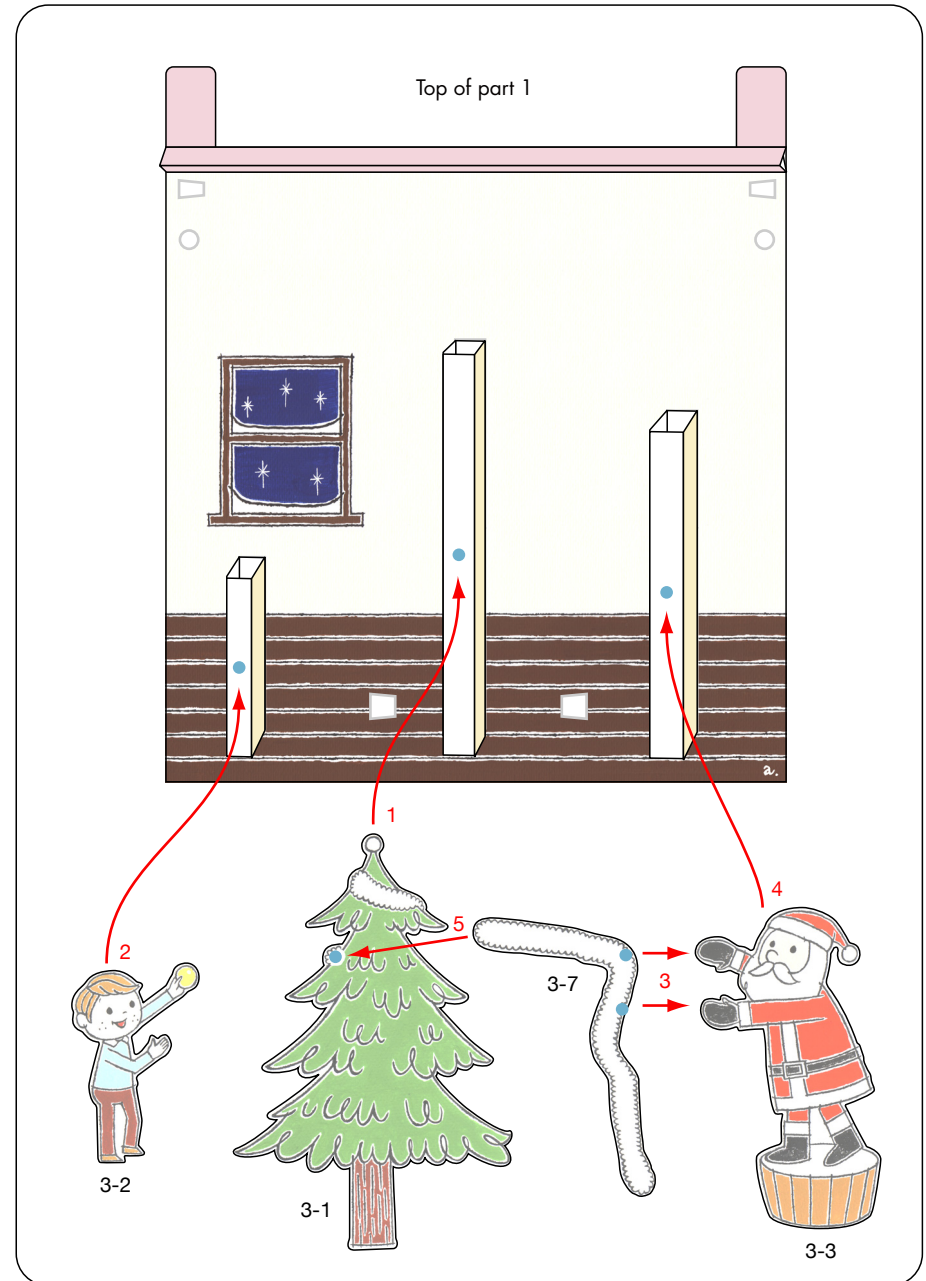
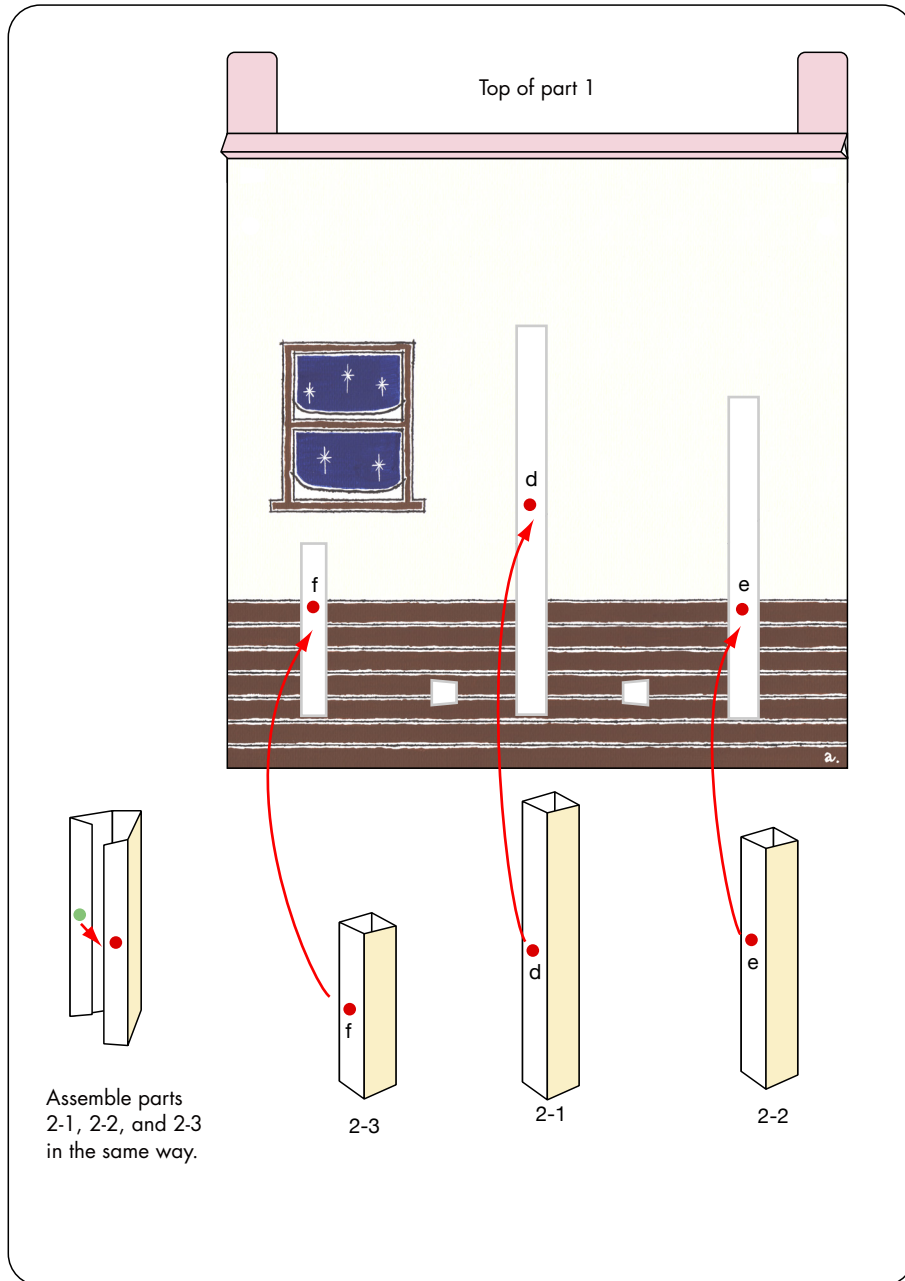
Assembly Instructions

	Mountain fold(dotted line) Make a mountain fold.	 Glue The glue spot(colored dot) shows where to apply the glue. ● Glue spot(Red dot) Glue parts with the same number together. ● Glue spot(Green dot) Glue within the same part. ● Glue spot(Blue dot) Glue to the rear of the other part.
	Valley fold(dashed and dotted line) Make a valley fold.	
	Scissors line(solid line) Cut along the line.	
	Cut in line(solid line) Cut along the line.	
Tools and materials		Scissors, set square, glue(We recommend stick glue), pencil, used ballpoint pen, toothpicks, tweezers, (useful for handling small parts)
Assembly tip		Before gluing, crease the paper along mountain fold and valley fold lines and make sure rounded sections are nice and stiff.
Caution		Glue, scissors and other tools may be dangerous to young children so be sure to keep them out of the reach of young children.

Before starting assembly: Writing the number of each section on its back side before cutting out the sections is highly recommended.
 (* This way, you can be sure which section is which even after cutting out the sections.)

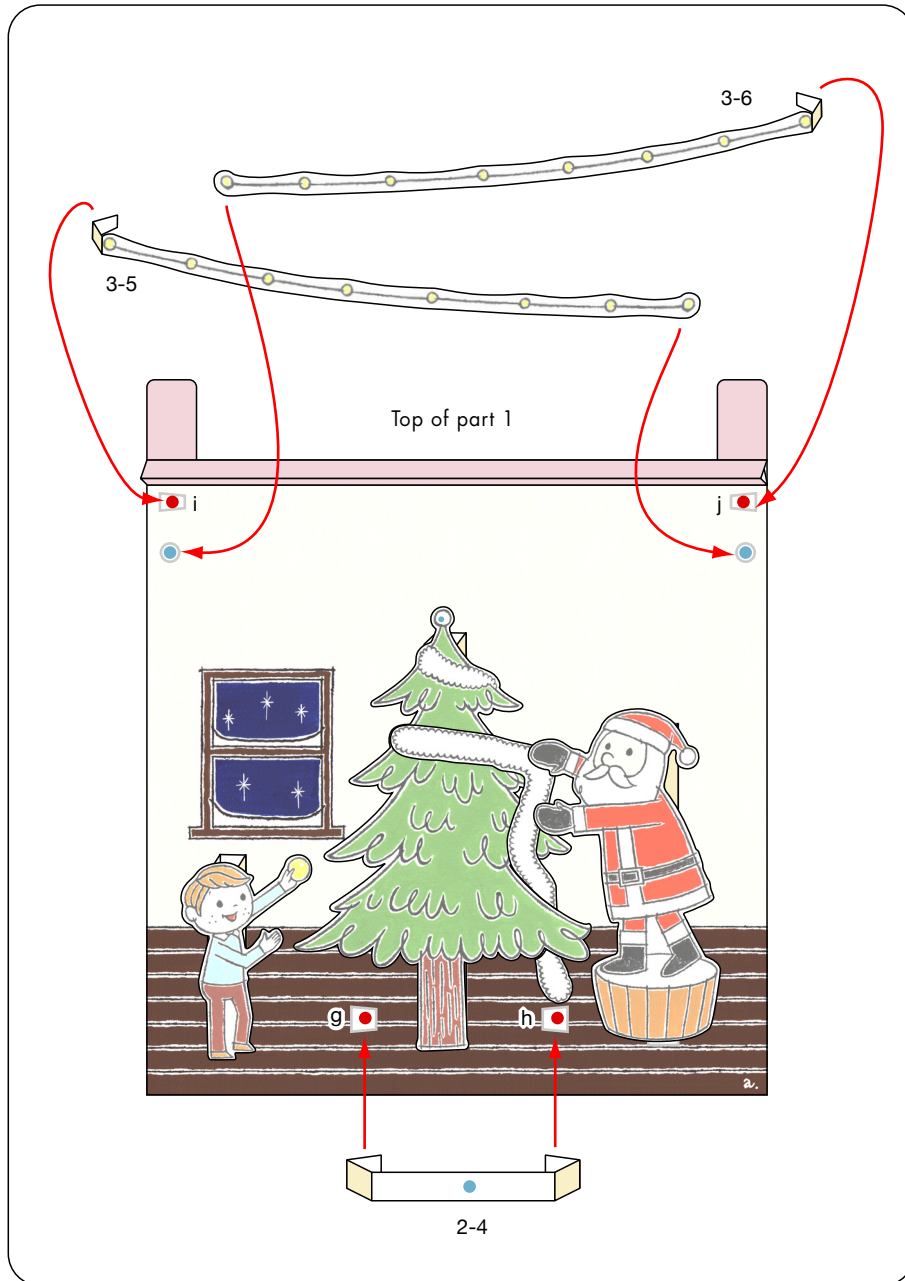


Advent calendar (Christmas): Assembly Instructions

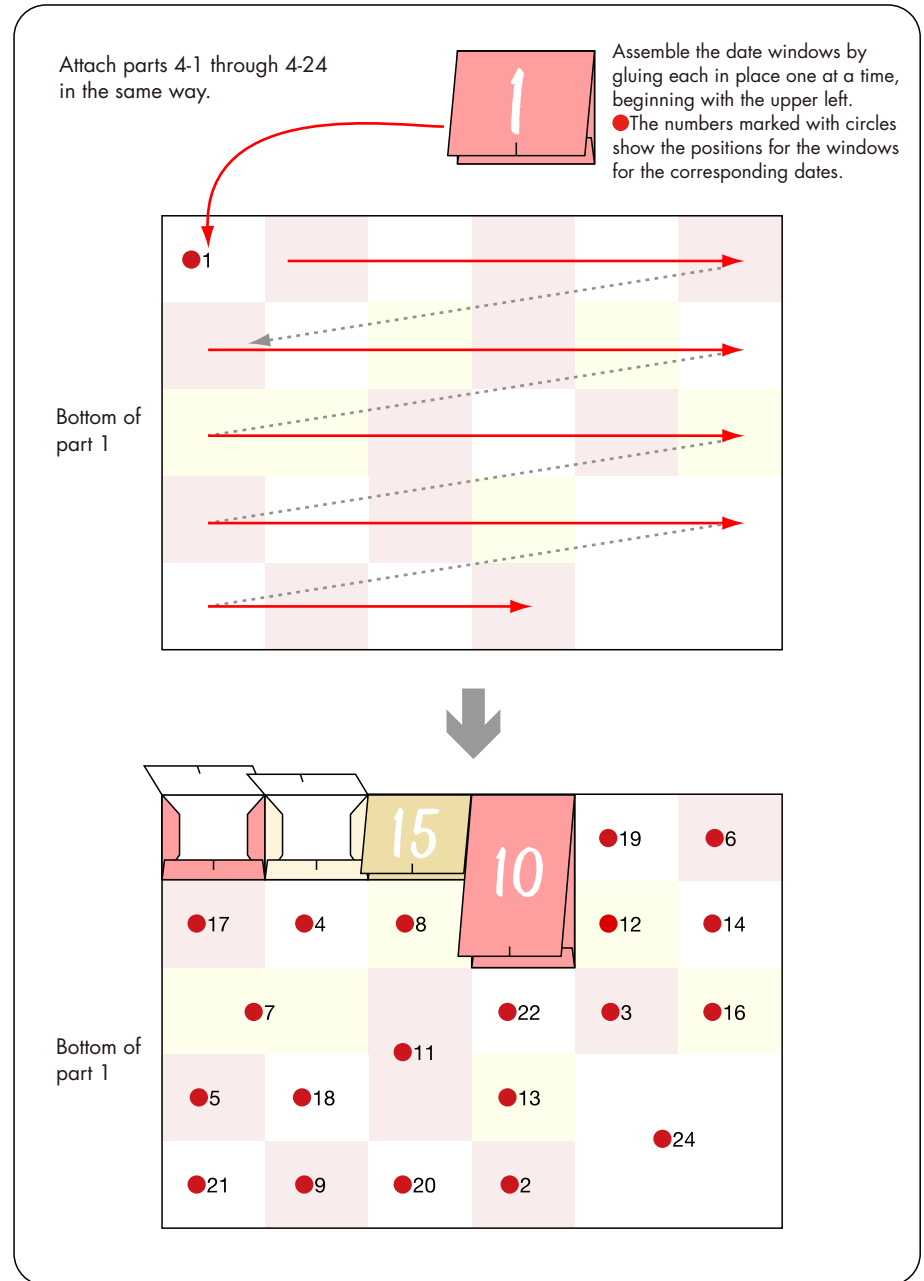
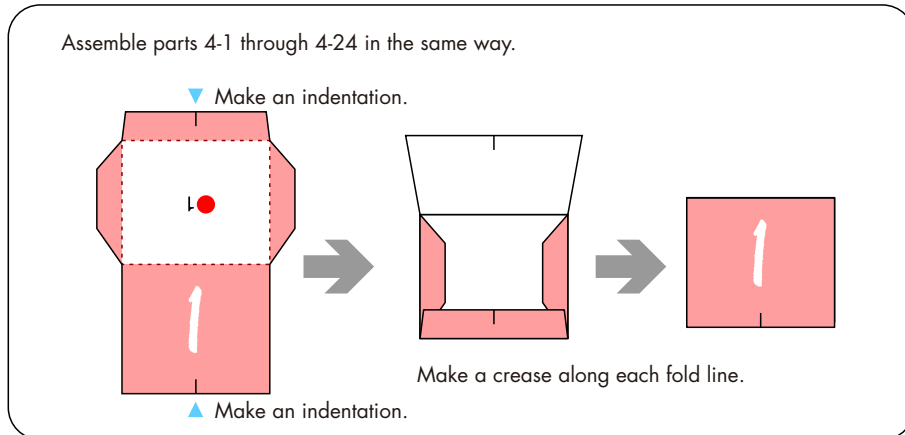
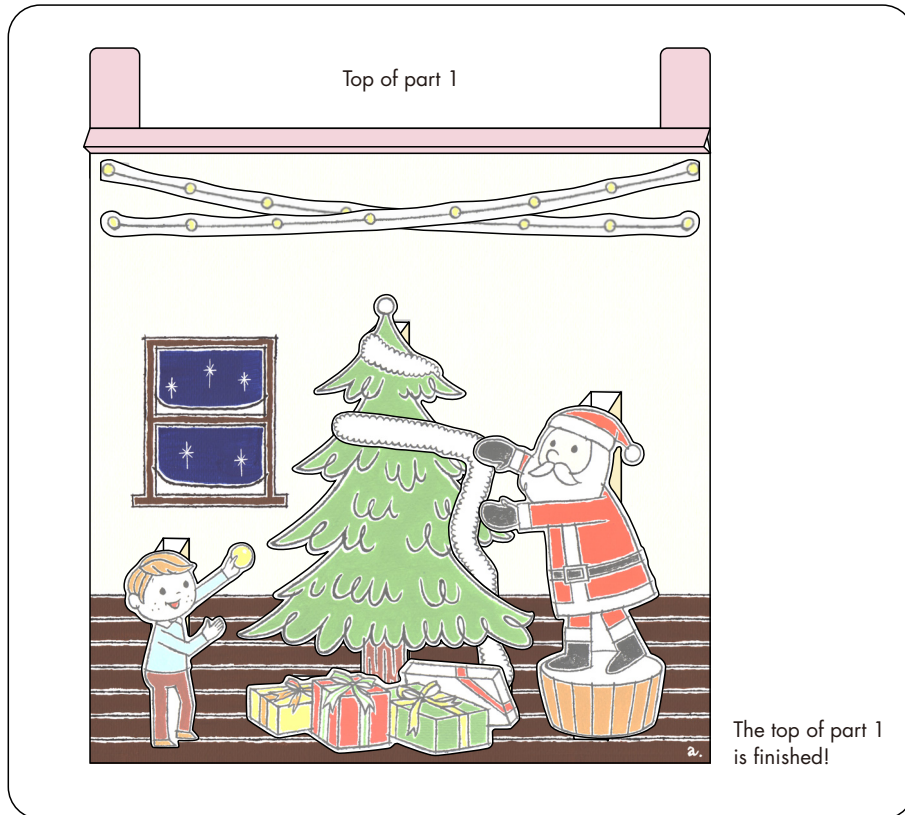


Advent calendar (Christmas): Assembly Instructions

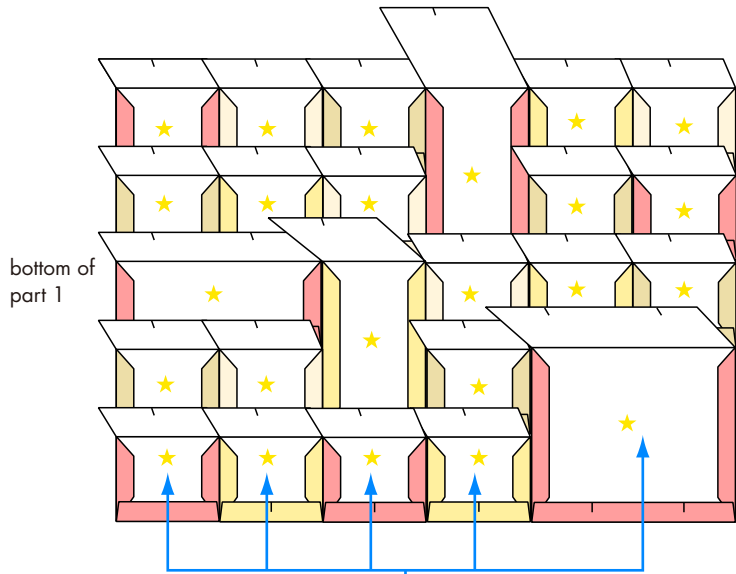
© Canon Inc. © Ayaka Hirao © Takako Takahashi



Advent calendar (Christmas): Assembly Instructions



Advent calendar (Christmas): Assembly Instructions



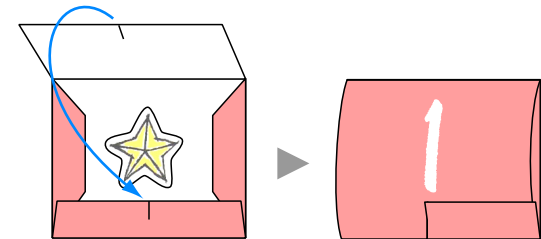
bottom of part 1

Insert parts 5-1 through 5-24-2 in the 24 date windows.

Insert part 5-1 in date window 1 and parts 5-24-1 and 5-24-2 in date window 24. Insert each of the remaining parts in any date window you like.

How to use the advent calendar

Open a date window on each day of Advent (from date window 1 through 24), then attach the decoration inside the window anywhere you like on the calendar picture. In this way, you'll finish your decoration of the advent calendar over the 24 days of Advent. You can use the note paper inserted in window 24 any way you like - for example by writing a letter to your child or to Santa Claus.



After inserting all of parts 5-1 through 5-24-2 into the date windows, fold the windows closed along their indentations. Your advent calendar is finished!

