

# THE SEASONS

Autumn Festival

“Mikoshi”



## Assembly Instructions



Thank you for downloading this special paper craft model of a Japanese Mikoshi. By matching the named and numbered parts in the instructions, you and your family can complete a paper craft model of a unique Japanese tradition.

- Assembly instructions Three A4-sized sheets
- Paper craft: Three A4-sized sheets with 18 parts in all

These instructions apply only to the "Mikoshi".

These Paper Craft parts are easier to work with when printed out on strong, thick paper (like postcard stock).

\*In creating these Paper Craft models we use 135kg Kent paper stock (0.18mm).

# 1 To begin

## Tools and materials needed

- Ruler - Scissors - Blade cutter or "Exacto-knife" - Awl or other pointed tool (for making a folding crease)
- Felt pen - Pin set - Glue - Hand towel

## Items of Caution

- \* Take care when using sharp or pointed objects. When using bladed cutting tools, place a heavy sheet of paper under the paper you want to cut.
- \* Use glue and other adhesives only in well-ventilated areas.
- \* When printing, use a slightly reduced font size as there may be differences in dimensions depending on the type of printer used.

# 2 How to assemble

## Cutting technique

- Follow carefully with the following working method and markings.
- Cut carefully along the outline with a cutting blade, Exacto-knife or scissors.

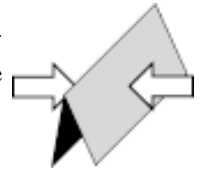
### One - point Advice

- Use caution when using a blade cutter.
- For folding parts, first use an awl or other pointed tool to make a light crease along the dotted or solid line. This will make the folds straight. Avoid making strong creases as this will cause the paper to tear.
- As an adhesive, white, wood glue is recommended. Avoid over-application as this will cause the paper to wrinkle.
- Before beginning assembly, test adhesive amounts on extra paper.
- Occasionally, white spots will be apparent on folds and cuts. Use a marker or pencil to fill in these spots. It is recommended that this be done after each stage of assembly because coloring becomes more difficult once parts are assembled.

## Basic working method and markings

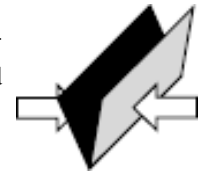
————— (Solid lines)

Fold along these lines. The printed surface should be on the outside of the folded shape.



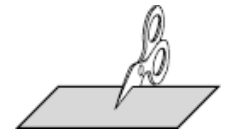
- - - - - (Dotted lines)

Fold along these lines. The printed surface should be on the inside of the folded shape.

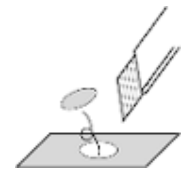


————— (Bold line)

Cut along these lines.



Please cut out parts marked with an asterisk. (\*)

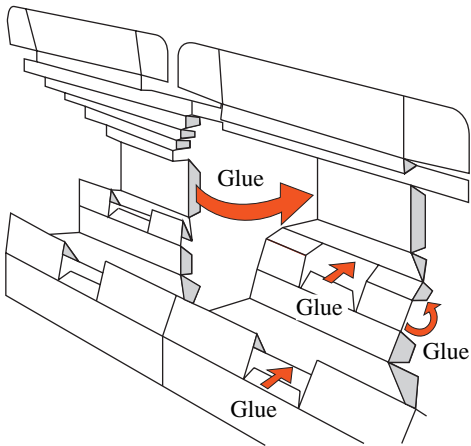


### 3 Assembly

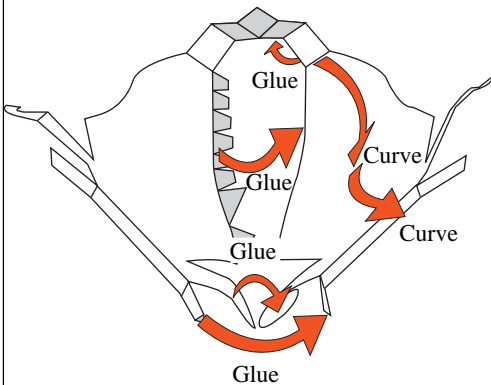
Please refer to the "Basic working method and markings" symbol chart.  
Once the parts are folded properly, begin gluing and insertion.

#### Instructions

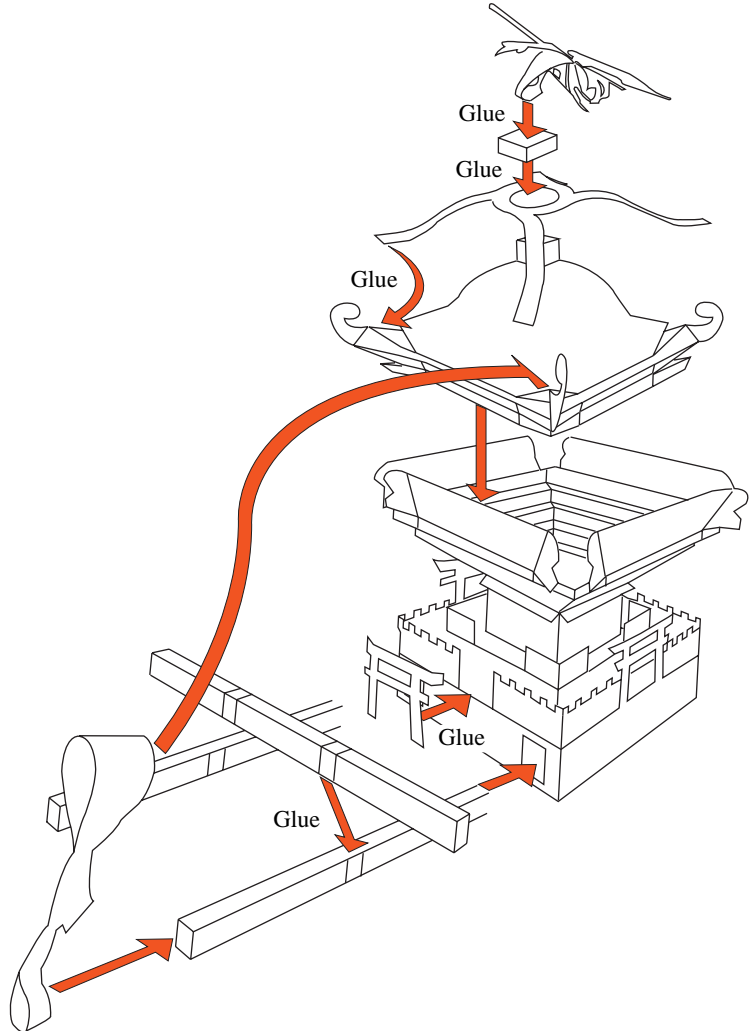
##### Mikoshi wall



##### Mikoshi roof

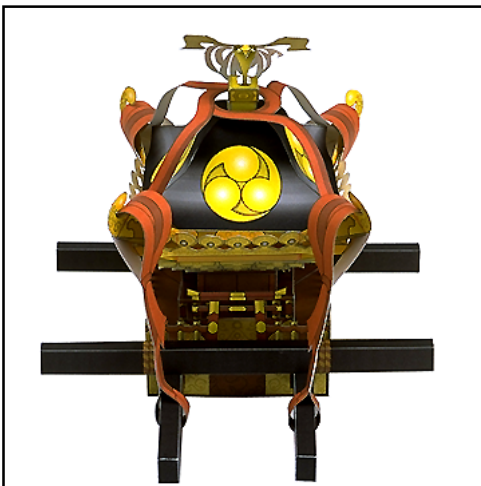


Please refer to this illustration for assembly.



### 4 The Finished Model

The finished model



#### What is "Mikoshi"?

In AD 794, more than 1200 years ago, the word "Mikoshi" first appeared in literature. It was used to move the Japanese God, "Usa Hachiman" to a famous temple called "Todai-ji." The literal translation of Mikoshi actually means "God's Vehicle" and "Moveable Shrine".

The Mikoshi is the same style of architecture as the larger, permanent shrines of Japan. Both are made in various shapes including square, hexagonal, octagonal and round styles. Skilled craftsmen design their beautiful roofs and crafted Chinese Phoenixes that are customary ornaments.

This paper craft Mikoshi model comes with many parts and may require the help of family members to complete but with a little teamwork and effort, you can create a small piece of traditional Japanese beauty!