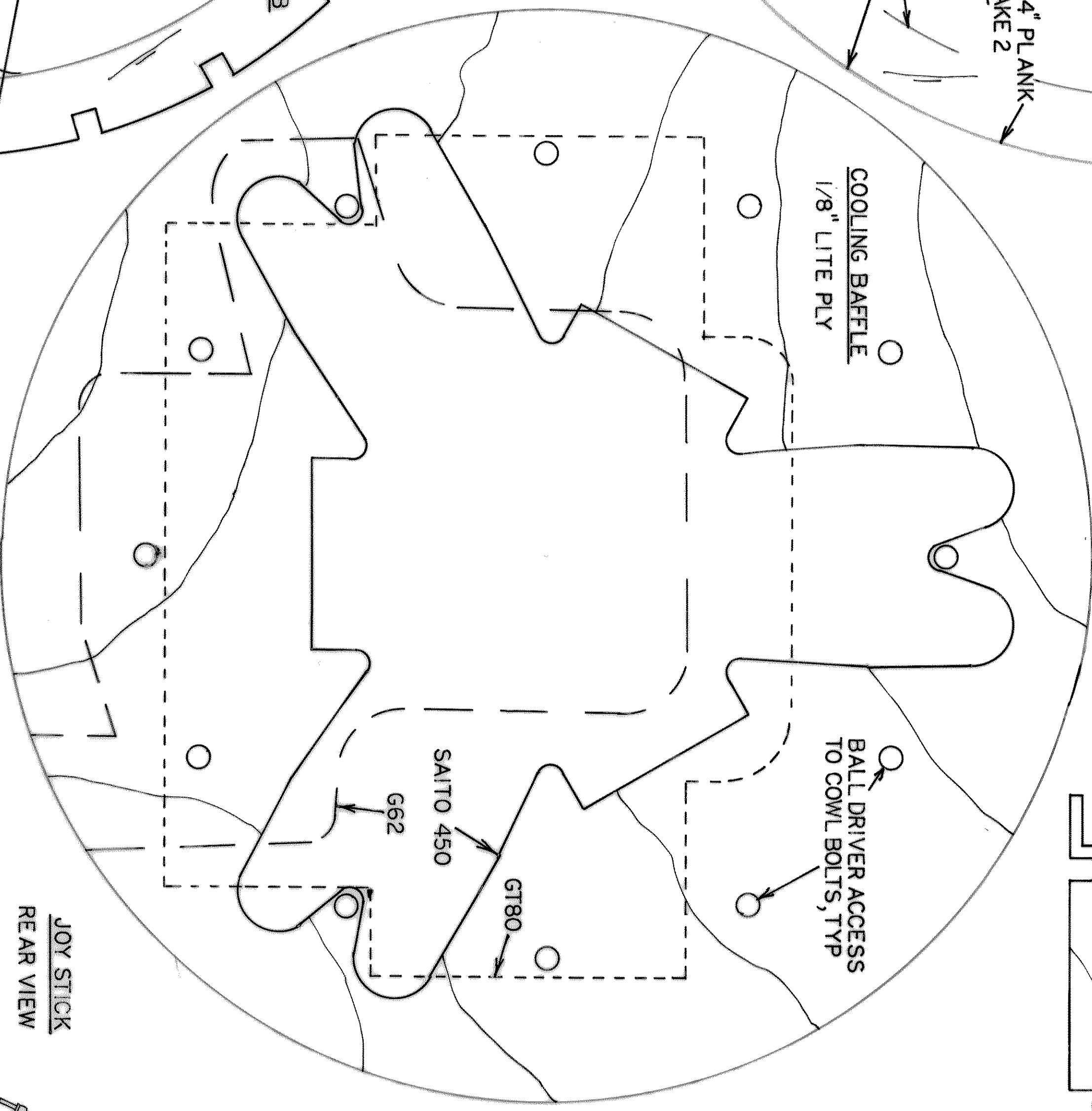
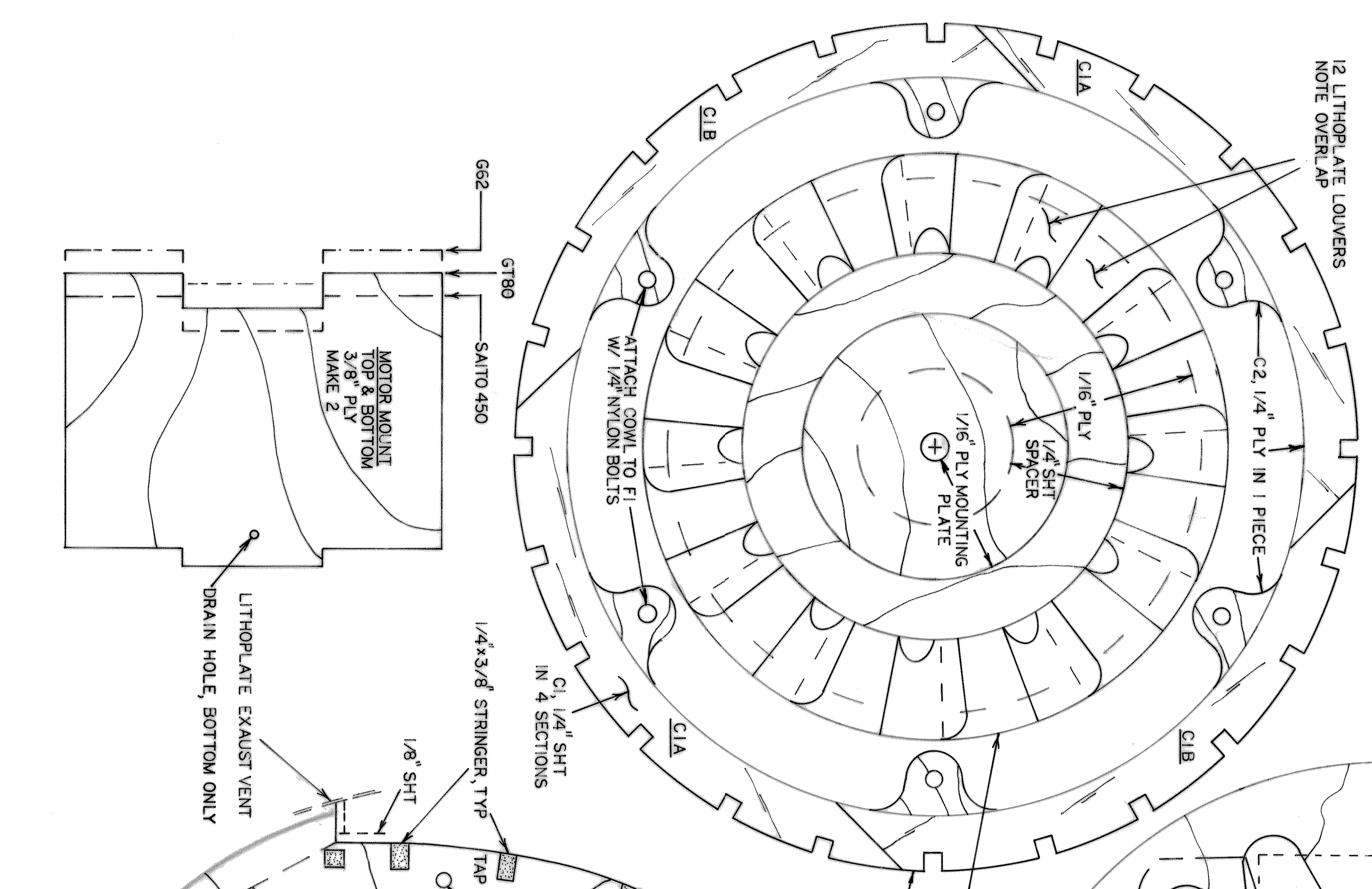


USE THIS PATTERN TO ROUND NOSE BOWL



ROTATE C2 SO MOUNTING BOLTS ARE ACCESSIBLE FROM FRONT AFTER COWL IS ASSEMBLED. REMOVE PORTION OF C2 TO OPEN COOLING VENTS



COOLING LOUVERS - STATIC DISPLAY ONLY ATTACH TO BACK OF STATIC SPINNER
 FIT TO C2 BEFORE ASSEMBLING MOTOR MOUNT
 1/8" DIA THROTTLE CABLE
 E1 1/4" PLY
 "YOU NEVER FINISH A SCALE MODEL, YOU JUST STOP WORKING ON IT" -DAVE PLATT
 AUX COOLING EXITS
 1/8" SHT
 WSI 1

