

upper wing

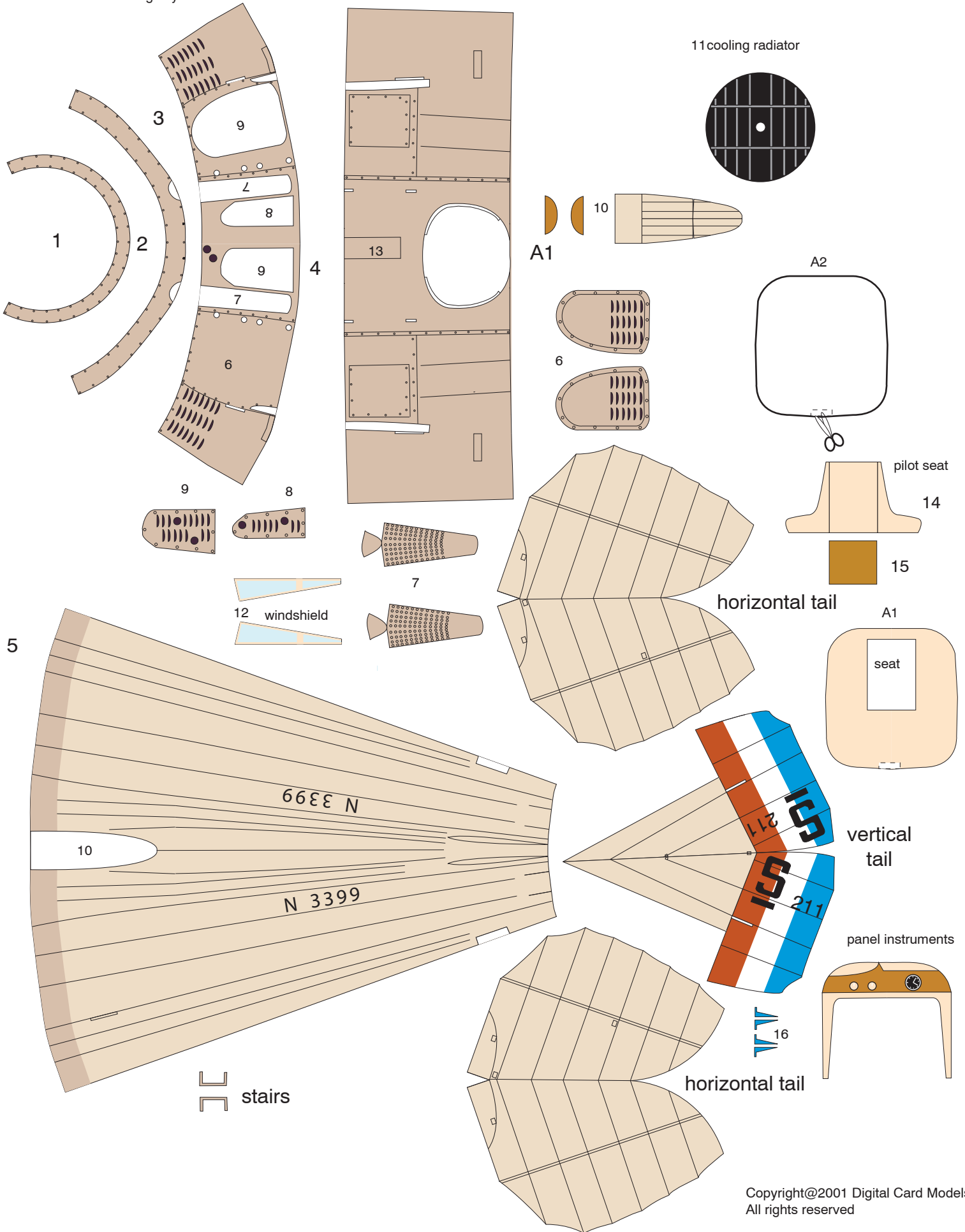
lower wing

for larger scale

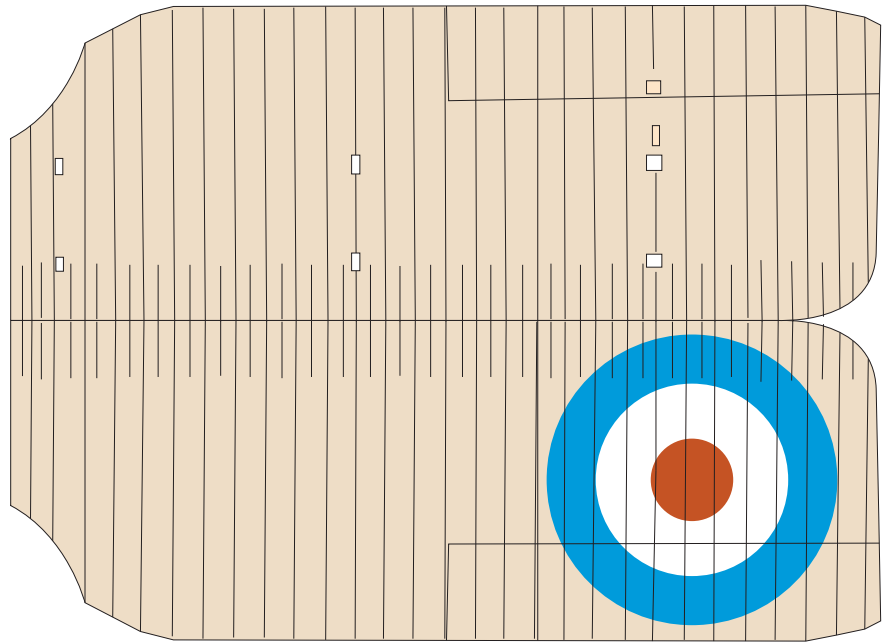
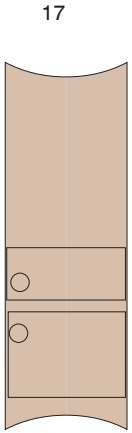
roll pieces 33 and 34

for smaller scale

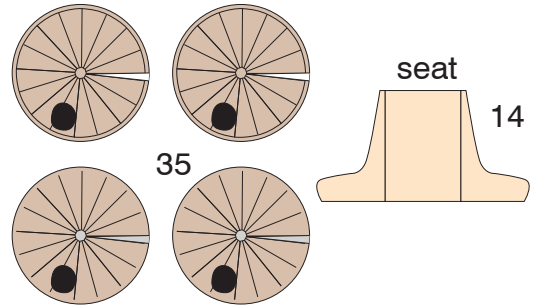
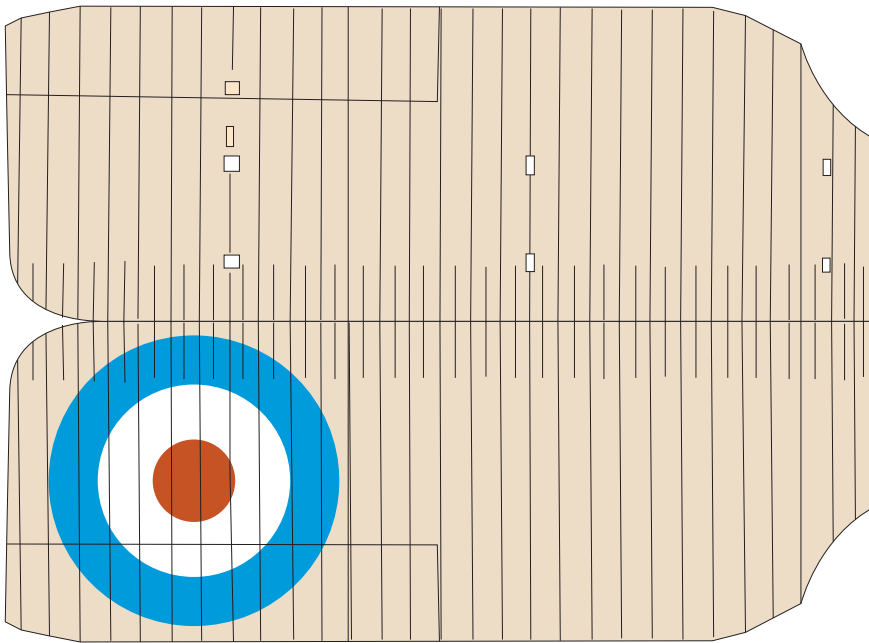
cover entire ensemble with 21



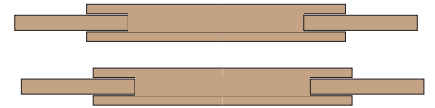
upper right wing



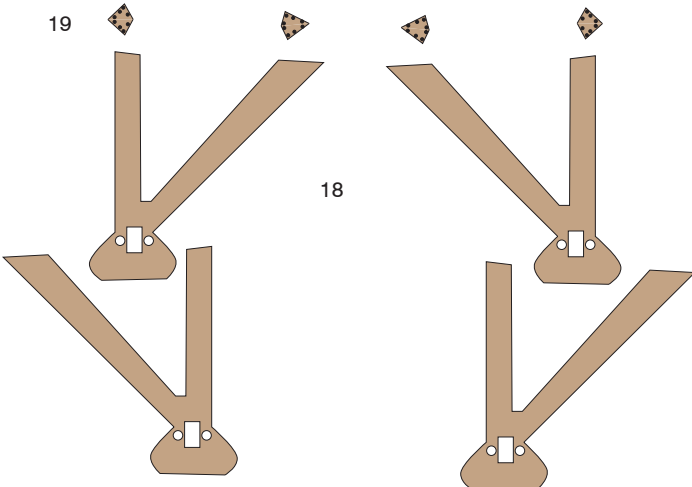
upper left wing



axle for smaller scale



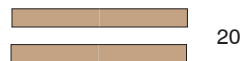
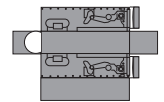
34 axle for larger scale 33



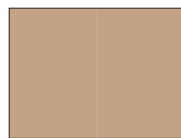
machine gun



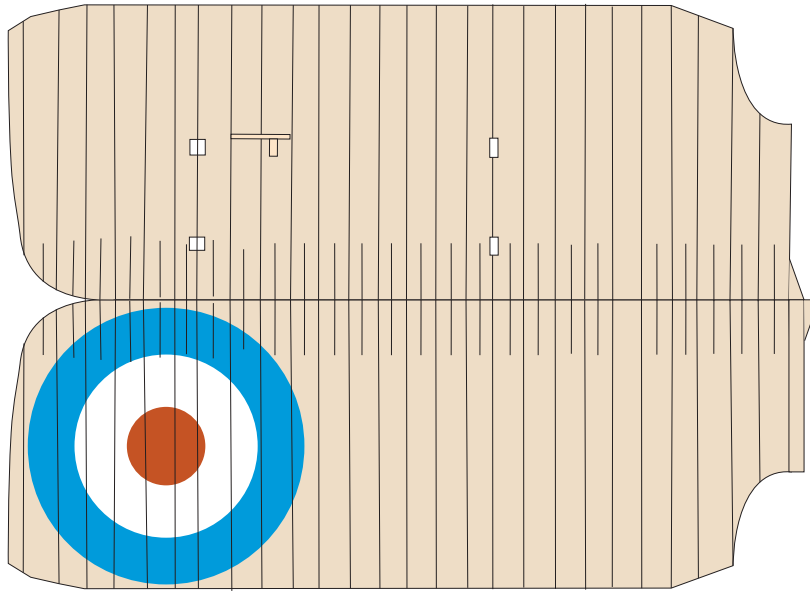
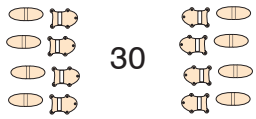
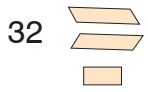
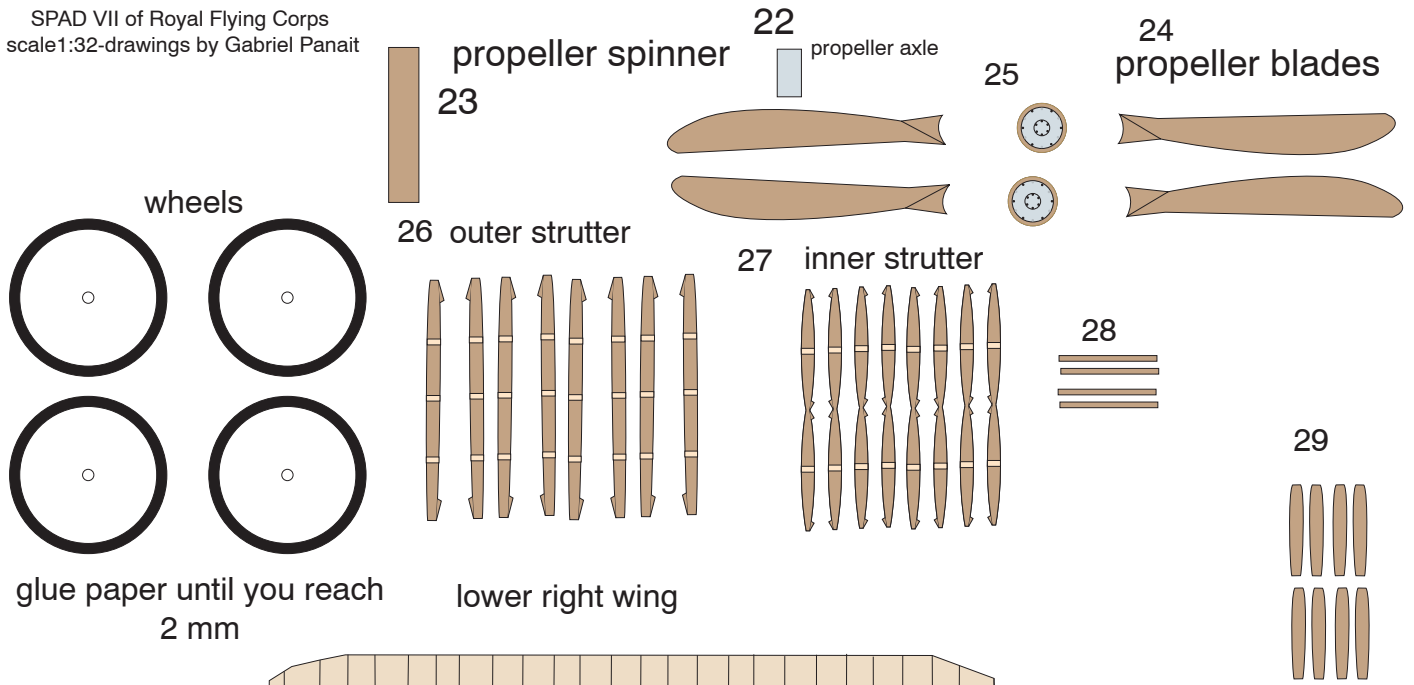
31 machine gun



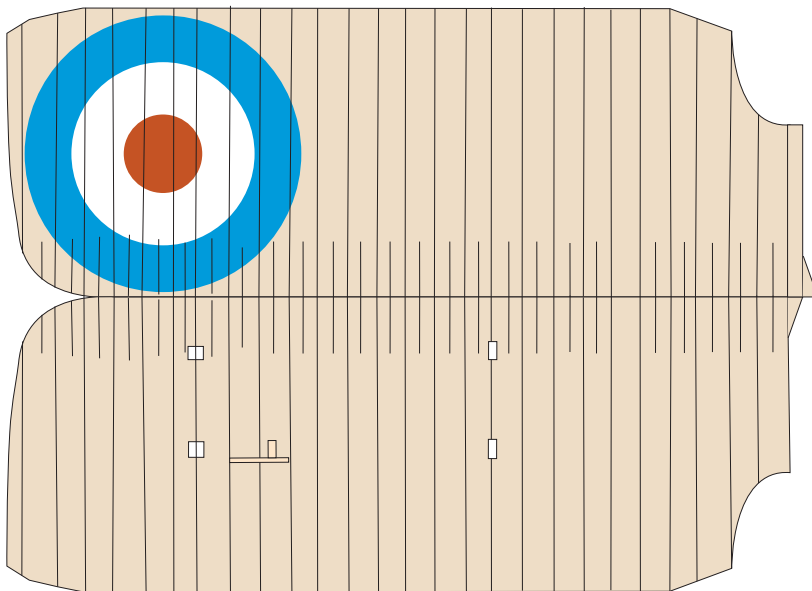
20



21

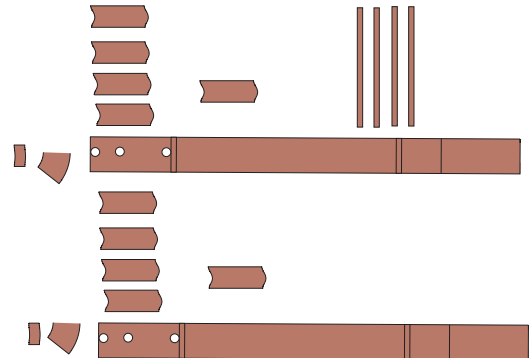


lower left wing

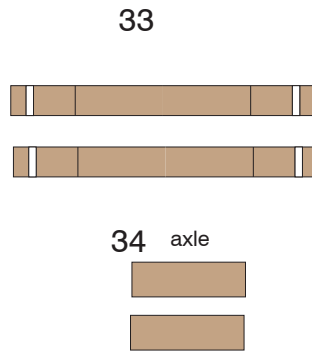
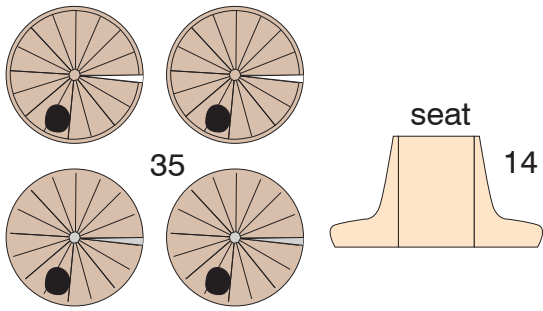


for this scale you can use wire for exhaust pipes

exhaust pipes for larger scale



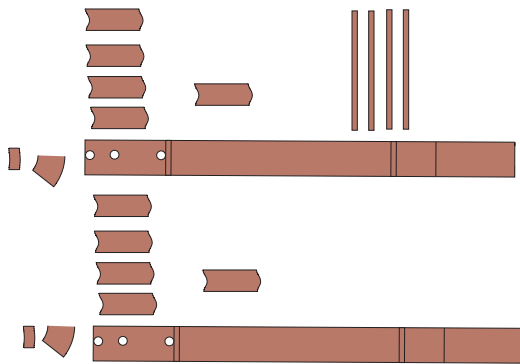
for larger scale



machine gun



exhaust pipes for larger scale



for this scale you can use wire for exhaust pipes